

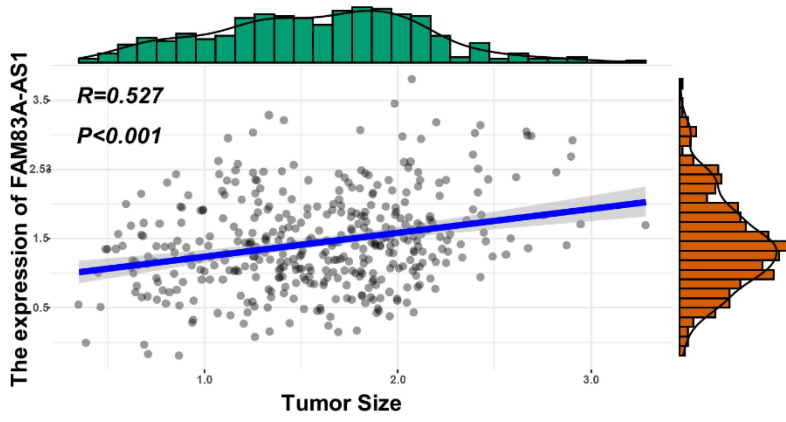
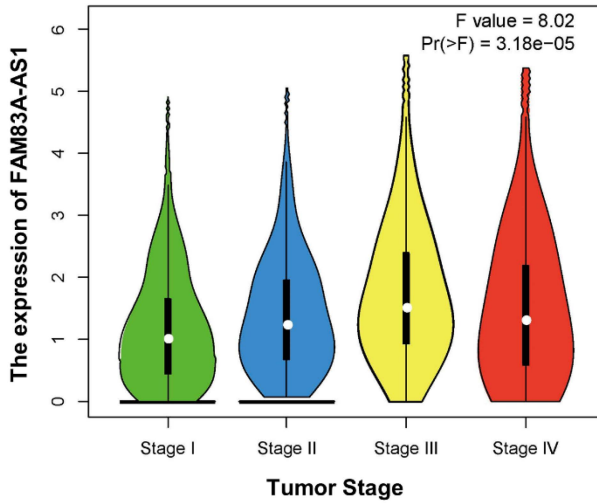
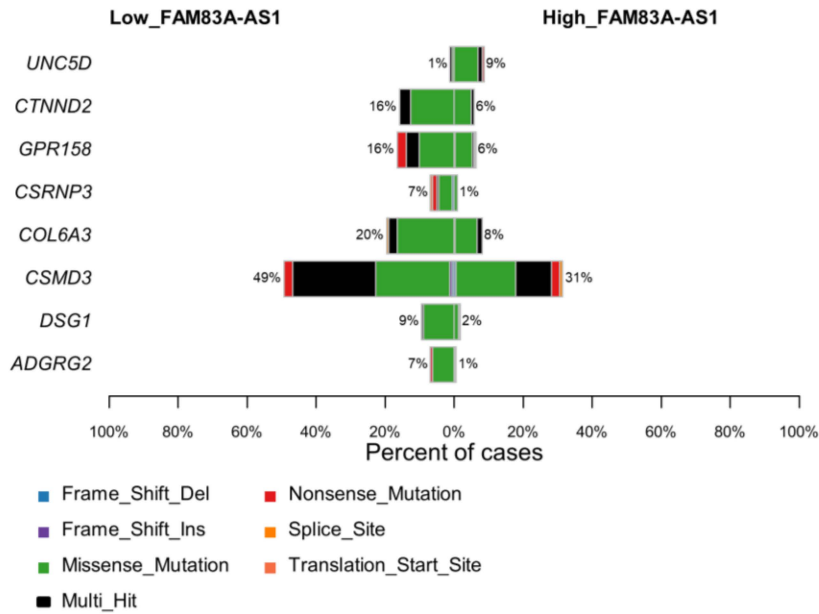
Supplementary Figure 1

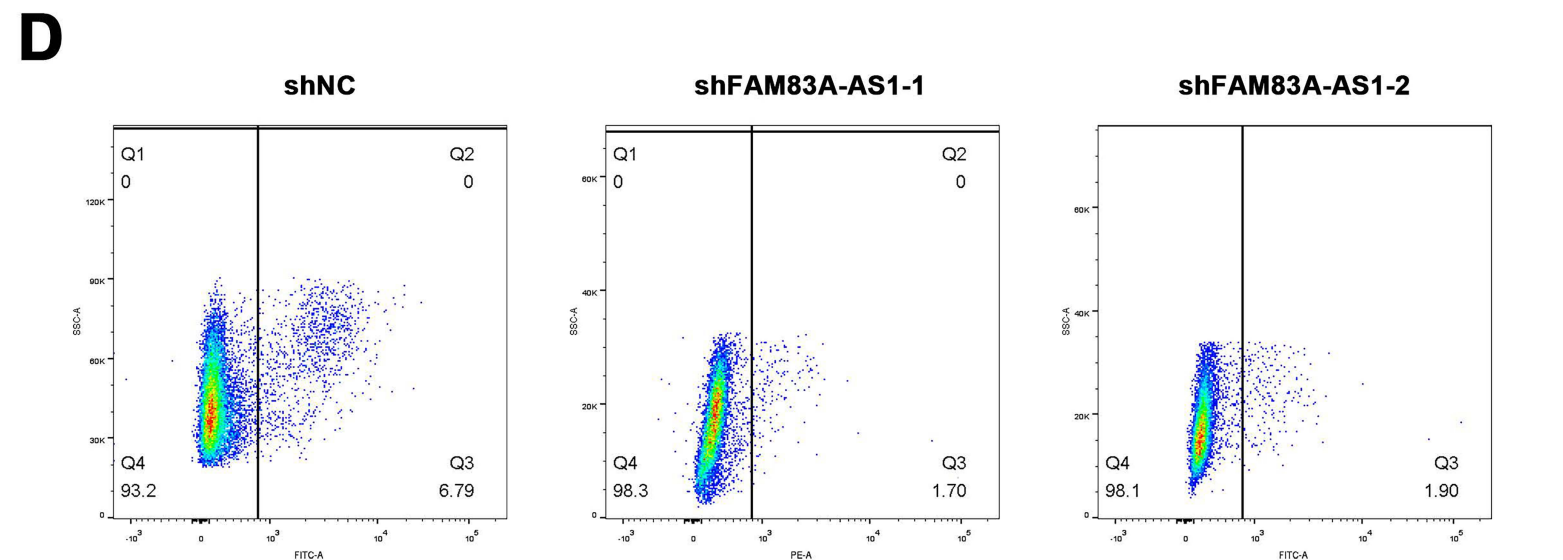
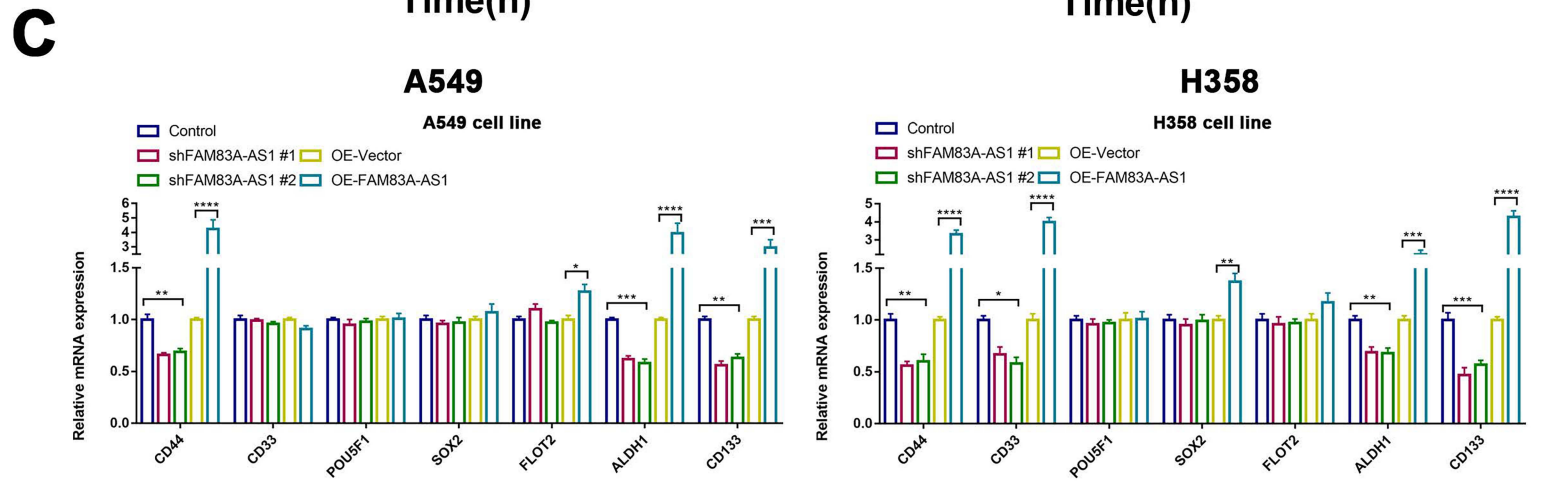
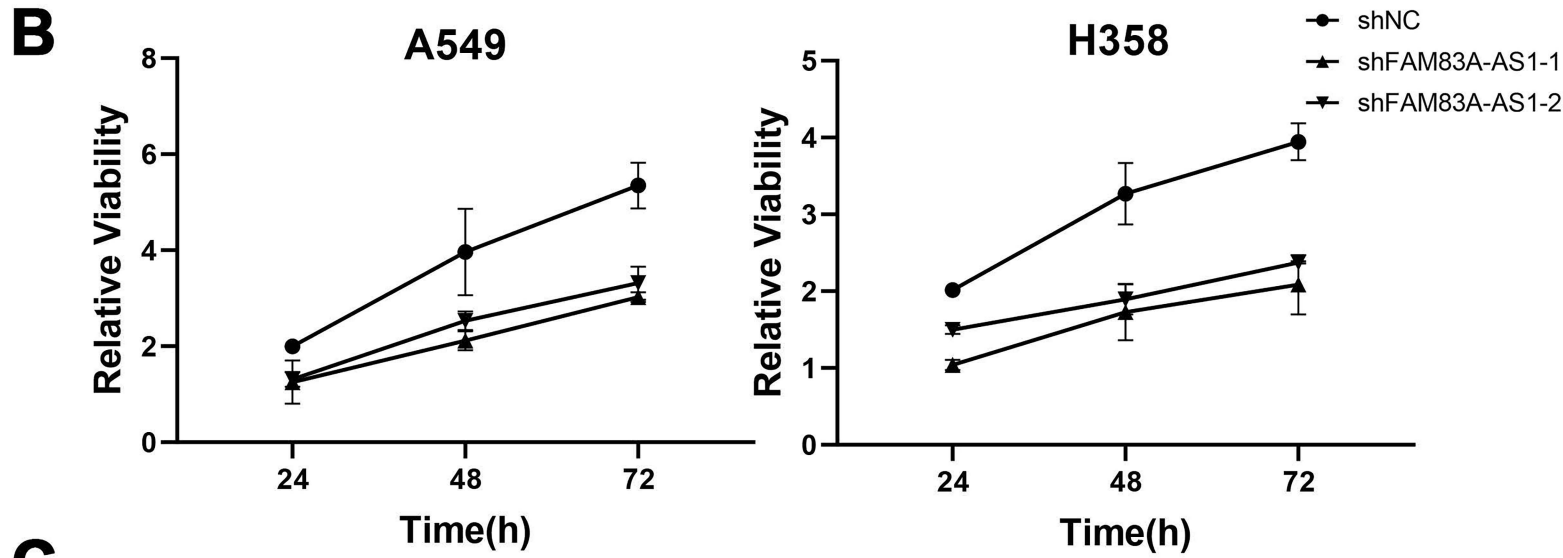
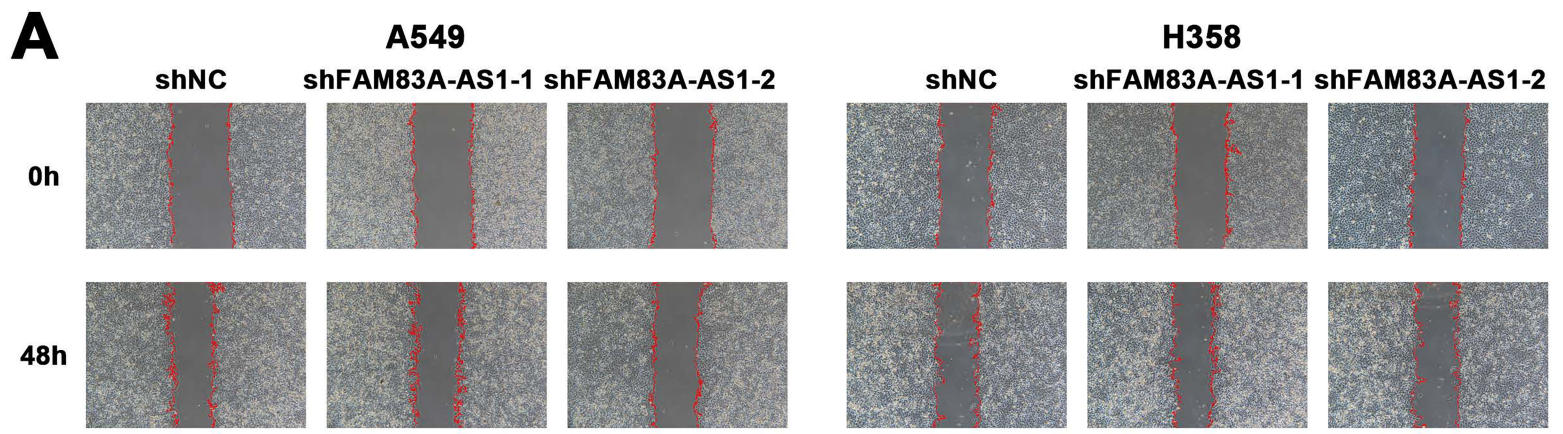
- (a). The association between the expression of FAM83A-AS1 and tumor size.
- (b). The association between the expression of FAM83A-AS1 and AJCC stage.
- (c) . The association between the expression of FAM83A-AS1 and somatic mutation distribution

Supplementary Figure 2

- (a) Wound-healing scratch assays of FAM83A-AS1 knockdown and control LUAD cells under normoxic conditions.
- (b) Growth curves of A549 and H358 cell lines were measured after transfection with lentivirus vectors by CCK-8.
- (c) Relative gene expression ($2^{-\Delta\Delta CT}$) of stemness-related genes in FAM83A-AS1 knockdown, overexpressing and control cells.
- (d) The expression of CD133 in FAM83A-AS1 knockdown and control LUAD cells using Flow cytometric.

Supplementary Figure 3. Subcutaneous tumorigenesis assay shows tumor size in mice injected FAM83A-AS1 knockdown and control A549 cells.

A**B****C**



shNC



shFAM83A-AS1-1



shFAM83A-AS1-2



shFAM83A-AS1-2

shFAM83A-AS1-1

shNC



CD44

Forward Primer CTGCCGCTTTGCAGGTGTA
Reverse Primer CATTGTGGGCAAGGTGCTATT

CD33

Forward Primer GGTGTGACTACGGAGAGAACC
Reverse Primer GGTAGGGTGGGTGTCATTCC

POU5F1

Forward Primer CAAAGCAGAAACCCCTCGTGC
Reverse Primer TCTCACTCGGTTCTCGATACTG

SOX2

Forward Primer TGGACAGTTACGCGCACAT
Reverse Primer CGAGTAGGACATGCTGTAGGT

FLOT2

Forward Primer GCAGATTGCCGAGGGTGAAA
Reverse Primer CTCCCCGATTTTGCGGATCTT

ALDH1

Forward Primer CGGGAAAAGCAATCTGAAGAGGG
Reverse Primer GATGCGGCTATACAACACTGGC

CD133

Forward Primer AGTCGGAAACTGGCAGATAGC
Reverse Primer GGTAGTGTGTACTGGGCCAAT

SLC2A1

Forward Primer TCTGGCATCAACGCTGTCTTC
Reverse Primer CGATACCGGAGCCAATGGT

HK2

Forward Primer TGCCACCAGACTAAACTAGACG
Reverse Primer CCCGTGCCCAATGAGAC

PFKL

Forward Primer GTACCTGGCGCTGGTATCTG
Reverse Primer CCTCTCACACATGAAGTTCTCC

GAPDH

Forward Primer ACAACTTTGGTATCGTGGAAGG
Reverse Primer GCCATCACGCCACAGTTTC

ENO1

Forward Primer TGGTGTCTATCGAAGATCCCTT
Reverse Primer CCTTGGCGATCCTCTTTGG

PDK1

Forward Primer CTGTGATACGGATCAGAAACCG
Reverse Primer TCCACCAAACAATAAAGAGTGCT

PKM2

Forward Primer ATAACGCCTACATGGAAAAGTGT
Reverse Primer TAAGCCCATCATCCACGTAGA

LDHA

Forward Primer TTGACCTACGTGGCTTGGAAG
Reverse Primer GGTAACGGAATCGGGCTGAAT

LDHB

Forward Primer TCTGTGACCGCCAATTCTAAGA
Reverse Primer GCACCAGATTGAGCCGACTC

MCT4

Forward Primer CGGCTTTGTGCTTTACGCC
Reverse Primer GCTGAAGAGGTAGACGGAGTA