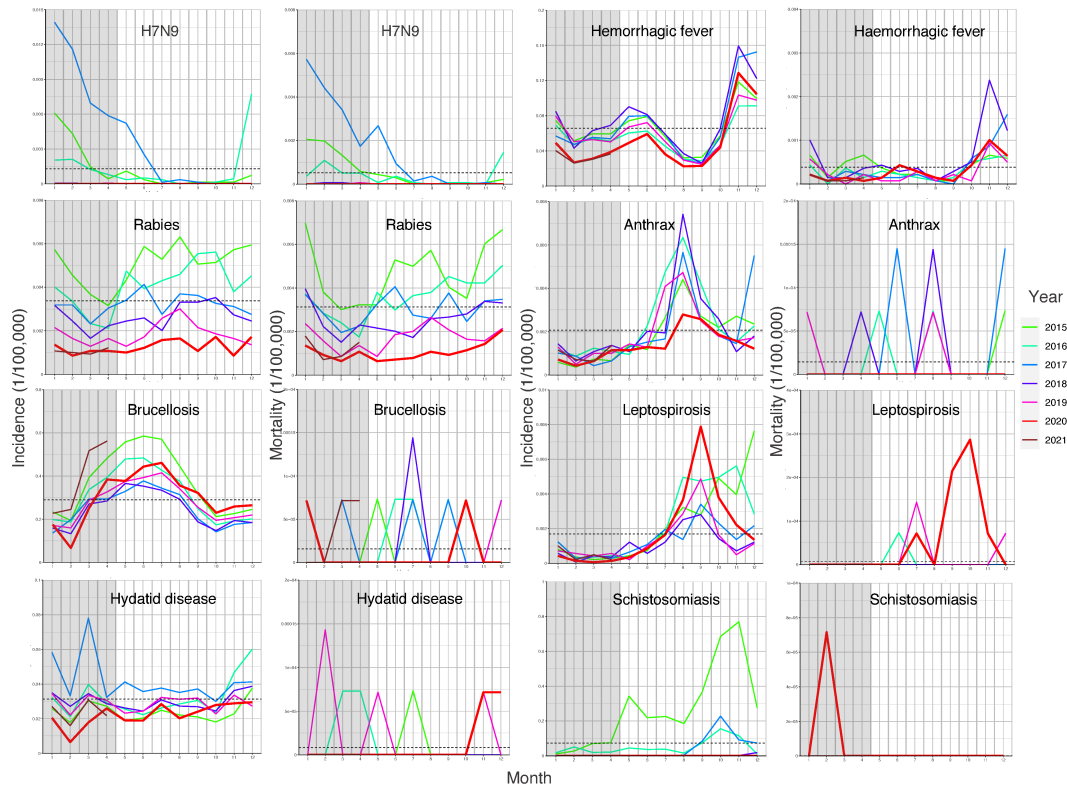


## Supplementary materials



**Figure S1.** Trends of the monthly incidence and the monthly mortality of each zoonotic diseases in China from 2015 to April 2021.

Notes: The horizontal dotted line represents the average monthly incidence and mortality across 2015 and 2019.

**Table S1.** Start and end times of public health emergency response mechanisms in each province.

<b>Province</b>	<b>Public health emergency response level 1</b>	<b>Public health emergency response level 2</b>	<b>Public health emergency response level 3</b>	<b>Public health emergency response level 4</b>
<b>Beijing</b>	January 24	April 30		
<b>Tianjin</b>	January 24	April 30		
<b>Hebei</b>	January 24	April 30		
<b>Shanxi</b>	January 25	February 24	March 10	
<b>Inner-Mongolia</b>	January 25		February 25	
<b>Liaoning</b>	January 25		February 22	
<b>Jilin</b>	January 25	February 26	March 20	
<b>Heilongjiang</b>	January 25	March 4	March 25	
<b>Shanghai</b>	January 24	March 24		
<b>Jiangsu</b>	January 24	February 24	March 27	
<b>Zhejiang</b>	January 23	March 2	March 23	
<b>Anhui</b>	January 24	February 25	March 15	
<b>Fujian</b>	January 24	February 26	February 26	
<b>Jiangxi</b>	January 24	March 12	March 20	
<b>Shandong</b>	January 24	March 7	May 5	
<b>Henan</b>	January 25	March 19	May 5	
<b>Hubei</b>	January 24	May 2		
<b>Hunan</b>	January 23	March 10	March 31	
<b>Guangdong</b>	January 23	February 24		
<b>Guangxi</b>	January 24		February 24	
<b>Hainan</b>	January 25	January 24	February 26	
<b>Chongqing</b>	January 24	March 10	March 24	
<b>Sichuan</b>	January 24	February 26	March 25	
<b>Guizhou</b>	January 24		February 23	
<b>Yunnan</b>	January 24		February 24	
<b>Xizang</b>	January 30	March 6		
<b>Shaanxi</b>	January 25		February 28	
<b>Gansu</b>	January 25		February 21	
<b>Qinghai</b>	January 25		February 26	March 6
<b>Ningxia</b>	January 25	February 28		
<b>Xinjiang</b>	January 25	February 25	March 7	March 21

**Table S2.** Summary of the annual incidence and mortality of zoonotic diseases

	Average annual incidence		Growth rate(%)	p- value	Average annual mortality		Growth rate(%)	p- value
	2020	2015-2019			2020	2015-2019		
<b>Total</b>	4.5273	5.6132	-19.34	<0.001	0.01769	0.04897	-63.88	<0.001
<b>H7N9</b>	0.0000	0.0156	-100.00	<0.001	0.00000	0.00635	-100.00	<0.001
<b>Haemorrhagic fever</b>	0.6119	0.7874	-22.28	<0.001	0.00365	0.00461	-20.78	0.20
<b>Rabies</b>	0.0152	0.0404	-62.38	<0.001	0.01282	0.03743	-65.75	<0.001
<b>Anthrax</b>	0.0166	0.0248	-33.06	<0.001	0.00000	0.00017	-100.00	0.16
<b>Brucellosis</b>	3.5885	3.4750	3.27	<0.001	0.00014	0.00019	-24.00	0.65
<b>Leptospirosis</b>	0.0226	0.0203	11.07	0.20	0.00064	0.00009	640.98	0.01
<b>Hydatid disease</b>	0.2677	0.3764	-28.88	<0.001	0.00014	0.00010	41.14	0.57
<b>Schistosomiasis</b>	0.0048	0.8734	-99.45	<0.001	0.00007	0.00000	--	--

**Table S3.** Observed and predicted annual mortality of zoonotic diseases in 2020, China

	Incidence				Morality			
	Observed	Predicted	Growth rate(%)	p-value	Observed	Predicted	Growth rate(%)	p-value
<b>Total</b>	4.5273	4.5687	-0.90	0.11	0.01747	0.02529	-30.91	<0.001
<b>H7N9</b>	0.0000	0.0023	-100.00	<0.001	0.00000	0.00107	-100.00	<0.001
<b>Haemorrhagic fever</b>	0.6119	0.6319	-3.16	0.03	0.00365	0.00425	-14.13	0.44
<b>Rabies</b>	0.0152	0.0190	-20.25	0.01	0.01282	0.02066	-37.97	<0.001
<b>Anthrax</b>	0.0166	0.0244	-32.00	<0.001	0.00000	0.00017	-100.00	0.16
<b>Brucellosis</b>	3.5885	3.4934	2.72	<0.001	0.00014	0.00019	-23.53	0.65
<b>Leptospirosis</b>	0.0226	0.0210	7.39	0.37	0.00064	0.00009	644.37	0.01
<b>Hydatid disease</b>	0.2677	0.2714	-1.35	0.55	0.00014	0.00010	39.96	0.56
<b>Schistosomiasis</b>	0.0048	0.0970	-95.05	<0.001	0.00007	0.00007	0.00	0.99

**Table S4.** Measures under China public health emergency response system

<b>Level I</b>	Where the State Council initiates level I emergency response, it shall organize and coordinate emergency response under the unified leadership and command of the national emergency command organization. If the State Council fails to initiate level I emergency response, the provincial government shall initiate level I emergency response at the provincial level according to the event level and the actual situation, and report to the State Council for the record. According to the nature of the incident, carry out emergency response under the unified leadership and command of the provincial leading group, and request the support of the State Council and relevant ministries and commissions of the State Council if necessary. (1) Provincial government emergency response. The provincial leading group shall be established, with the governor as the group leader, and the office shall be located in the general office of the provincial government. Establish working groups such as control group, medical group, public opinion group, medical material support group, living material support group and comprehensive group, and increase corresponding special working classes as needed to carry out emergency disposal, medical treatment, technical support support support, communication and transportation support, material and equipment supply support, information release, publicity and education, scientific research, domestic and foreign exchanges and cooperation Logistics support, supervision and inspection, etc. (2) Emergency response of municipal and county (city and district) governments. Under the unified leadership and command of the provincial leading group, the municipal and county (city and district) governments are responsible for carrying out the emergency disposal work in their respective jurisdictions.
<b>Level II</b>	Level II emergency response (1) emergency response of provincial government. A provincial leading group is established, with the executive vice governor as the group leader, and the office is located in the general office of the provincial government. Establish working groups such as control group, medical group, public opinion group, medical material support group, living material support group and comprehensive group, implement special class operation and division of responsibilities, and carry out emergency disposal, medical treatment, technical support support support, communication and transportation support, material and equipment supply support, information release, publicity and education, scientific research, domestic and foreign exchanges and cooperation, logistics support Supervision and inspection. (2) Emergency response of municipal and county (city and district) governments. Under the unified leadership and command of the provincial leading group, the municipal and county (city and district) governments are responsible for carrying out the emergency disposal work in their respective jurisdictions.
<b>Level III</b>	Level III emergency response (1) emergency response of provincial government. A provincial leading group shall be established, headed by the vice governor in charge of health and health work. The office shall be located in the provincial department in charge of health and health, and in the general office of the provincial government under special circumstances. Establish relevant working groups as required, implement special shift operation and division of responsibilities, and coordinate the health emergency disposal of the whole province or specific regions. (2) Emergency response of relevant municipal and county (city, district) governments. Under the unified leadership and command of the provincial leading group, the relevant municipal and county (city and district) governments are responsible for carrying out the emergency disposal work under their jurisdiction.
<b>Level IV</b>	Level IV emergency response (1) emergency response of provincial government. Led by the provincial health department, organize relevant departments to start the joint prevention and control

	<p>mechanism to carry out prevention and control. (2) Emergency response of relevant municipal and county (city, district) governments. Under the unified coordination of the provincial joint prevention and control mechanism, the relevant municipal and county (city and district) governments are responsible for carrying out the emergency disposal work within their jurisdiction. All cities and counties (cities and districts) shall initiate regional emergency response measures with reference to the above contents. After the provincial emergency response is launched, the municipal and county (city and district) governments of the place where the incident occurred shall improve the emergency response level of the region as appropriate, strengthen work measures, strictly prevent the spread of the incident and control the impact of the incident.</p>
--	---

Notes: See "Regulations on Emergency Response to Public Health Emergencies" promulgated by the State Council of the People's Republic of China ([http://www.gov.cn/gongbao/content/2011/content\\_1860801.htm](http://www.gov.cn/gongbao/content/2011/content_1860801.htm)).