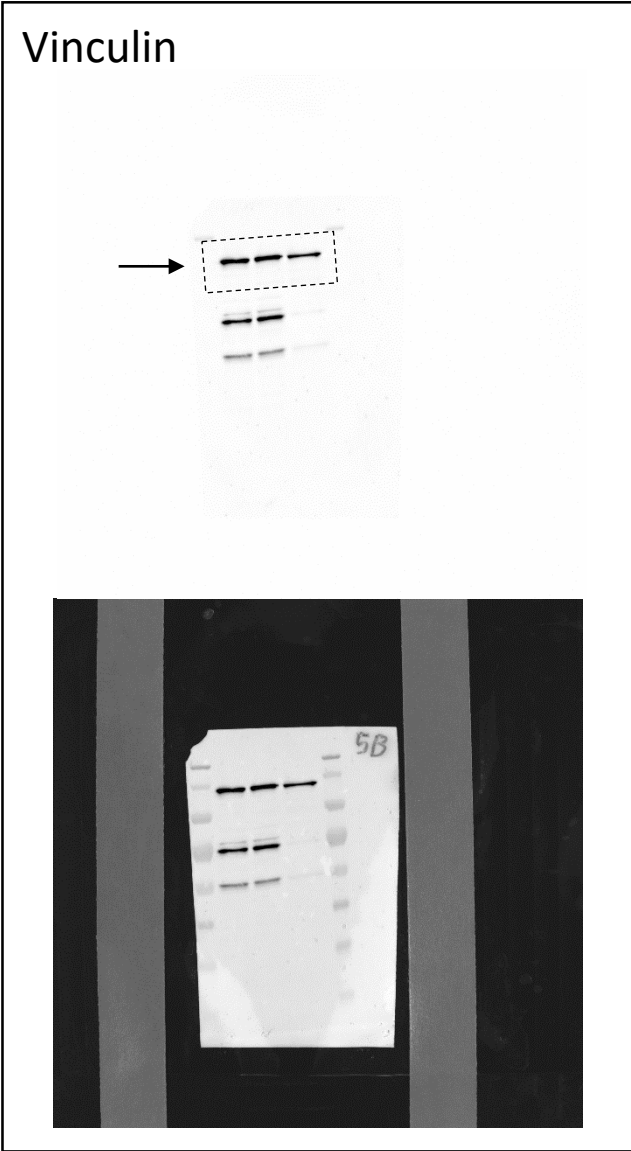
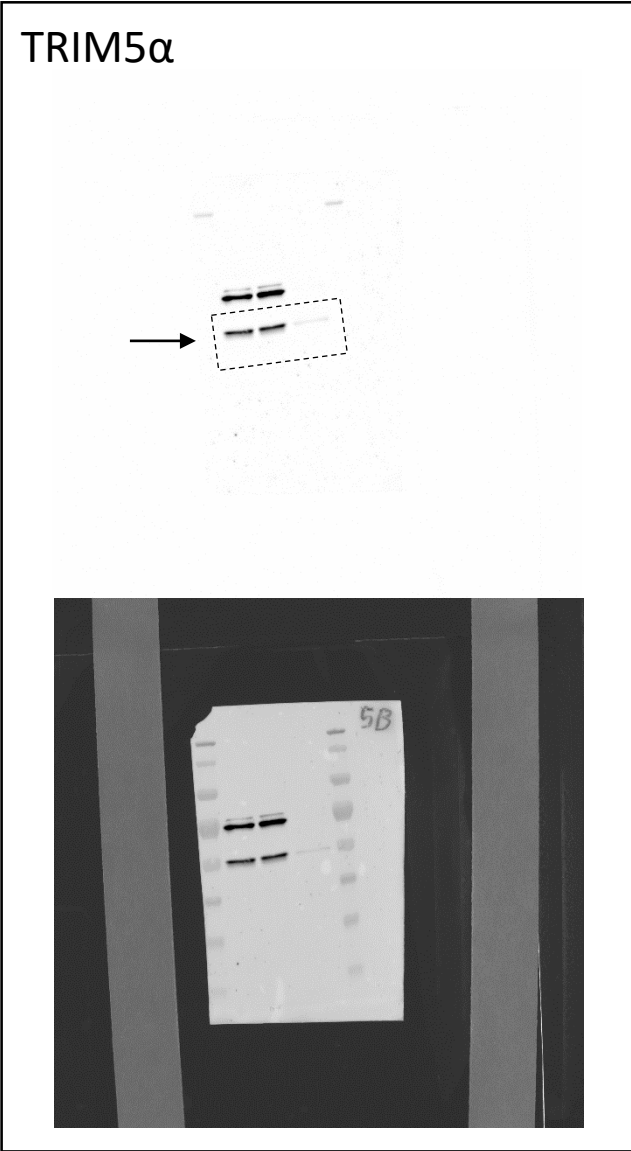
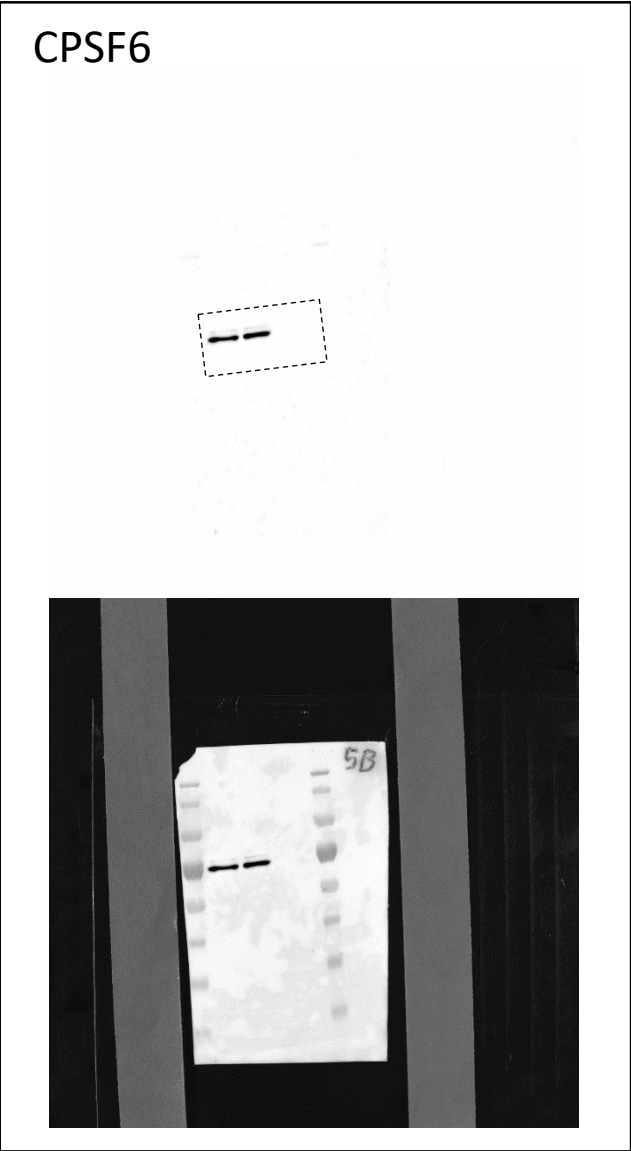
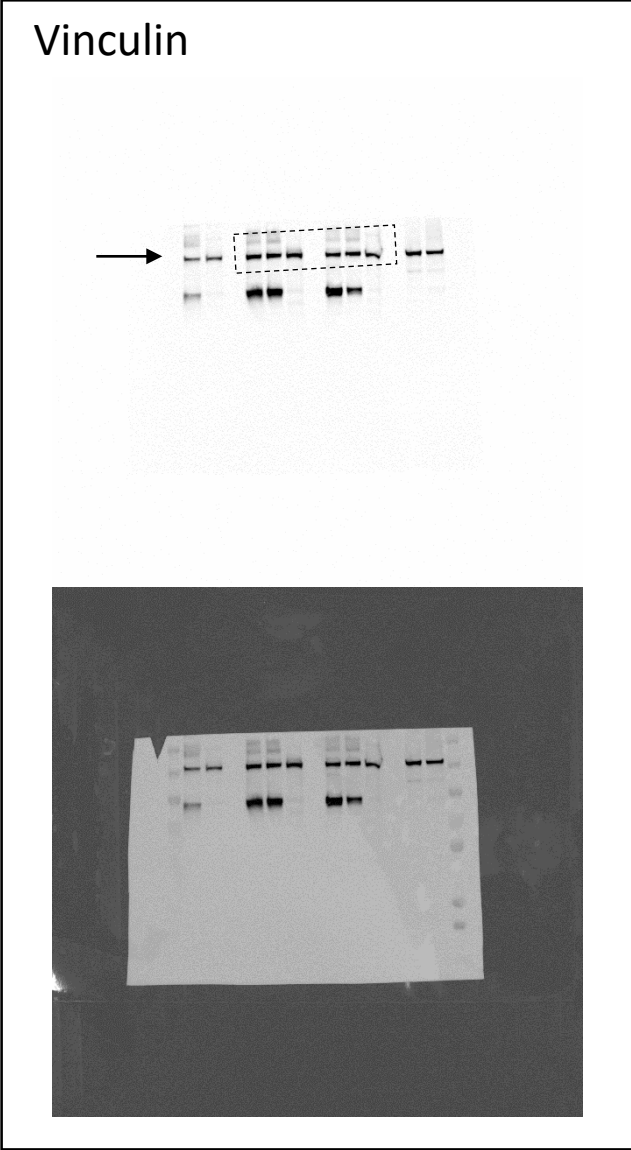
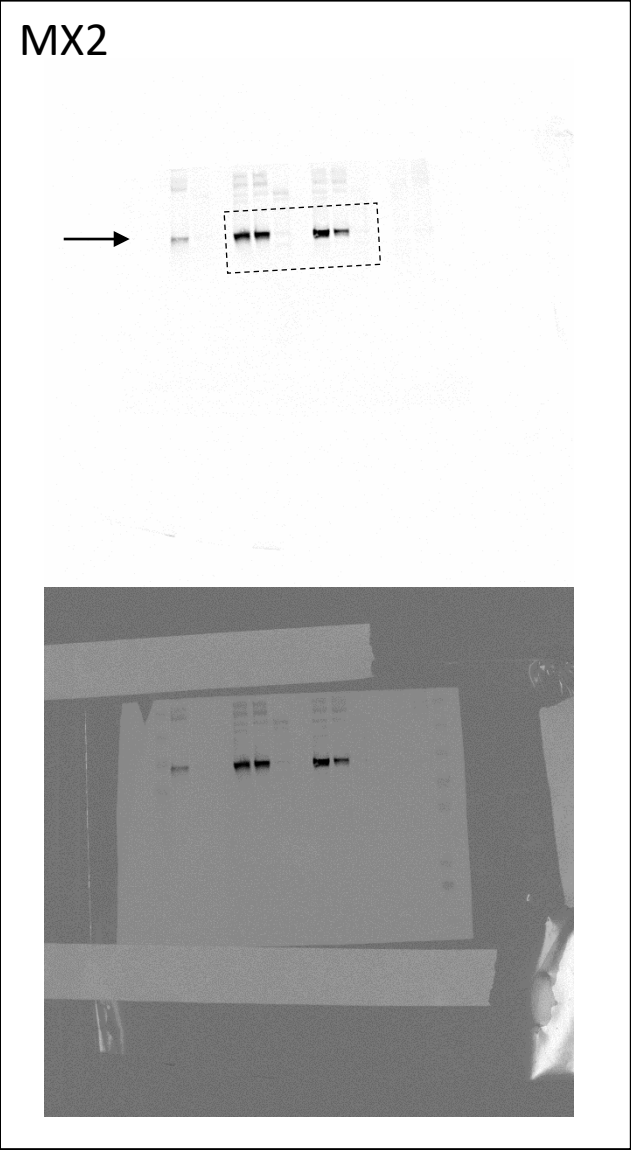


Source data Figure 2



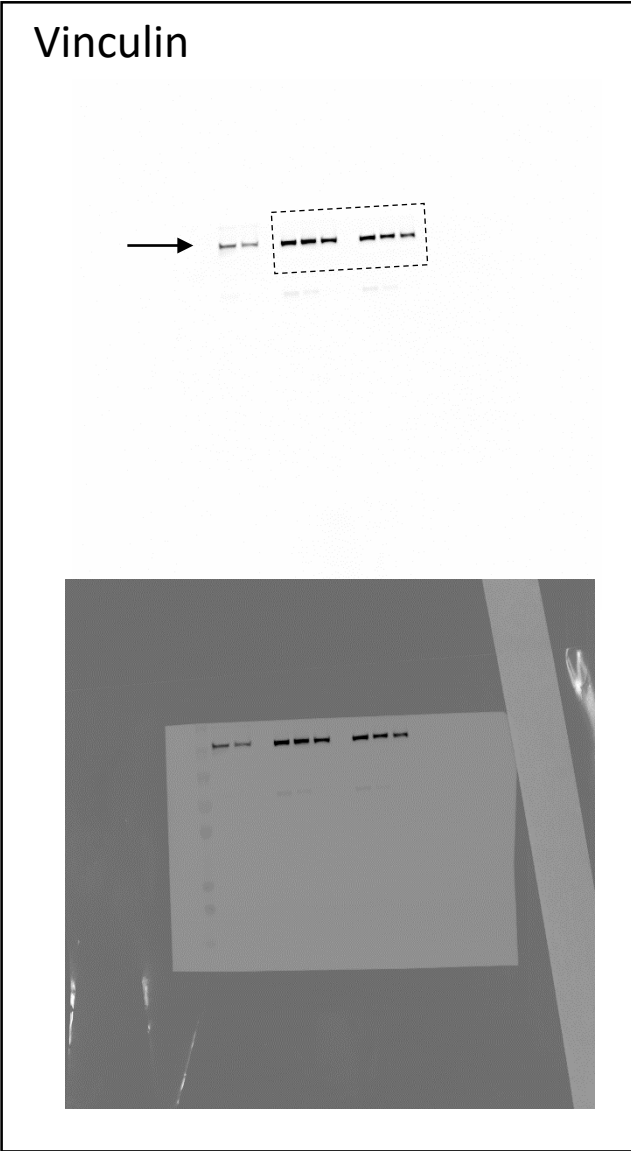
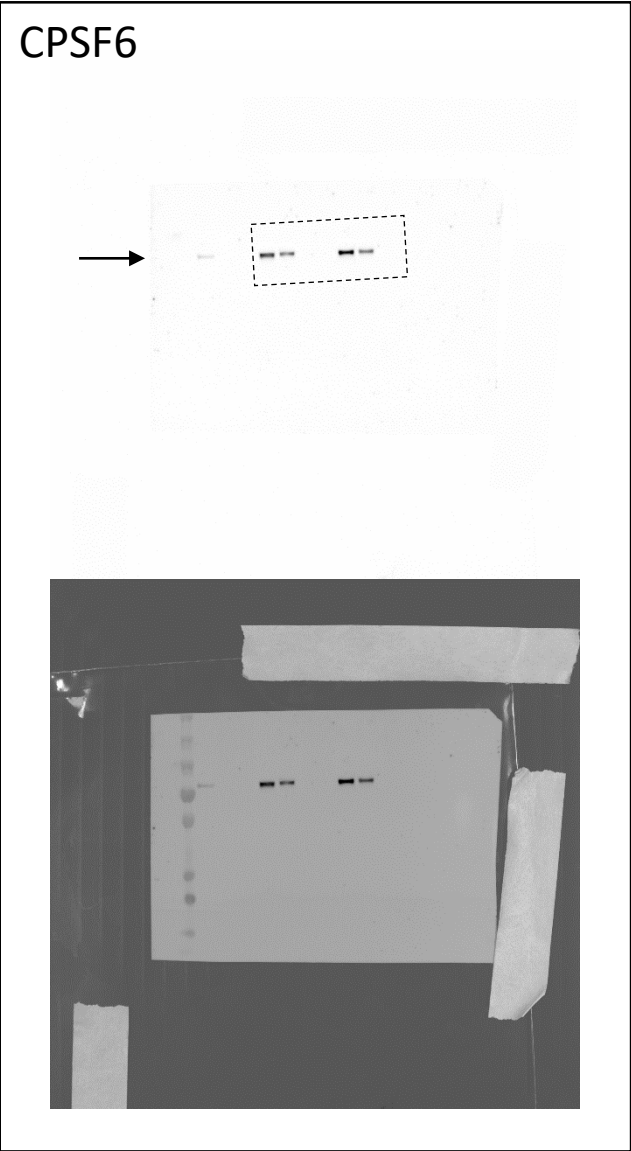
The same membrane was re-probed first against CPSF6, then TRIM5α, and finally against Vinculin.

Source data Figure 3i (top)



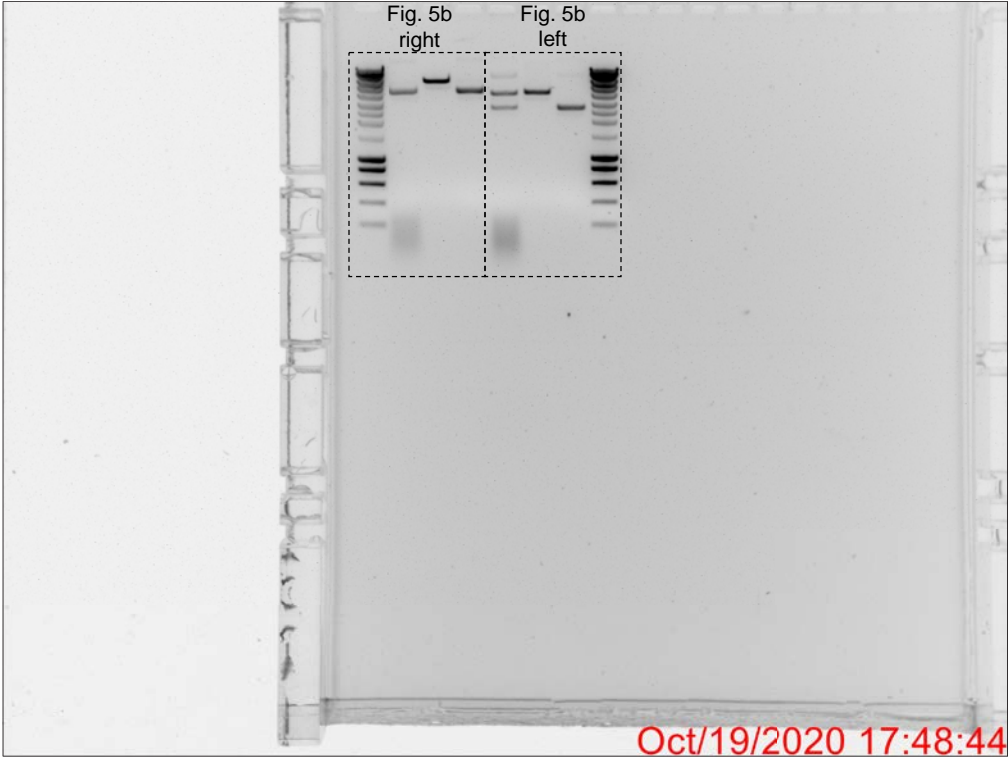
The same membrane was re-probed first against MX2, then against Vinculin.

Source data Figure 3i (bottom)

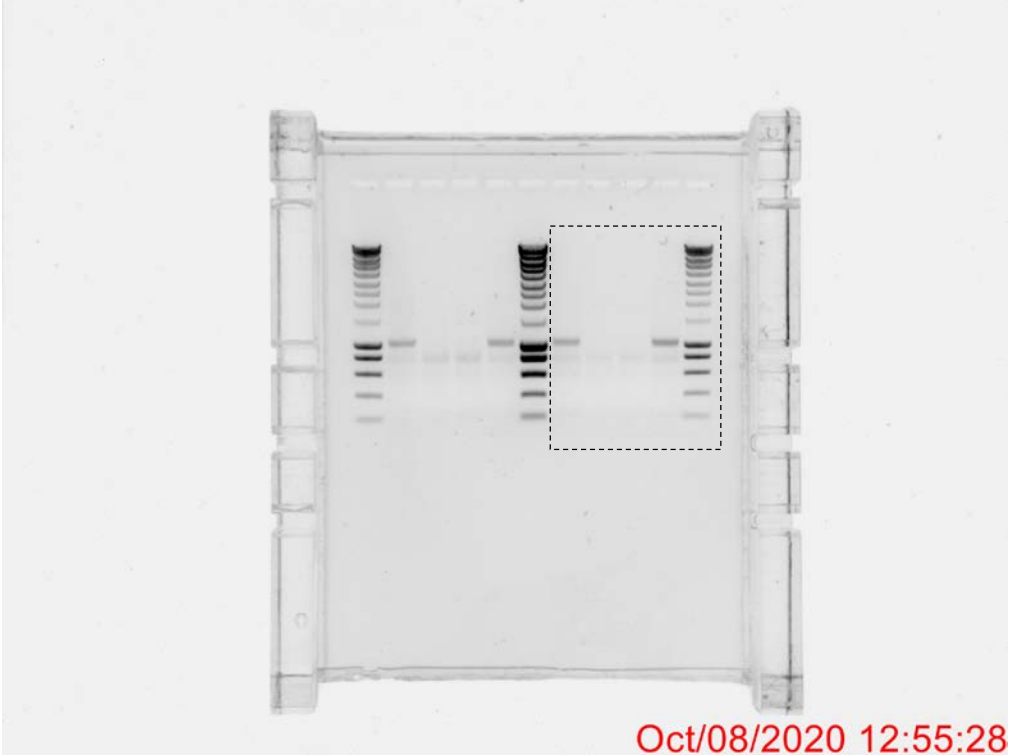


The same membrane was re-probed first against CPSF6, then against Vinculin.

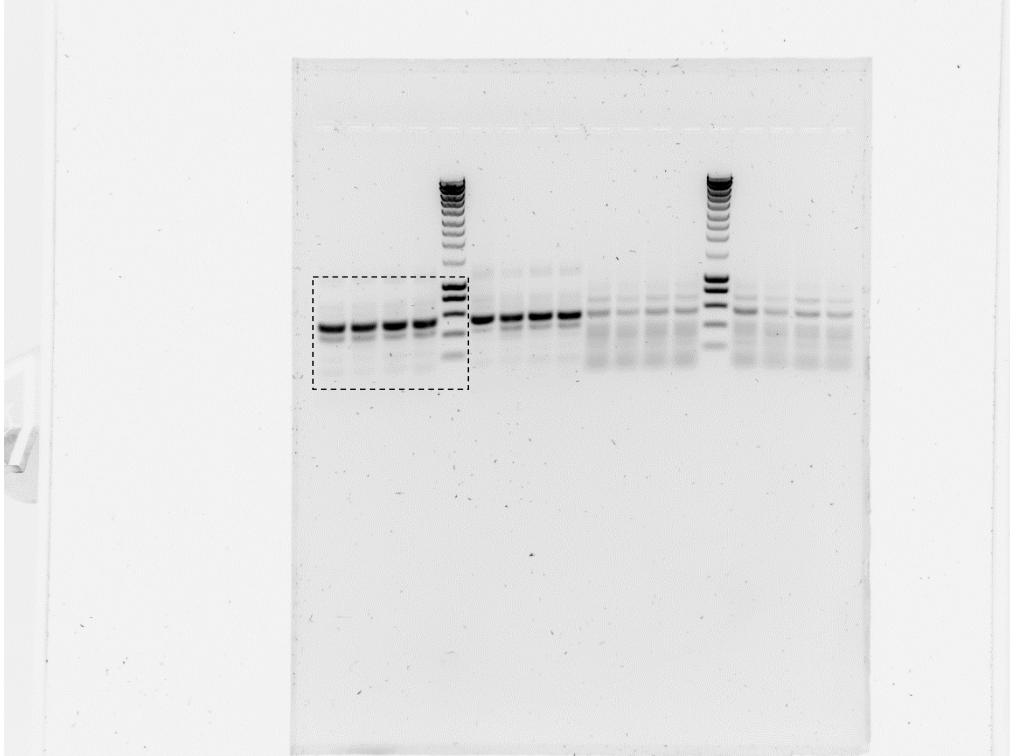
Source data Figure 5b



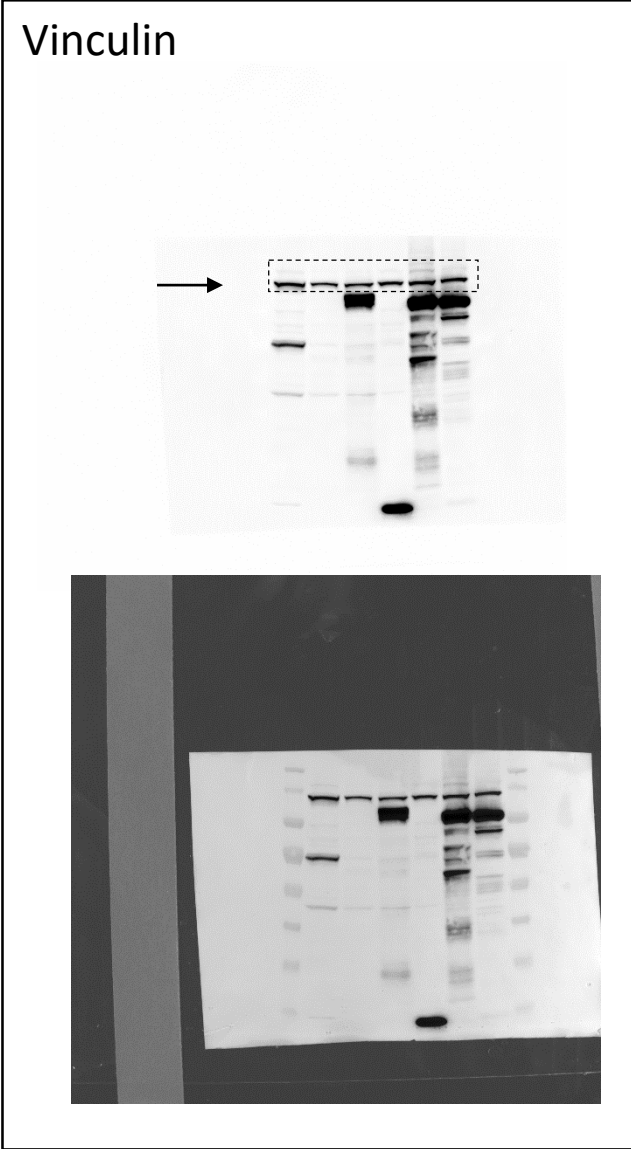
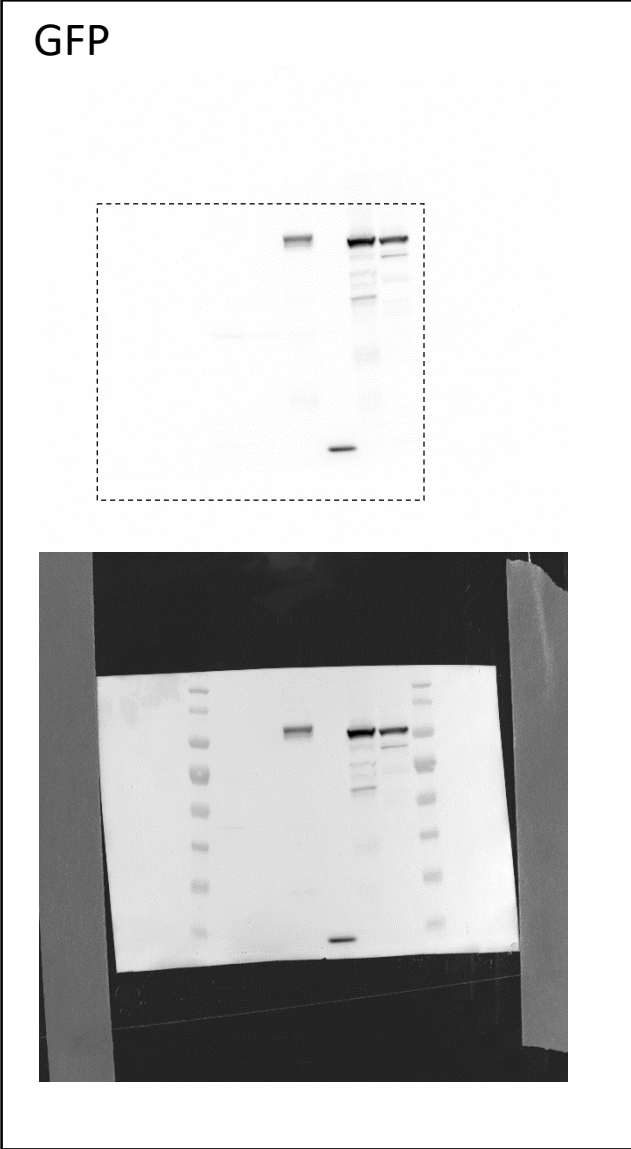
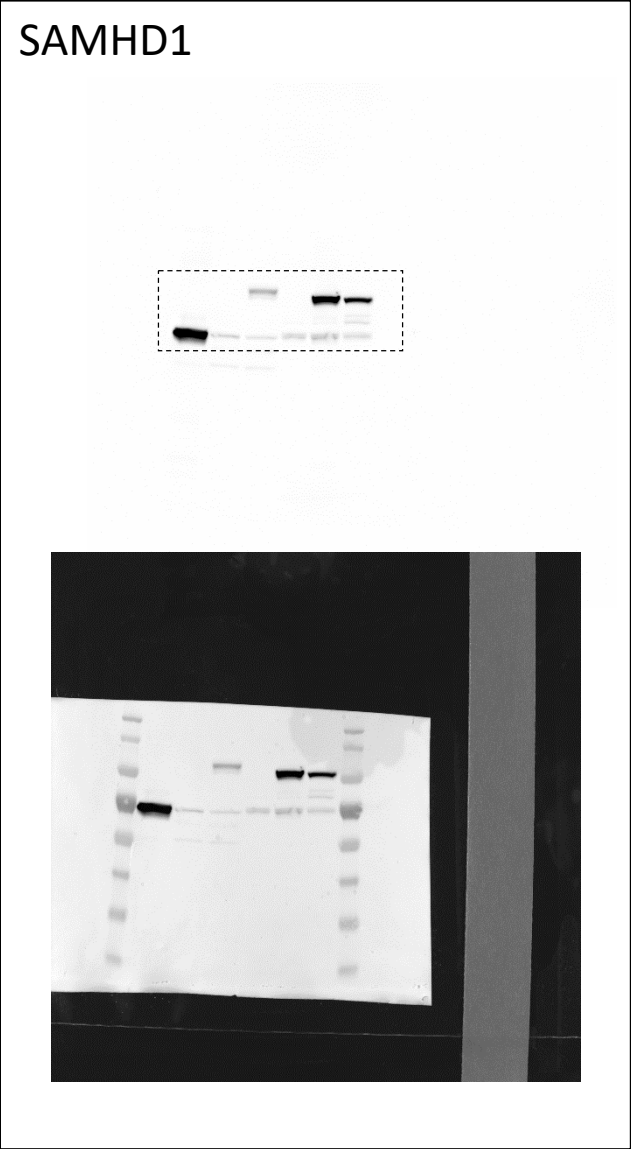
PCR SAMHD1 KI



PCR *CD46 locus* (Loading control)

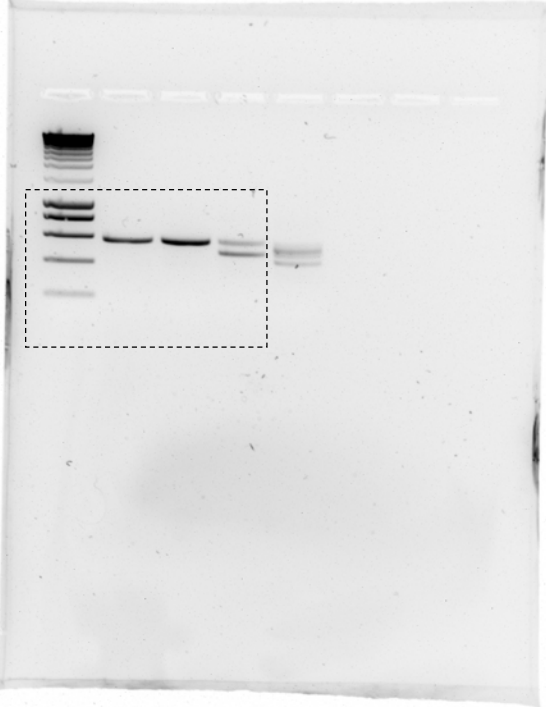


Source data Figure 5d

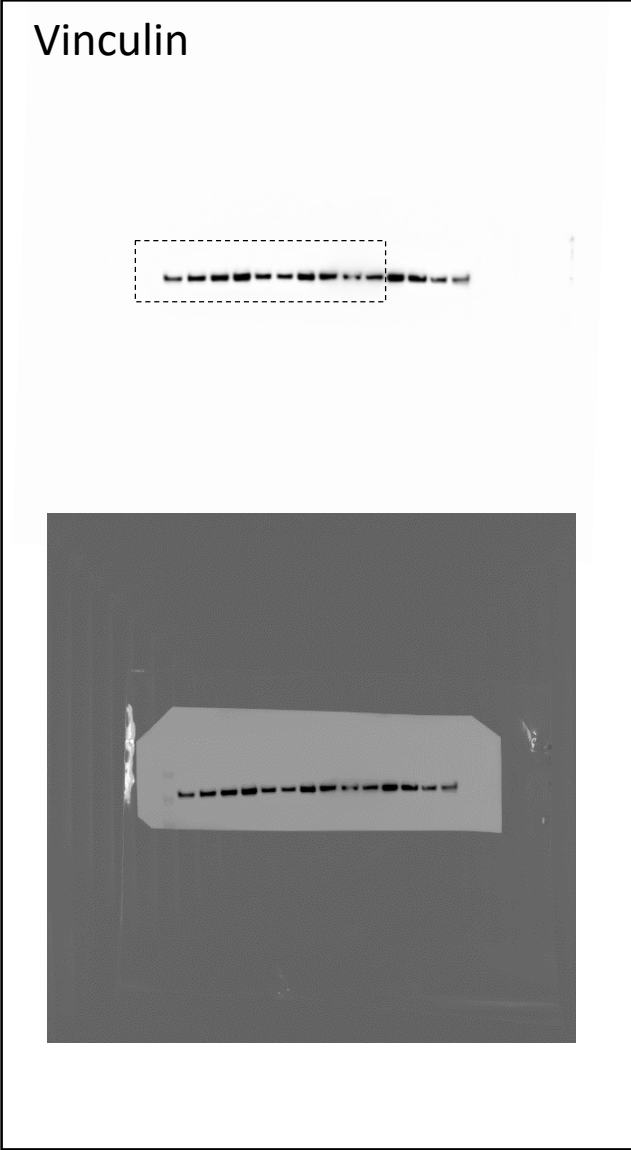
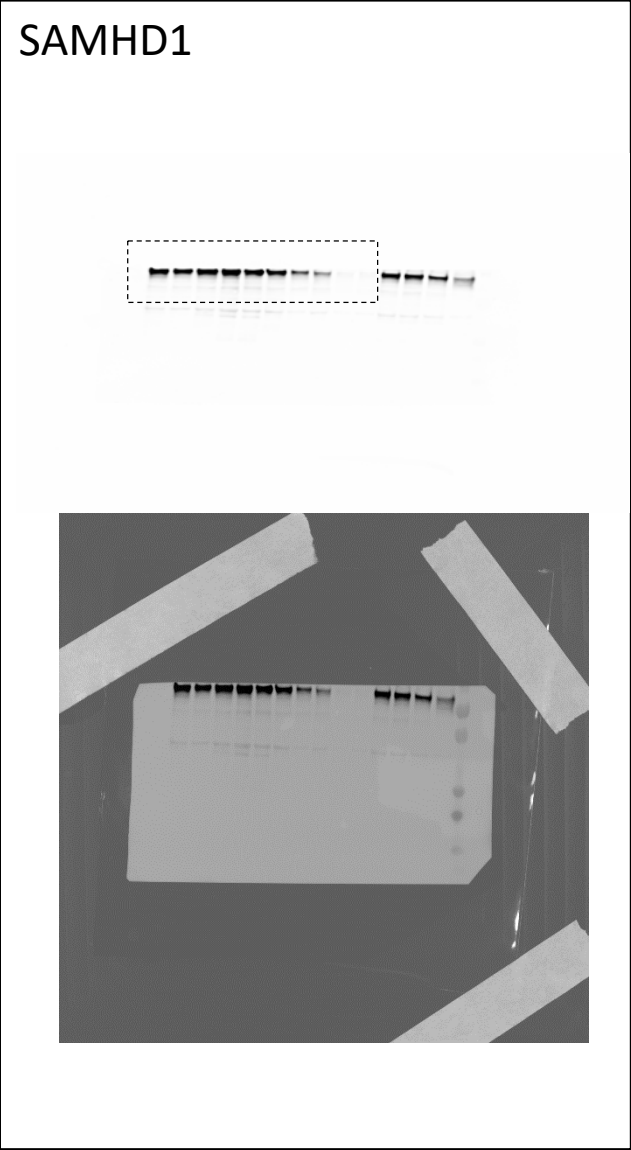


The same membrane was re-probed first against SAMHD1, then GFP and then against Vinculin.

Source Extended Data Figure 2c



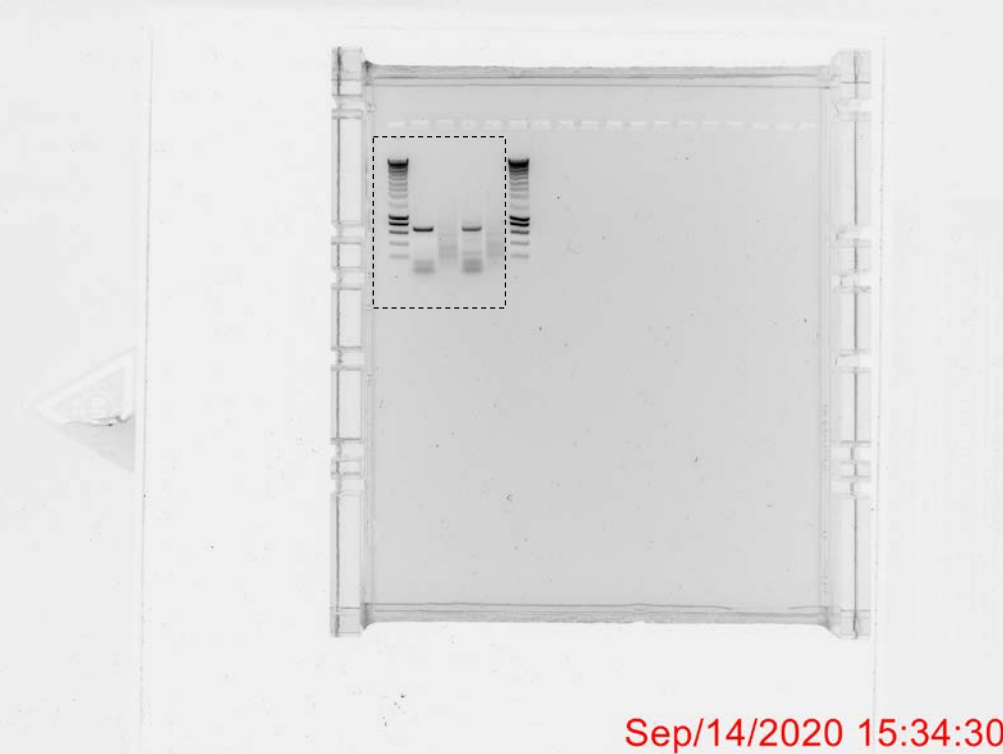
Source Extended Data Figure 4b



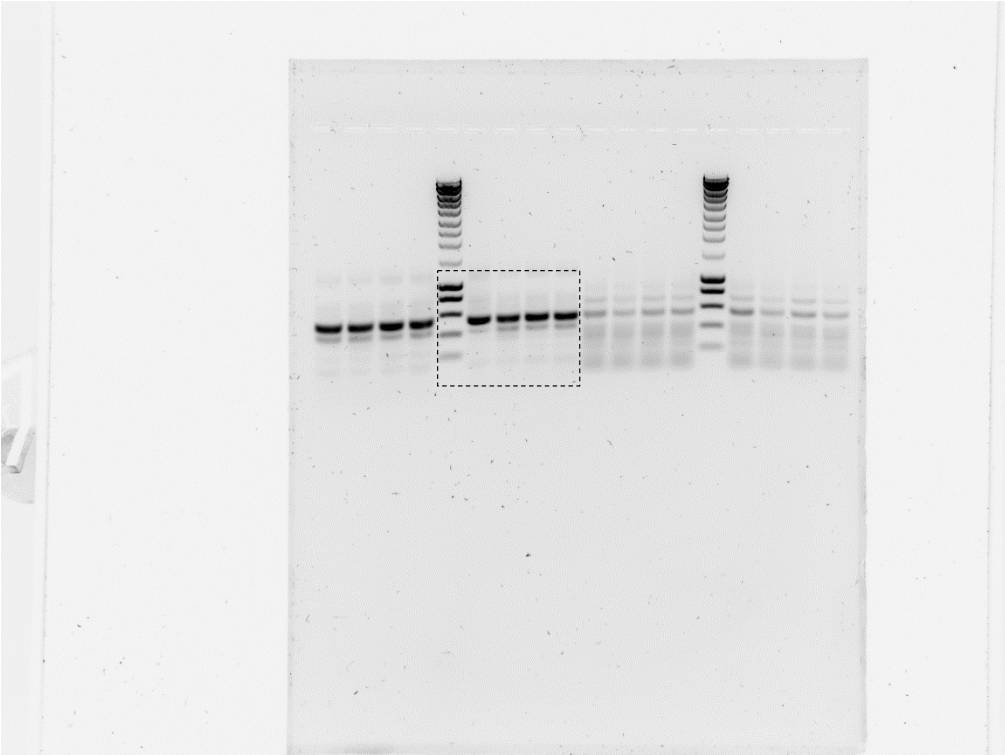
The membrane was cut and the bottom part was probed against SAMHD1, the top part against Vinculin



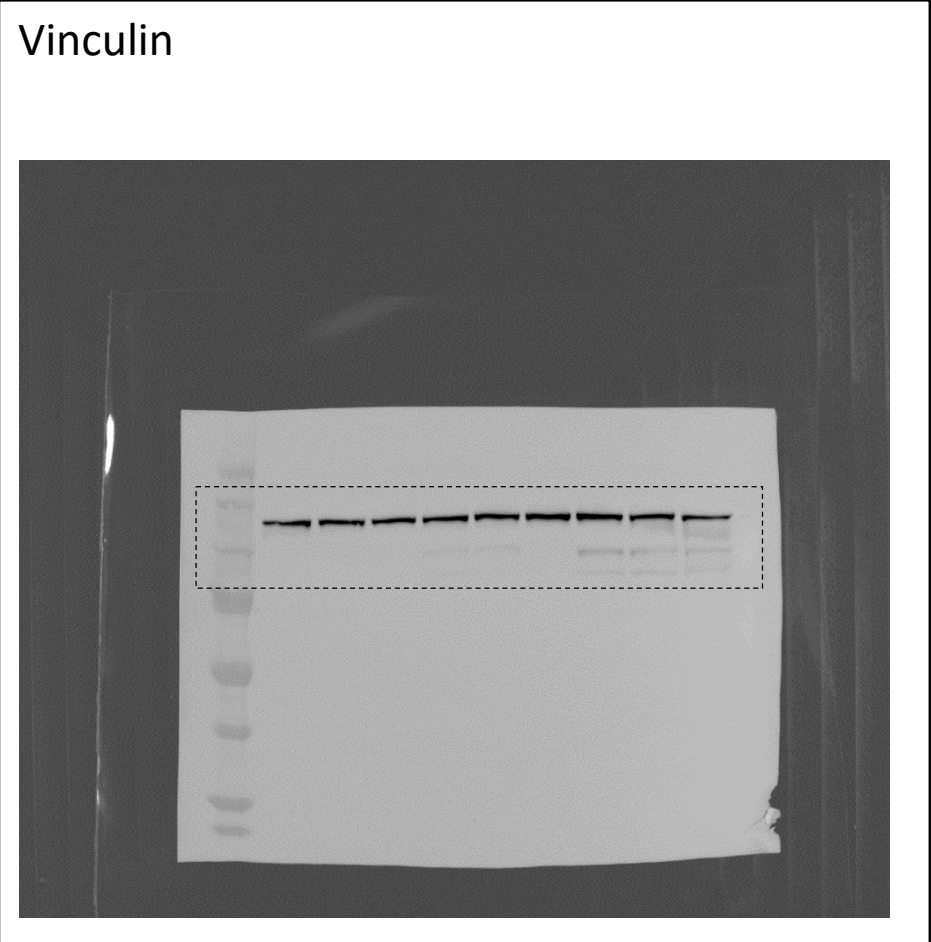
PCR SAMHD1 KI



PCR *CD46 locus* (Loading control)



Source Extended Data Figure 9



The same membrane was re-probed first against SAMHD1 and then against Vinculin.