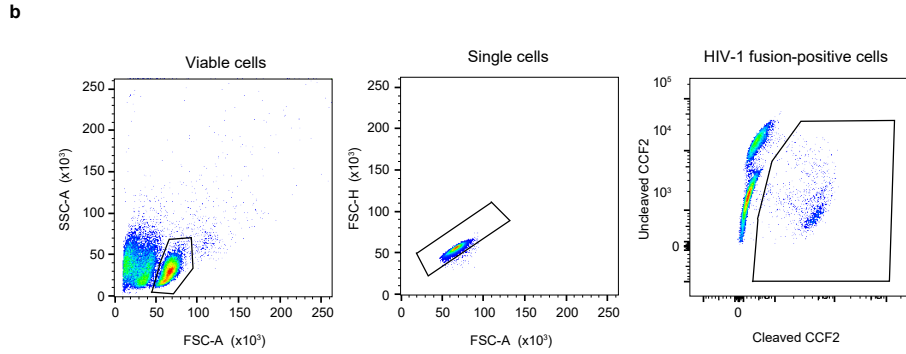
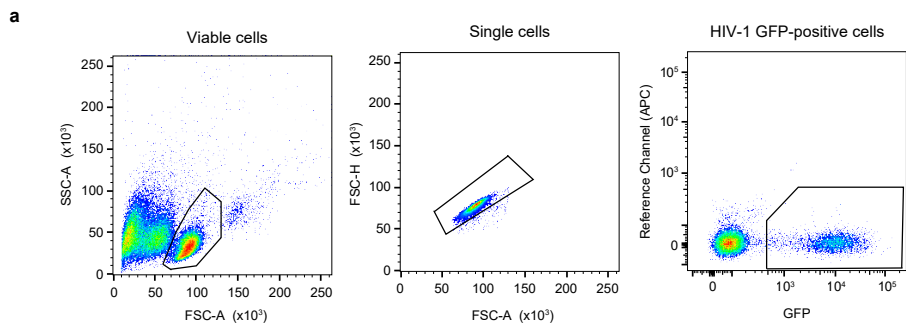

Supplementary information

Rapid, efficient and activation-neutral gene editing of polyclonal primary human resting CD4⁺ T cells allows complex functional analyses

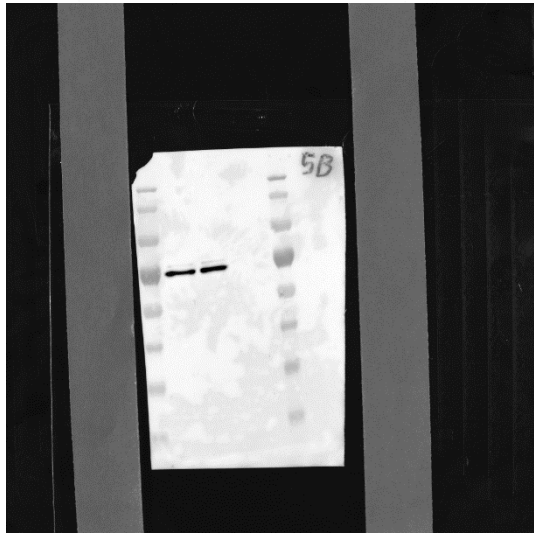
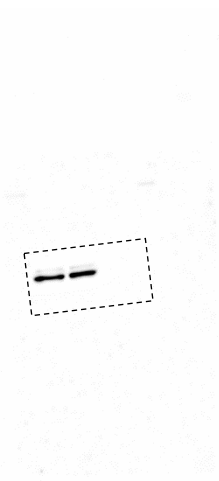
In the format provided by the authors and unedited



Supplementary Fig. 1

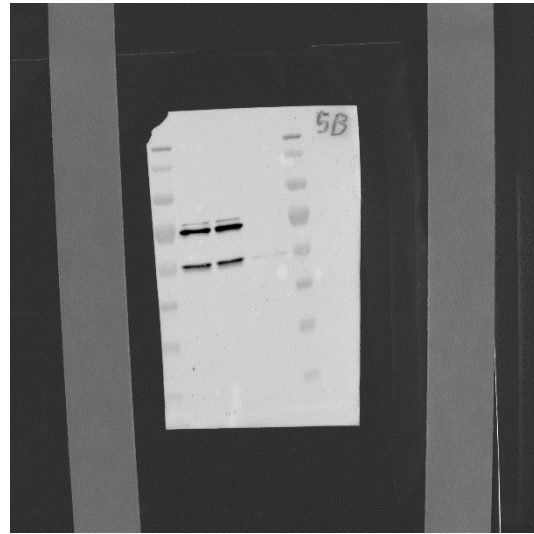
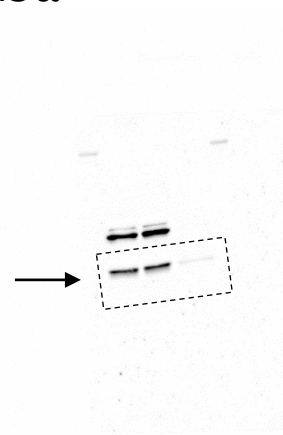
a

CPSF6



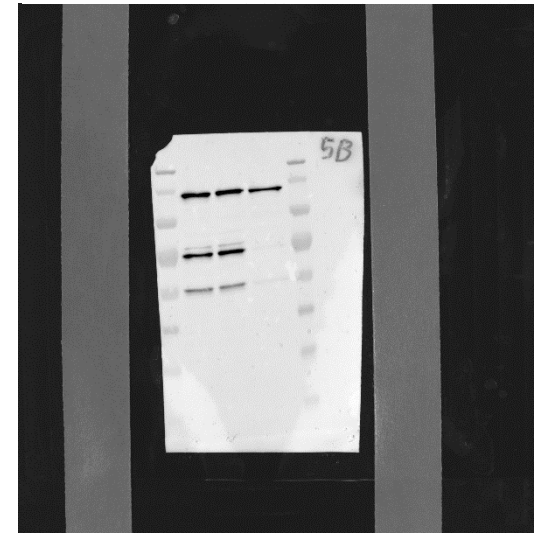
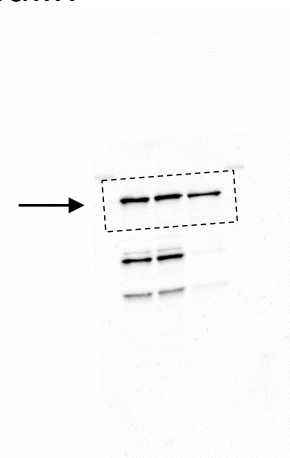
b

TRIM5 α

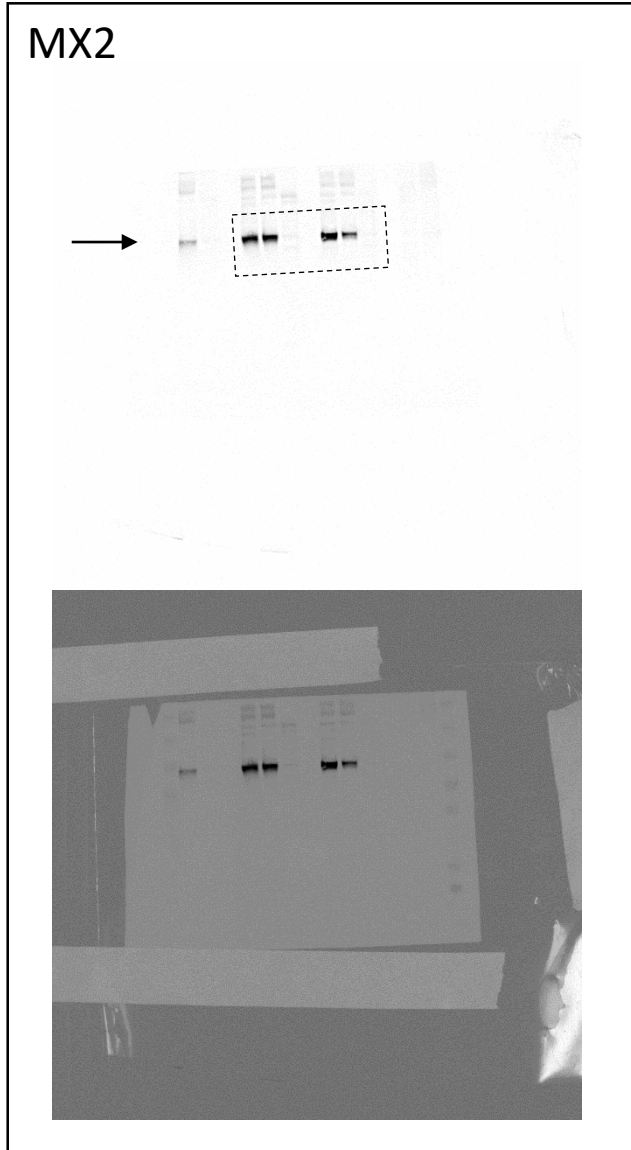


c

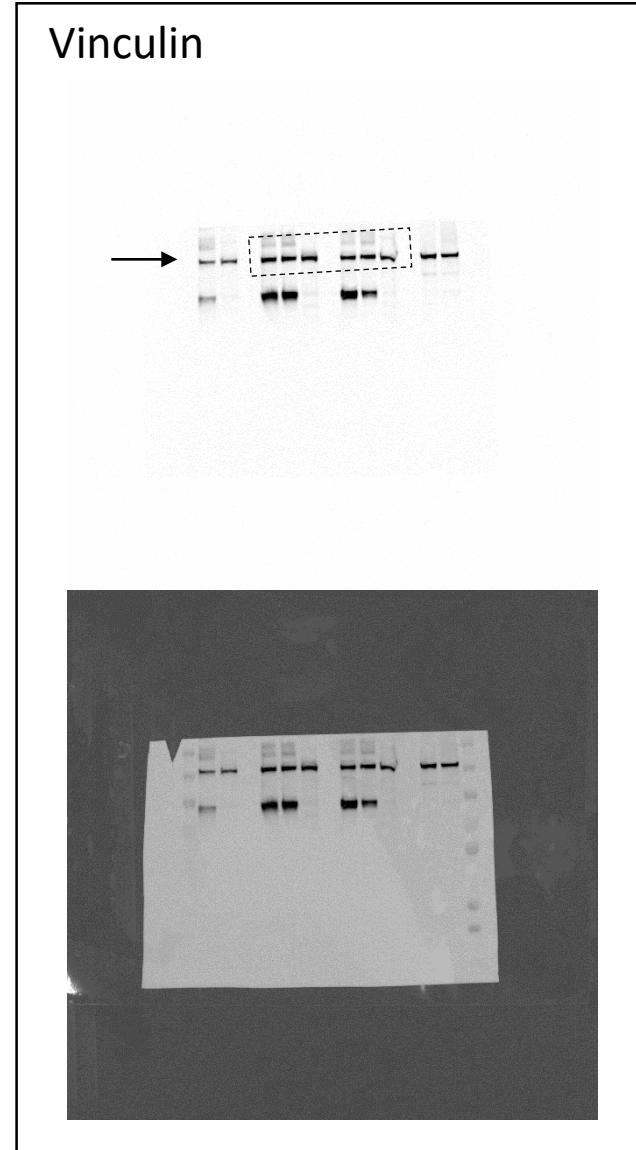
Vinculin



a



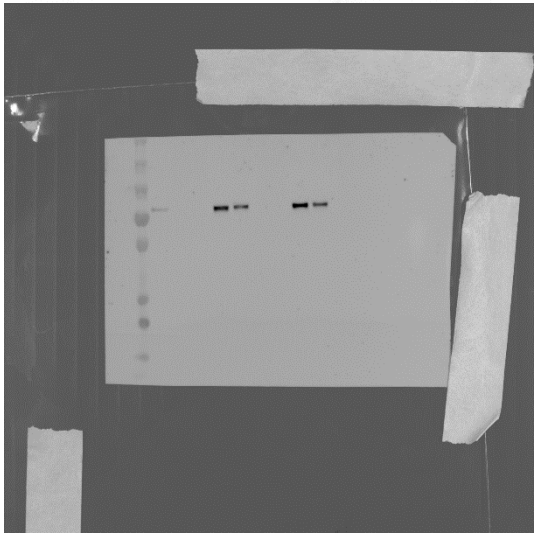
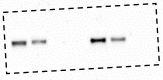
b



Supplementary Fig. 3

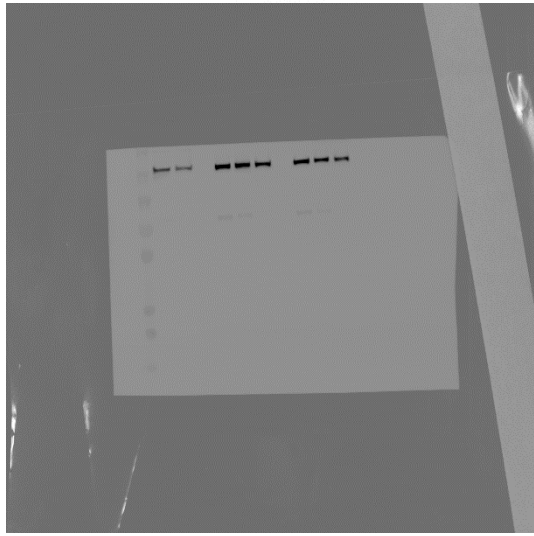
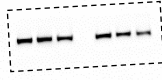
a

CPSF6



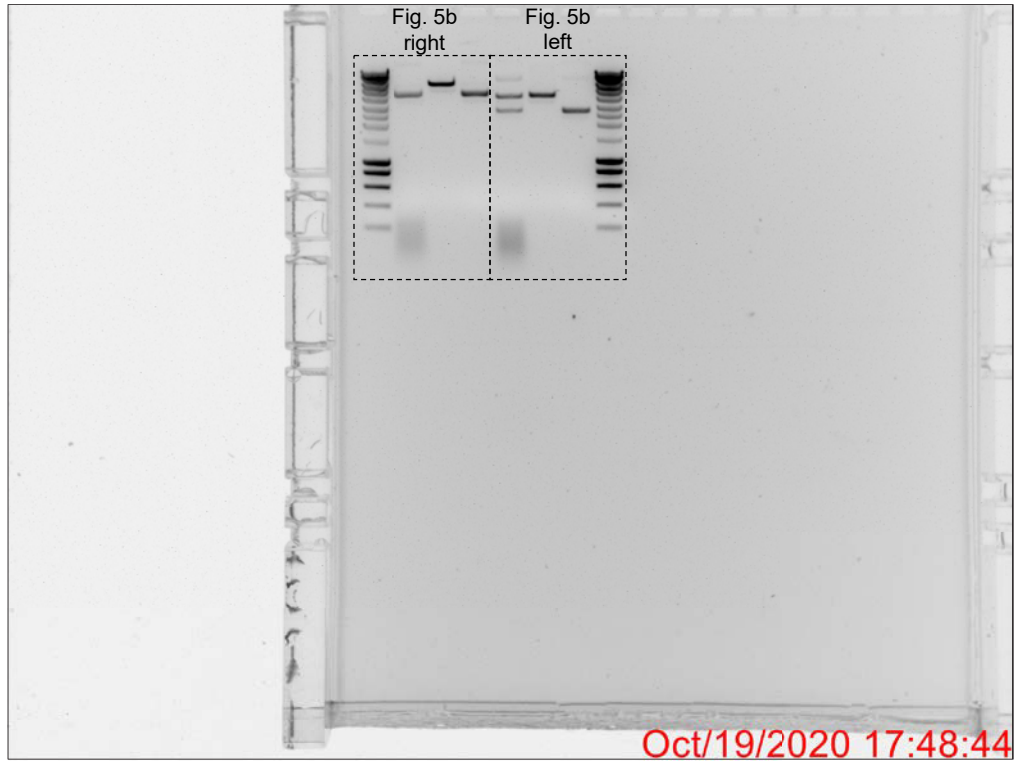
b

Vinculin

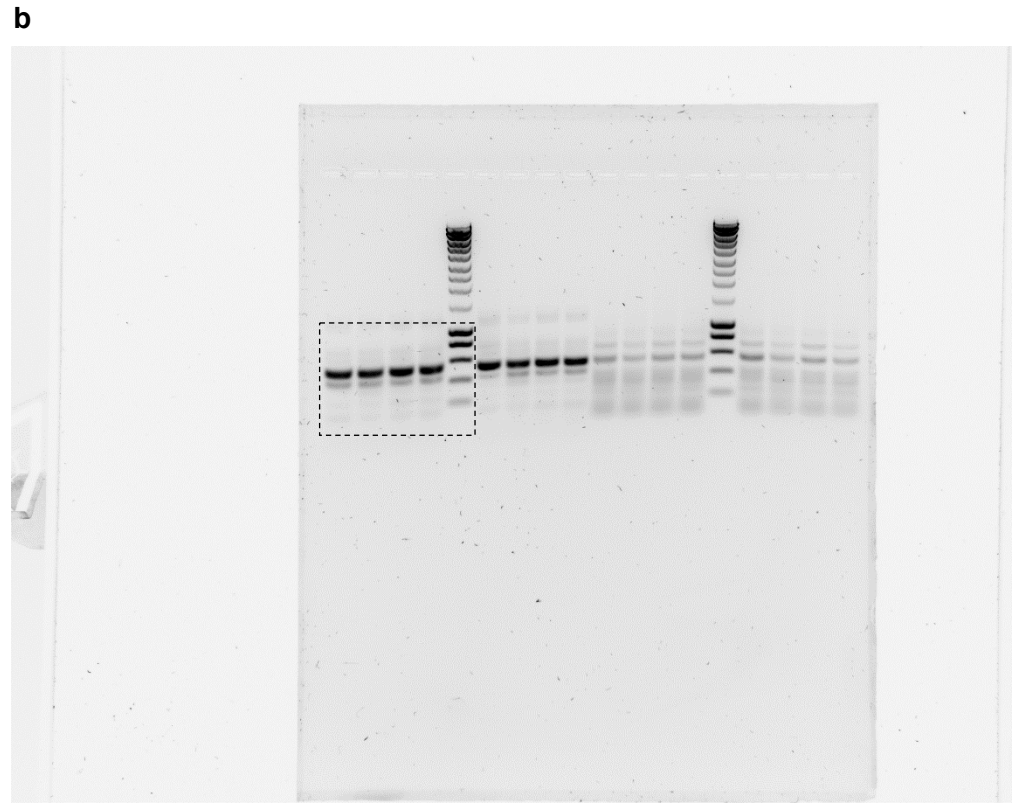
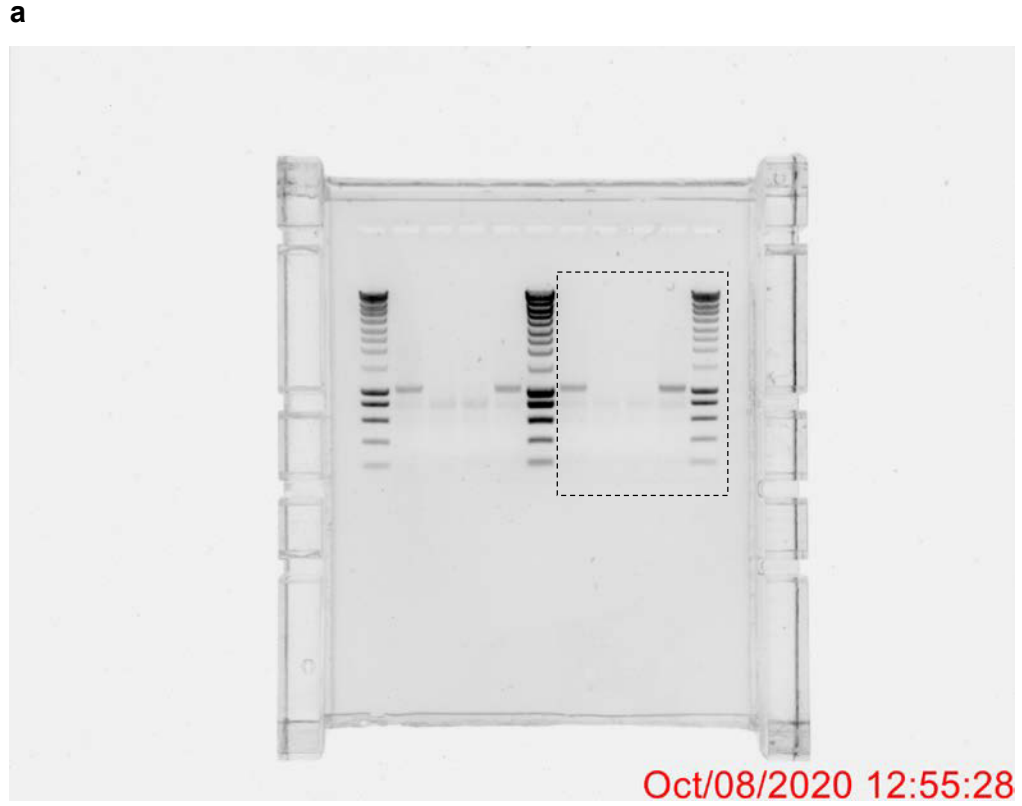


Supplementary Fig. 4

a



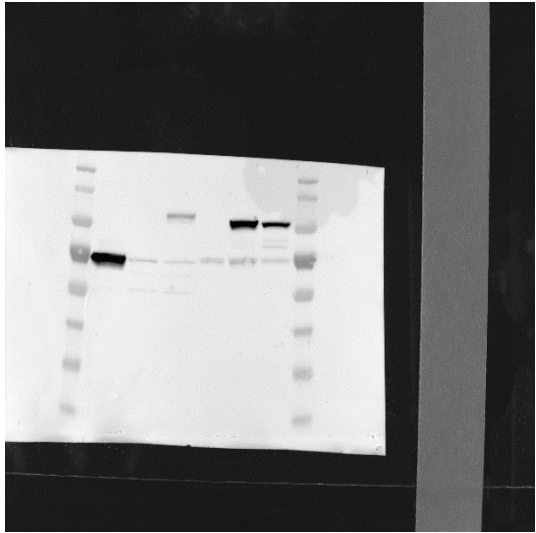
Supplementary Fig. 5



Supplementary Fig. 6

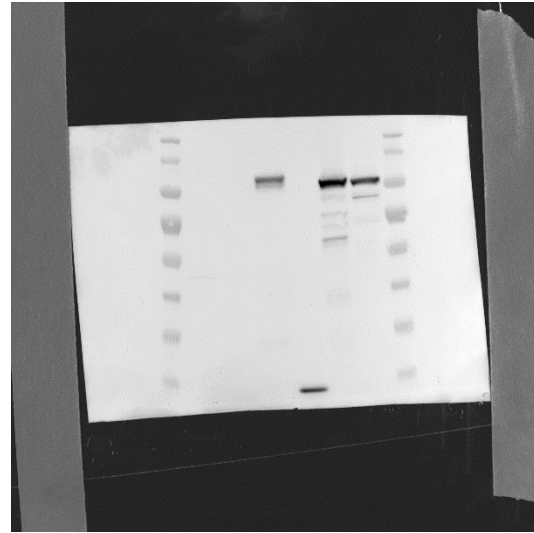
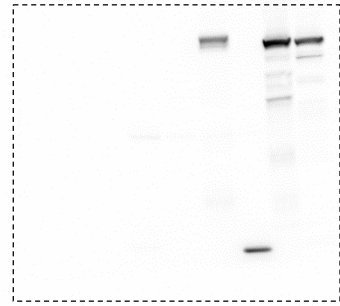
a

SAMHD1



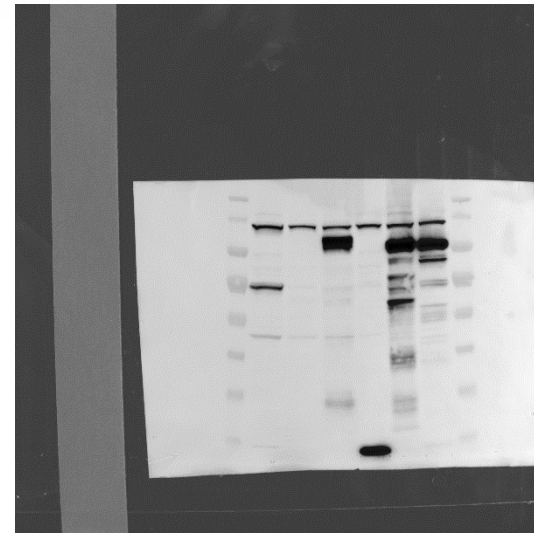
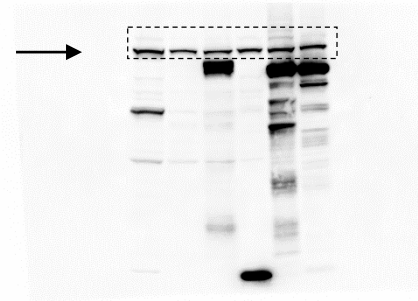
b

GFP



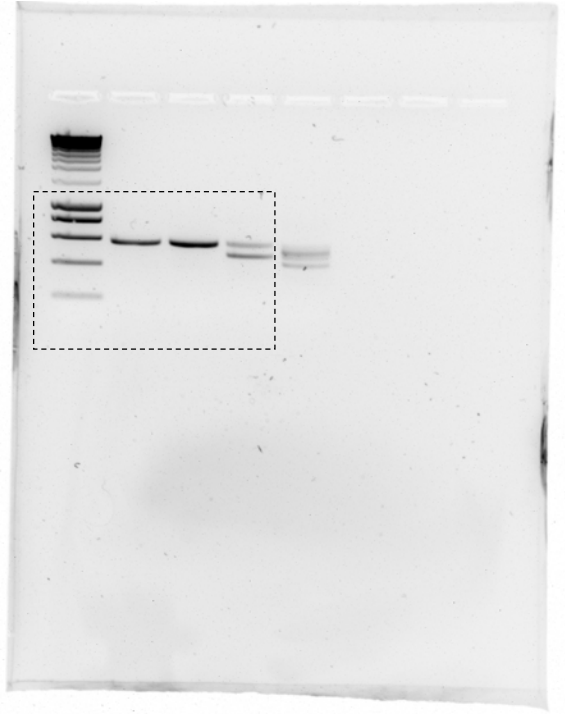
c

Vinculin



Supplementary Fig. 7

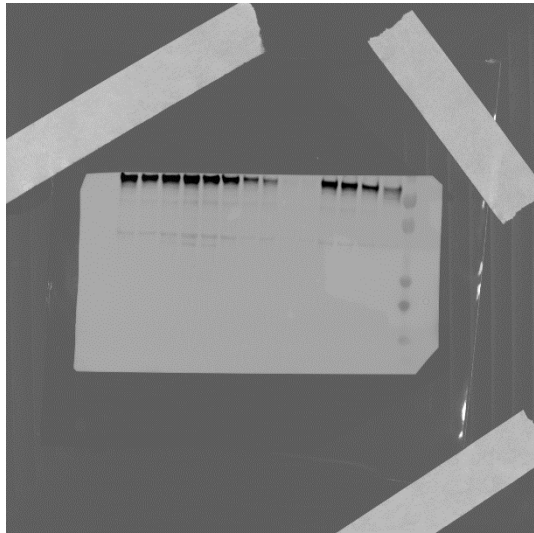
a



Supplementary Fig. 8

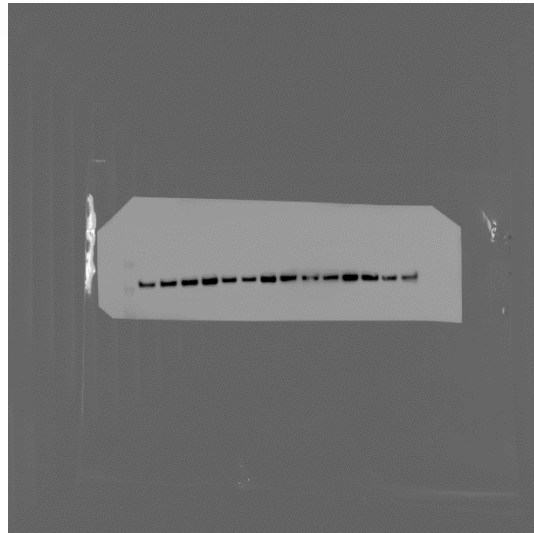
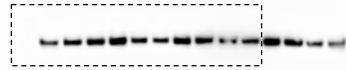
a

SAMHD1

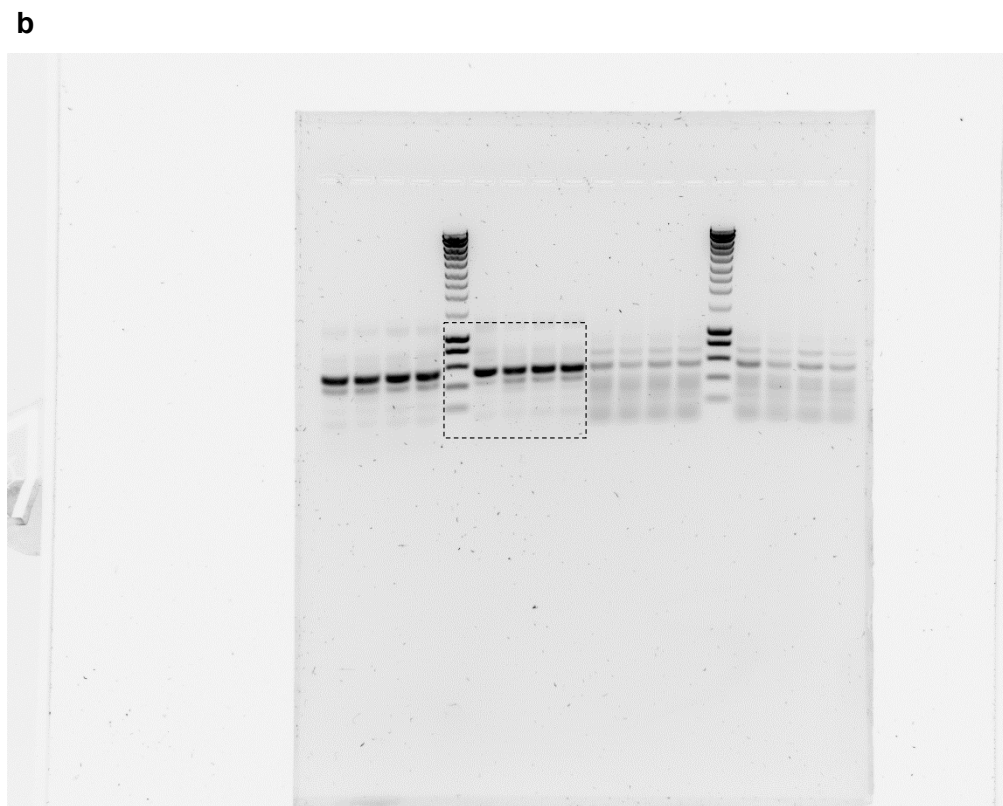
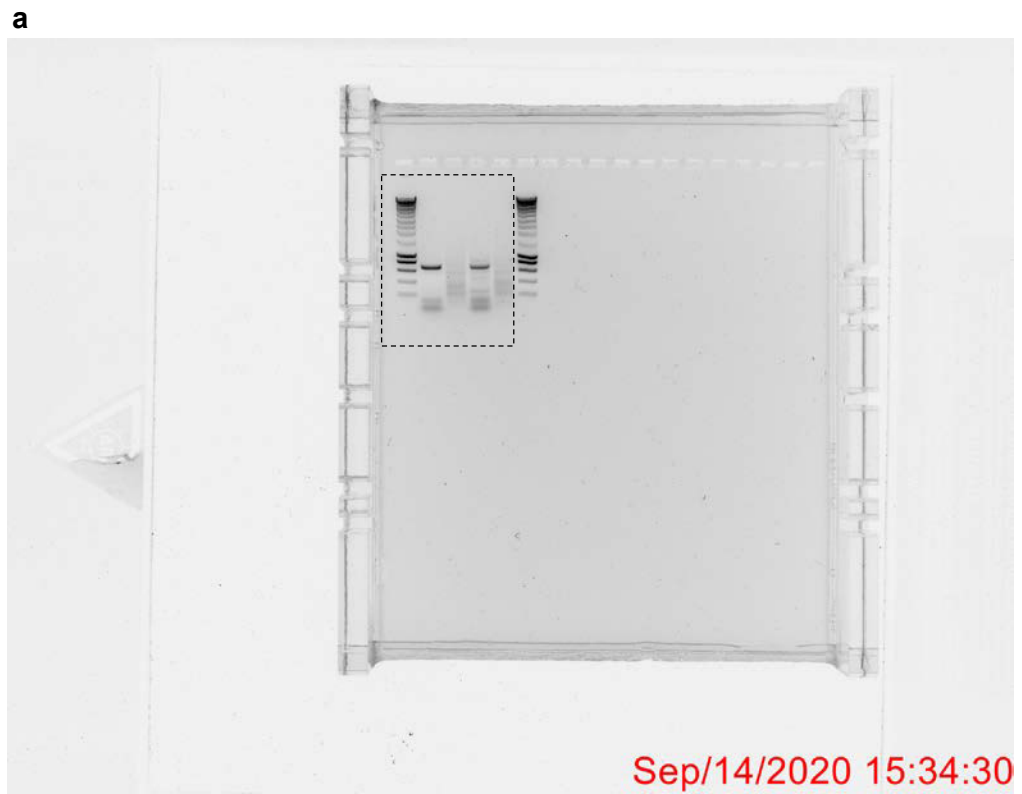


b

Vinculin



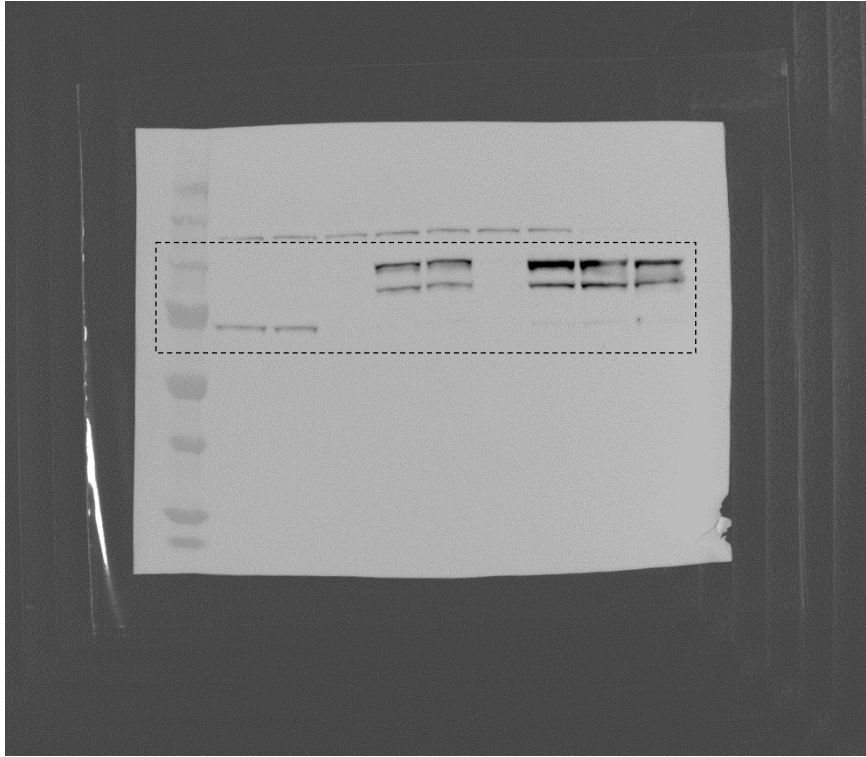
Supplementary Fig. 9



Supplementary Fig. 10

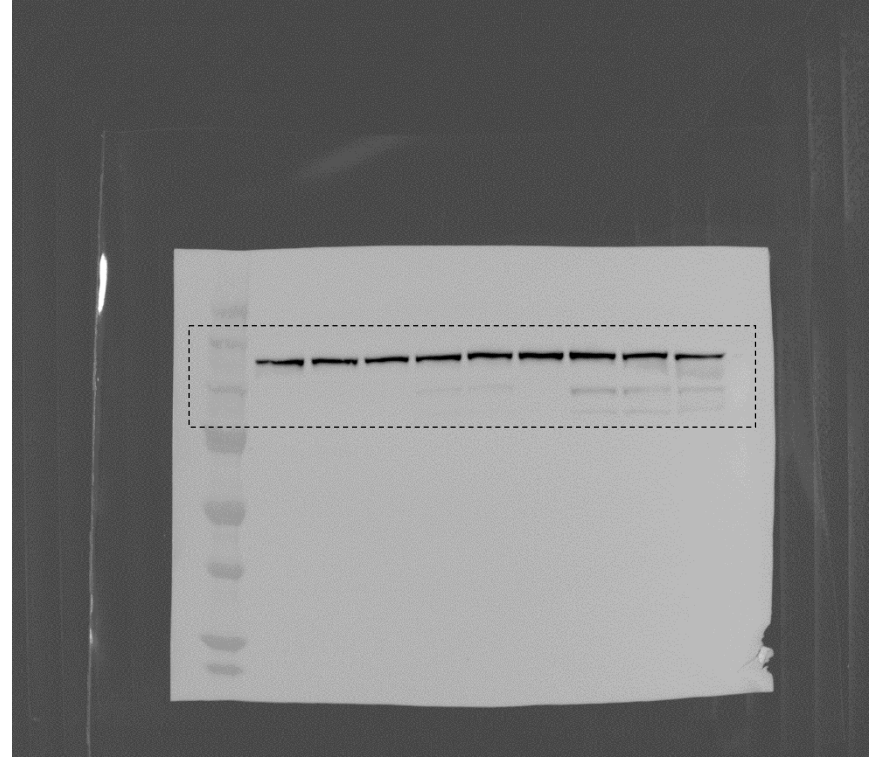
a

SAMHD1



b

Vinculin



Supplementary Fig. 11