

# **Estimating the reduction in US mortality if cigarettes were largely replaced by e-cigarettes**

Published in: Archives of Toxicology

Peter N Lee<sup>1\*</sup>, John S Fry<sup>2</sup>, Stanley Gilliland III<sup>3</sup>, Preston Campbell<sup>3</sup>, Andrew R. Joyce<sup>3</sup>

<sup>1</sup>P N Lee Statistics and Computing Ltd, 17 Cedar Road, Sutton, Surrey, SM2 5DA

<sup>2</sup>RoeLee Statistics Ltd., 17 Cedar Road, Sutton, Surrey SM2 5DA

<sup>3</sup>Consilium Sciences, LLC, 7400 Beaufont Springs Drive, Suite 300, N. Chesterfield, VA 23325

\* Author for correspondence

E-mail: Peterlee@pnlee.co.uk

## **ONLINE RESOURCE 8**

### **Supplemental Figures**

#### **Description of Figures**

**Fig. S8.1** PHIM-predicted prevalence of tobacco use in males in the Null and Main Scenarios

Prevalences are shown by time of follow-up for three selected age groups (30-34, 50-54 and 70-74).

**Fig. S8.2** PHIM-predicted prevalence of tobacco use in females in the Null and Main Scenarios

Again, prevalences are shown by time of follow-up for the three selected age groups (30-34, 50-54 and 70-74).

**Fig. S8.3 Drops in deaths (hundreds)**

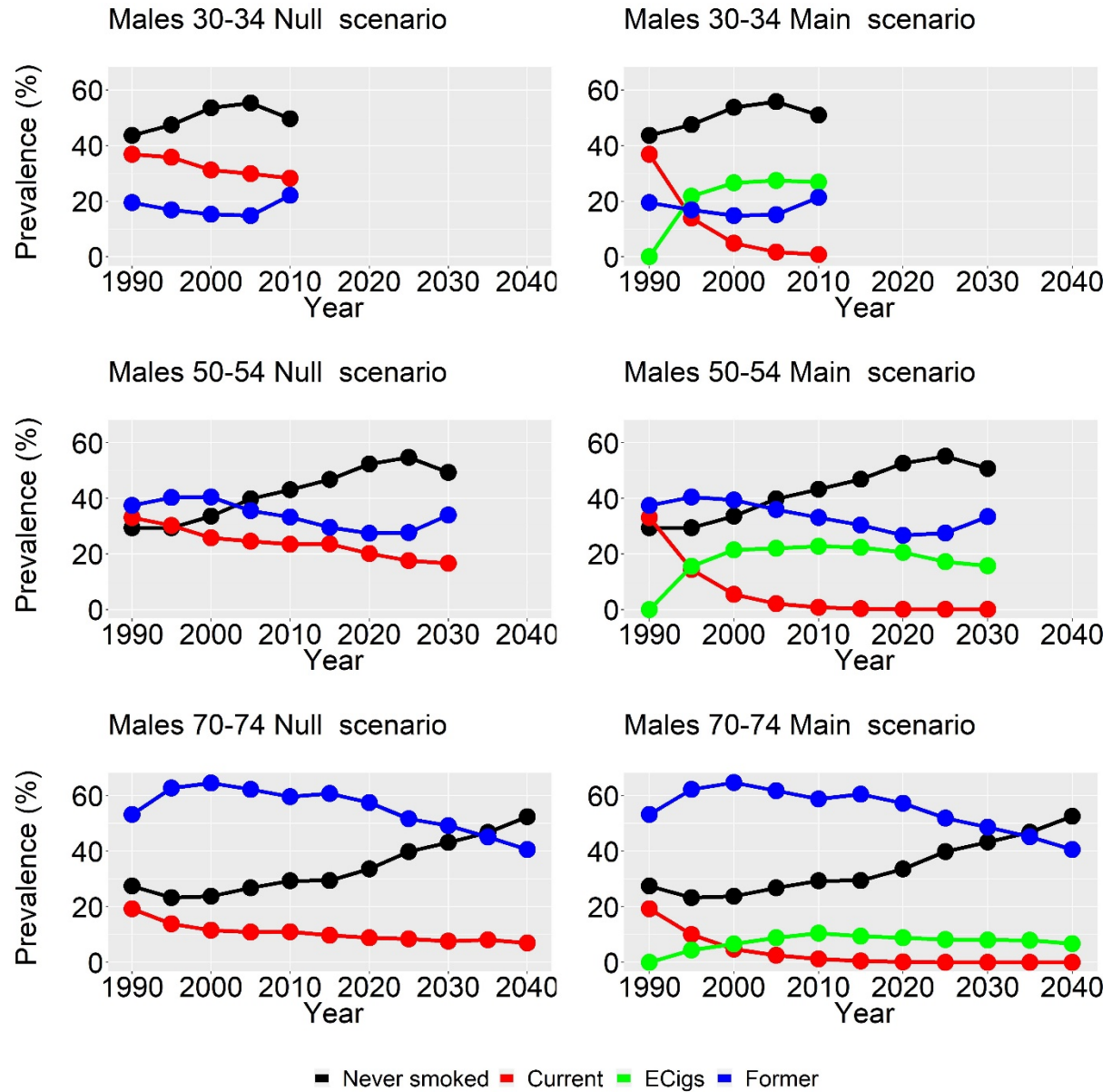
Cumulative drops in deaths comparing the Main and Null Scenarios are shown by sex and disease over the whole follow-up period.

**Fig. S8.4 PHIM-predicted prevalence of tobacco use in the Pessimistic Scenario**

Prevalences are shown by sex and time of follow-up for the three selected age groups (30-34, 50-54 and 70-74).

# Figures

*Fig. S8.1 PHIM-predicted prevalence of tobacco use in males in the Null and Main Scenarios*



**Fig. S8.2** PHIM-predicted prevalence of tobacco use in females in the Null and Main Scenarios

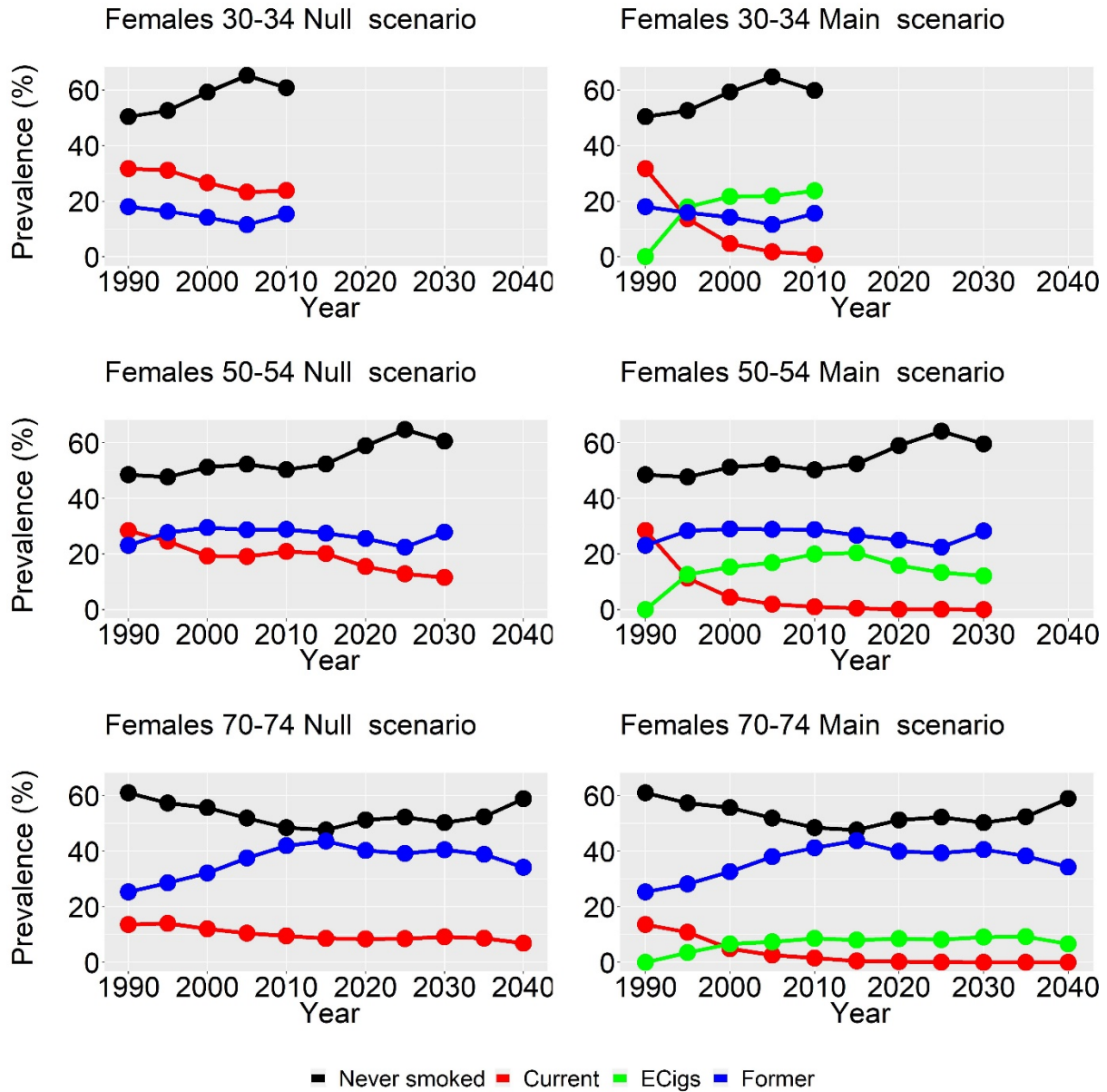
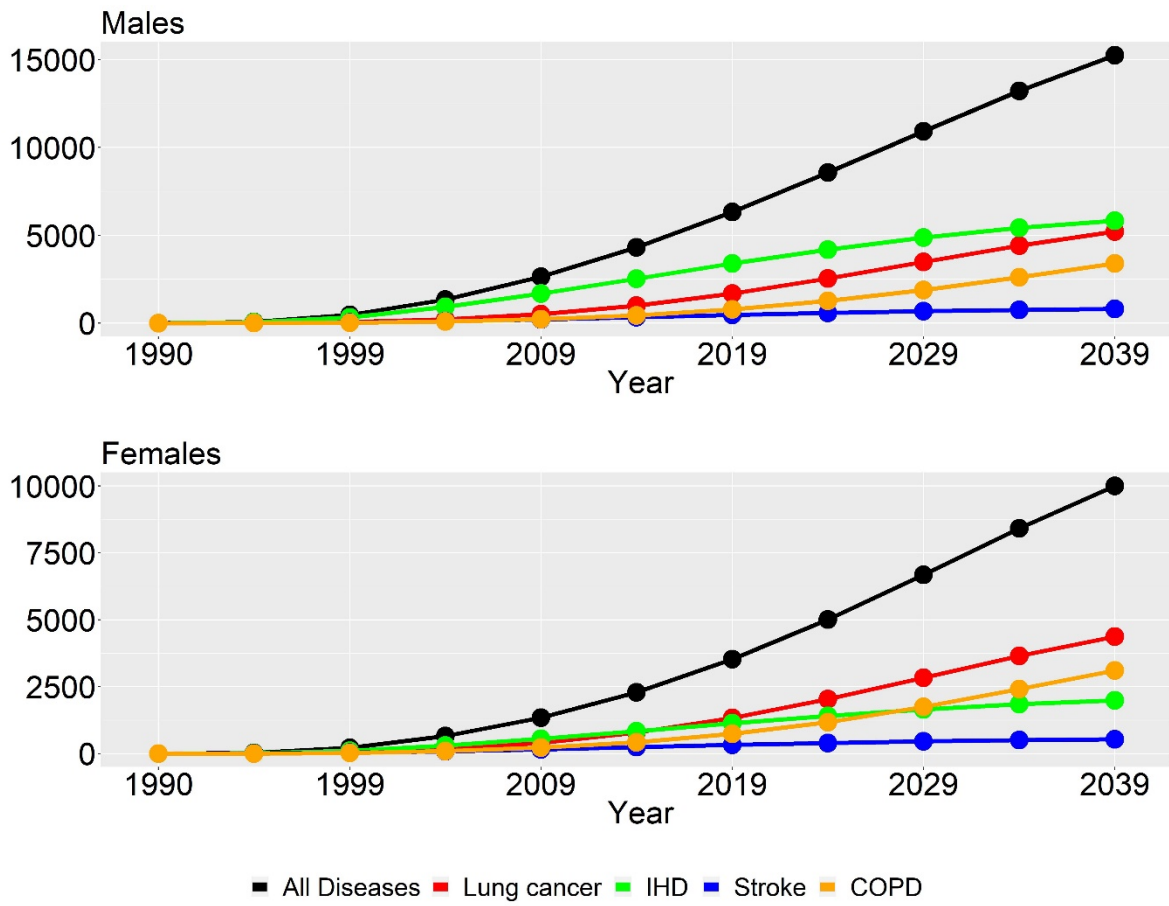


Fig. S8.3 Drops in deaths (hundreds)



**Fig. S8.4** PHIM-predicted prevalence of tobacco use in the Pessimistic Scenario

