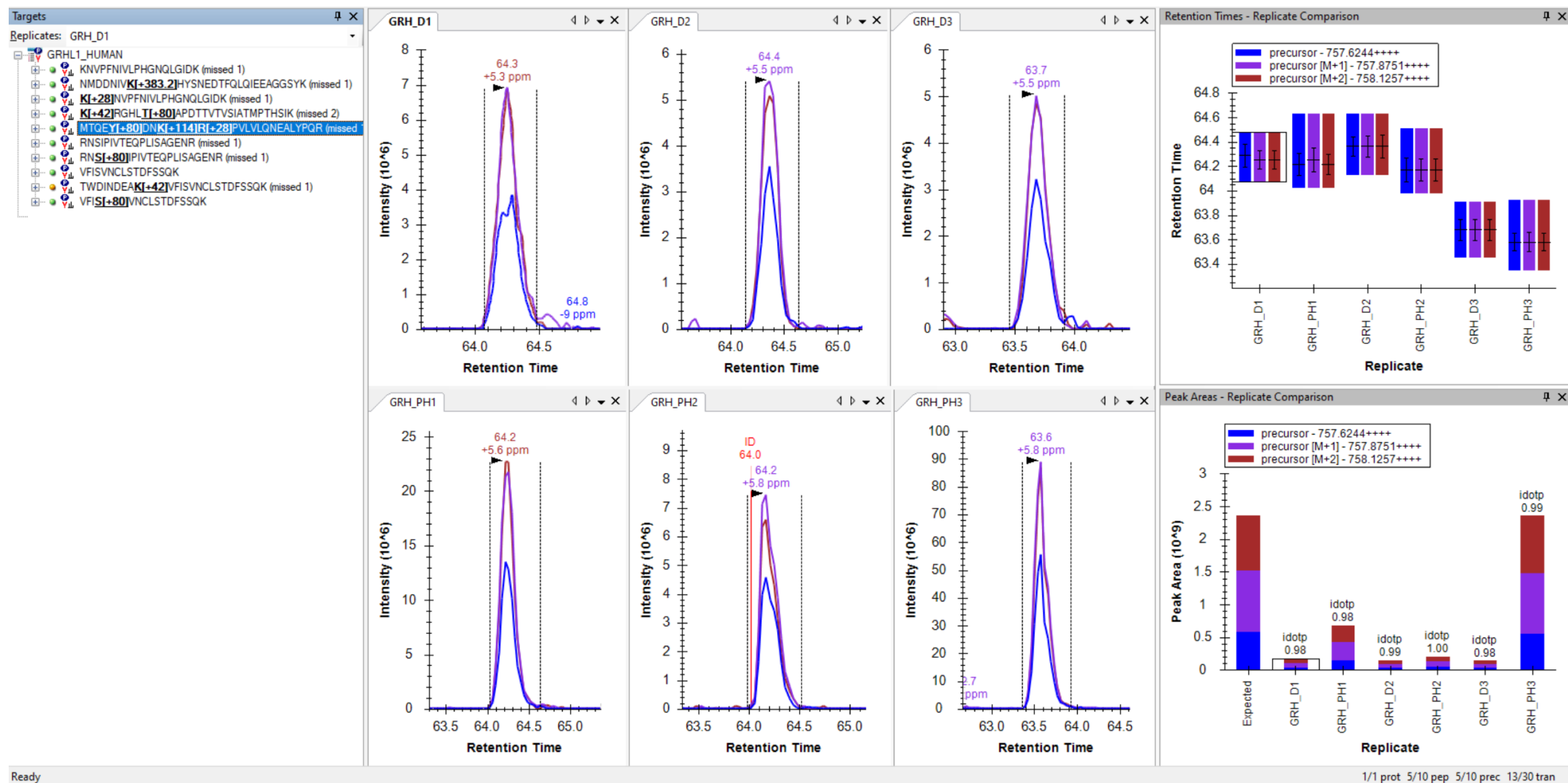


Supplementary Data 7. XICs of GRHL1 post-translational modifications associated with papaverine treatment.

R9 - MTQEY[+80]DNK[+114]R[+28]PVLVLQNEALYPQR

D1-3 = DMSO

PH1-3 = Papaverine

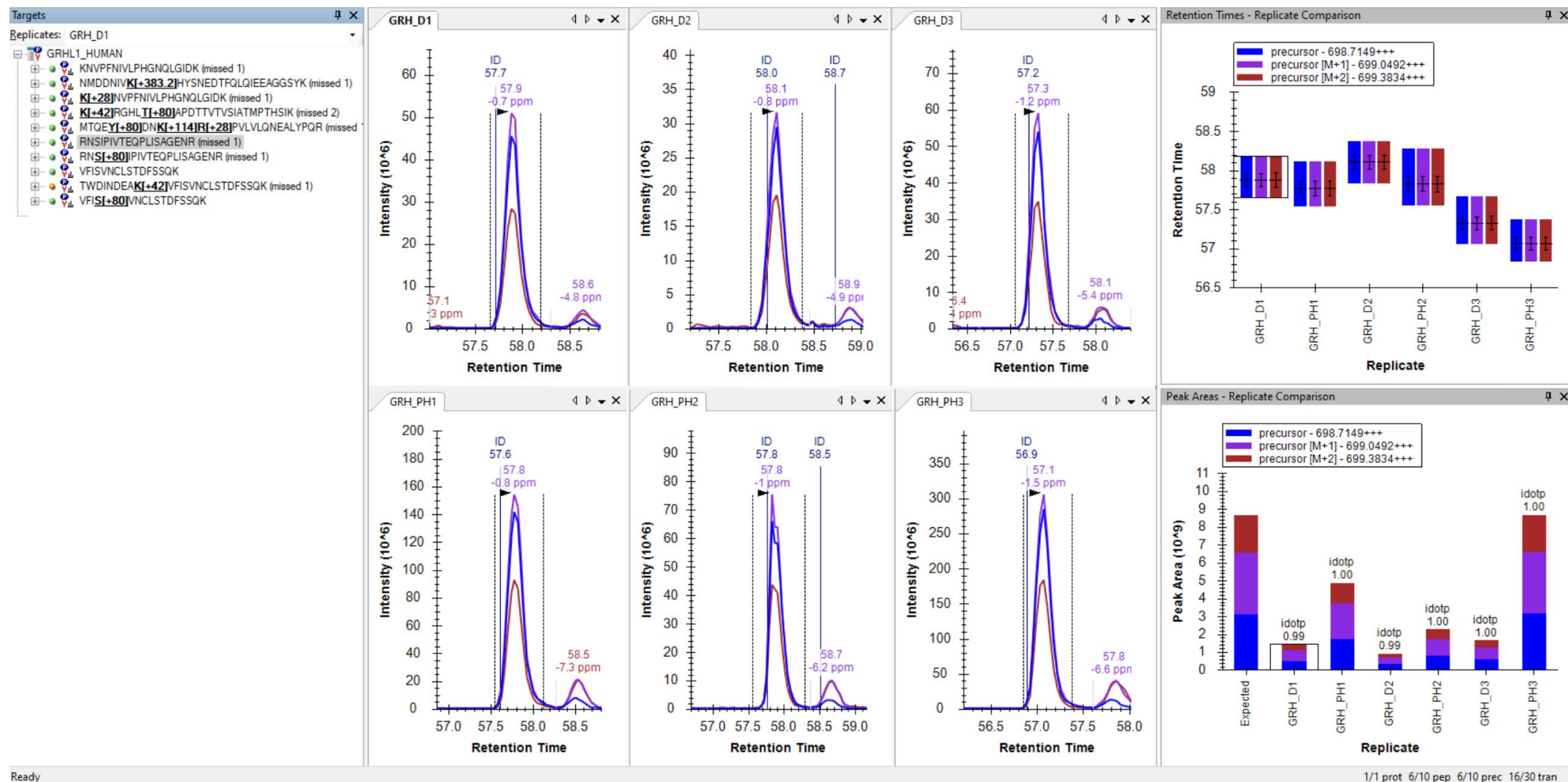


Supplementary Data 7. XICs of GRHL1 post-translational modifications associated with papaverine treatment.

S95 (unmodified) – RNSIPIVTEQPLISAGENR

D1-3 = DMSO

PH1-3 = Papaverine

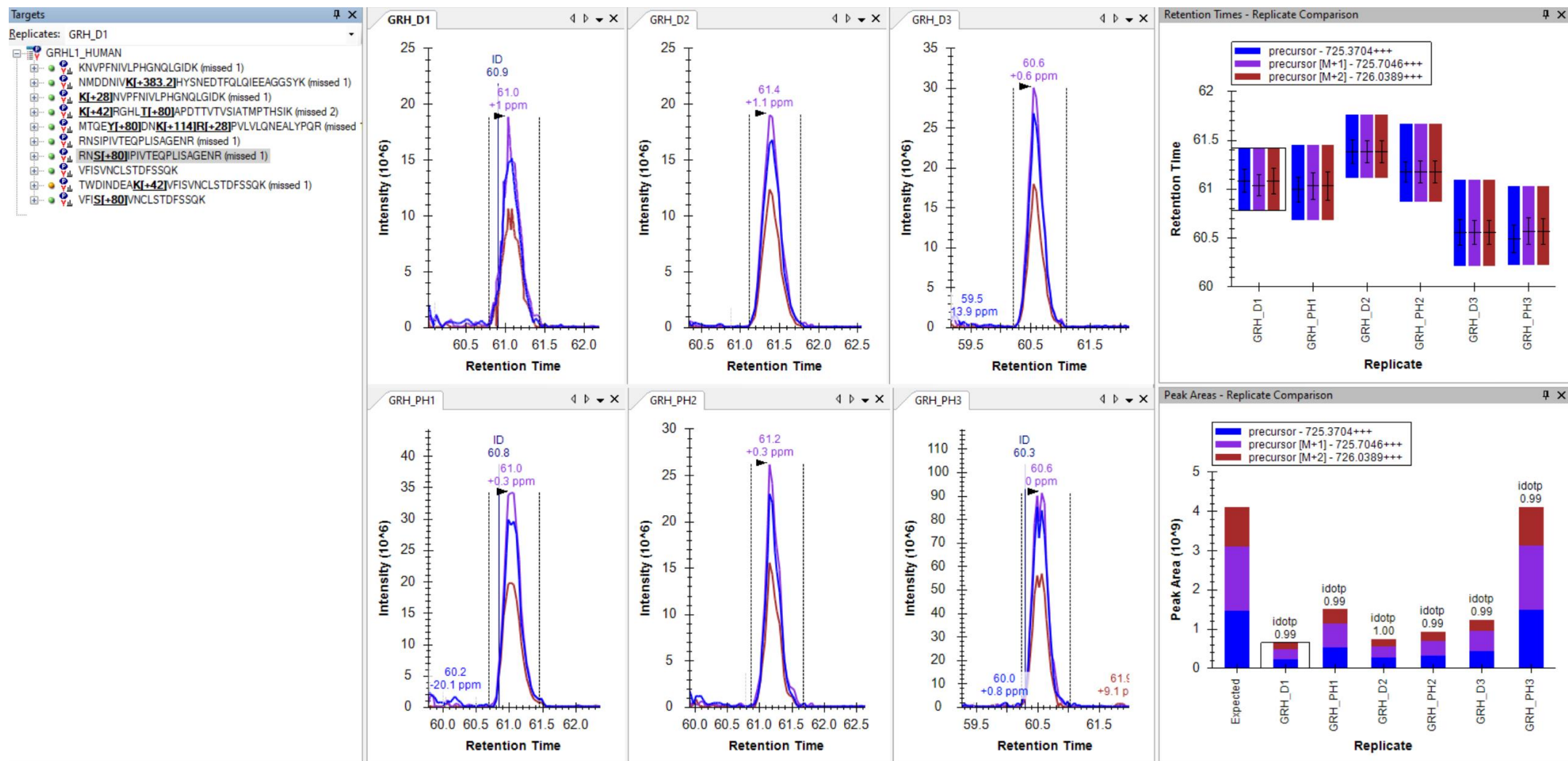


Supplementary Data 7. XICs of GRHL1 post-translational modifications associated with papaverine treatment.

S95 - RNS[+80]IPIVTEQPLISAGENR

D1-3 = DMSO

PH1-3 = Papaverine

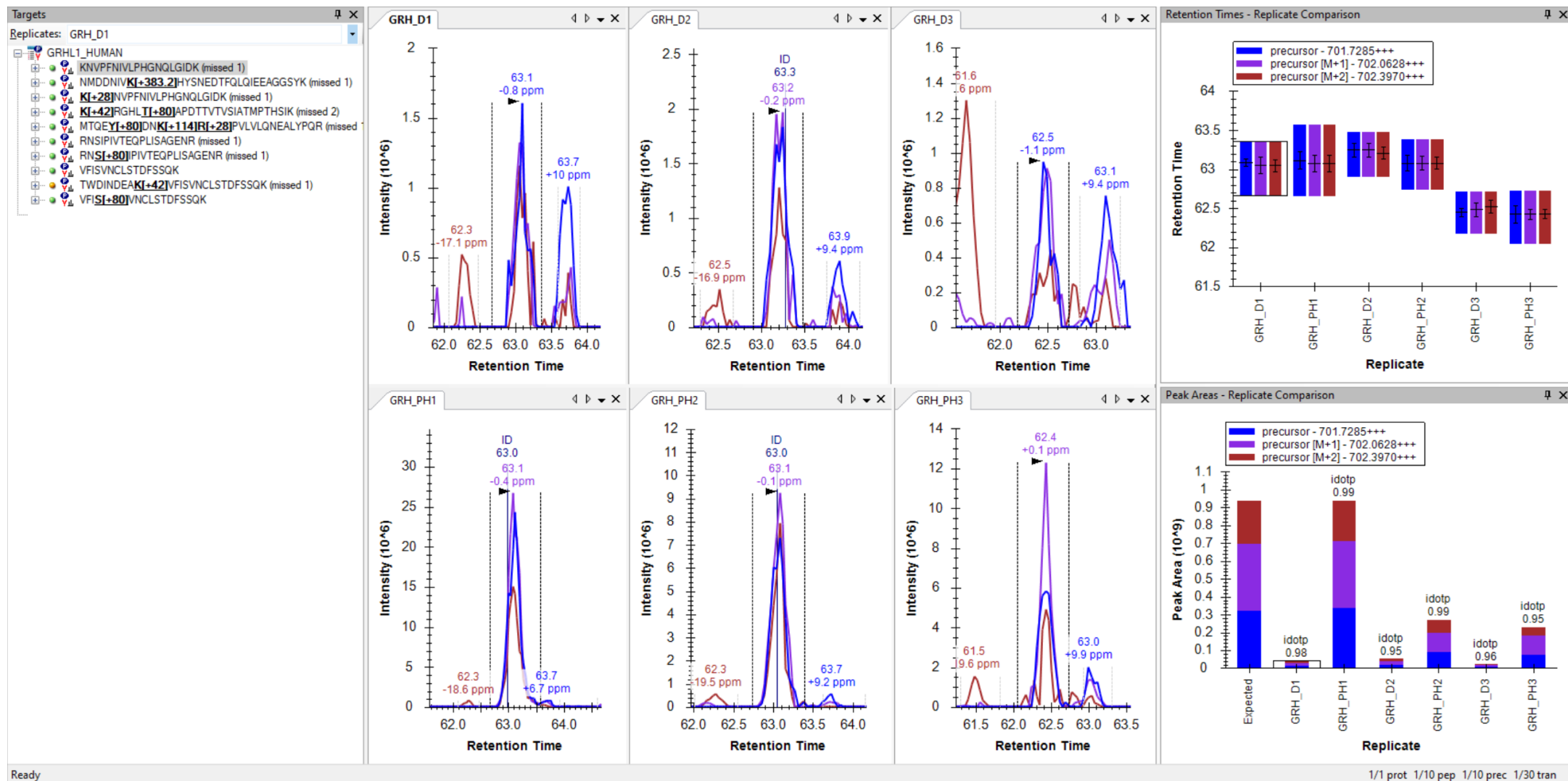


Supplementary Data 7. XICs of GRHL1 post-translational modifications associated with papaverine treatment.

K116 (unmodified) – KNVFPNIVLPHGNQLGIDK

D1-3 = DMSO

PH1-3 = Papaverine

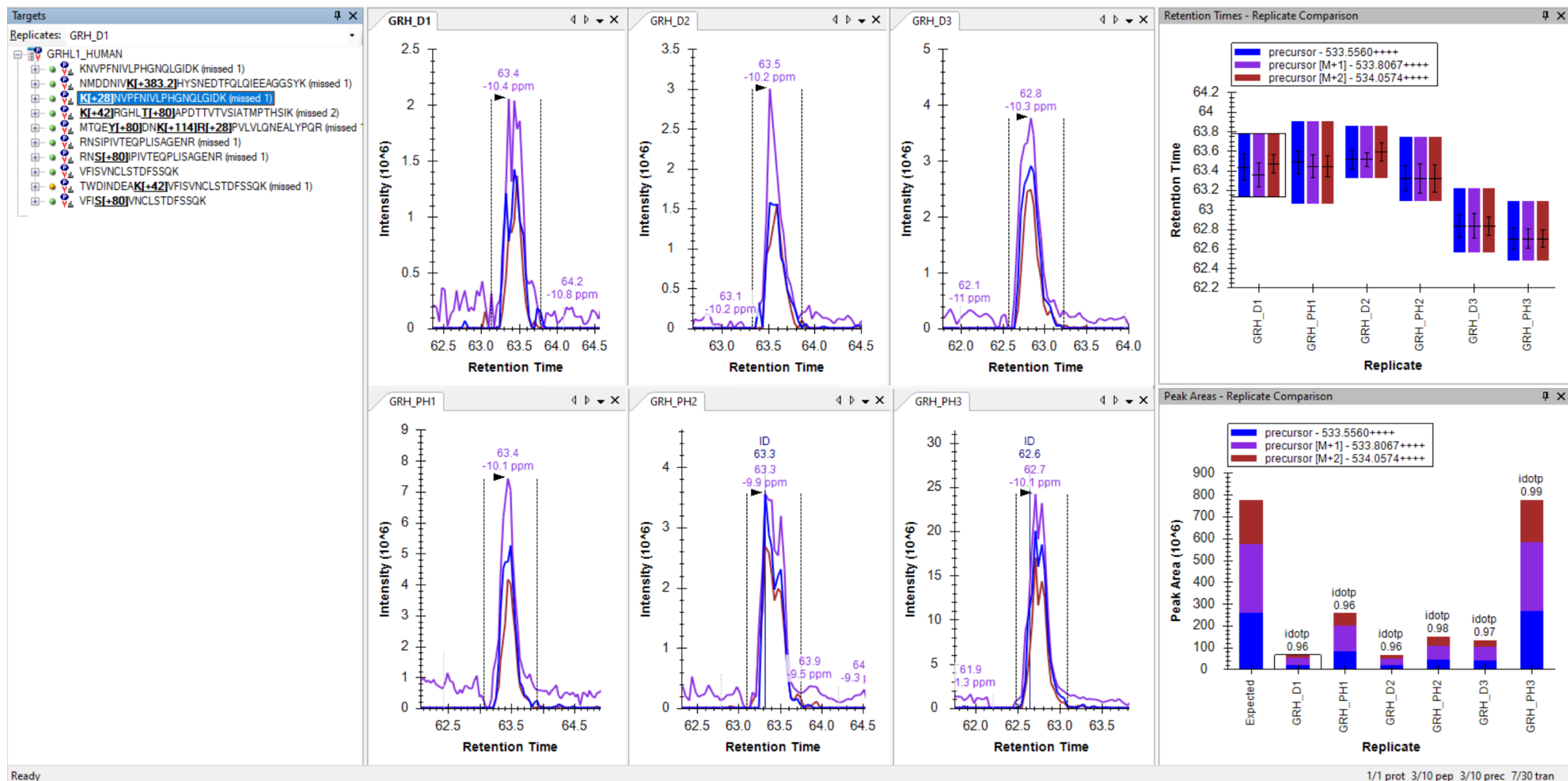


Supplementary Data 7. XICs of GRHL1 post-translational modifications associated with papaverine treatment.

K116 - K[+28]NVPFNIVLPHGNQLGIDK

D1-3 = DMSO

PH1-3 = Papaverine

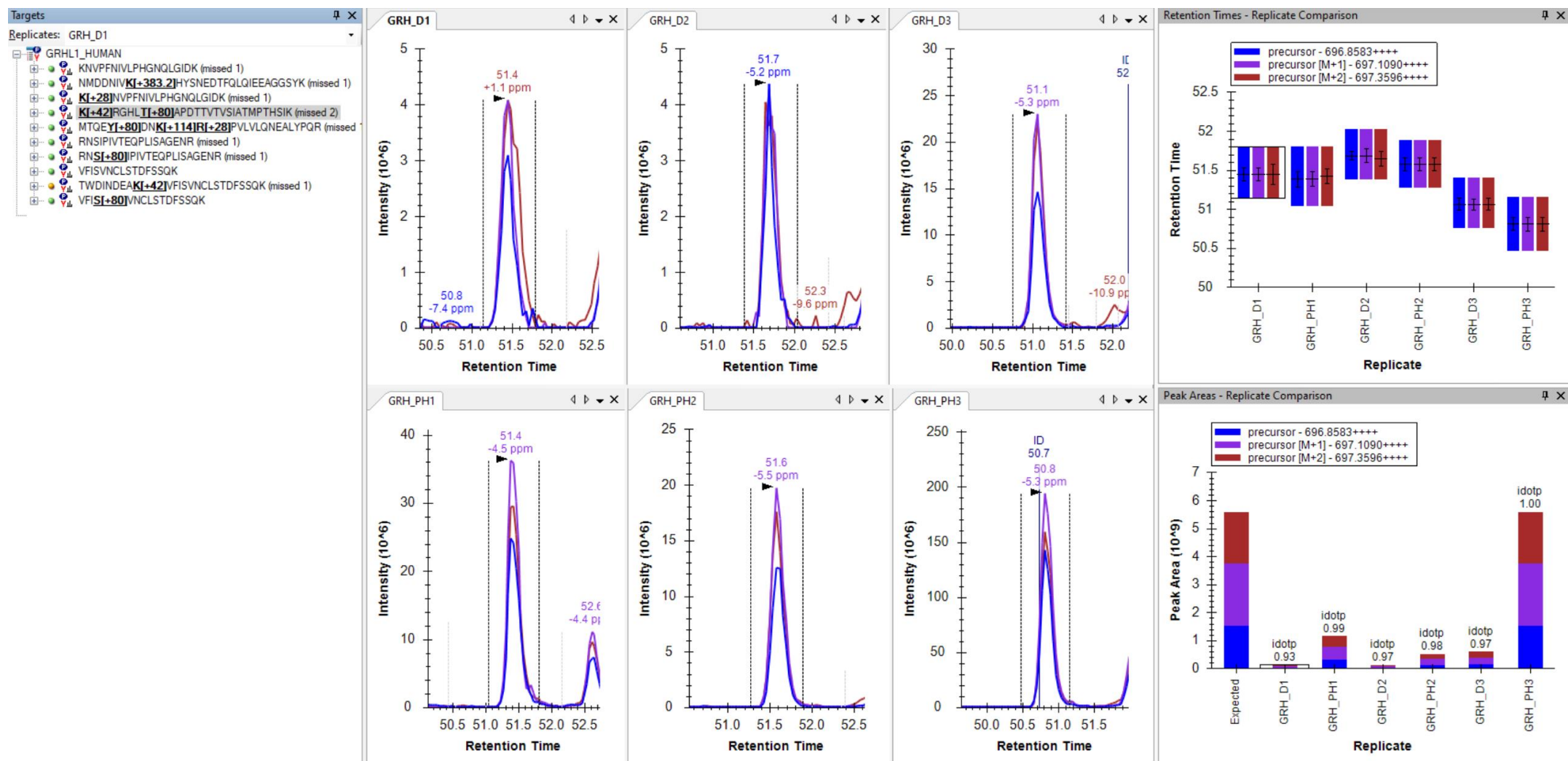


Supplementary Data 7. XICs of GRHL1 post-translational modifications associated with papaverine treatment.

T139 - K[+42]RGHLT[+80]APDTT^{TV}VS^{IAT}MPTHSIK

D1-3 = DMSO

PH1-3 = Papaverine

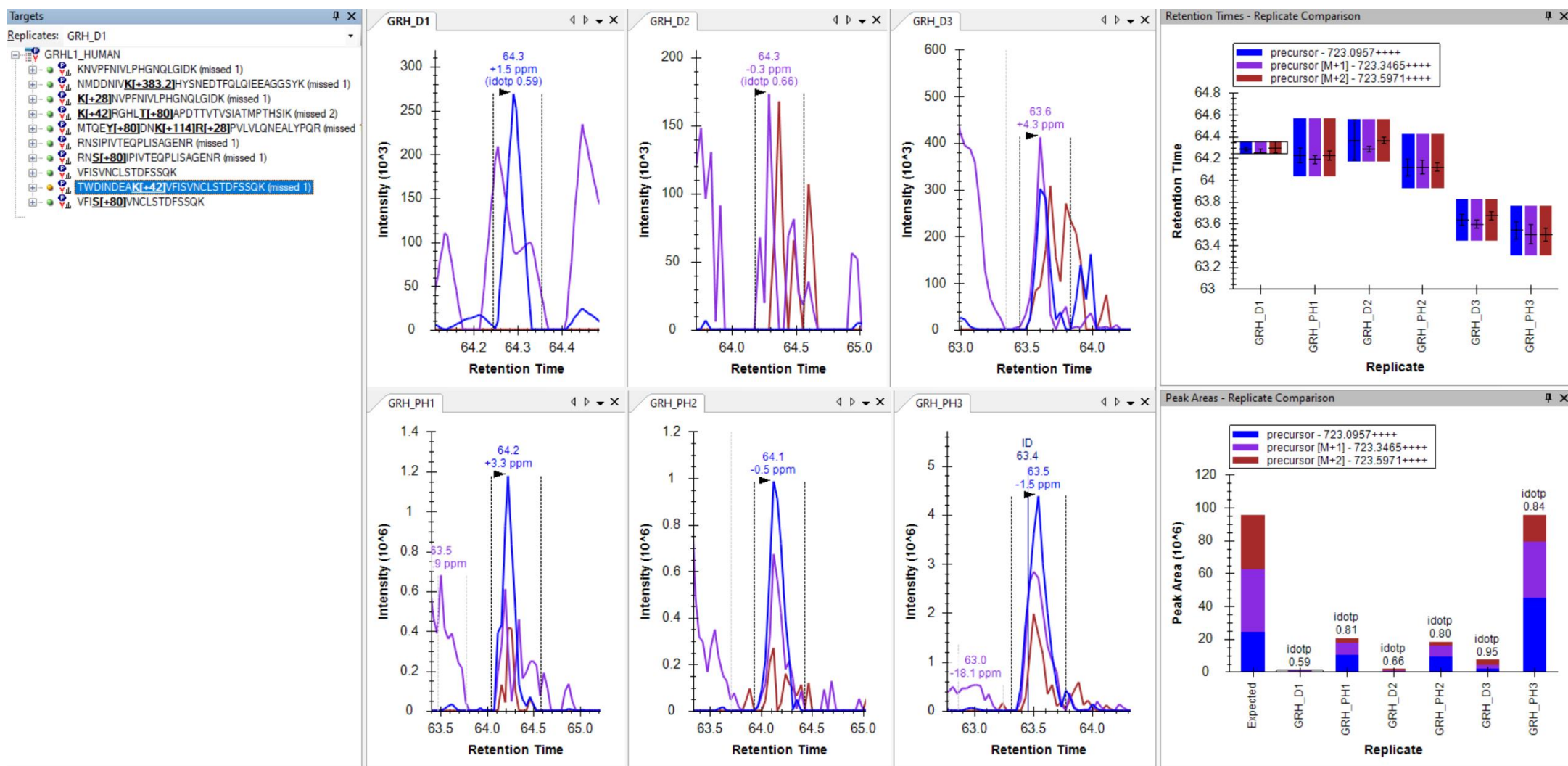


Supplementary Data 7. XICs of GRHL1 post-translational modifications associated with papaverine treatment.

K370 – TWDINDEAK[+42]VFISVNCLSTDFSSQK

D1-3 = DMSO

PH1-3 = Papaverine

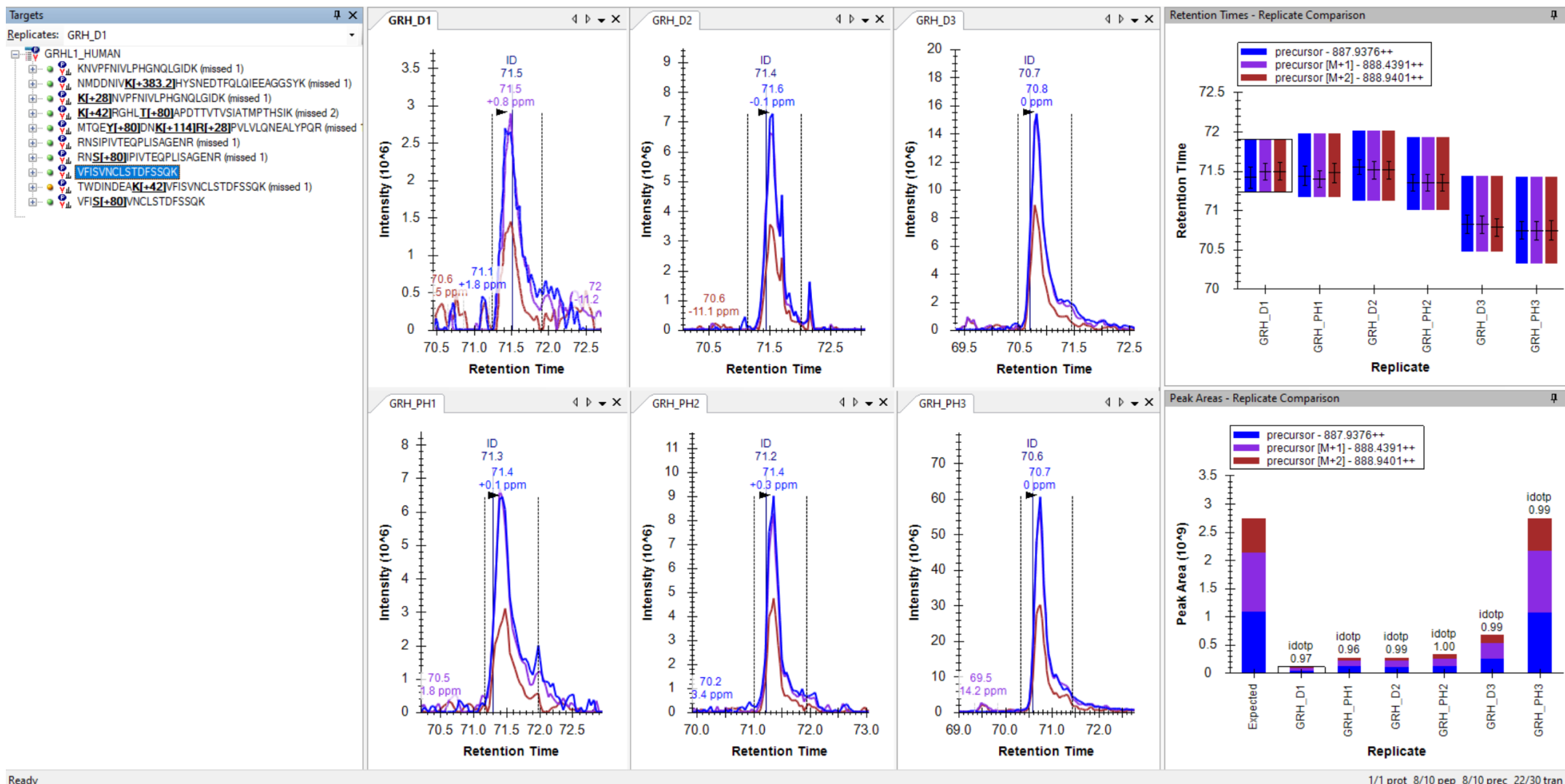


Supplementary Data 7. XICs of GRHL1 post-translational modifications associated with papaverine treatment.

S374 (unmodified) – VFISVNCLSTDFSSQK

D1-3 = DMSO

PH1-3 = Papaverine

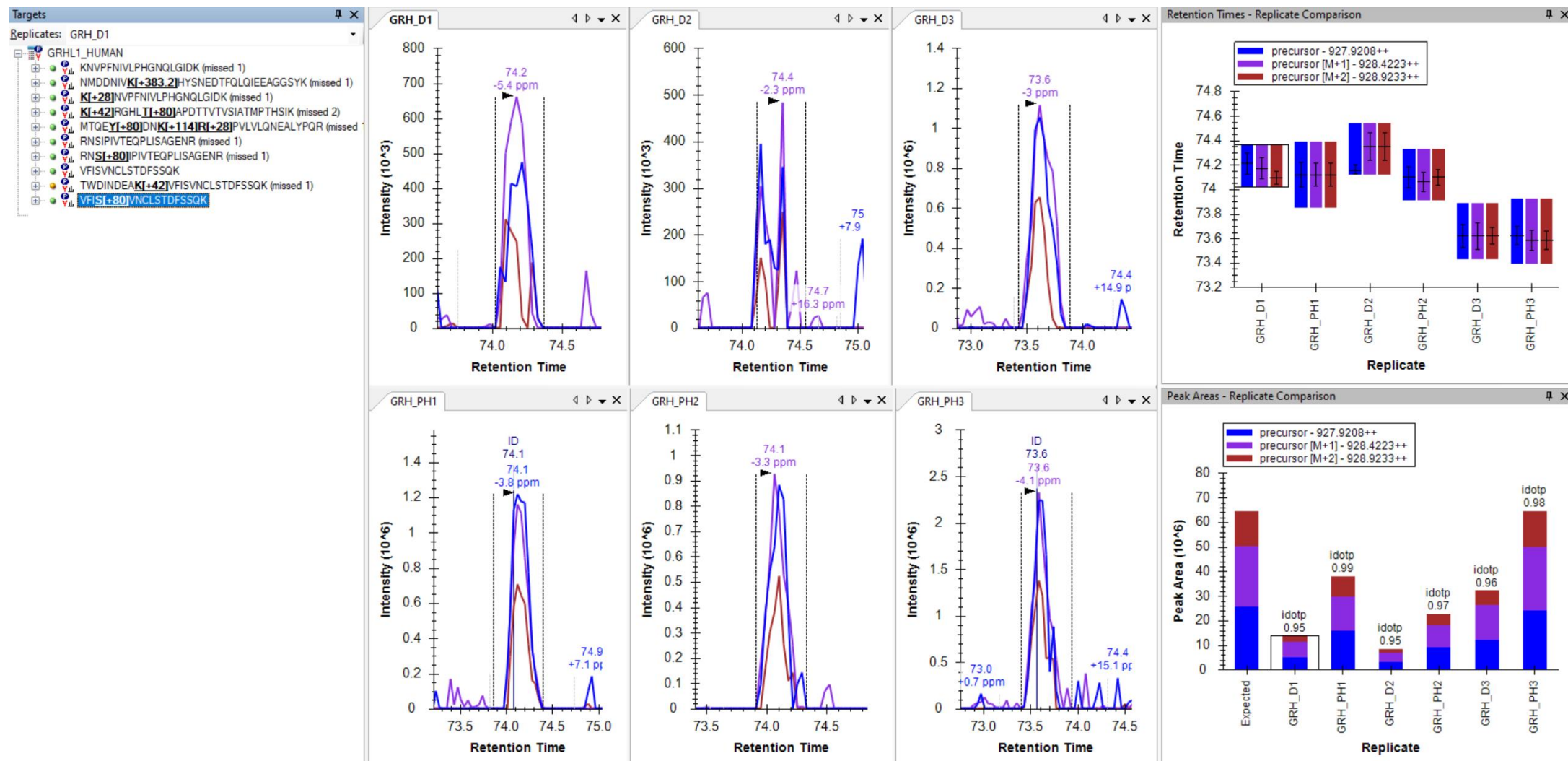


Supplementary Data 7. XICs of GRHL1 post-translational modifications associated with papaverine treatment.

S374 - VFIS[+80]VNCLSTDFSSQK

D1-3 = DMSO

PH1-3 = Papaverine



Supplementary Data 7. XICs of GRHL1 post-translational modifications associated with papaverine treatment.

K592 – NMDDNIVK[+383.2]HYSNEDTFQLQIEEAGGSYK

D1-3 = DMSO

PH1-3 = Papaverine

