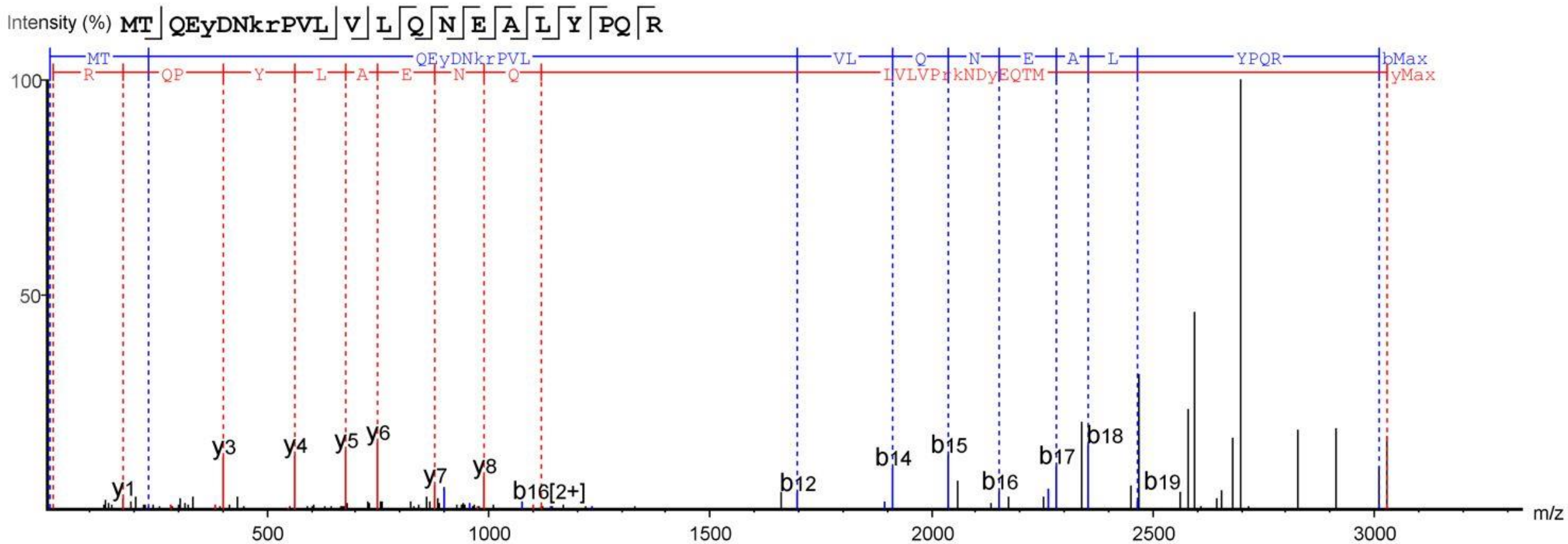


Supplementary Data 6. Annotated MS/MS spectra of GRHL1 post-translational modifications associated with papaverine treatment.

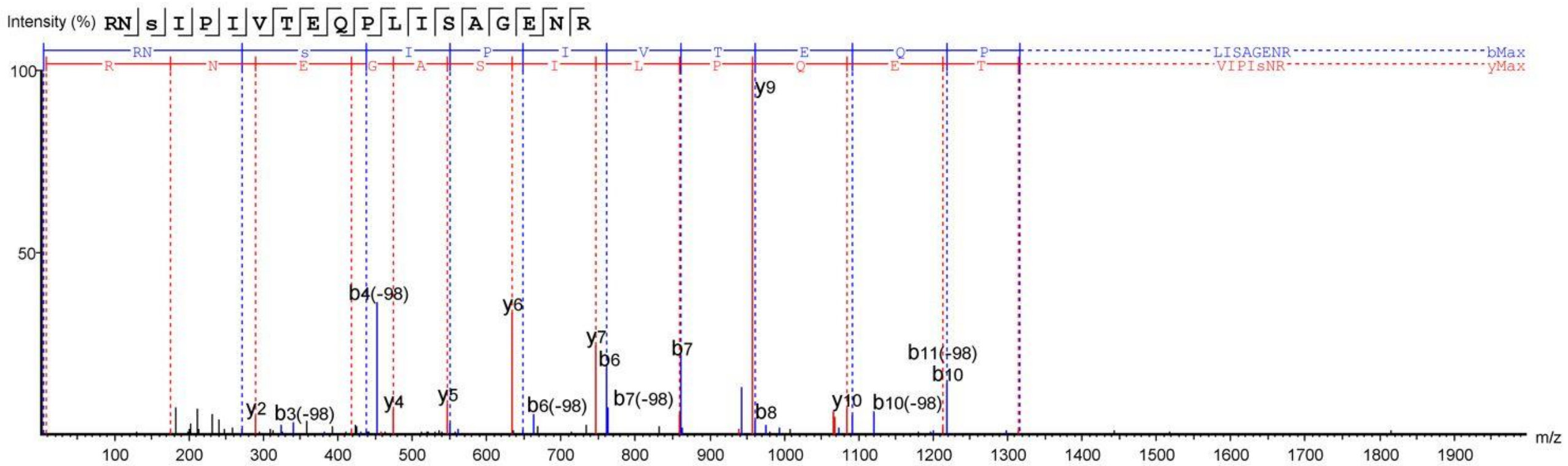
GRHL1 arginine 9 - dimethylation

MTQEY(+79.97)DNK(+114.04)R(+28.03)PVLVLQNEALY PQR.R



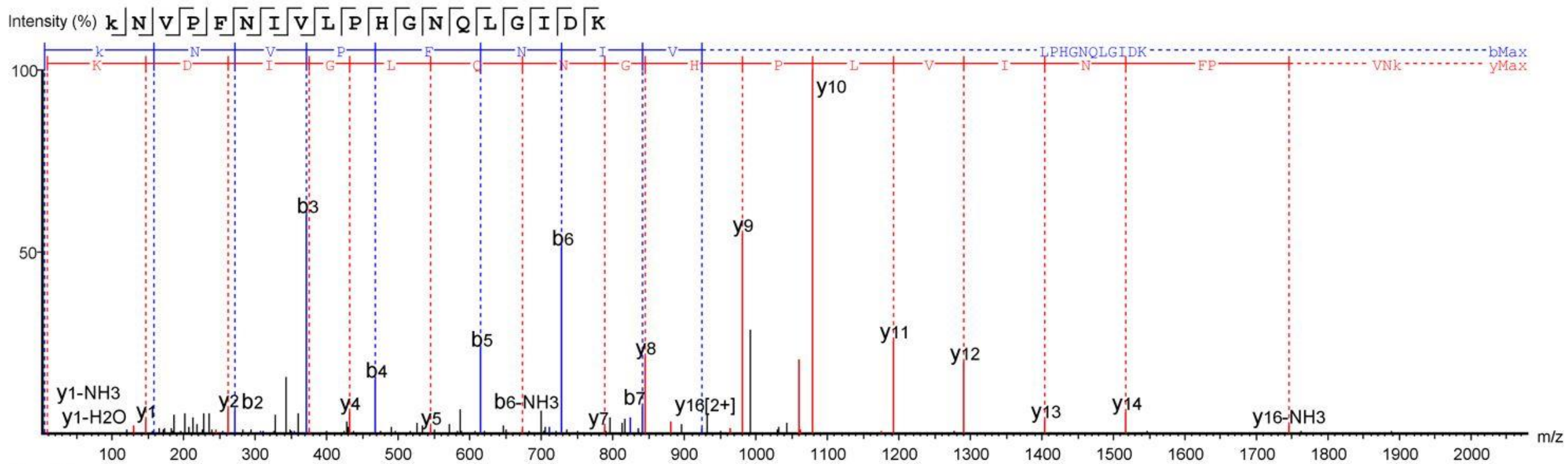
Supplementary Data 6. Annotated MS/MS spectra of GRHL1 post-translational modifications associated with papaverine treatment.

GRHL1 serine 95 - phosphorylation
K.RNS(+79.97)IPIVTEQPLISAGENR.V



Supplementary Data 6. Annotated MS/MS spectra of GRHL1 post-translational modifications associated with papaverine treatment.

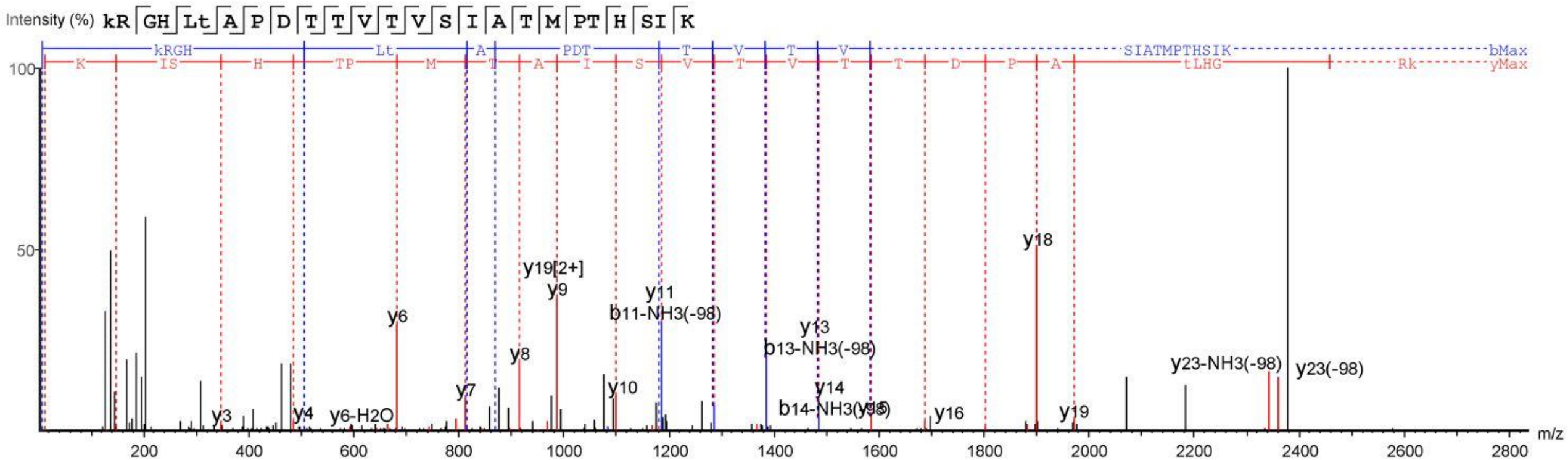
GRHL1 lysine 116 - dimethylation
L.K(+28.03)NVPFNIVLPHGNQLGIDK.R



Supplementary Data 6. Annotated MS/MS spectra of GRHL1 post-translational modifications associated with papaverine treatment.

GRHL1 threonine 139 - phosphorylation

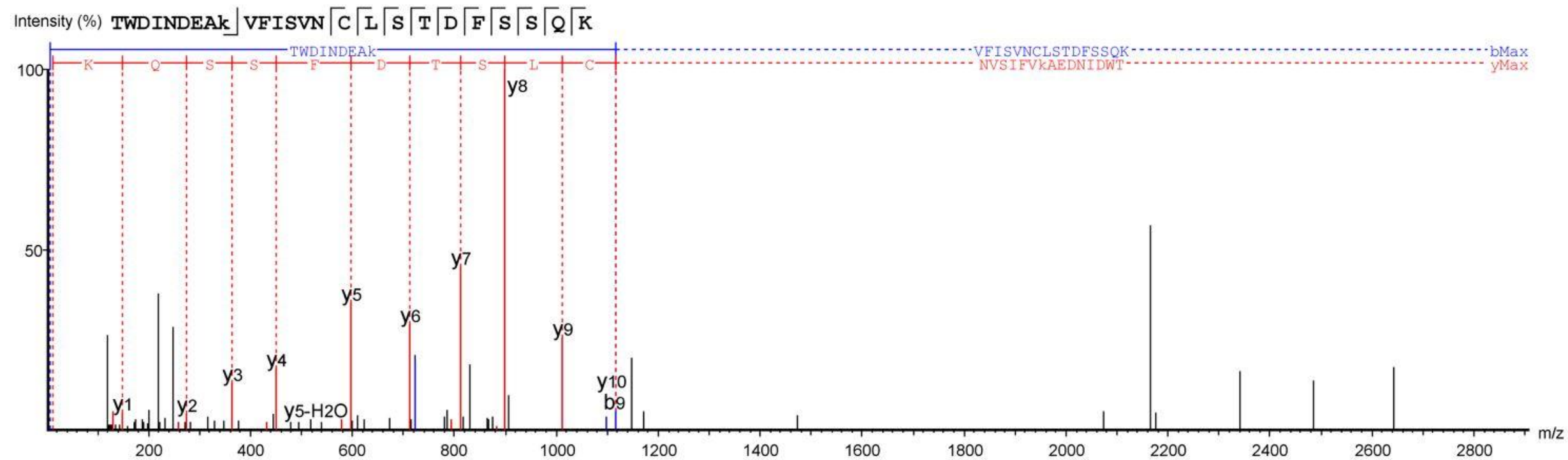
D.K(+42.01)RGHLT(+79.97)APDTTVTVSIATMPHTHSIK.T



Supplementary Data 6. Annotated MS/MS spectra of GRHL1 post-translational modifications associated with papaverine treatment.

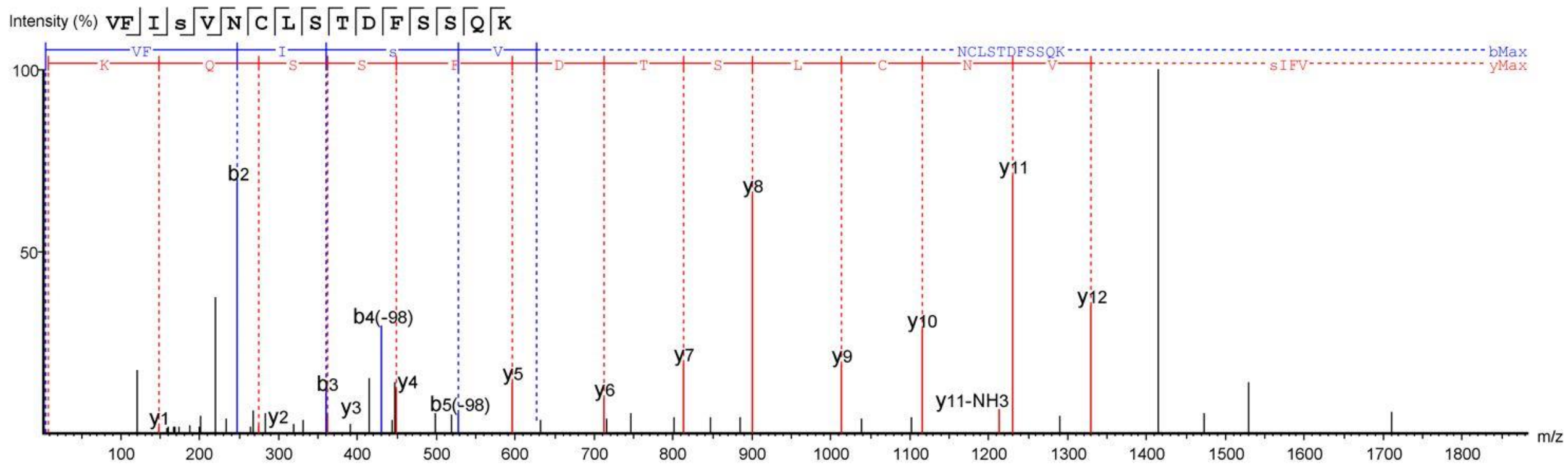
GRHL1 lysine 370 - acetylation

F.TWDINDEAK(+42.01)VFISVNCLSTDFSSQK.G



Supplementary Data 6. Annotated MS/MS spectra of GRHL1 post-translational modifications associated with papaverine treatment.

GRHL1 serine 374 - phosphorylation
K.VFIS(+79.97)VNCLSTDFSSQK.G



Supplementary Data 6. Annotated MS/MS spectra of GRHL1 post-translational modifications associated with papaverine treatment.

GRHL1 lysine 592 - ubiquitylation

V.NMDDNIVK(+383.23)HYSNEDTFQLQIEEAGGSYK.L

