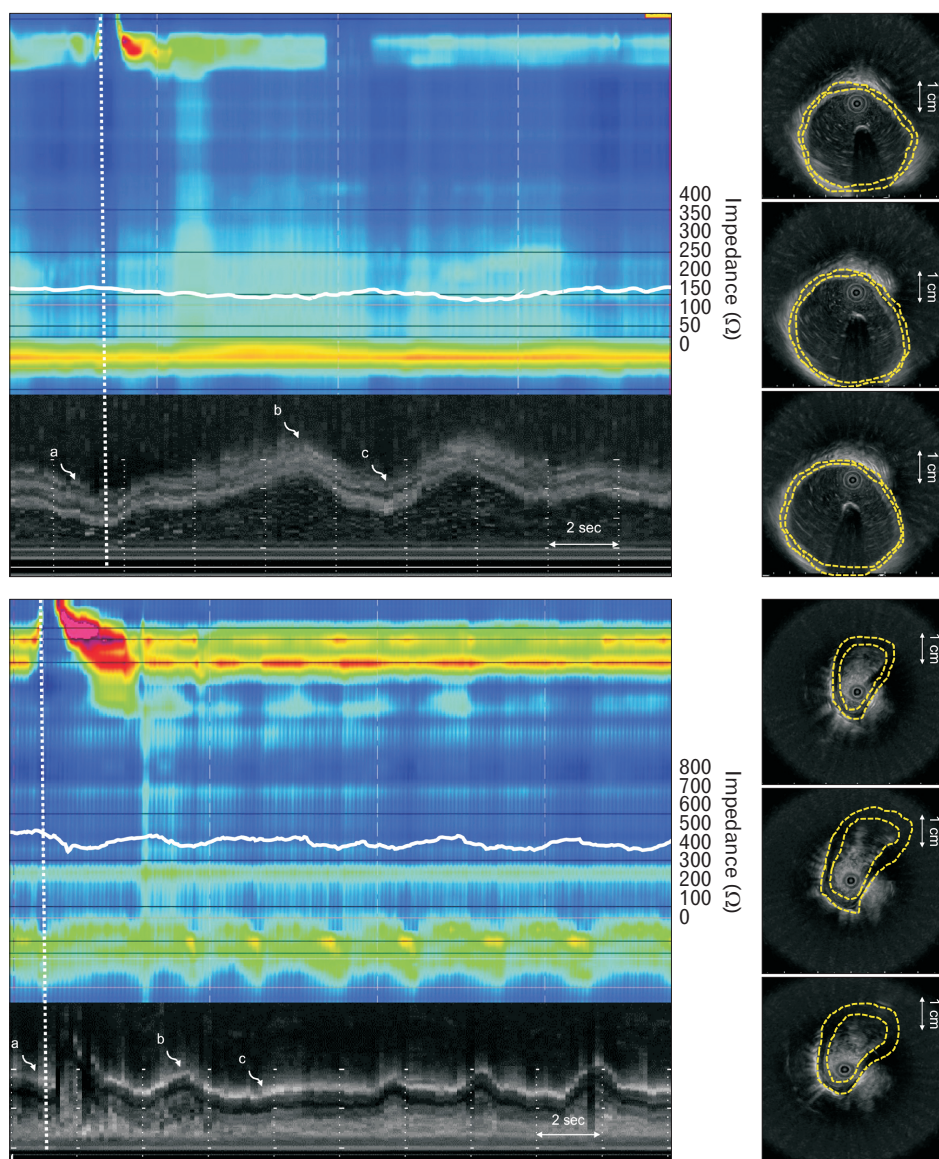


Supplementary Figure 1. Changes in cross-sectional movement in the distal esophageal body after peroral endoscopic myotomy in type II achalasia at baseline, peak distension, and contraction points (curved arrows a, b, and c). The muscle thickness increased, and the lumen cross-sectional area decreased. Additionally, panesophageal pressurization disappeared.



Supplementary Figure 2. Changes in cross-sectional movement in the distal esophageal body after peroral endoscopic myotomy in type I achalasia at baseline, peak distension, and contraction points (curved arrows a, b, and c). The muscle thickness increased, and the lumen cross-sectional area decreased; however, the esophageal body contractility during bolus transit was not improved.