

# **SUPPLEMENTAL MATERIAL**

**Table S1. Baseline characteristics of ACS patients (n=1732).**

Parameters	n = 1732 analyzed	n = 436 without biomarkers	p-value
<b>Age (years)</b>	n = 1732, 63.82 ± 12.27	n = 436, 63.41 ± 13.10	0.545
<b>Sex (female)</b>	n = 1732, 367 (21.2%)	n = 436, 96 (22.0%)	0.695
<b>Body weight (kg)</b>	n = 1713, 80.33 ± 15.20	n = 426, 80.21 ± 14.82	0.885
Body Mass Index (kg/m <sup>2</sup> )	n = 1711, 27.16 ± 4.35	n = 426, 27.00 ± 4.30	0.476
<b>Medical history</b>			
Diabetes mellitus	n = 1732, 313 (18.1%)	n = 436, 83 (19.0%)	0.628
Hypertension	n = 1732, 1018 (58.8%)	n = 436, 250 (57.3%)	0.587
Hypercholesterolemia	n = 1732, 1072 (61.9%)	n = 434, 276 (63.6%)	0.543
Current smoker	n = 1701, 674 (39.6%)	n = 432, 187 (43.3%)	0.170
Family history of CAD	n = 1711, 432 (25.2%)	n = 415, 115 (27.7%)	0.317
Chronic kidney disease *	n = 1728, 220 (12.7%)	n = 434, 54 (12.4%)	0.936
History of stroke or TIA	n = 1732, 64 (3.7%)	n = 436, 18 (4.1%)	0.674
Previous myocardial infarction	n = 1730, 266 (15.4%)	n = 436, 60 (13.8%)	0.454
Previous PCIs	n = 1731, 307 (17.7%)	n = 436, 74 (17.0%)	0.778
Previous CABG	n = 1732, 101 (5.8%)	n = 436, 21 (4.8%)	0.485
<b>Clinical presentation</b>			
Unstable angina	n = 1732, 69 (4.0%)	n = 436, 25 (5.7%)	0.115
NSTEMI	n = 1732, 747 (43.1%)	n = 436, 183 (42.0%)	0.705
STEMI	n = 1732, 916 (52.9%)	n = 436, 228 (52.3%)	0.830
<b>Index procedure</b>			
PCI	n = 1732, 1564 (90.3%)	n = 401, 371 (92.5%)	0.684
Any drug-eluting stent	n = 1633, 1229 (75.3%)	n = 401, 293 (73.1%)	0.369
Any bare-metal stent	n = 1633, 292 (17.9%)	n = 401, 84 (20.9%)	0.172
PTCA alone	n = 1633, 186 (11.4%)	n = 401, 39 (9.7%)	0.375
CABG	n = 1633, 65 (4.0%)	n = 401, 13 (3.2%)	0.563
<b>Peri-procedural medications</b>			
Unfractionated heparin	n = 1729, 1656 (95.8%)	n = 435, 415 (95.4%)	0.693
LMWH	n = 1732, 82 (4.7%)	n = 435, 34 (7.8%)	0.017
Bivalirudin	n = 1732, 78 (4.5%)	n = 435, 18 (4.1%)	0.796
Glycoprotein IIb/IIIa antagonists	n = 1732, 445 (25.7%)	n = 435, 140 (32.2%)	0.008
<b>GRACE risk score</b>			
<b>GRACE 1.0</b>			
In-hospital	n = 1732, 144.17 ± 32.97	n = 436, 143.97 ± 34.63	0.908
Long-term	n = 1732, 123.20 ± 26.18	n = 436, 122.85 ± 27.33	0.803
<b>GRACE 2.0 *</b>			
In-hospital death (%)	n = 1732, 6.39 ± 8.60	-	-
In-hospital death/MI (%)	n = 1732, 18.26 ± 8.70	-	-
1-year death (%)	n = 1732, 13.01 ± 13.42	-	-
1-year death/MI (%)	n = 1732, 18.29 ± 13.03	-	-

Depicted are counts (%) or means ± SDs.

\*Based on creatinine-estimated glomerular filtration rate clearance of <60 mL/min/1.73m<sup>2</sup>, using the Modification of Diet in Renal Disease (MDRD) formula.

CABG, coronary artery bypass graft; CAD, coronary artery disease; LMWH, low-molecular weight heparin; PCI, percutaneous coronary interventions; TIA, transient ischemic attack.

+ GRACE 2.0 returns percentage probability of observing a respective event for each patient.

**Table S2. Discharge and Medication (n=1732).**

	Count (%); sample size
<b>At Discharge</b>	
Aspirin	1693 (99.2%), n = 1706
Clopidogrel	796 (46.7%), n = 1706
Prasugrel	685 (40.2%), n = 1706
Any DAPT	1578 (92.5%), n = 1706
Statin	1673 (98.1%), n = 1705
ACE inhibitor	1307 (76.7%), n = 1705
Betablocker	1359 (79.8%), n = 1704
PPI	486 (28.5%), n = 1706
NSAID	26 (1.5%), n = 1706
Immunosuppressives	38 (2.2%), n = 1706
<b>At 30 days</b>	
Aspirin	1645 (98.1%), n = 1677
Clopidogrel	795 (47.4%), n = 1676
Prasugrel	651 (38.8%), n = 1676
Any DAPT	1517 (90.5%), n = 1677
Statin	1622 (96.7%), n = 1677
ACE inhibitor	1187 (70.8%), n = 1676
Betablocker	1399 (83.5%), n = 1676
PPI	460 (27.4%), n = 1677
NSAID	23 (1.4%), n = 1677
Immunosuppressives	31 (1.8%), n = 1677
<b>At 1 year</b>	
Aspirin	1534 (96.5%), n = 1590
Clopidogrel	678 (42.6%), n = 1590
Prasugrel	584 (36.7%), n = 1590
Any DAPT	1315 (82.7%), n = 1590
Statin	1484 (93.5%), n = 1588
ACE inhibitor	922 (58.1%), n = 1588
Betablocker	1245 (78.4%), n = 1588
PPI	441 (27.8%), n = 1588
NSAID	36 (2.3%), n = 1588
Immunosuppressives	31 (2.0%), n = 1588

**Table S3. Clinical outcomes (n=1732).**

<b>Parameters</b>	<b>n = 1732</b>
<b>At 30 days</b>	
Death	32 (1.8%)
Cardiac death	29 (1.7%)
Myocardial infarction	27 (1.6%)
Revascularization (any)	35 (2.0%)
Revascularization (clinically indicated)	32 (1.8%)
Cerebrovascular events (Stroke and TIA)	14 (0.8%)
Stroke (any)	12 (0.7%)
CVE (Ischemic stroke)	11 (0.6%)
CVE (Intracerebral hemorrhage)	0 (0.0%)
CVE (Unclear etiology)	1 (0.1%)
TIA	2 (0.1%)
Stent thrombosis (definite)	15 (0.9%)
All-cause death or MI	58 (3.3%)
<b>At 1 year</b>	
Death	72 (4.2%)
Cardiac death	57 (3.3%)
Myocardial infarction	64 (3.7%)
Revascularization	111 (6.4%)
Revascularization (clinically indicated)	104 (6.0%)
Cerebrovascular events (Stroke and TIA)	32 (1.8%)
Stroke (any)	26 (1.5%)
CVE (Ischemic stroke)	23 (1.3%)
CVE (Intracerebral hemorrhage)	2 (0.1%)
CVE (Unclear etiology)	1 (0.1%)
TIA	7 (0.4%)
Stent thrombosis (definite)	19 (1.1%)
All-cause death or MI	129 (7.4%)

**Table S4. Univariable Cox models for GRACE risk score (version 1.0 and 2.0), CCN1, hsTnT, NT-proBNP, and, hsCRP for 30-days and 1-year follow-up to predict all-cause mortality and all-cause mortality/myocardial infarction (n=1732).**

	Hazard ratio	p-value
<b>30-day all-cause mortality</b>		
In-hospital GRACE risk score 1.0 <sup>1</sup>	1.30 (1.20, 1.40)	<0.001
In-hospital GRACE risk score 2.0 <sup>2</sup>	4.24 (3.02, 5.95)	<0.001
CCN1 (ng/l)	2.63 (2.05, 3.38)	<0.001
hsTnT (µg/l)	1.91 (1.49, 2.44)	<0.001
NT-proBNP (ng/l)	1.83 (1.47, 2.28)	<0.001
hsCRP (mg/l)	1.44 (1.16, 1.78)	<0.001
<b>30-day all-cause mortality/MI</b>		
In-hospital GRACE risk score 1.0 <sup>1</sup>	1.20 (1.20, 1.30)	<0.001
In-hospital GRACE risk score 2.0 <sup>2</sup>	4.26 (2.42, 7.49)	<0.001
CCN1 (ng/l)	1.95 (1.56, 2.43)	<0.001
hsTnT (µg/l)	1.29 (1.10, 1.52)	0.002
NT-proBNP (ng/l)	1.43 (1.23, 1.68)	<0.001
hsCRP (mg/l)	1.31 (1.12, 1.54)	0.001
<b>1-year all-cause mortality</b>		
Long-term GRACE risk score 1.0 <sup>1</sup>	1.40 (1.30, 1.50)	<0.001
1-year GRACE risk score 2.0 <sup>2</sup>	4.29 (3.22, 5.71)	<0.001
CCN1 (ng/l)	1.98 (1.61, 2.43)	<0.001
hsTnT (µg/l)	1.42 (1.22, 1.65)	<0.001
NT-proBNP (ng/l)	1.86 (1.60, 2.15)	<0.001
hsCRP (mg/l)	1.50 (1.30, 1.73)	<0.001
<b>1-year all-cause mortality/MI</b>		
Long-term GRACE risk score 1.0 <sup>1</sup>	1.30 (1.20, 1.30)	<0.001
1-year GRACE risk score 2.0 <sup>2</sup>	3.48 (2.65, 4.57)	<0.001
CCN1 (ng/l)	1.57 (1.32, 1.87)	<0.001
hsTnT (µg/l)	1.18 (1.06, 1.31)	0.002
NT-proBNP (ng/l)	1.53 (1.37, 1.70)	<0.001
hsCRP (mg/l)	1.38 (1.24, 1.54)	<0.001

<sup>1</sup> We used continuous GRACE 1.0 scores, and HRs were reported per 10 score unit increase.

<sup>2</sup> For GRACE 2.0 scores, and the biomarkers, natural logarithm was used, and HRs were reported per one log-unit increase.

**Table S5. Results of the multivariable Cox models using bootstrapping for GRACE risk score (version 1.0 and 2.0), CCN1, hsTnT, NT-proBNP, and, hsCRP for 30-days and 1-year follow-up to predict all-cause mortality and all-cause mortality/myocardial infarction (n=1732).**

<b>30 days all-cause mortality</b>	<b>GRACE 1.0<sup>1</sup></b>		<b>GRACE 2.0<sup>2</sup></b>	
	<b>Hazard ratio</b>	<b>p-value</b>	<b>Hazard ratio</b>	<b>p-value</b>
In-hospital GRACE	1.20 (1.10, 1.30)	<0.001	2.59 (1.70, 3.95)	<0.001
CCN1 (ng/l)	1.77 (1.23, 2.55)	0.002	1.67 (1.11, 2.52)	0.014
hsTnT (µg/l)	1.46 (1.09, 1.95)	0.010	1.47 (1.11, 1.95)	0.008
NT-proBNP (ng/l)	1.11 (0.88, 1.41)	0.377	1.15 (0.90, 1.46)	0.264
hsCRP (mg/l)	1.05 (0.75, 1.48)	0.761	1.05 (0.76, 1.46)	0.767
<b>30 days all-cause mortality/MI</b>				
In-hospital GRACE	1.10 (1.00, 1.02)	<0.001	1.92 (0.95, 3.86)	0.067
CCN1 (ng/l)	1.65 (1.26, 2.15)	<0.001	1.73 (1.32, 2.27)	<0.001
hsTnT (µg/l)	1.04 (0.84, 1.30)	0.712	1.02 (0.83, 1.27)	0.834
NT-proBNP (ng/l)	1.14 (0.96, 1.36)	0.133	1.24 (1.06, 1.46)	0.009
hsCRP (mg/l)	1.16 (0.95, 1.43)	0.146	1.17 (0.96, 1.44)	0.122
<b>1-year all-cause mortality</b>				
Long-term GRACE	1.20 (1.10, 1.30)	<0.001	2.51 (1.74, 3.64)	<0.001
CCN1 (ng/l)	1.81 (1.41, 2.31)	<0.001	1.51 (1.13, 2.03)	0.006
hsTnT (µg/l)	1.03 (0.86, 1.25)	0.731	1.04 (0.86, 1.25)	0.685
NT-proBNP (ng/l)	1.25 (1.02, 1.54)	0.030	1.25 (1.03, 1.51)	0.021
hsCRP (mg/l)	1.23 (1.03, 1.48)	0.025	1.17 (0.98, 1.41)	0.088
<b>1-year all-cause mortality/MI</b>				
Long-term GRACE	1.10 (1.10, 1.20)	<0.001	1.98 (1.40, 2.80)	<0.001
CCN1 (ng/l)	1.58 (1.31, 1.91)	<0.001	1.43 (1.16, 1.76)	<0.001
hsTnT (µg/l)	0.92 (0.81, 1.05)	0.209	0.92 (0.80, 1.04)	0.183
NT-proBNP (ng/l)	1.24 (1.07, 1.43)	0.004	1.26 (1.10, 1.44)	<0.001
hsCRP (mg/l)	1.26 (1.11, 1.43)	<0.001	1.23 (1.08, 1.40)	0.002

<sup>1</sup> We used continuous GRACE 1.0 scores, and HRs were reported per 10 score unit increase.

<sup>2</sup> For GRACE 2.0 scores, and the biomarkers, natural logarithm was used, and HRs were reported per one log-unit increase.

**Table S6. Subgroup analysis NSTEMI: Accuracy of risk prediction for all-cause mortality (n= 816).**

30-day all-cause mortality	GRACE 1.0 <sup>1</sup>		GRACE 2.0 <sup>2</sup>	
	C-statistic	p-value	C-statistic	p-value
In-hospital GRACE	0.881		0.885	
GRACE + CCN1	0.902	<0.001	0.918	<0.001
GRACE + hsTnT	0.892	0.022	0.909	0.007
GRACE + NT-proBNP	0.888	0.589	0.893	0.707
GRACE + hsCRP	0.884	0.033	0.887	0.0432
GRACE + CCN1 + hsTnT	0.904	<0.001	0.917	<0.001
GRACE + CCN1 + hsTnT + NT-proBNP	0.904	<0.001	0.917	<0.001
GRACE + CCN1 + hsTnT + NT-proBNP + hsCRP	0.903	<0.001	0.914	<0.001
<b>1-year all-cause mortality</b>				
Long-term GRACE	0.798		0.826	
GRACE + CCN1	0.845	<0.001	0.847	0.0002
GRACE + hsTnT	0.807	0.148	0.826	0.118
GRACE + NT-proBNP	0.802	0.018	0.829	0.128
GRACE + hsCRP	0.799	0.360	0.827	0.686
GRACE + CCN1 + hsTnT	0.843	<0.001	0.843	<0.001
GRACE + CCN1 + hsTnT + NT-proBNP	0.849	<0.001	0.847	<0.001
GRACE + CCN1 + hsTnT + NT-proBNP + hsCRP	0.849	<0.001	0.848	<0.001

<sup>1</sup>We used continuous GRACE 1.0 scores.

<sup>2</sup> For GRACE 2.0 scores and the biomarkers, a natural logarithm was used.

**Table S7. Subgroup analysis NSTEMI: Integrated discrimination index (IDI) for all-cause mortality (n=816).**

	GRACE 1.0 <sup>1</sup>		GRACE 2.0 <sup>2</sup>	
	IDI value	p-value	IDI value	p-value
<b>30-day all-cause mortality</b>				
In-hospital GRACE risk score	Reference	-	Reference	-
GRACE + CCN1	0.160	0.106	0.160	0.089
GRACE + hsTnT	0.021	0.011	0.029	0.026
GRACE + NT-proBNP	0.001	0.135	0.002	0.376
GRACE + hsCRP	0.021	0.264	0.020	0.379
GRACE + CCN1 + hsTnT	0.168	0.108	0.167	0.113
GRACE + CCN1 + hsTnT + NT-proBNP	0.160	0.073	0.168	0.075
GRACE + CCN1 + hsTnT + NT-proBNP + hsCRP	0.122	0.132	0.131	0.118
<b>1-year all-cause mortality</b>				
Long-term GRACE risk score	Reference	-	Reference	-
GRACE + CCN1	0.067	0.027	0.050	0.053
GRACE + hsTnT	0.006	0.286	0.013	0.032
GRACE + NT-proBNP	0.023	0.035	0.009	0.283
GRACE + hsCRP	0.003	0.374	0.001	0.664
GRACE + CCN1 + hsTnT	0.065	0.026	0.048	0.067
GRACE + CCN1 + hsTnT + NT-proBNP	0.070	0.014	0.058	0.028
GRACE + CCN1 + hsTnT + NT-proBNP + hsCRP	0.069	0.014	0.057	0.031

<sup>1</sup> We used continuous GRACE 1.0 scores.

<sup>2</sup> For GRACE 2.0 scores and the biomarkers, a natural logarithmic transformation is used.



**Table S8. Subgroup analysis STEMI: Accuracy of risk prediction for all-cause mortality (n=916).**

30-day all-cause mortality	GRACE 1.0 <sup>1</sup>		GRACE2.0 <sup>2</sup>	
	C-statistic	p-value	C-statistic	p-value
In-hospital GRACE risk score	0.853	-	0.854	-
GRACE + CCN1	0.853	0.250	0.858	0.310
GRACE + hsTnT	0.869	<0.001	0.869	<0.001
GRACE + NT-proBNP	0.897	<0.001	0.894	<0.001
GRACE + hsCRP	0.889	<0.001	0.894	<0.001
GRACE + CCN1 + hsTnT	0.872	0.002	0.873	0.003
GRACE + CCN1 + hsTnT + NT-proBNP	0.897	<0.001	0.893	0.001
GRACE + CCN1 + hsTnT + NT-proBNP + hsCRP	0.905	<0.001	0.906	<0.001
<b>1-year all-cause mortality</b>				
Long-term GRACE risk score	0.755	-	0.805	
GRACE + CCN1	0.762	0.028	0.803	0.292
GRACE + hsTnT	0.772	0.002	0.809	0.015
GRACE + NT-proBNP	0.810	<0.001	0.830	0.002
GRACE + hsCRP	0.794	<0.001	0.837	<0.001
GRACE + CCN1 + hsTnT	0.781	<0.001	0.807	0.025
GRACE + CCN1 + hsTnT + NT-proBNP	0.820	<0.001	0.828	0.007
GRACE + CCN1 + hsTnT + NT-proBNP + hsCRP	0.828	<0.001	0.842	0.002

<sup>1</sup> We used continuous GRACE 1.0 scores.

<sup>2</sup> For GRACE 2.0 scores and the biomarkers, a natural logarithm was used.

**Table S9. Subgroup analysis STEMI: Integrated discrimination index (IDI) for all-cause mortality (n=916).**

30-day all-cause mortality	GRACE 1.0 <sup>1</sup>		GRACE 2.0 <sup>2</sup>	
	IDI value	p-value	IDI value	p-value
In-hospital GRACE risk score	Reference	-	Reference	-
GRACE + CCN1	0.005	0.322	0.005	0.336
GRACE + hsTnT	0.043	0.004	0.043	0.010
GRACE + NT-proBNP	0.039	0.038	0.040	0.061
GRACE + hsCRP	0.035	0.071	0.040	0.121
GRACE + CCN1 + hsTnT	0.006	0.373	0.006	0.386
GRACE + CCN1 + hsTnT + NT-proBNP	0.009	0.279	0.008	0.356
GRACE + CCN1 + hsTnT + NT-proBNP + hsCRP	0.016	0.159	0.014	0.240
<b>1-year all-cause mortality</b>				
Long-term GRACE risk score	Reference	-	Reference	-
GRACE + CCN1	0.015	0.014	0.006	0.094
GRACE + hsTnT	0.022	0.001	0.018	0.008
GRACE + NT-proBNP	0.037	<0.001	0.026	0.029
GRACE + hsCRP	0.040	0.002	0.030	0.044
GRACE + CCN1 + hsTnT	0.017	0.016	0.008	0.086
GRACE + CCN1 + hsTnT + NT-proBNP	0.016	0.035	0.009	0.096
GRACE + CCN1 + hsTnT + NT-proBNP + hsCRP	0.025	0.018	0.015	0.056

<sup>1</sup> We used continuous GRACE 1.0 scores.

<sup>2</sup> For GRACE 2.0 scores and the biomarkers, a natural logarithmic transformation is used.

**Table S10. Baseline characteristics for different categories of CCN1.**

Parameters	Total N = 1732	CCN1≤589.01 ng/l N = 1039	CCN1>589.01 ng/l N = 693
Age	n = 1732, 63.82 ± 12.27	n = 1039, 63.15 ± 12.00	n = 693, 64.82 ± 12.60
Sex (female)	n = 1732, 367 (21.2%)	n = 1039, 192 (18.5%)	n = 693, 175 (25.3%)
Weight	n = 1713, 80.33 ± 15.20	n = 1035, 81.79 ± 15.42	n = 678, 78.09 ± 14.58
BMI	n = 1711, 27.16 ± 4.35	n = 1034, 27.58 ± 4.43	n = 677, 26.53 ± 4.14
Diabetes mellitus (yes)	n = 1732, 313 (18.1%)	n = 1039, 204 (19.6%)	n = 693, 109 (15.7%)
Hypertension (yes)	n = 1732, 1018 (58.8%)	n = 1039, 633 (60.9%)	n = 693, 385 (55.6%)
Hypercholesterolemia	n = 1732, 1072 (61.9%)	n = 1039, 667 (64.2%)	n = 693, 405 (58.4%)
Current smoker (yes)	n = 1701, 674 (39.6%)	n = 1018, 419 (41.2%)	n = 683, 255 (37.3%)
Family history of CAD	n = 1711, 432 (25.2%)	n = 1031, 270 (26.2%)	n = 680, 162 (23.8%)
Renal failure (yes (<60 eGFR))	n = 1728, 220 (12.7%)	n = 1036, 110 (10.6%)	n = 692, 110 (15.9%)
History of stroke or TIA (yes)	n = 1732, 64 (3.7%)	n = 1039, 38 (3.7%)	n = 693, 26 (3.8%)
Previous MI (yes)	n = 1730, 266 (15.4%)	n = 1039, 186 (17.9%)	n = 691, 80 (11.6%)
Previous PCIs (yes)	n = 1731, 307 (17.7%)	n = 1039, 217 (20.9%)	n = 692, 90 (13.0%)
Previous CABG (yes)	n = 1732, 101 (5.8%)	n = 1039, 66 (6.4%)	n = 693, 35 (5.1%)
Acute coronary syndrome	n = 1732	n = 1039	n = 693
unstable angina	69 (4.0%)	62 (6.0%)	7 (1.0%)
non-ST-elevation MI	747 (43.1%)	604 (58.1%)	143 (20.6%)
ST-elevation MI	916 (52.9%)	373 (35.9%)	543 (78.4%)
Congestive heart failure	n = 1721	n = 1034	n = 687
Killip I	1481 (86.1%)	928 (89.7%)	553 (80.5%)
Killip II	168 (9.8%)	86 (8.3%)	82 (11.9%)
Killip III	32 (1.9%)	16 (1.5%)	16 (2.3%)
Killip IV	40 (2.3%)	4 (0.4%)	36 (5.2%)
Systolic blood pressure	n = 1723, 130.52 ± 23.42	n = 1035, 131.94 ± 22.54	n = 688, 128.39 ± 24.54
Heart rate	n = 1725, 75.96 ± 15.78	n = 1035, 75.08 ± 15.32	n = 690, 77.27 ± 16.38
Intervention performed (Yes)	n = 1732, 1564 (90.3%)	n = 1039, 916 (88.2%)	n = 693, 648 (93.5%)
Intervention - any PCI stenting (yes)	n = 1633, 1497 (91.7%)	n = 963, 876 (91.0%)	n = 670, 621 (92.7%)
Any Drug-eluting stent (yes)	n = 1633, 1229 (75.3%)	n = 963, 742 (77.1%)	n = 670, 487 (72.7%)
Any Bare-metal stent (yes)	n = 1633, 292 (17.9%)	n = 963, 148 (15.4%)	n = 670, 144 (21.5%)
Intervention - any PCI balloon (yes)	n = 1633, 186 (11.4%)	n = 963, 120 (12.5%)	n = 670, 66 (9.9%)
Intervention - any CABG (yes)	n = 1633, 65 (4.0%)	n = 963, 46 (4.8%)	n = 670, 19 (2.8%)
Unfract. Heparin (yes)	n = 1729, 1656 (95.8%)	n = 1037, 992 (95.7%)	n = 692, 664 (96.0%)
LMWH (yes)	n = 1732, 82 (4.7%)	n = 1039, 58 (5.6%)	n = 693, 24 (3.5%)
Bivalirudin (yes)	n = 1732, 78 (4.5%)	n = 1039, 44 (4.2%)	n = 693, 34 (4.9%)
GP IIb/IIIa (yes)	n = 1732, 445 (25.7%)	n = 1039, 213 (20.5%)	n = 693, 232 (33.5%)
PPI (yes)	n = 1721, 261 (15.2%)	n = 1032, 162 (15.7%)	n = 689, 99 (14.4%)
<b>GRACE risk scores</b>			
<b>GRACE 1.0</b>			
In-hospital	n = 1732, 144.17 ± 32.97	n = 1039, 136.96 ± 29.69	n = 693, 154.99 ± 34.66
Long-term	n = 1732, 123.20 ± 26.18	n = 1039, 122.11 ± 25.93	n = 693, 124.85 ± 26.49
<b>GRACE 2.0</b>			
In-hospital death (%)	n = 1732, 6.39 ± 8.60	n = 1039, 4.48 ± 4.91	n = 693, 9.25 ± 11.63
In-hospital death/MI (%)	n = 1732, 18.26 ± 8.70	n = 1039, 15.41 ± 6.60	n = 693, 22.53 ± 9.68
1-year death (%)	n = 1732, 13.01 ± 13.42	n = 1039, 10.41 ± 9.69	n = 693, 16.92 ± 16.86
1-year death/MI (%)	n = 1732, 18.29 ± 13.03	n = 1039, 15.57 ± 9.74	n = 693, 22.35 ± 15.97
<b>Concentration of biomarkers</b>			
<b>Mean ± SD</b>			
CCN1 (ng/l)	n = 1732, 992.06 ± 3803.91	n = 1039, 362.65 ± 113.41	n = 693, 1935.72 ± 5889.76
hsTnT (µg/l)	n = 1732, 0.65 ± 1.29	n = 1039, 0.63 ± 1.14	n = 693, 0.67 ± 1.48
NT-proBNP (ng/l)	n = 1732, 1507.42 ± 3834.9	n = 1039, 1379.80 ± 2883.91	n = 693, 1698.76 ± 4924.52
hsCRP (mg/L)	n = 1732, 10.71 ± 24.16	n = 1039, 13.02 ± 27.50	n = 693, 7.24 ± 17.47
<b>Median (IQR)</b>			
CCN1 (ng/l)	n = 1732, 488.09 (334.81 to 866.78)	n = 1039, 360.05 (279.11 to 443.06)	n = 693, 1055.75 (751.61 to 1772.03)
hsTnT (µg/l)	n = 1732, 0.20 (0.06 to 0.70)	n = 1039, 0.22 (0.06 to 0.76)	n = 693, 0.19 (0.06 to 0.60)
NT-proBNP (ng/l)	n = 1732, 385.5 (124 to 1320)	n = 1039, 450 (152 to 1409)	n = 693, 270 (88 to 1163)
hsCRP (mg/L)	n = 1732, 2.7 (1.1 to 8.0)	n = 1039, 3.3 (1.3 to 9.5)	n = 693, 2.3 (1 to 5.6)

Figure S1a. Kaplan-Meier curve for 30-day mortality for different categories of CCN1.

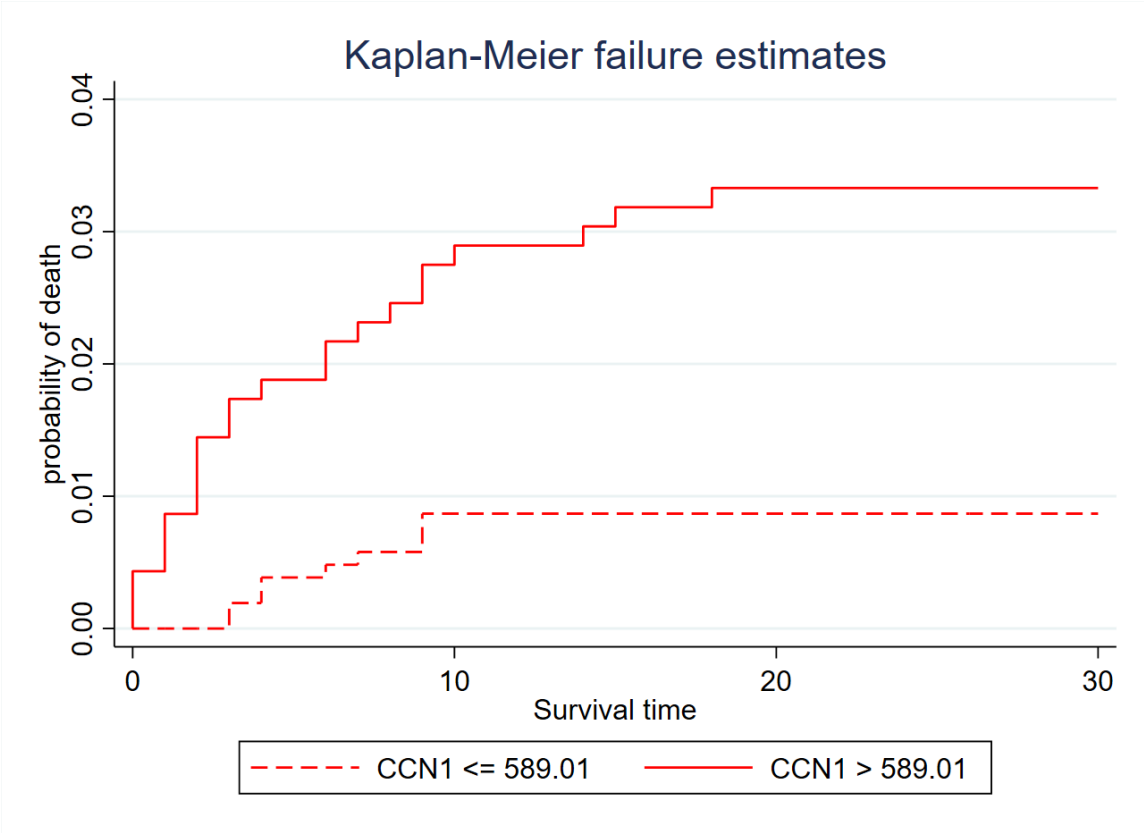


Figure S1b. Kaplan-Meier curve for 1-year mortality for different categories of CCN1.

