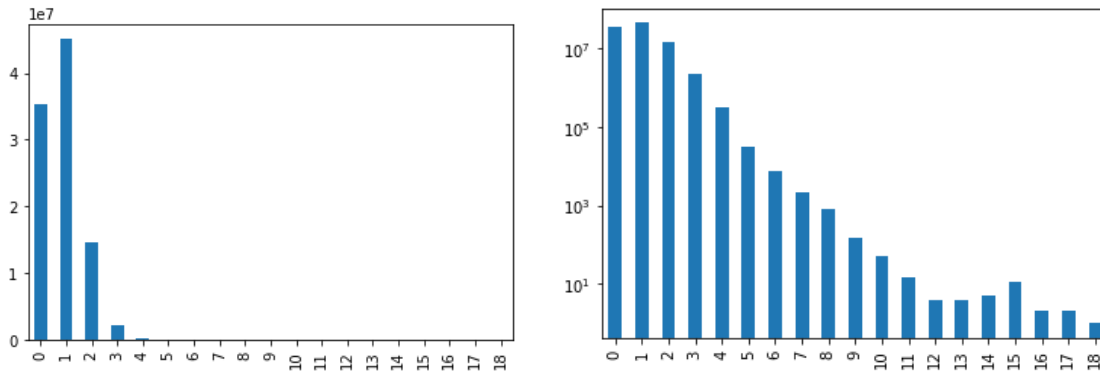


Categorizing tweets with multiple URLs

Several tweets contained multiple URLs



Distribution of URLs per tweet for original tweets in the COVID-19 Twitter dataset. Data are shown using linear (left) and logarithmic (right) scales.

These tweets were categorized in the following order of priority:

1. Not credible
2. Less Credible
3. Government Website
4. Academic
5. Other More Credible