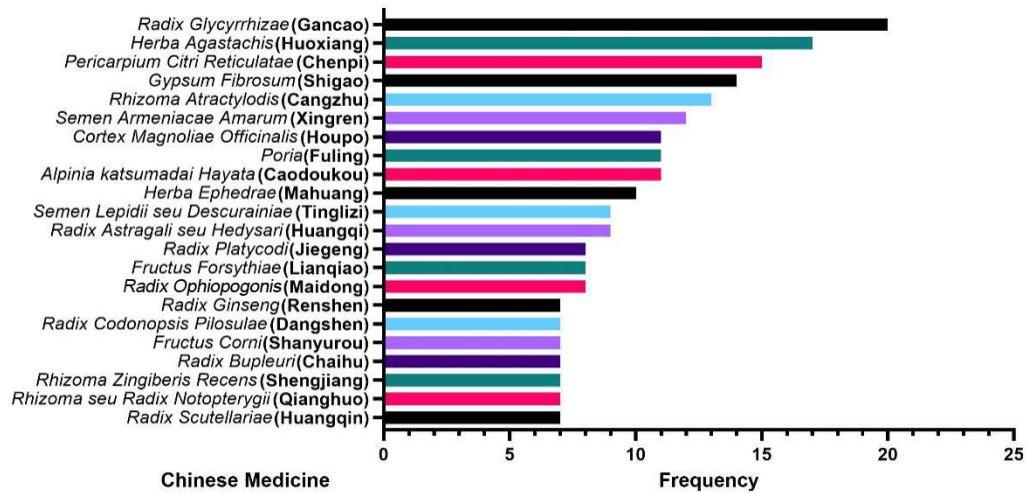


Appendix 1. Frequency of CM in North China (Top 15)



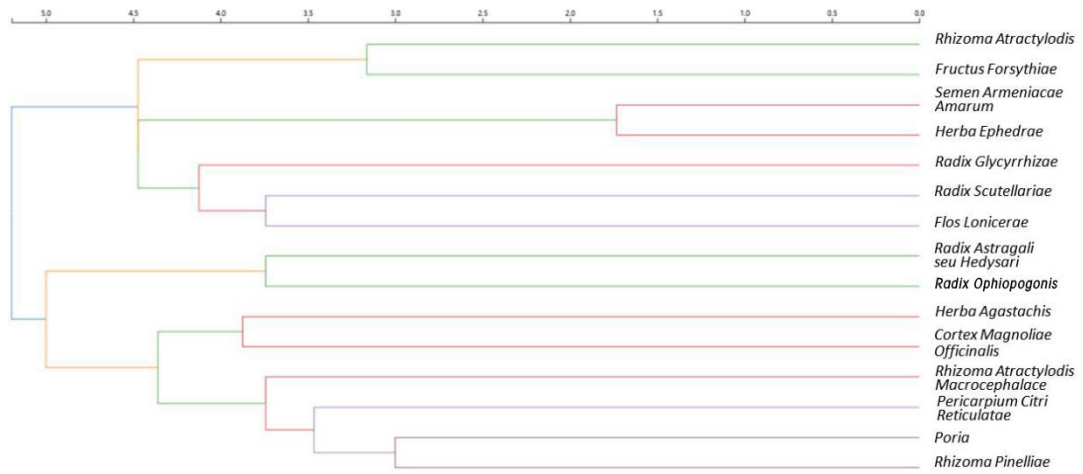
Appendix 2. Frequency of CM in East China (Top 15)

Appendix 3. Compatibility of CM for the Treatment of COVID-19 in North China

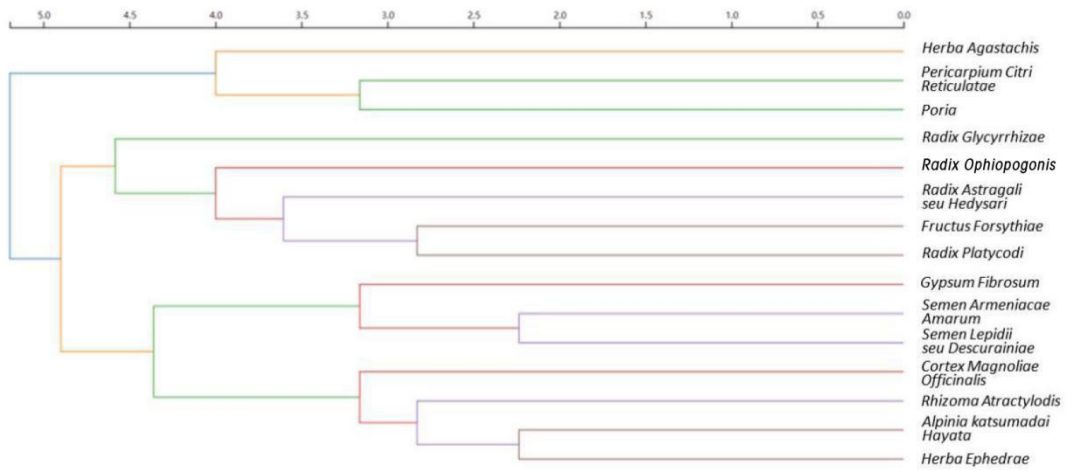
No.	CM	Co-occurrence frequency	Confidence	Support
1	<i>Semen armeniacae amarum-Herba ephedrae</i> (Xingren-Mahuang)	15	0.94	0.28
2	<i>Herba ephedrae-Semen armeniacae amarum</i> (Mahuang-Xingren)	15	0.94	0.28
3	<i>Gypsum fibrosum-Herba ephedrae</i> (Shigao-Mahuang)	10	1	0.19
4	<i>Rhizoma pinelliae-Poria</i> (Banxia-Fuling)	9	0.75	0.17
5	<i>Gypsum fibrosum-Semen armeniacae amarum</i> (Shigao-Xingren)	9	0.9	0.17
6	<i>Semen Coicis-Semen armeniacae amarum</i> (Yiyiren-Xingren)	7	0.88	0.13
7	<i>Radix Bupleuri-Rhizoma pinelliae</i> (Chaihu-Banxia)	6	0.75	0.11
8	<i>Radix Bupleuri-Radix scutellariae</i> (Chaihu-Huangqin)	6	0.75	0.11
9	<i>Semen lepidii seu descurainiae-Gypsum fibrosum</i> (Tinglizi-Shigao)	6	0.86	0.11
10	<i>Semen lepidii seu descurainiae-Herba ephedrae</i> (Tinglizi-Mahuang)	6	0.86	0.11
11	<i>Semen coicis-Herba ephedrae</i> (Yiyiren-Mahuang)	6	0.75	0.11

Appendix 4. Compatibility of CM for the Prevention of COVID-19 in East China

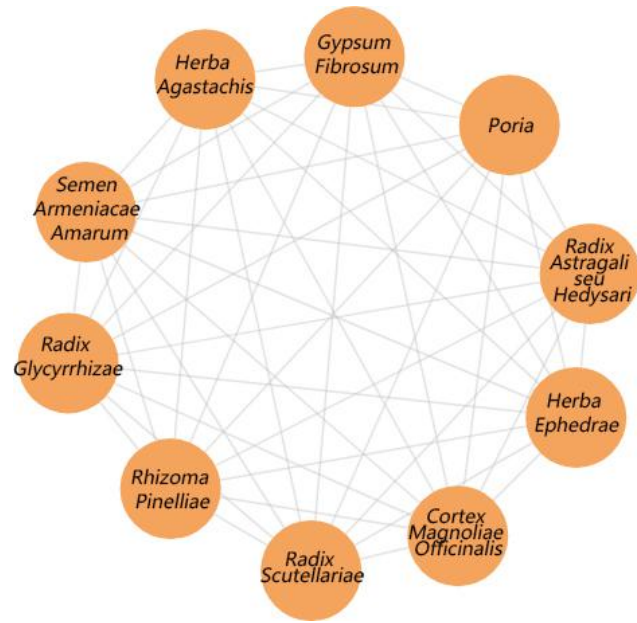
No.	CM	Co-occurrence frequency	Confidence	Support
1	<i>Alpinia katsumadai</i> Hayata-Cortex <i>magnoliae officinalis</i> (Caodoukou-Houpo)	8	0.73	0.16
2	<i>Alpinia katsumadai</i> hayata-Rhizoma <i>atractylodis</i> (Caodoukou-Cangzhu)	8	0.73	0.16
3	<i>Alpinia katsumadai</i> hayata-Herba <i>ephedrae</i> (Caodoukou-Mahuang)	8	0.73	0.16
4	<i>Poria-Pericarpium citri reticulatae</i> (Fuling-Chenpi)	8	0.73	0.16
5	<i>Cortex magnoliae officinalis-Alpinia</i> <i>katsumadai</i> Hayata (Houpo-Caodoukou)	8	0.73	0.16
6	<i>Cortex magnoliae officinalis-Herba</i> <i>agastachis</i> (Houpo-Huoxiang)	8	0.73	0.16
7	<i>Herba ephedrae-Rhizoma atractylodis</i> (Mahuang-Cangzhu)	8	0.8	0.16
8	<i>Herba ephedrae-Alpinia katsumadai hayata</i> (Mahuang-Caodoukou)	8	0.8	0.16
9	<i>Semen lepidii seu descurainiae-Semen</i> <i>armeniaca amarum</i> (Tinglizi-Xingren)	8	0.89	0.16
10	<i>Semen lepidii seu descurainiae-Gypsum</i> <i>fibrosum</i> (Tinglizi-Shigao)	8	0.89	0.16



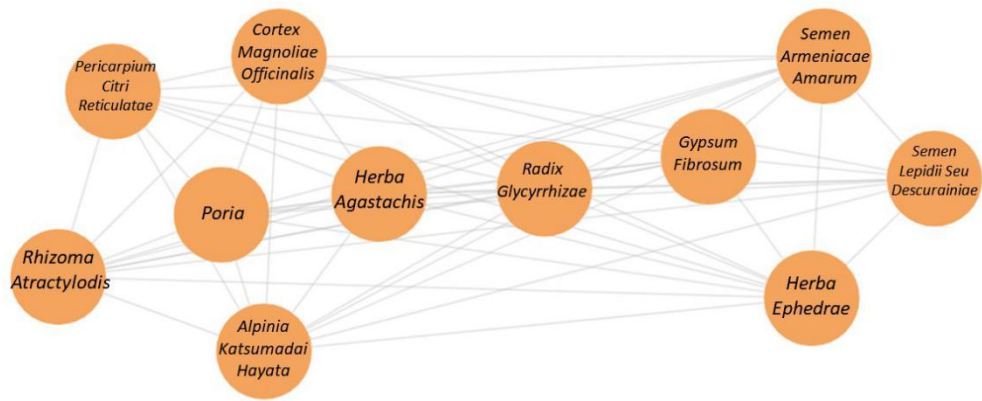
Appendix 5. Clustering Analysis of CM in North China (Top 15)



Appendix 6. Clustering Analysis of CM in East China (Top 15)



Appendix 7. Core Combination Network of CM in North China



Appendix 8. Core Combination Network of CM in East China