

Supplementary information

HELQ is a dual-function DSB repair enzyme modulated by RPA and RAD51

In the format provided by the authors and unedited

Supplementary Information

HELQ is a dual function DSB repair enzyme modulated by RPA and RAD51

Roopesh Anand^{1,5}, Erika Buechelmaier^{2,5}, Ondrej Belan¹, Matthew Newton¹,
Aleksandra Vancevska¹, Artur Kaczmarczyk^{3,4}, Tohru Takaki¹, David S. Rueda^{3,4,6},
Simon N. Powell^{2,6}, Simon J. Boulton^{1,6}

Contents:

SI Figure 1

- p1: Legend
- p2: source data for Fig 1a, c and f
- p3: source data for Fig 2a, c, e and g
- p4: source data for Fig3i
- p5: source data for EDFig 1a, b, c, d, f, g, h, i, j and l
- p6: source data for EDFig 2a, b, c, d, e, f, h, i, j and k
- p7: source data for EDFig 2m and o
- p8: source data for EDFig 3a, b, d, f and h
- p9: source data for EDFig 4h
- p10: source data for EDFig 5a, c, e, g, h, j and l
- p11: source data for EDFig 6a, b, and q
- p12: source data for EDFig 7a and b
- p13: source data for EDFig 8a and d
- p14: source data for EDFig 9a, b and f

SI Figure 2

- p15: legend
- p16: FACs gating strategy for U2OS-DR
- p17: FACs gating strategy for U2OS-SA and U2OS-SCR
- p18: FACs gating strategy for EJ-DR

SI Figure 1

Legend:

Source data for Figures 1-4 and EDFigure 1-8.

This shows images of the uncropped gels and the cropped section used for the indicated main or ED figures. Molecular weight markers are not included as these are DNA gels.

Source data for EDFigure 9.

This shows scanned in uncropped western blots and the cropped section used for the indicated ED figures. The antibody used/protein detected is shown and the molecular weight markers are included.

Fig. 1a

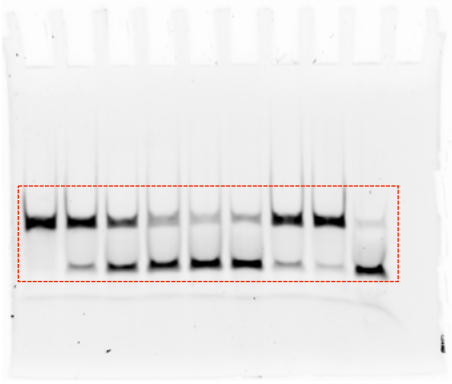


Fig. 1c

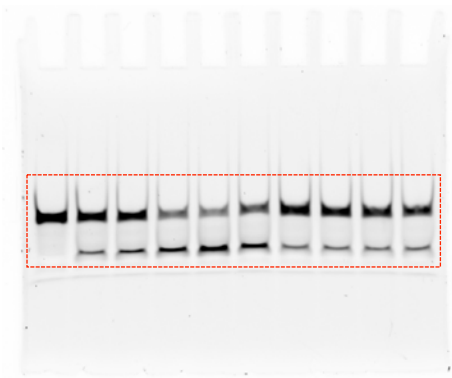
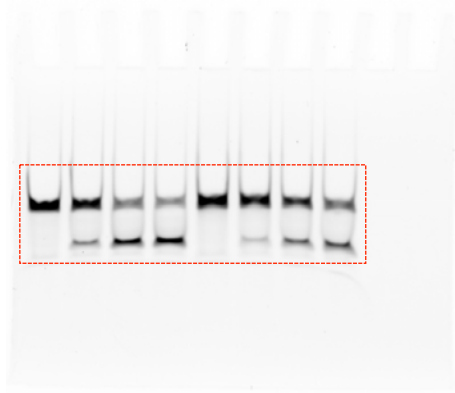


Fig. 1f



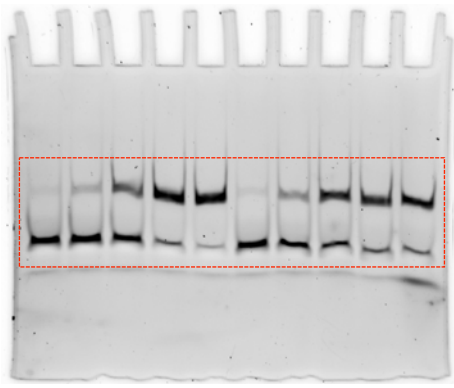


Fig. 2a

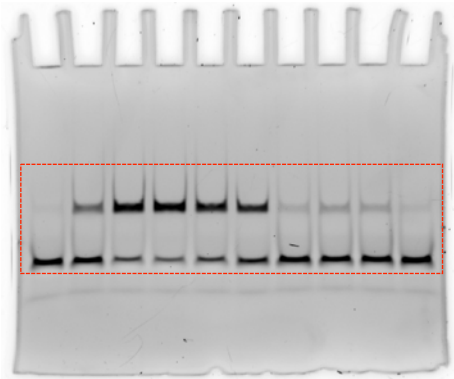


Fig. 2c

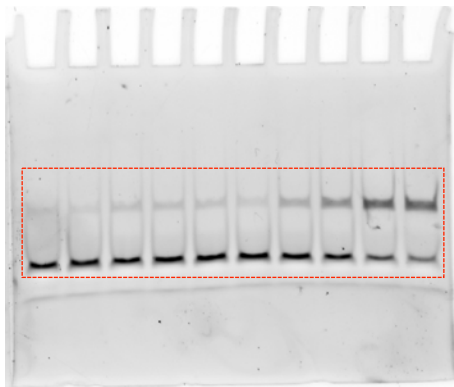


Fig. 2e

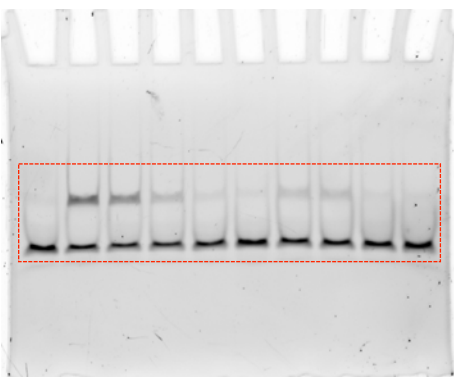
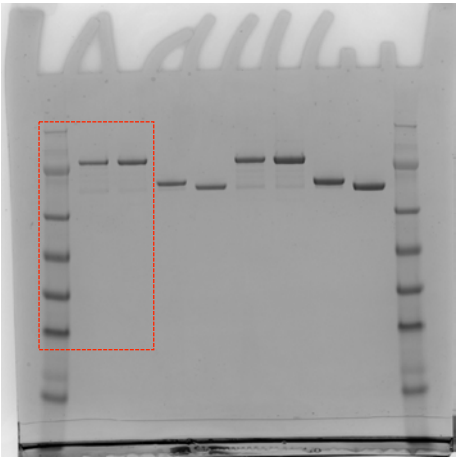


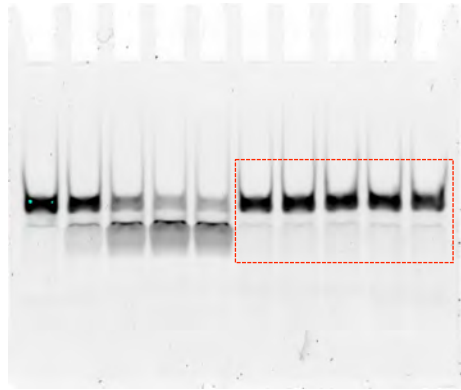
Fig. 2g



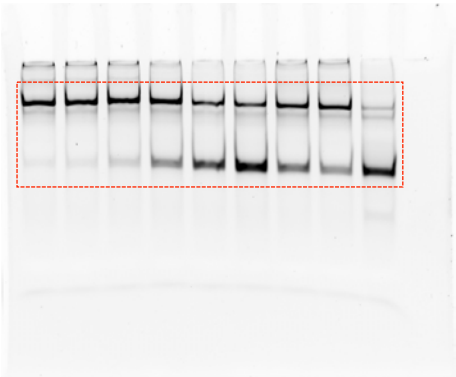
Fig. 3 i



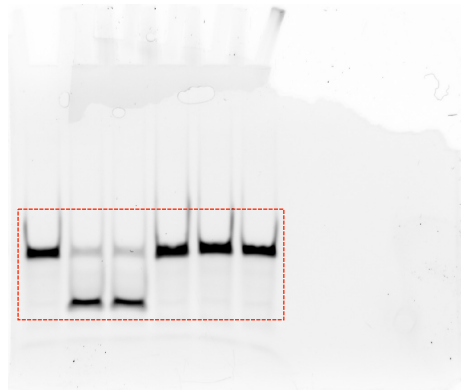
ED Fig. 1a



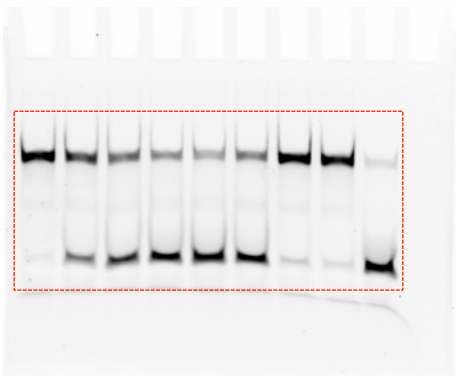
ED Fig. 1g



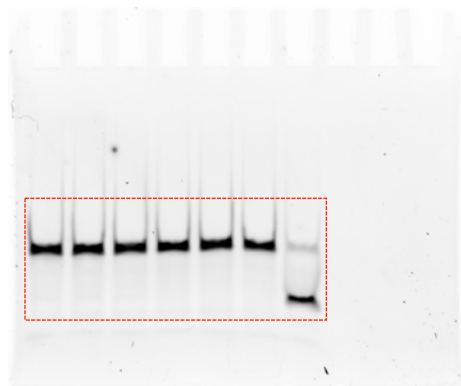
ED Fig. 1b



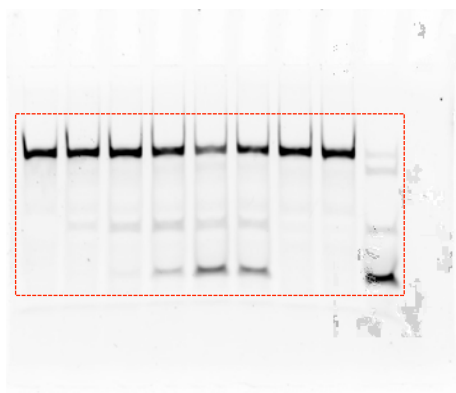
ED Fig. 1h



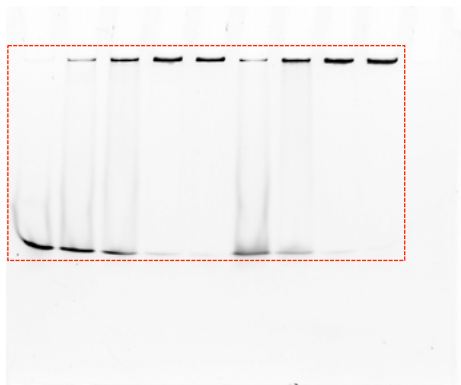
ED Fig. 1c



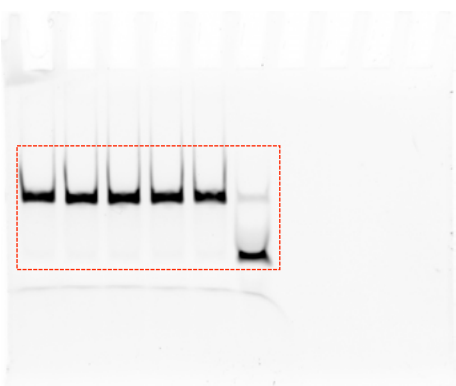
ED Fig. 1i



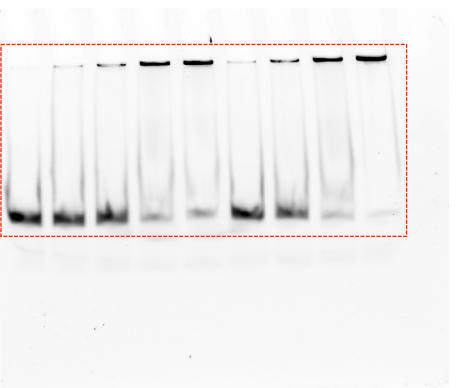
ED Fig. 1d



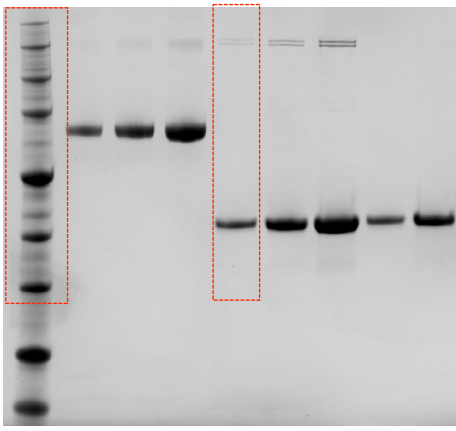
ED Fig. 1j



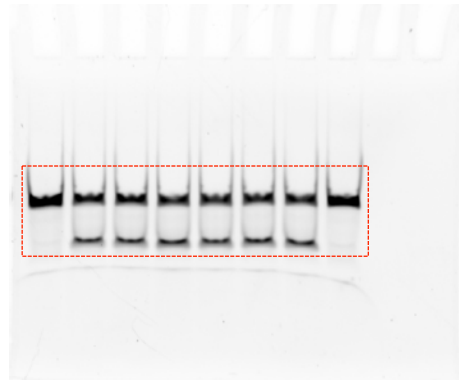
ED Fig. 1f



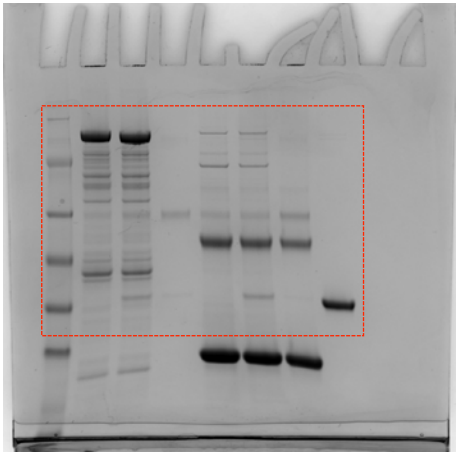
ED Fig. 1l



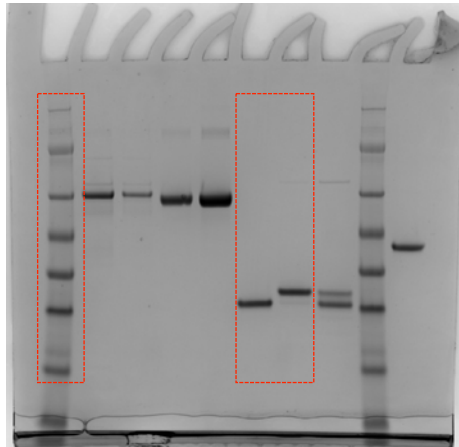
ED Fig. 2a



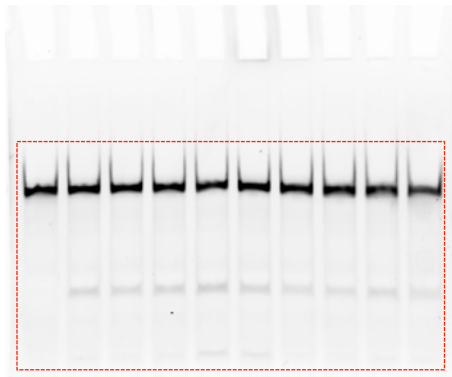
ED Fig. 2f



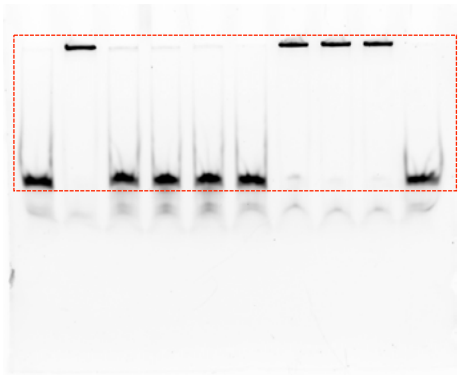
ED Fig. 2b



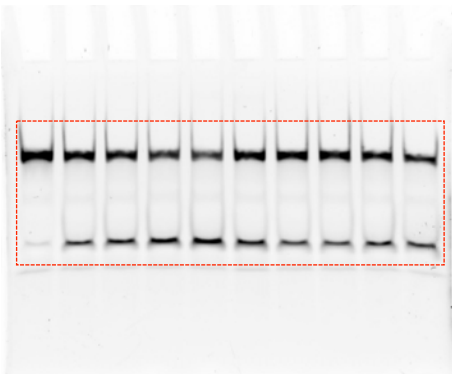
ED Fig. 2h



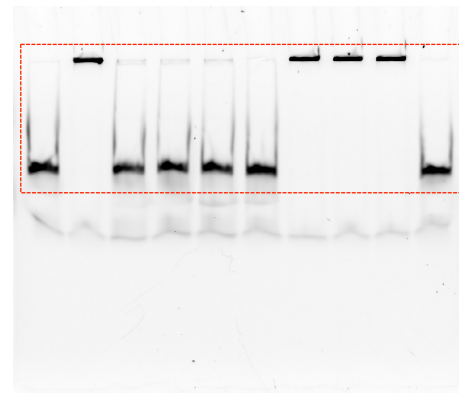
ED Fig. 2c



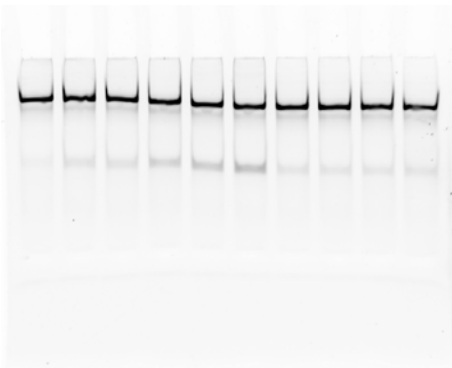
ED Fig. 2i



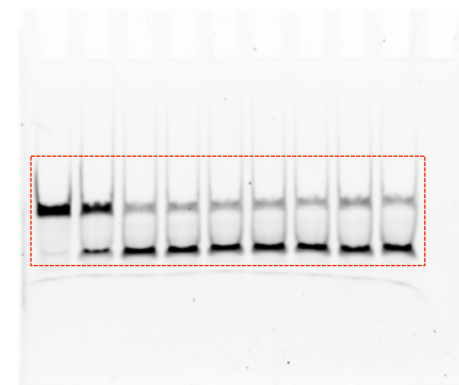
ED Fig. 2d



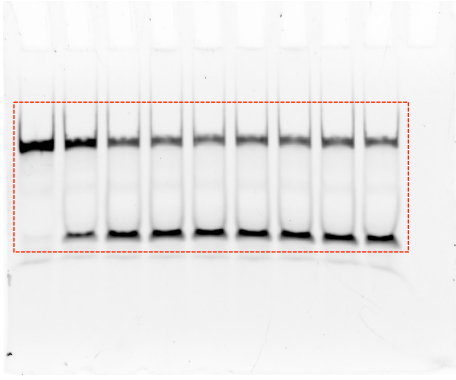
ED Fig. 2j



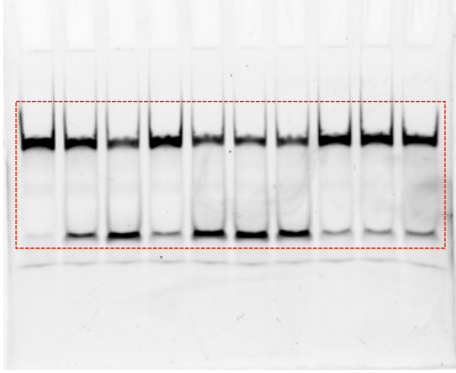
ED Fig. 2e



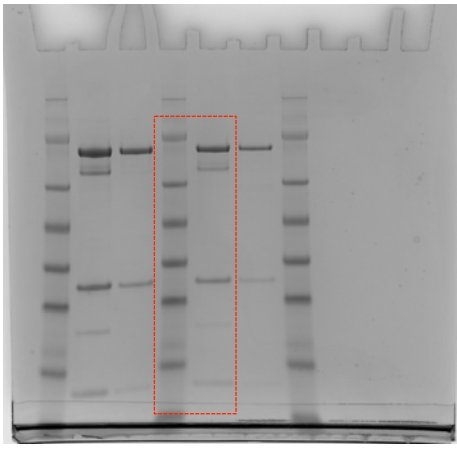
ED Fig. 2k



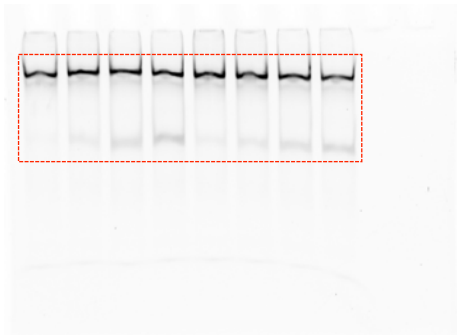
ED Fig. 2m



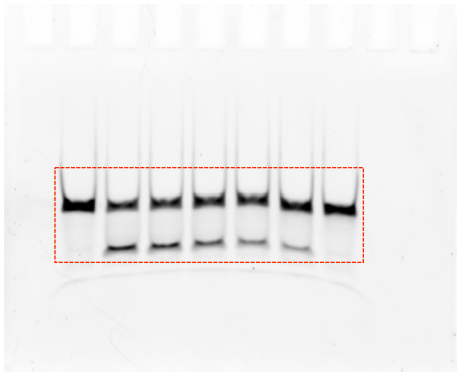
ED Fig. 2o



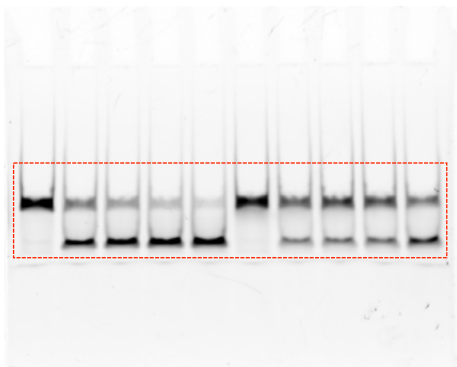
ED Fig. 3a



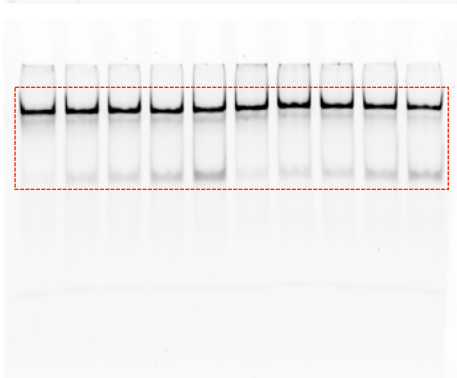
ED Fig. 3b



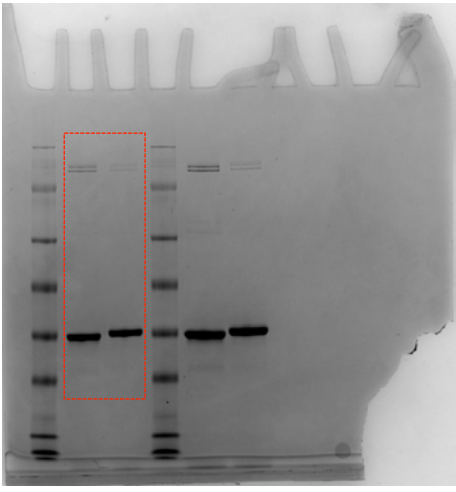
ED Fig. 3d



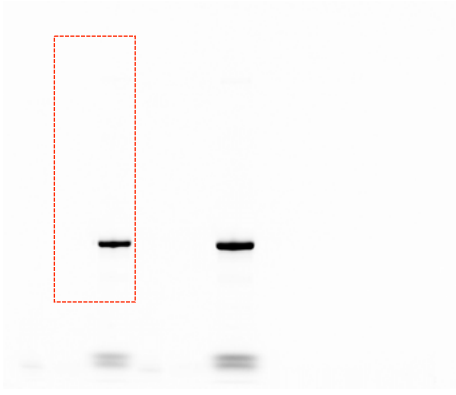
ED Fig. 3f



ED Fig. 3h

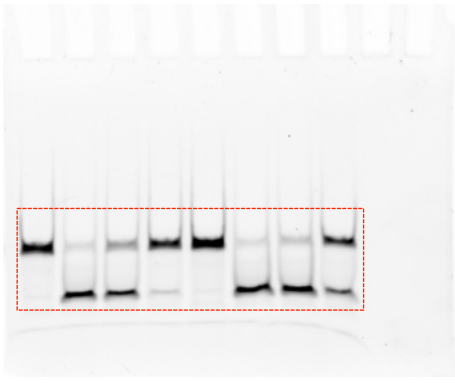


CBB

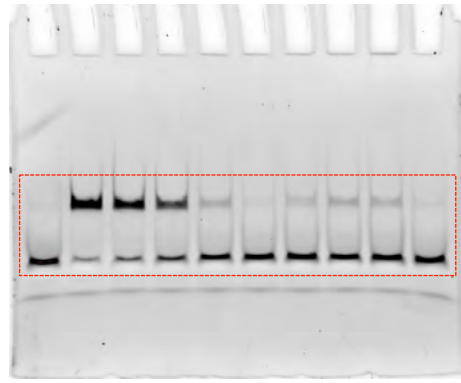


A488

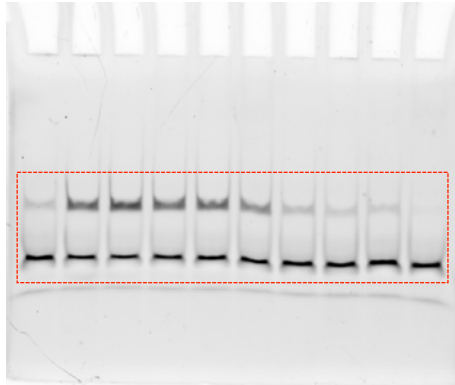
ED Fig. 4h



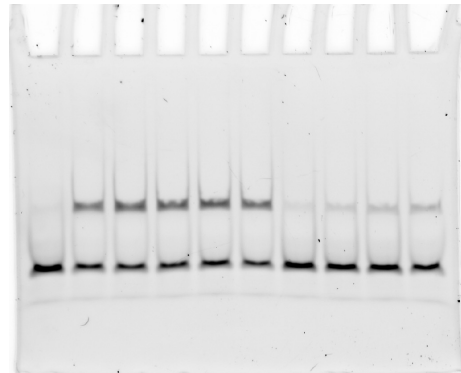
ED Fig. 5a



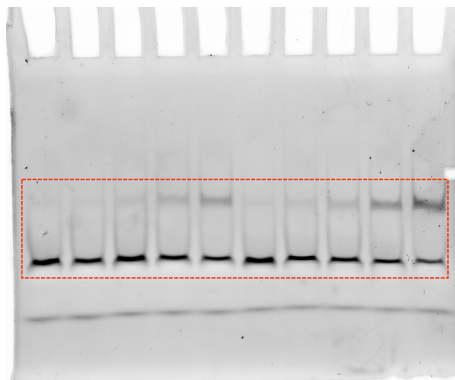
ED Fig. 5j



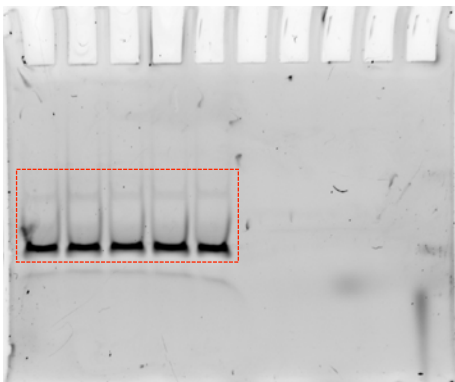
ED Fig. 5c



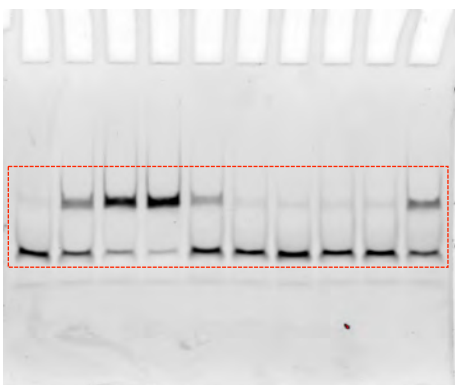
ED Fig. 5l



ED Fig. 5e



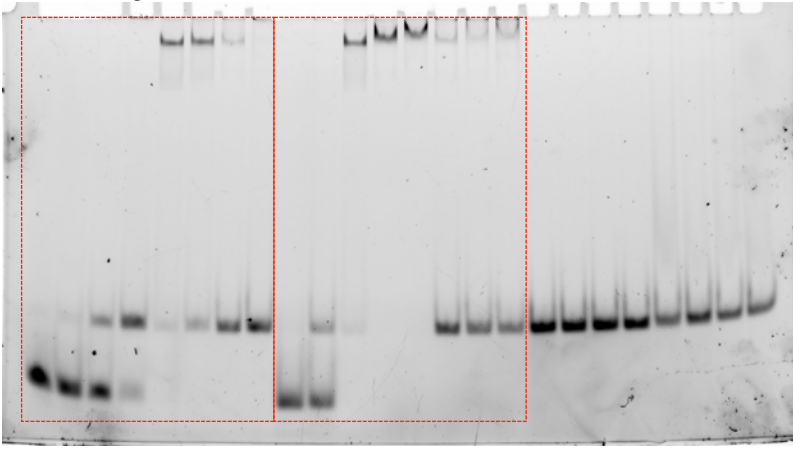
ED Fig. 5g



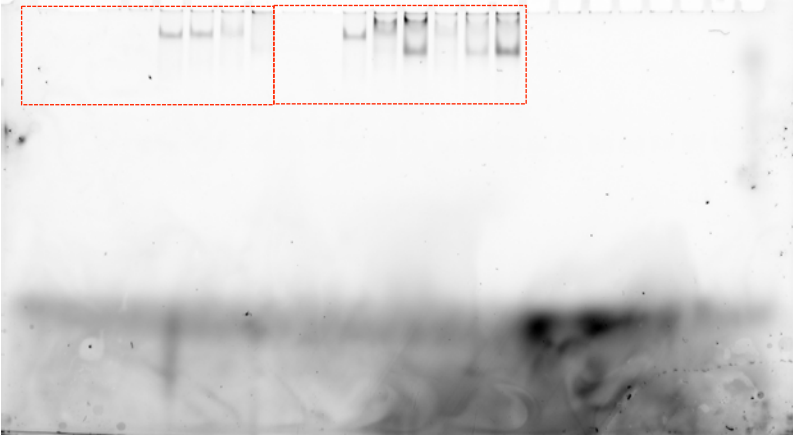
ED Fig. 5h

ED Fig. 6b

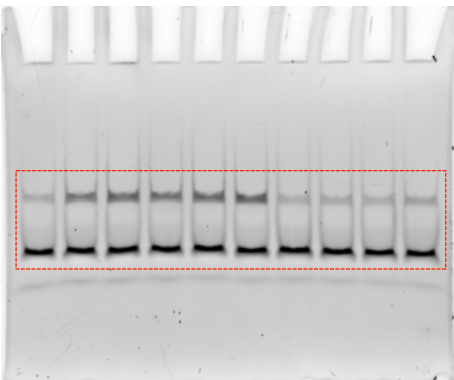
ED Fig. 6a



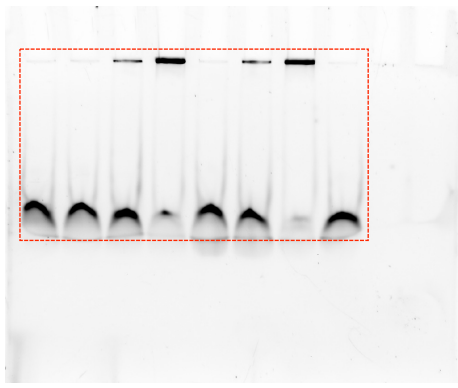
ED Fig. 6a,b (Top)



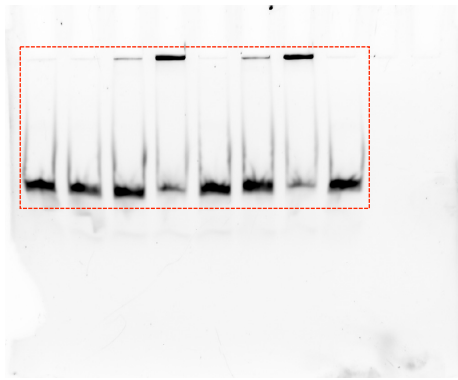
ED Fig. 6a,b (Bottom)



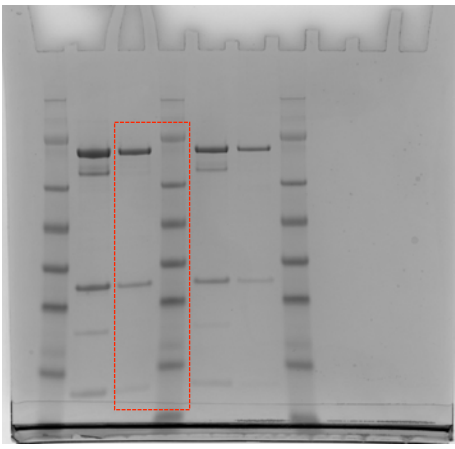
ED Fig. 6q



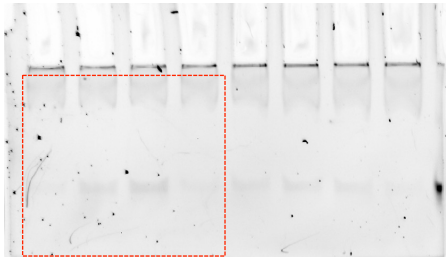
ED Fig. 7a



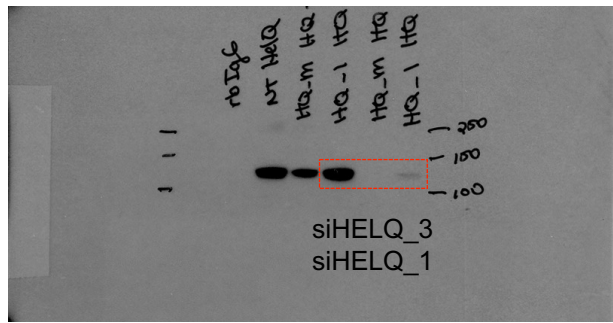
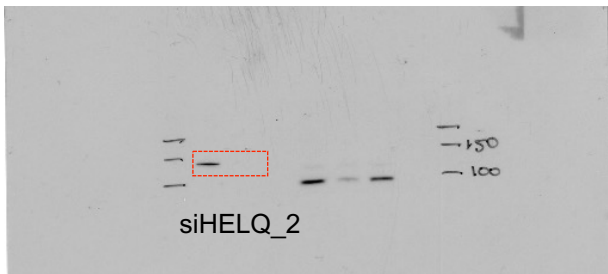
ED Fig. 7b



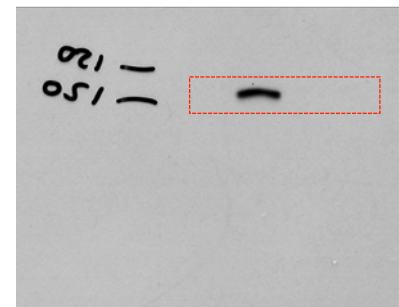
ED Fig. 8a (same protein ladder lane used as shown in ED Fig. 3a)



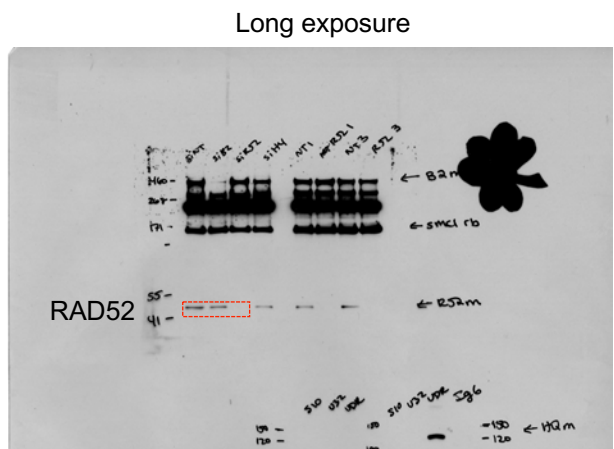
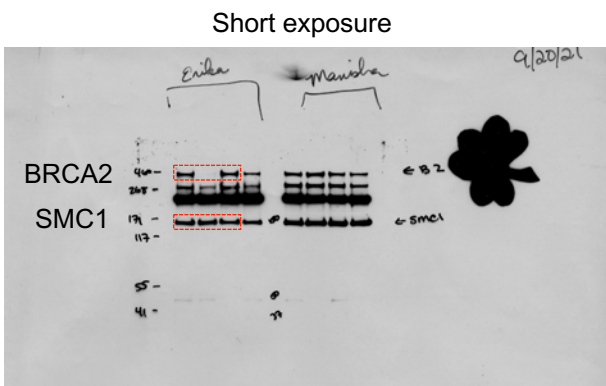
ED Fig. 8d



ED Fig. 9a



ED Fig. 9b



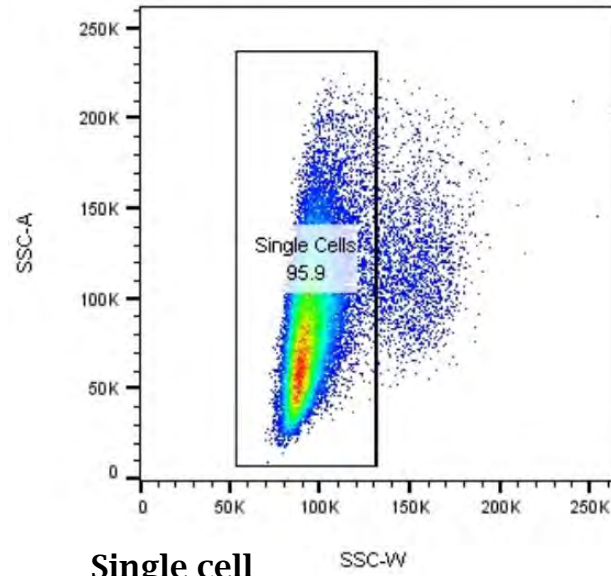
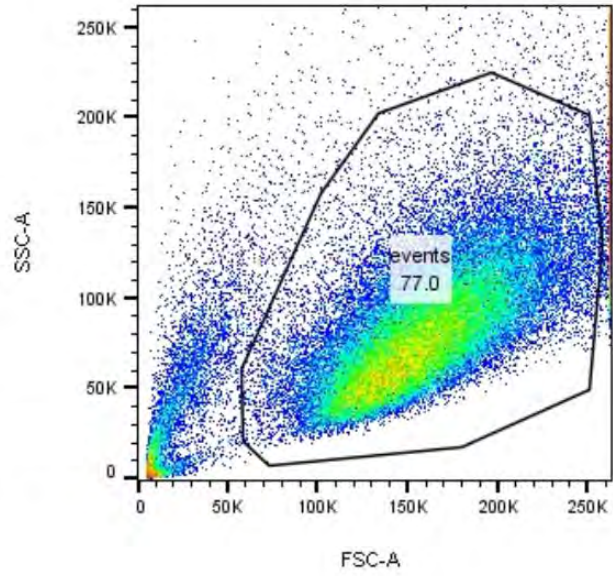
ED Fig. 9f

SI Figure 2

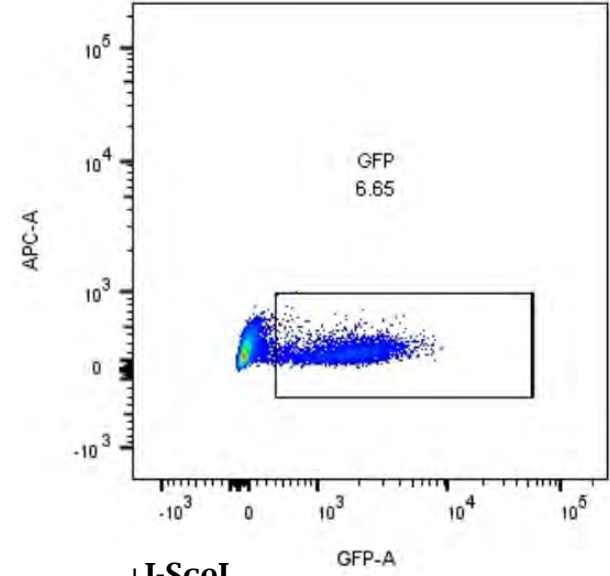
Legend:

Shown are representative plots from FlowJo with the FACs gating strategy for U2OS-DR, U2OS-SA, U2OS-SCR and EJ-DR

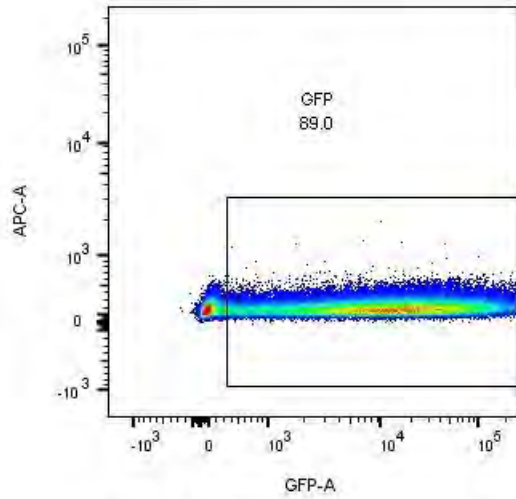
U2OS-DR



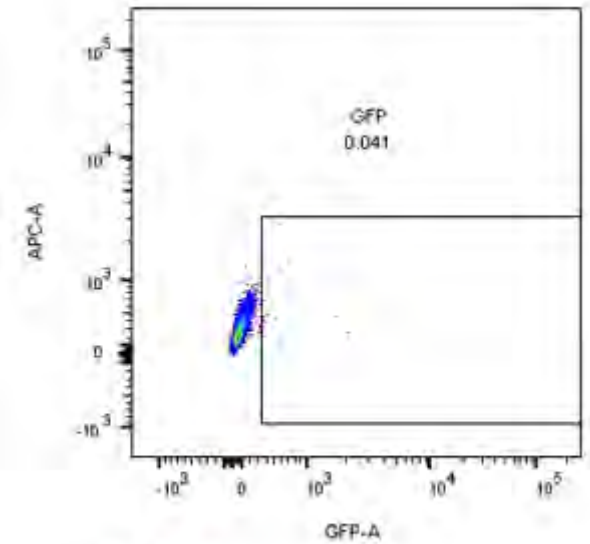
Single cell gating



+I-SceI

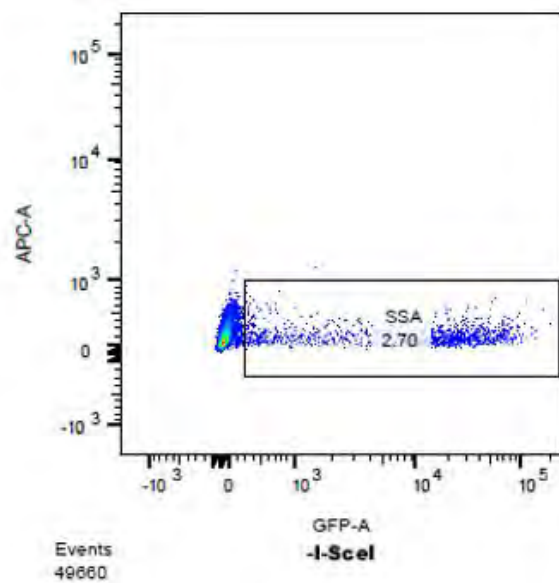
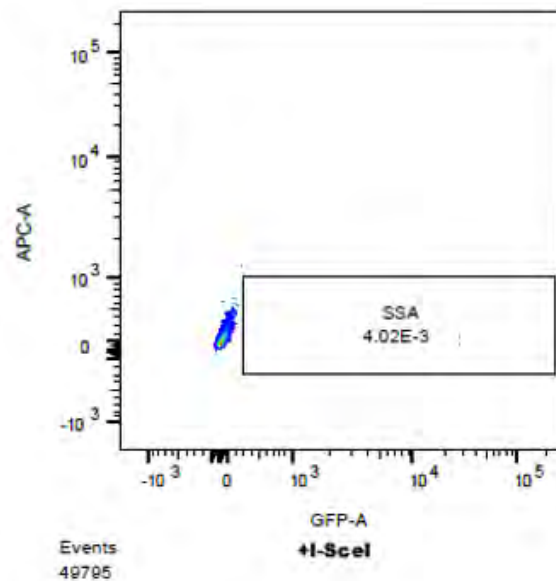


GFP positive control

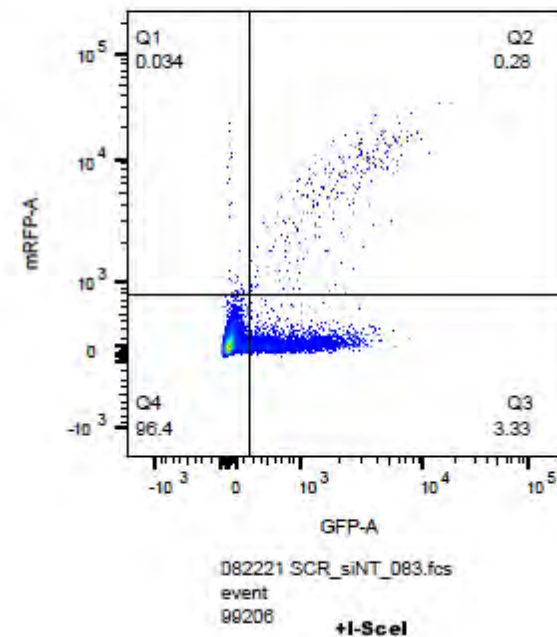
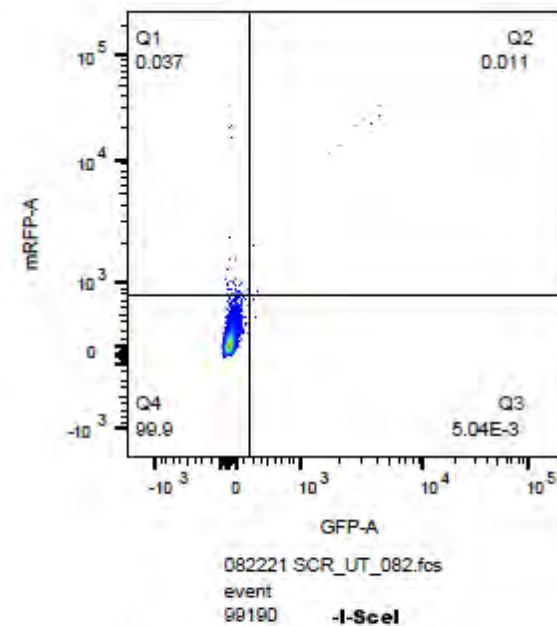


-I-SceI

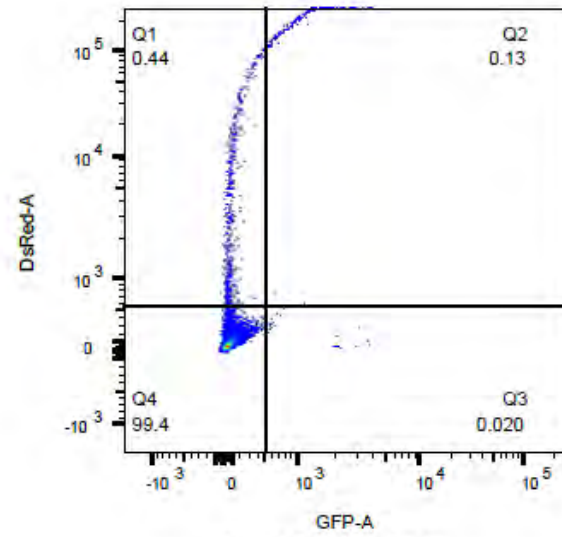
U2OS-SA



U2OS-SCR

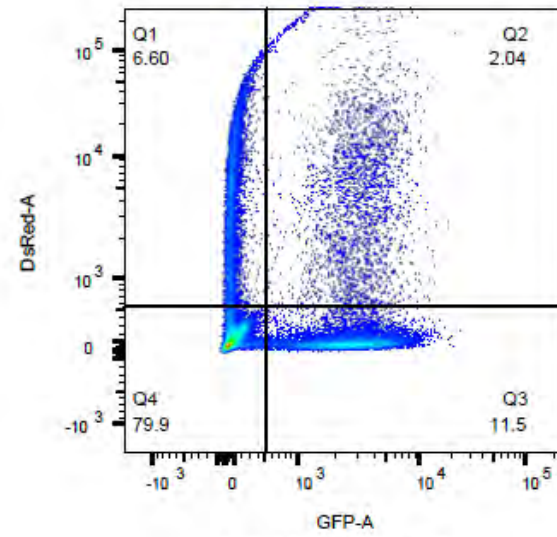


EJ-DR



052421 EJDR_UT_043.fcs
events
127023

-I-SceI



052421 EJDR_NT_042.fcs
events
133160

+I-SceI