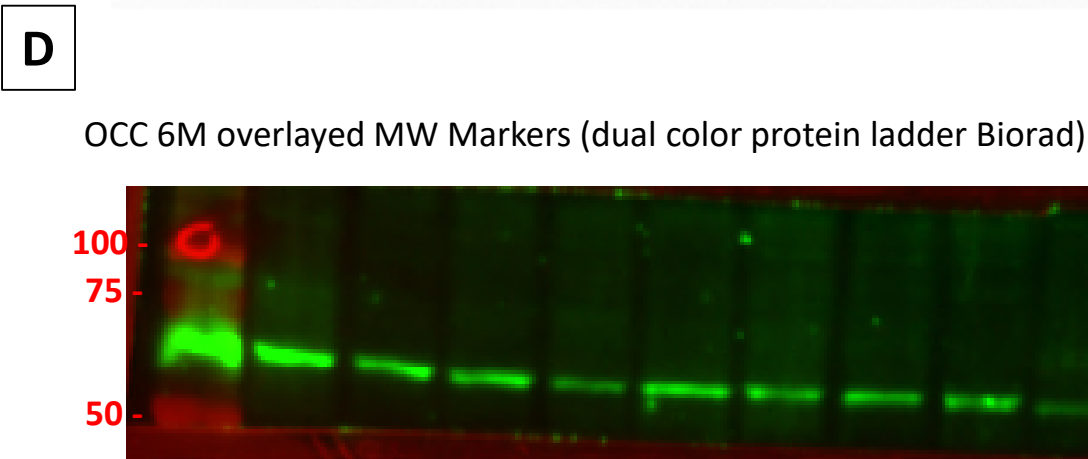
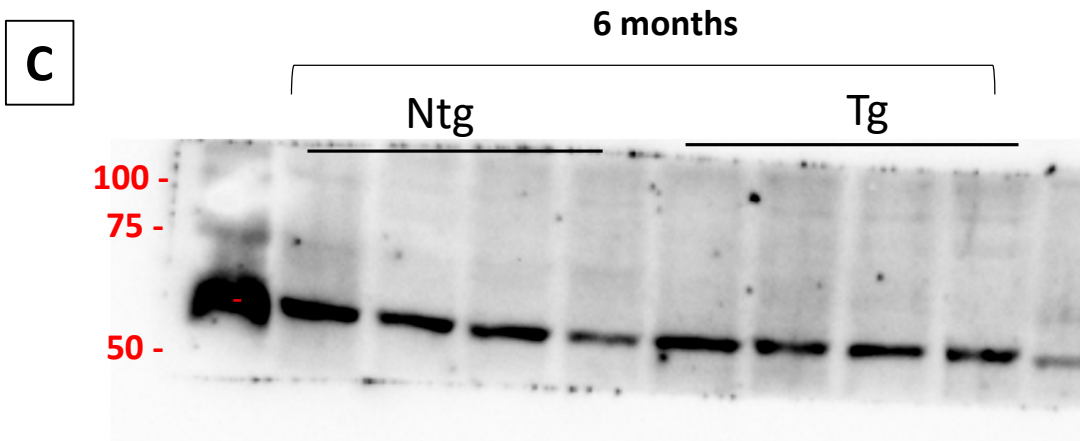
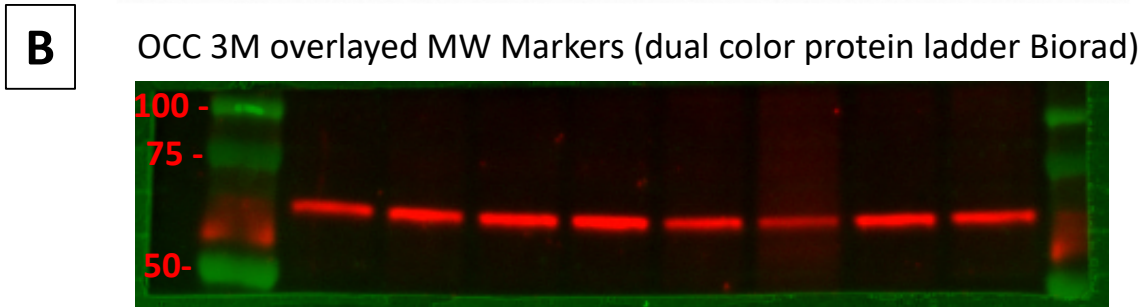
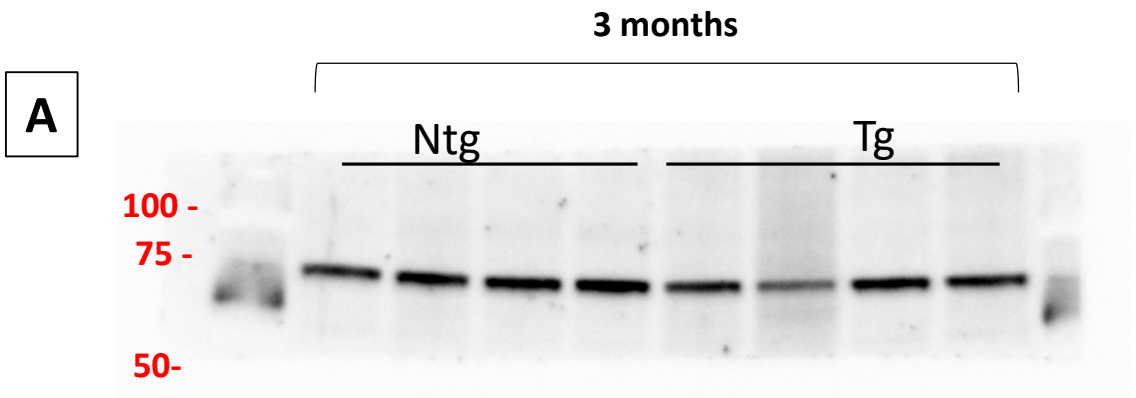
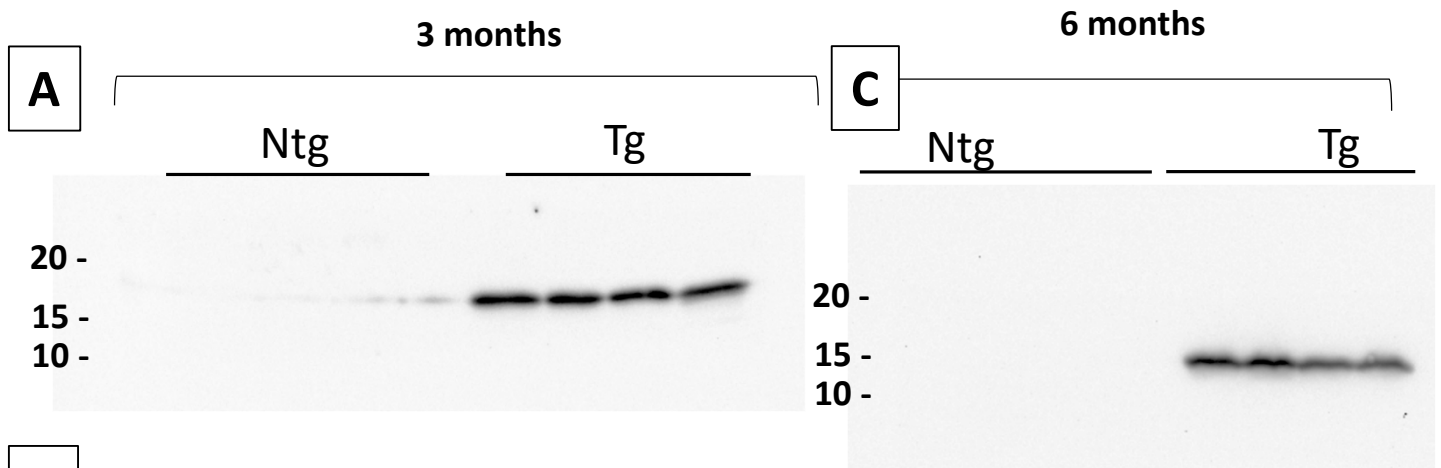


Supplementary Fig. 1 Enteric glial cells co-localize with TLR-2 in colonic tissue. Immunofluorescence staining of GFAP (enteric glial marker) and TLR-2 in colonic tissues from Tg and nTg animals at 3 months. Images were acquired with a Zeiss Apotome fluorescent microscope, with an objective 20x, scale bar =100 μ m.

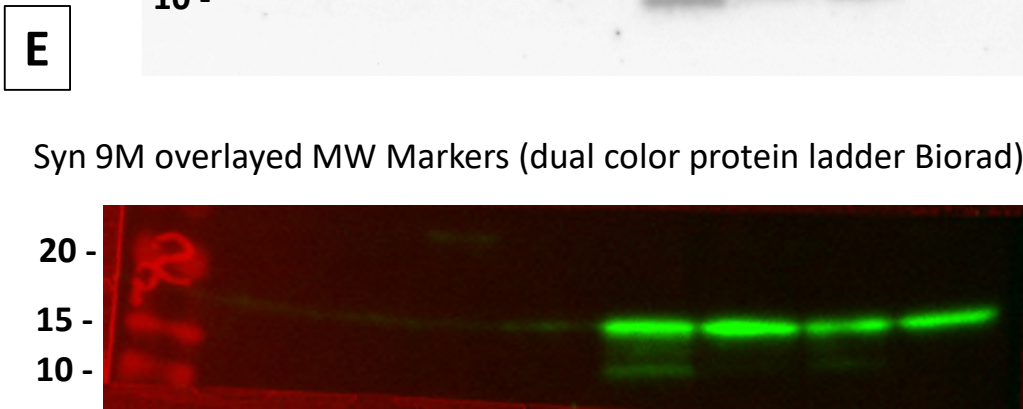
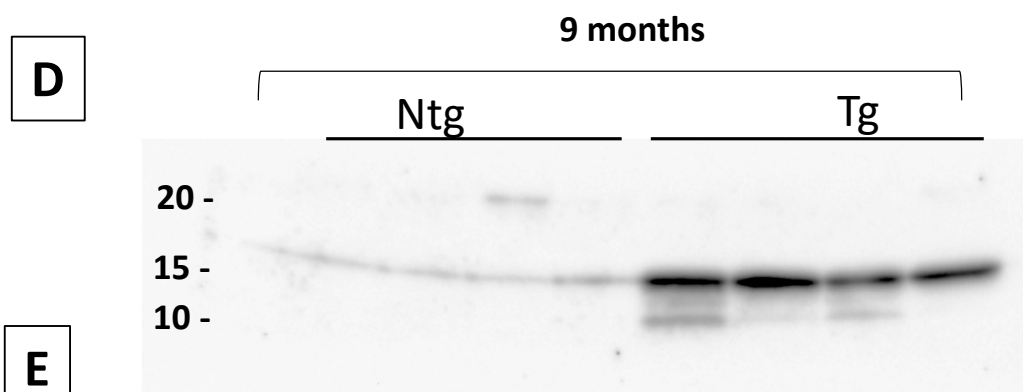
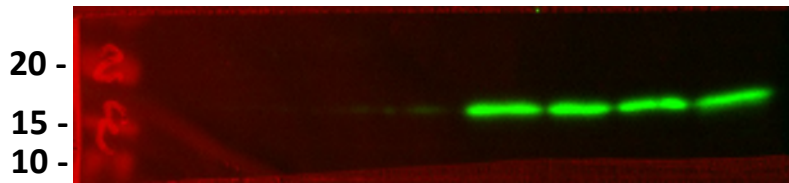
Abbreviations: GFAP, glial fibrillary acidic protein; nTg, non-transgenic; Tg, transgenic; TLR, toll like receptor.



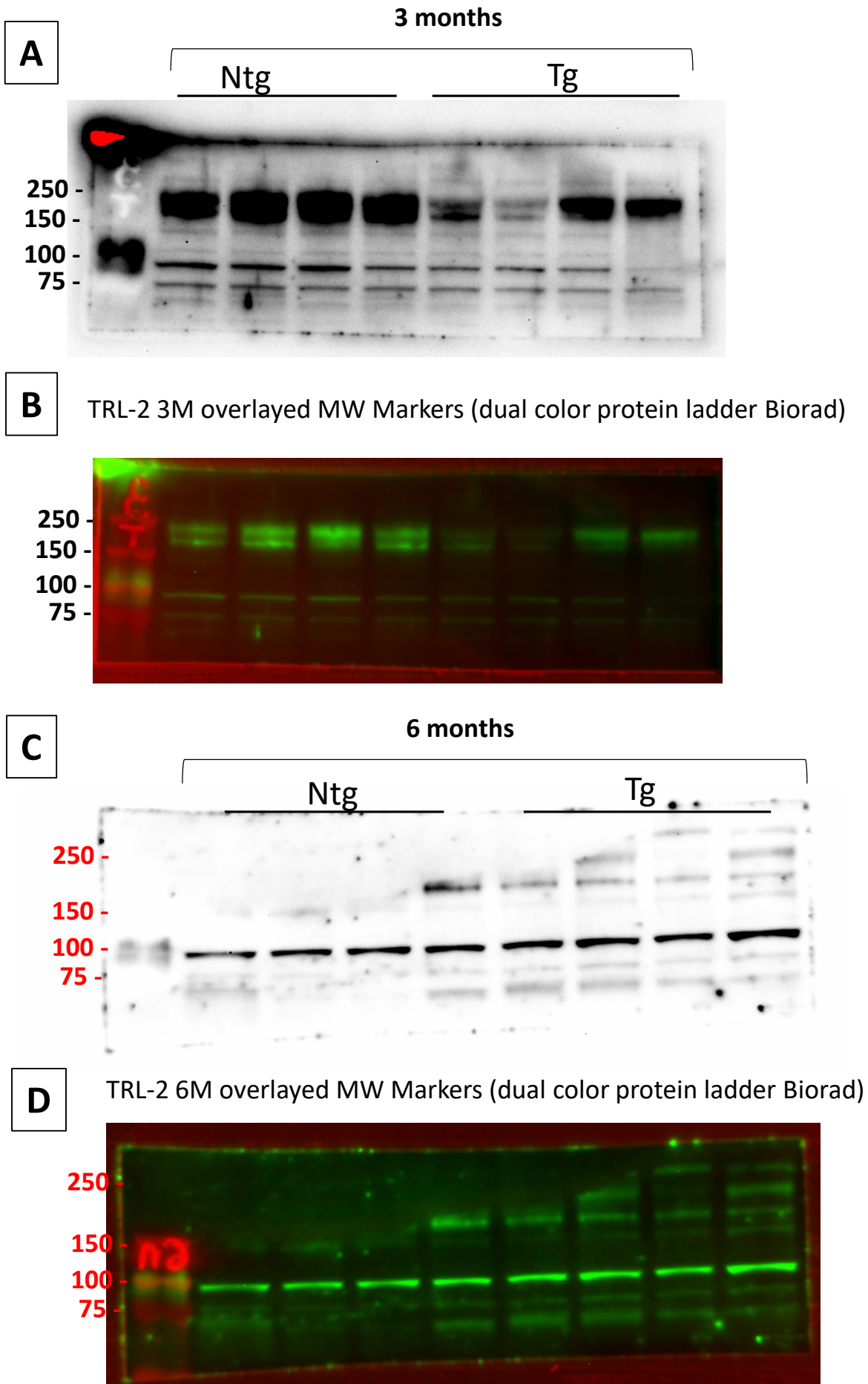
Representative “uncropped” blots of occludin (OCC) expression assessed by Western blot assay in colonic tissues from nTg and Tg mice at 3 (**A, B**) and 6 (**C, D**) months of age. (**B, D**) western blot overlap with MW markers.



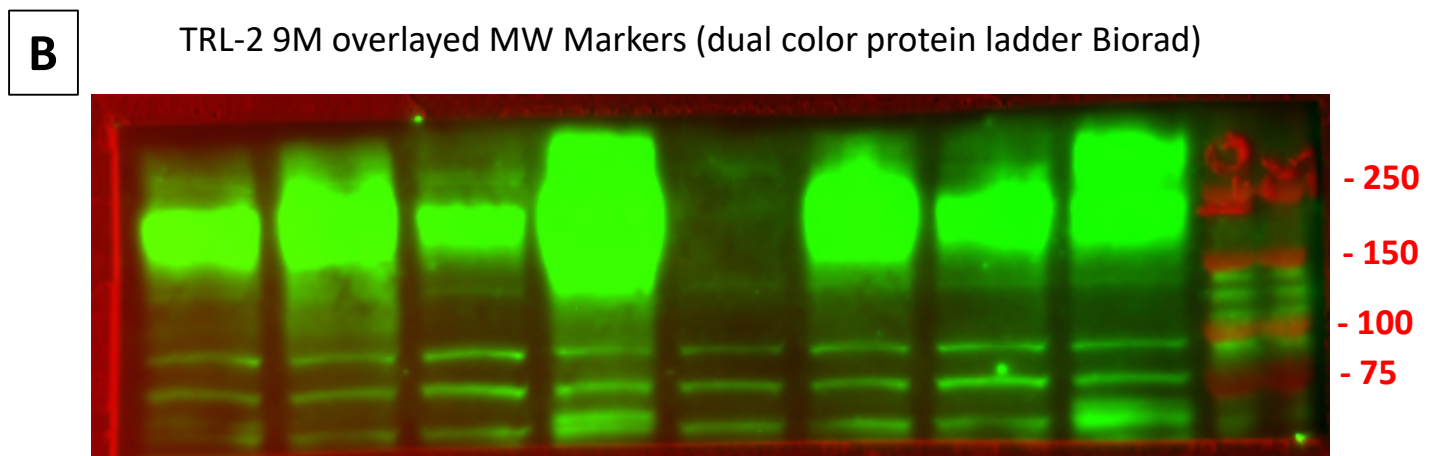
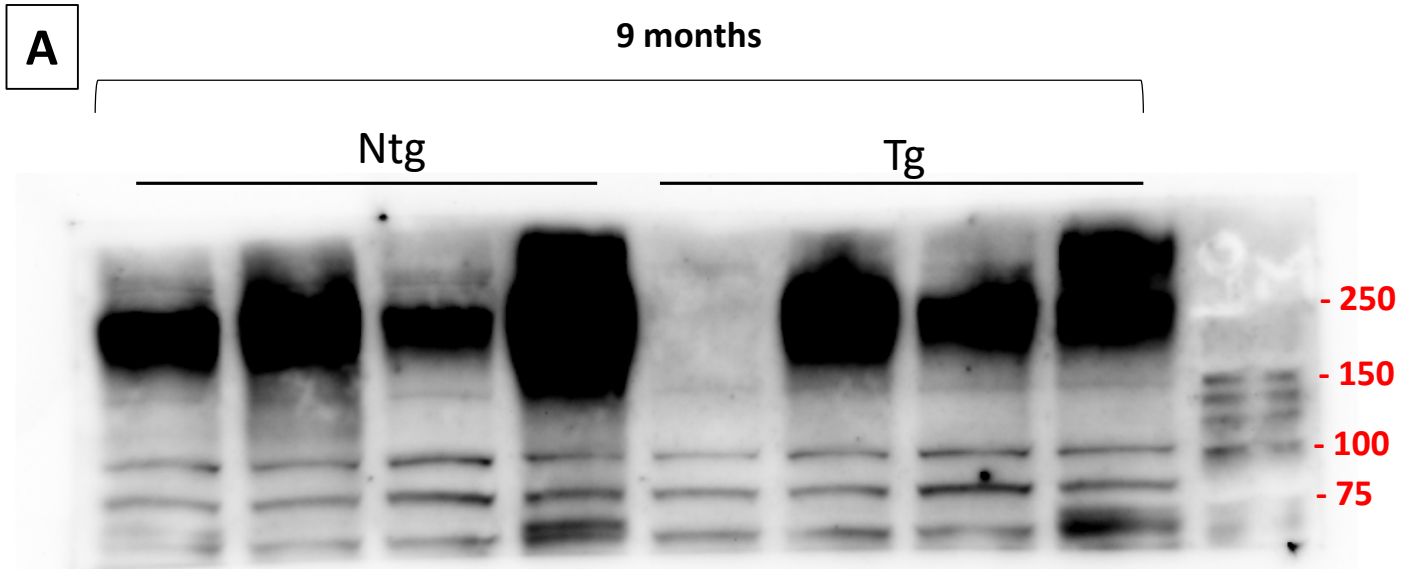
B Syn 3M overlaid MW Markers
(dual color protein ladder Biorad)



Representative “uncropped” blots of α -synuclein (α -syn) expression assessed by Western blot assay in colonic tissues from nTg and Tg mice at 3 (**A**, **B**), 6 (**C**) and 9 (**D**, **E**) months of age. (**B**, **E**) western blot overlap with MW markers.

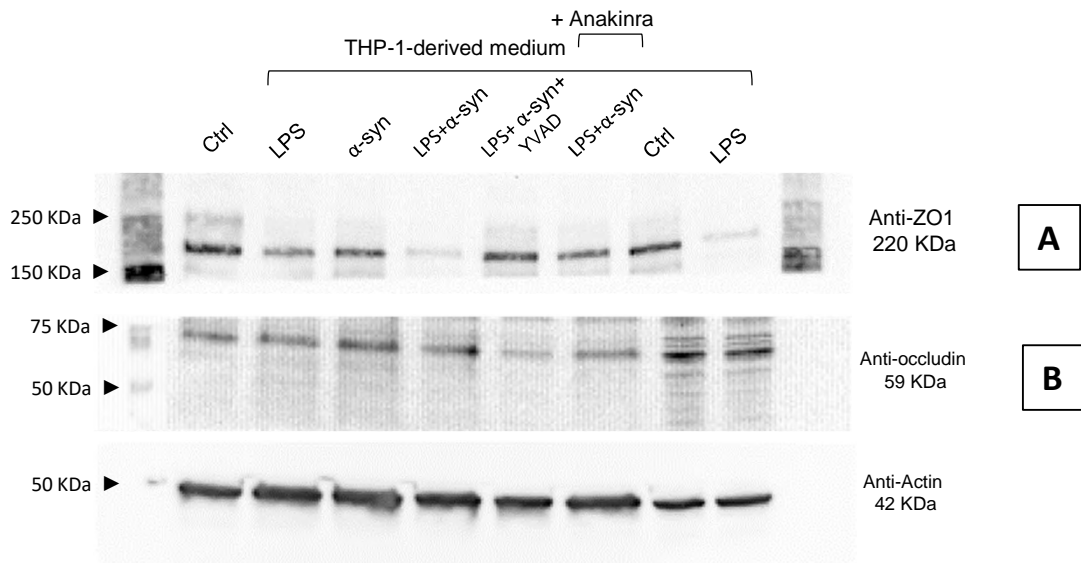


Representative “uncropped” blots of toll like receptor-2 (TLR-2) expression assessed by Western blot assay in colonic tissues from nTg and Tg mice at 3 (**A**, **B**) and 6 (**C**, **D**) months of age. (**B**, **D**) western blot overlap with MW markers.

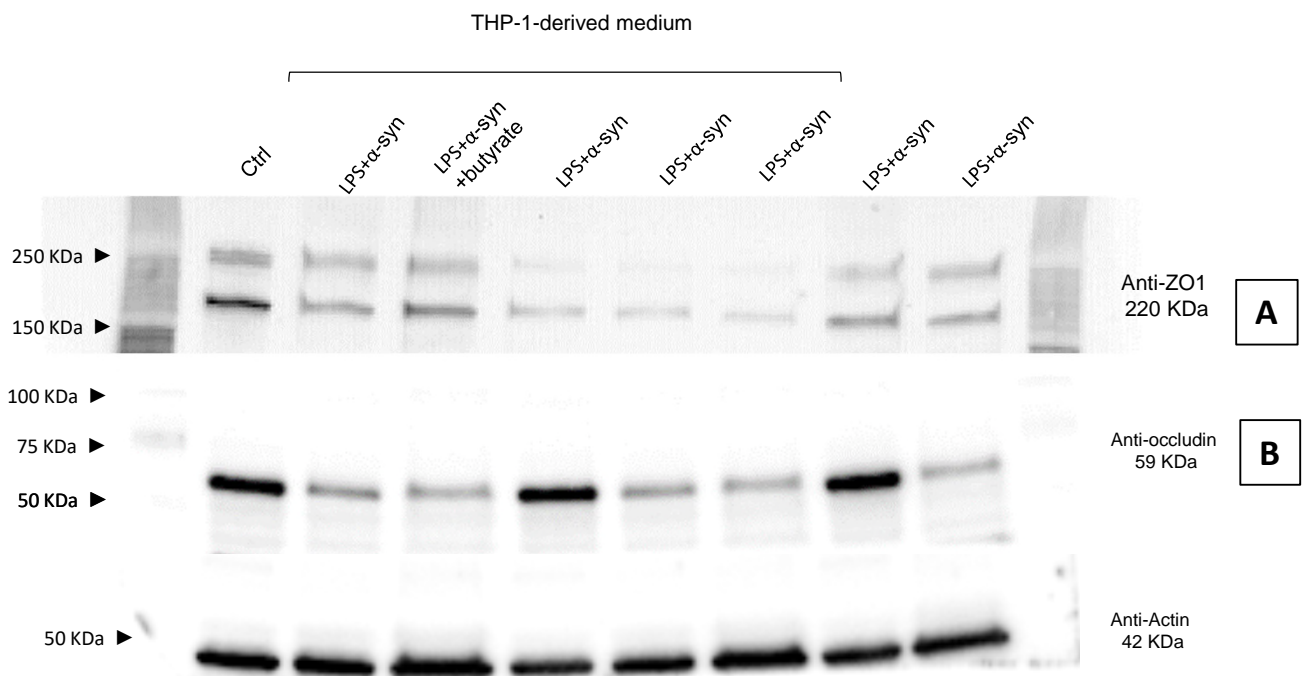


Representative “uncropped” blots of toll like receptor-2 (TLR-2) expression assessed by Western blot assay in colonic tissues from nTg and Tg mice at 9 (**A**, **B**) months of age. (**B**) western blot overlap with MW markers.

Composite image for marker view



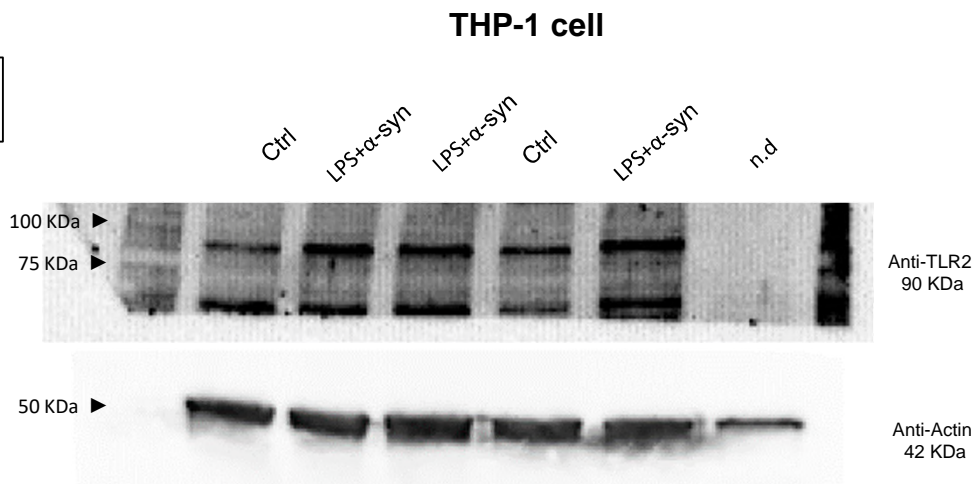
Representative “uncropped” blots of ZO-1 (A) and occludin (B) expression assessed by Western blot assay in cultured Caco-2 cells treated with conditioned medium derived from THP-1 cells. The membrane was cut for the detection of ZO-1, occludin and actin. These blots correspond to Figure 4B in the manuscript.



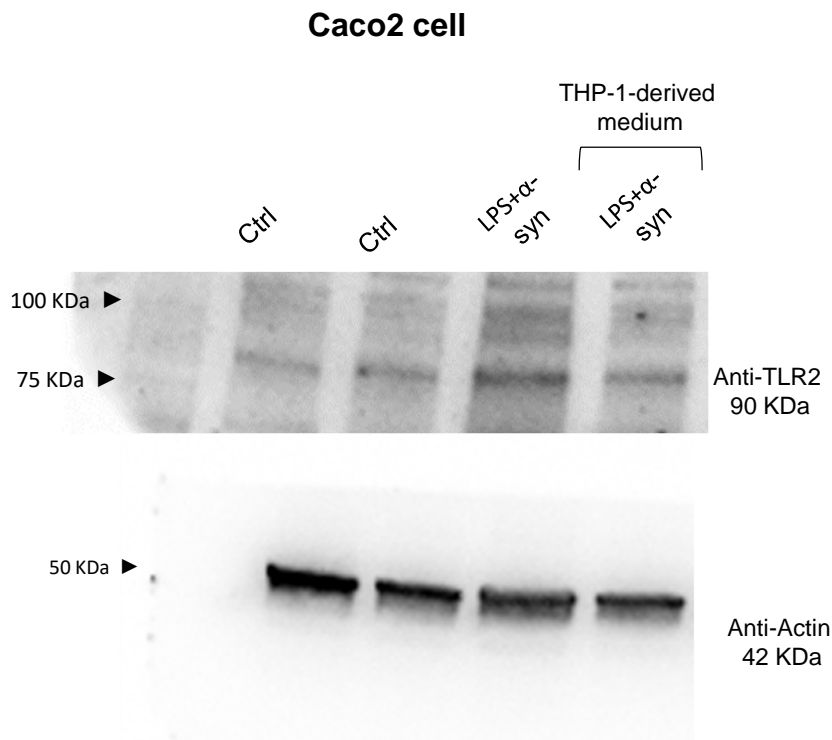
Representative “uncropped” blots of ZO-1 (A) and occludin (B) expression assessed by Western blot assay in cultured Caco-2 cells treated with conditioned medium derived from THP-1 cells treated with α -syn plus LPS, in the absence or in the presence of butyrate, or with α -syn plus LPS directly in the medium. The membrane was cut for the detection of ZO-1, occludin and actin. These blots correspond to Figure 5A e 5B in the manuscript

Composite image for marker view

A



B



Representative “uncropped” blots of TLR-2 expression assessed by Western blot assay in cultured THP-1 (A) and Caco-2 (B) cells treated with LPS and α -syn and Caco-2 incubated with conditioned medium derived from THP-1 cells treated with α -syn and LPS. These blots correspond to Figure 5C in the manuscript