

**A Clinical Tool to Guide Selection and Utilization of Marginal Donor Livers with Graft  
Biopsy in Liver Transplantation**

*Supplemental Materials*

Contents

Page

|    |  |
|----|--|
| 2  | Table S1. Complete Population Characteristics  |
| 5  | Table S2. Final Multivariable Proportional Hazards Models for Allograft Survival in Test Cohort (30-days to 3-years) |
| 9  | Table S3. Final Combined Multivariable Proportional Hazards Model in Test and Validate Cohorts (30-days to 3-years)  |
| 13 | Figure S1. Three-year allograft survival in Test and Validate Cohorts  |
| 14 | Figure S2. Distribution of Mini-LTAB scores in Test and Validate Cohorts   |
| 15 | Figure S3. Cross-over between LTAB and Mini-LTAB Risk Groups   |

Table S1. Complete Population Characteristics

|                                    | All Transplants<br>(n=16 691) | Test Cohort<br>(n=11 600) | Validate Cohort<br>(n=5,091) | p-Value |
|------------------------------------|-------------------------------|---------------------------|------------------------------|---------|
| <b>Donor Characteristics</b>       |                               |                           |                              |         |
| Age, years (median, IQR)           | 51 (40 – 61)                  | 51 (40 – 61)              | 51 (40 – 60)                 | 0.28    |
| Gender, female (n, %)              | 7,745 (46.4%)                 | 5,406 (46.6%)             | 2,339 (45.9%)                | 0.43    |
| Ethnicity                          |                               |                           |                              | 0.23    |
| White                              | 11 343 (68.0%)                | 7,923 (68.3%)             | 3,420 (67.2%)                |         |
| Black                              | 3,086 (18.5%)                 | 2,109 (18.2%)             | 977 (19.2%)                  |         |
| Hispanic                           | 1,632 (9.8%)                  | 1,147 (9.9%)              | 485 (9.5%)                   |         |
| Asian                              | 408 (2.4%)                    | 269 (2.3%)                | 139 (2.7%)                   |         |
| Other                              | 222 (1.3%)                    | 152 (1.3%)                | 70 (1.4%)                    |         |
| Body Mass Index, kg/m <sup>2</sup> | 28.2<br>(24.3 – 33.4)         | 28.2<br>(24.3 – 33.3)     | 28.3<br>(24.3 – 33.6)        | 0.37    |
| Blood Type                         |                               |                           |                              | 0.67    |
| O                                  | 7,995 (47.9%)                 | 5,557 (47.9%)             | 2,438 (47.9%)                |         |
| A                                  | 6,217 (37.3%)                 | 4,331 (37.3%)             | 1,886 (37.1%)                |         |
| B                                  | 1,974 (11.8%)                 | 1,353 (11.7%)             | 621 (12.2%)                  |         |
| AB                                 | 505 (3.0%)                    | 359 (3.1%)                | 146 (2.9%)                   |         |
| MaS on Biopsy (%)                  | 5 (0 – 10)                    | 5 (0 – 10)                | 5 (0 – 10)                   | 0.41    |
| Cause of Death                     |                               |                           |                              | 0.93    |
| Anoxia                             | 4,306 (25.8%)                 | 3,002 (25.9%)             | 1,304 (25.6%)                |         |
| Trauma                             | 3,623 (21.7%)                 | 2,524 (21.8%)             | 1,099 (21.6%)                |         |
| CVA/Stroke                         | 8,377 (50.2%)                 | 5,811 (50.1%)             | 2,566 (50.4%)                |         |
| Other                              | 385 (2.3%)                    | 263 (2.3%)                | 122 (2.4%)                   |         |
| Diabetes                           | 3,221 (19.4%)                 | 2,219 (19.3%)             | 1,002 (19.8%)                | 0.39    |
| Hypertension                       | 8,643 (52.1%)                 | 6,003 (52.1%)             | 2,640 (52.2%)                | 0.91    |
| Prior Malignancy                   | 841 (5.1%)                    | 601 (5.2%)                | 240 (4.7%)                   | 0.22    |
| Prior MI                           | 994 (6.0%)                    | 682 (5.9%)                | 312 (6.1%)                   | 0.55    |
| CDC High Risk                      | 2,076 (12.4%)                 | 1,433 (12.4%)             | 643 (12.6%)                  | 0.63    |
| Cigarette Smoker                   | 5,704 (34.2%)                 | 3,964 (34.2%)             | 1,740 (34.2%)                | 0.99    |
| Any Drug Use                       | 5,822 (34.9%)                 | 4,010 (34.6%)             | 1,812 (35.6%)                | 0.20    |
| HCV-Positive                       | 1,367 (8.2%)                  | 922 (8.0%)                | 445 (8.7%)                   | 0.09    |
| HBV-Positive                       | 1,511 (9.1%)                  | 1,060 (9.1%)              | 451 (8.9%)                   | 0.58    |
| EBV-Positive                       | 14 368 (86.1%)                | 10 008 (86.3%)            | 4,360 (85.6%)                | 0.27    |
| CMV-Positive                       | 11 353 (68.0%)                | 7,932 (68.4%)             | 3,421 (67.2%)                | 0.13    |
| Terminal AST                       | 41 (25 – 81)                  | 42 (25 – 81)              | 41 (25 – 80)                 | 0.30    |
| Terminal ALT                       | 33 (21 – 66)                  | 34 (21 – 67)              | 33 (21 – 67)                 | 0.72    |
| Terminal Bilirubin                 | 0.7 (0.4 – 1.1)               | 0.7 (0.4 – 1.1)           | 0.7 (0.4 – 1.1)              | 0.91    |
| <b>Transplant Characteristics</b>  |                               |                           |                              |         |
| Cold Ischemic Time, hrs            | 6.6 (5.1 – 8.4)               | 6.6 (5.1 – 8.4)           | 6.5 (5.2 – 8.3)              | 0.36    |
| CIT Groups                         |                               |                           |                              | 0.44    |
| <4 Hours                           | 1,356 (8.3%)                  | 938 (8.2%)                | 418 (8.4%)                   |         |
| 4 to <6 Hours                      | 4,594 (28.0%)                 | 3,187 (28.0%)             | 1,407 (28.1%)                |         |
| 6 to <8 Hours                      | 5,164 (31.5%)                 | 3,543 (31.1%)             | 1,621 (32.4%)                |         |

|                                    |                       |                       |                       |      |
|------------------------------------|-----------------------|-----------------------|-----------------------|------|
| 8 to <10 Hours                     | 3,212 (19.6%)         | 2,262 (19.8%)         | 950 (19.0%)           |      |
| 10 to <12 Hours                    | 1,357 (8.3%)          | 962 (8.4%)            | 395 (7.9%)            |      |
| ≥12 Hours                          | 727 (4.4%)            | 511 (4.5%)            | 216 (4.3%)            |      |
| <b>Recipient Characteristics</b>   |                       |                       |                       |      |
| Age, years                         | 56 (51 – 62)          | 56 (51 – 61)          | 57 (51 – 62)          | 0.39 |
| Gender, female                     | 4,987 (0.74)          | 3,475 (30.0%)         | 1,512 (29.7%)         | 0.74 |
| Ethnicity                          |                       |                       |                       | 0.68 |
| White                              | 12 324 (73.8%)        | 8,559 (73.8%)         | 3,765 (74.0%)         |      |
| Black                              | 1,550 (9.3%)          | 1,080 (9.3%)          | 470 (9.2%)            |      |
| Hispanic                           | 1,877 (11.3%)         | 1,306 (11.3%)         | 571 (11.2%)           |      |
| Asian                              | 702 (4.2%)            | 480 (4.1%)            | 222 (4.4%)            |      |
| Other                              | 238 (1.4%)            | 175 (1.5%)            | 63 (1.2%)             |      |
| Body Mass Index, kg/m <sup>2</sup> | 28.1<br>(24.6 – 32.3) | 28.1<br>(24.7 – 32.4) | 28.1<br>(24.6 – 32.2) | 0.61 |
| Blood Type                         |                       |                       |                       | 0.79 |
| O                                  | 7,650 (45.8%)         | 5,323 (45.9%)         | 2,327 (45.7%)         |      |
| A                                  | 6,118 (36.7%)         | 4,253 (38.9%)         | 1,865 (36.6%)         |      |
| B                                  | 2,164 (13.0%)         | 1,488 (12.8%)         | 676 (13.3%)           |      |
| AB                                 | 759 (4.6%)            | 536 (4.6%)            | 223 (4.4%)            |      |
| MELD-Na Score                      | 21.6<br>(15.0 – 29.2) | 21.6<br>(15.0 – 29.3) | 21.3<br>(15.0 – 29.0) | 0.16 |
| Exception Points                   |                       |                       |                       | 0.66 |
| No Exceptions                      | 10 360 (62.1%)        | 7,224 (62.3%)         | 3,136 (61.6%)         |      |
| HCC Exceptions                     | 4,677 (28.0%)         | 3,239 (27.9%)         | 1,438 (28.3%)         |      |
| Other Exceptions                   | 1,654 (9.9%)          | 1,137 (9.8%)          | 517 (10.2%)           |      |
| Etiology of ESLD                   |                       |                       |                       | 0.70 |
| Acute Liver Failure                | 517 (3.1%)            | 362 (3.1%)            | 155 (3.0%)            |      |
| Alcohol                            | 2,113 (12.7%)         | 1,495 (12.9%)         | 618 (12.1%)           |      |
| NASH/CC                            | 2,039 (12.2%)         | 1,438 (12.4%)         | 601 (11.8%)           |      |
| Hepatitis C Virus                  | 4,504 (27.0%)         | 3,082 (26.6%)         | 1,408 (27.7%)         |      |
| Hepatitis B Virus                  | 255 (1.5%)            | 179 (1.5%)            | 76 (1.5%)             |      |
| HCC                                | 4,605 (27.6%)         | 3,197 (27.6%)         | 1,408 (27.7%)         |      |
| Cholestatic Disease                | 1,159 (6.9%)          | 805 (6.9%)            | 354 (7.0%)            |      |
| Congenital/Metabolic               | 459 (2.8%)            | 326 (2.8%)            | 133 (2.6%)            |      |
| Cirrhosis (NOS)                    | 703 (4.2%)            | 479 (4.1%)            | 224 (4.4%)            |      |
| Other                              | 337 (2.0%)            | 237 (2.0%)            | 100 (2.0%)            |      |
| Prior Malignancy                   | 3,137 (18.8%)         | 2,191 (18.9%)         | 946 (18.6%)           | 0.65 |
| Diabetes                           | 4,226 (25.3%)         | 2,940 (25.3%)         | 1,286 (25.3%)         | 0.91 |
| EBV-Positive                       | 10 484 (62.8%)        | 7,324 (63.1%)         | 3,160 (62.1%)         | 0.19 |
| CMV-Positive                       | 10 035 (66.1%)        | 6,978 (66.1%)         | 3,057 (66.0%)         | 0.91 |
| Prior Abdominal Surgery            | 7,077 (43.2%)         | 4,939 (43.3%)         | 2,138 (42.8%)         | 0.58 |
| Prior TIPS                         | 1,522 (9.3%)          | 1,051 (9.2%)          | 471 (9.4%)            | 0.66 |
| PV Thrombosis                      | 1,629 (9.9%)          | 1,139 (9.9%)          | 490 (9.8%)            | 0.74 |
| Encephalopathy                     | 10 223 (61.3%)        | 7,096 (61.2%)         | 3,127 (61.4%)         | 0.76 |
| Ascites                            | 12 323 (73.8%)        | 8,542 (73.6%)         | 3,781 (74.3%)         | 0.39 |

|                                      |              |            |            |      |
|--------------------------------------|--------------|------------|------------|------|
| Dialysis 2x Within Week Prior to Txp | 1,097 (6.4%) | 772 (6.7%) | 325 (6.4%) | 0.54 |
| On Mechanical Ventilation at Txp     | 613 (3.7%)   | 421 (3.6%) | 192 (3.8%) | 0.65 |

Abbreviations: ALT- alanine aminotransferase, AST- aspartate aminotransferase, CMV- cytomegalovirus, EBV- Epstein-Barr virus, ESLD- end-stage liver disease, HBV- hepatitis B virus, HCC- hepatocellular carcinoma, HCV- hepatitis C virus, IQR- interquartile range, MaS- macrosteatosis, MELD-Na- Model for End-stage Liver Disease- Sodium score, MI- myocardial infarction, NASH/CC- nonalcoholic steatosis/cryptogenic cirrhosis, PV- portal vein, TIPS- transjugular intrahepatic portosystemic shunt

Table S2A. 30 Day Allograft Survival (Test Population)

|  | Univariate Analysis |               |         | Multivariable Analysis |               |         |
|--|---------------------|---------------|---------|------------------------|---------------|---------|
|  | HR                  | 95% CI        | p-Value | HR                     | 95% CI        | p-Value |
| <b>Donor Characteristics</b>   |                     |               |         |                        |               |         |
| MaS on Biopsy<br>(per % steatosis)   | 1.010               | 1.004 – 1.015 | <0.001  | 1.010                  | 1.004 – 1.016 | 0.001   |
| <b>Transplant Characteristics</b>  |                     |               |         |                        |               |         |
| Cold Ischemic Time   |                     |               | <0.001  |                        |               | <0.001  |
| <4 Hours   | Reference           |               |         | Reference              |               |         |
| 4 to <6 Hours  | 1.348               | 0.889 – 2.044 |         | 1.363                  | 0.877 – 2.117 |         |
| 6 to <8 Hours  | 1.556               | 1.034 – 2.340 |         | 1.508                  | 0.977 – 2.329 |         |
| 8 to <10 Hours   | 2.014               | 1.330 – 3.049 |         | 1.872                  | 1.201 – 2.918 |         |
| 10 to >12 Hours  | 2.353               | 1.501 – 3.690 |         | 1.882                  | 1.150 – 3.081 |         |
| ≥12 Hours  | 3.028               | 1.871 – 4.899 |         | 2.871                  | 1.697 – 4.856 |         |
| <b>Recipient Characteristics</b>   |                     |               |         |                        |               |         |
| Body Mass Index (per kg/m <sup>2</sup> )   | 1.028               | 1.104 – 1.042 | <0.001  | 1.022                  | 1.007 – 1.037 | 0.004   |
| MELD-Na Score (per point)  | 1.019               | 1.011 – 1.027 | <0.001  | 1.021                  | 1.009 – 1.033 | <0.001  |
| Exception Points Awarded   |                     |               | 0.001   |                        |               | <0.001  |
| No Exception Points  | Reference           |               |         | Reference              |               |         |
| HCC Exception Points   | 0.698               | 0.568 – 0.858 |         | 1.241                  | 0.946 – 1.629 |         |
| Other Exception Points   | 1.115               | 0.858 – 1.448 |         | 1.831                  | 1.338 – 2.509 |         |
| Prior Abdominal Surgery  | 1.432               | 1.212 – 1.692 | <0.001  | 1.434                  | 1.200 – 1.714 | <0.001  |
| Portal Vein Thrombosis   | 2.129               | 1.721 – 2.635 | <0.001  | 2.052                  | 1.631 – 2.583 | <0.001  |
| On Mechanical Ventilation at<br>Time of Transplant                                     | 1.768               | 1.358 – 2.302 | <0.001  | 3.583                  | 2.647 – 4.851 | <0.001  |
| *Year of transplant and UNOS region of transplant controlled for by inclusion in model |                     |               |         |                        |               |         |

Table S2B. 90 Day Allograft Survival (Test Population)

|  | Univariate Analysis |               |         | Multivariable Analysis |               |         |
|--|---------------------|---------------|---------|------------------------|---------------|---------|
|  | HR                  | 95% CI        | p-Value | HR                     | 95% CI        | p-Value |
| <b>Donor Characteristics</b>   |                     |               |         |                        |               |         |
| MaS on Biopsy (per % steatosis)  | 1.007               | 1.002 – 1.012 | 0.006   | 1.007                  | 1.002 – 1.012 | 0.013   |
| Cause of Death   |                     |               | <0.001  |                        |               | 0.015   |
| Anoxia   | Reference           |               |         | Reference              |               |         |
| Trauma   | 1.204               | 0.973 – 1.490 |         | 1.257                  | 1.002 – 1.577 |         |
| Cerebrovascular Accident   | 1.433               | 1.202 – 1.710 |         | 1.358                  | 1.122 – 1.644 |         |
| Other  | 1.509               | 0.968 – 2.353 |         | 1.478                  | 0.925 – 2.363 |         |
| HCV-Positive   | 0.457               | 0.321 – 0.651 | <0.001  | 0.565                  | 1.223 – 2.557 | 0.002   |
| <b>Transplant Characteristics</b>  |                     |               |         |                        |               |         |
| Cold Ischemic Time (per hour)  |                     |               | <0.001  |                        |               | <0.001  |
| <4 Hours   | Reference           |               |         | Reference              |               |         |
| 4 to <6 Hours  | 1.328               | 0.950 – 1.855 |         | 1.342                  | 0.945 – 1.907 |         |
| 6 to <8 Hours  | 1.526               | 1.099 – 2.118 |         | 1.479                  | 1.046 – 2.091 |         |
| 8 to <10 Hours   | 1.805               | 1.290 – 2.526 |         | 1.694                  | 1.185 – 2.420 |         |
| 10 to >12 Hours  | 2.292               | 1.595 – 3.293 |         | 1.875                  | 1.263 – 2.783 |         |
| ≥12 Hours  | 2.511               | 1.681 – 3.753 |         | 2.327                  | 1.502 – 3.606 |         |
| <b>Recipient Characteristics</b>   |                     |               |         |                        |               |         |
| Body Mass Index (per kg/m <sup>2</sup> )   | 1.026               | 1.014 – 1.038 | <0.001  | 1.020                  | 1.007 – 1.032 | 0.002   |
| MELD-Na Score (per point)  | 1.024               | 1.018 – 1.031 | <0.001  | 1.026                  | 1.016 – 1.036 | <0.001  |
| Exception Points Awarded   |                     |               | <0.001  |                        |               | 0.003   |
| No Exception Points  | Reference           |               |         | Reference              |               |         |
| HCC Exception Points   | 0.652               | 0.549 – 0.774 |         | 1.170                  | 0.933 – 1.468 |         |
| Other Exception Points   | 0.988               | 0.789 – 1.236 |         | 1.602                  | 1.225 – 2.096 |         |
| Prior Abdominal Surgery  | 1.378               | 1.201 – 1.582 | <0.001  | 1.419                  | 1.225 – 1.643 | <0.001  |
| Portal Vein Thrombosis   | 1.867               | 1.552 – 2.246 | <0.001  | 1.806                  | 1.480 – 2.203 | <0.001  |
| On Mechanical Ventilation at Time of Transplant  | 3.274               | 2.612 – 4.102 | <0.001  | 2.826                  | 2.178 – 3.668 | <0.001  |
| *Year of transplant and UNOS region of transplant controlled for by inclusion in model |                     |               |         |                        |               |         |

Table S2C. 1-Year Allograft Survival (Test Population)

|  | Univariate Analysis |               |         | Multivariable Analysis |               |         |
|--|---------------------|---------------|---------|------------------------|---------------|---------|
|  | HR                  | 95% CI        | p-Value | HR                     | 95% CI        | p-Value |
| <b>Donor Characteristics</b>   |                     |               |         |                        |               |         |
| Age (per year)   | 1.011               | 1.007 – 1.014 | <0.001  | 1.007                  | 1.003 – 1.011 | <0.001  |
| Cause of Death   |                     |               | <0.001  |                        |               | 0.027   |
| Anoxia   | Reference           |               |         | Reference              |               |         |
| Trauma   | 1.083               | 0.927 – 1.266 |         | 1.136                  | 0.964 – 1.338 |         |
| Cerebrovascular Accident   | 1.315               | 1.158 – 1.494 |         | 1.200                  | 1.044 – 1.380 |         |
| Other  | 1.450               | 1.048 – 2.006 |         | 1.474                  | 1.051 – 2.069 |         |
| Hx of Diabetes   | 1.239               | 1.097 – 1.347 | <0.001  | 1.216                  | 1.070 – 1.382 | 0.003   |
| <b>Transplant Characteristics</b>  |                     |               |         |                        |               |         |
| Cold Ischemic Time (per hour)  |                     |               | <0.001  |                        |               | 0.002   |
| <4 Hours   | Reference           |               |         | Reference              |               |         |
| 4 to <6 Hours  | 1.260               | 0.999 – 1.587 |         | 1.190                  | 0.948 – 1.516 |         |
| 6 to <8 Hours  | 1.419               | 1.132 – 1.780 |         | 1.353                  | 1.074 – 1.705 |         |
| 8 to <10 Hours   | 1.399               | 1.130 – 1.773 |         | 1.318                  | 1.033 – 1.680 |         |
| 10 to >12 Hours  | 1.694               | 1.303 – 2.204 |         | 1.474                  | 1.121 – 1.939 |         |
| ≥12 Hours  | 1.972               | 1.471 – 2.643 |         | 1.800                  | 1.325 – 2.444 |         |
| <b>Recipient Characteristics</b>   |                     |               |         |                        |               |         |
| Age (per year)   | 1.007               | 1.002 – 1.013 | 0.010   | 1.013                  | 1.007 – 1.019 | <0.001  |
| Ethnicity  |                     |               | 0.023   |                        |               | 0.026   |
| White  | Reference           |               |         | Reference              |               |         |
| Black  | 1.220               | 1.038 – 1.435 |         | 1.292                  | 1.092 – 1.529 |         |
| Asian  | 0.785               | 0.590 – 1.045 |         | 0.941                  | 0.786 – 1.126 |         |
| Hispanic   | 0.921               | 0.779 – 1.089 |         | 0.897                  | 0.668 – 1.206 |         |
| Other  | 0.823               | 0.523 – 1.295 |         | 0.889                  | 0.563 – 1.404 |         |
| MELD-Na Score (per point)  | 1.017               | 1.012 – 1.024 | <0.001  | 1.023                  | 1.014 – 1.031 | <0.001  |
| Exception Points Awarded   |                     |               | 0.001   |                        |               | 0.003   |
| No Exception Points  | Reference           |               |         | Reference              |               |         |
| HCC Exception Points   | 0.800               | 0.709 – 0.902 |         | 1.197                  | 1.018 – 1.408 |         |
| Other Exception Points   | 0.938               | 0.789 – 1.116 |         | 1.407                  | 1.152 – 1.719 |         |
| EBV-Positive   | 0.916               | 0.825 – 1.016 | 0.09    | 0.831                  | 0.739 – 0.934 | 0.002   |
| Prior Abdominal Surgery  | 1.295               | 1.170 – 1.434 | <0.001  | 1.311                  | 1.179 – 1.457 | <0.001  |
| Portal Vein Thrombosis   | 1.625               | 1.407 – 1.877 | <0.001  | 1.662                  | 1.430 – 1.933 | <0.001  |
| On Mechanical Ventilation at Time of Transplant  | 2.480               | 2.050 – 2.999 | <0.001  | 2.155                  | 1.733 – 2.678 | <0.001  |
| On Dialysis Within Week Prior to Transplant  | 1.603               | 1.353 – 1.900 | <0.001  | 1.276                  | 1.039 – 1.566 | 0.020   |
| *Year of transplant and UNOS region of transplant controlled for by inclusion in model |                     |               |         |                        |               |         |

Table S2D. 3-Year Allograft Survival (Test Population)

|  | Univariate Analysis |               |         | Multivariable Analysis |               |         |
|--|---------------------|---------------|---------|------------------------|---------------|---------|
|  | HR                  | 95% CI        | p-Value | HR                     | 95% CI        | p-Value |
| <b>Donor Characteristics</b>   |                     |               |         |                        |               |         |
| Age (per year)   | 1.010               | 1.001 – 1.013 | <0.001  | 1.009                  | 1.006 – 1.013 | <0.001  |
| Cause of Death   |                     |               | <0.001  |                        |               | 0.017   |
| Anoxia   | Reference           |               |         | Reference              |               |         |
| Trauma   | 1.112               | 0.983 – 1.258 |         | 1.174                  | 1.031 – 1.336 |         |
| Cerebrovascular Accident   | 1.294               | 1.168 – 1.433 |         | 1.188                  | 1.063 – 1.328 |         |
| Other  | 1.164               | 0.875 – 1.548 |         | 1.251                  | 0.931 – 1.680 |         |
| Hx of Diabetes   | 1.220               | 1.107 – 1.345 | <0.001  | 1.181                  | 1.066 – 1.309 | 0.001   |
| <b>Procurement Characteristics</b>   |                     |               |         |                        |               |         |
| Cold Ischemic Time (per hour)  |                     |               | <0.001  |                        |               | <0.001  |
| <4 Hours   | Reference           |               |         | Reference              |               |         |
| 4 to <6 Hours  | 1.115               | 0.935 – 1.329 |         | 1.070                  | 0.894 – 1.280 |         |
| 6 to <8 Hours  | 1.255               | 1.057 – 1.491 |         | 1.205                  | 1.010 – 1.437 |         |
| 8 to <10 Hours   | 1.240               | 1.035 – 1.486 |         | 1.193                  | 0.991 – 1.436 |         |
| 10 to >12 Hours  | 1.432               | 1.169 – 1.755 |         | 1.300                  | 1.053 – 1.607 |         |
| ≥12 Hours  | 1.610               | 1.278 – 2.028 |         | 1.523                  | 1.196 – 1.940 |         |
| <b>Recipient Characteristics</b>   |                     |               |         |                        |               |         |
| Age (per year)   | 1.005               | 1.000 – 1.009 | 0.040   | 1.005                  | 1.000 – 1.011 | 0.032   |
| Ethnicity  |                     |               | <0.001  |                        |               | <0.001  |
| White  | Reference           |               |         | Reference              |               |         |
| Black  | 1.409               | 1.244 – 1.596 |         | 1.389                  | 1.218 – 1.584 |         |
| Asian  | 0.751               | 0.594 – 0.950 |         | 1.010                  | 0.879 – 1.161 |         |
| Hispanic   | 1.037               | 0.911 – 1.180 |         | 0.832                  | 0.649 – 1.067 |         |
| Other  | 0.794               | 0.547 – 1.154 |         | 0.862                  | 0.592 – 1.256 |         |
| MELD-Na Score (per point)  | 1.008               | 1.004 – 1.012 | <0.001  | 1.015                  | 1.009 – 1.020 | <0.001  |
| Etiology of ESLD   |                     |               | <0.001  |                        |               | <0.001  |
| Acute Liver Failure  | Reference           |               |         | Reference              |               |         |
| NASH/CC  | 0.839               | 0.652 – 1.080 |         | 1.031                  | 0.777 – 1.368 |         |
| Alcohol  | 0.732               | 0.547 – 0.945 |         | 0.895                  | 0.676 – 1.186 |         |
| Hepatitis C Virus  | 1.046               | 0.828 – 1.322 |         | 1.404                  | 1.083 – 1.821 |         |
| Hepatitis B Virus  | 0.621               | 0.396 – 0.974 |         | 0.862                  | 0.536 – 1.389 |         |
| Hepatocellular Carcinoma   | 0.986               | 0.780 – 1.246 |         | 1.438                  | 1.097 – 1.888 |         |
| Cholestatic Disease  | 0.723               | 0.546 – 0.957 |         | 0.962                  | 0.711 – 1.302 |         |
| Congenital/Metabolic Disease   | 0.790               | 0.561 – 1.111 |         | 1.004                  | 0.697 – 1.445 |         |
| Cirrhosis (NOS)  | 0.947               | 0.705 – 1.273 |         | 1.131                  | 0.823 – 1.554 |         |
| EBV-Positive   | 0.929               | 0.855 – 1.009 | 0.08    | 0.887                  | 0.808 – 0.974 | 0.012   |
| Prior Malignancy   | 1.107               | 1.001 – 1.225 | 0.048   | 1.137                  | 1.017 – 1.272 | 0.025   |
| Prior TIPS   | 1.154               | 1.009 – 1.320 | 0.037   | 1.173                  | 1.022 – 1.348 | 0.024   |
| Prior Abdominal Surgery  | 1.192               | 1.099 – 1.293 | <0.001  | 1.215                  | 1.116 – 1.323 | <0.001  |
| Portal Vein Thrombosis   | 1.336               | 1.179 – 1.514 | <0.001  | 1.355                  | 1.189 – 1.544 | <0.001  |
| On Mechanical Ventilation at Time of Transplant  | 1.936               | 1.632 – 2.297 | <0.001  | 1.966                  | 1.617 – 2.391 | <0.001  |
| *Year of transplant and UNOS region of transplant controlled for by inclusion in model |                     |               |         |                        |               |         |



Table S3A. Combined Model In Test and Validate Populations (30-Day Graft Survival)

|  | Test      |               |         | Validate  |               |         |
|--|-----------|---------------|---------|-----------|---------------|---------|
|  | HR        | 95% CI        | p-Value | HR        | 95% CI        | p-Value |
| <b>Donor Characteristics</b>   |           |               |         |           |               |         |
| Age (per year)   | 1.003     | 0.997 – 1.010 | 0.31    | 1.003     | 0.992 – 1.015 | 0.58    |
| MaS on Biopsy (per % steatosis)  | 1.010     | 1.004 – 1.016 | <0.001  | 1.014     | 1.005 – 1.024 | 0.003   |
| Cause of Death   |           |               | 0.12    |           |               | 0.23    |
| Anoxia   | Reference |               |         | Reference |               |         |
| Trauma   | 1.328     | 1.015 – 1.739 |         | 1.115     | 0.687 – 1.808 |         |
| Cerebrovascular Accident   | 1.192     | 0.938 – 1.515 |         | 1.458     | 0.972 – 2.186 |         |
| Other  | 1.634     | 0.949 – 2.815 |         | 0.894     | 0.273 – 2.931 |         |
| Hx of Diabetes   | 1.186     | 0.949 – 1.481 | 0.13    | 1.036     | 0.708 – 1.517 | 0.85    |
|  |           |               |         |           |               |         |
| <b>Procurement Characteristics</b>   |           |               |         |           |               |         |
| Cold Ischemic Time (per hour)  |           |               | <0.001  |           |               | 0.002   |
| <4 Hours   | Reference |               |         | Reference |               |         |
| 4 to <6 Hours  | 1.391     | 0.895 – 2.161 |         | 1.268     | 0.588 – 2.733 |         |
| 6 to <8 Hours  | 1.527     | 0.987 – 2.360 |         | 1.713     | 0.813 – 3.608 |         |
| 8 to <10 Hours   | 1.926     | 1.234 – 3.004 |         | 1.887     | 0.873 – 4.079 |         |
| 10 to >12 Hours  | 1.940     | 1.184 – 3.178 |         | 2.506     | 1.092 – 5.749 |         |
| ≥12 Hours  | 2.858     | 1.682 – 4.856 |         | 4.042     | 1.709 – 9.560 |         |
|  |           |               |         |           |               |         |
| <b>Recipient Characteristics</b>   |           |               |         |           |               |         |
| Age (per year)   | 1.002     | 0.993 – 1.012 | 0.66    | 1.013     | 0.996 – 1.030 | 0.14    |
| Body Mass Index (per kg/m <sup>2</sup> )   | 1.023     | 1.008 – 1.039 | 0.002   | 1.042     | 1.017 – 1.067 | <0.001  |
| Ethnicity  |           |               | 0.26    |           |               | 0.03    |
| White  | Reference |               |         | Reference |               |         |
| Black  | 1.224     | 0.908 – 1.650 |         | 1.831     | 1.176 – 2.851 |         |
| Hispanic   | 1.077     | 0.804 – 1.443 |         | 0.844     | 0.483 – 1.475 |         |
| Asian  | 1.473     | 0.951 – 2.282 |         | 1.770     | 0.872 – 3.591 |         |
| Other  | 0.720     | 0.320 – 1.621 |         | 0.488     | 0.067 – 3.540 |         |
| MELD-Na Score (per point)  | 1.020     | 1.007 – 1.034 | 0.003   | 1.019     | 0.997 – 1.041 | 0.09    |
| Exception Points Awarded   |           |               | 0.001   |           |               | 0.46    |
| No Exception Points  | Reference |               |         | Reference |               |         |
| HCC Exception Points   | 1.201     | 0.909 – 1.587 |         | 1.064     | 0.673 – 1.681 |         |
| Other Exception Points   | 1.818     | 1.321 – 2.500 |         | 1.405     | 0.816 – 2.420 |         |
| EBV-Positive   | 0.895     | 0.730 – 1.098 | 0.29    | 0.961     | 0.688 – 1.344 | 0.82    |
| Prior Abdominal Surgery  | 1.447     | 1.209 – 1.732 | <0.001  | 1.344     | 0.995 – 1.815 | 0.05    |
| Portal Vein Thrombosis   | 2.052     | 1.627 – 2.587 | <0.001  | 1.753     | 1.159 – 2.652 | 0.008   |
| On Mechanical Ventilation at Time of Transplant  | 3.759     | 2.774 – 5.093 | <0.001  | 2.299     | 1.294 – 4.083 | 0.005   |
|  |           |               |         |           |               |         |
| *Year of transplant and UNOS region of transplant controlled for by inclusion in model |           |               |         |           |               |         |

Table S3B. Combined Model In Test and Validate Populations (90-Day Graft Survival)

|  | Test      |               |         | Validate  |               |         |
|--|-----------|---------------|---------|-----------|---------------|---------|
|  | HR        | 95% CI        | p-Value | HR        | 95% CI        | p-Value |
| <b>Donor Characteristics</b>   |           |               |         |           |               |         |
| Age (per year)   | 1.004     | 0.999 – 1.010 | 0.12    | 1.009     | 1.000 – 1.019 | 0.044   |
| MaS on Biopsy (per % steatosis)  | 1.007     | 1.002 – 1.013 | 0.005   | 1.012     | 1.005 – 1.021 | 0.002   |
| Cause of Death   |           |               | 0.02    |           |               | 0.18    |
| Anoxia   | Reference |               |         | Reference |               |         |
| Trauma   | 1.298     | 1.032 – 1.632 |         | 0.975     | 0.662 – 1.436 |         |
| Cerebrovascular Accident   | 1.328     | 1.087 – 1.622 |         | 1.320     | 0.962 – 1.810 |         |
| Other  | 1.569     | 0.981 – 2.509 |         | 1.252     | 0.567 – 2.764 |         |
| Hx of Diabetes   | 1.166     | 0.971 – 1.400 | 0.10    | 1.063     | 0.793 – 1.424 | 0.68    |
| <b>Procurement Characteristics</b>   |           |               |         |           |               |         |
| Cold Ischemic Time (per hour)  |           |               | <0.001  |           |               | <0.001  |
| <4 Hours   | Reference |               |         | Reference |               |         |
| 4 to <6 Hours  | 1.322     | 0.930 – 1.880 |         | 1.345     | 0.739 – 2.448 |         |
| 6 to <8 Hours  | 1.495     | 1.056 – 2.115 |         | 1.678     | 0.934 – 3.014 |         |
| 8 to <10 Hours   | 1.733     | 1.212 – 2.477 |         | 2.098     | 1.149 – 3.830 |         |
| 10 to >12 Hours  | 1.923     | 1.295 – 2.857 |         | 2.194     | 1.125 – 4.278 |         |
| ≥12 Hours  | 2.327     | 1.497 – 3.617 |         | 4.009     | 2.024 – 7.942 |         |
| <b>Recipient Characteristics</b>   |           |               |         |           |               |         |
| Age (per year)   | 1.006     | 0.998 – 1.014 | 0.14    | 1.021     | 1.007 – 1.035 | 0.003   |
| Body Mass Index (per kg/m <sup>2</sup> )   | 1.020     | 1.007 – 1.032 | 0.002   | 1.026     | 1.006 – 1.046 | 0.010   |
| Ethnicity  |           |               | 0.44    |           |               | 0.10    |
| White  | Reference |               |         | Reference |               |         |
| Black  | 1.183     | 0.927 – 1.510 |         | 1.490     | 1.027 – 2.161 |         |
| Hispanic   | 1.010     | 0.790 – 1.291 |         | 1.014     | 0.679 – 1.515 |         |
| Asian  | 1.113     | 0.742 – 1.670 |         | 1.536     | 0.873 – 2.701 |         |
| Other  | 0.638     | 0.316 – 1.288 |         | 0.295     | 0.041 – 2.121 |         |
| MELD-Na Score (per point)  | 1.028     | 1.017 – 1.039 | <0.001  | 1.038     | 1.020 – 1.055 | <0.001  |
| Exception Points Awarded   |           |               | 0.002   |           |               | 0.005   |
| No Exception Points  | Reference |               |         | Reference |               |         |
| HCC Exception Points   | 1.154     | 0.915 – 1.455 |         | 1.384     | 0.967 – 1.982 |         |
| Other Exception Points   | 1.642     | 1.252 – 2.154 |         | 1.976     | 1.310 – 2.981 |         |
| EBV-Positive   | 0.879     | 0.744 – 1.038 | 0.13    | 1.047     | 0.802 – 1.366 | 0.74    |
| Prior Abdominal Surgery  | 1.421     | 1.225 – 1.647 | <0.001  | 1.117     | 0.882 – 1.416 | 0.36    |
| Portal Vein Thrombosis   | 1.785     | 1.462 – 2.180 | <0.001  | 1.839     | 1.332 – 2.540 | <0.001  |
| On Mechanical Ventilation at Time of Transplant  | 3.049     | 2.347 – 3.961 | <0.001  | 2.608     | 1.690 – 4.024 | <0.001  |
| *Year of transplant and UNOS region of transplant controlled for by inclusion in model |           |               |         |           |               |         |

Table S3C. Combined Model In Test and Validate Populations (1-Year Graft Survival)

|  | Test      |               |         | Validate  |               |         |
|--|-----------|---------------|---------|-----------|---------------|---------|
|  | HR        | 95% CI        | p-Value | HR        | 95% CI        | p-Value |
| <b>Donor Characteristics</b>   |           |               |         |           |               |         |
| Age (per year)   | 1.006     | 1.002 – 1.010 | 0.003   | 1.007     | 1.001 – 1.014 | 0.029   |
| MaS on Biopsy<br>(per % steatosis)   | 1.003     | 0.998 – 1.007 | 0.24    | 1.009     | 1.003 – 1.015 | 0.003   |
| Cause of Death   |           |               | 0.019   |           |               | 0.005   |
| Anoxia   | Reference |               |         | Reference |               |         |
| Trauma   | 1.160     | 0.980 – 1.373 |         | 0.926     | 0.701 – 1.224 |         |
| Cerebrovascular Accident   | 1.222     | 1.057 – 1.413 |         | 1.340     | 1.070 – 1.678 |         |
| Other  | 1.502     | 1.056 – 2.138 |         | 0.857     | 0.447 – 1.642 |         |
| Hx of Diabetes   | 1.176     | 1.029 – 1.345 | 0.017   | 1.230     | 0.913 – 1.381 | 0.271   |
| <b>Procurement Characteristics</b>   |           |               |         |           |               |         |
| Cold Ischemic Time (per hour)  |           |               | 0.049   |           |               | 0.001   |
| <4 Hours   | Reference |               |         | Reference |               |         |
| 4 to <6 Hours  | 1.230     | 0.965 – 1.568 |         | 1.091     | 0.751 – 1.585 |         |
| 6 to <8 Hours  | 1.352     | 1.063 – 1.718 |         | 1.361     | 0.946 – 1.958 |         |
| 8 to <10 Hours   | 1.328     | 1.032 – 1.708 |         | 1.372     | 0.934 – 2.016 |         |
| 10 to >12 Hours  | 1.404     | 1.055 – 1.869 |         | 1.371     | 0.878 – 2.140 |         |
| ≥12 Hours  | 1.636     | 1.184 – 2.261 |         | 2.401     | 1.508 – 3.822 |         |
| <b>Recipient Characteristics</b>   |           |               |         |           |               |         |
| Age (per year)   | 1.014     | 1.007 – 1.020 | <0.001  | 1.023     | 1.013 – 1.033 | <0.001  |
| Body Mass Index (per kg/m <sup>2</sup> )   | 1.005     | 0.996 – 1.015 | 0.29    | 1.012     | 0.997 – 1.026 | 0.119   |
| Ethnicity  |           |               | 0.031   |           |               | 0.003   |
| White  | Reference |               |         | Reference |               |         |
| Black  | 1.314     | 1.104 – 1.563 |         | 1.648     | 1.273 – 2.133 |         |
| Hispanic   | 0.976     | 0.812 – 1.174 |         | 1.100     | 0.832 – 1.456 |         |
| Asian  | 0.907     | 0.665 – 1.238 |         | 1.181     | 0.768 – 1.814 |         |
| Other  | 0.925     | 0.586 – 1.461 |         | 0.587     | 0.217 – 1.586 |         |
| MELD-Na Score (per point)  | 1.026     | 1.018 – 1.035 |         | 1.031     | 1.018 – 1.044 | <0.001  |
| Exception Points Awarded   |           |               | 0.001   |           |               | 0.001   |
| No Exception Points  | Reference |               |         | Reference |               |         |
| HCC Exception Points   | 1.245     | 1.054 – 1.471 |         | 1.439     | 1.116 – 1.855 |         |
| Other Exception Points   | 1.445     | 1.174 – 1.779 |         | 1.728     | 1.726 – 2.341 |         |
| EBV-Positive   | 0.848     | 0.751 – 0.958 | 0.008   | 0.975     | 0.807 – 1.178 | 0.792   |
| Prior Abdominal Surgery  | 1.311     | 1.175 – 1.463 | <0.001  | 1.177     | 0.994 – 1.394 | 0.059   |
| Portal Vein Thrombosis   | 1.684     | 1.443 – 1.965 | <0.001  | 1.378     | 1.066 – 1.782 | 0.014   |
| On Mechanical Ventilation at<br>Time of Transplant                                     | 2.360     | 1.899 – 2.935 | <0.001  | 2.516     | 1.816 – 3.488 | <0.001  |
| *Year of transplant and UNOS region of transplant controlled for by inclusion in model |           |               |         |           |               |         |

Table S3D. Combined Model In Test and Validate Populations (3-Year Graft Survival)

|  | Test      |               |         | Validate  |               |         |
|--|-----------|---------------|---------|-----------|---------------|---------|
|  | HR        | 95% CI        | p-Value | HR        | 95% CI        | p-Value |
| <b>Donor Characteristics</b>   |           |               |         |           |               |         |
| Age (per year)   | 1.007     | 1.004 – 1.010 | <0.001  | 1.006     | 1.001 – 1.012 | 0.015   |
| MaS on Biopsy<br>(per % steatosis)   | 1.001     | 0.998 – 1.005 | 0.540   | 1.007     | 1.002 – 1.012 | 0.005   |
| Cause of Death   |           |               | 0.022   |           |               | 0.004   |
| Anoxia   | Reference |               |         | Reference |               |         |
| Trauma   | 1.165     | 1.019 – 1.331 |         | 1.043     | 0.840 – 1.296 |         |
| Cerebrovascular Accident   | 1.192     | 1.063 – 1.338 |         | 1.336     | 1.115 – 1.602 |         |
| Other  | 1.223     | 0.899 – 1.663 |         | 0.991     | 0.608 – 1.616 |         |
| Hx of Diabetes   | 1.161     | 1.044 – 1.292 | 0.006   | 1.121     | 0.949 – 1.324 | 0.178   |
| <b>Procurement Characteristics</b>   |           |               |         |           |               |         |
| Cold Ischemic Time (per hour)  |           |               | 0.024   |           |               | <0.001  |
| <4 Hours   | Reference |               |         | Reference |               |         |
| 4 to <6 Hours  | 1.077     | 0.896 – 1.296 |         | 1.077     | 0.803 – 1.446 |         |
| 6 to <8 Hours  | 1.194     | 0.996 – 1.432 |         | 1.319     | 0.990 – 1.757 |         |
| 8 to <10 Hours   | 1.212     | 1.001 – 1.467 |         | 1.397     | 1.034 – 1.889 |         |
| 10 to >12 Hours  | 1.259     | 1.012 – 1.568 |         | 1.394     | 0.985 – 1.976 |         |
| ≥12 Hours  | 1.443     | 1.225 – 1.854 |         | 2.114     | 1.452 – 3.078 |         |
| <b>Recipient Characteristics</b>   |           |               |         |           |               |         |
| Age (per year)   | 1.007     | 1.002 – 1.012 | 0.006   | 1.014     | 1.006 – 1.022 | <0.001  |
| Body Mass Index (per kg/m <sup>2</sup> )   | 0.999     | 0.992 – 1.007 | 0.878   | 1.005     | 0.993 – 1.017 | 0.450   |
| Ethnicity  |           |               | <0.001  |           |               | 0.001   |
| White  | Reference |               |         | Reference |               |         |
| Black  | 1.454     | 1.271 – 1.664 |         | 1.526     | 1.236 – 1.883 |         |
| Hispanic   | 1.042     | 0.903 – 1.202 |         | 1.007     | 0.799 – 1.270 |         |
| Asian  | 0.800     | 0.623 – 1.027 |         | 1.037     | 0.727 – 1.478 |         |
| Other  | 0.899     | 0.617 – 1.310 |         | 0.565     | 0.251 – 1.271 |         |
| MELD-Na Score (per point)  | 1.018     | 1.011 – 1.024 | <0.001  | 1.018     | 1.008 – 1.028 |         |
| Exception Points Awarded   |           |               | <0.001  |           |               | 0.006   |
| No Exception Points  | Reference |               |         | Reference |               |         |
| HCC Exception Points   | 1.373     | 1.207 – 1.563 |         | 1.356     | 1.111 – 1.656 |         |
| Other Exception Points   | 1.292     | 1.091 – 1.531 |         | 1.333     | 1.036 – 1.716 |         |
| EBV-Positive   | 0.910     | 0.826 – 1.003 | 0.057   | 0.981     | 0.843 – 1.141 | 0.801   |
| Prior Abdominal Surgery  | 1.220     | 1.118 – 1.331 | <0.001  | 1.159     | 1.012 – 1.327 | 0.033   |
| Portal Vein Thrombosis   | 1.395     | 1.221 – 1.593 | <0.001  | 1.286     | 1.040 – 1.590 | 0.020   |
| On Mechanical Ventilation at<br>Time of Transplant                                     | 1.965     | 1.621 – 2.383 | <0.001  | 2.366     | 1.786 – 3.134 | <0.001  |
| *Year of transplant and UNOS region of transplant controlled for by inclusion in model |           |               |         |           |               |         |

Figure S1.

Figure S1. 3-Year Allograft Survival in Test and Validate Cohorts

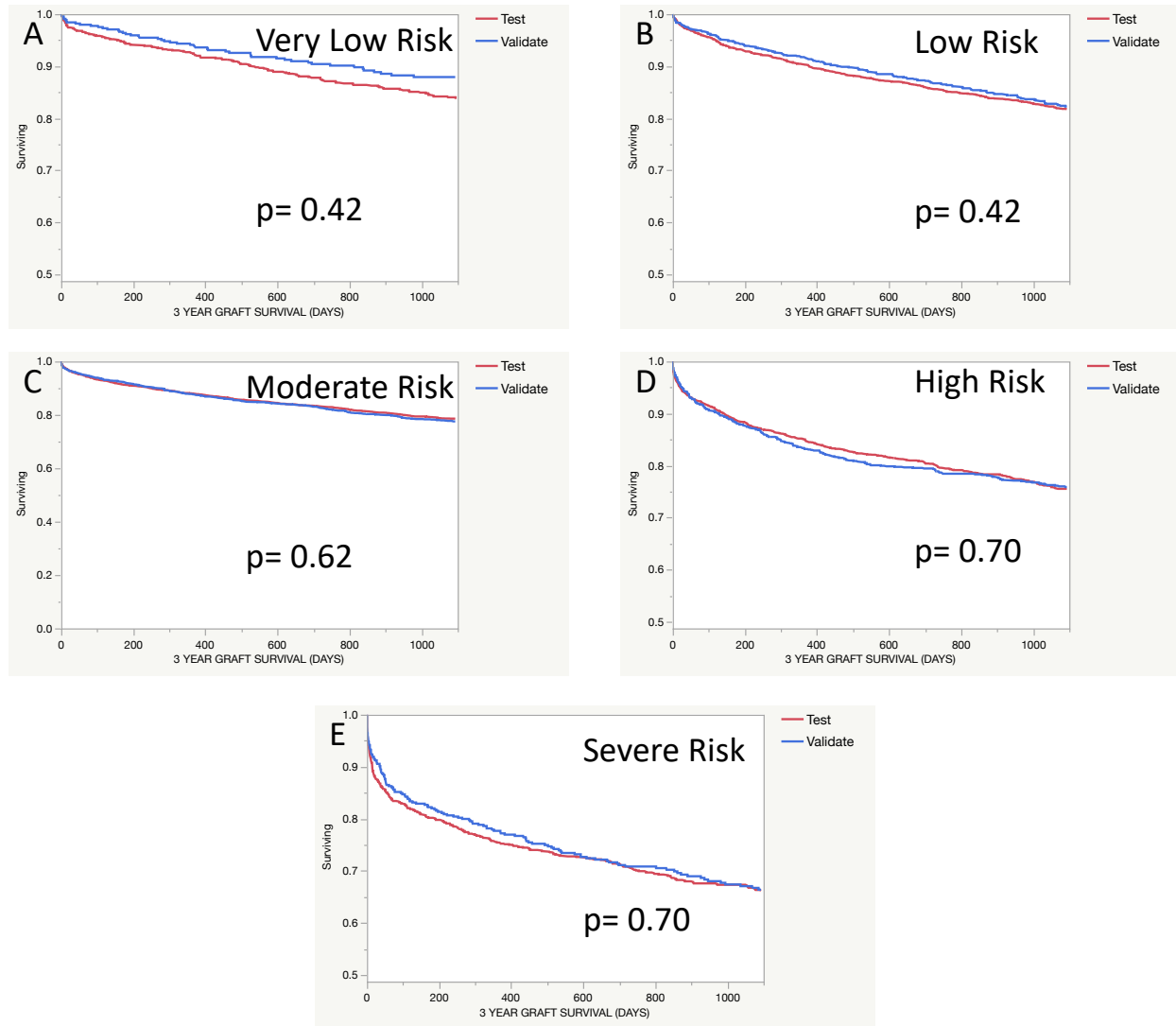


Figure S1. Three-year allograft survival in Test and Validate Cohorts. Kaplan-Meier survival curves evaluated graft survival between Test and Validate cohorts within LTAB Risk Groups. No significant differences in graft survival were identified between cohorts within each risk group.

Figure S2.

Figure S2. Distribution of Mini-LTAB Scores in Test and Validate Cohorts

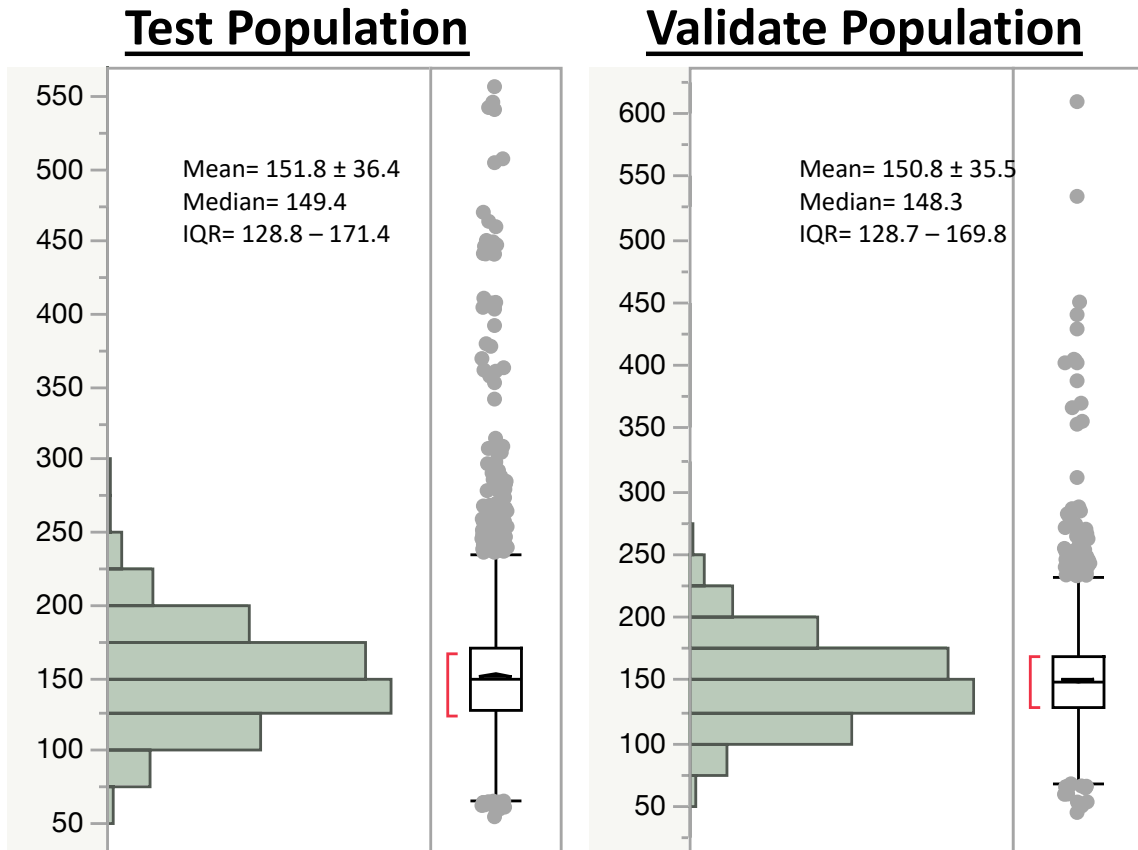


Figure S2. Distribution of Mini-LTAB Scores in Test and Validate Cohorts. Histograms depict the distribution of Mini-LTAB scores in Test and Validate cohorts. Means, medians, and interquartile ranges (IQR) are reported.

Figure S3.

Figure S3. Cross-Over Between LTAB and Mini-LTAB Risk Groups

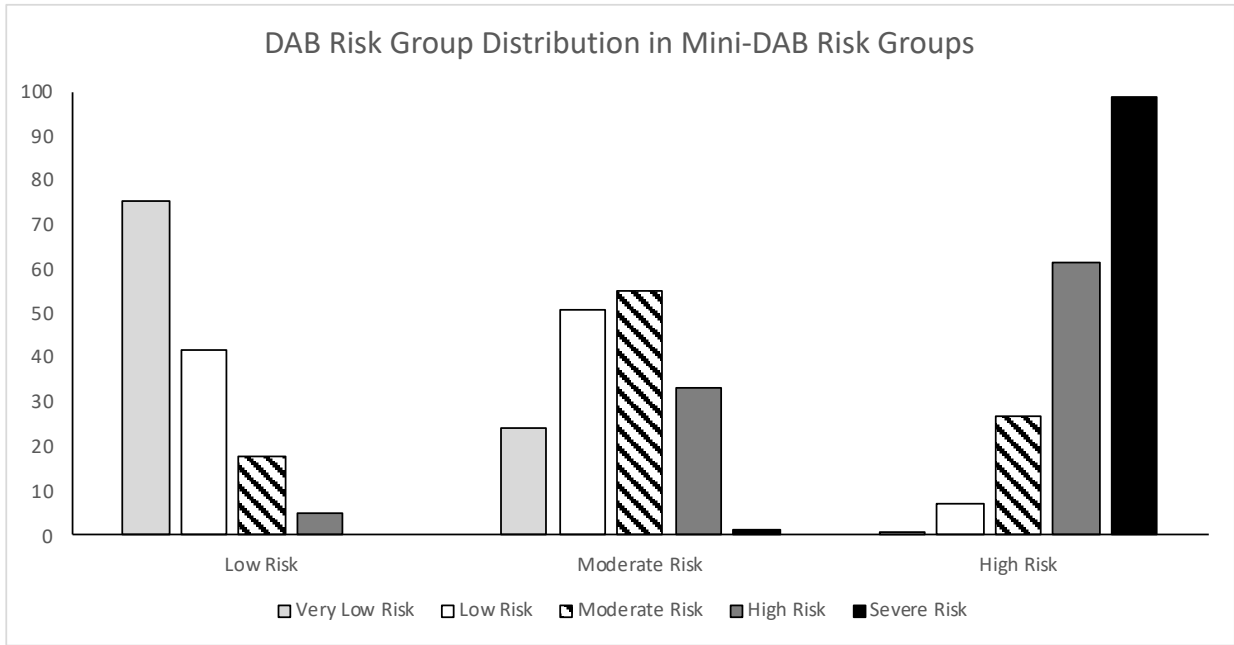


Figure S3. Cross-Over Between LTAB and Mini-LTAB Risk Groups. The percent of transplants within each LTAB risk groups were re-grouped by their Mini-LTAB risk group.

Figure S4.

Figure S1. Receiver Operator Curves for Scoring Systems in Transplant

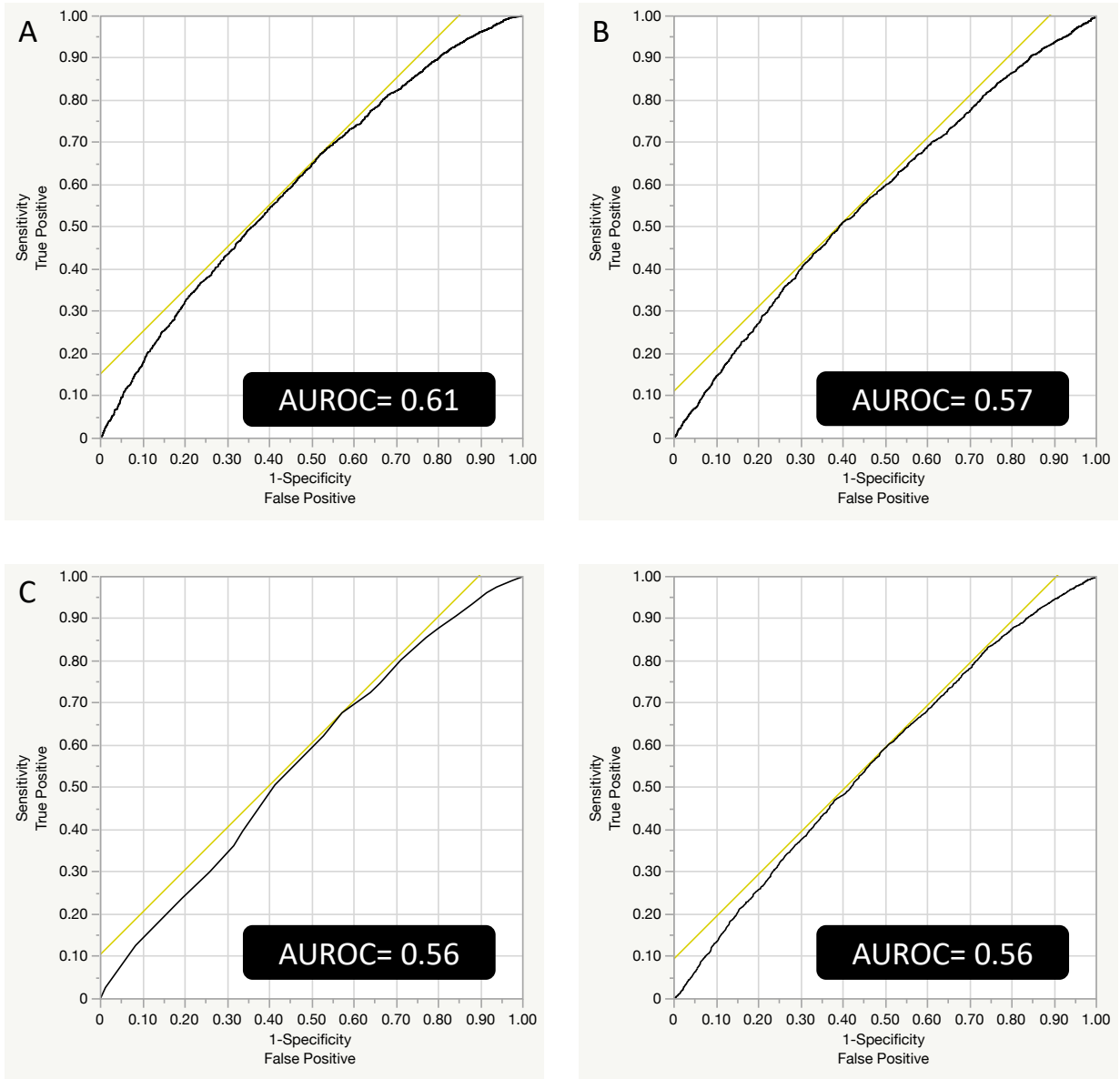


Figure S4. Area under receiver operator curves for multiple predictive scores in liver transplant outcomes. ROC are depicted for A) LTAB score, B) mini-LTAB score, C) BAR score, and D) Donor-MELD score, and AUROC are reported for all.