

Co-localization of KCC2/S940 and TrkB/Y816

Example blots showing R/G channel colocalization

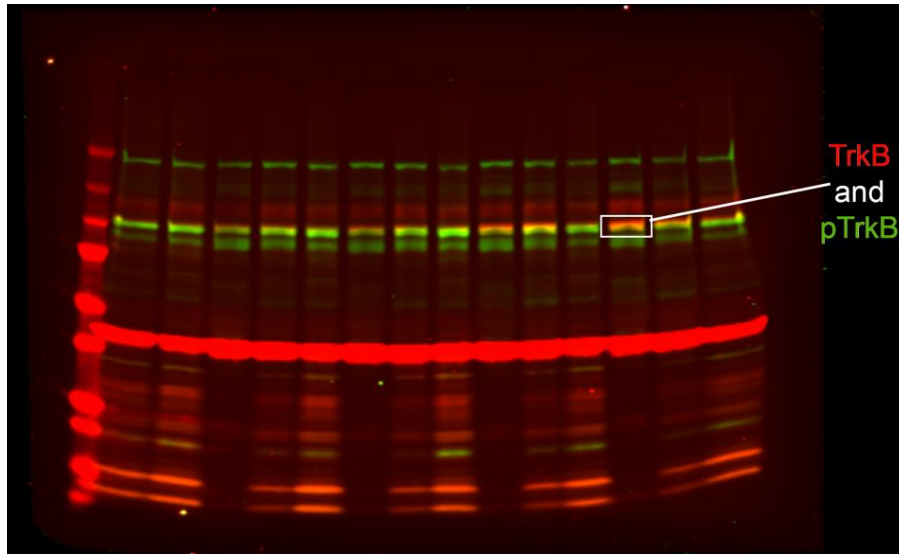
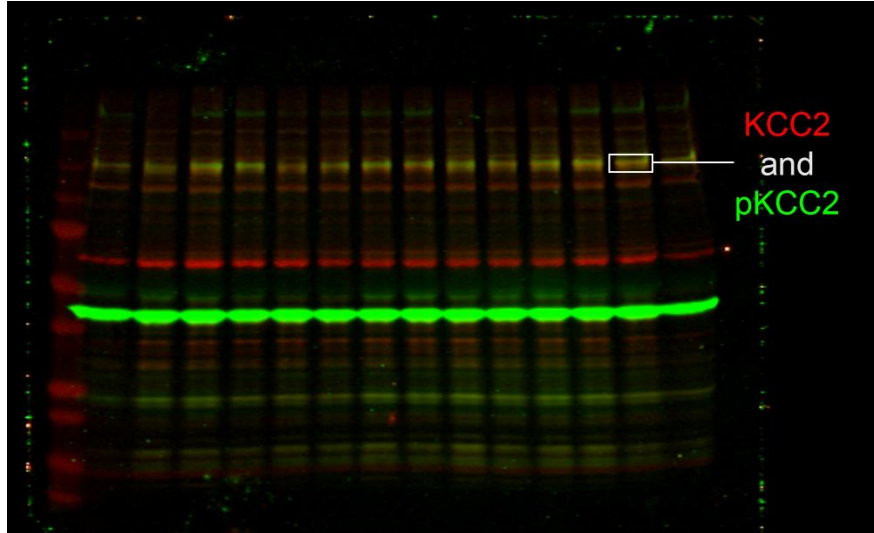
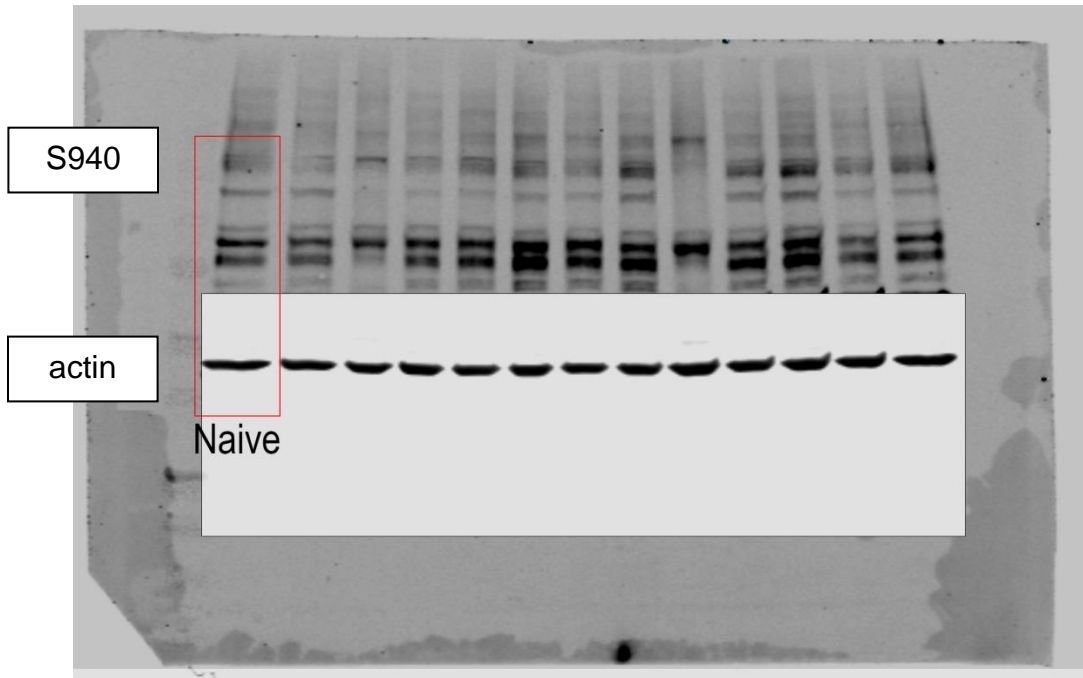
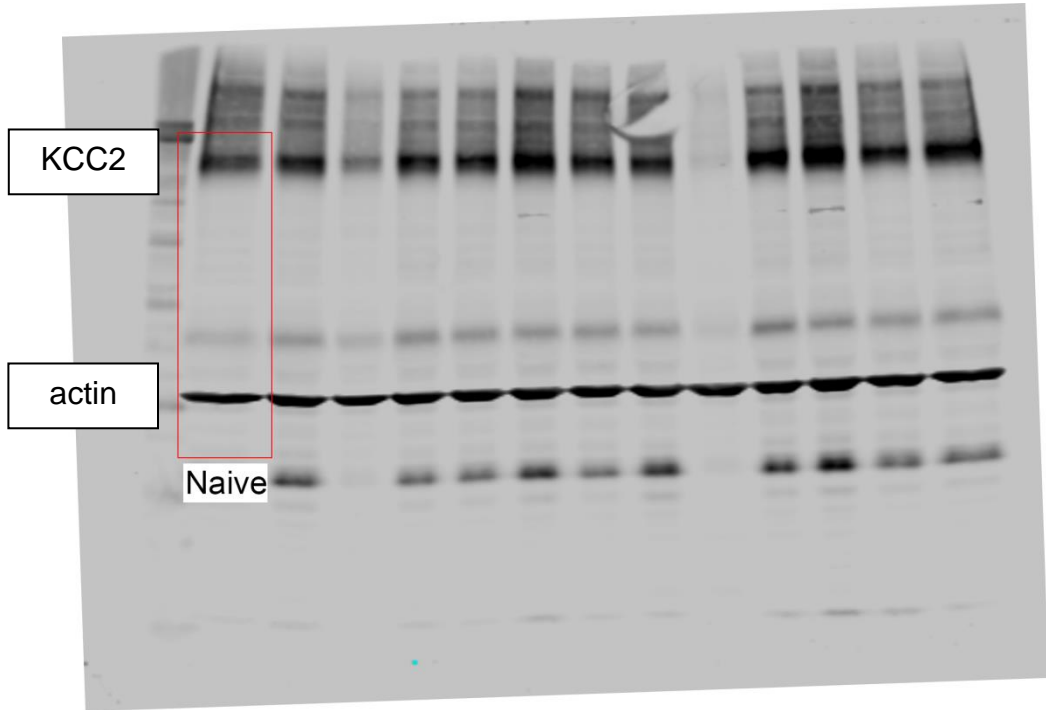
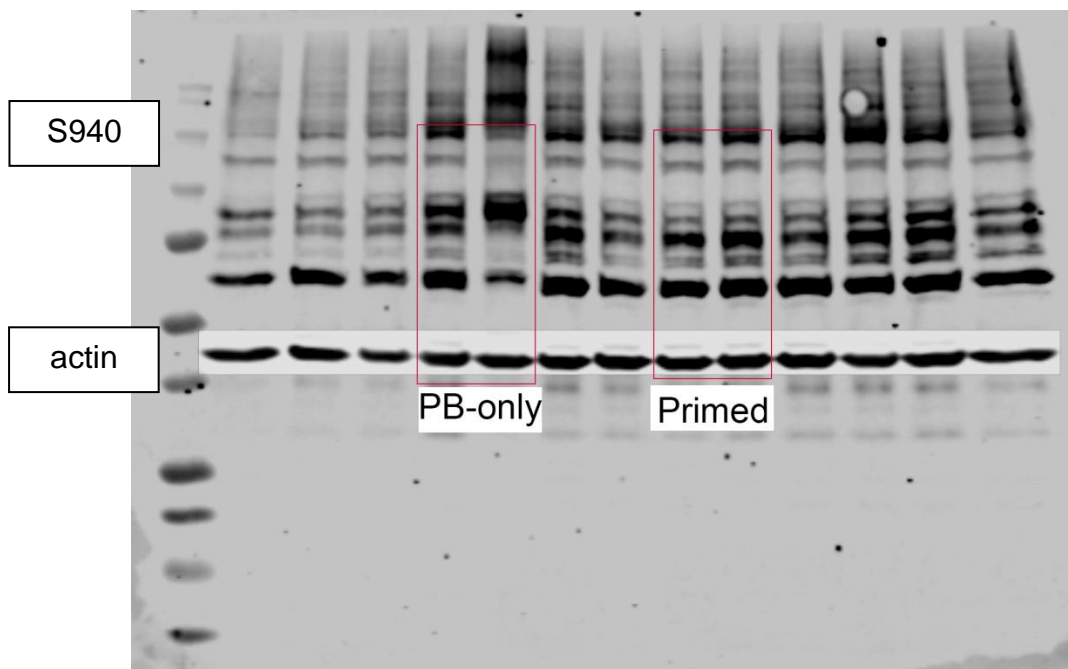
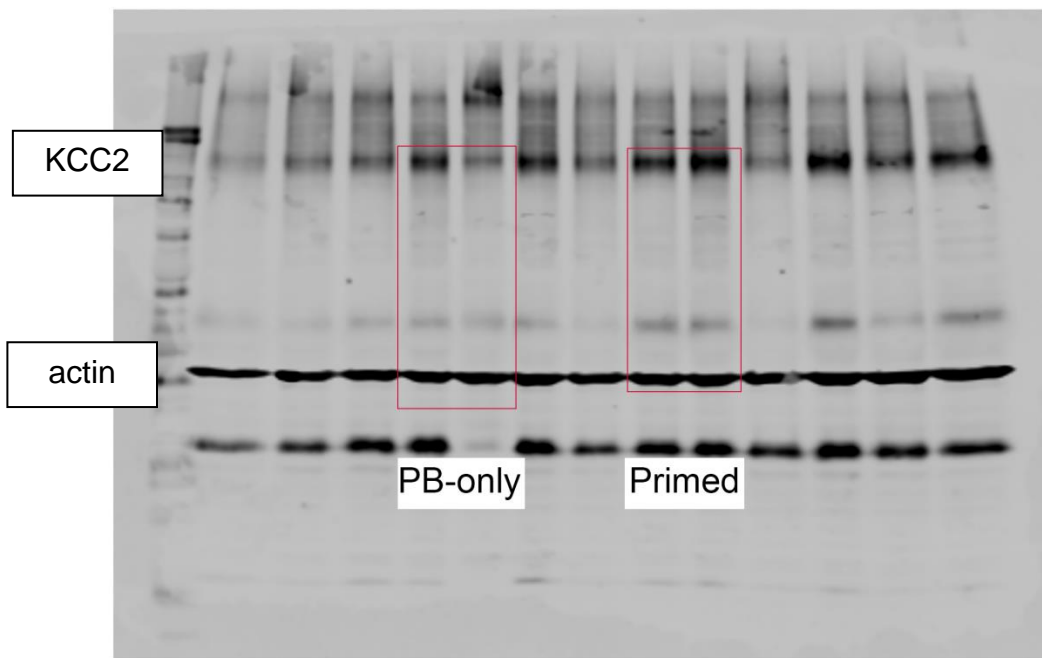


Figure 6

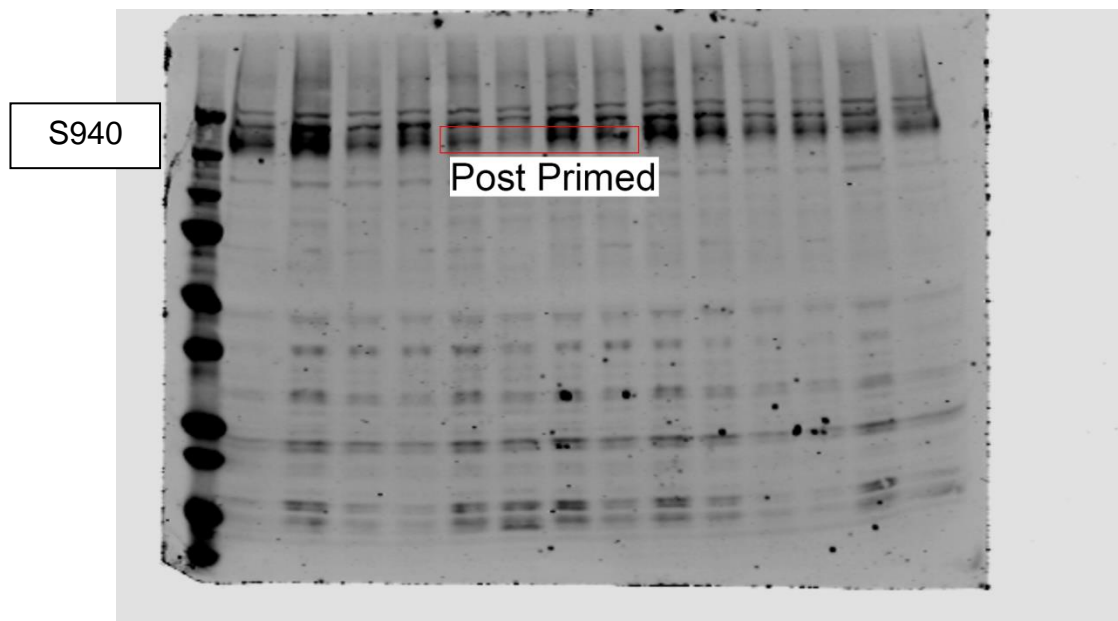
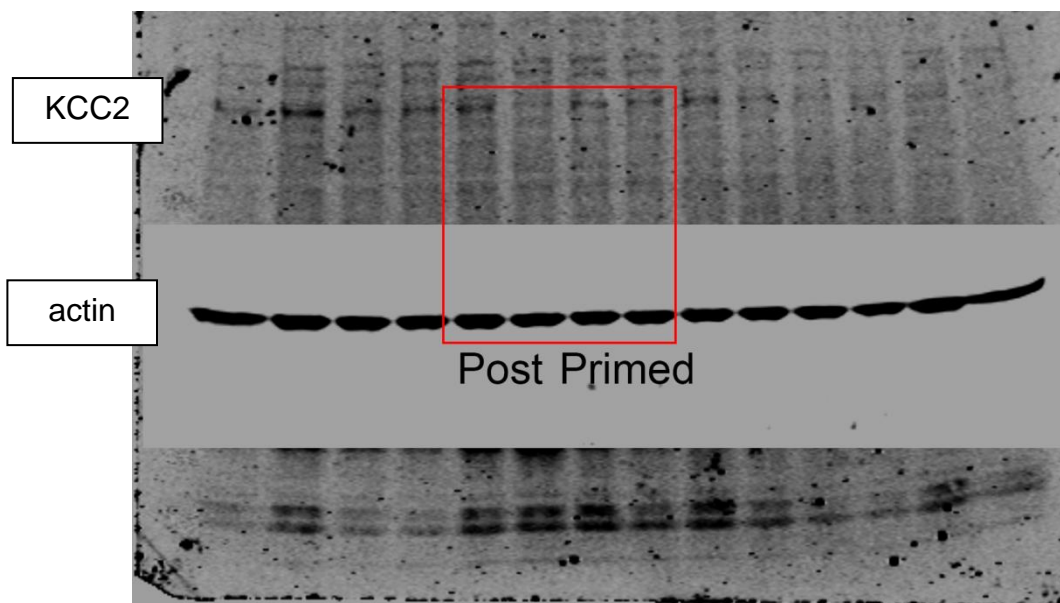
P7 Naïve KCC2, S940, and Actin



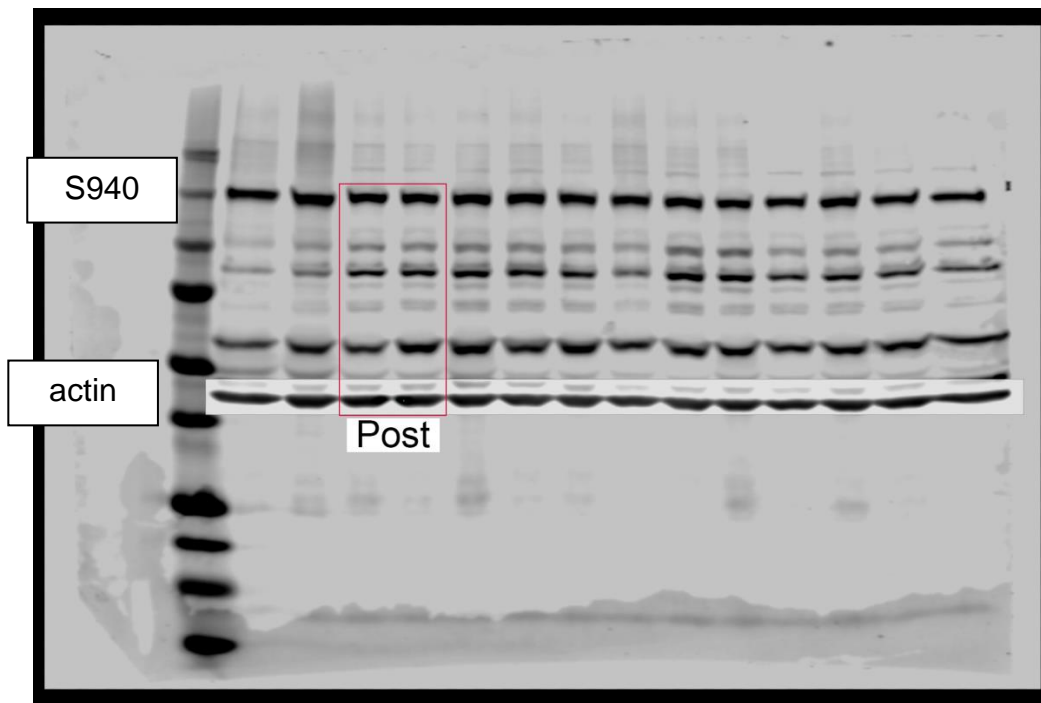
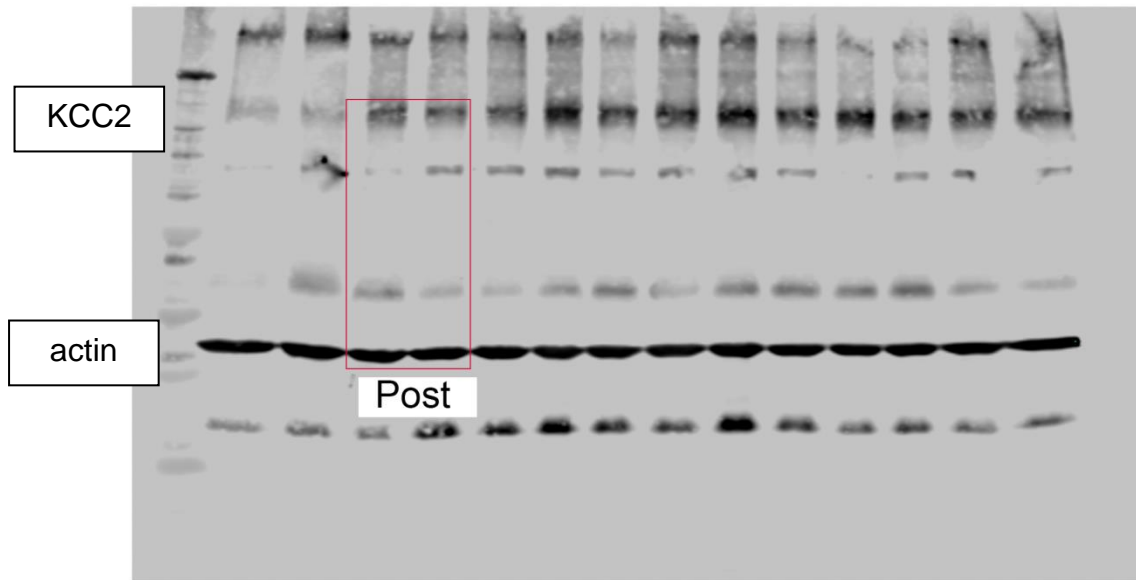
P7 PB-only and Primed 10mg/kg KCC2, S940, and Actin



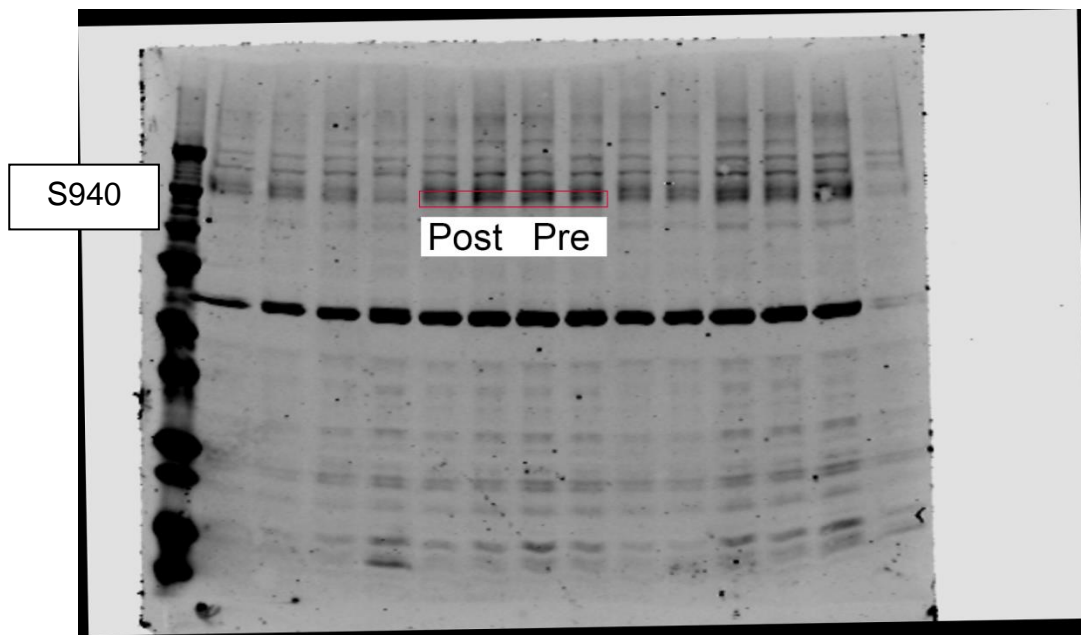
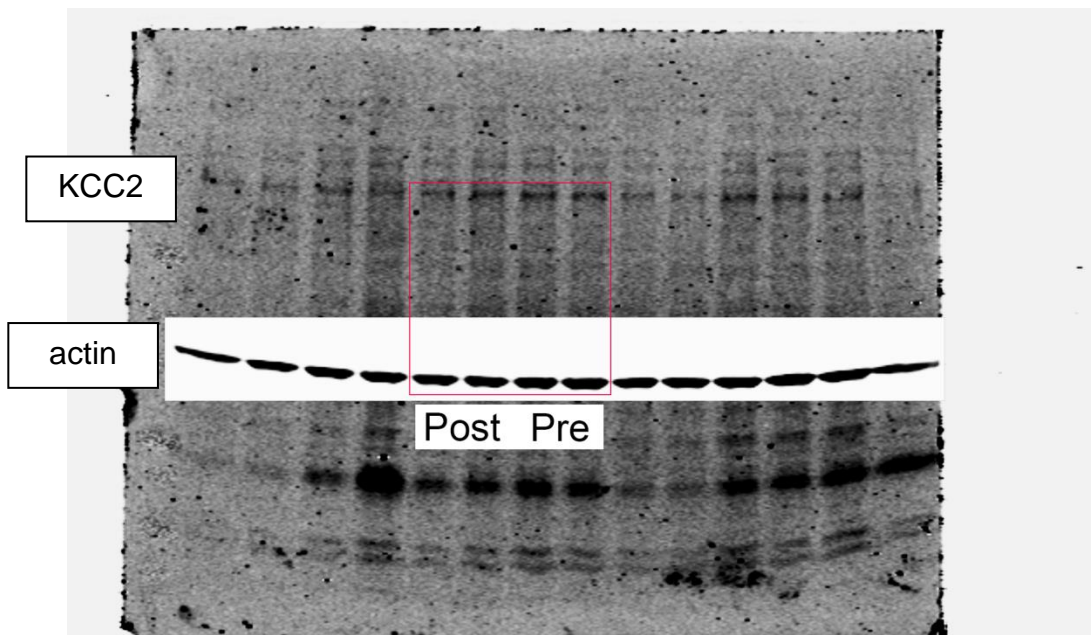
P7 Post and Primed 5mg/kg KCC2, S940, and Actin



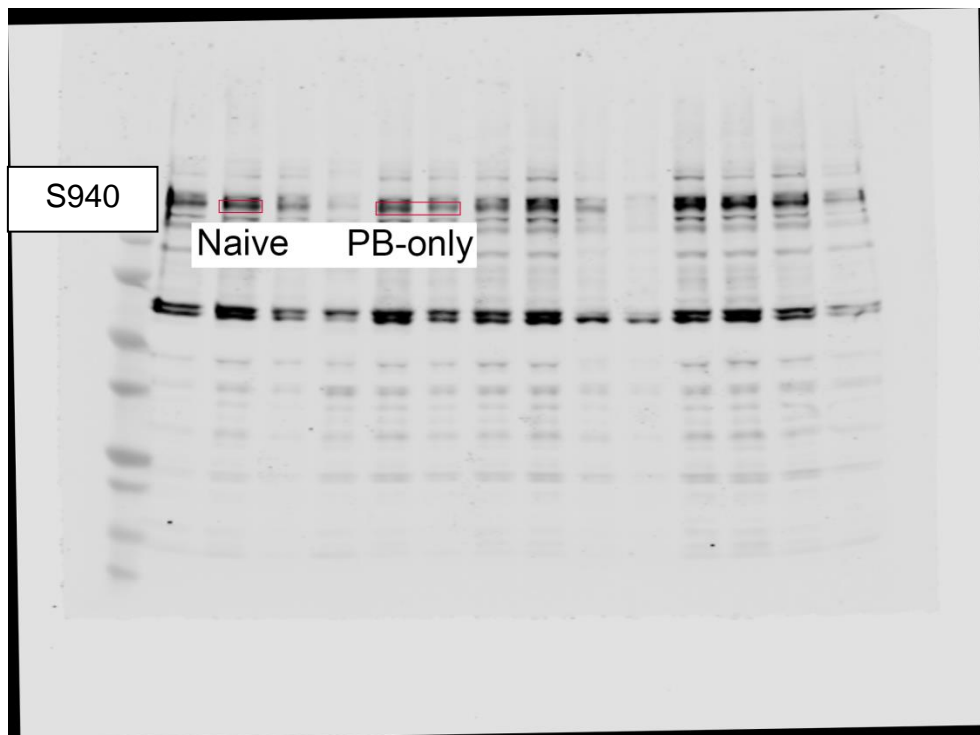
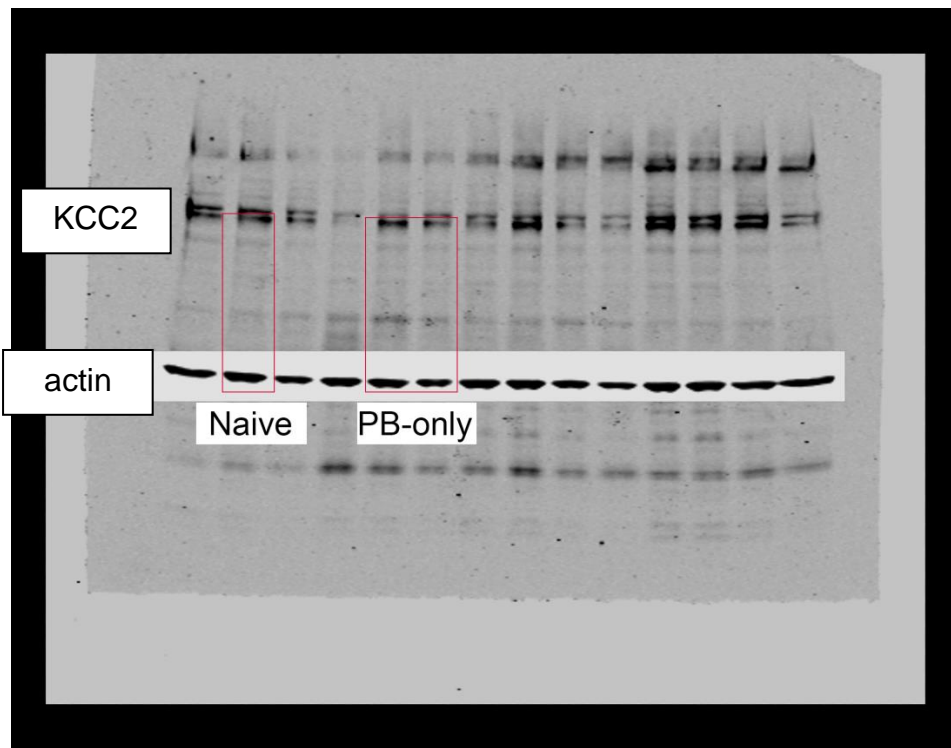
P7 Post 10mg/kg KCC2, S940, and Actin



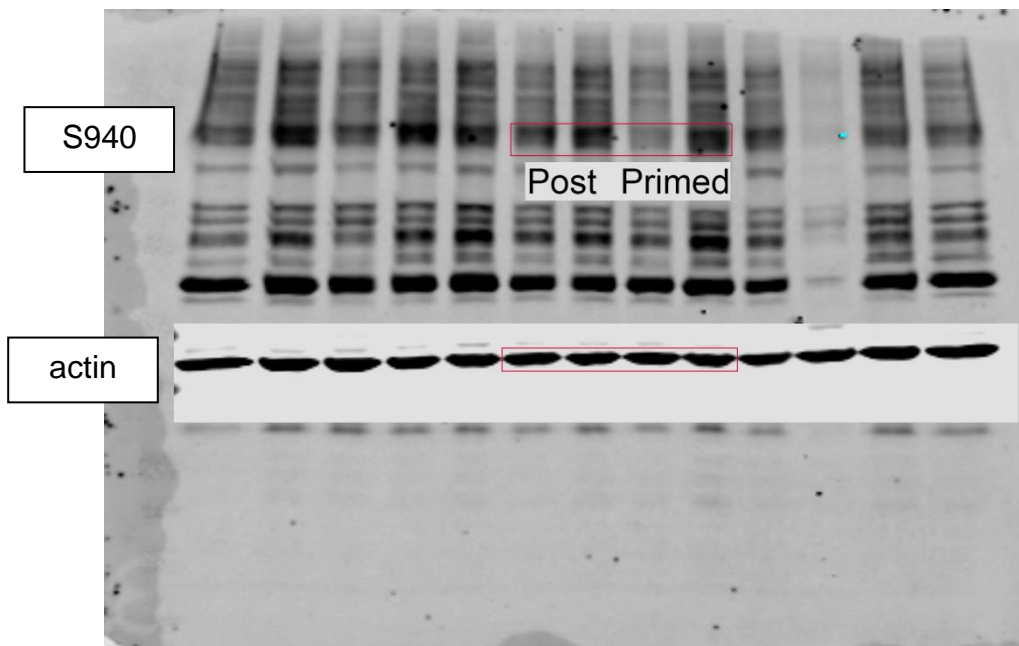
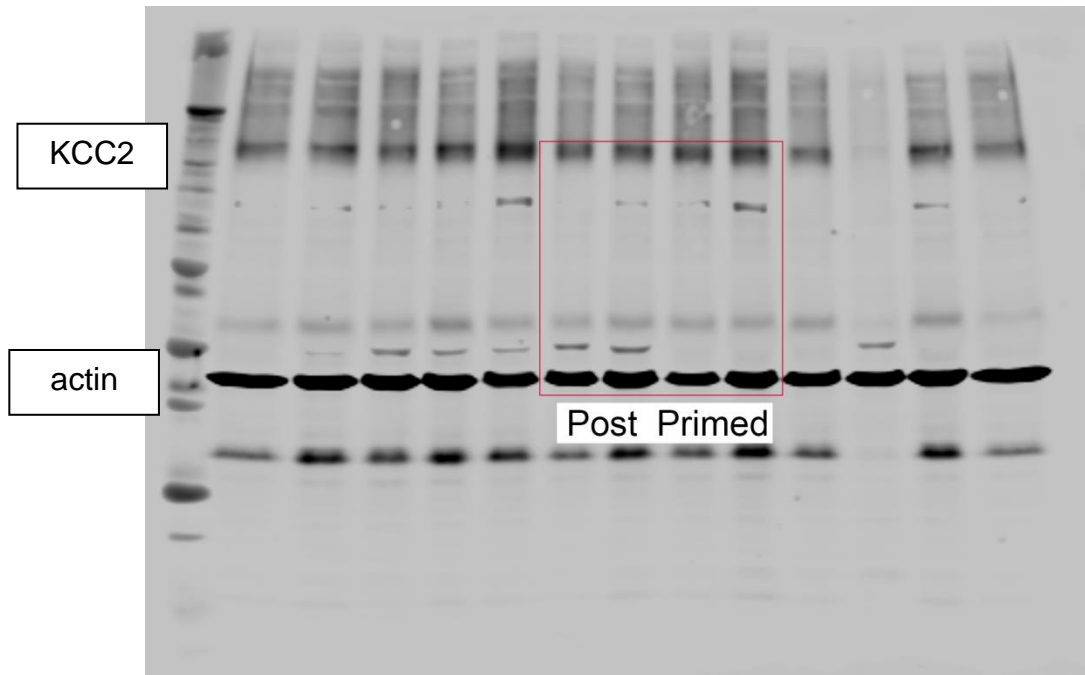
P7 Post and Pre 20mg/kg KCC2, S940, and Actin



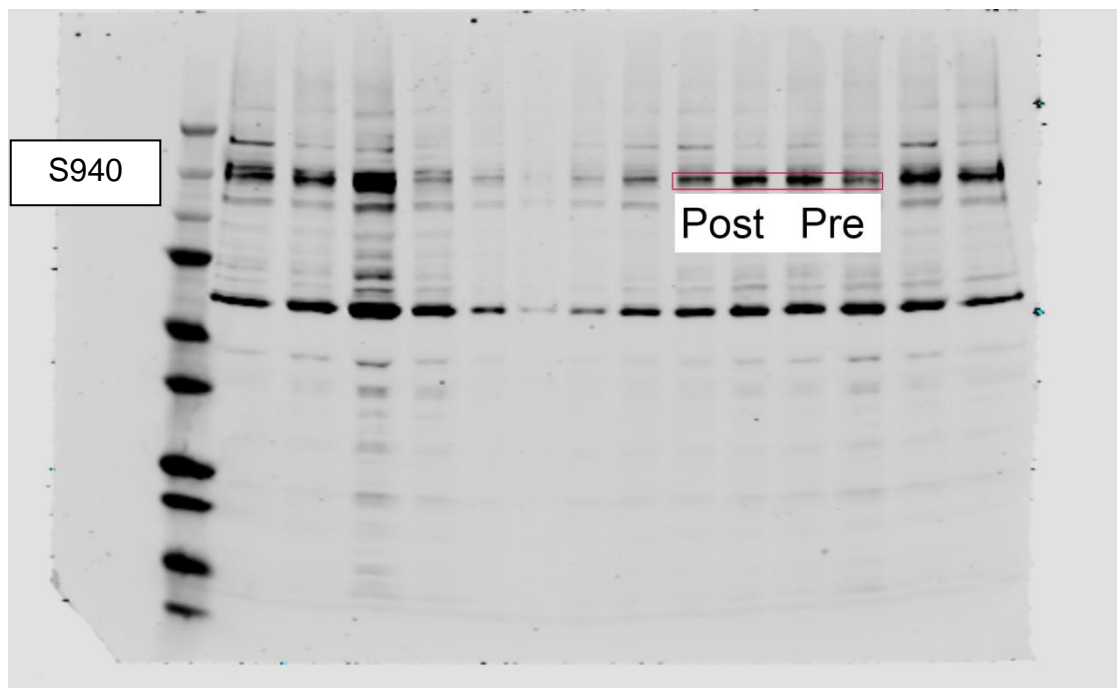
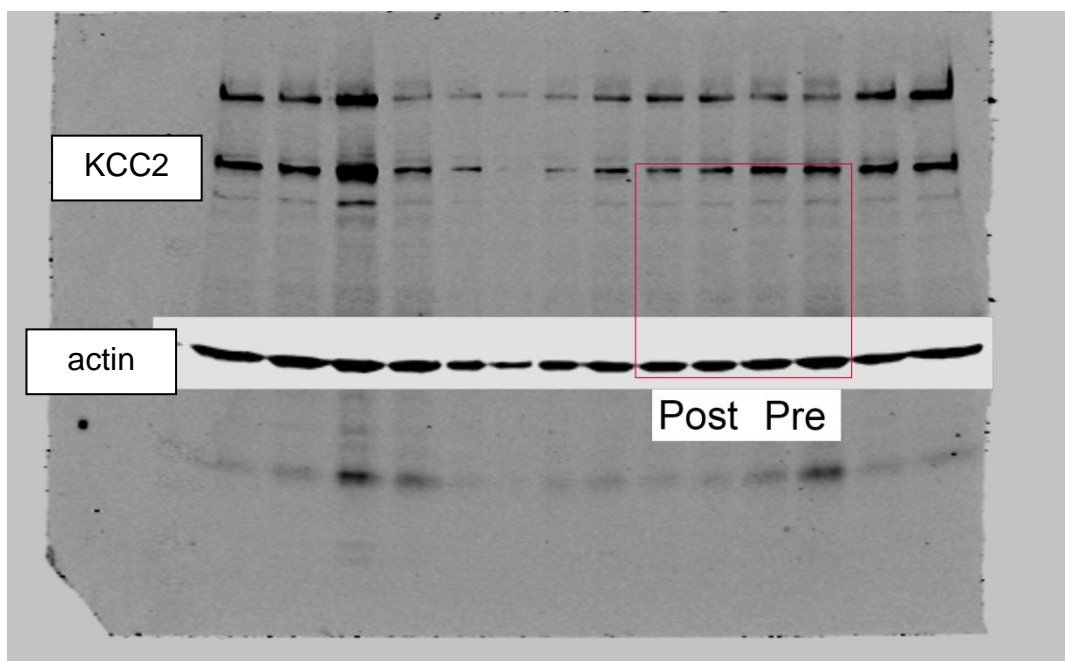
P10 Naïve and PB-only KCC2, S940, and Actin



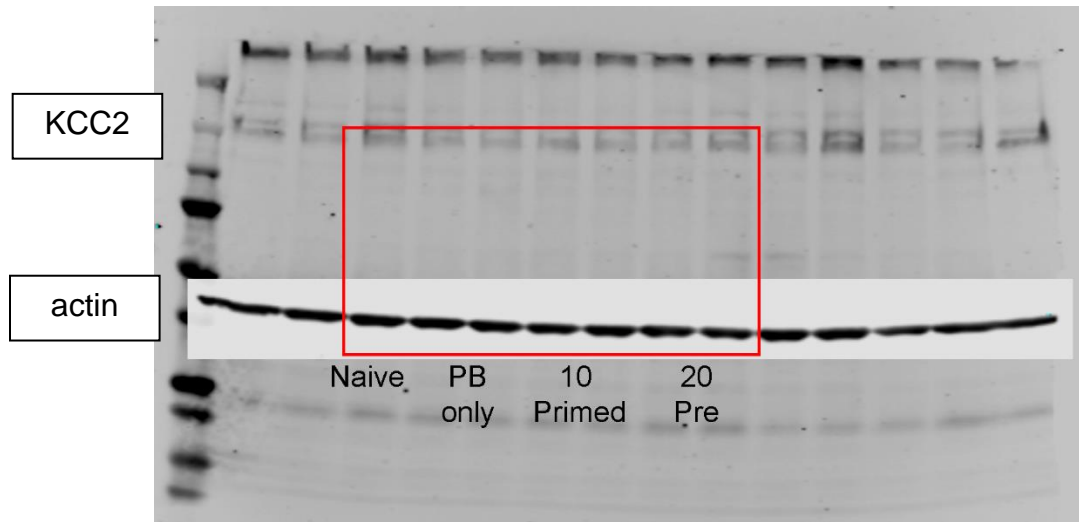
P10 Post and Primed 10mg/kg KCC2, S940, and Actin



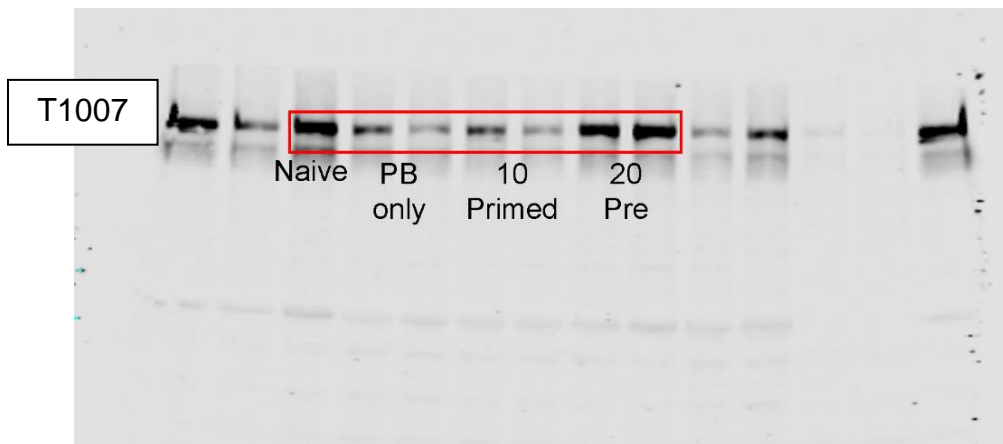
P10 Post and Pre 20mg/kg KCC2, S940, and Actin



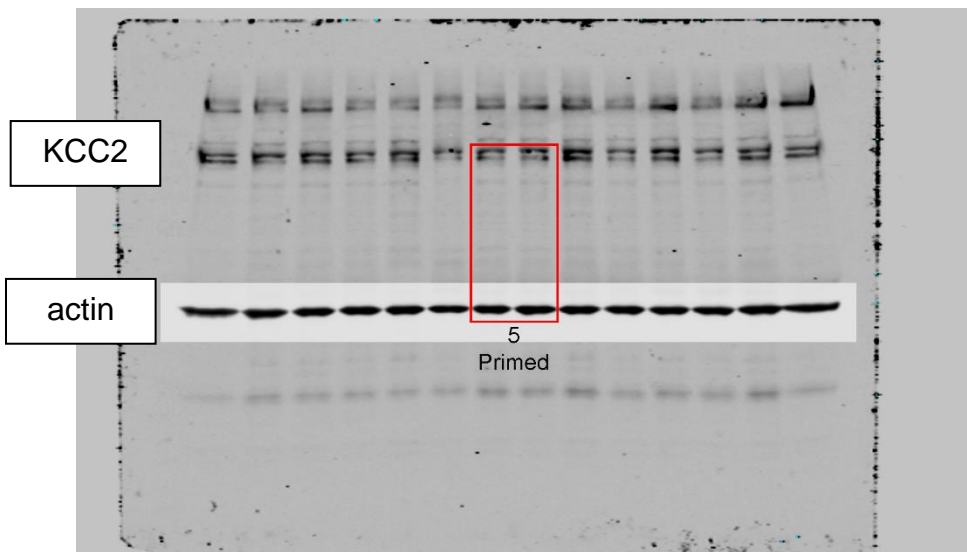
P7 Naïve, PB-only, Primed 10mg/kg and Pre 20mg/kg: KCC2 and Actin



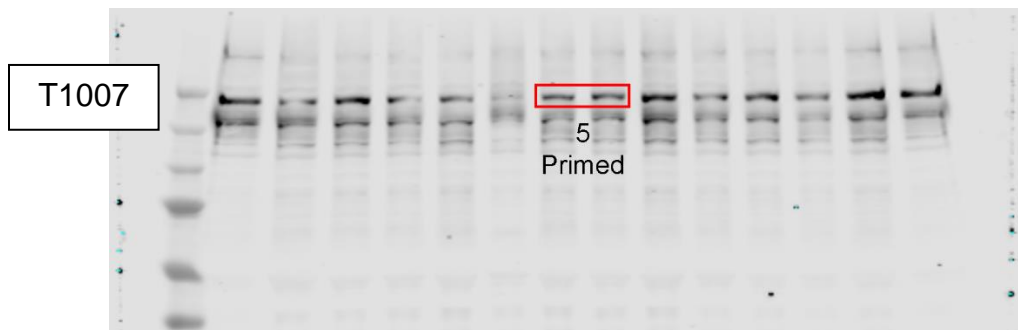
P7 Naïve, PB-only, Primed 10mg/kg and Pre 20mg/kg: T1007



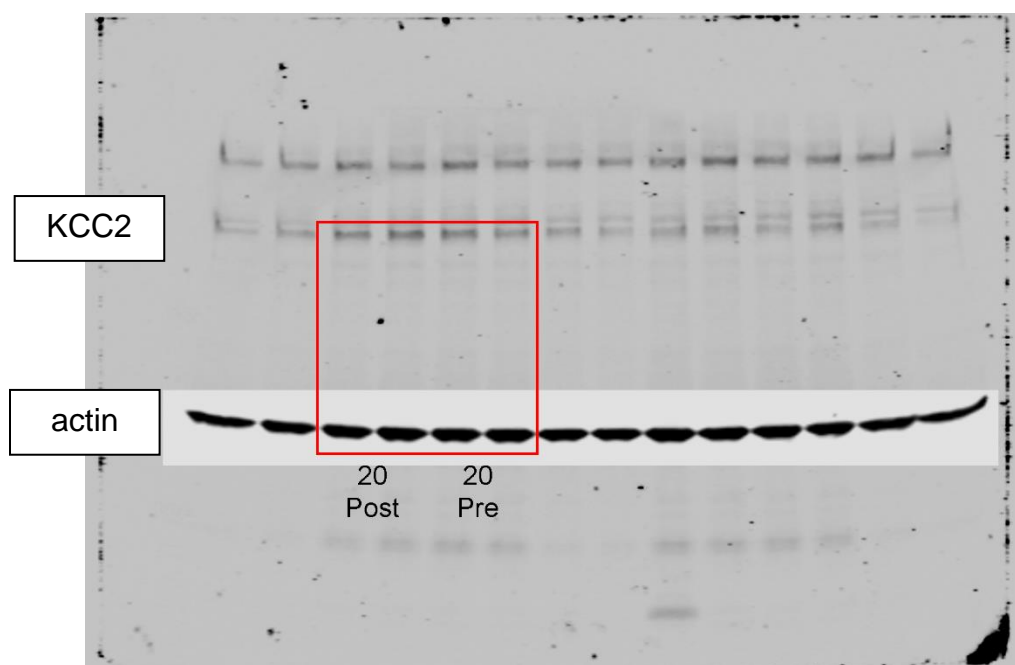
P7 Primed 5mg/kg: KCC2 and Actin



P7 Primed 5mg/kg: T1007



P7 Post and Pre 20mg/kg: KCC2 and Actin



P7 Post and Pre 20mg/kg: T1007

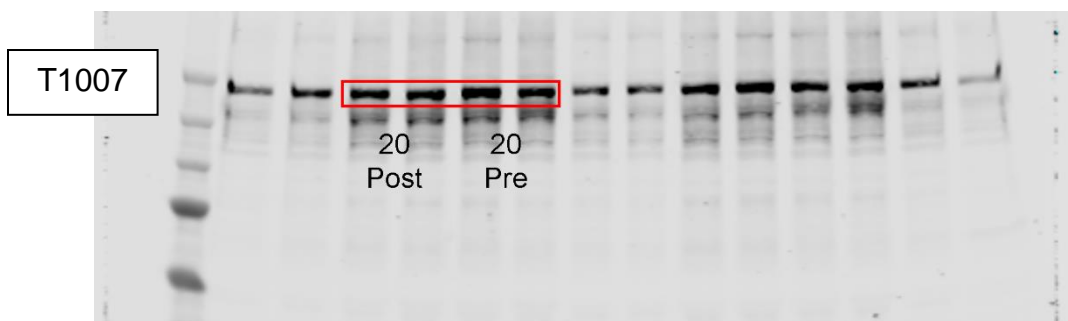
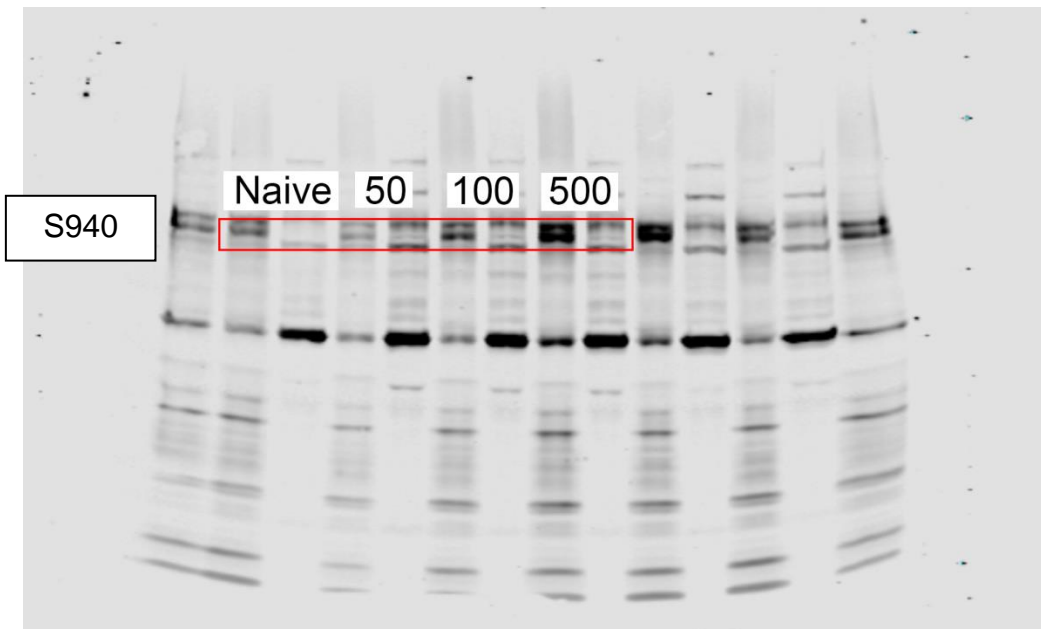
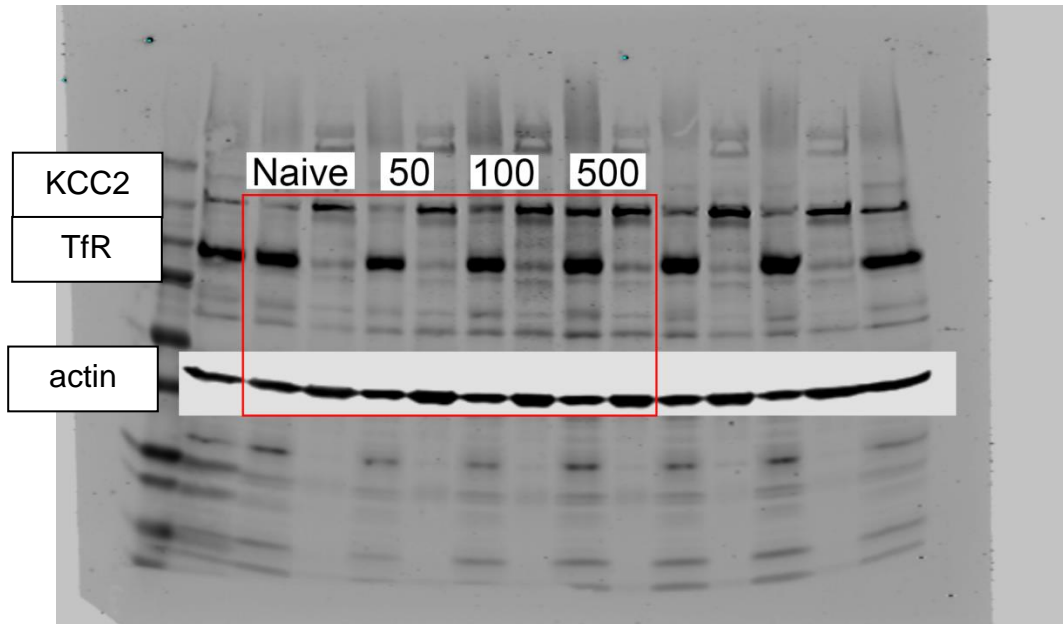
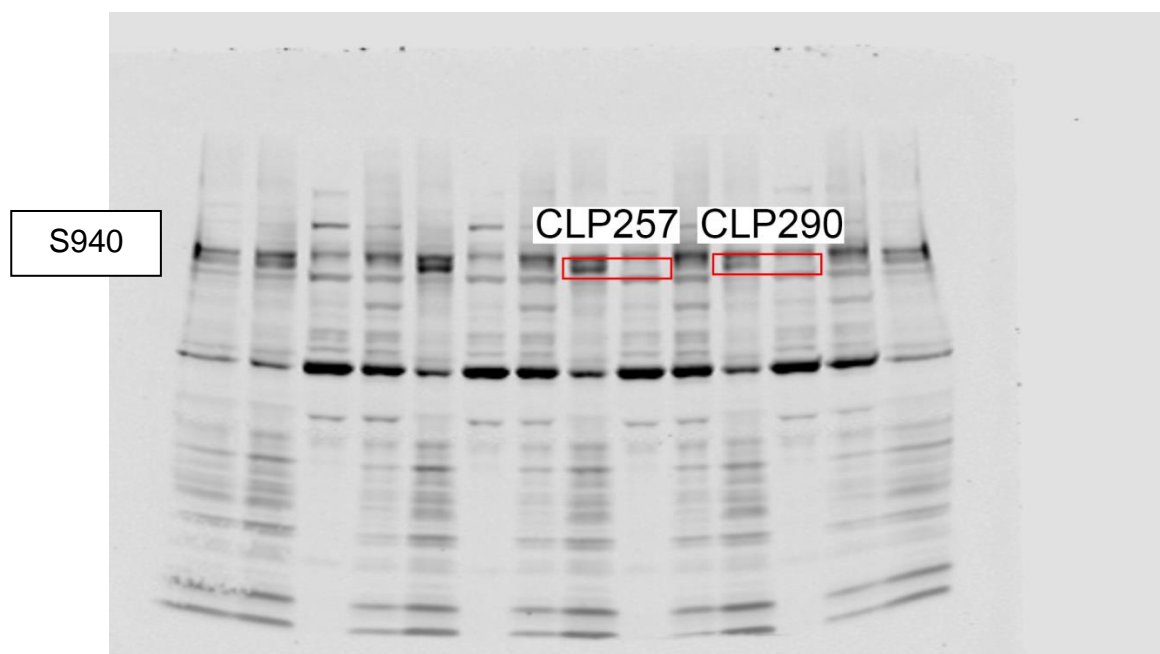
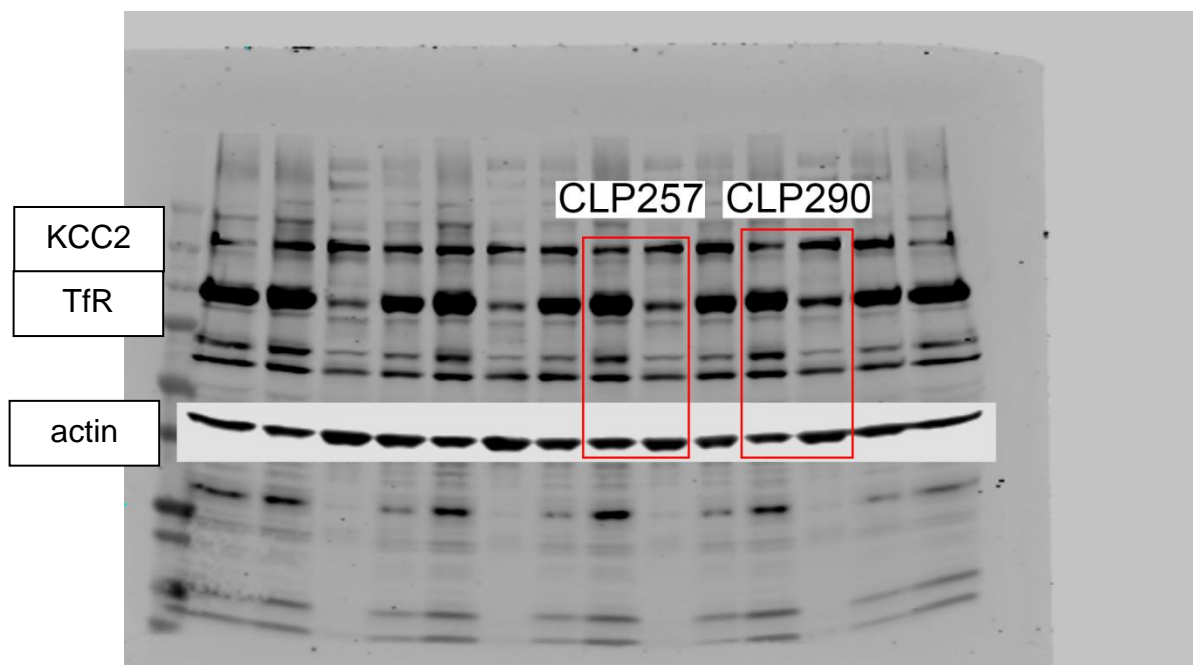


Figure 7

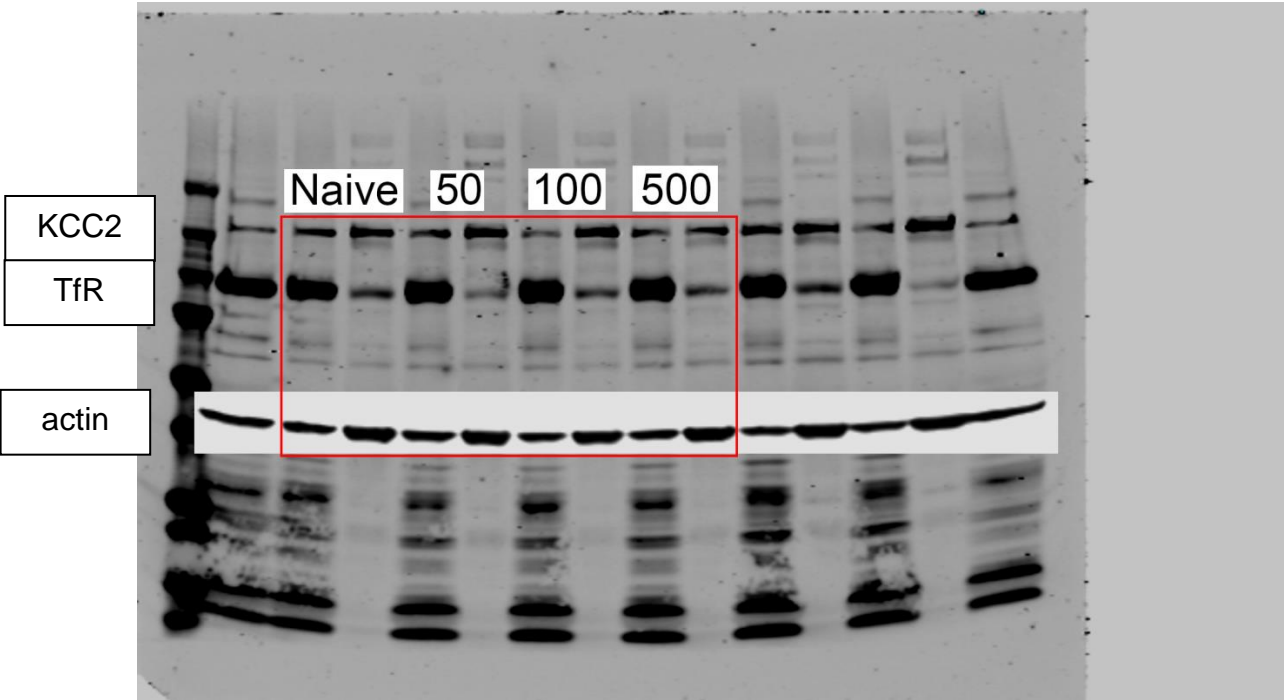
Naïve, 50uM, 100uM, and 500uM CLP257: KCC2, S940, TfR, and Actin



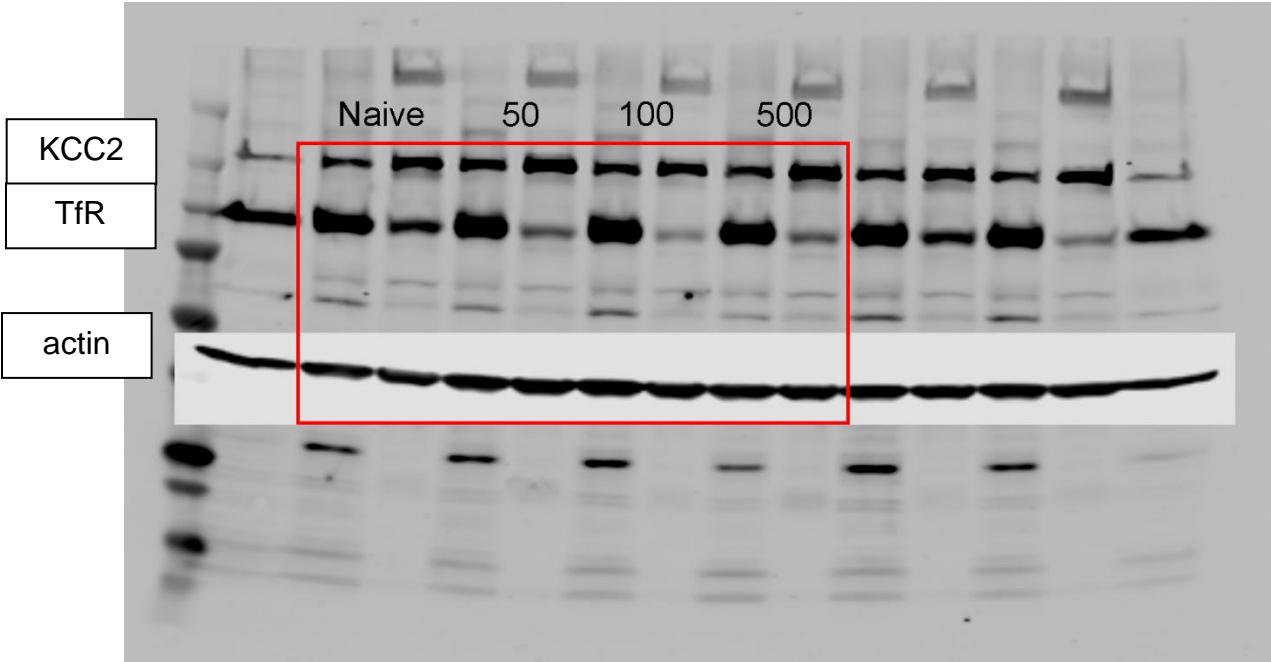
100uM CLP257 vs. CLP290: KCC2, S940, TfR, and Actin



S940A Knock-in Mouse: Naïve, 50uM, 100uM, 500uM CLP257: KCC2, TfR, and Actin

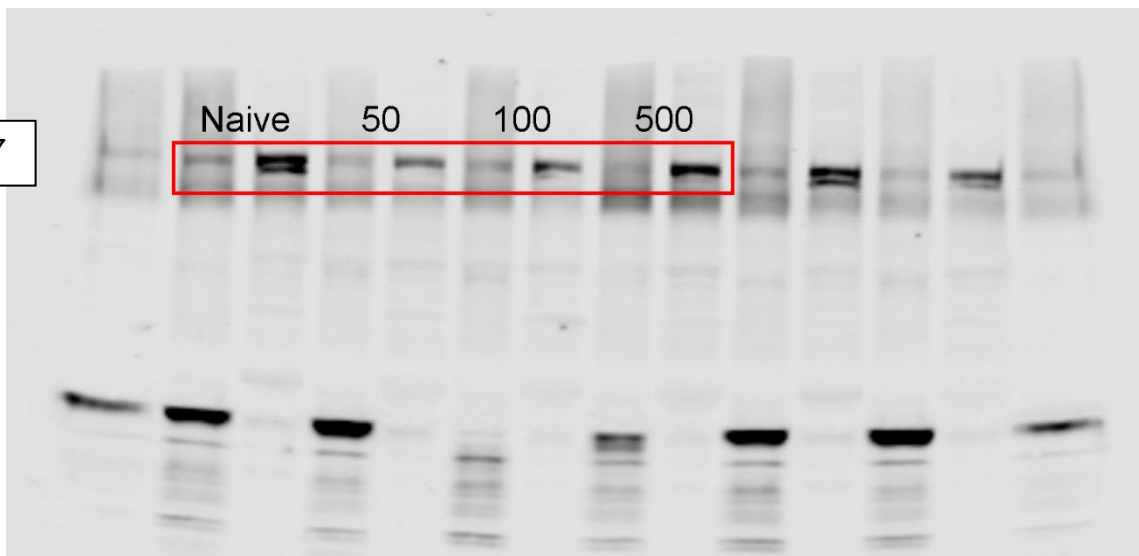


Naïve, 50uM, 100uM, 500uM CLP257: KCC2, TfR, and Actin



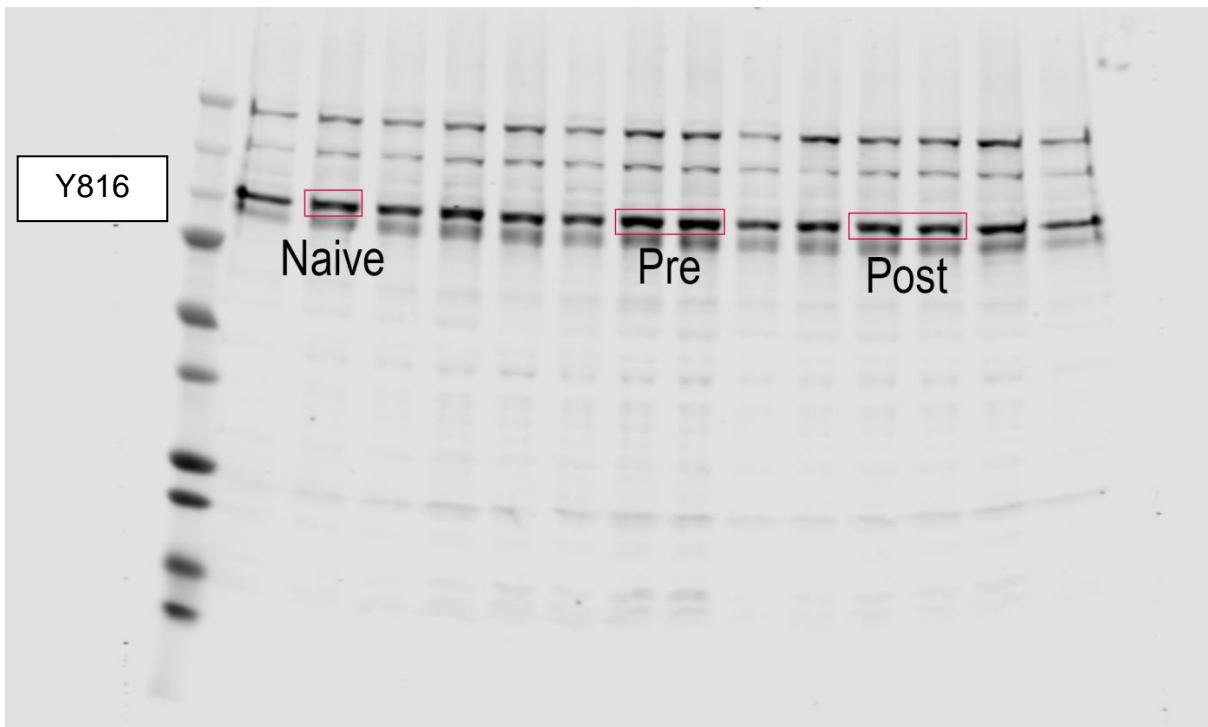
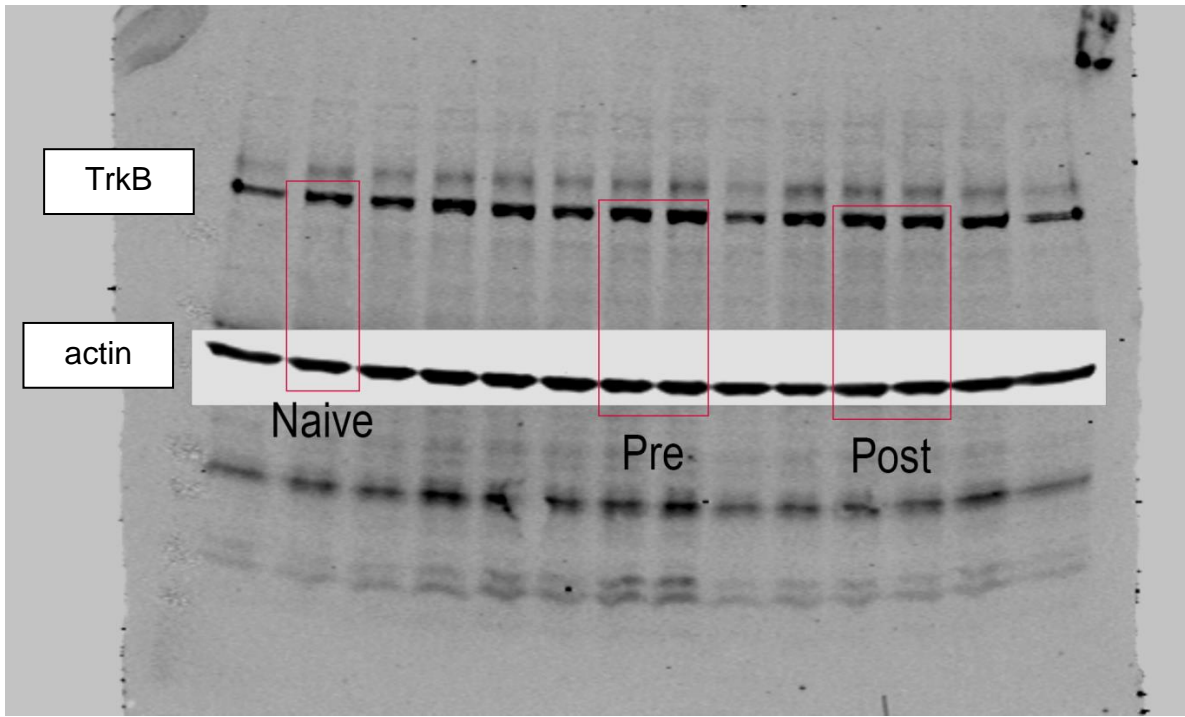
Naïve, 50uM, 100uM, 500uM CLP257: T1007

T1007

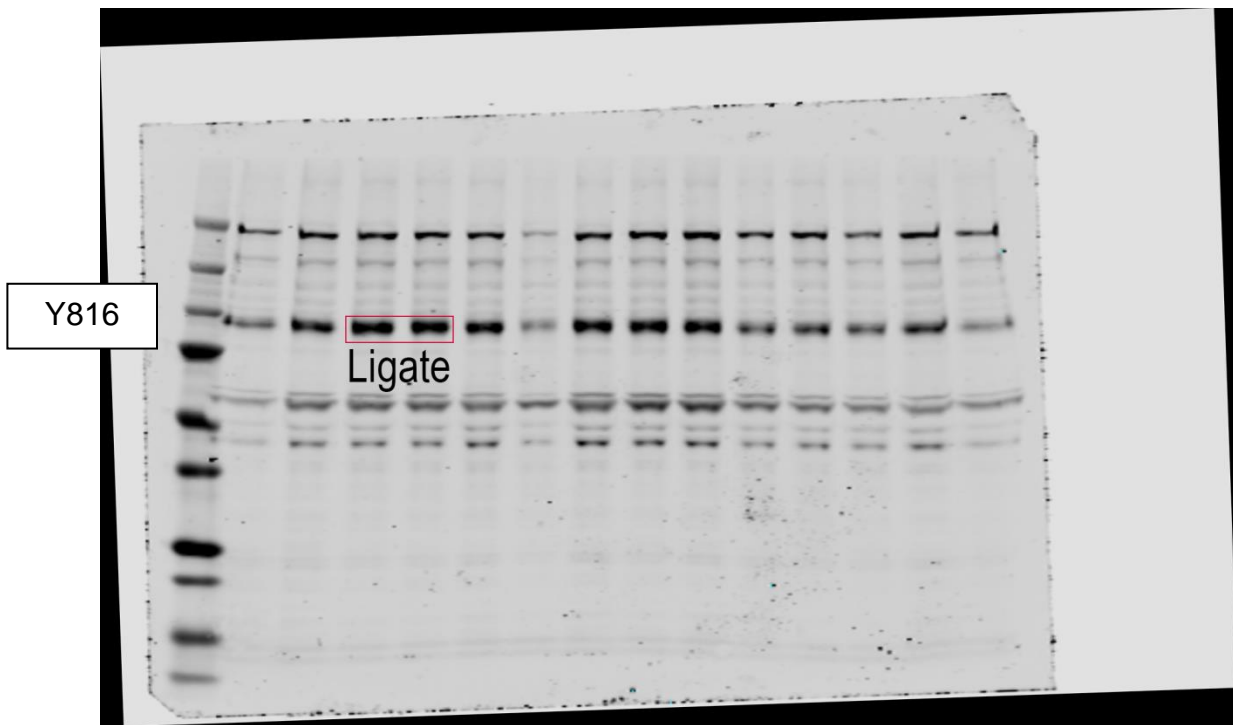
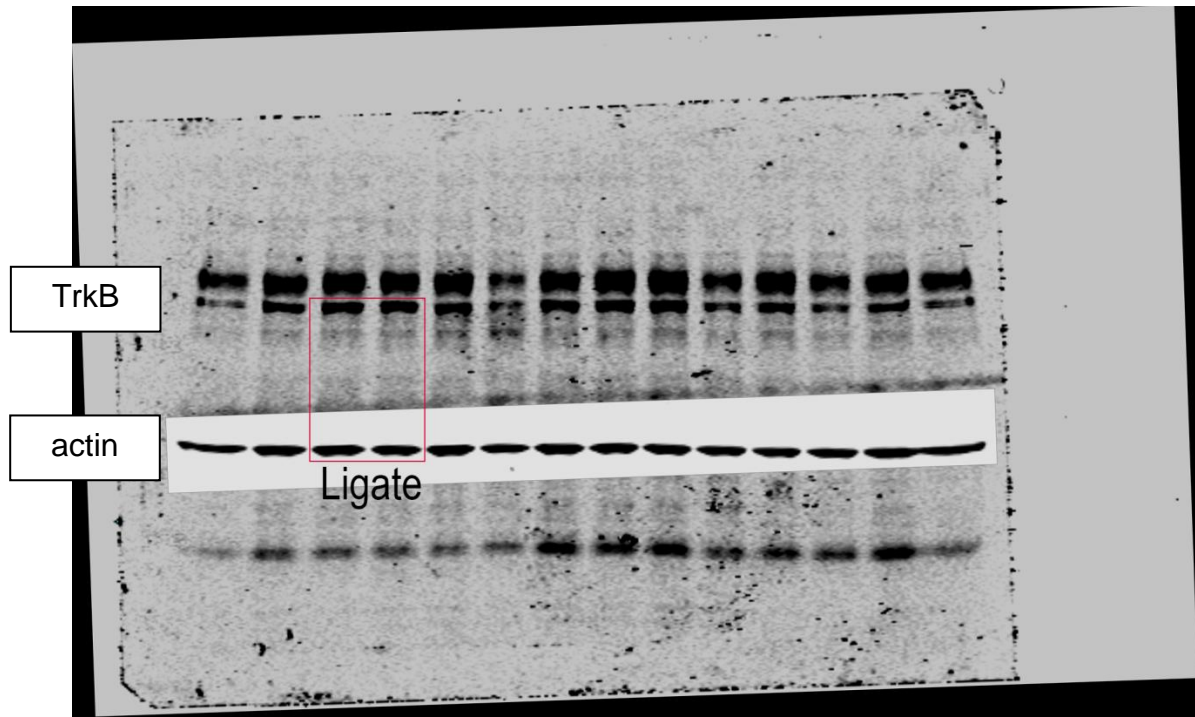


Supplemental Figure 4

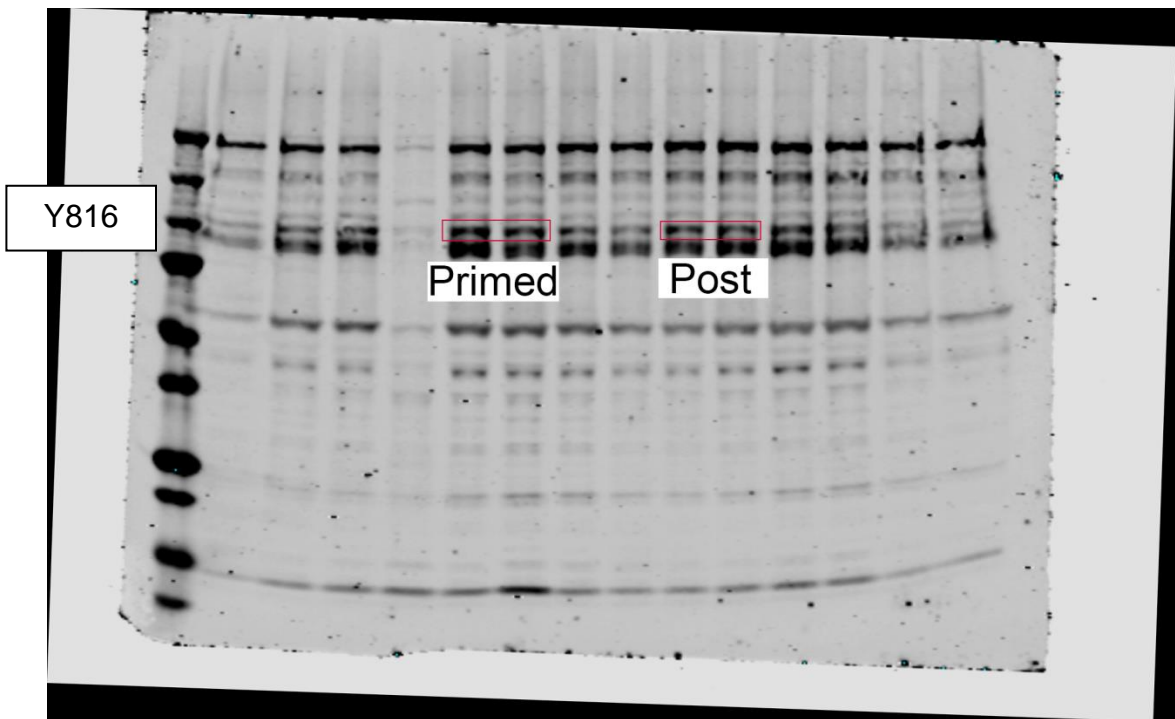
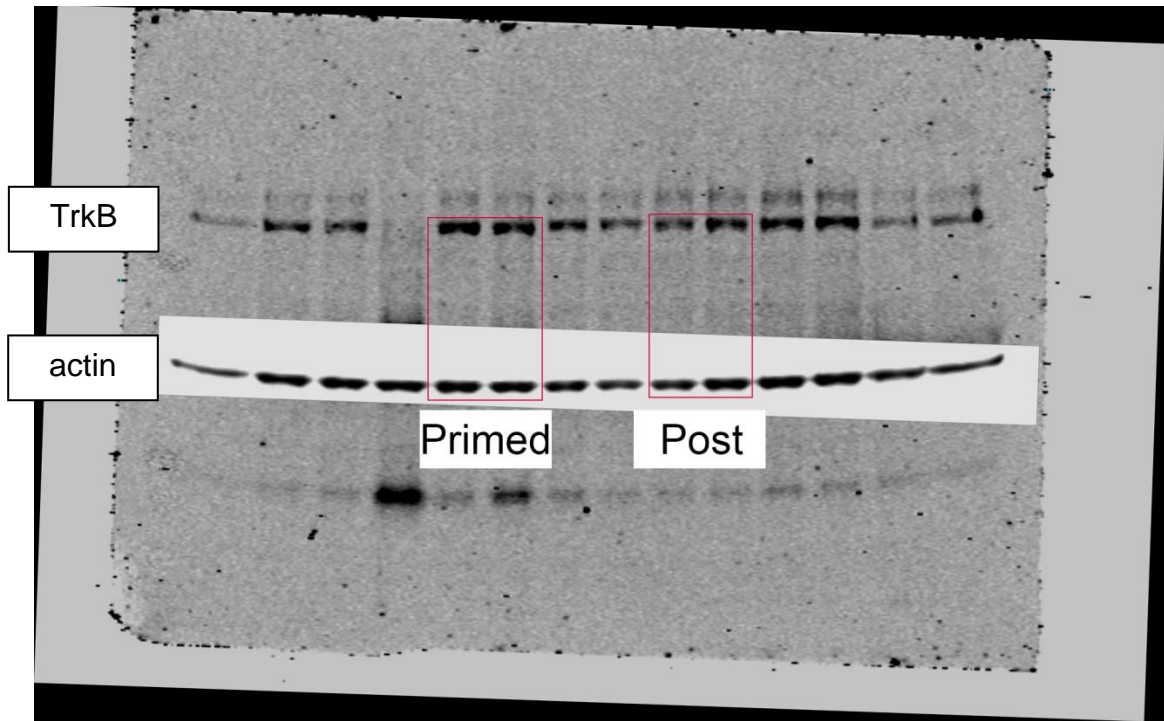
P7 Naïve, Post and Pre 20mg/kg TrkB, Y816, and Actin



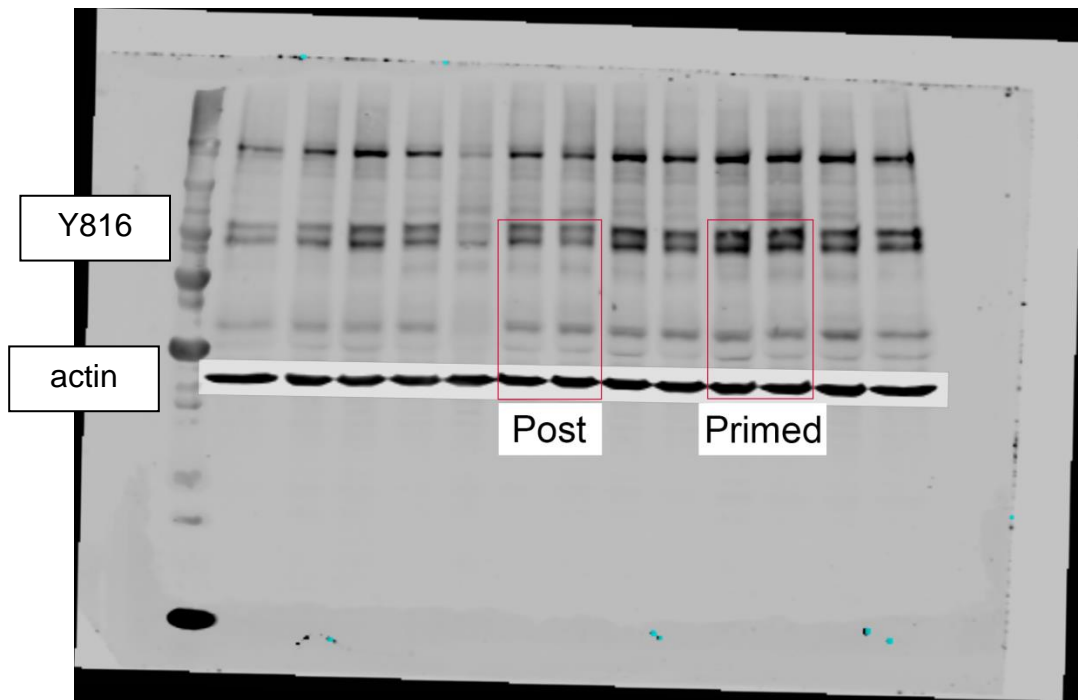
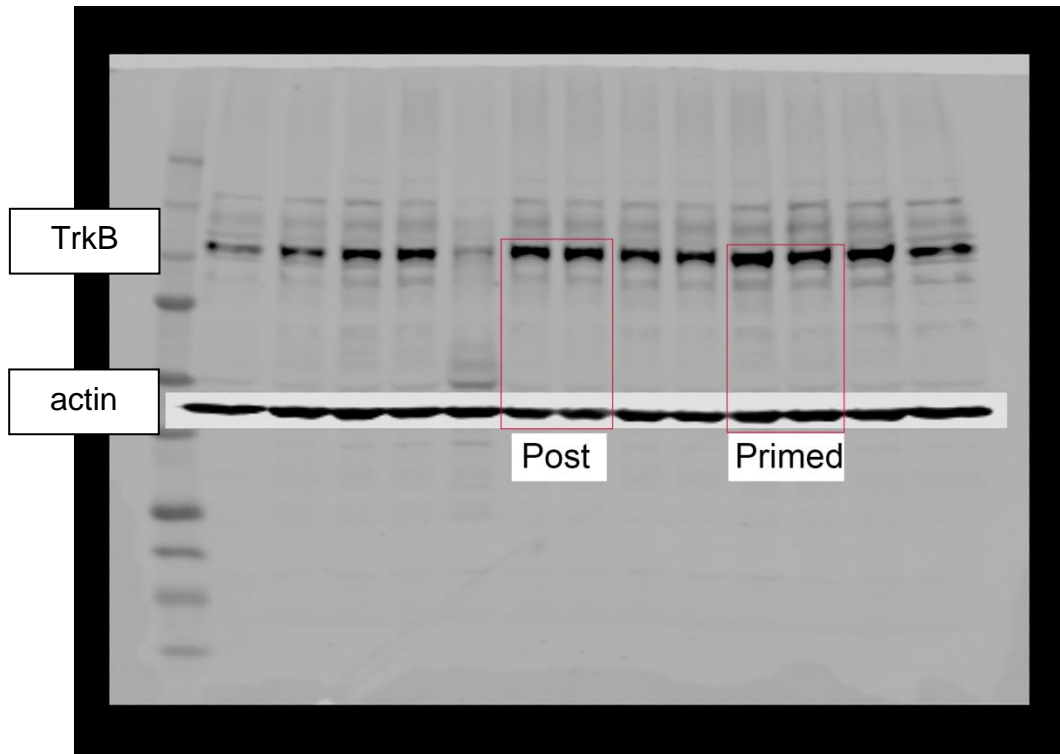
P7 PB-only TrkB, Y816, and Actin



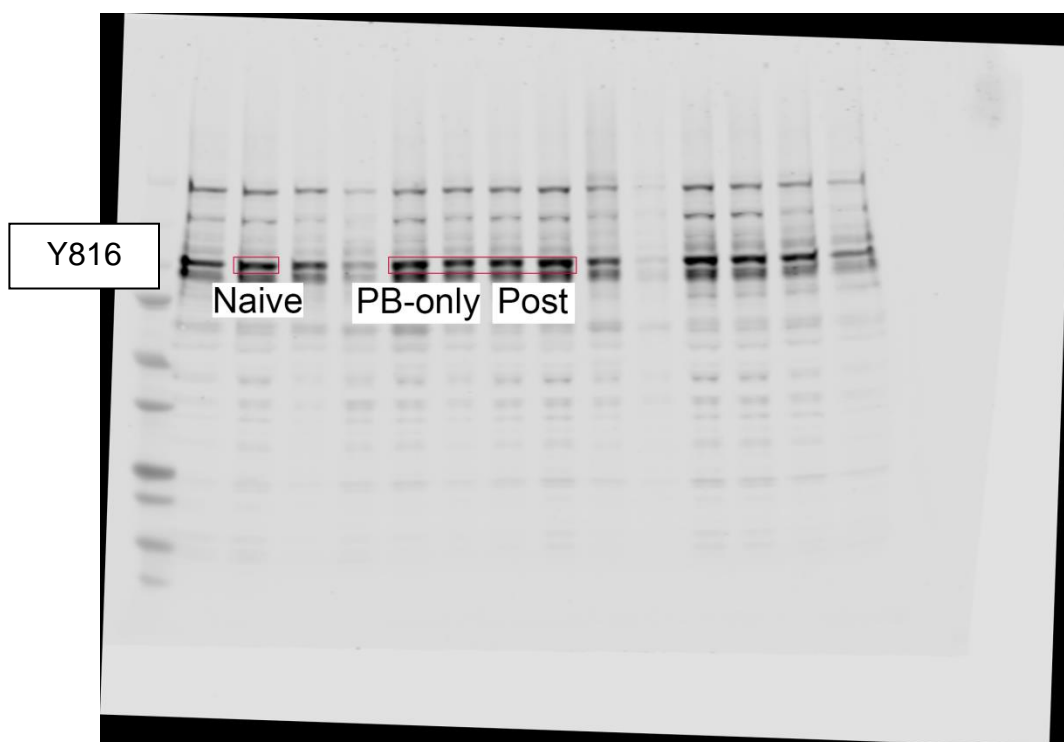
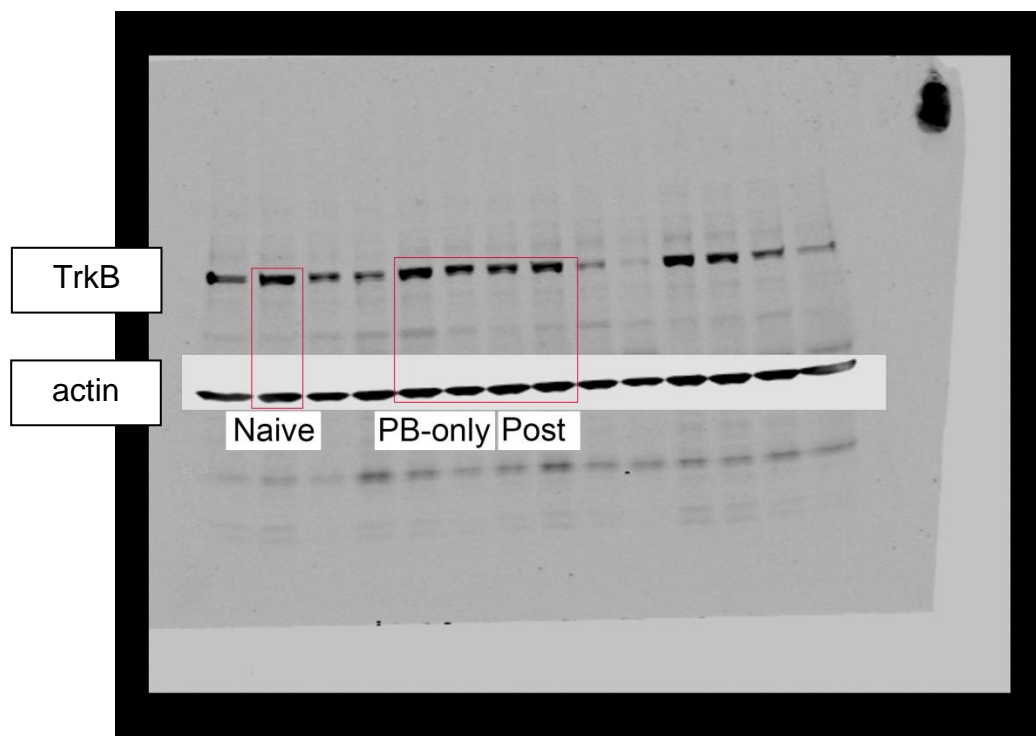
P7 Post and Primed 5mg/kg TrkB, Y816, and Actin



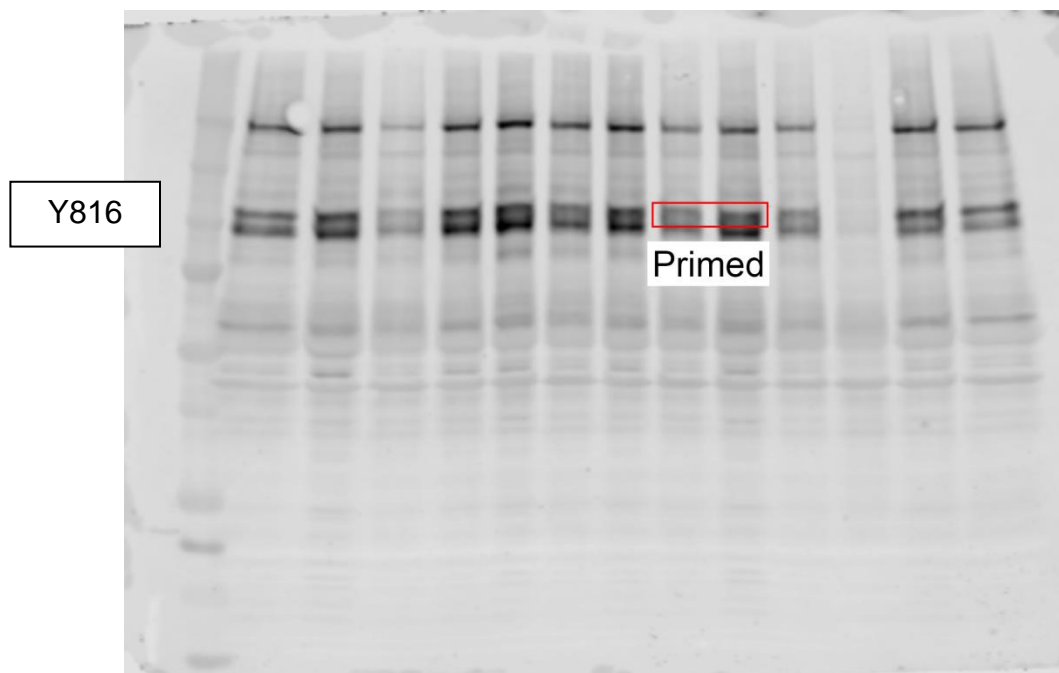
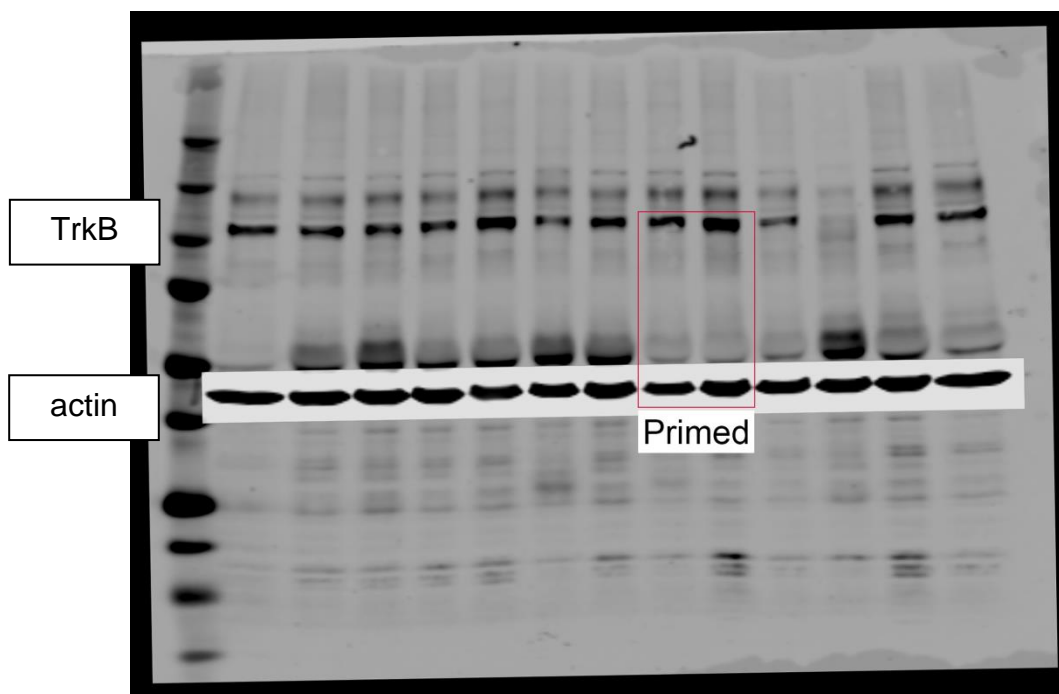
P7 Post and Primed 10mg/kg TrkB, Y816, and Actin



P10 Naïve, PB-only, and Post 10mg/kg TrkB, Y816, and Actin



P10 Primed 10mg/kg TrkB, Y816, and Actin



P10 Post and Pre 20mg/kg TrkB, Y816, and Actin

