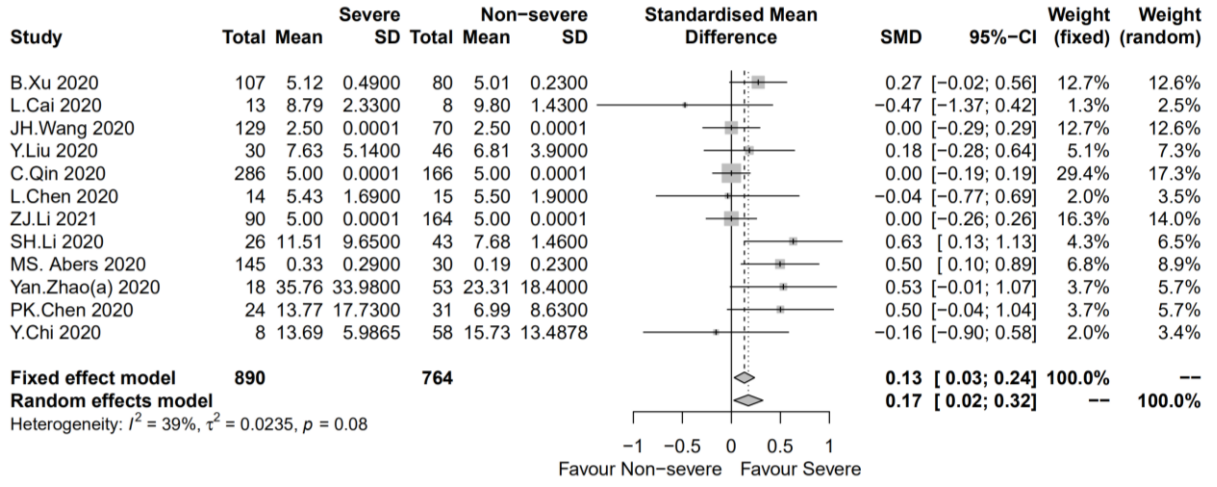
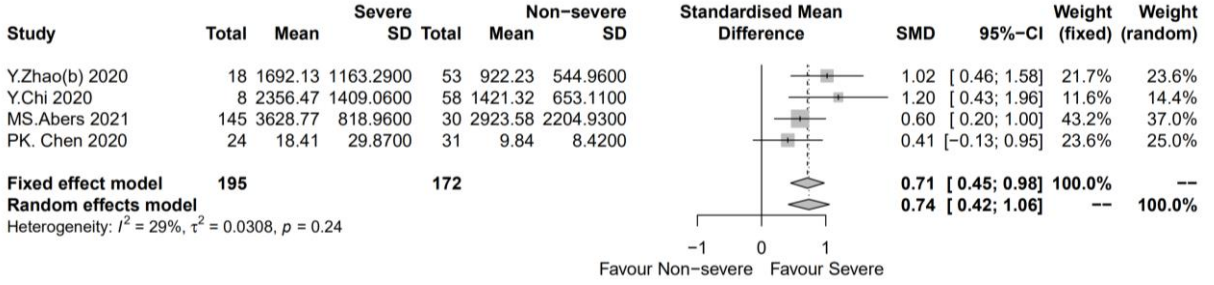


Figure E2(A) Forest plots of immunological parameters in severe and non-severe patients of COVID-19

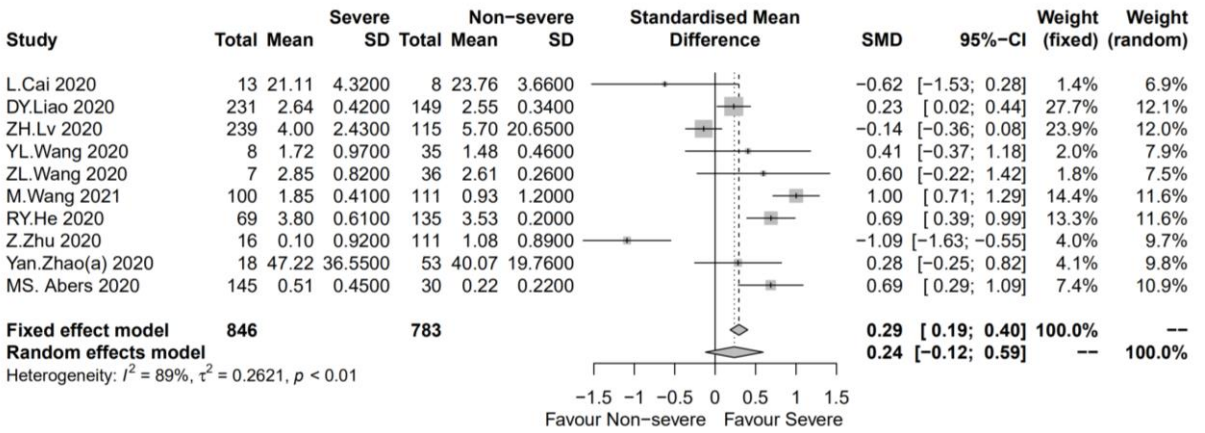
(1) IL-1 β



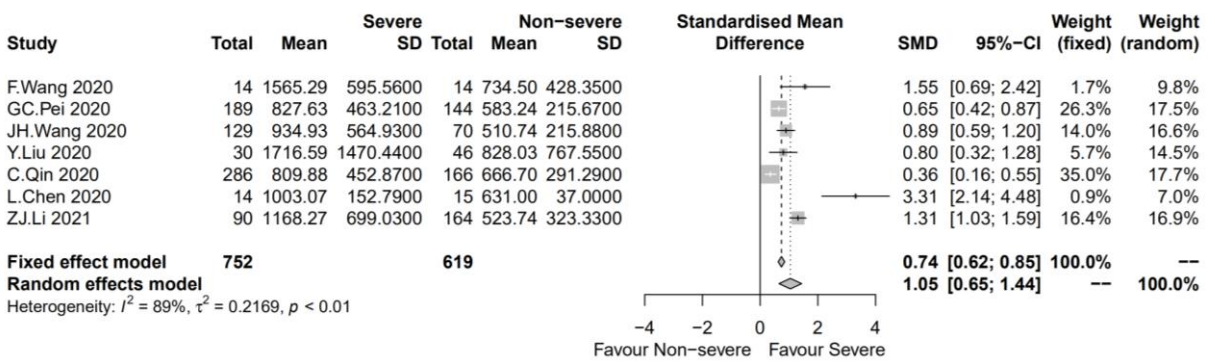
(2) IL-1Ra



(3) IL-2



(4) IL-2R



(5) IL-4

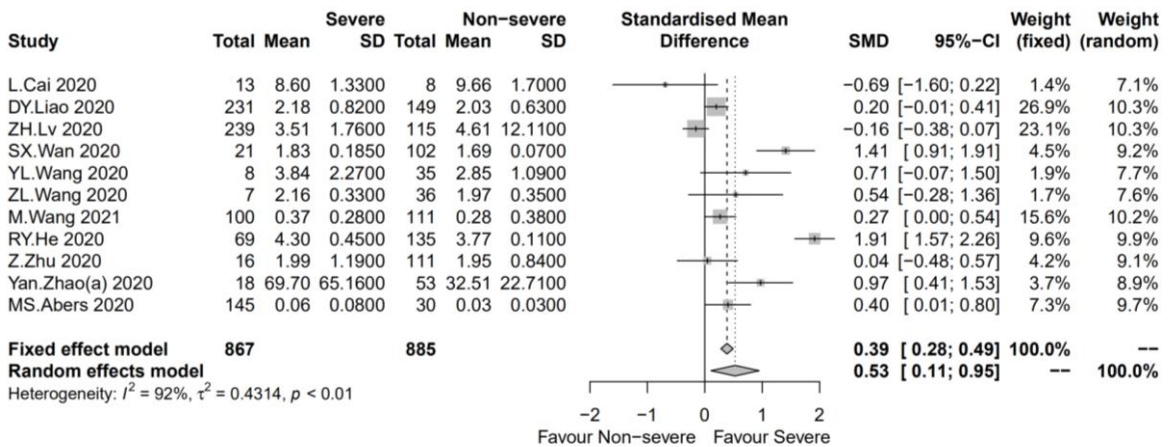
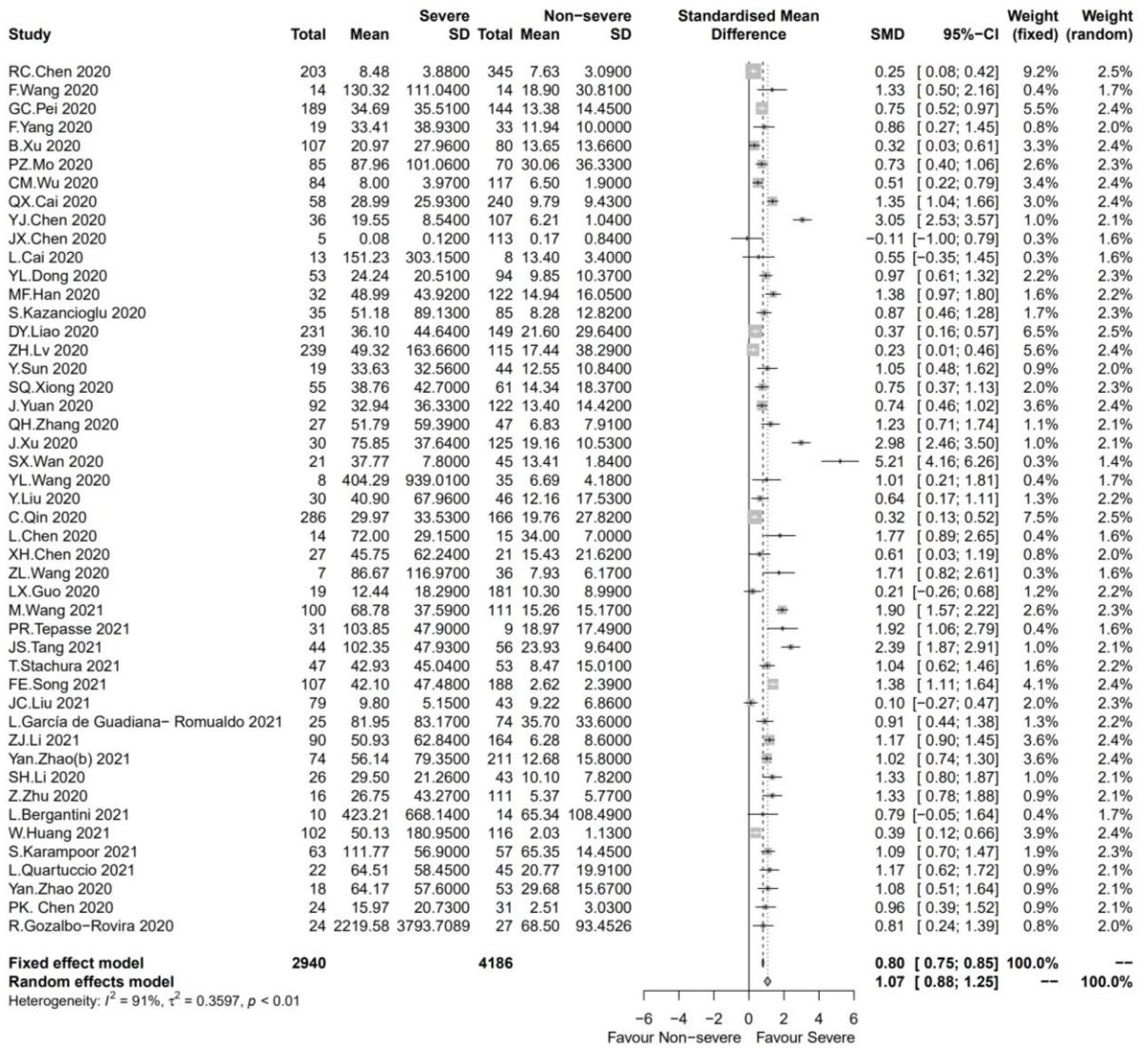
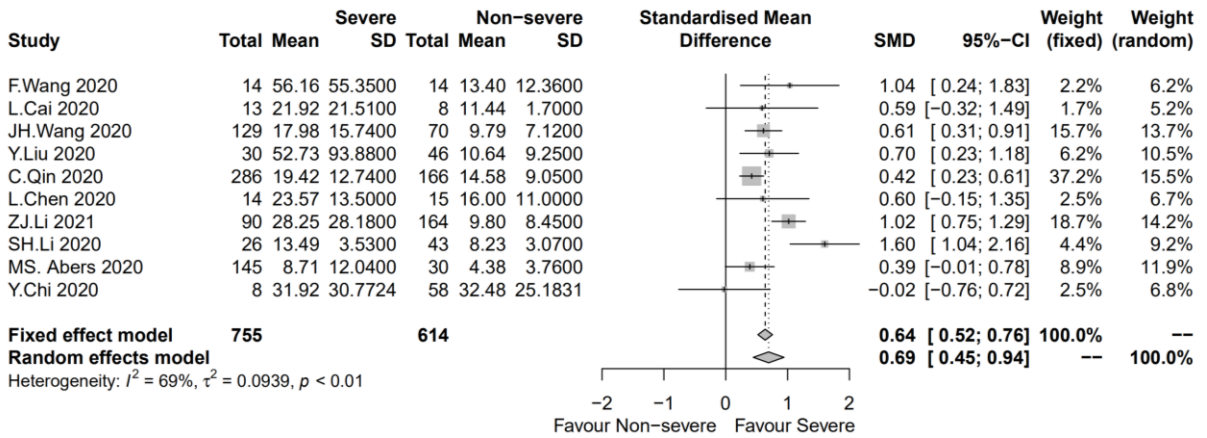


Figure E2(A) (Continued)

(6) IL-6



(7) IL-8



(8) IL-10

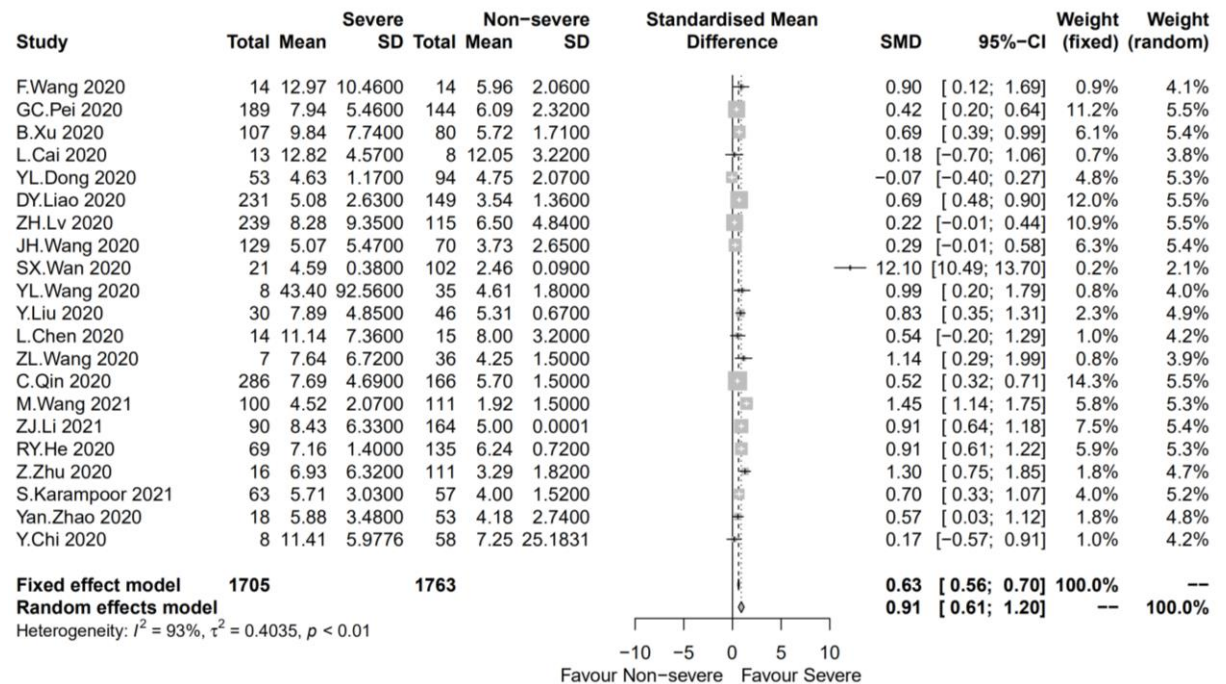
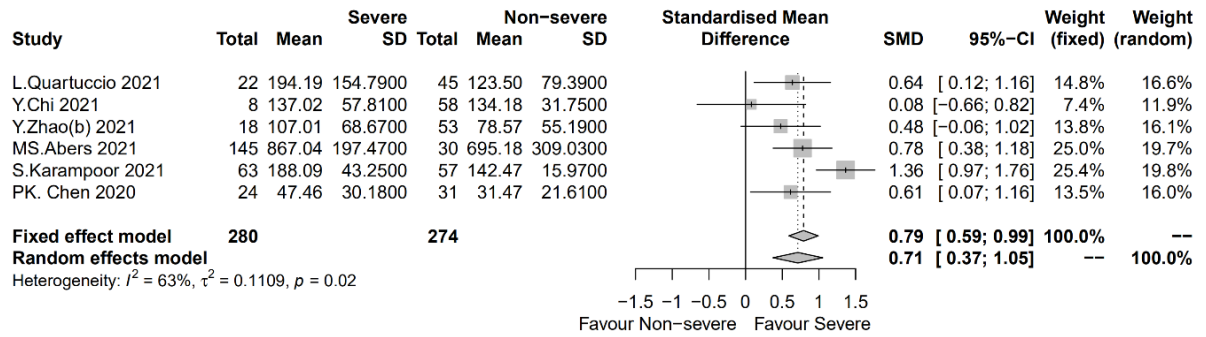
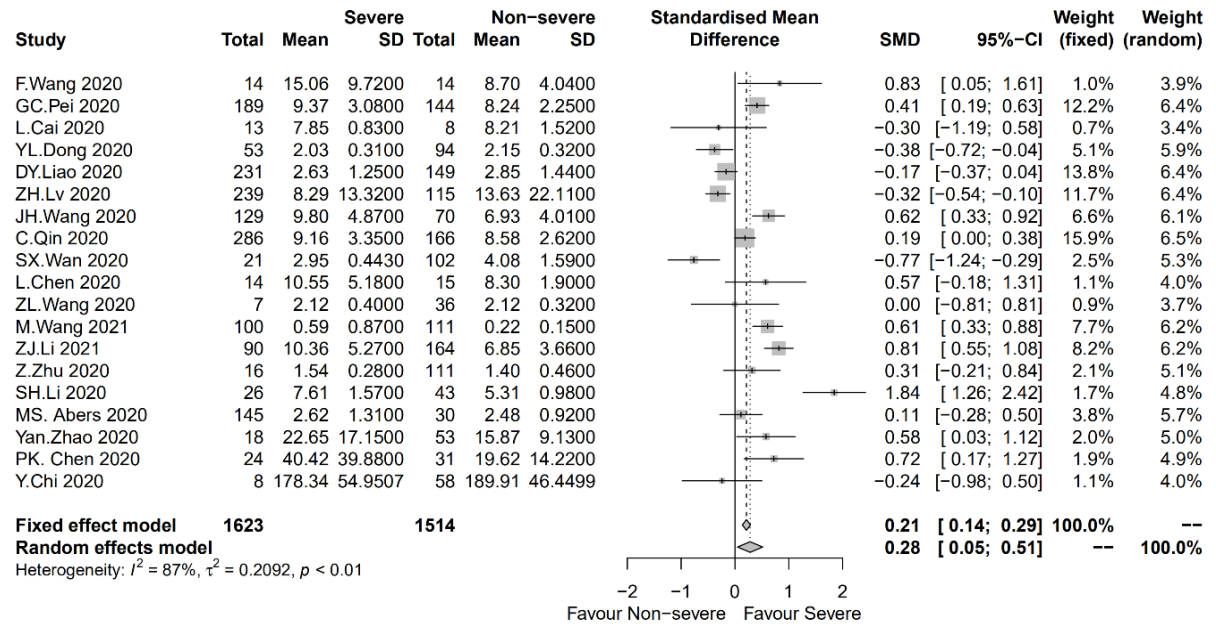


Figure E2(A) (Continued)

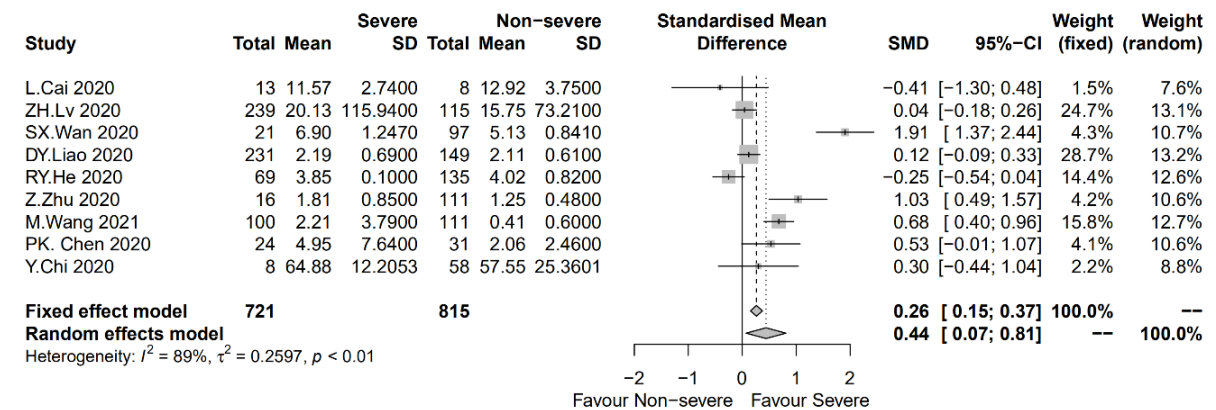
(9) IL-18



(10) TNF-α



(11) IFN-γ



(12) CD3+T(ab)

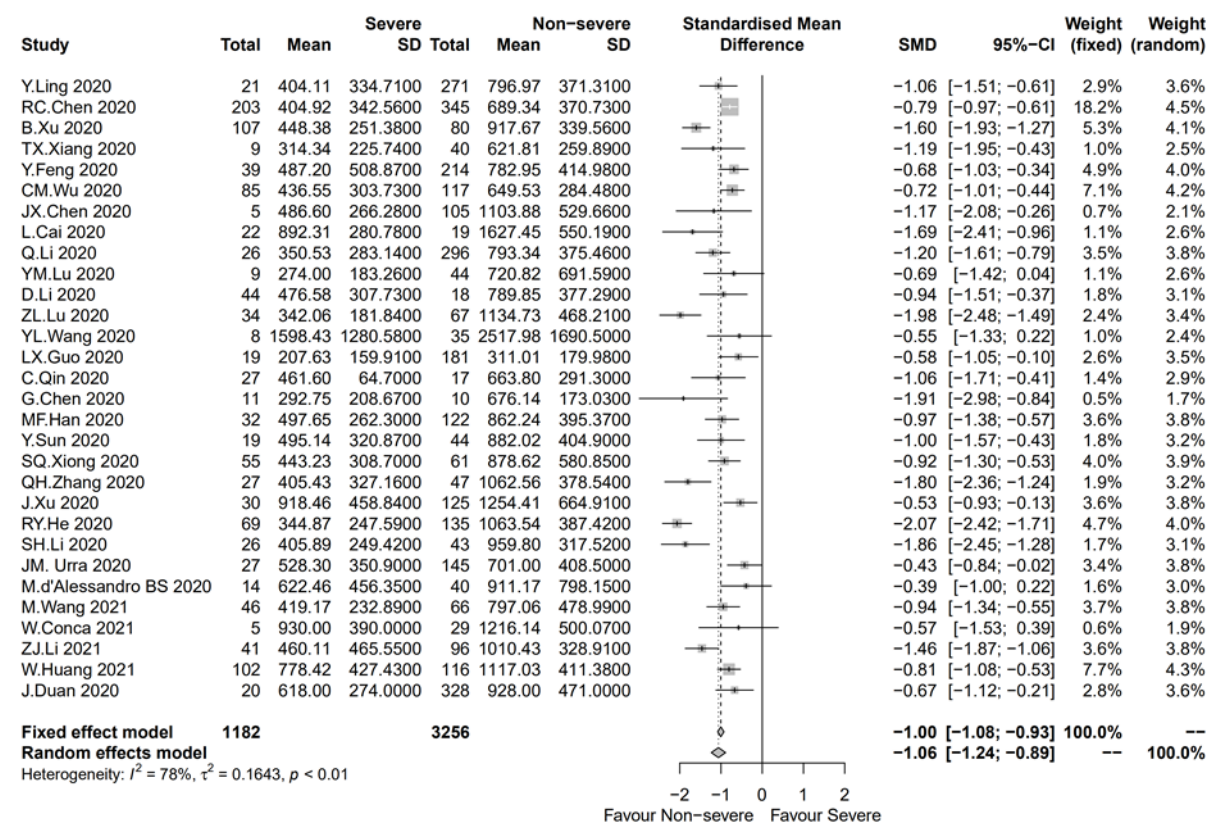
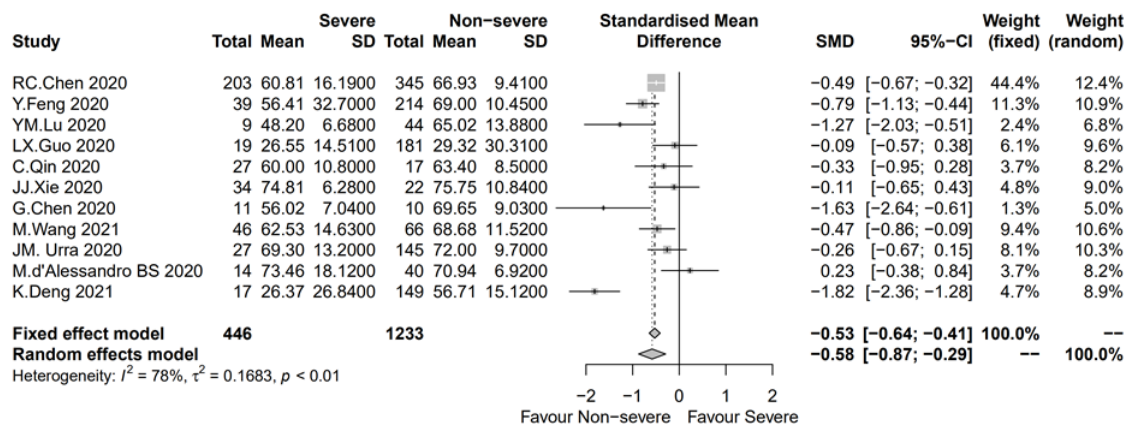
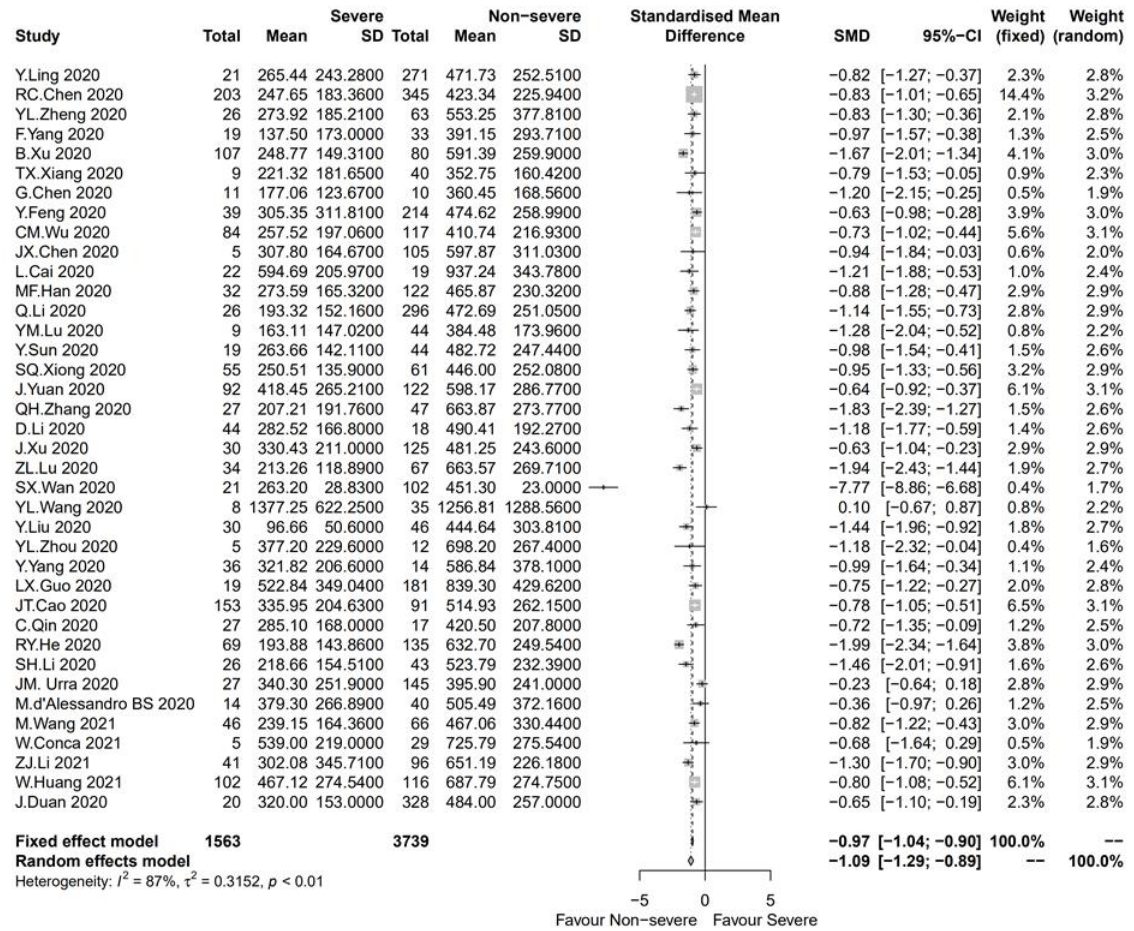


Figure E2(A) (Continued)

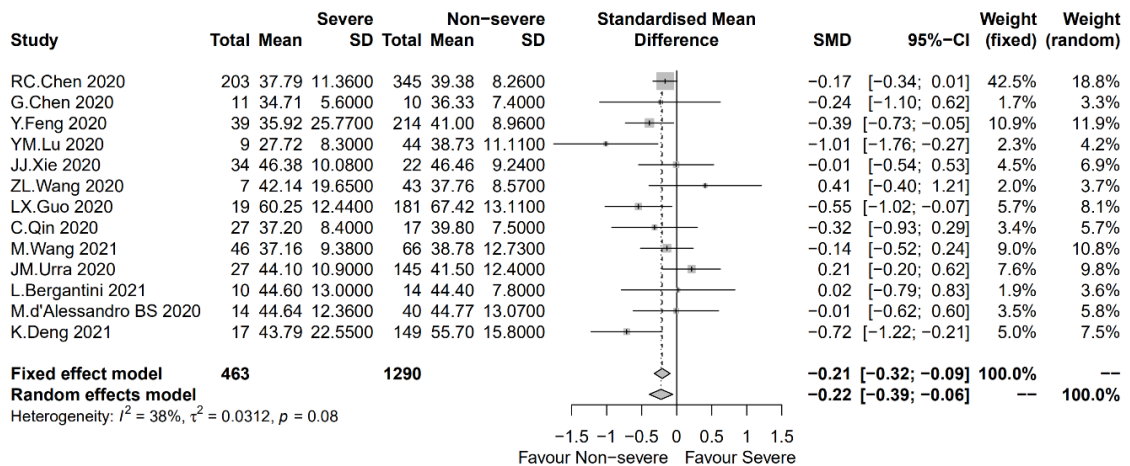
(13) CD3+T(%)



(14) CD4+T(ab)



(15) CD4+T(%)



(16) CD8+T(%)

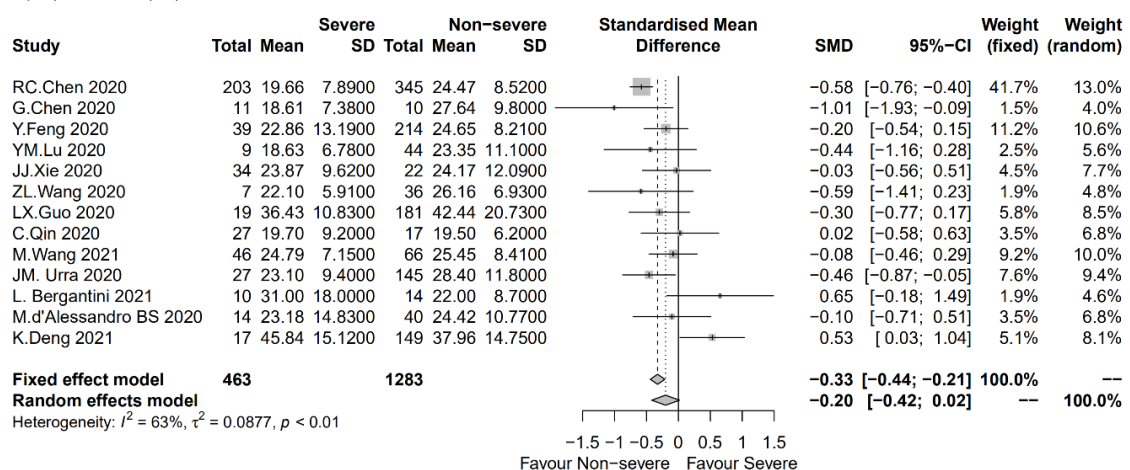
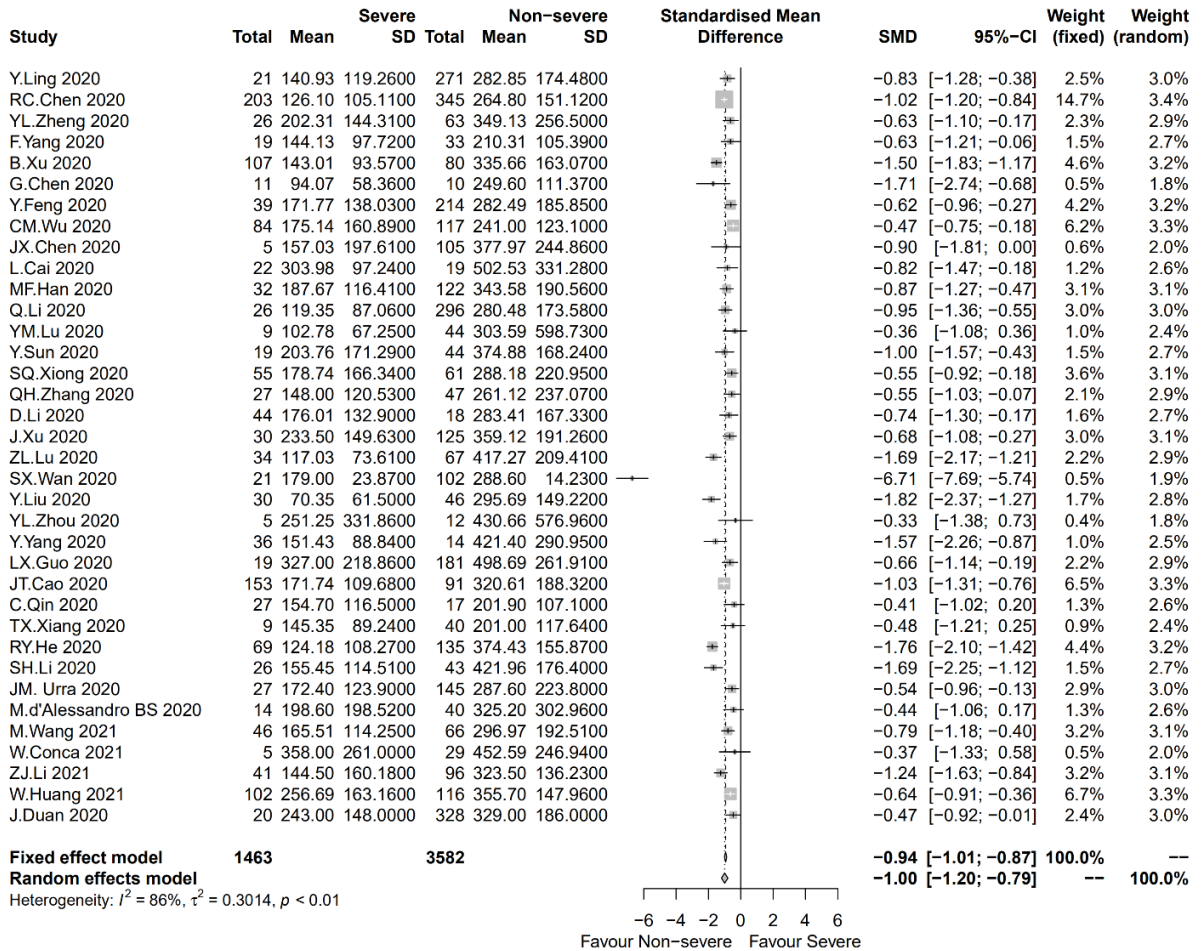
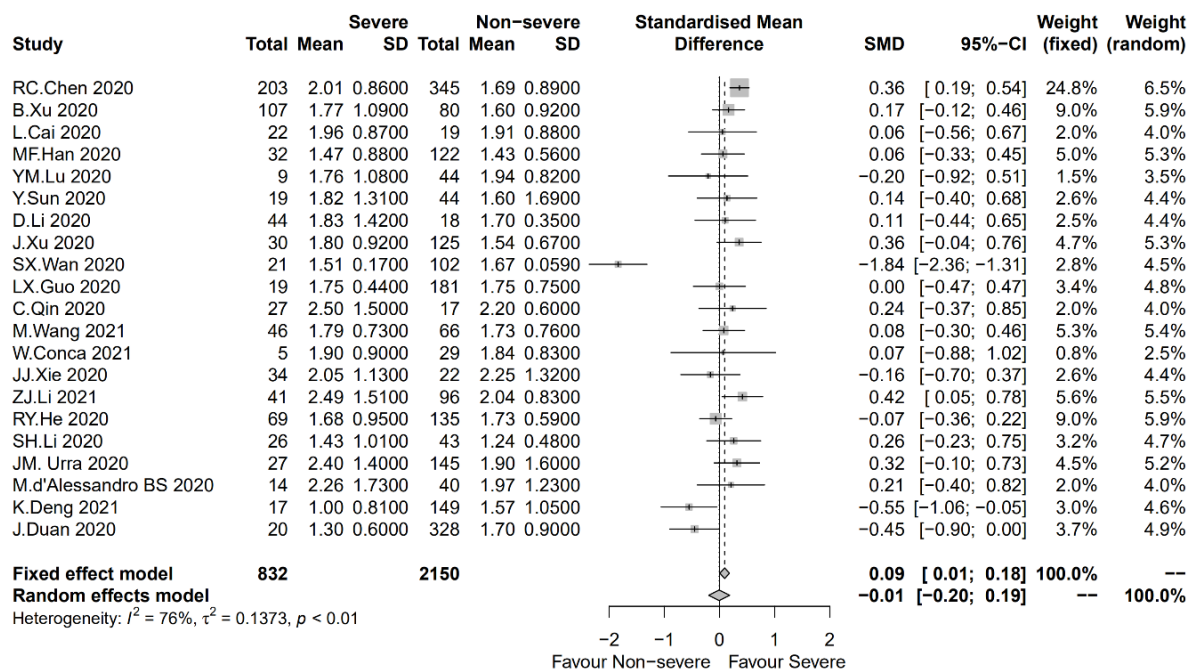


Figure E2(A) (Continued)

(17) CD8+T(ab)



(18) CD4+T/CD8+T ratio



(19) B cell(ab)

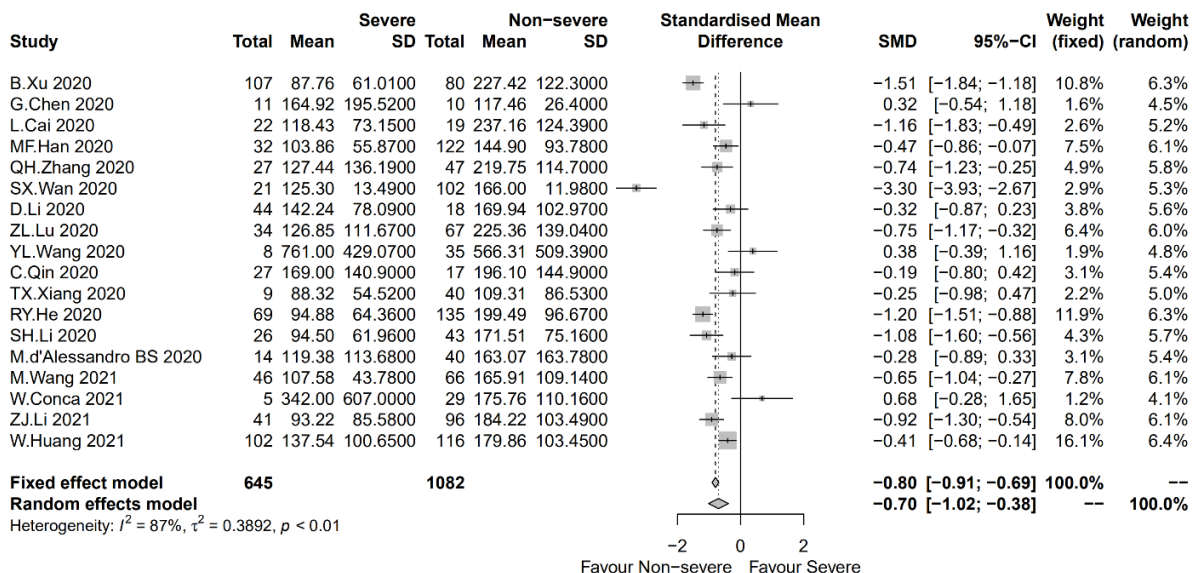
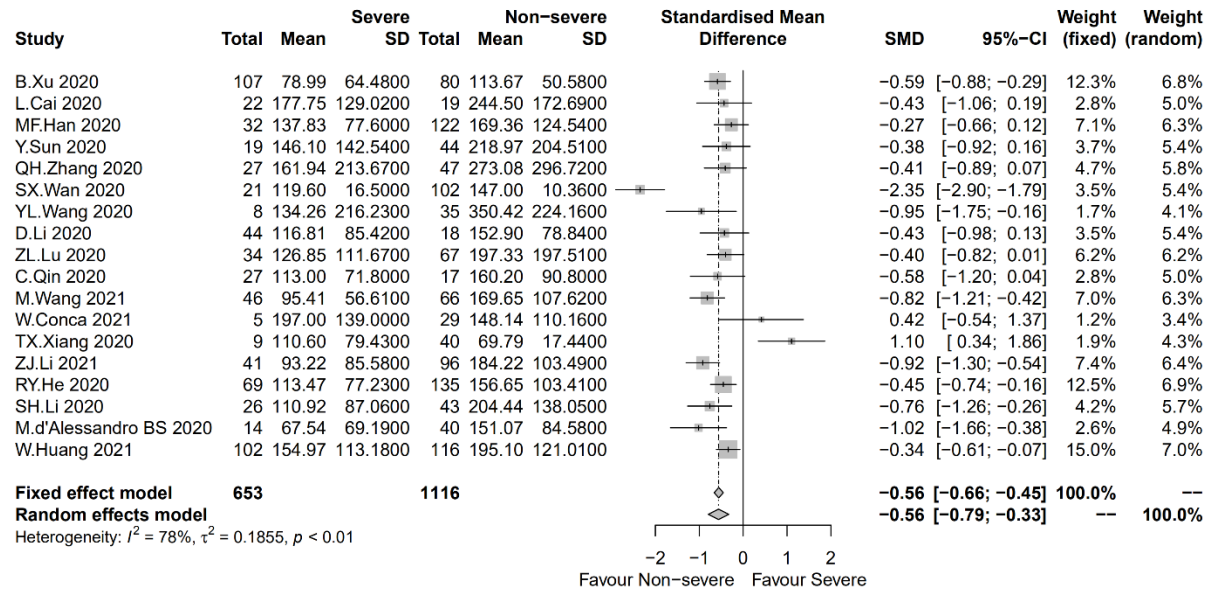
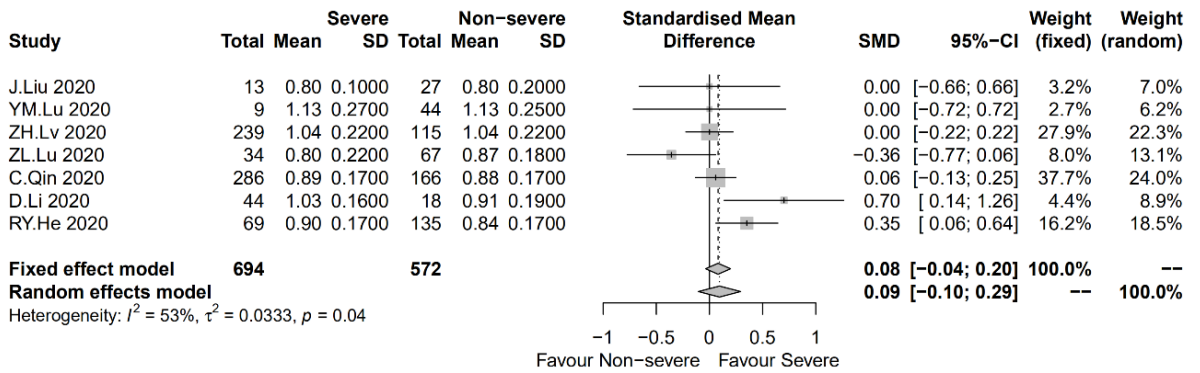


Figure E2(A) (Continued)

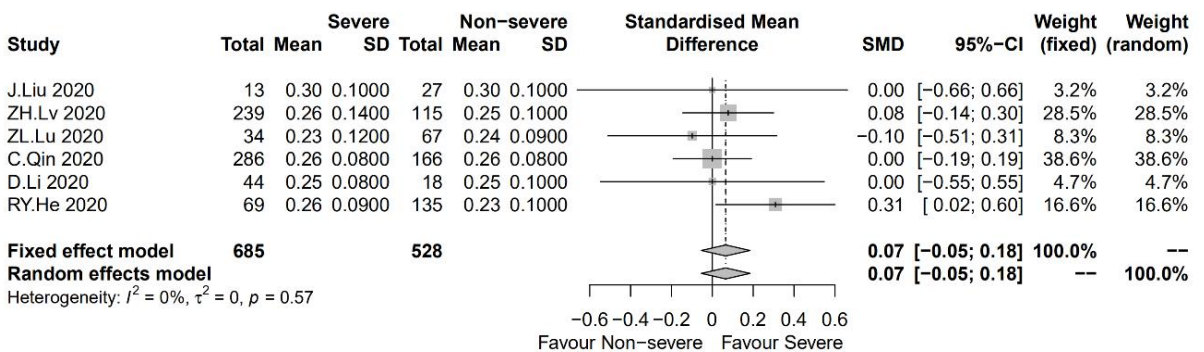
(20) NK cell (ab)



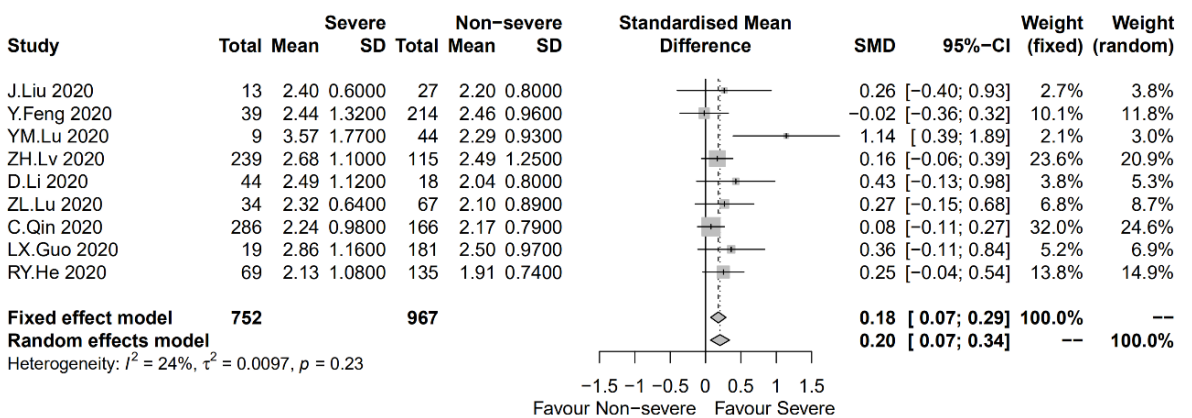
(21) C3



(22) C4



(23) IgA



(24) IgM

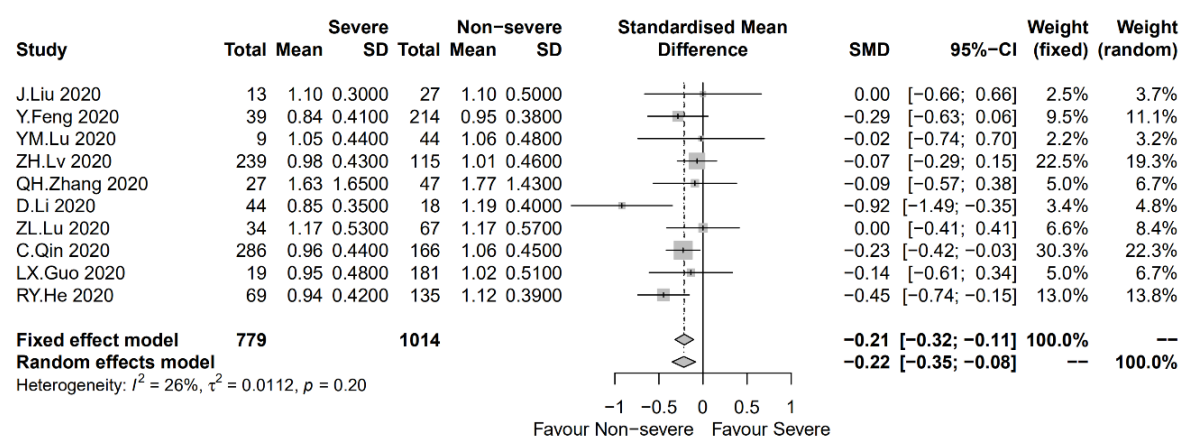
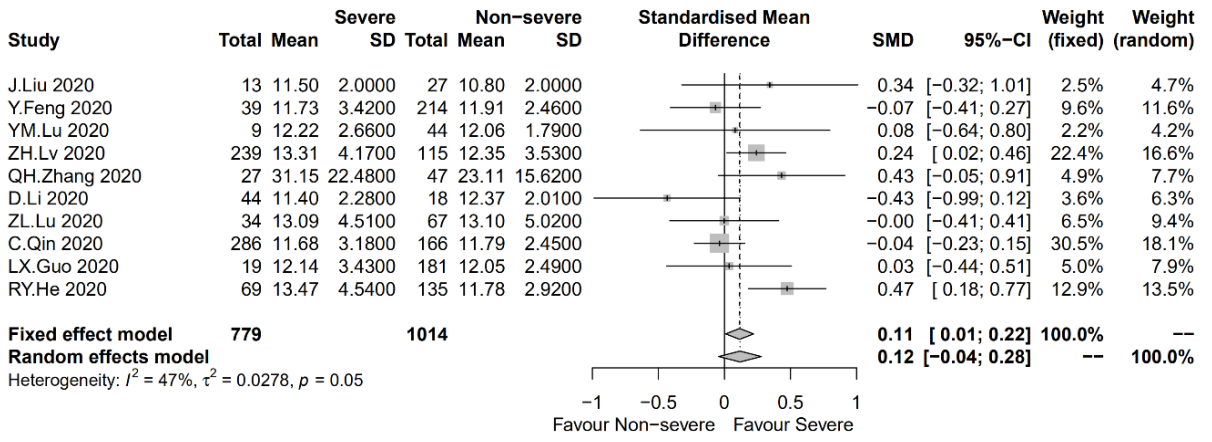


Figure E2(A) (Continued)

(25) IgG



(26) IgE

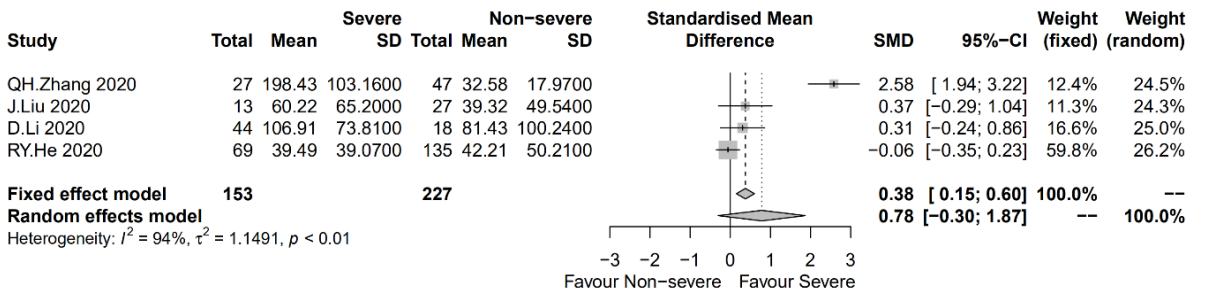
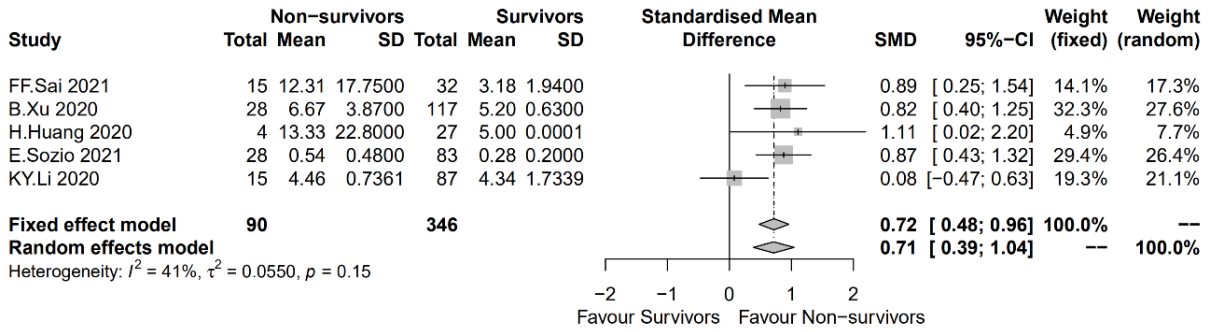
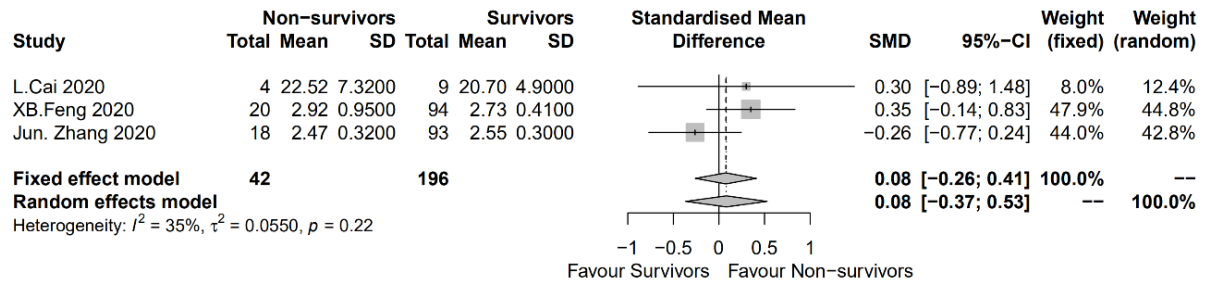


Figure E2(B) Forest plot of immunological parameters in non-survivors and survivors of COVID-19

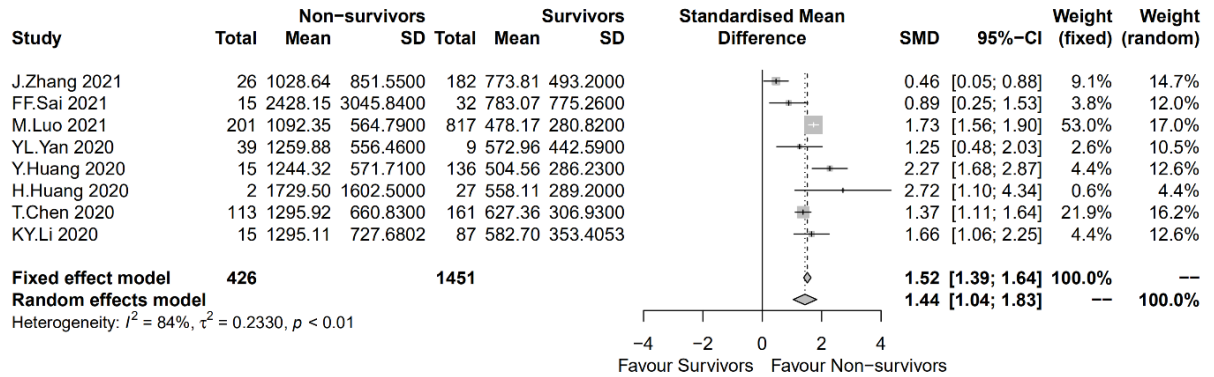
(1) IL-1 β



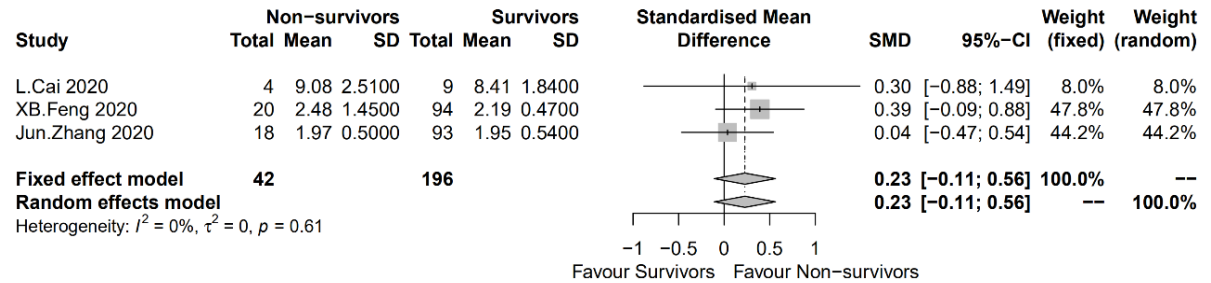
(2) IL-2



(3) IL-2R



(4) IL-4



(5) IL-6

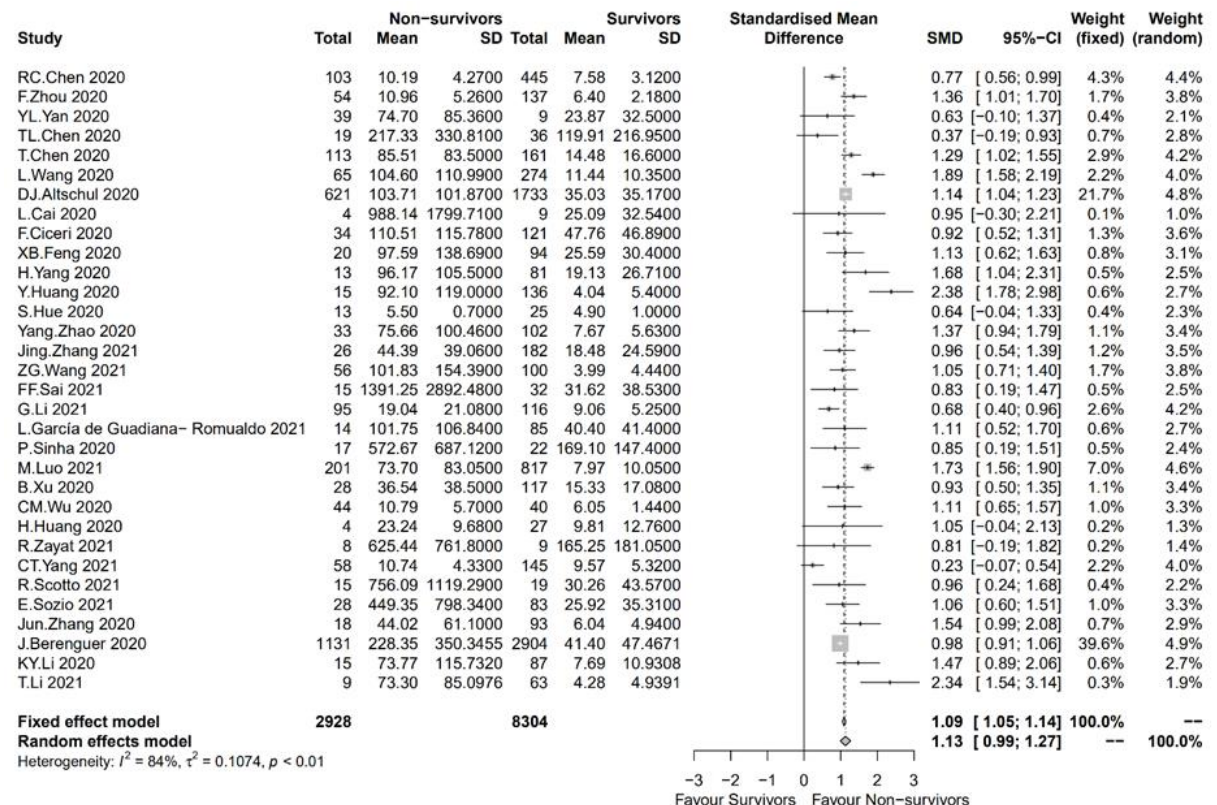
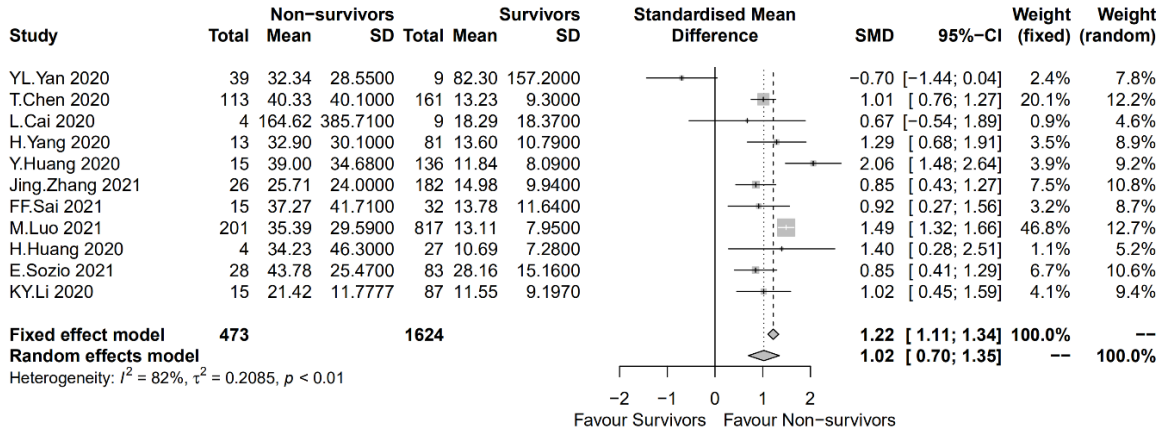
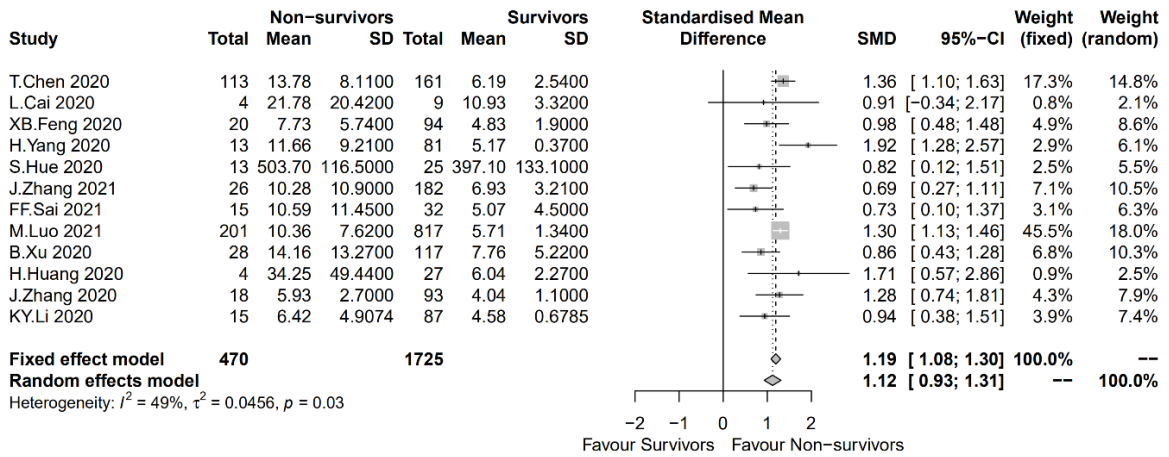


Figure E2(B) (Continued)

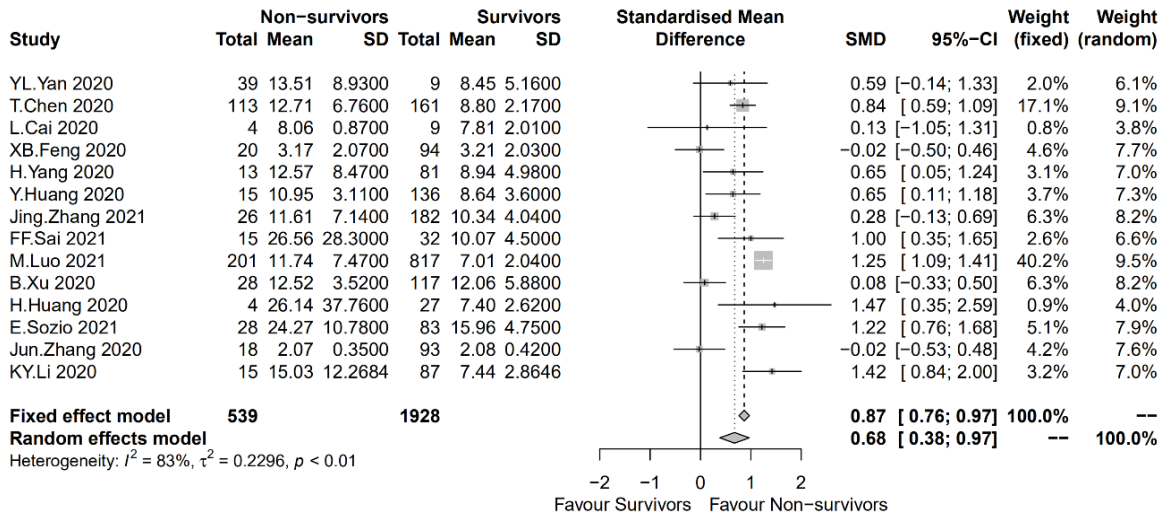
(6) IL-8



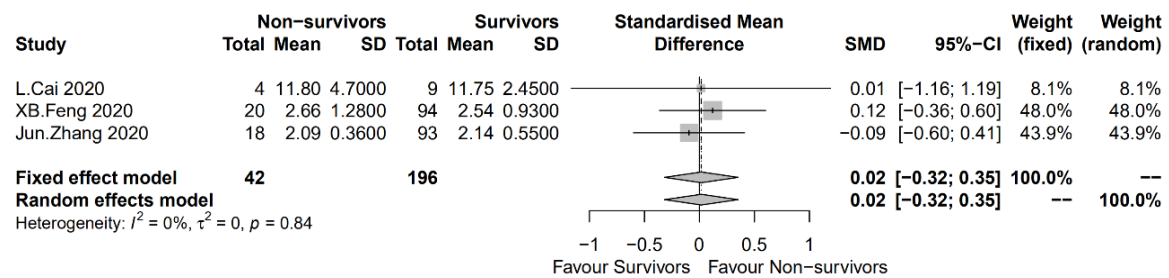
(7) IL-10



(8) TNF-α



(9) IFN-γ



(10) CD3+T(ab)

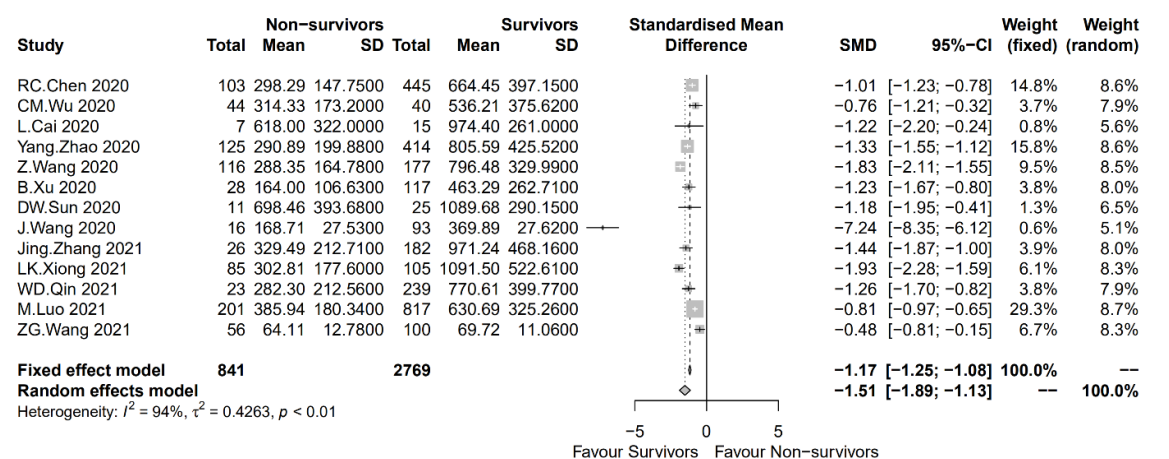
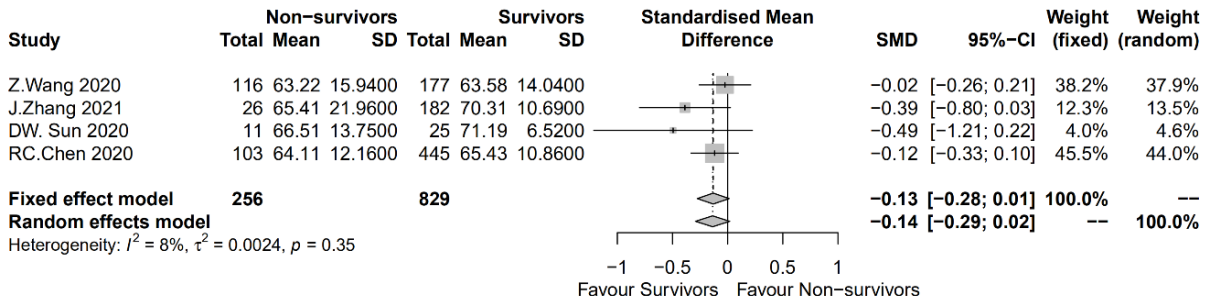
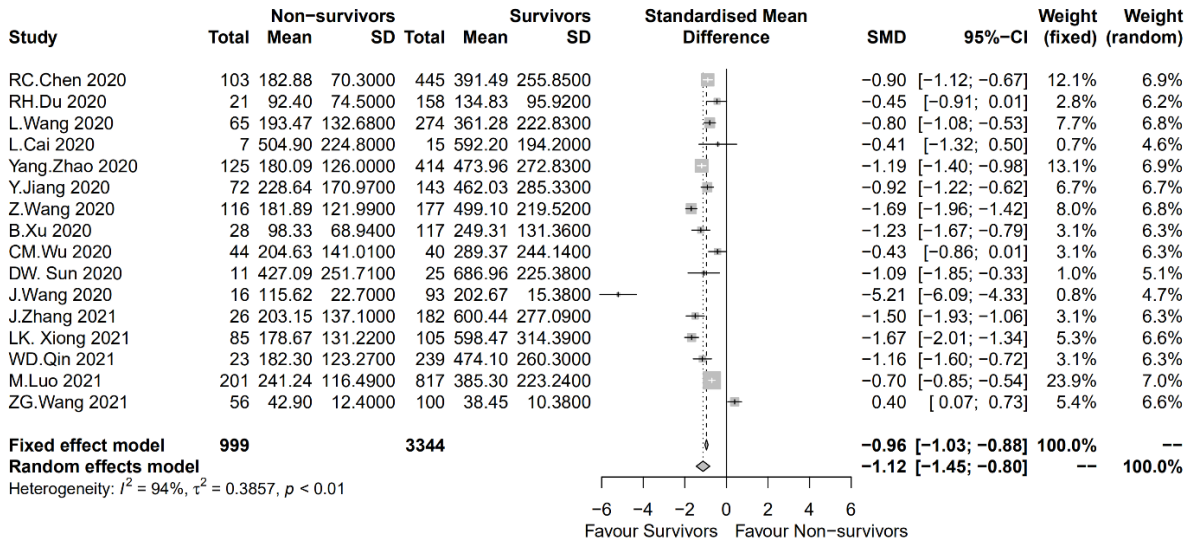


Figure E2(B) (Continued)

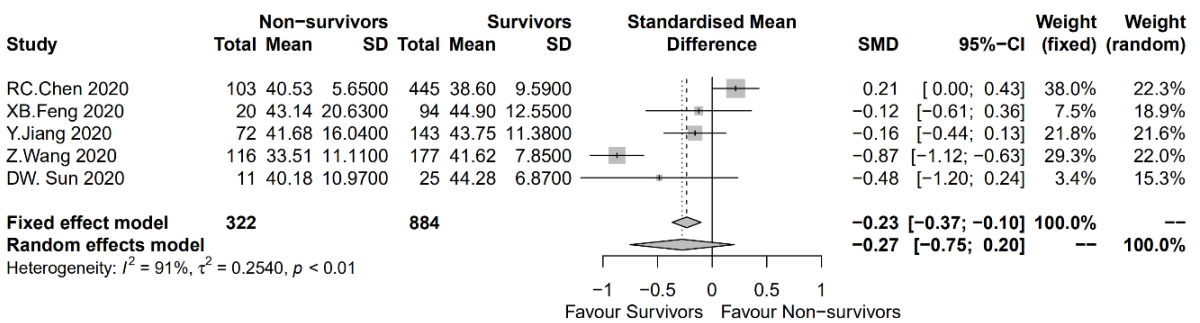
(11) CD3(%)



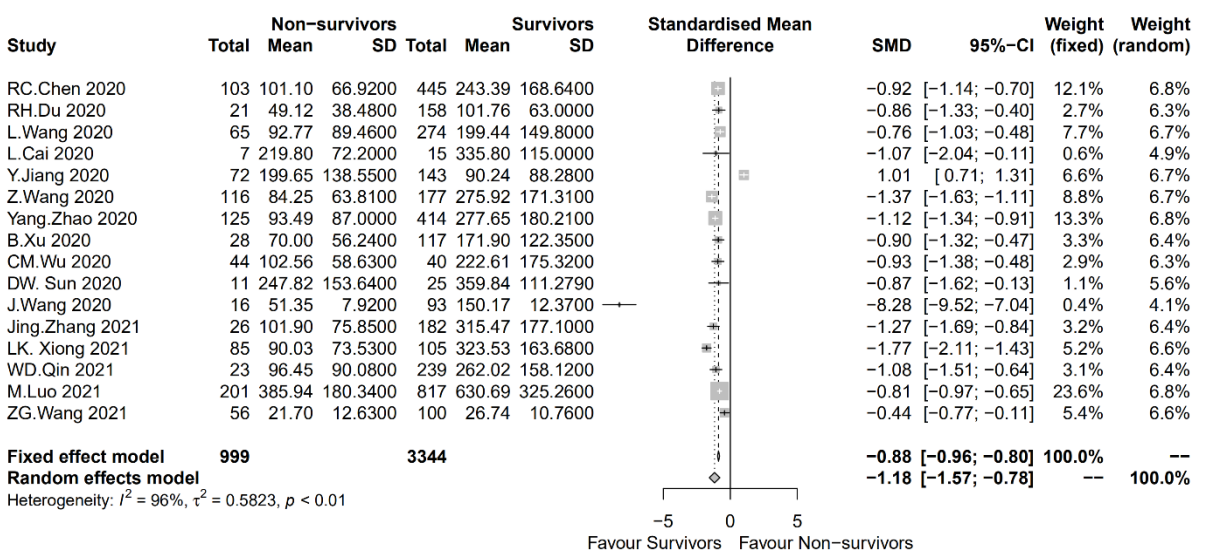
(12) CD4+T(ab)



(13) CD4+T(%)



(14) CD8+T(ab)



(15) CD8+T(%)

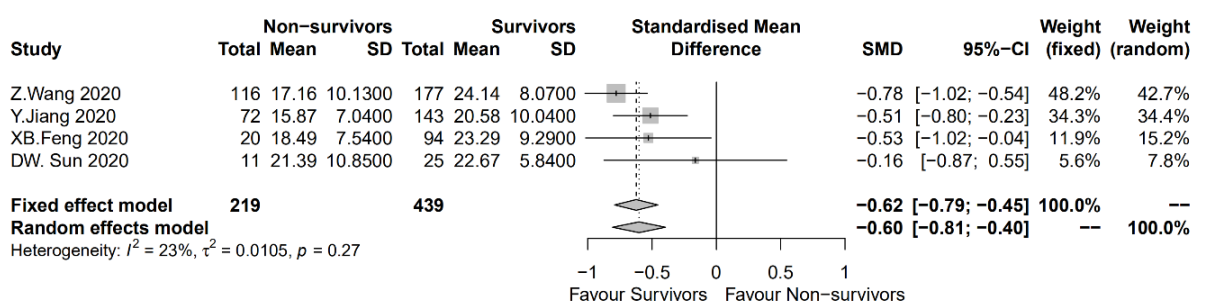
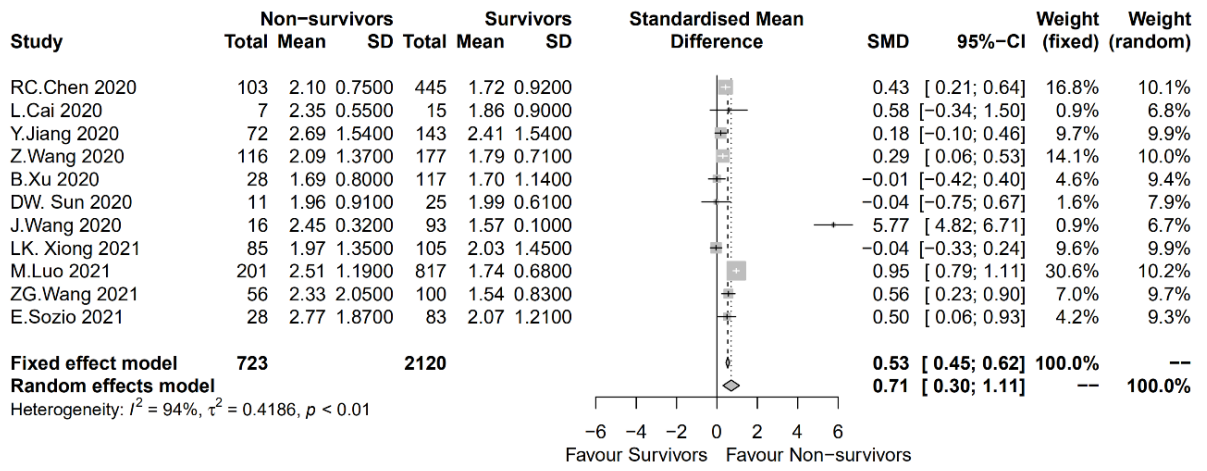
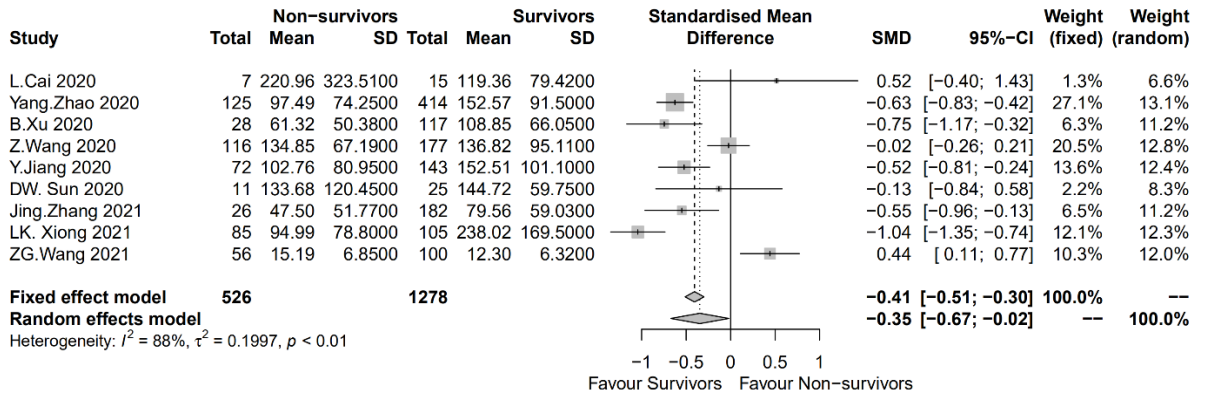


Figure E2(B) (Continued)

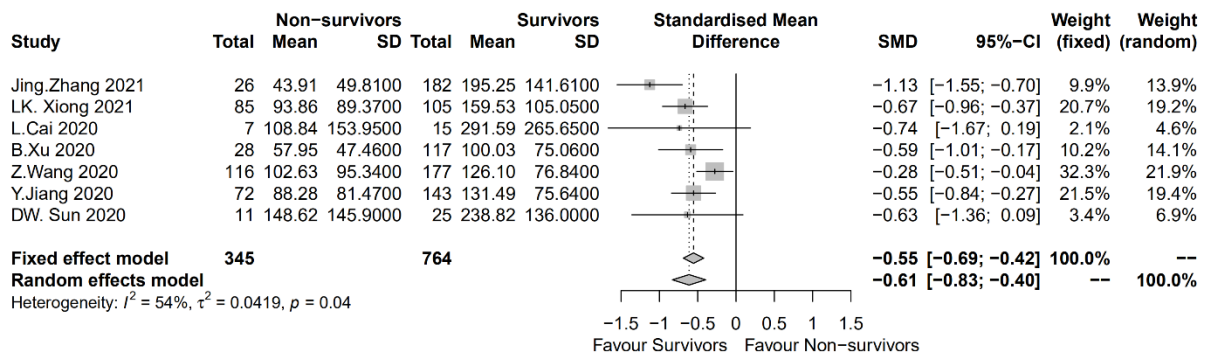
(16) CD4+T/CD8+T ratio



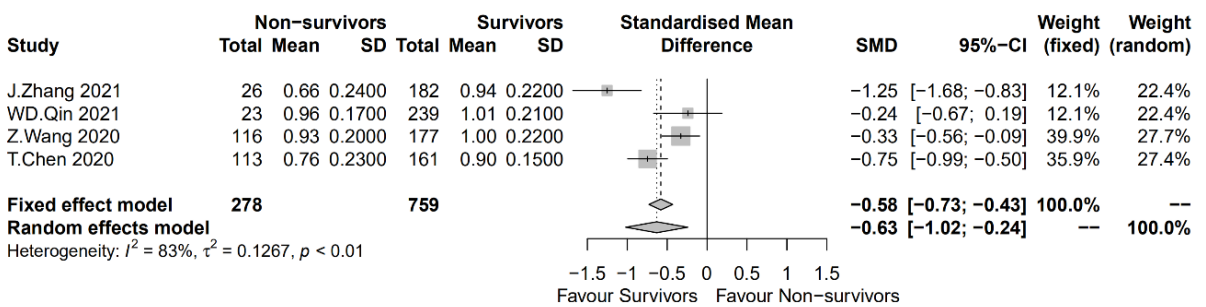
(17) B cell(ab)



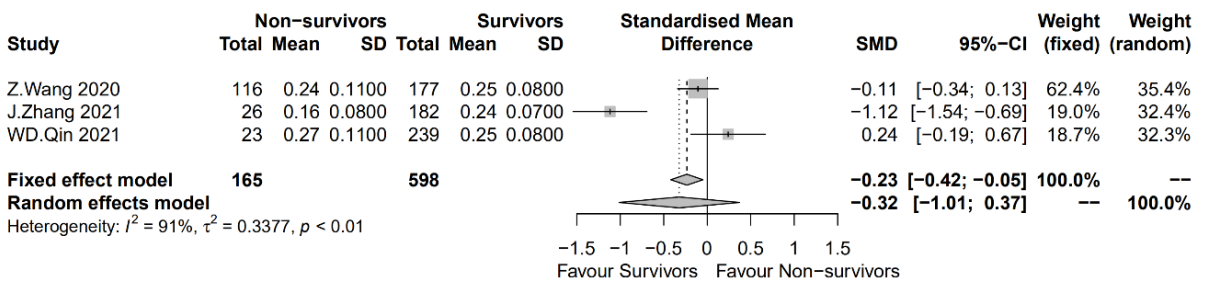
(18) NK cell(ab)



(19) C3



(20) C4



(21) IgA

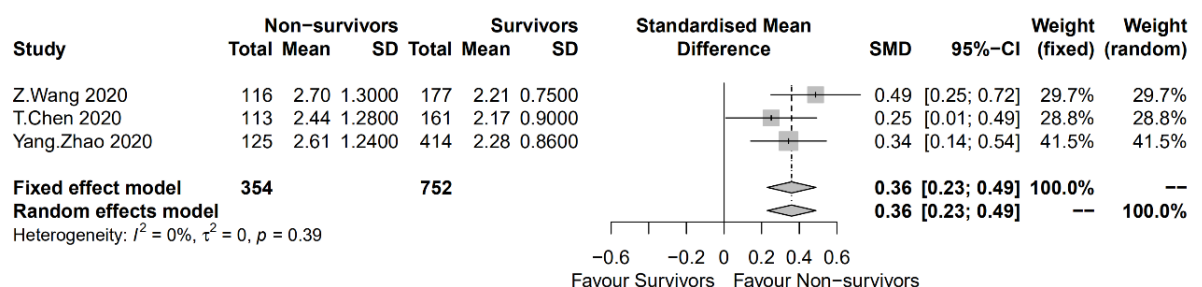
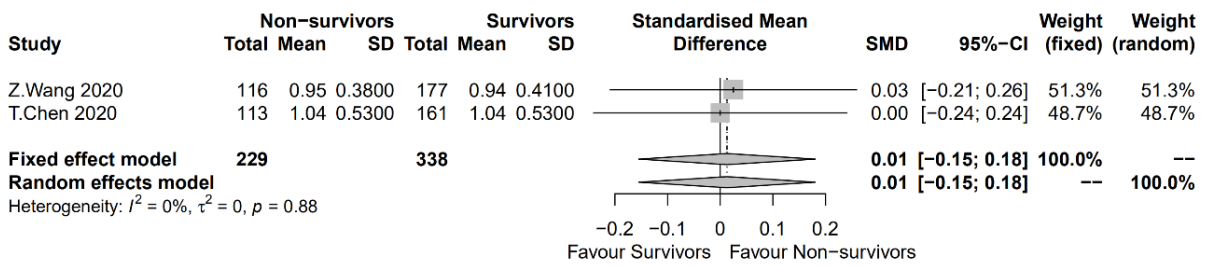


Figure E2(B) (Continued)

(22) IgM



(22) IgG

