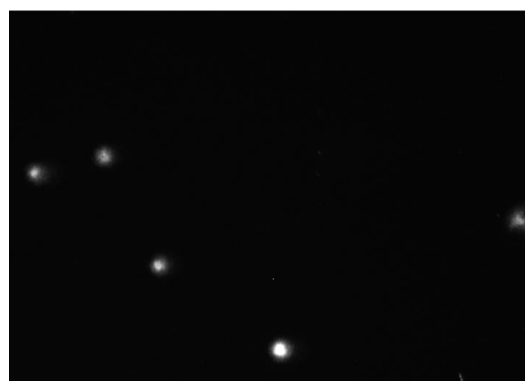
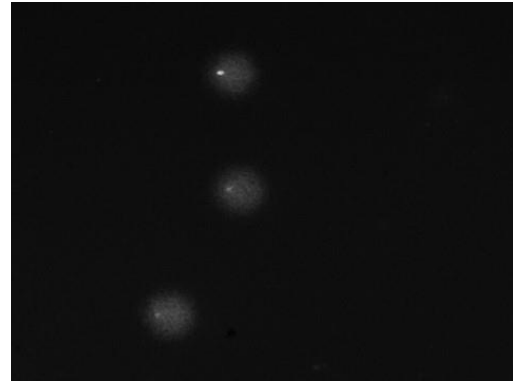


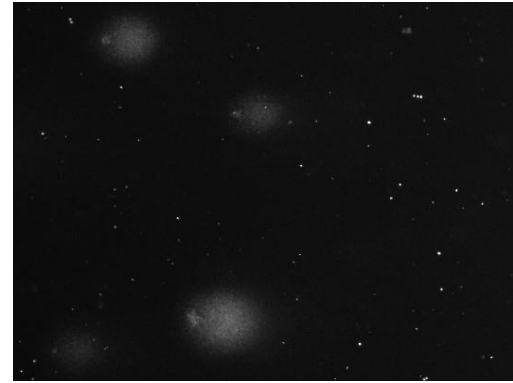
Figure S1. The impact of increasing concentrations of  $\text{H}_2\text{O}_2$  on formation of comets from nuclei embedded in LMP agarose in the alkaline comet assay



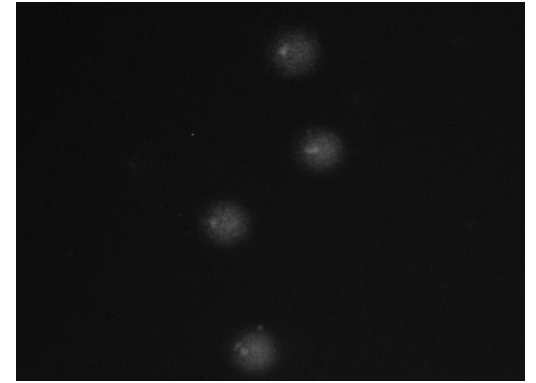
0  $\mu\text{M}$



50  $\mu\text{M}$



100  $\mu\text{M}$



250  $\mu\text{M}$

$\text{H}_2\text{O}_2$