

Figure S2

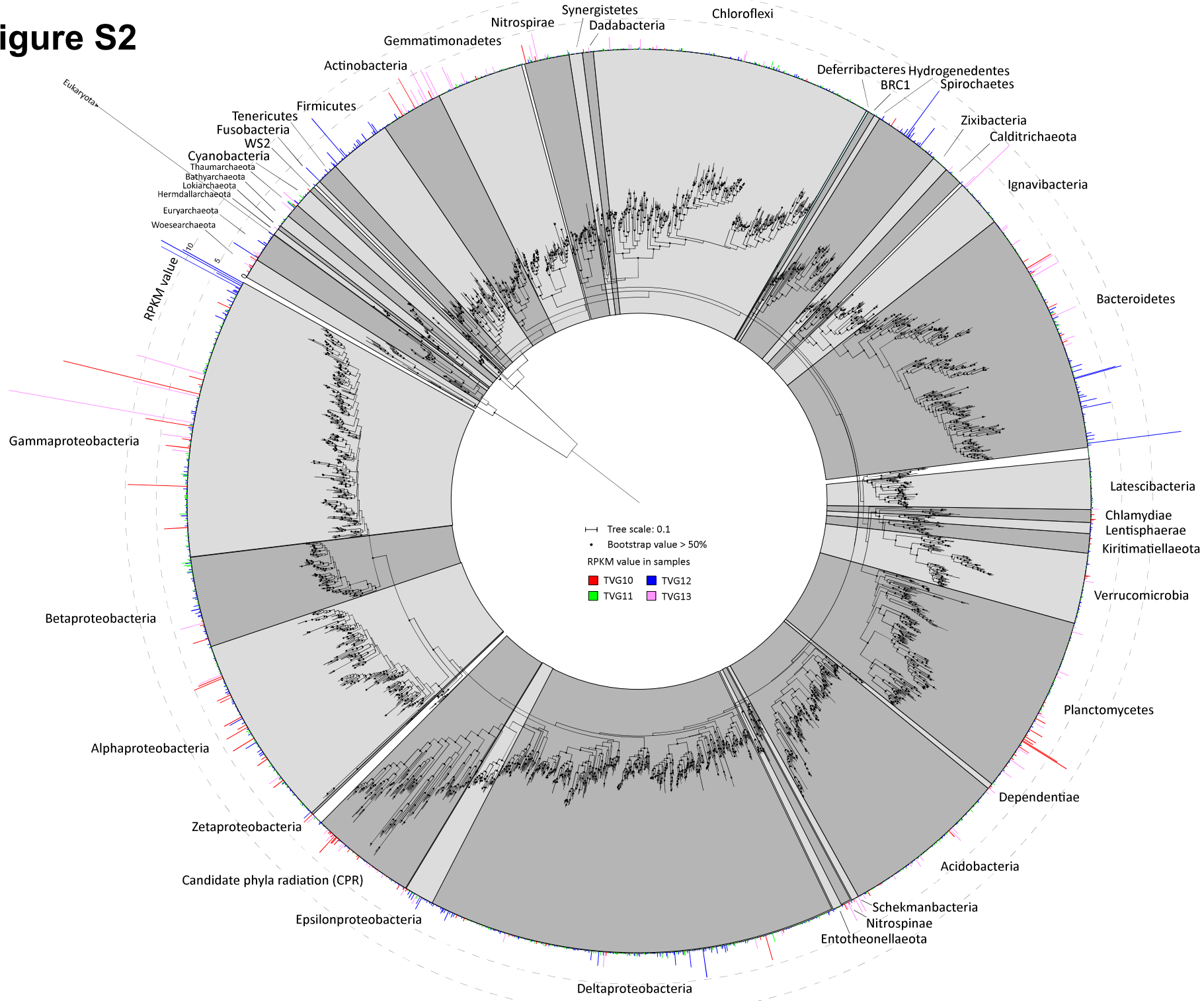


Figure S3

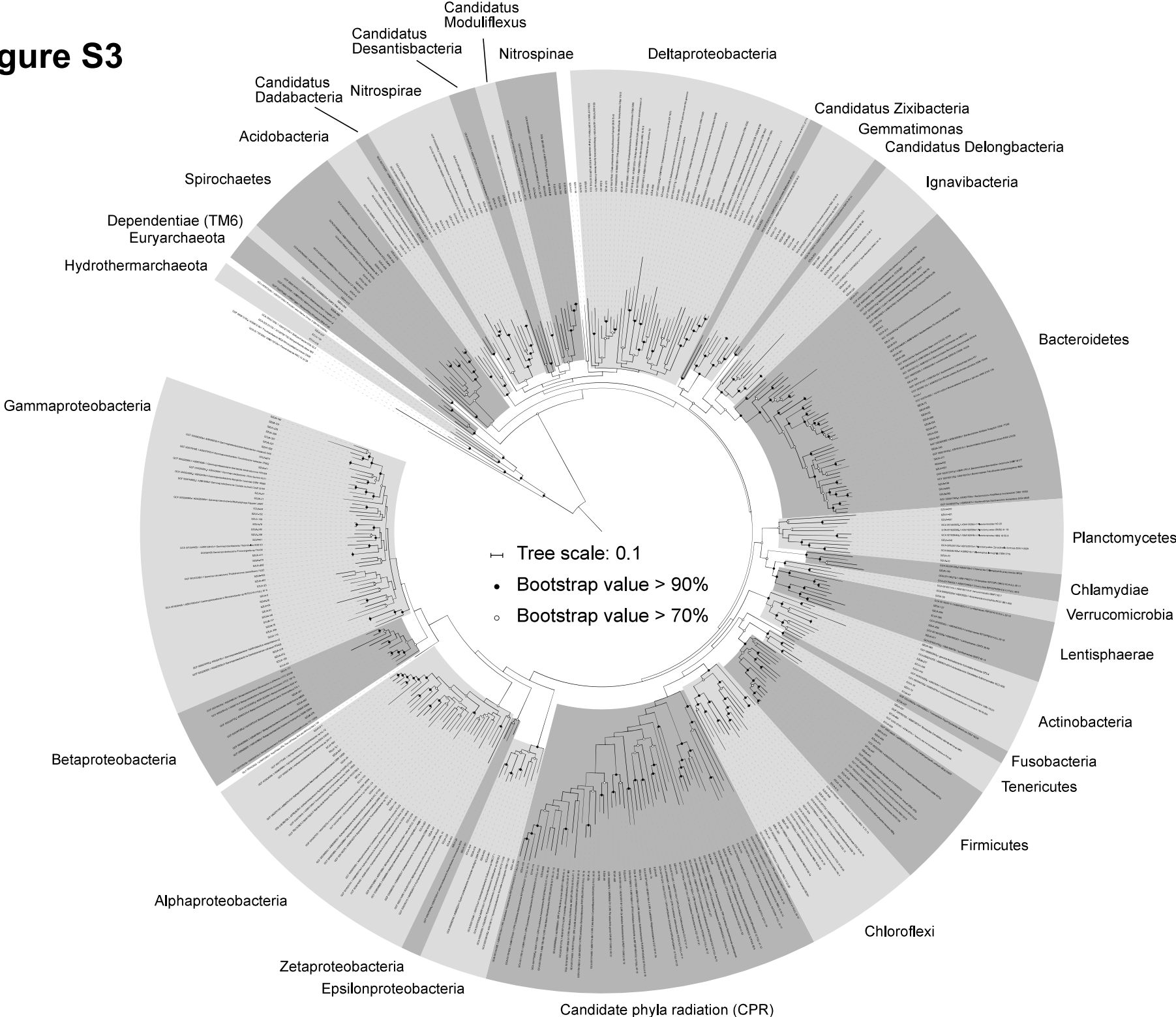


Figure S4

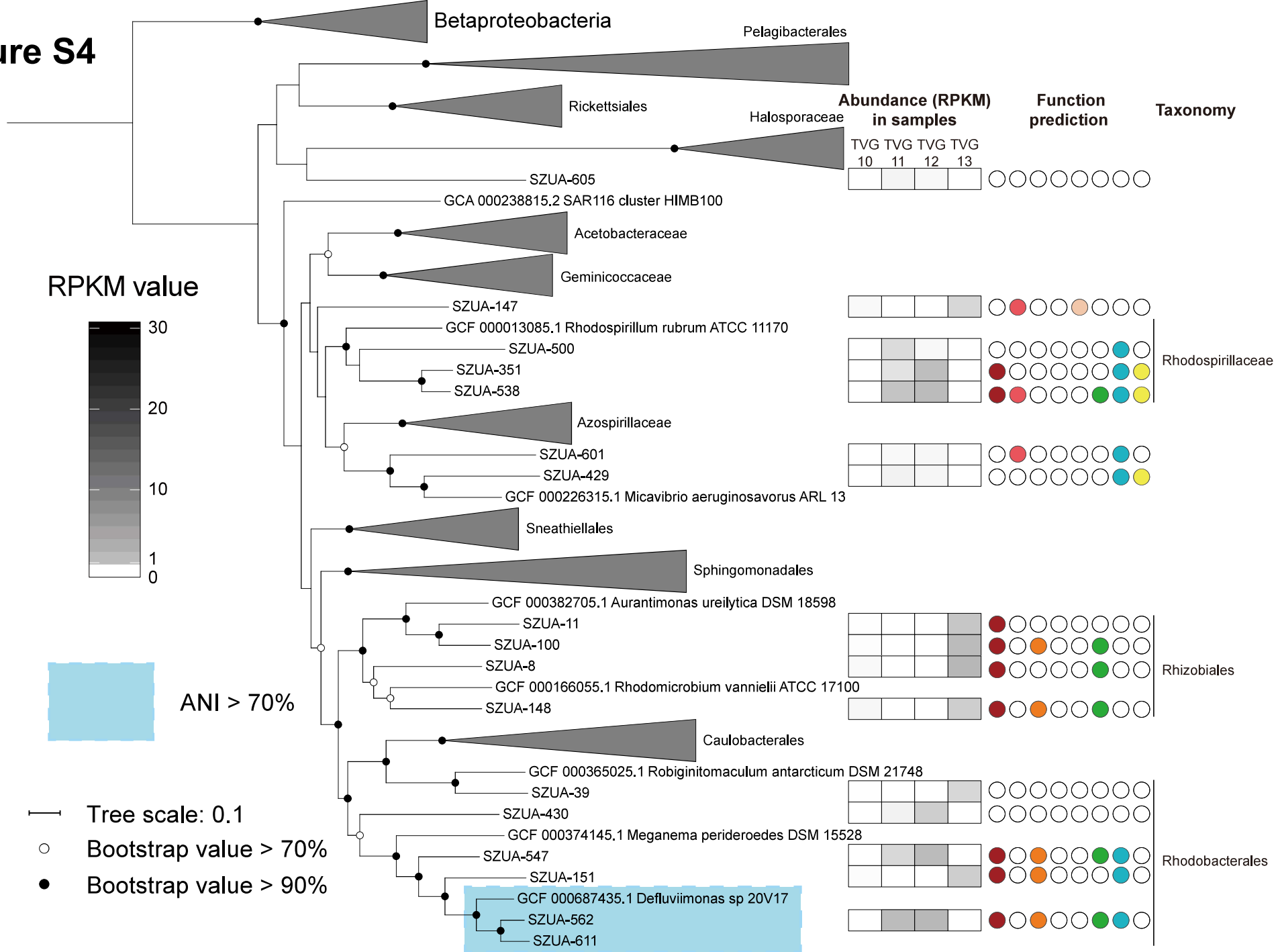


Figure S5

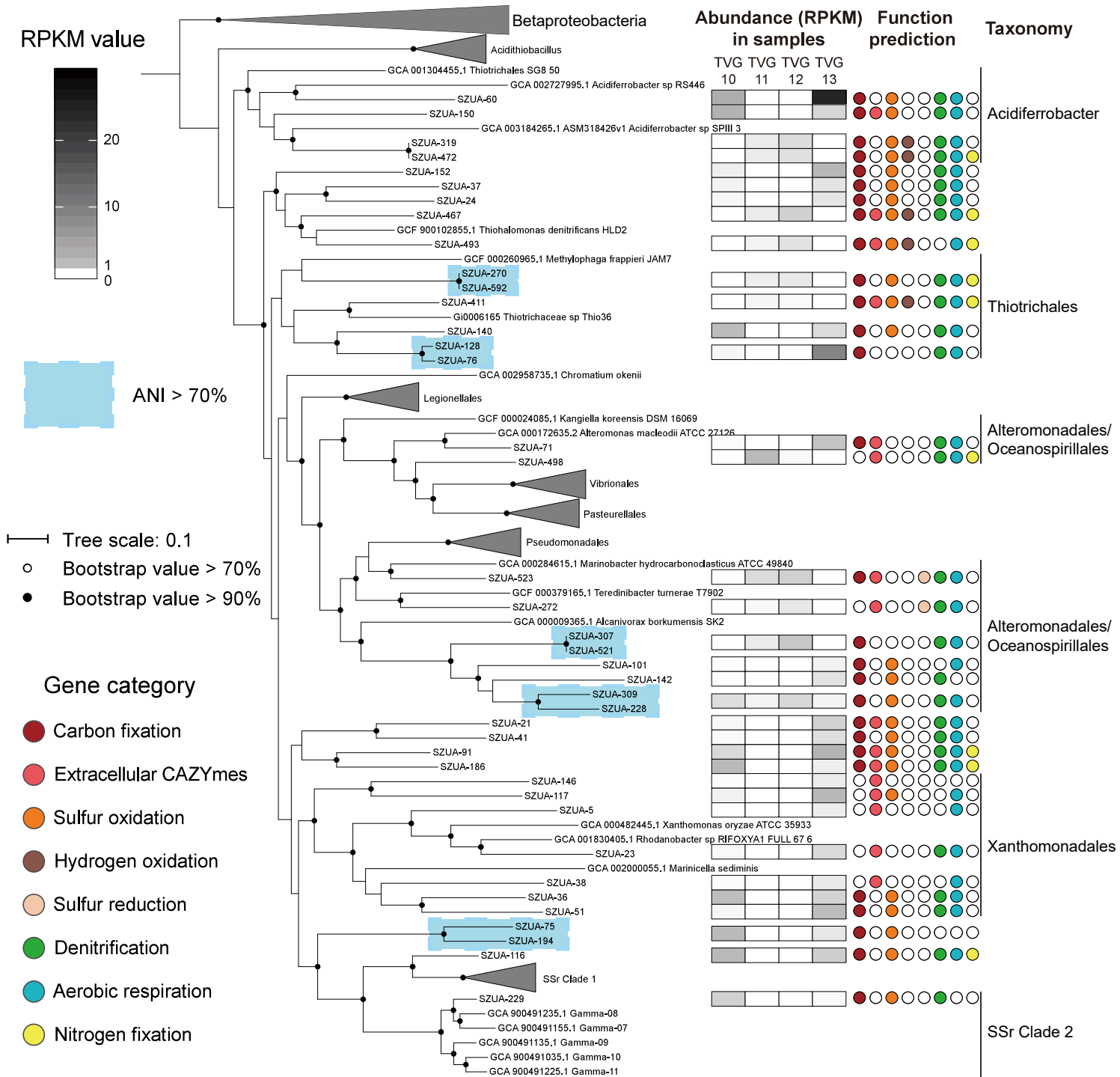


Figure S6

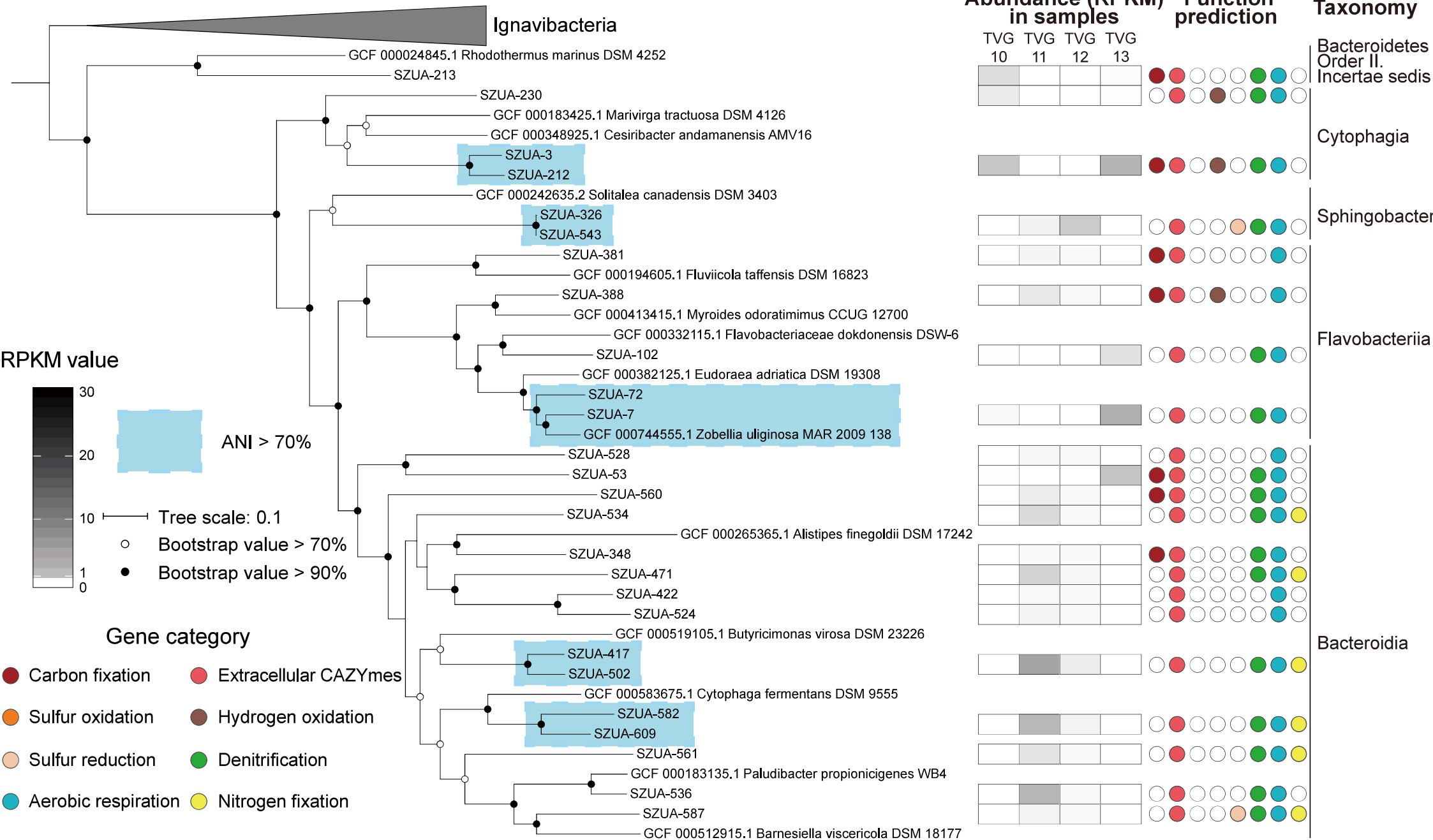


Figure S7

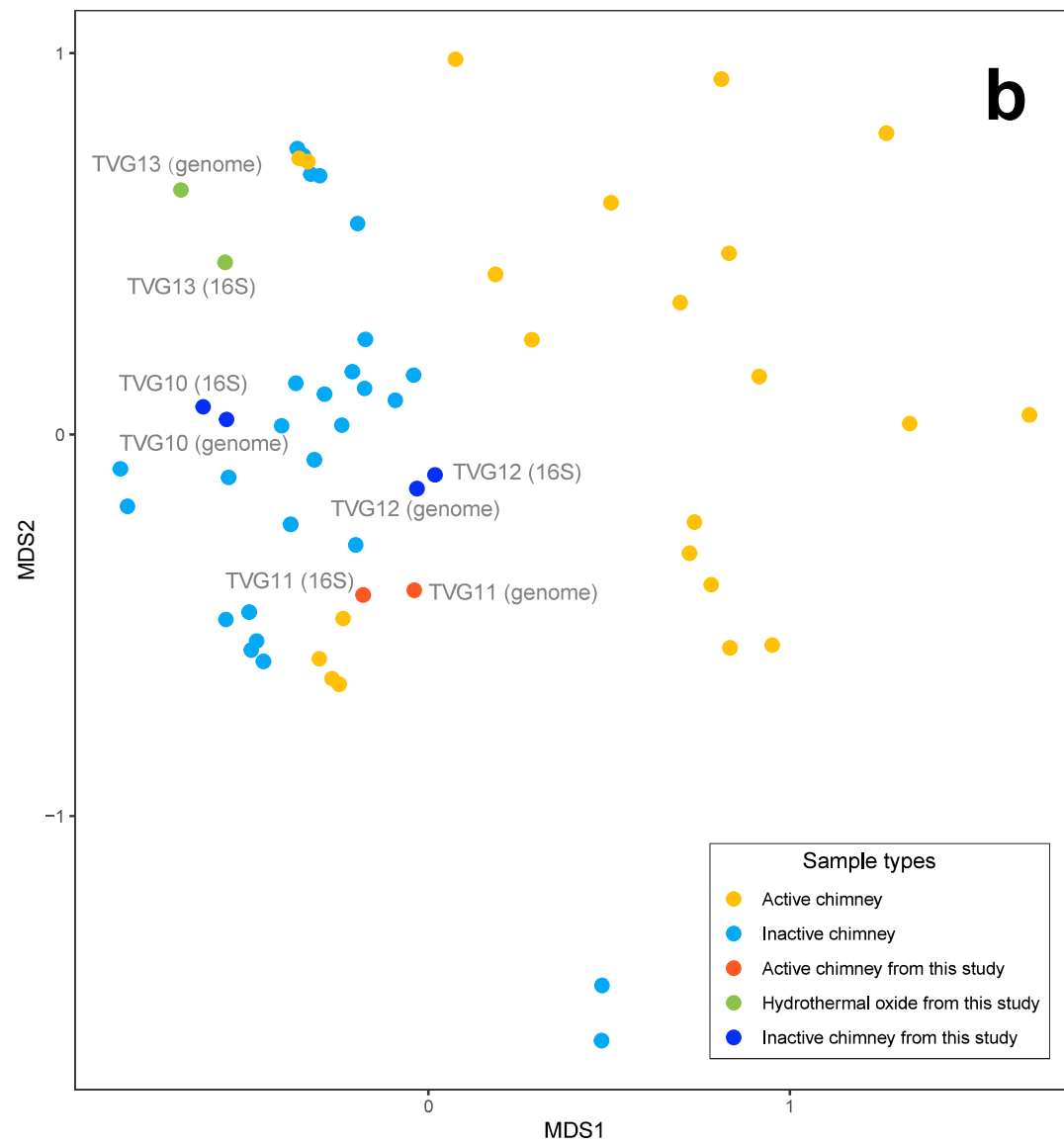
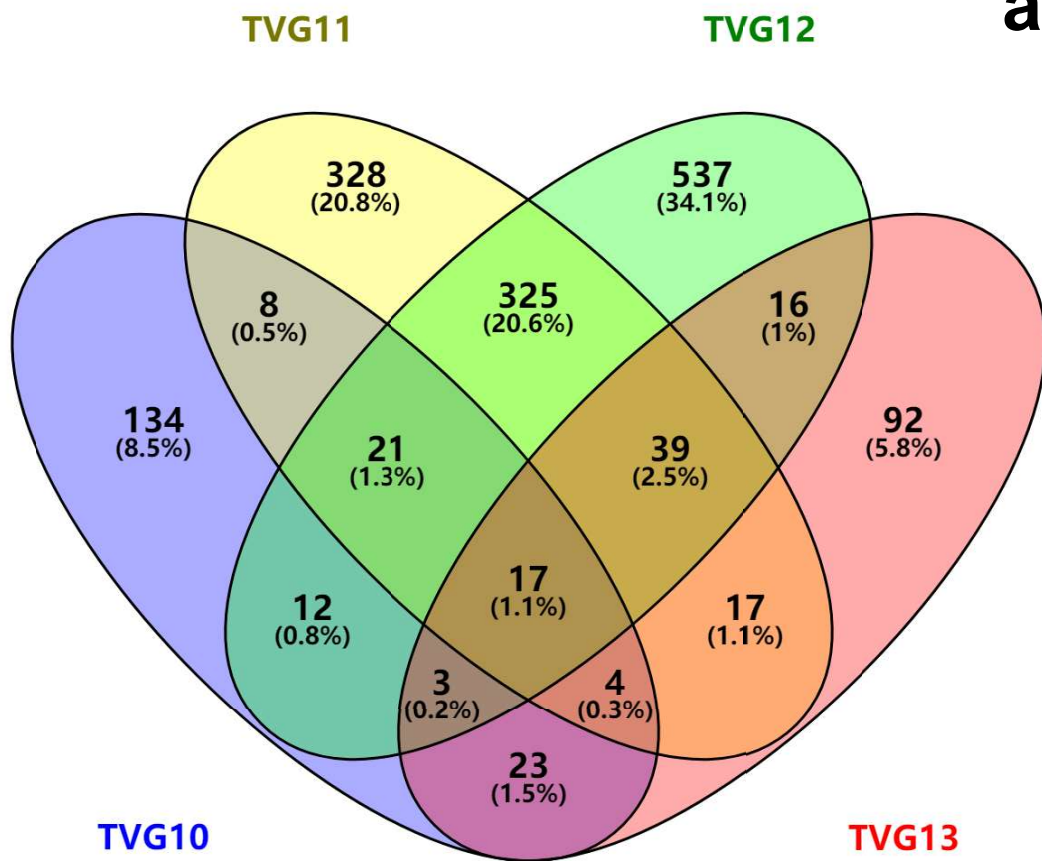


Figure S8

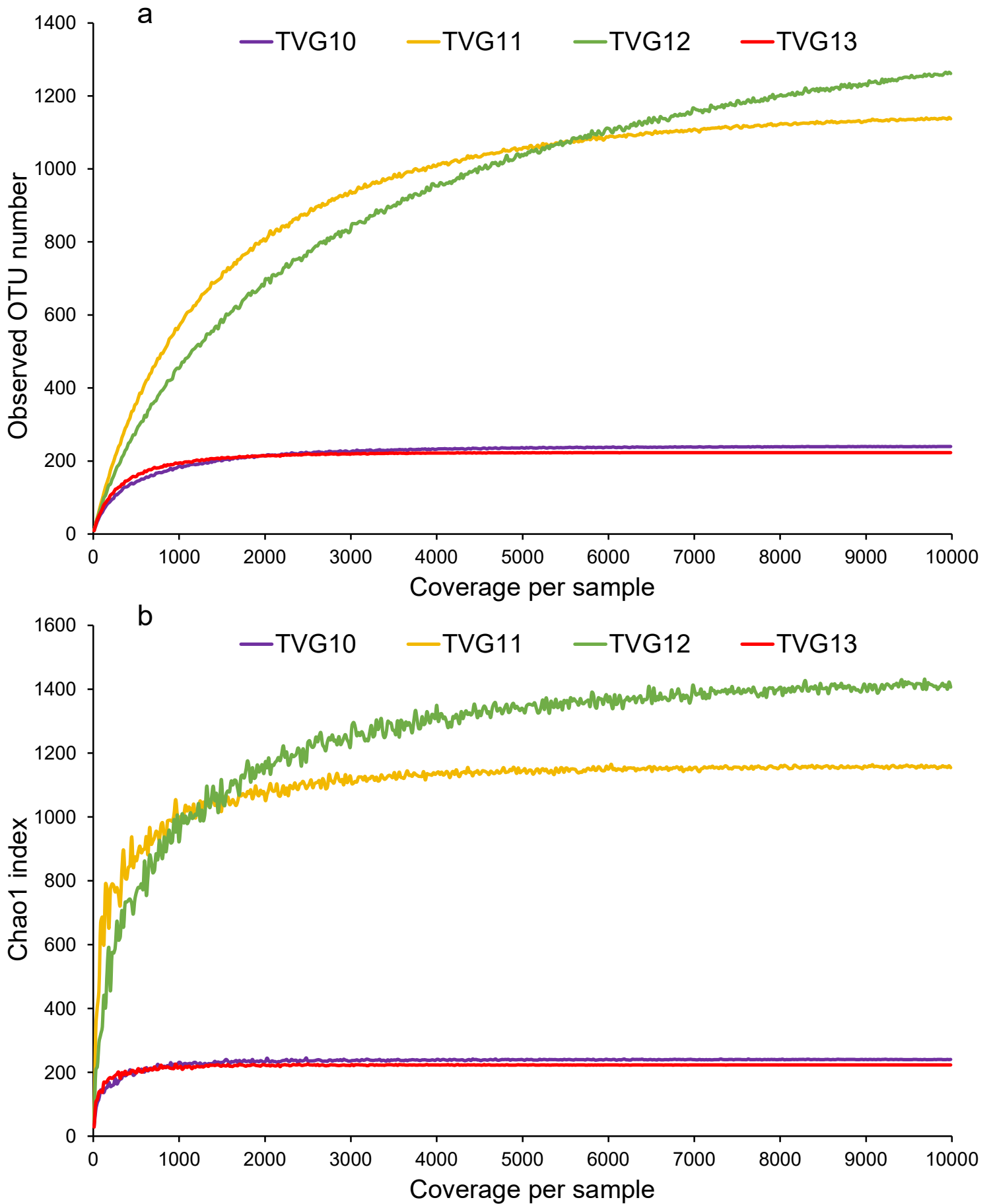
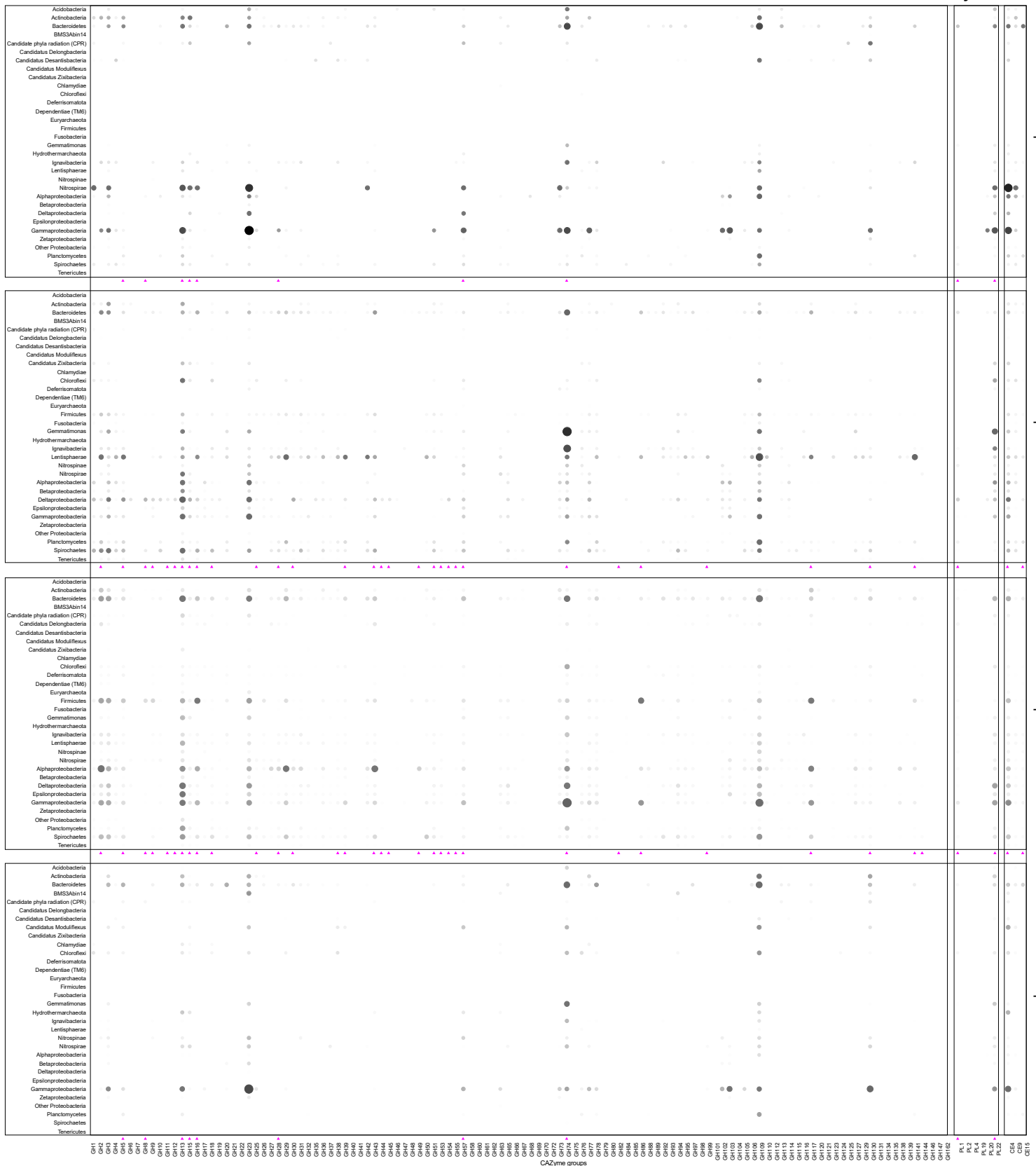


Figure S10



Glycoside hydrolase

Polysaccharide lyase Carbohydrate esterase



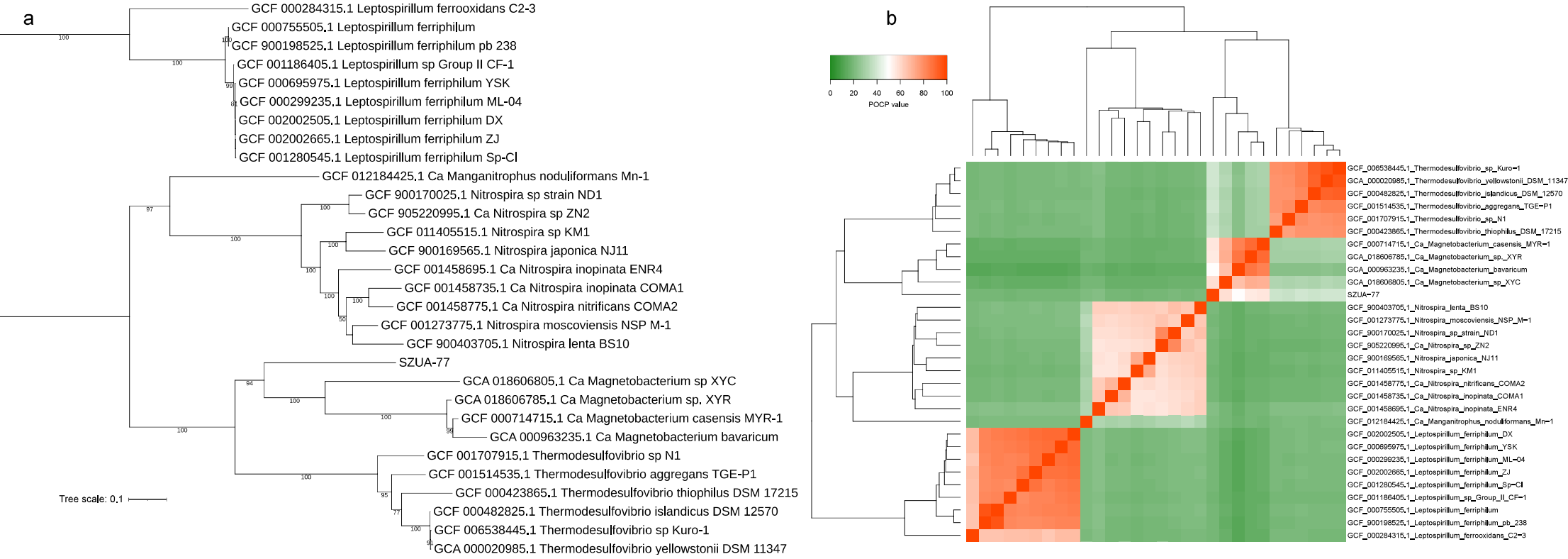
TVG10

TVG11

TVG12

TVG13

Figure S11



a

Figure S12

Methods	Command settings
bin1	--minContig 2500
bin2	--minContig 2500 --verysensitive
bin3	--minContig 1500
bin4	--minContig 1500 --verysensitive
bin5	--minContig 1500 --verysensitive -B 20
bin6	--minContig 1500 -B 20 --specific
bin7	--minContig 1500 -B 20 --specific --pB 20
bin8	--minContig 1500 -B 20 --specific --pB 5
bin9	--minContig 2500 --superspecific
bin10	--minContig 2500 --superspecific -B 20
bin11	--minContig 2500 --superspecific -B 20 --pB 20
bin12	--minContig 2500 --superspecific -B 20 --pB 5 --very

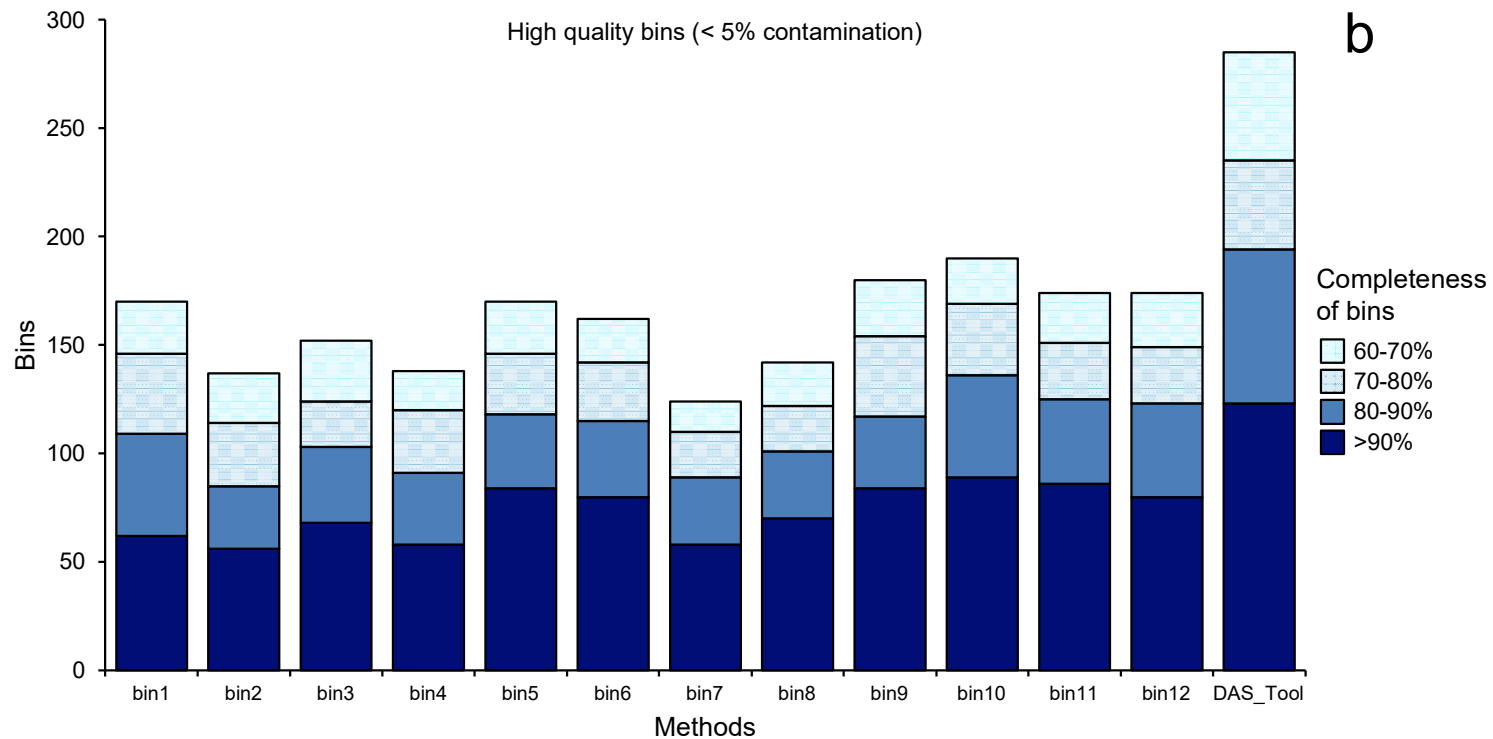


Figure S13

