

# Supplementary Figures

## 中国临床医学本科生在线学习情况调查（学生版）

此问卷处于停止状态，仅供浏览，请勿填写！

亲爱的同学们：

你们好！新冠肺炎疫情发生以来，你们度过了一个不同寻常的寒假。你们的许多老师或学长学姐，也是我们百余所医学院校近300家附属医院上万名医务人员，他们驰援湖北驰援武汉进入抗击疫情第一线，成为最美“逆行者”。本次疫情，作为未来医生的你们，相信有特别多地体会与感受；也由于疫情，你们正在经历一次与往常不同的学习及教学经历。政府及高校为保障教学的平稳有序进行，实现“停课不停教、停课不停学”，前期进行了大量的准备及努力工作。我们每个人都是这个历史性新学期的见证者。为完善在线教学，也为聆听你们的声音，我们设计了本次调查问卷。

(1) 问卷数据仅供研究使用，相关研究结果仅用于相关部门决策。请按照你的真实情况和想法作答。对所提供的信息，我们将依照《统计法》严格保密，绝不透露给其他任何人。

(2) 问卷匿名填答，问卷填写均无对错之分。

(3) 问卷填写大约需要8分钟。

让我们坚持向学、共克时艰，也祈祷我们在疫情一线的老师平安归来。为他们加油，为中国加油！

如有相关问题或建议可联系：吴老师，wuhongbin@pku.edu.cn。

在填答后我们设置了随机抽奖以获得红包奖励，红包金额和红包个数将根据参与的学生数实时调整。

感谢大家的支持，也祝大家身体健康、学业顺利！

全国医学教育发展中心  
在线教学调查课题组  
2020年2月18日

Figure S1: Online survey cover page

*Translation:*

### Survey on Online Learning of Undergraduate Clinical Medical Students in China (Student version)

Dear Students,

Greetings! Since the outbreak of the COVID-19 epidemic, you have had an extraordinary winter holiday. Many of your teachers or schoolmates are among the tens of thousands of medical workers from more than a hundred medical schools and nearly 300 affiliated hospitals ten who rushed to Hubei and Wuhan to serve at the frontline of the fight against the epidemic, and become the most beautiful “heroes in harm’s way.” For this epidemic, as future doctors, we believe you have a lot of experience and feelings; and because of the epidemic, you are experiencing a different learning and teaching experience than usual. The government and the universities have made a

lot of preparations and efforts to ensure the smooth and orderly progress of teaching and learning, and to achieve the goal of “ensuring learning uninterrupted when classes are disrupted.” Each of us is a witness to this historic new semester. In order to improve online teaching and to listen to your voices, we have designed this survey.

(1) The data from the questionnaire is for research purposes only, and the relevant findings will only be used for decision making in the relevant departments. Please answer the questionnaire according to your real situation and ideas. The information provided will be kept strictly confidential in accordance with the Statistical Law and will not be disclosed to anyone else.

(2) The survey will be completed anonymously, and there is no right or wrong answer.

(3) It will take approximately 8 minutes to complete the survey.

Let’s persevere in learning, overcome the challenges together, and pray for the safe return of our teachers who are at the frontline of the epidemic. Cheer for them, and cheer for China!

If you have any related questions or suggestions, contact: Professor Wu at wuhongbin@pku.edu.cn.

We have prepared lottery payments as compensation when you complete the survey.

Thank you for your support, and we wish you all good health and success in your studies!

National Center for Health Professions Education Development of China

Online Teaching Survey Task Force

February 20, 2020

新冠肺炎疫情发生以来，来自全国120多所高校近300家附属医院上万名医务人员（也是你们的老师）积极响应党中央号召，驰援湖北省特别是武汉市抗击疫情第一线，成为最美“逆行者”。他们许多人主动请缨，或是在接到命令时，几分钟，人就凑齐了。谁言医者皆文弱，不破疫情誓不回！医者，是勇敢的天使，因为医者，祖国除湖北地区外，在2月19日已经实现14连降。当然我们还有许许多多的医生，在本次疫情中体现出作为医者的担当，就像钟南山院士所说，他相信大多数中国医生都是英雄！



Figure S2: Nudge intervention text and image

*Translation:* Since the outbreak of COVID-19, tens of thousands of medical workers (and also your instructors) from nearly 300 hospitals affiliated with more than 120 universities across the country have responded positively to the call of the central government and rushed to the front line of the fight against the epidemic in Hubei Province, especially in Wuhan City, becoming the “heroes in harm’s way.” Many of them volunteered to serve in the frontline; and the recruitment was done in minutes. Who says that doctors are weak? Now you see that they will not return until the epidemic is fully controlled! The doctors are brave angels. Because of them, the number of confirmed cases has been decreasing in 14 consecutive days as of February 19. Of course there are many more doctors assuming their due responsibilities in this epidemic. As Zhong Nanshan said, we believe that (like Li Wenliang) most Chinese doctors are heroes!

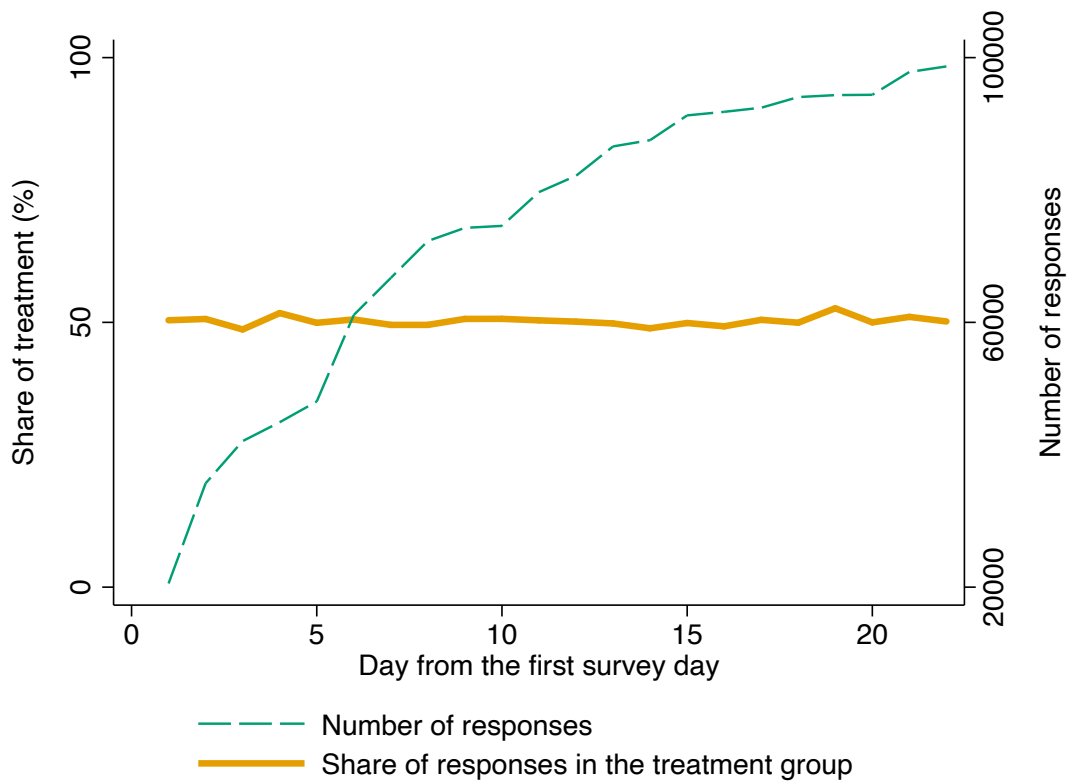


Figure S3: Number of responses and share of responses in the treatment group by survey date

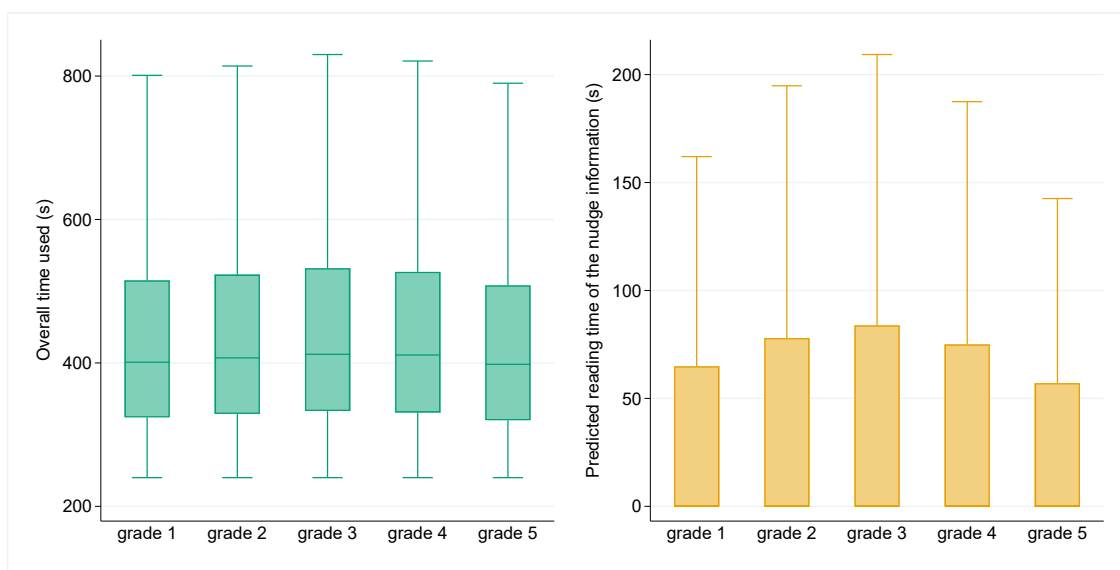


Figure S4: Overall time spent on the survey and the predicted time reading the nudge information by grade

*Notes:* This figure plots the the observed overall time spent on the survey and the predicted time of reading the text-image combined information for the 49,549 treated students. Ourliers were suppressed.

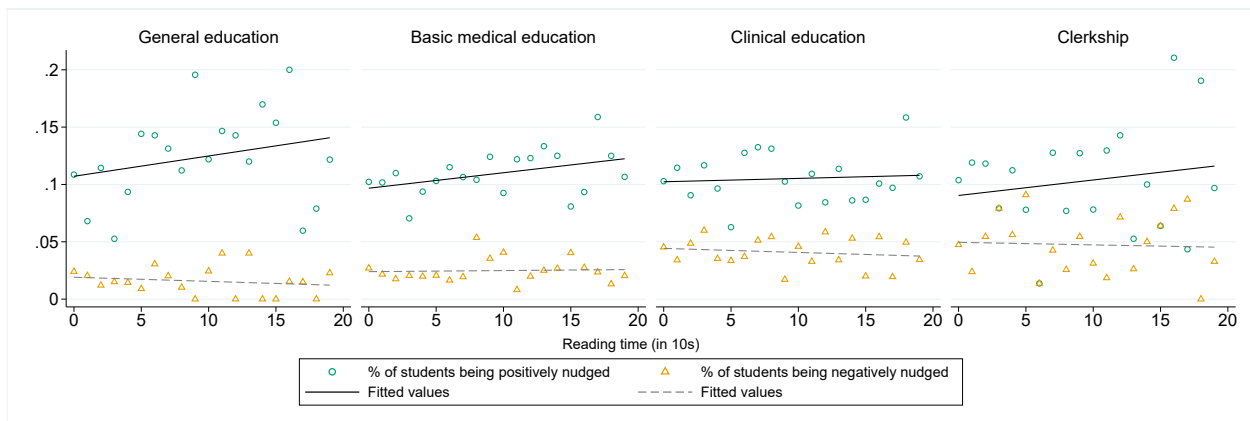


Figure S5: Predicted reading time on the nudge information and changes in the dropout decision, by study phase

*Notes:* Positive nudge effect is defined as changing a student from dropping out to remaining in the medical field. Negative nudge effect is defined as change a student from remaining in the medical field to dropping out. Any change in the decision should reflect a joint effect of COVID-19 and the nudge.

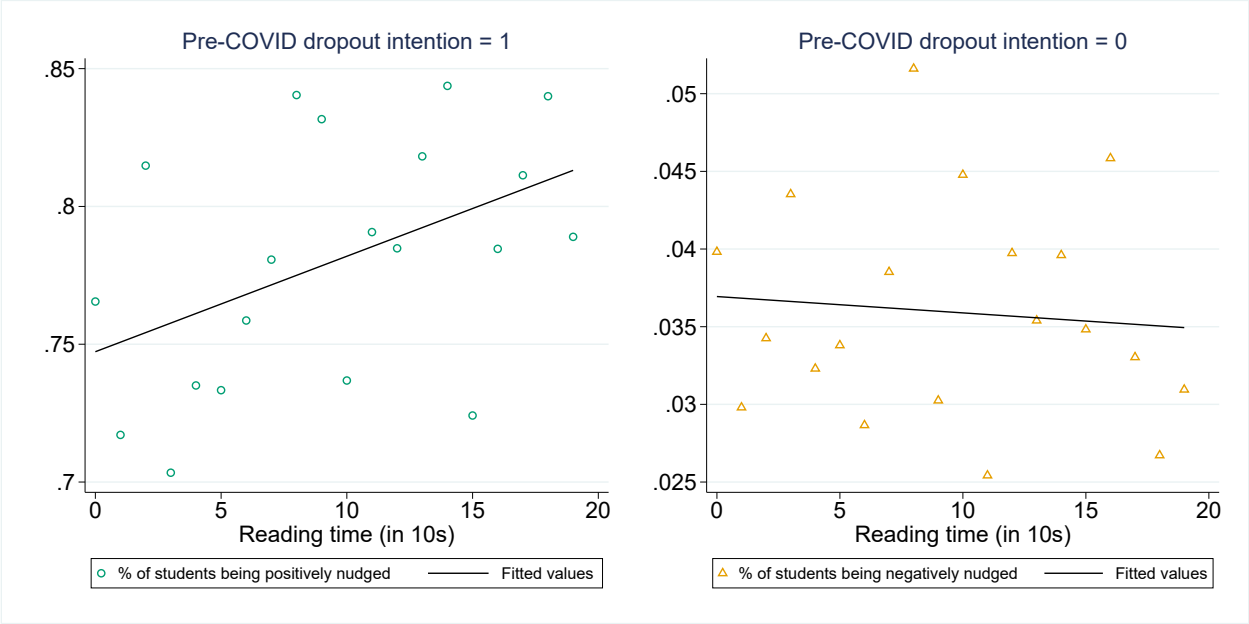


Figure S6: Predicted reading time on the nudge information and changes in the dropout decision, by pre-COVID-19 dropout intention

*Notes:* Positive nudge effect is defined as changing a student from dropping out to remaining in the medical field. Negative nudge effect is defined as change a student from remaining in the medical field to dropping out. Any change in the decision should reflect a joint effect of COVID-19 and the nudge.

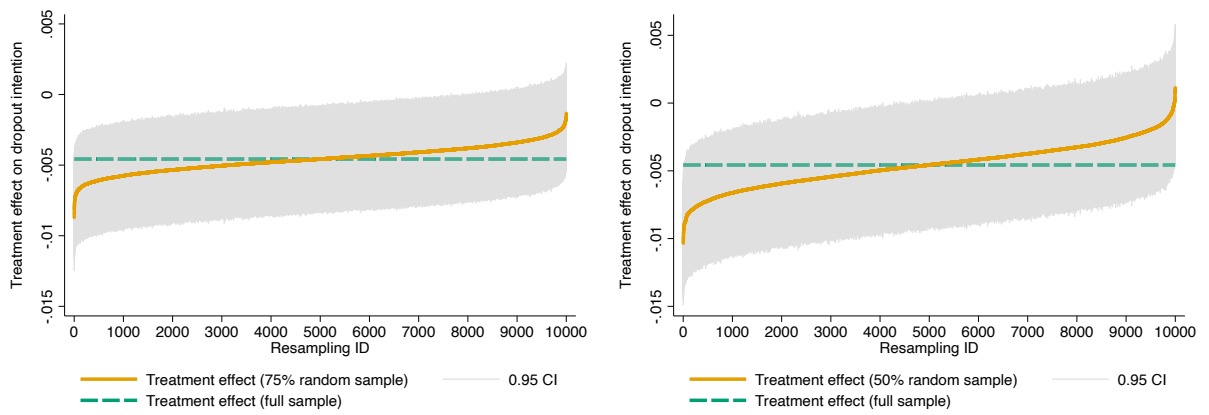


Figure S7: Nudge treatment effect estimates from 10,000 random draws of 75% versus 50% of the sample

*Notes:* This figure plots the estimated nudge intervention effects from 10,000 random draws of 75% versus 50% of the sample. The model specifications are the same as the full sample estimate (indicated by the green line) in column 2 of Table 4.