

## Supplemental figures

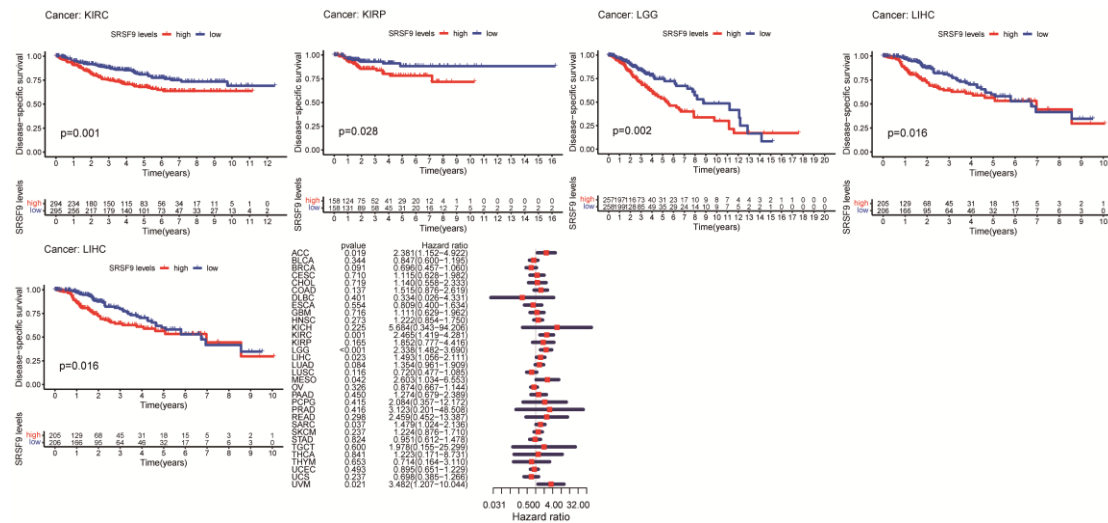


Figure S1: Significant DSS difference between high-expression and low-expression groups of SRSF9 in KIRC, KIRP, LGG, LIHC, UVM and the association between SRSF9 expression levels with DSS in pan-cancer.

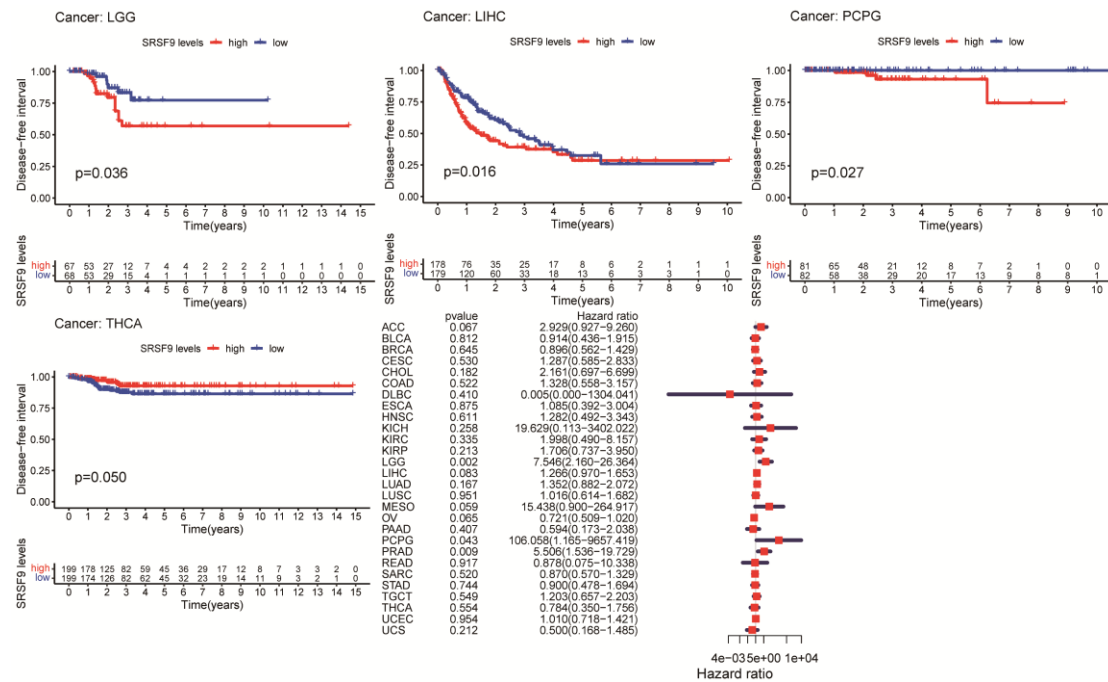


Figure S2: Significant DFI difference between high-expression and low-expression groups of SRSF9 in LGG, LIHC, PCPG, THCA and the association between SRSF9 expression levels with DFI in pan-cancer.

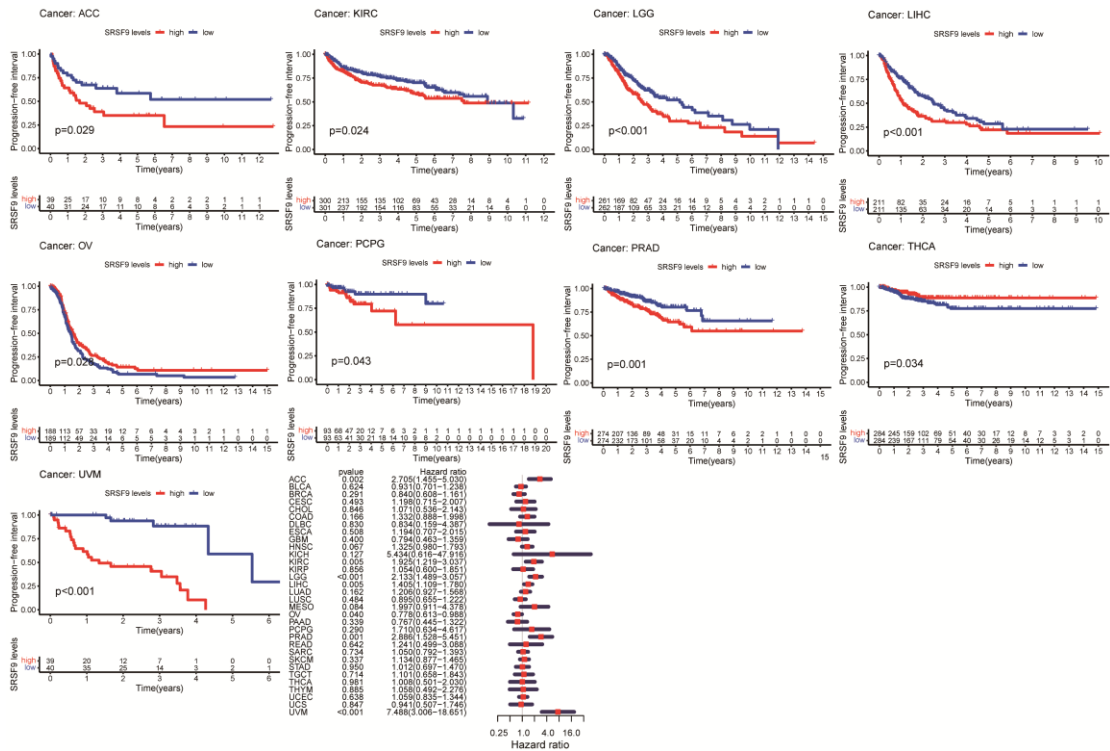


Figure S3: Significant PFI difference between high-expression and low-expression groups of SRSF9 in ACC, KIRC, LGG, LIHC, OV, PCPG, PRAD, THCA, UVM and the association between SRSF9 expression levels with PFI in pan-cancer.

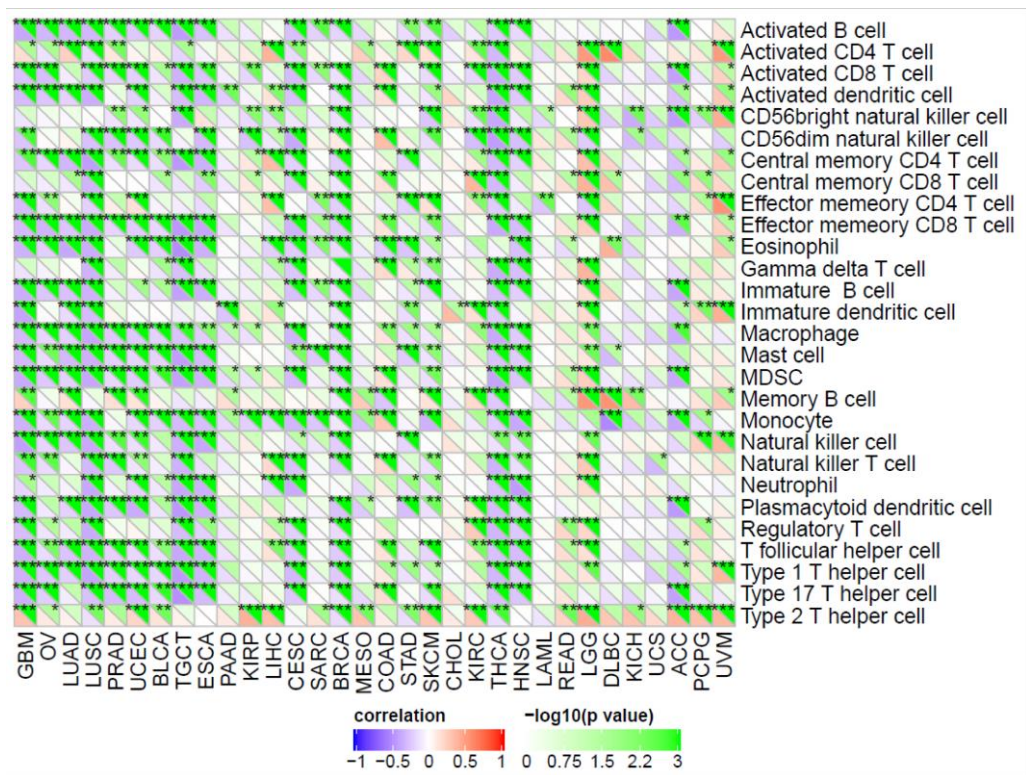


Figure S4: The heatmaps of association between SRSF9 expression and immune related cells in some immune routes.

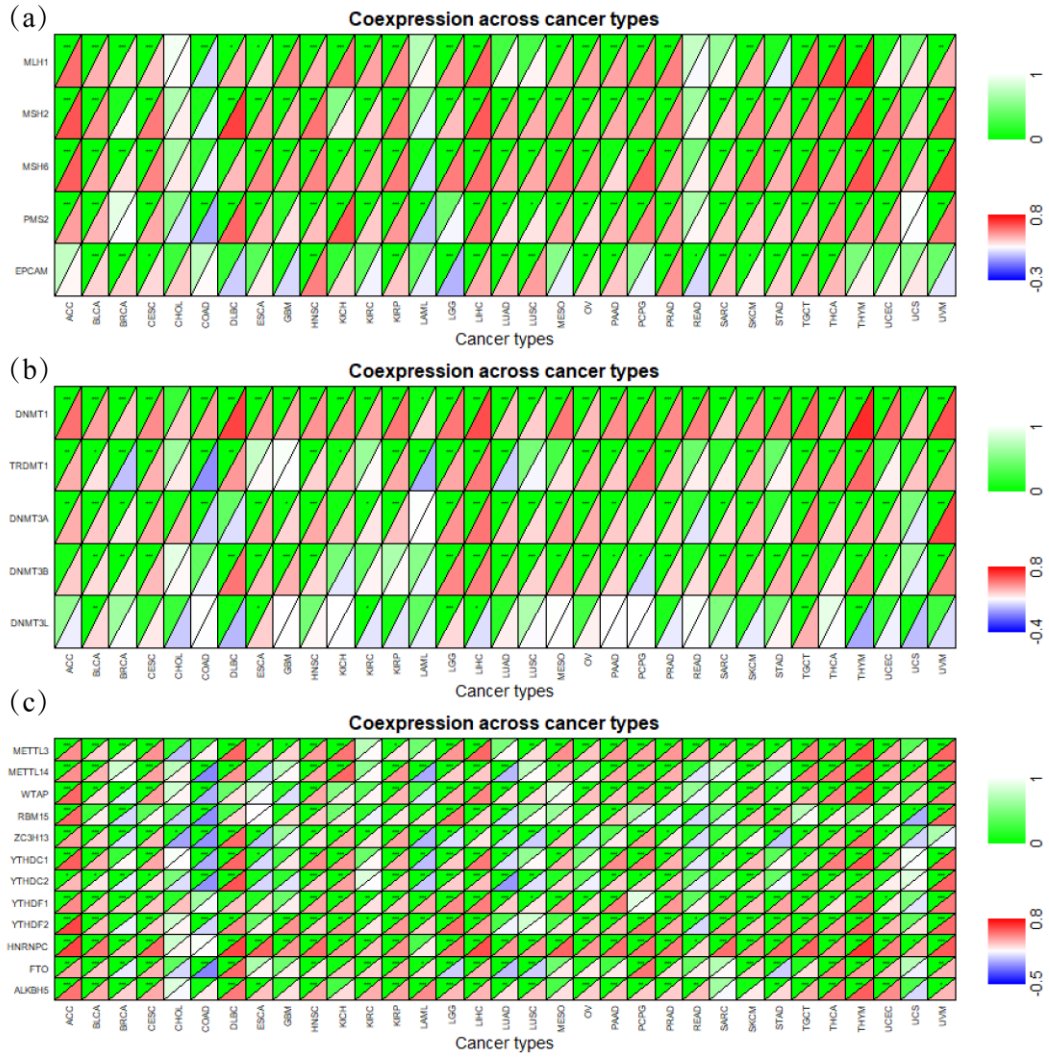


Figure S5: The heatmaps of association between SRSF9 expression and (a) MMR-related genes, (b) DNA methylation genes, (c) m6A genes.

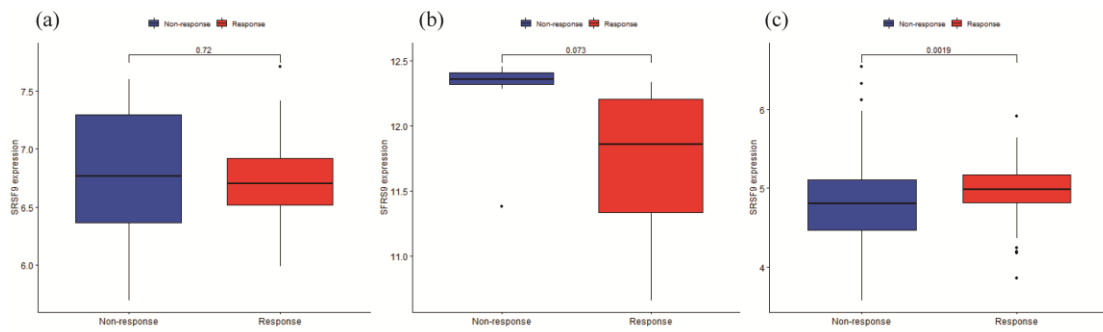


Figure S6: Immunotherapy analysis of (a) melanoma, (b) renal cancer and (c) urothelial epithelial tumor on data from (a) GSE78220, (b) GSE67501 and (c) IMvigort210 database.