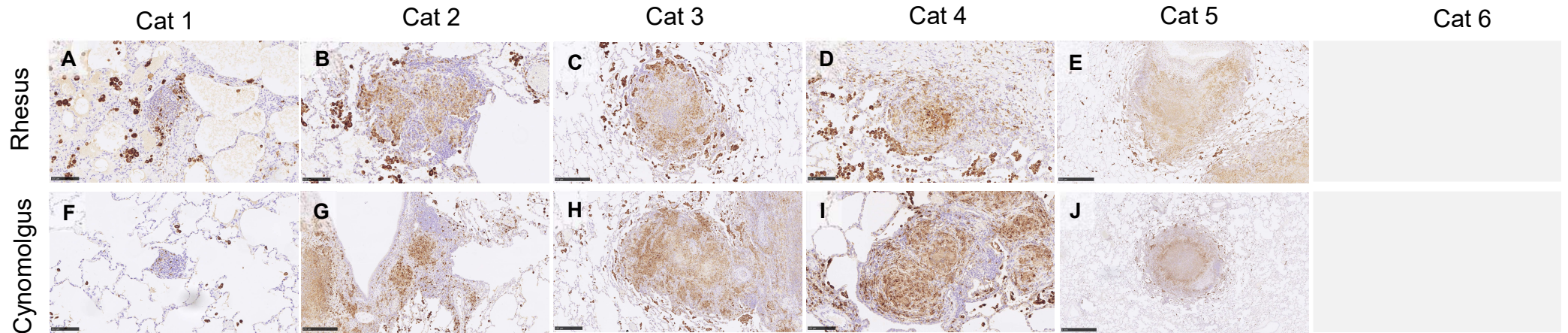
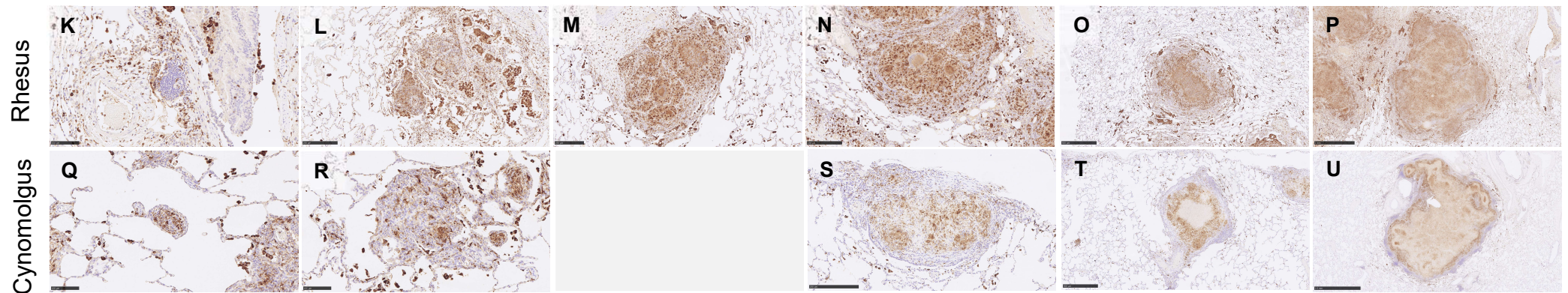


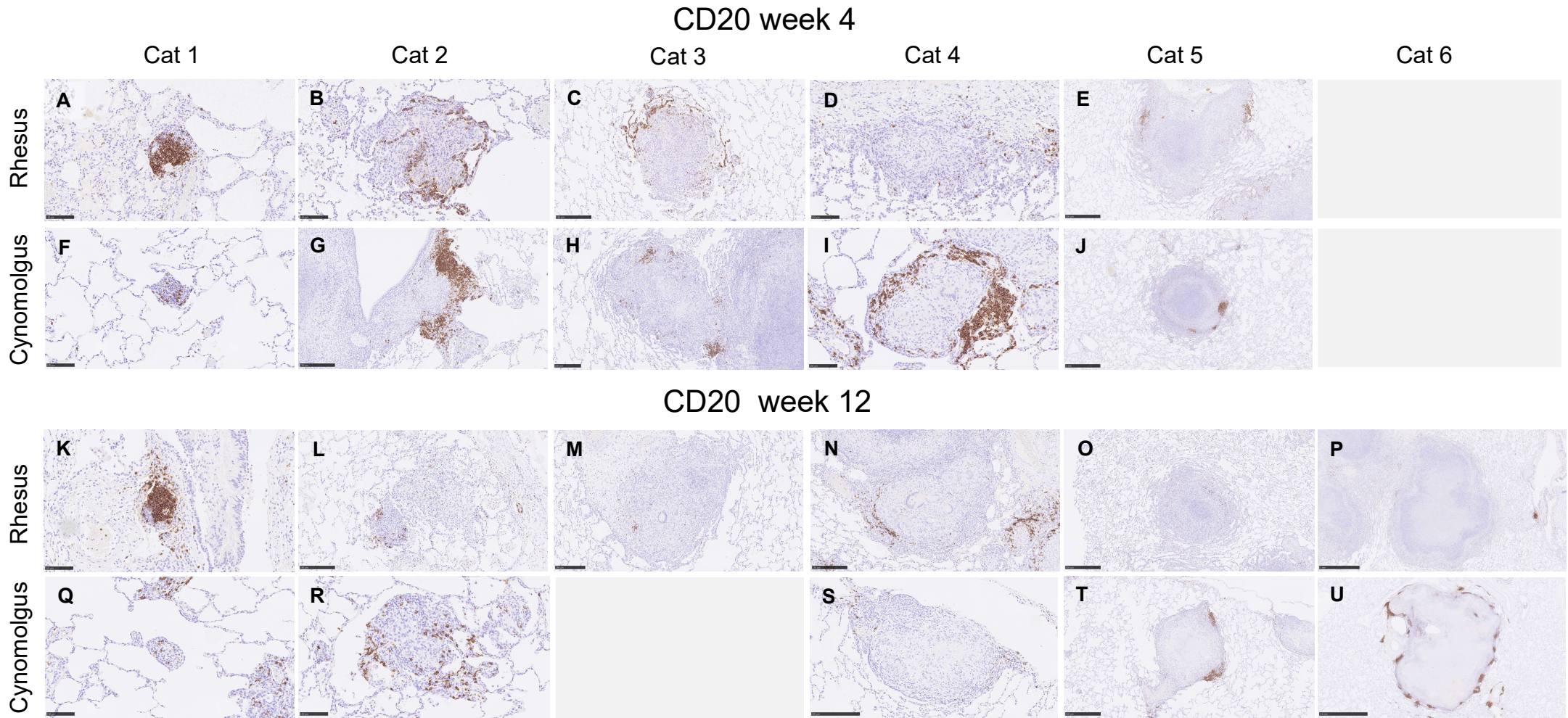
CD68 week 4



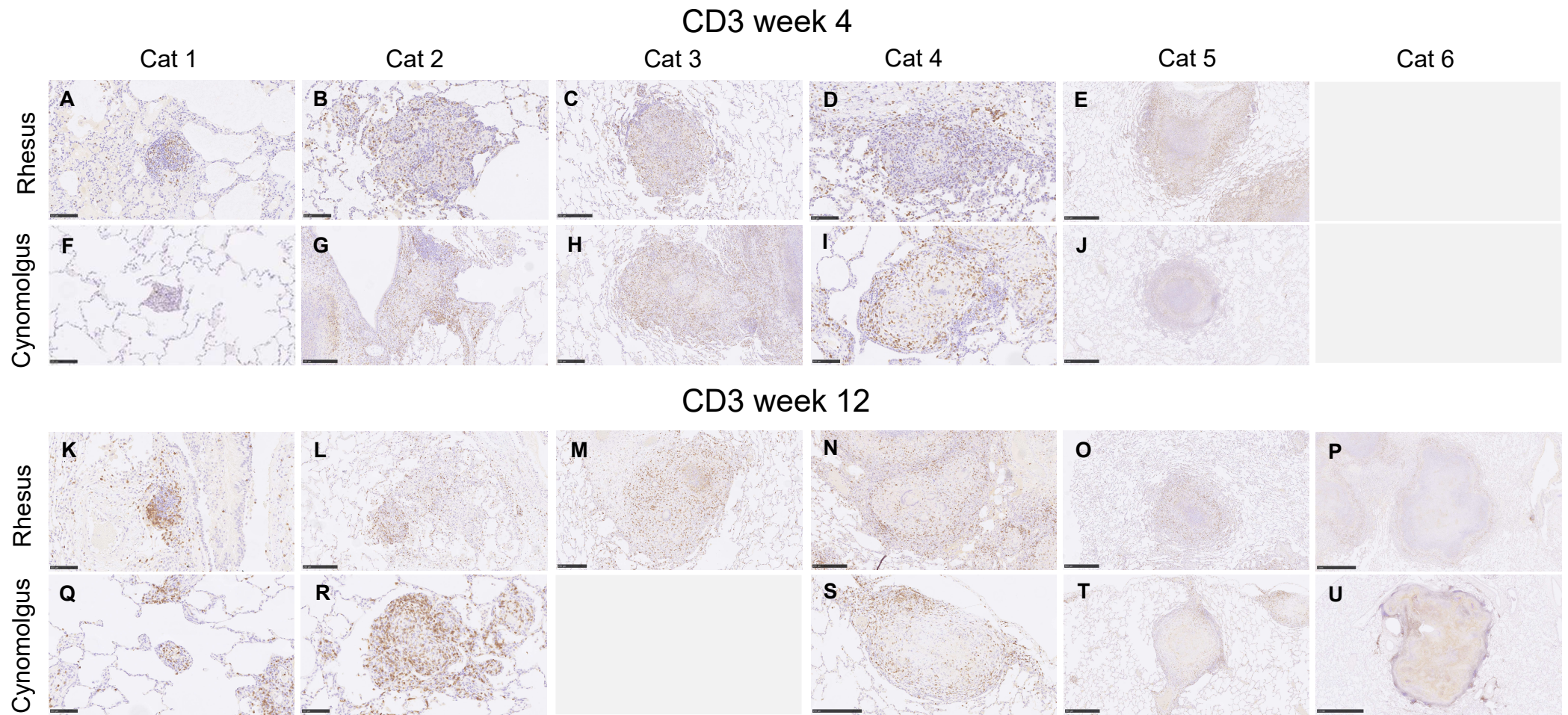
CD68 week 12



Supplementary figure 1. Representative images of CD68+ staining in all categories of granulomas in both rhesus and cynomolgus macaques at 4 and 12 wpc. Light grey boxes = no granulomas of that category were observed. Bars in micrographs – A, B, D, F, I, K, Q & R = 100µm; C, G, H, L, M, N & S = 250µm; E, O & T = 500µm; J & P = 1000µm; U = 2500µm.



Supplementary figure 2. Representative images of CD20+ staining in all categories of granulomas in both rhesus and cynomolgus macaques at 4 and 12 wpc. Light grey boxes = no granulomas of that category were observed. Bars in micrographs – A, B, D, F, I, K, Q & R = 100µm; C, G, H, L, M, N & S = 250µm; E, O & T = 500µm; J & P = 1000µm; U = 2500µm.



Supplementary figure 3. Representative images of CD3+ staining in all categories of granulomas in both rhesus and cynomolgus macaques at 4 and 12 wpc. Light grey boxes = no granulomas of that category were observed. Bars in micrographs – A, B, D, F, I, K, Q & R = 100µm; C, G, H, L, M, N & S = 250µm; E, O & T = 500µm; J & P = 1000µm; U = 2500µm.