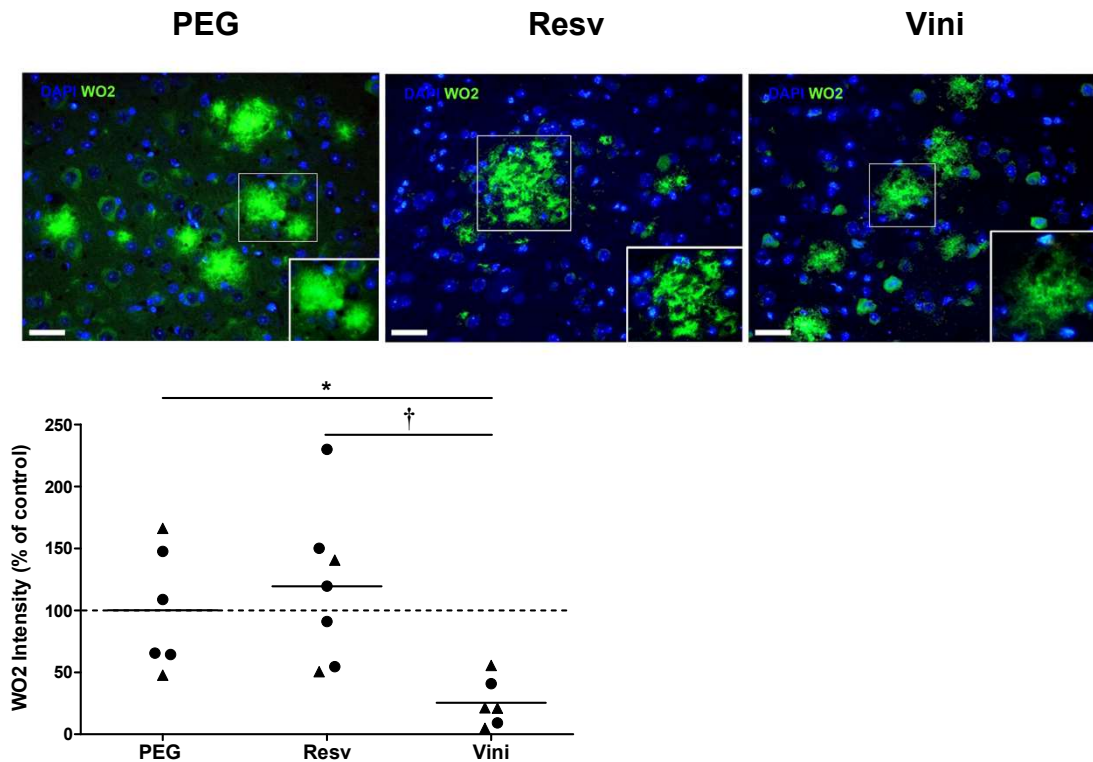


Supplementary Figure 2



Effects of resveratrol and viniferin on the cortical amyloid deposits after 4 months of treatment. The double transgenic APP^{swE}PS1^{dE9} mice were intraperitoneally treated with resveratrol, *trans* ϵ -viniferin or their vehicle (PEG 200 as control) at 20mg/kg from 7 to 11 months of age. The senile plaques were stained with antibody against amyloid peptide (clone WO2, green) and the nuclei with DAPI (blue). On each image, a magnification delineated by a white frame was added. Scale bars: 25 μ m. The quantification of global signal WO2 was represented. In the graph, the dotted line represents 100% and the results were expressed as percentage of control (rounds represent females and triangles represent males). To compare values between PEG- and polyphenol-treated-mice (by *trans* resveratrol or *trans* ϵ -viniferin), a Kruskal-Wallis test followed by Dunn's Multiple Comparison Test were used, (n = 6 or 7 in each group). *p < 0.05 compared to PEG-treated AD mice (control mice) and †p < 0.05 compared to resveratrol-treated mice.