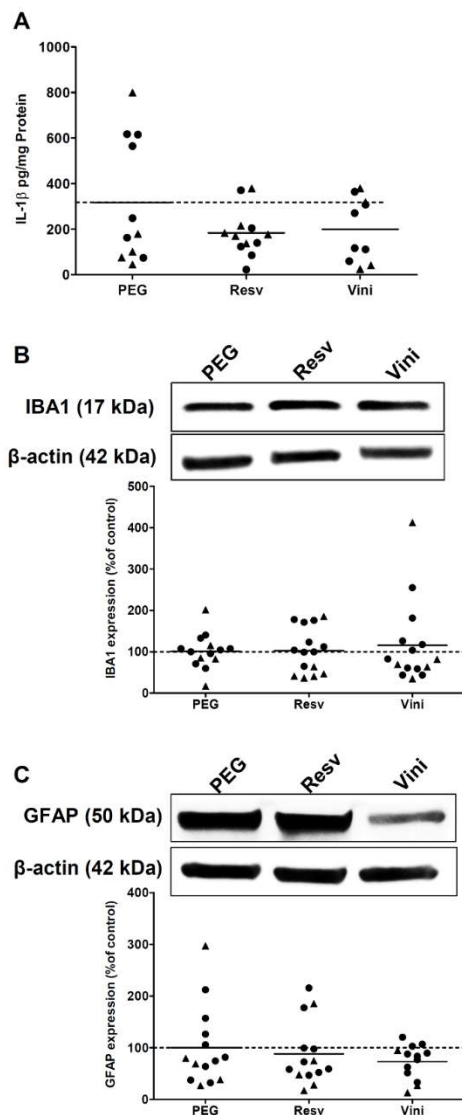


Supplementary Figure 3



Inflammatory parameters in APPswE9 mice after 9 months of treatment with resveratrol or viniferin. Panel A: As indicated in material and methods, IL-1 β was quantified by ELISA in hippocampal homogenates of AD mouse brain. Means were represented and expressed in pg/mg protein (n = 11, 12 and 10 for PEG, Resv and Vini, respectively). **Panel B:** Cropped blots of IBA1 and corresponding β -actin were shown and IBA1 / β -actin ratios were calculated. The means of IBA1 levels were represented for all groups (n = 14, 15 and 15 for PEG, Resv and Vini group, respectively). The results were expressed as percentage of PEG-treated mice as controls (rounds represent females, triangles represent males). The dotted line represents 100% signal. **Panel C:** Cropped blots of GFAP and corresponding β -actin were shown and GFAP / β -actin ratios were calculated. The means of GFAP levels were represented for all groups (n = 13, 14 and 13 for PEG, Resv and Vini, respectively). The results were expressed as percentage of PEG-treated mice as controls (rounds represent females, triangles represent males). The dotted line represents 100% signal. Full-length blots are presented in Supplementary Figure 3.