

Figure S1



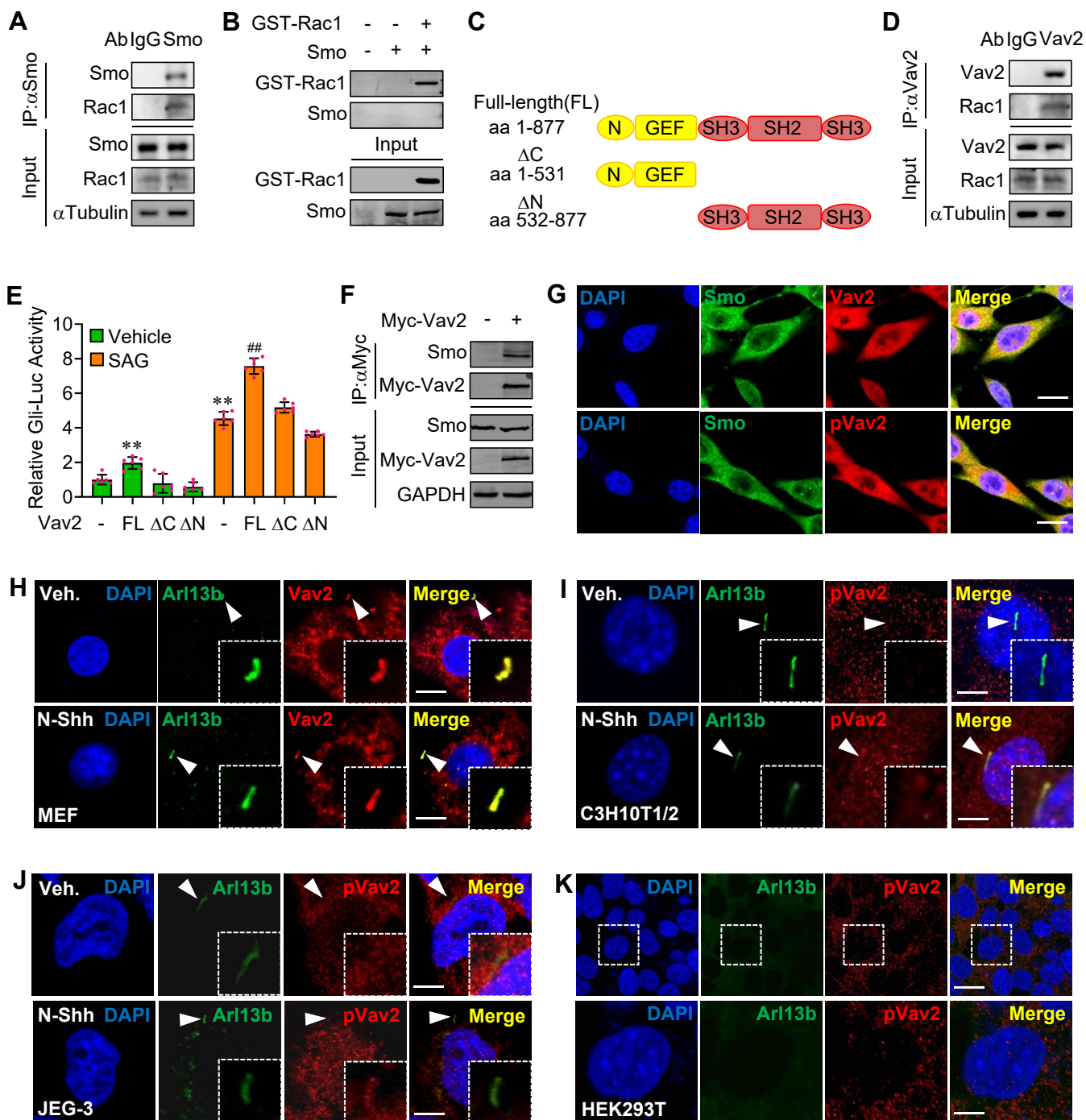
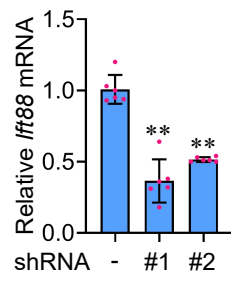
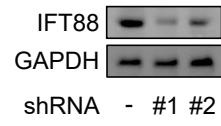


Figure S3

A**B**

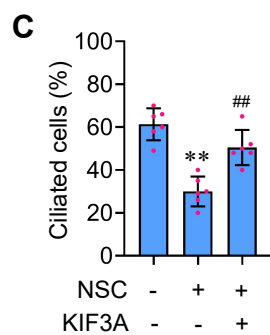
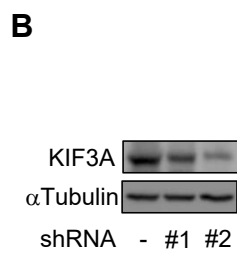
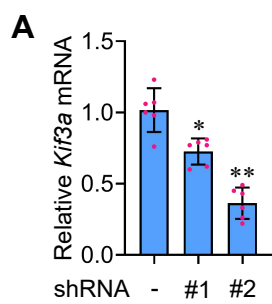


Figure S5

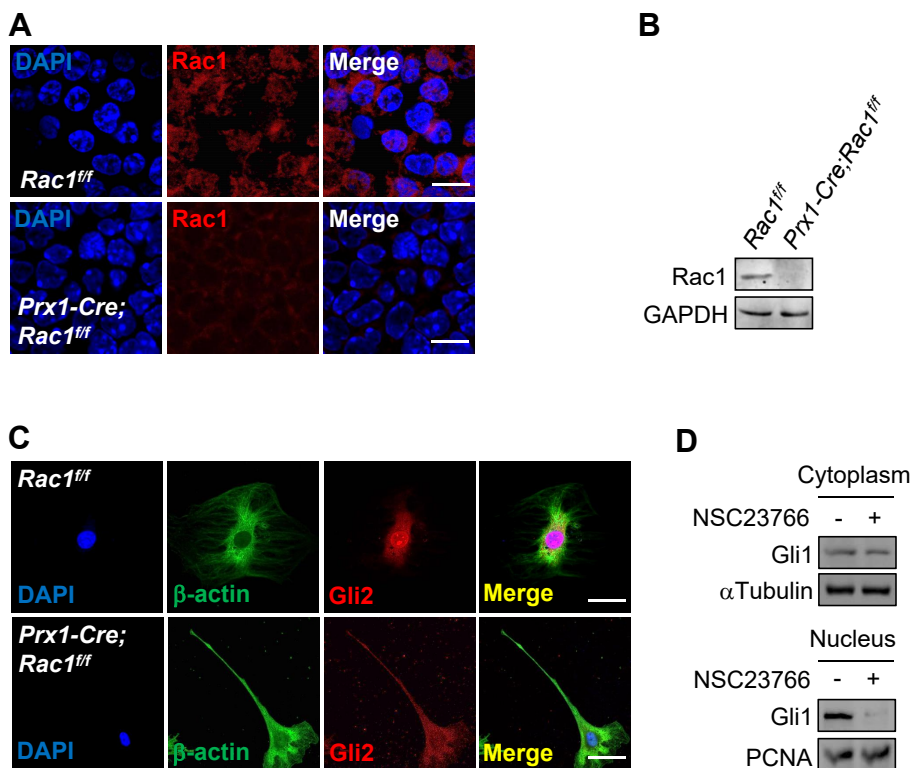


Figure S6

Table S1 The primers for quantitative RT-PCR assays

| | Forward (5'-3') | Reverse (5'-3') |
|--------------|--------------------------|--------------------------|
| <i>Gli1</i> | CCAAGCCAAC TTTATGTCAGGG | AGCCCGCTTCTTTGTTAATTTGA |
| <i>Ptch1</i> | CGGCAGCCGCGATAAG | TTAATGATGCCATCTGCATCCA |
| <i>Vav2</i> | GTTTGACCCTTTTCGACCTCTTT | ACACAGTCGTAGATGTCCTCA |
| <i>Ift88</i> | TGGCCAACGACCTGGAGATTAACA | ATAGCTGCTGGCTTGGGCAAATTC |
| <i>Kif3a</i> | GAACAAGGTATCATCCCAAGGG | GCAGTGCCAACTTCTAGCAGA |
| <i>Gapdh</i> | TGGCCTCCGTGTTCTAC | GAGTTGCTGTTGAAGTCGCA |

Table S2 The sequences for generating shRNA-expressing constructs

| | Sense (5'-3') | Antisense (5'-3') |
|----------------------|---|--|
| Vav2 nt 240 | CCGGTCCGGCTGAAAGTCTGCCACGATAAAC TCGAGTTTATCGTGGCAGACTTTCAGTTTTTG | AATTCAAAAACTGAAAGTCTGCCACGATAAAC TCGAGTTTATCGTGGCAGACTTTCAGCCGGA |
| Vav2 nt 1095 | CCGGTCCGGTTGGCGATGTACATCAATGAAC TCGAGTTCATTGATGTACATCGCCAATTTTTG | AATTCAAAAATTGGCGATGTACATCAATGAAC TCGAGTTCATTGATGTACATCGCCAACCGGA |
| Ift88 nt 813 | CCGGTCCGGGCCAAATAAGTCATTTACCAAC TCGAGTTGGTAAATGACTTATTTGGCTTTTTG | AATTCAAAAAGCCAAATAAGTCATTTACCAAC TCGAGTTGGTAAATGACTTATTTGGCCCGGA |
| Ift88 nt 2381 | CCGGTCCGGGCCCTCAGATAGAAAGACCAA CTCGAGTTGGTCTTTCTATCTGAGGGCTTTTT G | AATTCAAAAAGCCCTCAGATAGAAAGACCAA TCGAGTTGGTCTTTCTATCTGAGGGCCCGGA |
| Kif3a nt 698 | CCGGTCCGGTGGAGTTTATGAATCAGCTAAC TCGAGTTAGCTGATTCATAAACTCCATTTTTG | AATTCAAAAATGGAGTTTATGAATCAGCTAAC TCGAGTTAGCTGATTCATAAACTCCACCGGA |
| Kif3a nt 1051 | CCGGTCCGGAGGGATCAGAATAAATACAAAC TCGAGTTTGTATTTATTCTGATCCCTTTTTG | AATTCAAAAAAGGGATCAGAATAAATACAAAC TCGAGTTTGTATTTATTCTGATCCCTCCCGGA |