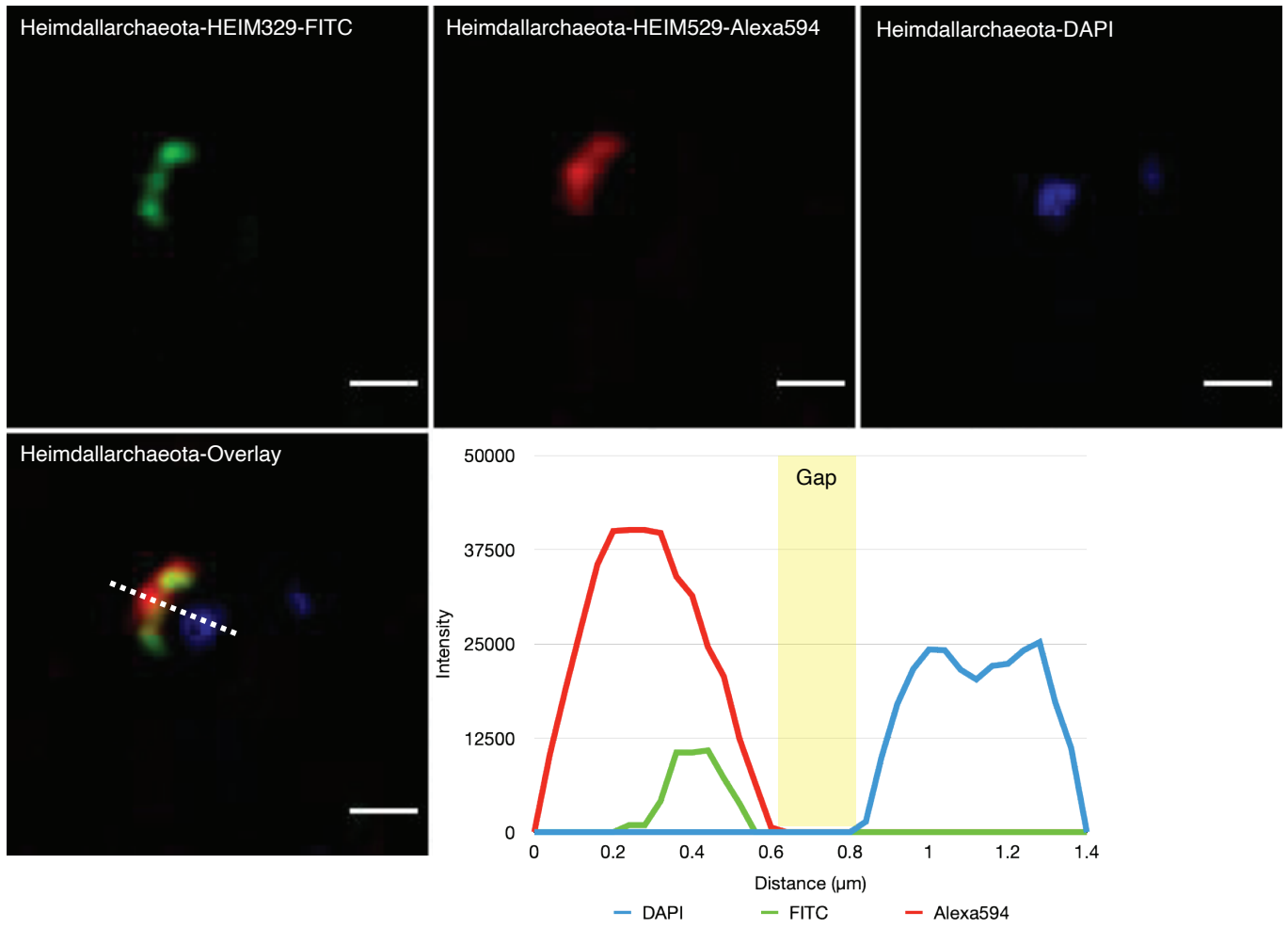
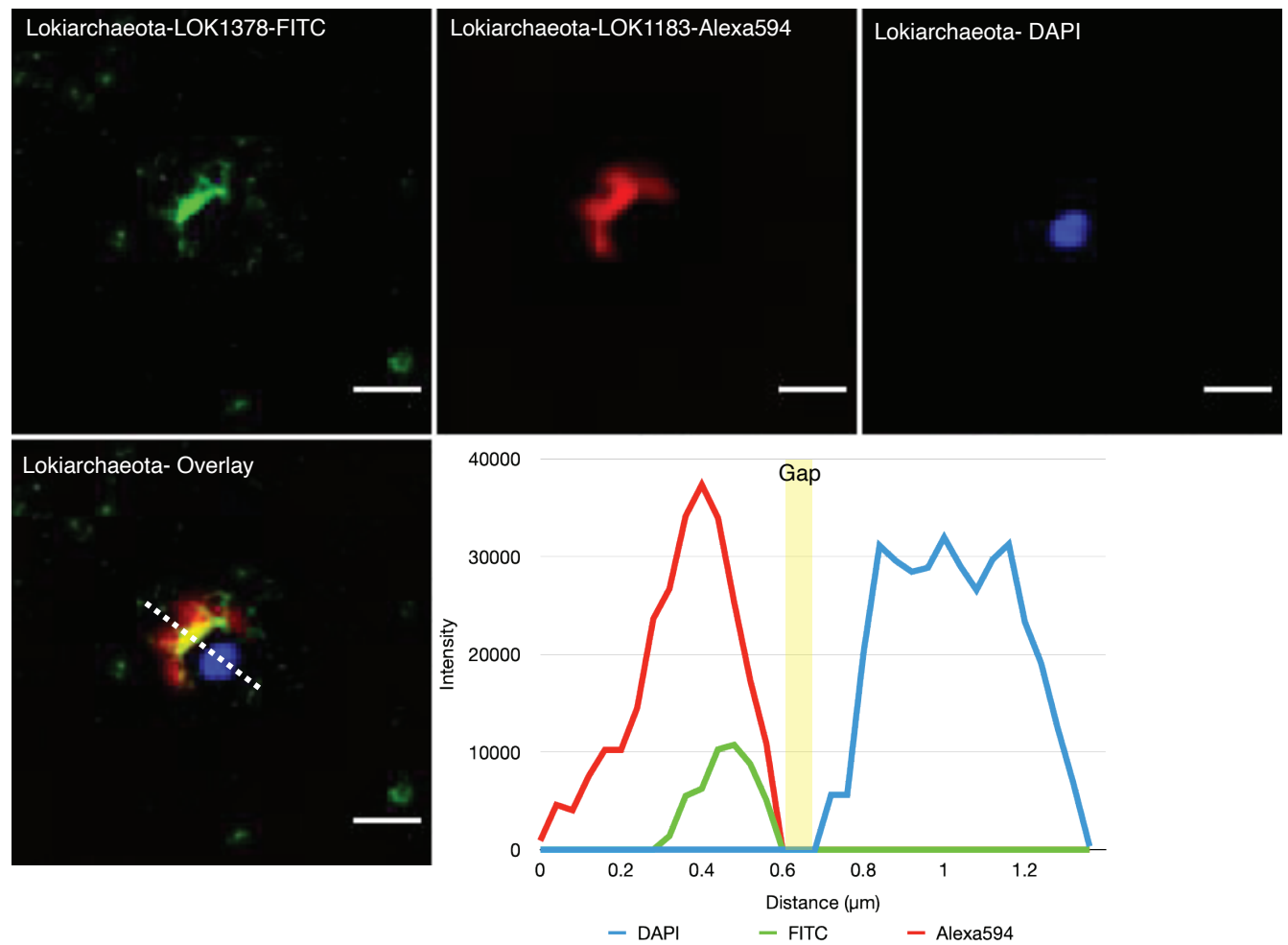


**Supplementary Figure 3.** Super-resolution structured illumination microscopy (SR-SIM) imaging of representative bacterial cells in Aarhus Bay sediments (C-F) and their comparison to Asgard archaeal cells (A-B). Single slices from the center of the focal plane are shown. Probe names and the dyes are indicated for each panel together with the intensity line profile of DAPI and FISH signals. The gap between FISH and DAPI signals in Asgard archaeal cells are highlighted. Dashed lines indicate the position at which the fluorescence intensity line profiles were recorded. Scale bar is 1  $\mu\text{m}$ .

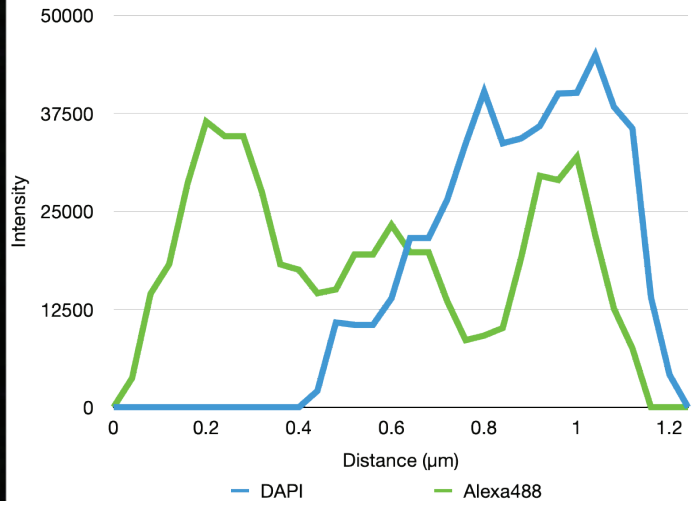
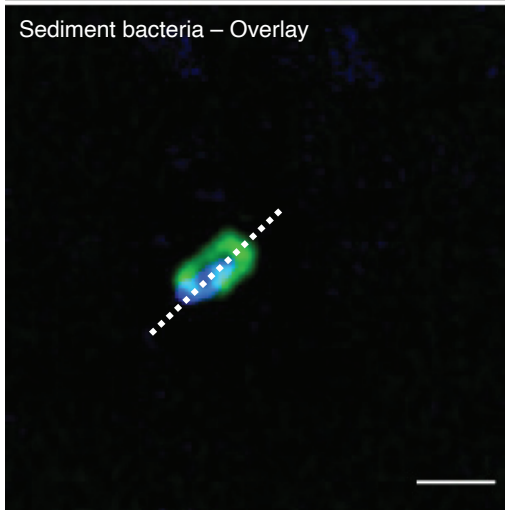
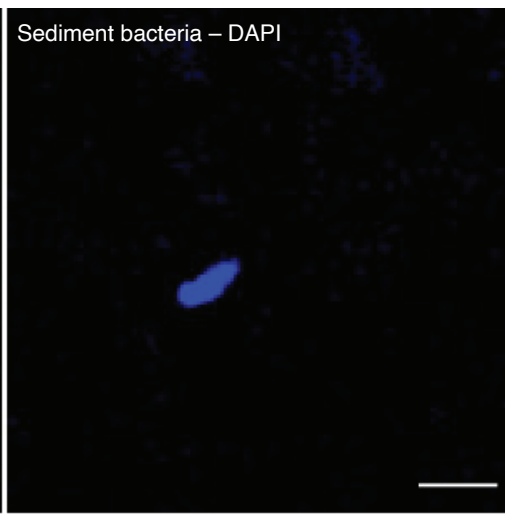
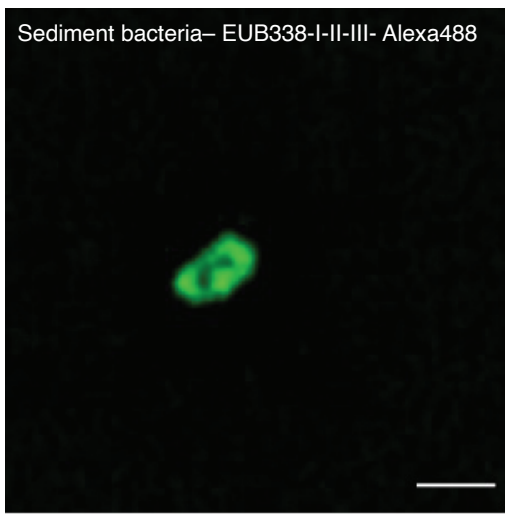
A



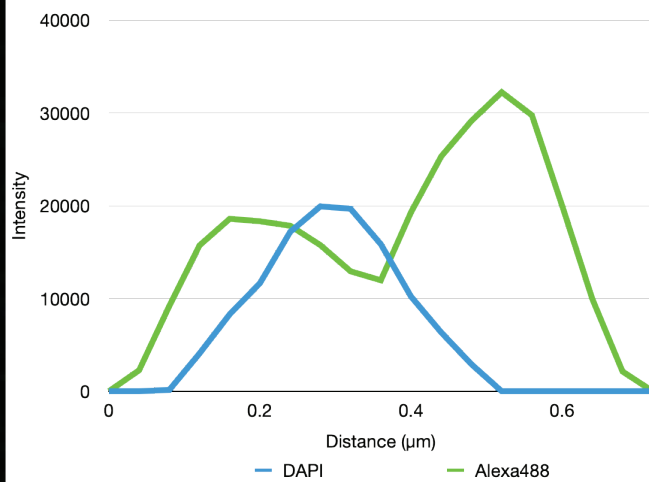
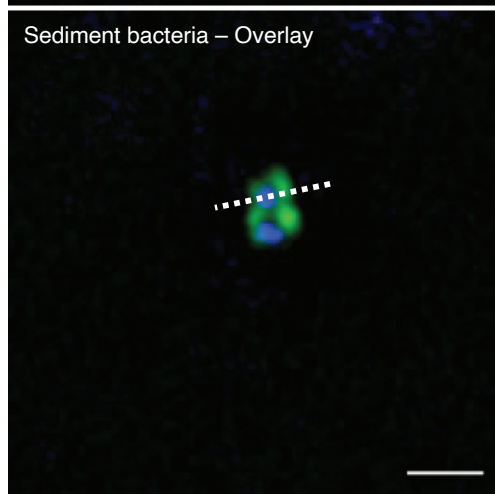
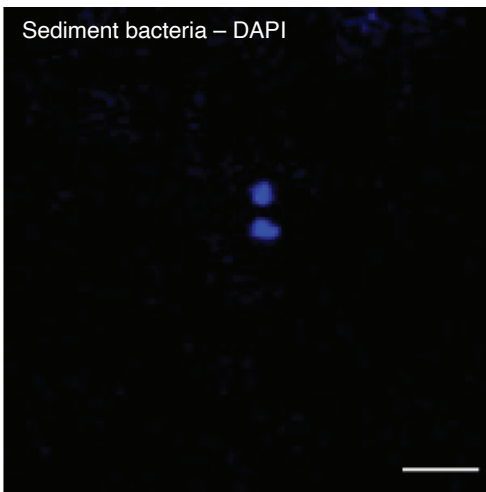
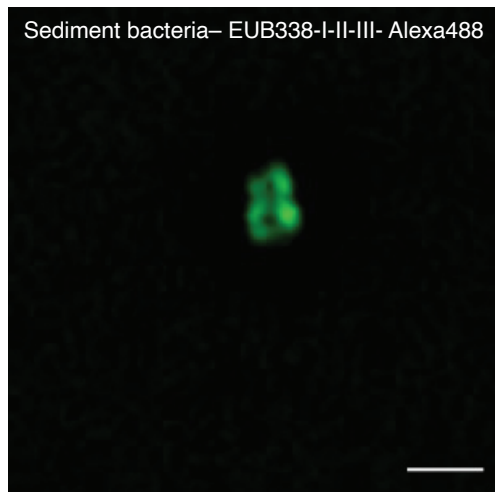
B



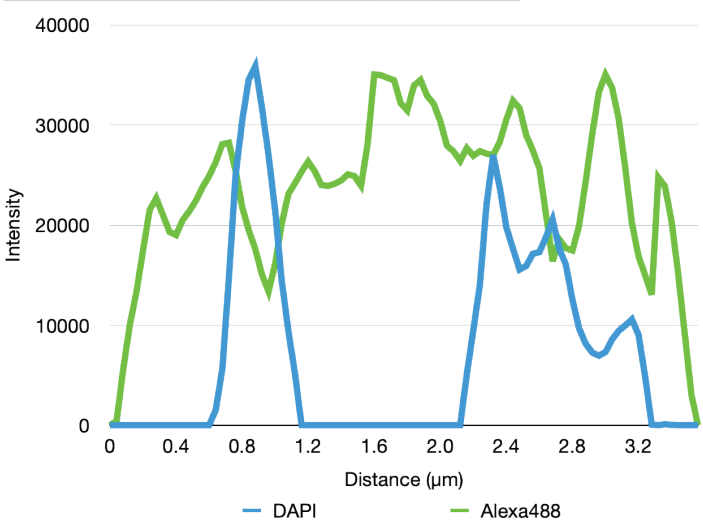
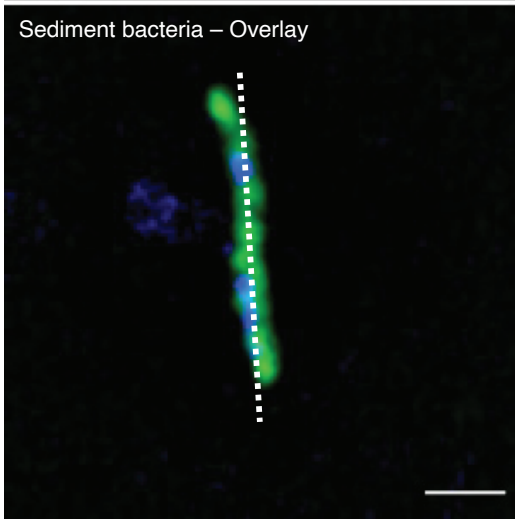
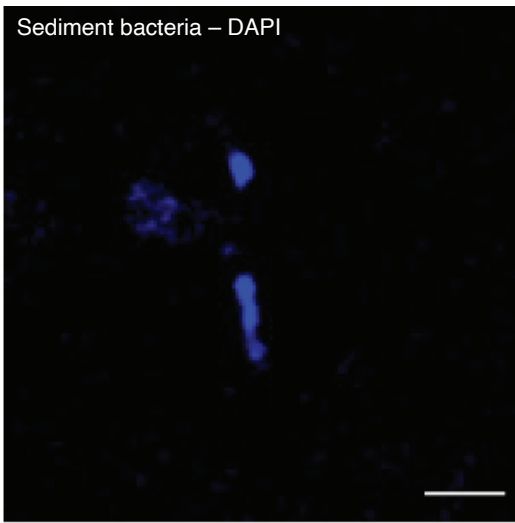
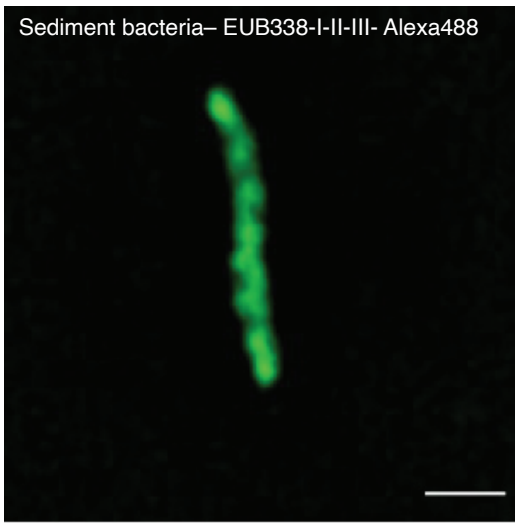
C



D



E



F

