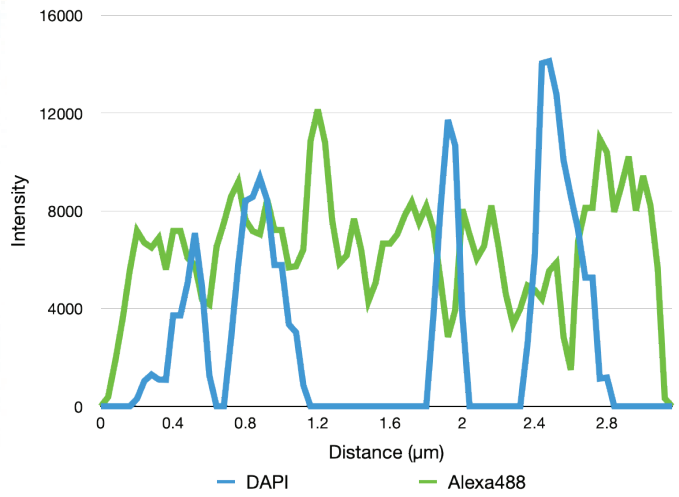
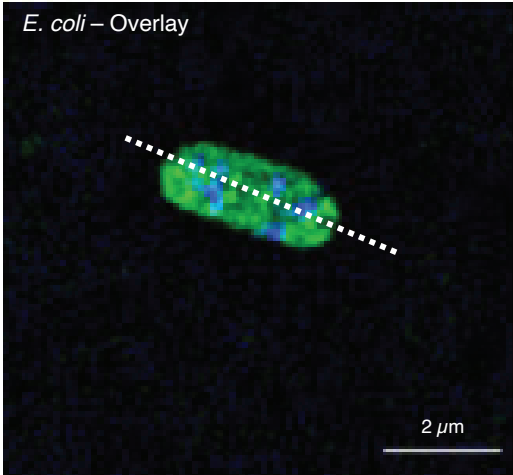
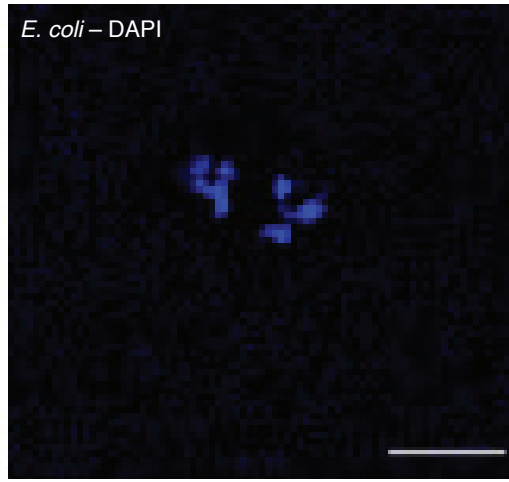
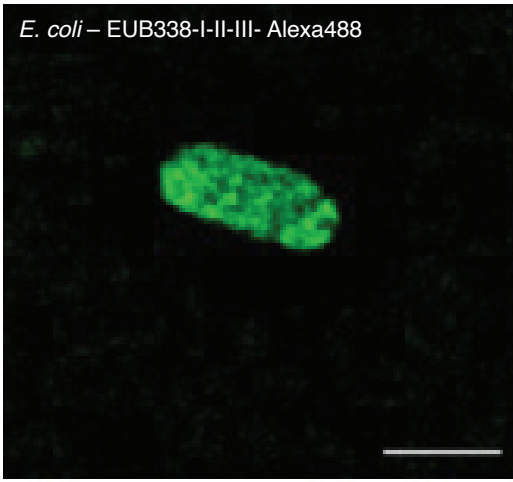
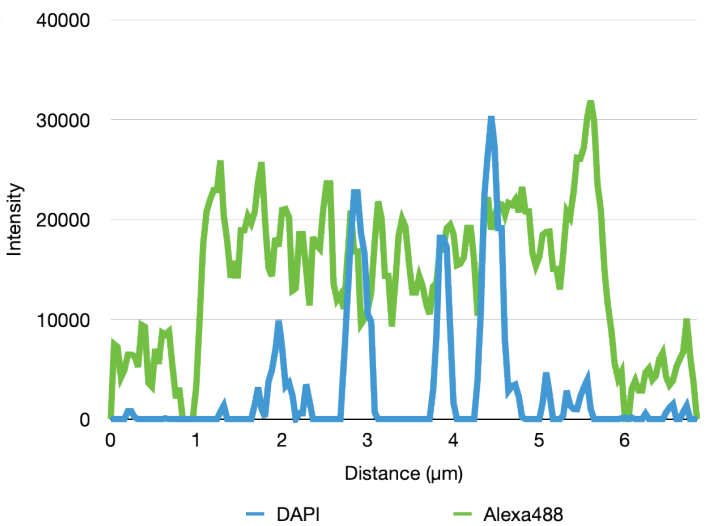
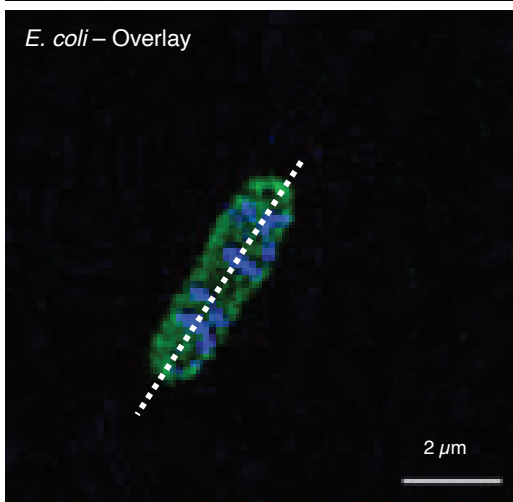
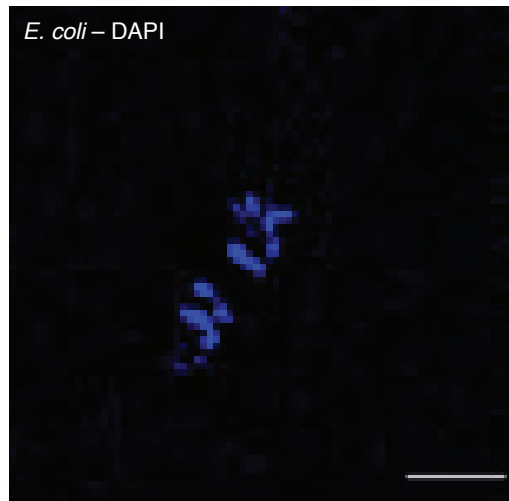


Supplementary Figure 4. Super-resolution structured illumination microscopy (SR-SIM) imaging of condensed DNA formation in *Escherichia coli* (A-B) and *Nitrosopumilus maritimus* cells (C-D). Single slices from the center of the focal plane are shown. Probe names and the dyes are indicated for each panel together with the intensity line profile of DAPI and FISH signals. Dashed lines indicate the position at which the fluorescence intensity profiles were recorded.

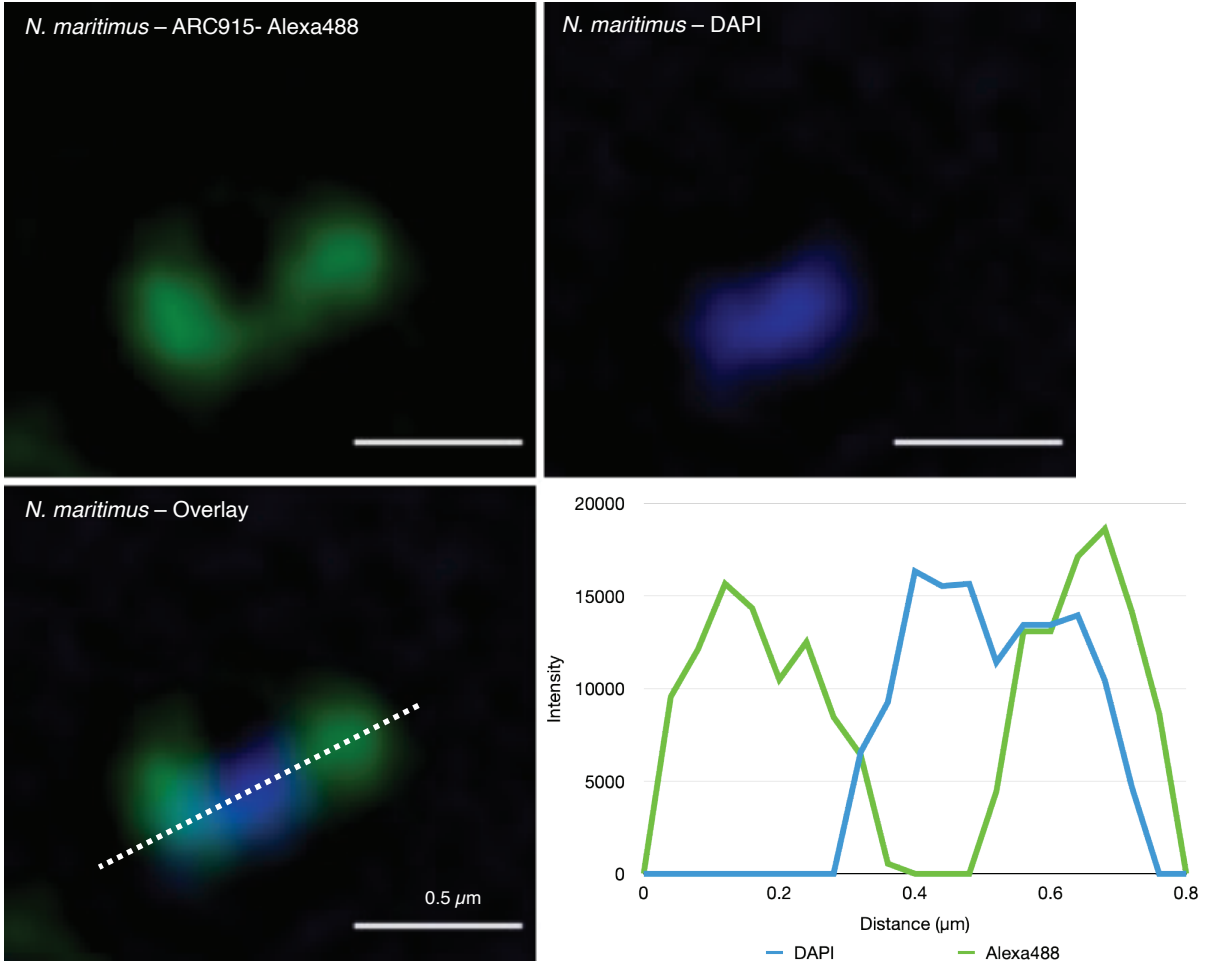
A



B



C



D

