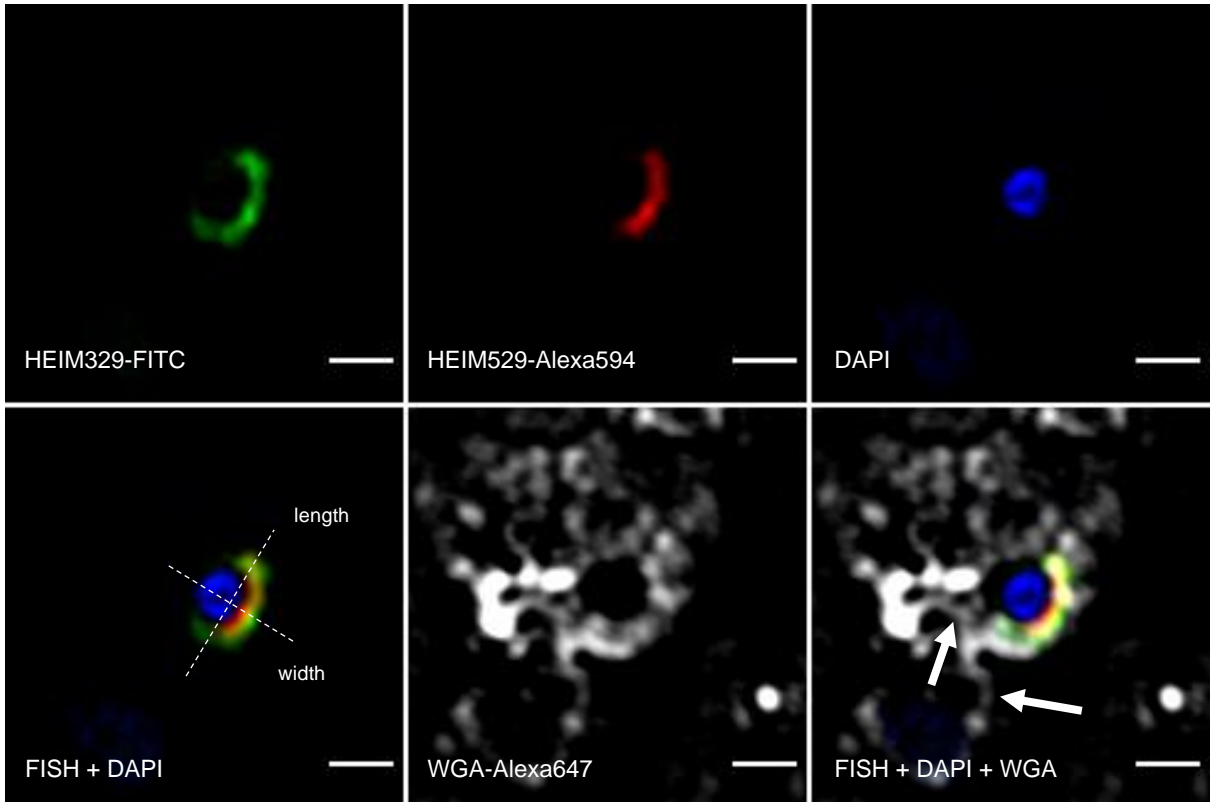
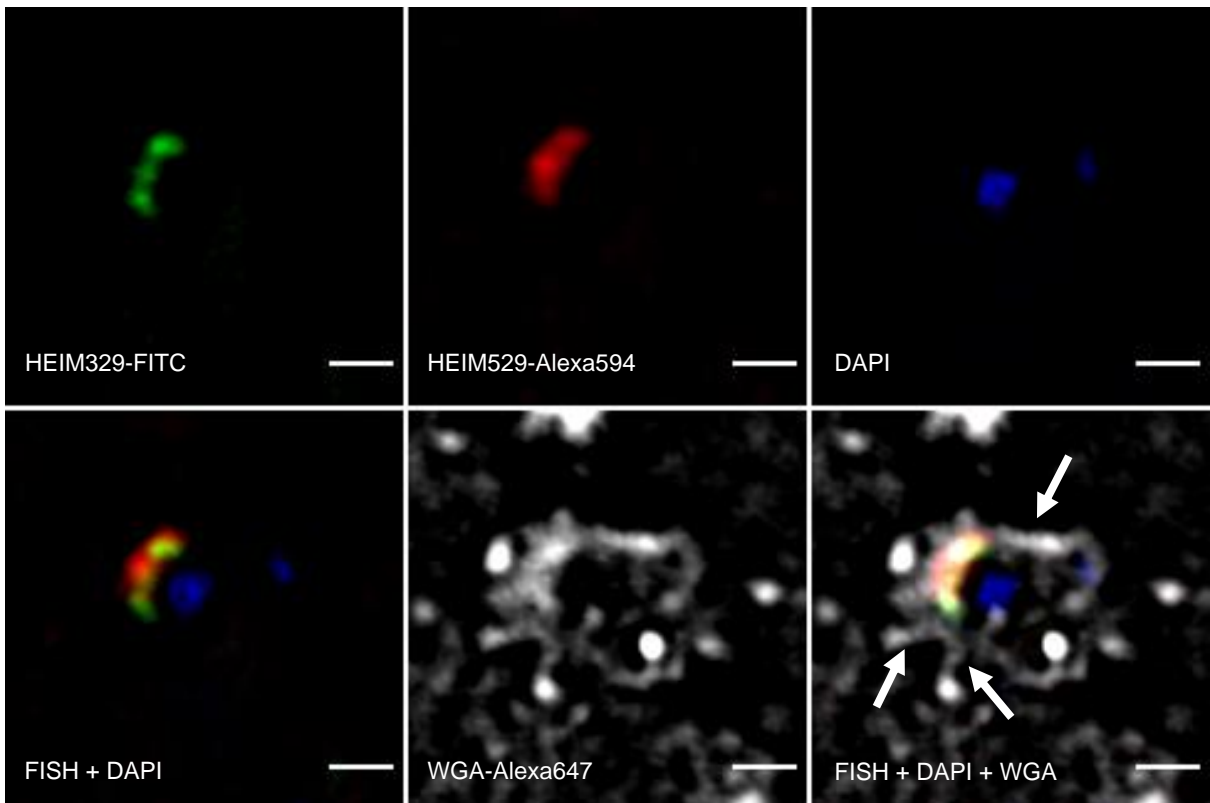


Supplementary Fig. 5 Wheat germ agglutinin (WGA) staining of dual-labeled Loki- and Heimdallarchaeota cells. Probe or staining names and the dyes are indicated for each panel. Extracellular structures connected to the surfaces of Heimdallarchaeota cells are indicated with arrows. The axes that were used to measure cell sizes are demonstrated in dashed lines. Imaging was performed in super-resolution structured illumination microscopy (SR-SIM). Shown are single slice images taken from the center of the focal plane. The scale bar is 1 μm .

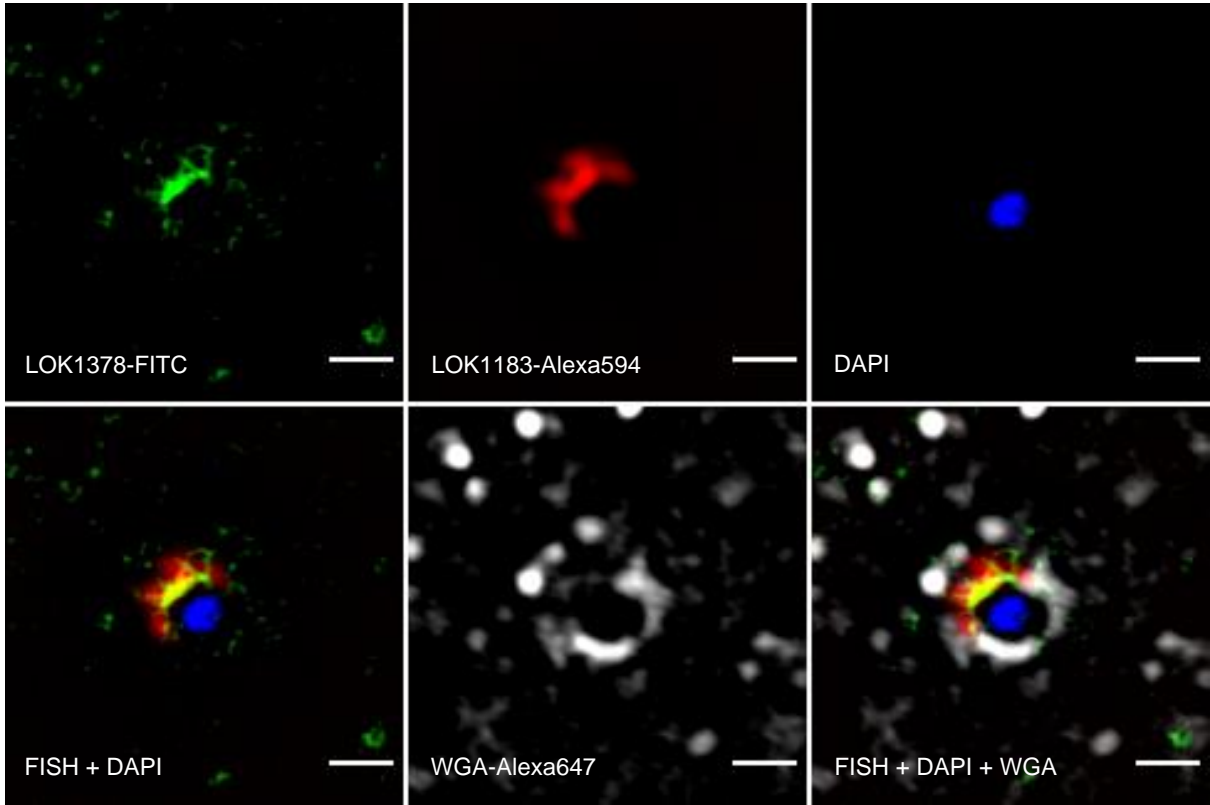
A



B



C



D

