

Preventative treatment with Fluorothiazinon suppressed *Acinetobacter baumannii*-associated septicaemia in mice

Bondareva N.E., Soloveva A.V., Sheremet A.B., Koroleva E.A., Kapotina L.N., Morgunova E.Y., Luyksaar S.I., Zayakin E.S., Zigangirova N.A.

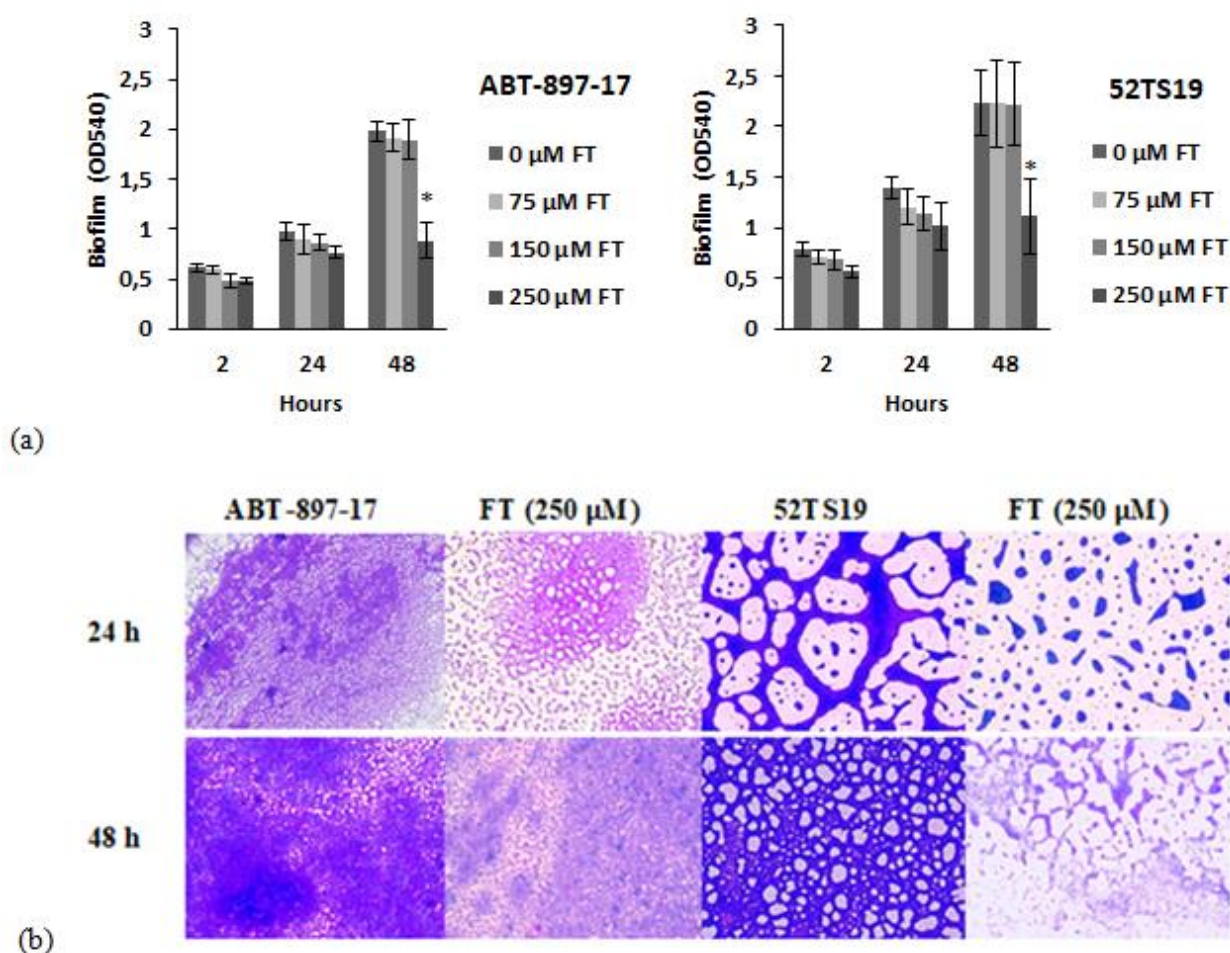


FIG. S1. Effect of FT on the biofilm formation by two *A. baumannii* isolates measured by crystal violet staining. (a) Effect of FT on the biofilm ABT-897-17 and 52TS19 isolates *A. baumannii*. Black - *A. baumannii* untreated control; light grey - *A. baumannii* treated with 75 µM of FT; grey - *A. baumannii* treated with 150 µM of FT; dark grey - *A. baumannii* treated with 250 µM of FT. Error bars represent standard deviation. * $p < 0.05$ versus untreated controls. Each isolate was tested in triplicate per experiment and in at least three experiments. (b) Light microscopic images of *A. baumannii* biofilm obtained by staining with CV, showing inhibition of biofilm under the action of FT at a concentration of 250 µM. Images were observed at 20× magnification.

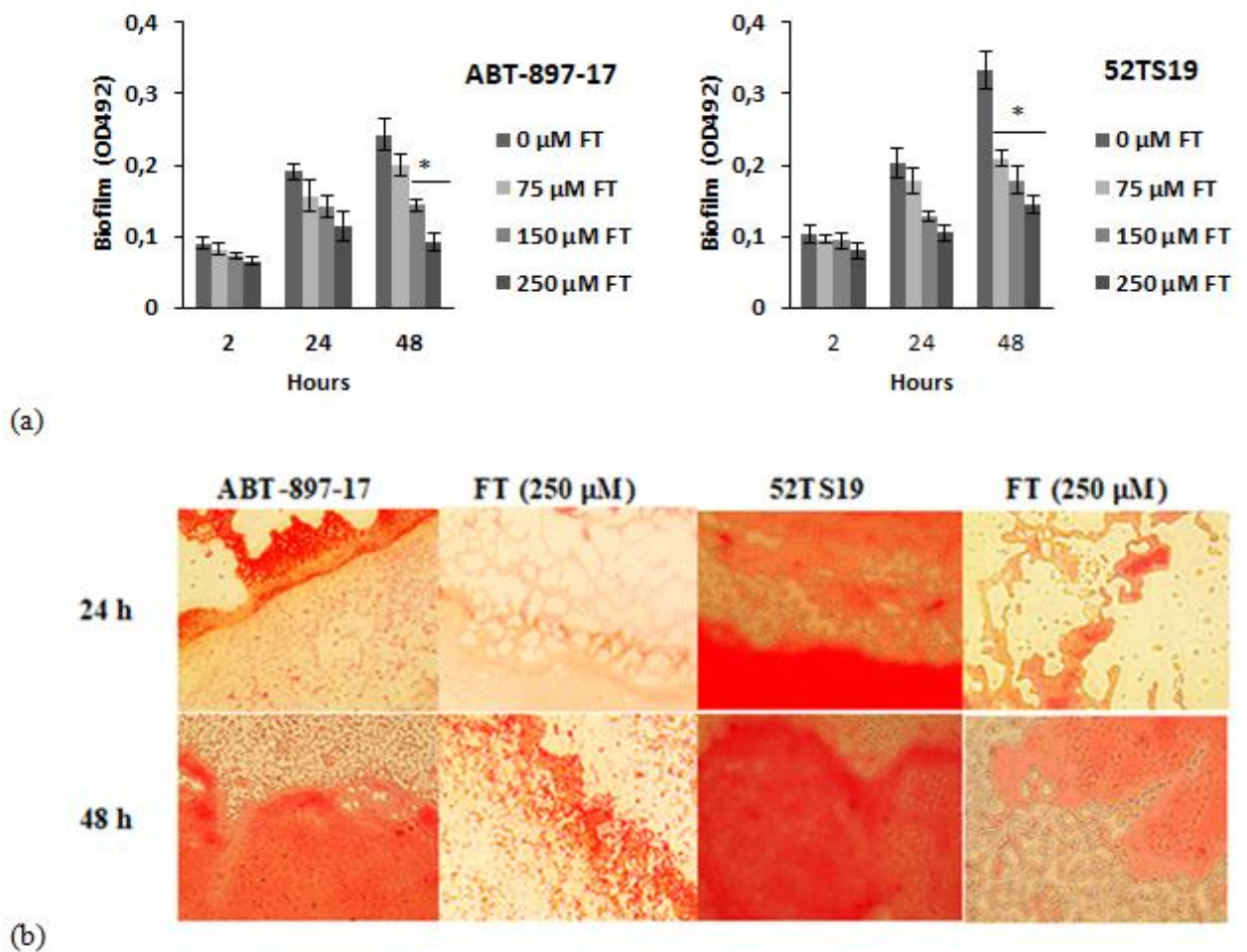


FIG. S2. Effect of FT on the biofilm formation by two *A. baumannii* isolates measured by Congo red staining. (a) Dose-dependent effect of FT on the biofilm ABT-897-17 and 52TS19 isolates *A. baumannii*. Black - *A. baumannii* untreated control; light grey - *A. baumannii* treated with 75 μM of FT; grey - *A. baumannii* treated with 150 μM of FT; dark grey - *A. baumannii* treated with 250 μM of FT. Error bars represent standard deviation. * $p < 0.05$ versus untreated controls. Each isolate was tested in triplicate per experiment and in at least three experiments. (b) Light microscopic images of *A. baumannii* biofilm obtained by staining with CR, showing significant decrease in the density of the matrix layer in biofilms after exposure to 250 μM of FT. Images were observed at 20× magnification.

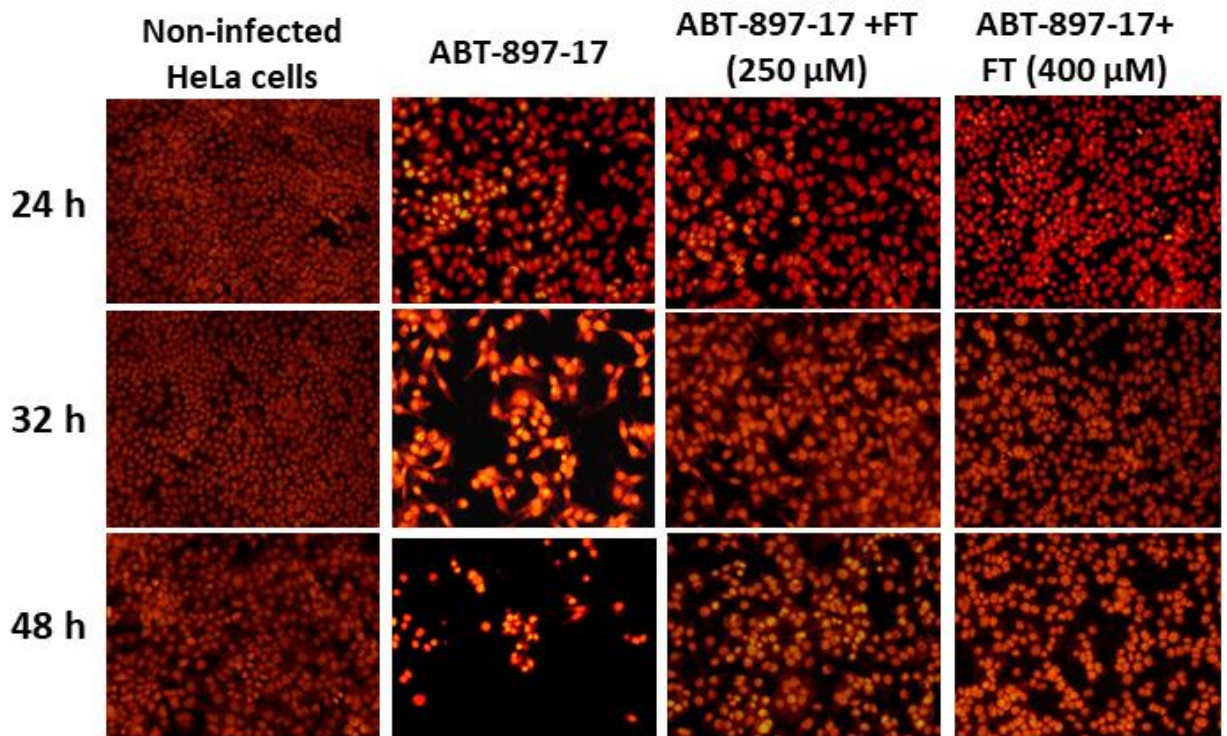


FIG. S3. FT inhibits *A.baumannii* – induced cytotoxicity of HeLa cells. HeLa cells were seeded into 24-well plates and infected with *A. baumannii* ABT-897-17 at MOI 1. FT was added to the experimental samples at a final concentration of 250 and 400 μ M. The cells were incubated for 24 and 48 h, were stained with bromide ethidium and analysed by fluorescence microscopy. Images were observed at 20 \times magnification.