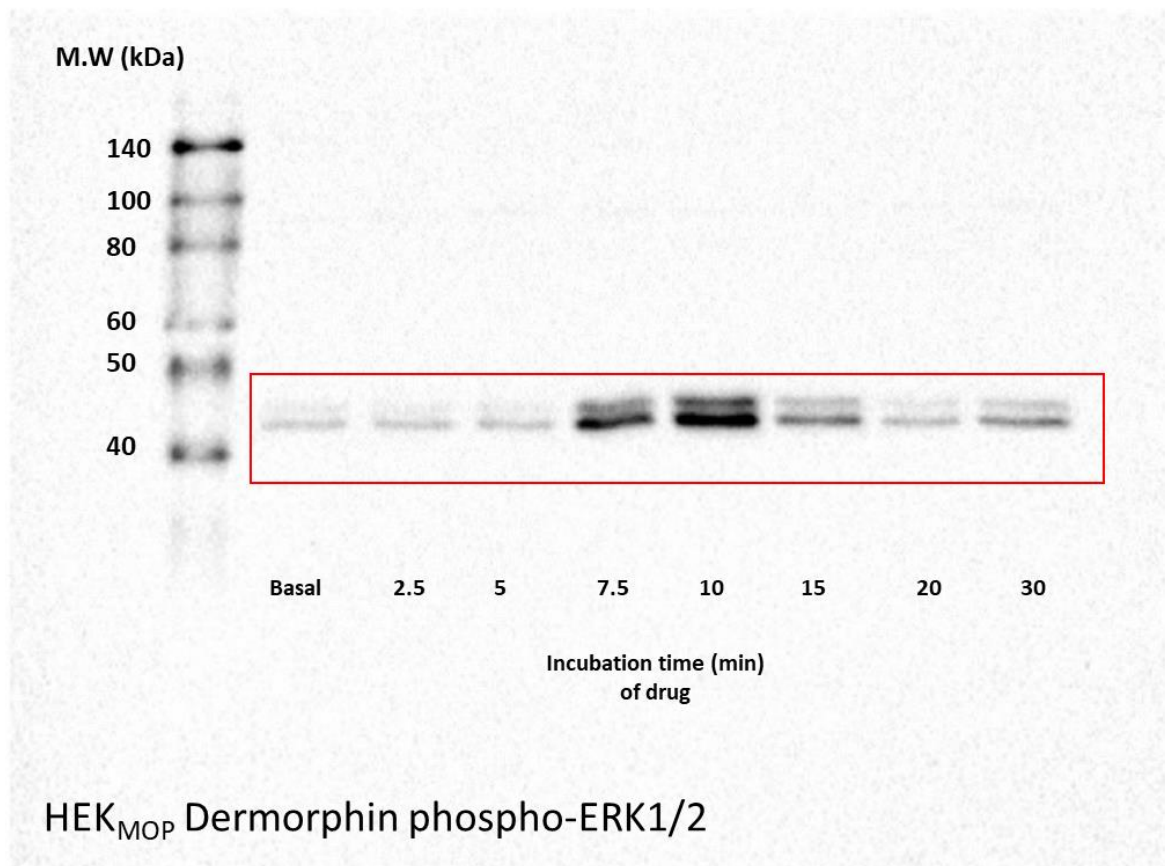
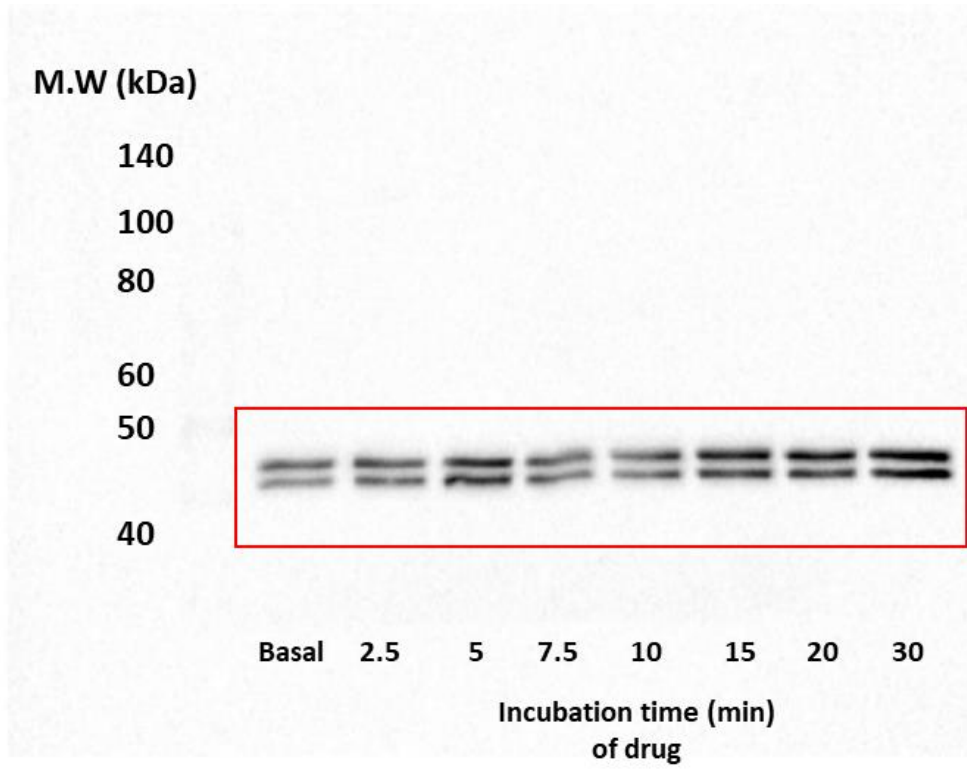


Western blot Raw images

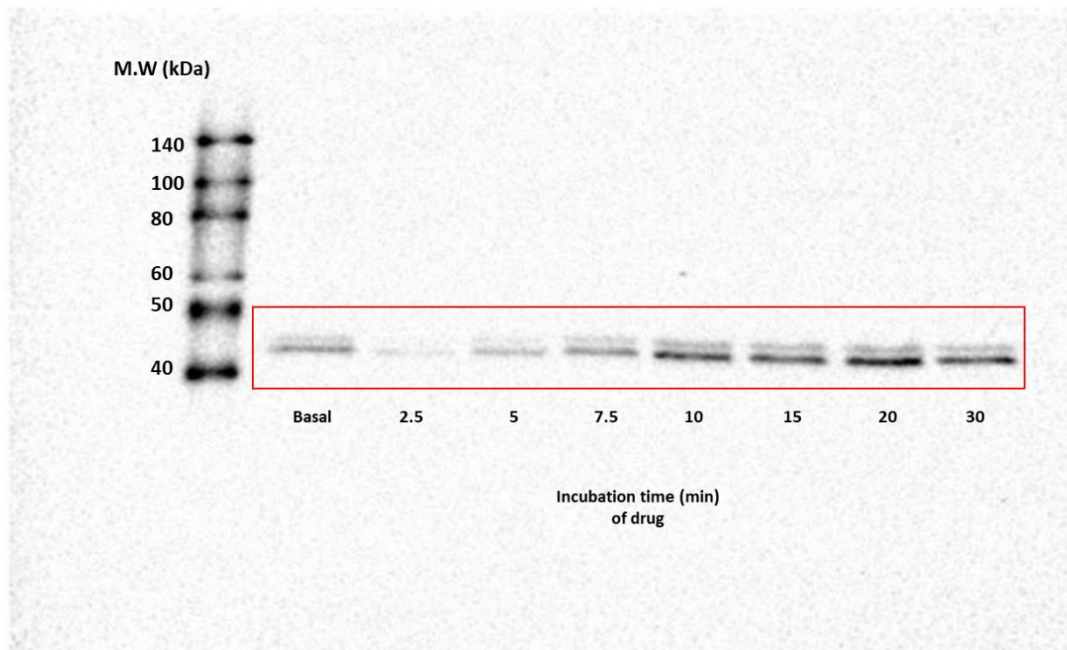
All images were obtained by using BioRad Imagelab software as detailed in main text methods section. Images are presented in the order they appear in Figure 11 of the main text. Molecular weights of the biotinylated ladder (Cell signalling. Product#7727) are included in text. The red box indicates the area chosen to be used in Figure 11.

HEK_{MOP} Western blot results

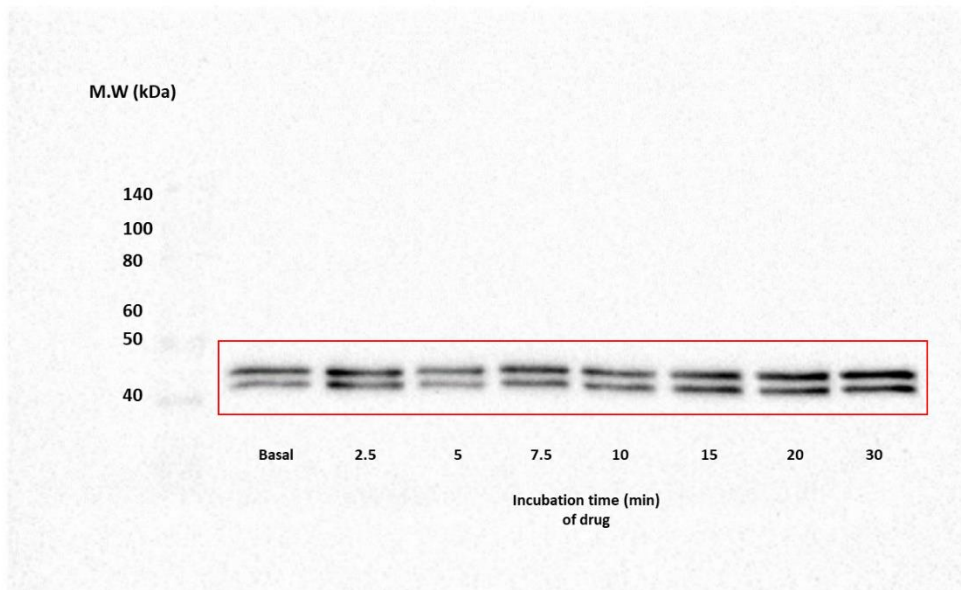




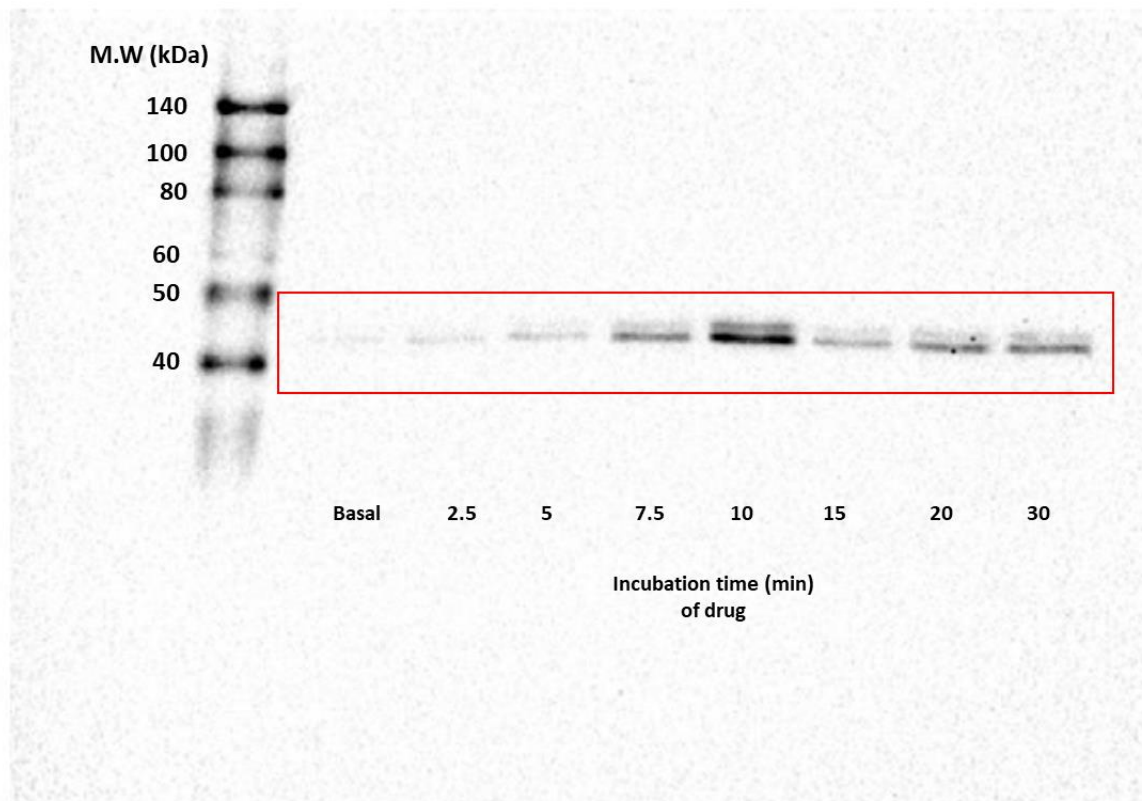
HEK_{MOP} Dermorphin Total ERK1/2



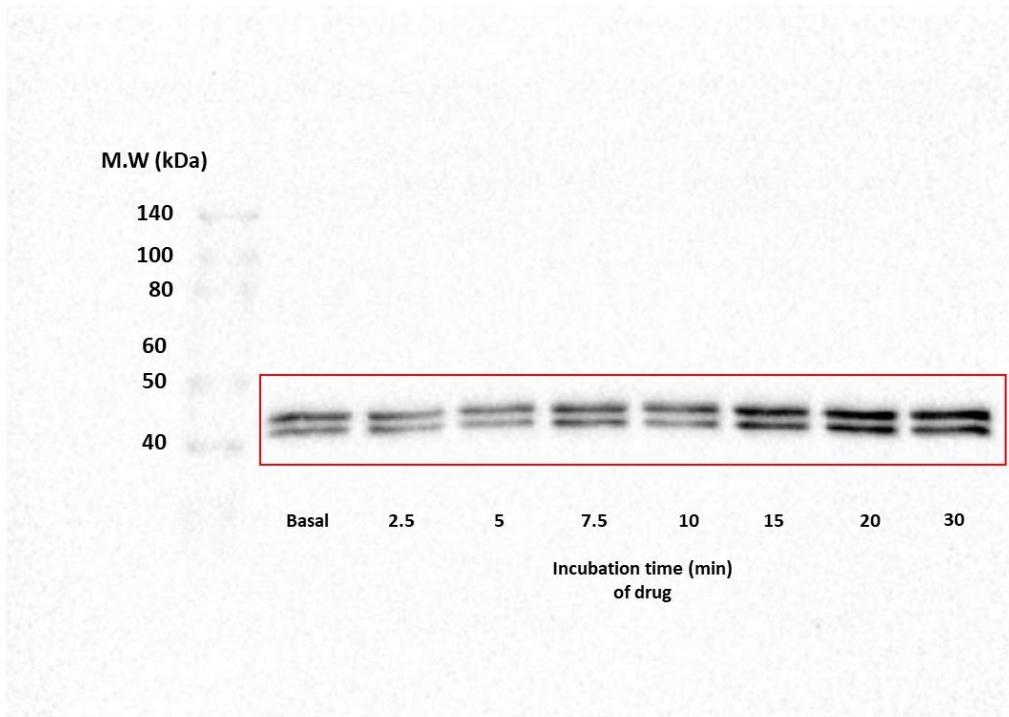
HEK_{MOP} DeNO phospho-ERK1/2



HEK_{MOP} DeNO Total ERK1/2

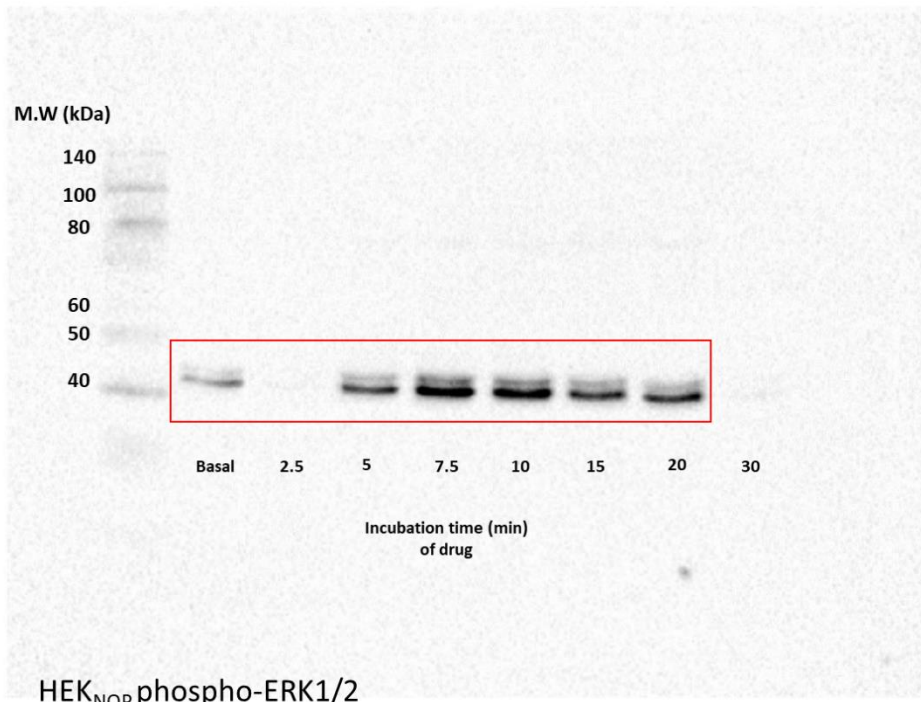


HEK_{MOP} De101 phospho-ERK1/2

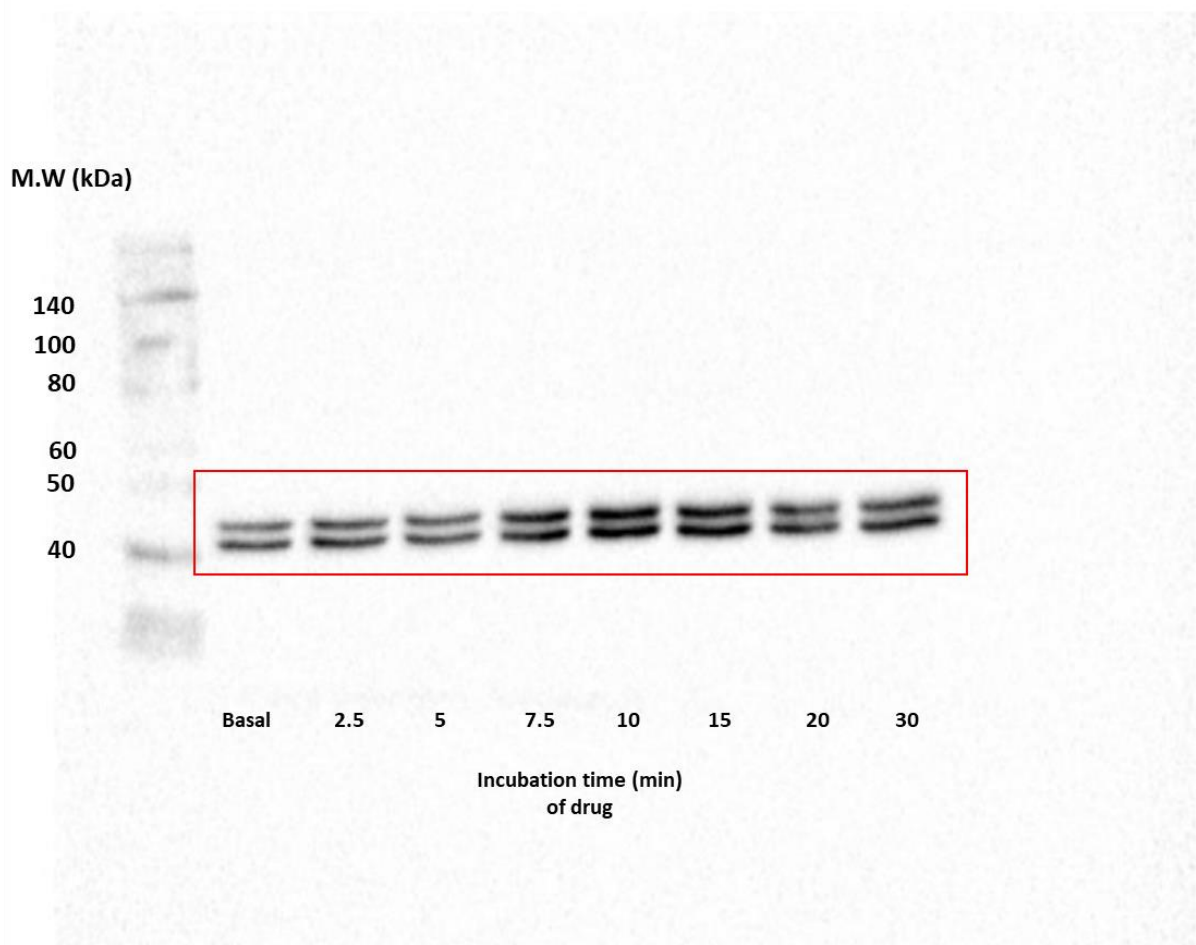


HEK_{MOP} De101 Total ERK1/2

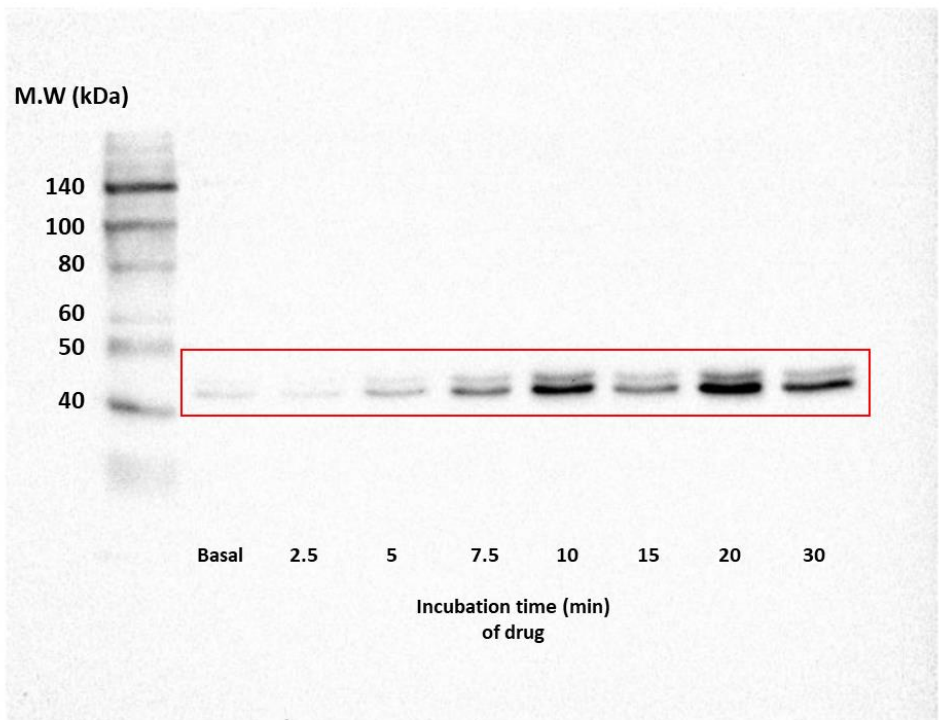
HEK_{NOP} Western blot results



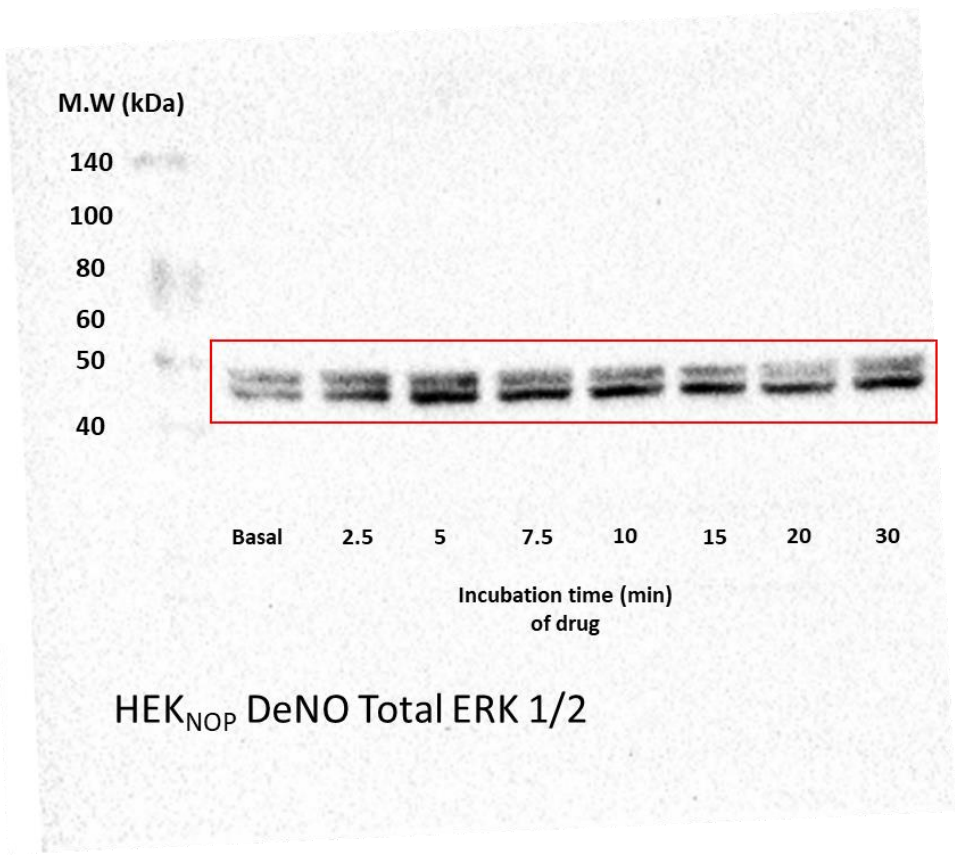
HEK_{NOP} phospho-ERK1/2



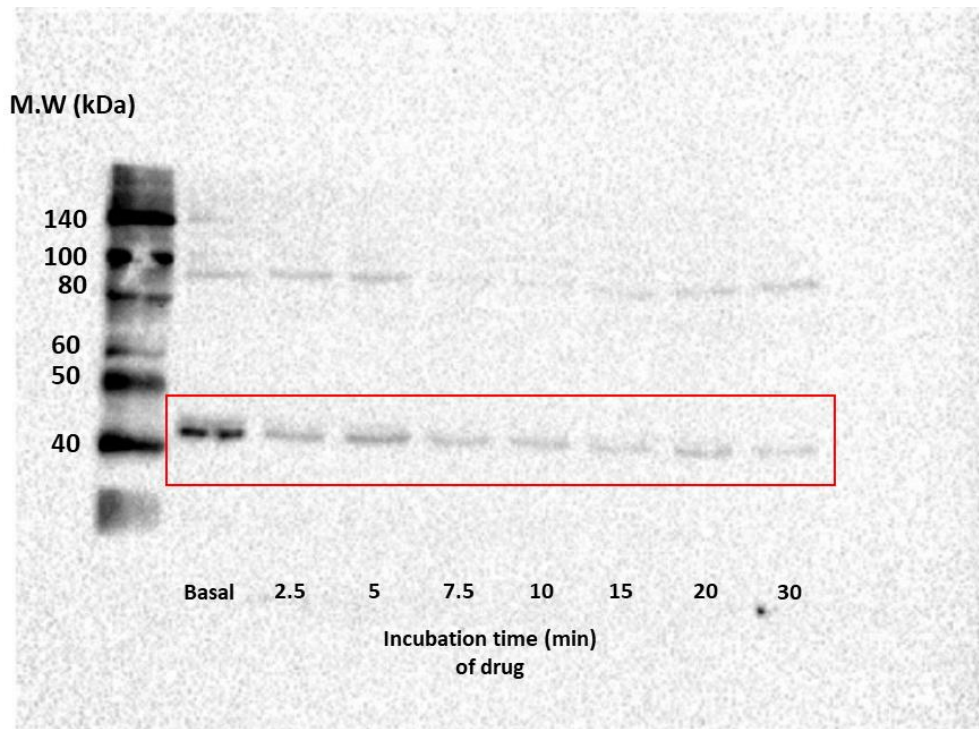
HEK_{NOP} N/OFQTotal ERK1/2



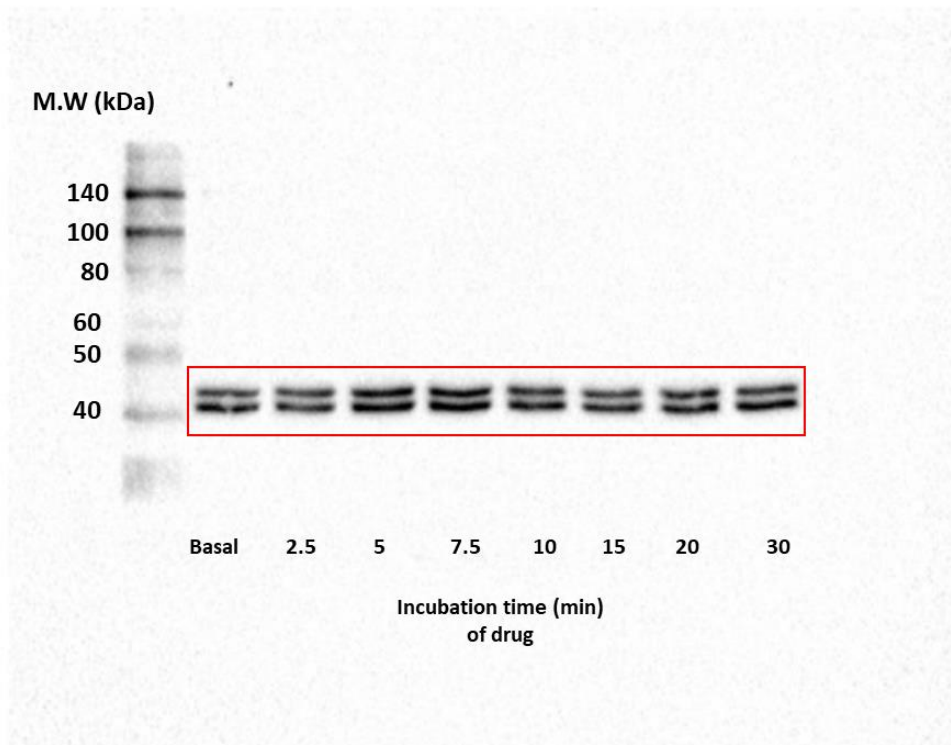
HEK_{NOP} DeNO phospho-ERK1/2



HEK_{NOP} DeNO Total ERK 1/2

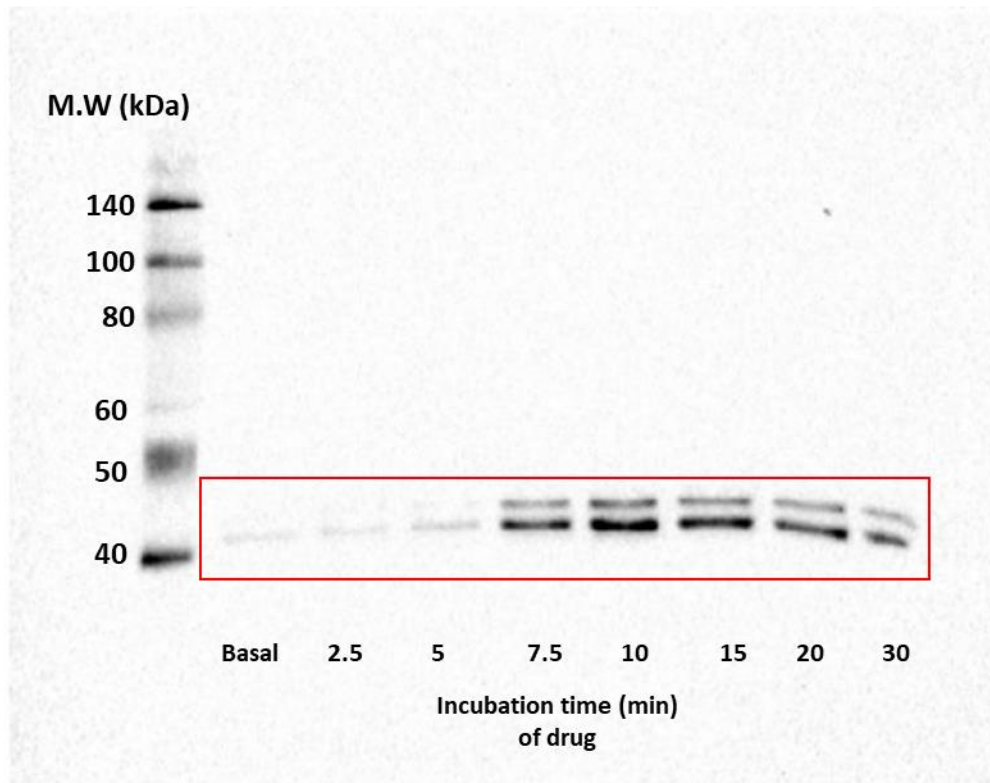


HEK_{NOP} De101 phospho-ERK1/2

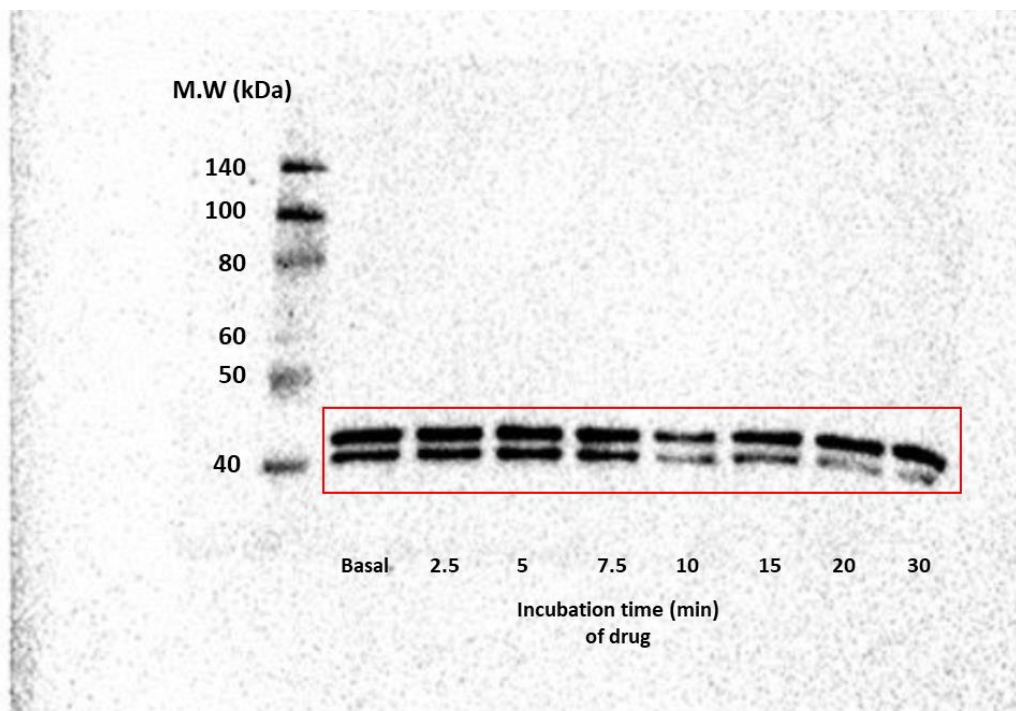


HEK_{NOP} De101 Total ERK1/2

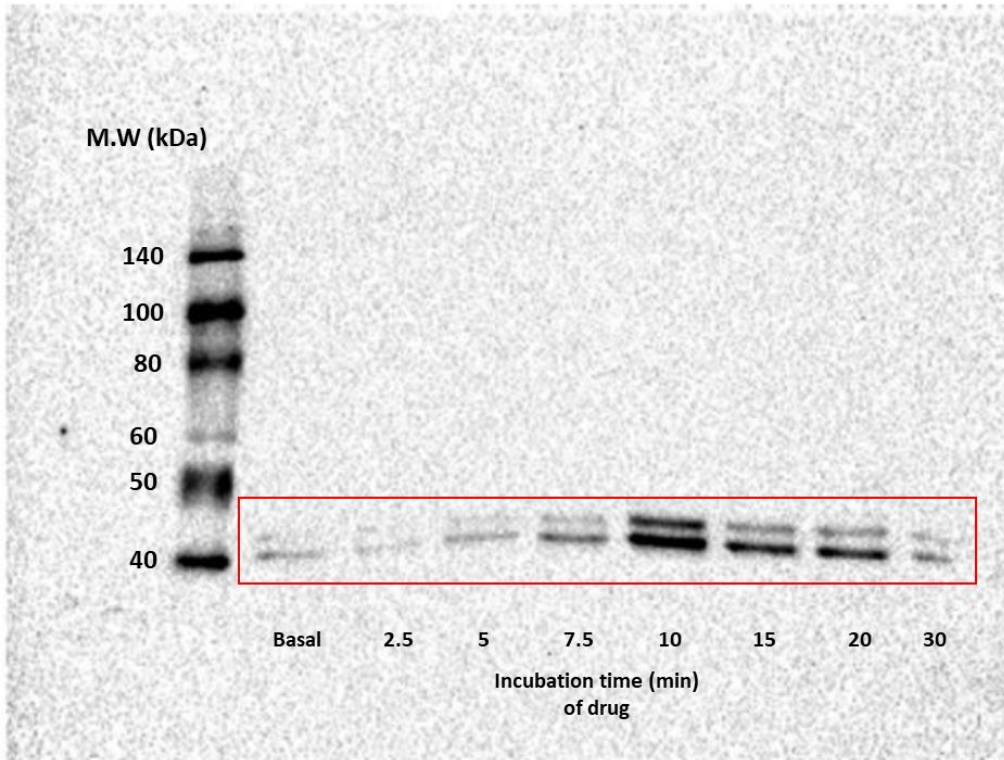
HEK_{MOP/NOP} Western blot results



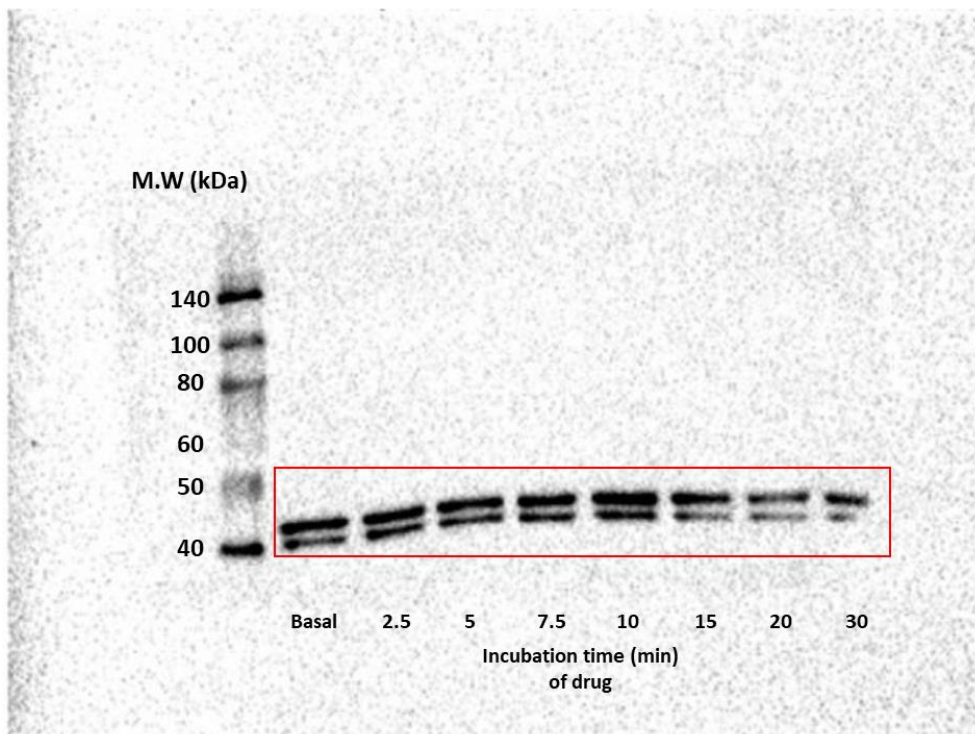
HEK_{MOP/NOP} Dermorphin phospho-ERK1/2



HEK_{MOP/NOP} Dermorphin Total ERK1/2

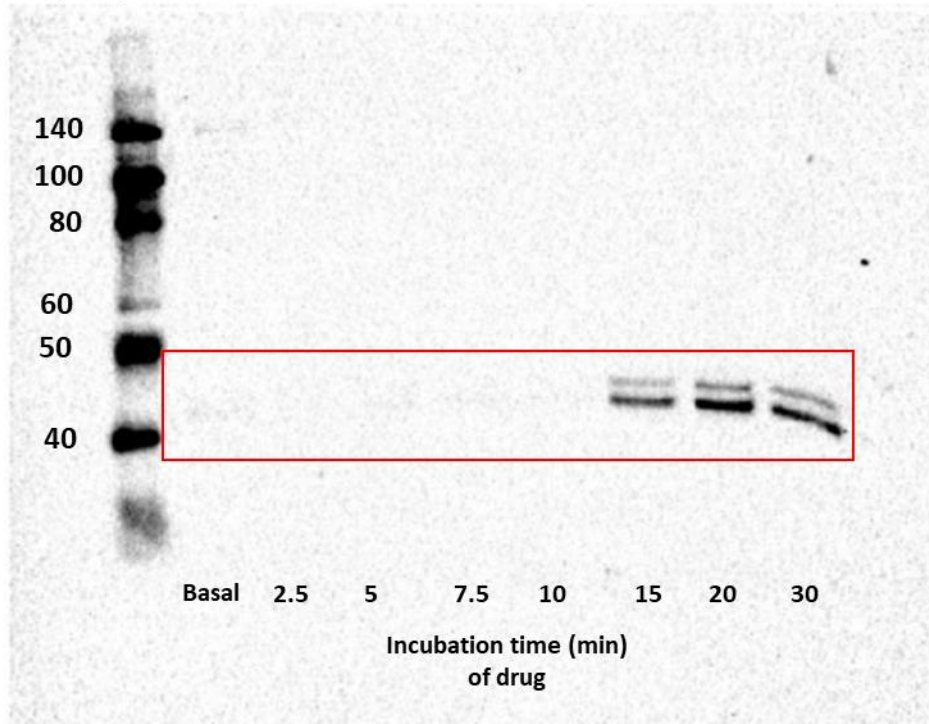


HEK_{MOP/NOP} N/OFQ phospho-ERK1/2

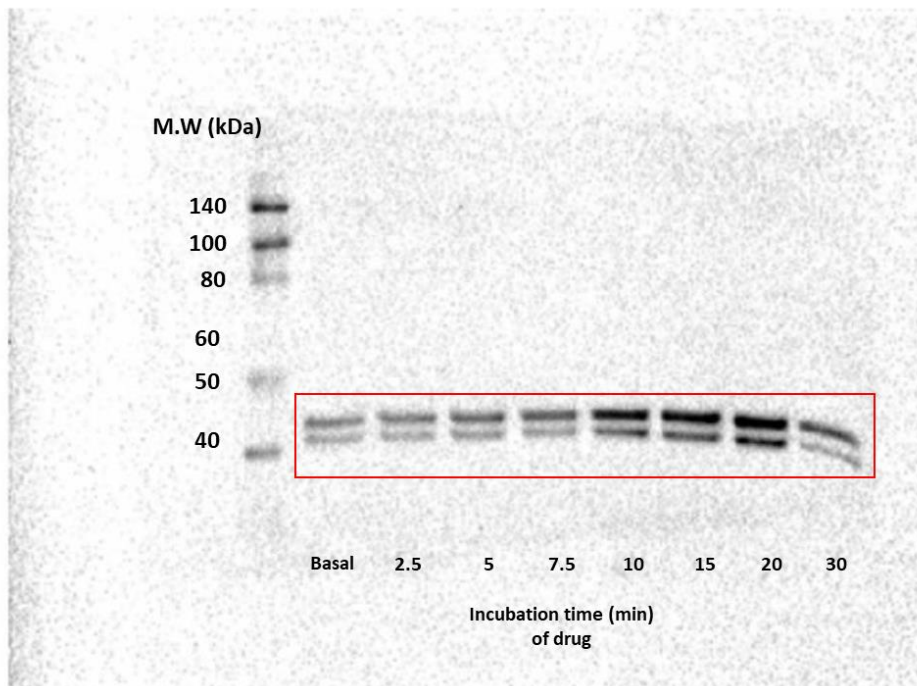


HEK_{MOP/NOP} N/OFQ Total ERK 1/2

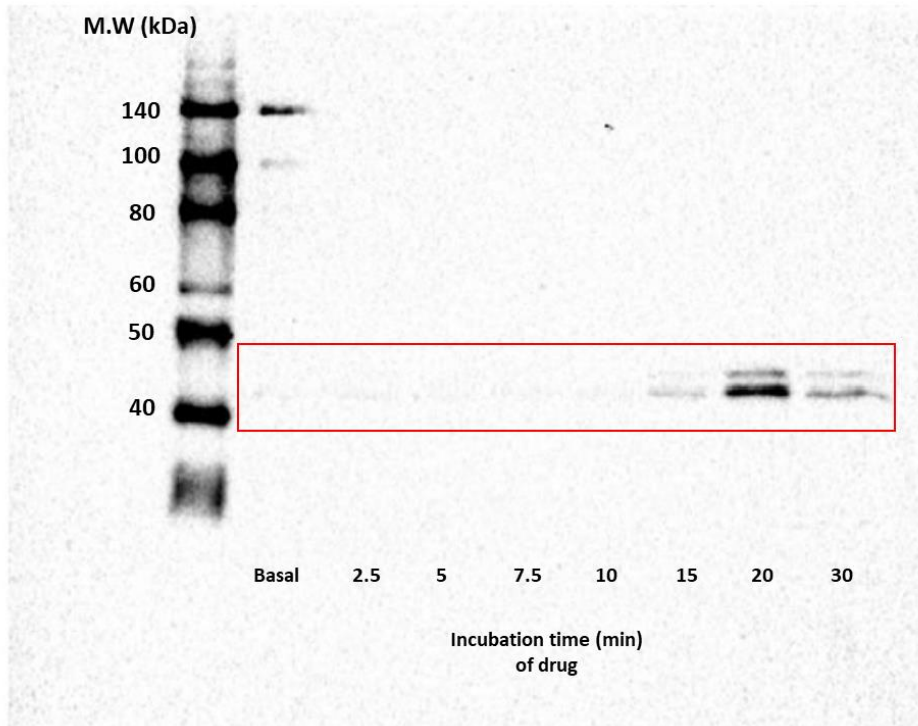
M.W (kDa)



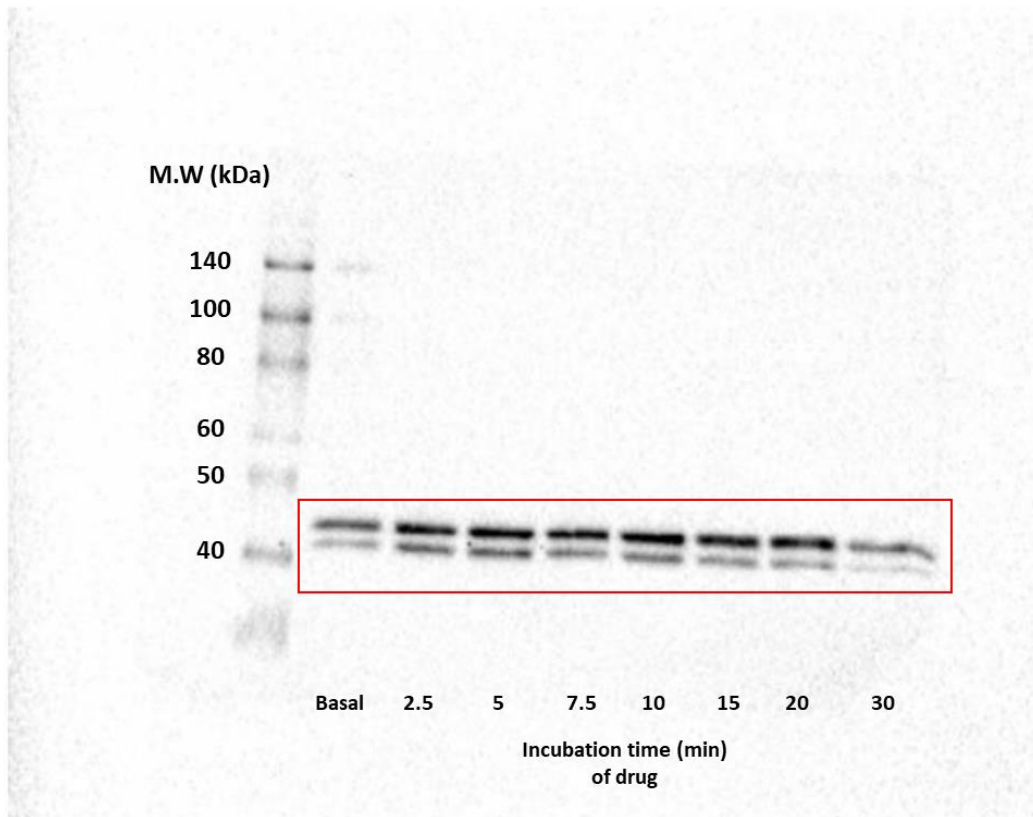
HEK_{MOP/NOP} DeNO phosphor-ERK1/2



HEK_{MOP/NOP} DeNO Total ERK1/2



HEK_{MOP/NOP} De101 phospho-ERK1/2



HEK_{MOP/NOP} De101 Total ERK1/2