

Supplemental Figure 1: FSGS Kaplan-Meier curves for renal survival in the whole cohort

Supplemental Figure 2: FSGS Kaplan-Meier curves for renal survival: A) Black patients vs. White patients and B) Hispanic patients vs. Non-Hispanic patients C) Patients with BMI >30 vs. BMI <30

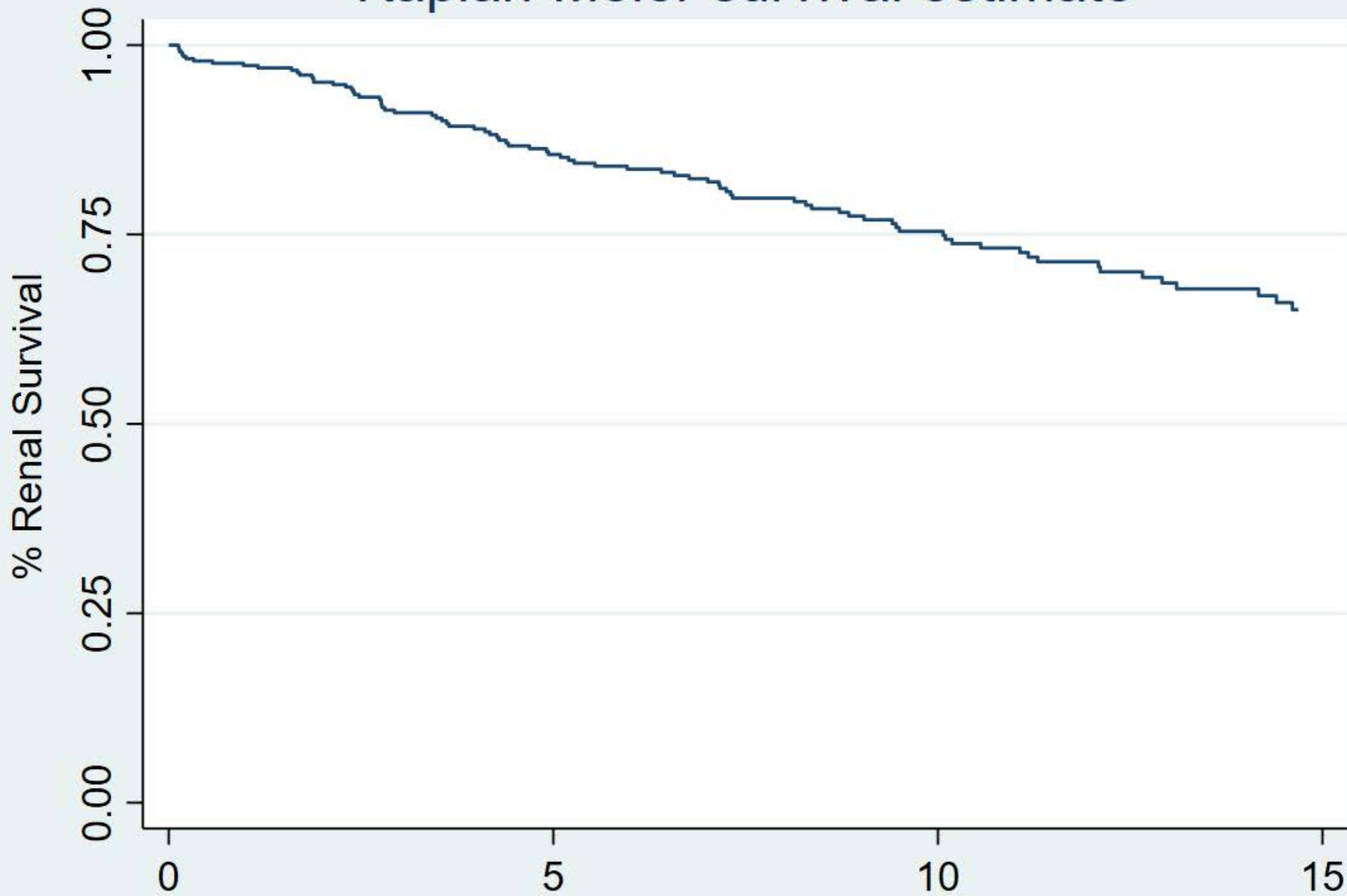
Supplemental Figure 3: FSGS Kaplan-Meier curves for renal survival: A) IgM positive immunofluorescence versus IgM negative immunofluorescence; B) C3 positive immunofluorescence versus C3 negative immunofluorescence; C) IgM and C3 positive immunofluorescence versus IgM and C3 negative immunofluorescence.

Supplemental Figure 4: FSGS Kaplan-Meier curves for renal survival: A) Immunosuppression treatment (IST) versus no IST stratified by estimate glomerular filtration rate  $\geq 60$  ml/min; B) Immunosuppression treatment (IST) versus no IST stratified by estimate glomerular filtration rate < 60 ml/min

Supplemental Figure 5: FSGS Kaplan-Meier curves for renal survival for Immunosuppression treatment (IST) versus no IST stratified by interstitial inflammation  $\geq 15\%$

Supplemental Figure 6: FSGS Kaplan-Meier curve for renal survival for immunosuppression treatment (IST) versus no IST stratified by Black race

# Kaplan-Meier survival estimate



Number at risk

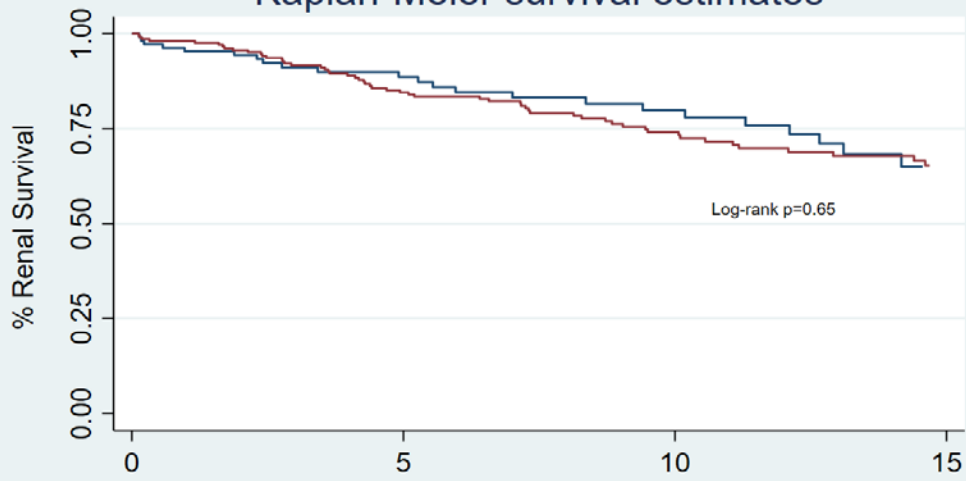
336

225

141

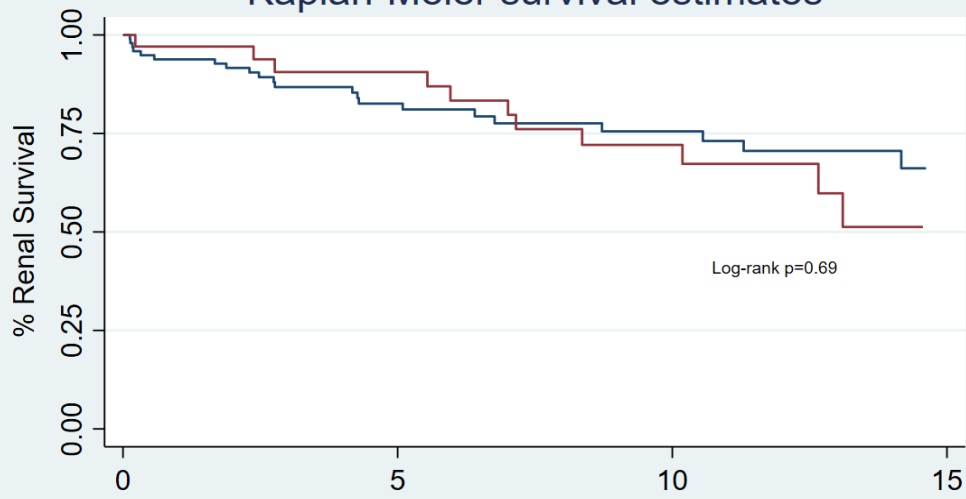
65

### Kaplan-Meier survival estimates



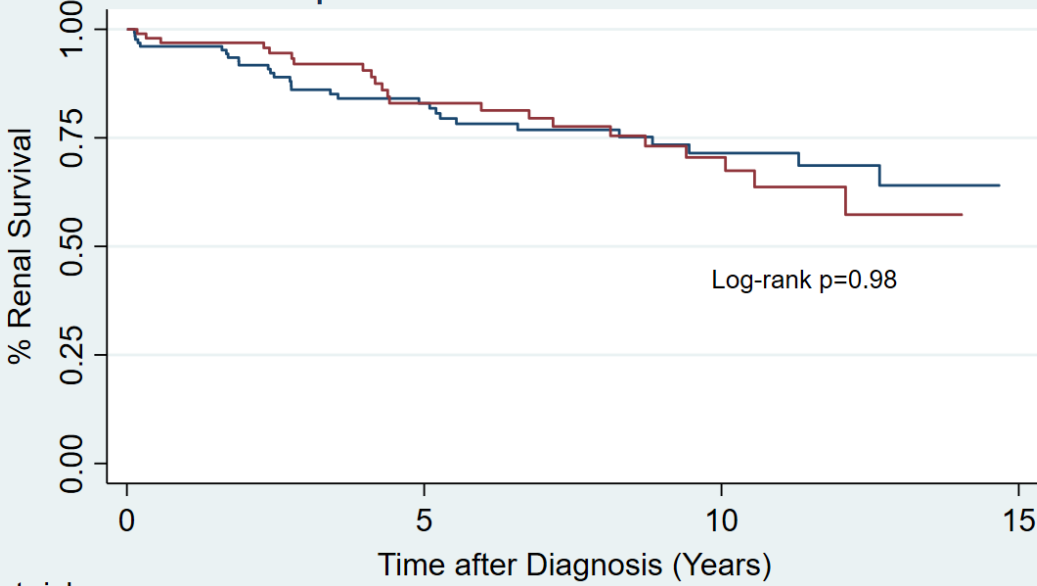
Number at risk		Time after Diagnosis (Years)			
	0	5	10	15	
White	109	68	44	18	
Black	214	151	94	46	

### Kaplan-Meier survival estimates



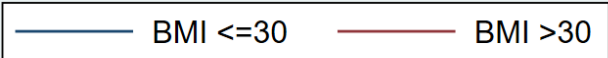
Number at risk		Time after Diagnosis (Years)			
	0	5	10	15	
Non-Hispanic	97	57	33	14	
Hispanic	34	25	15	4	

### Kaplan-Meier survival estimates

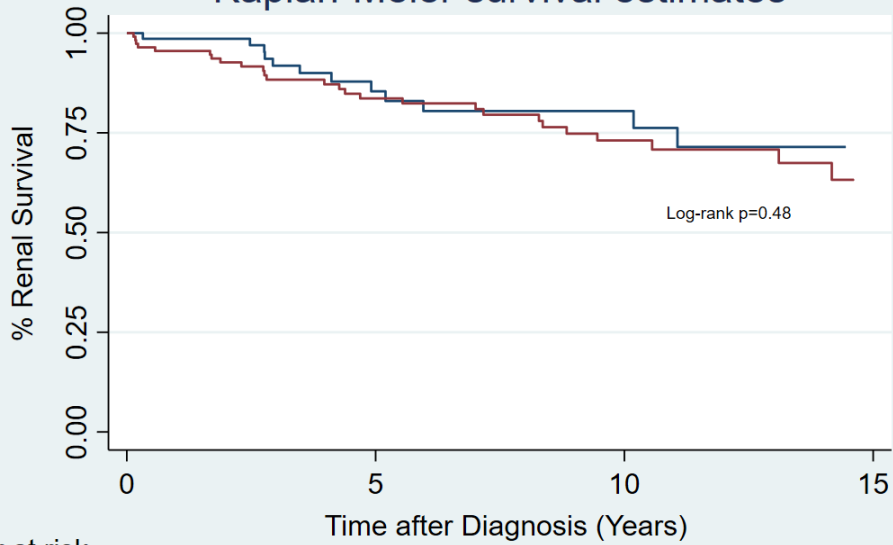


Number at risk

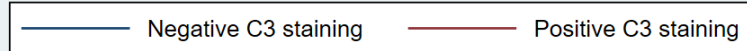
BMI<=30	128	74	34	3
BMI>30	98	53	23	0



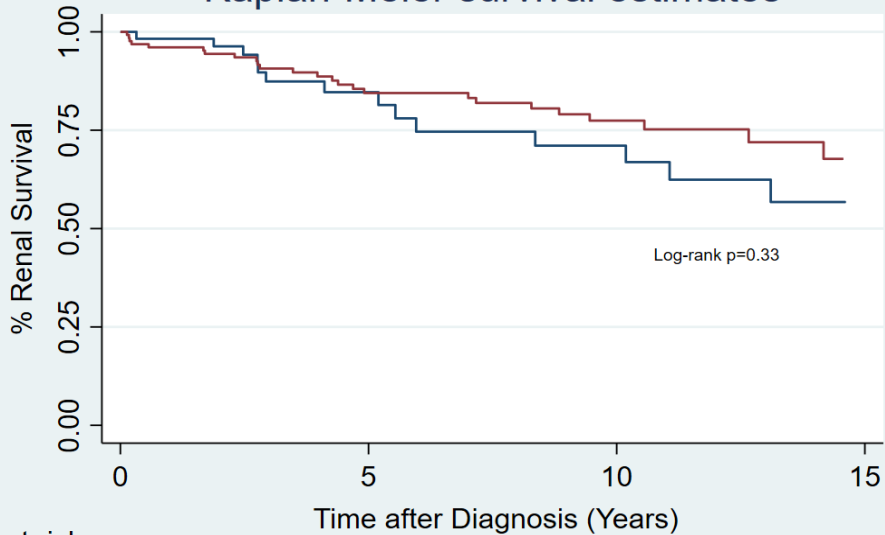
### Kaplan-Meier survival estimates



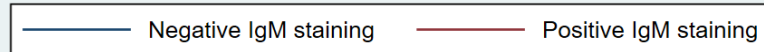
Number at risk					
Negative C3 staining	72		35	20	7
Positive C3 staining	113		70	39	12



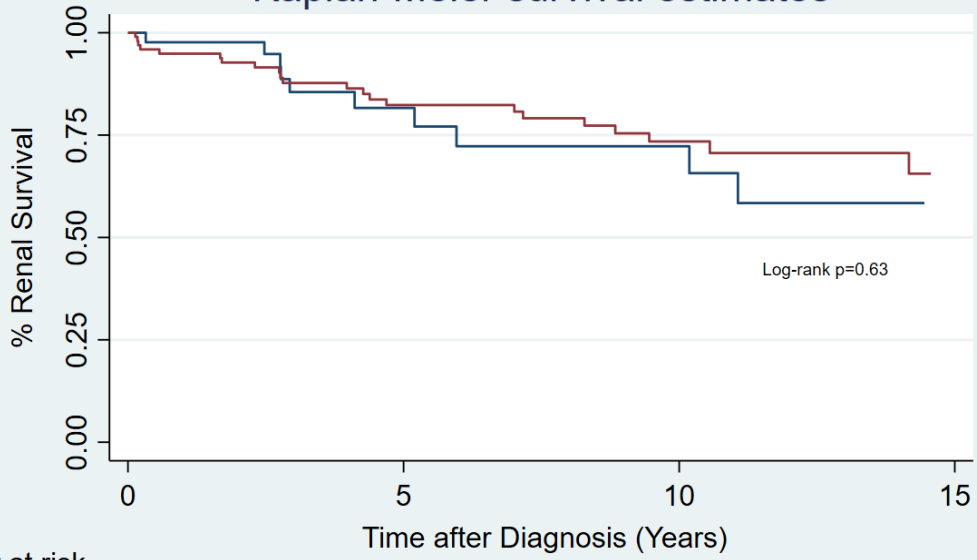
### Kaplan-Meier survival estimates



Number at risk					
Negative IgM staining	58		27	17	5
Positive IgM staining	128		79	43	14



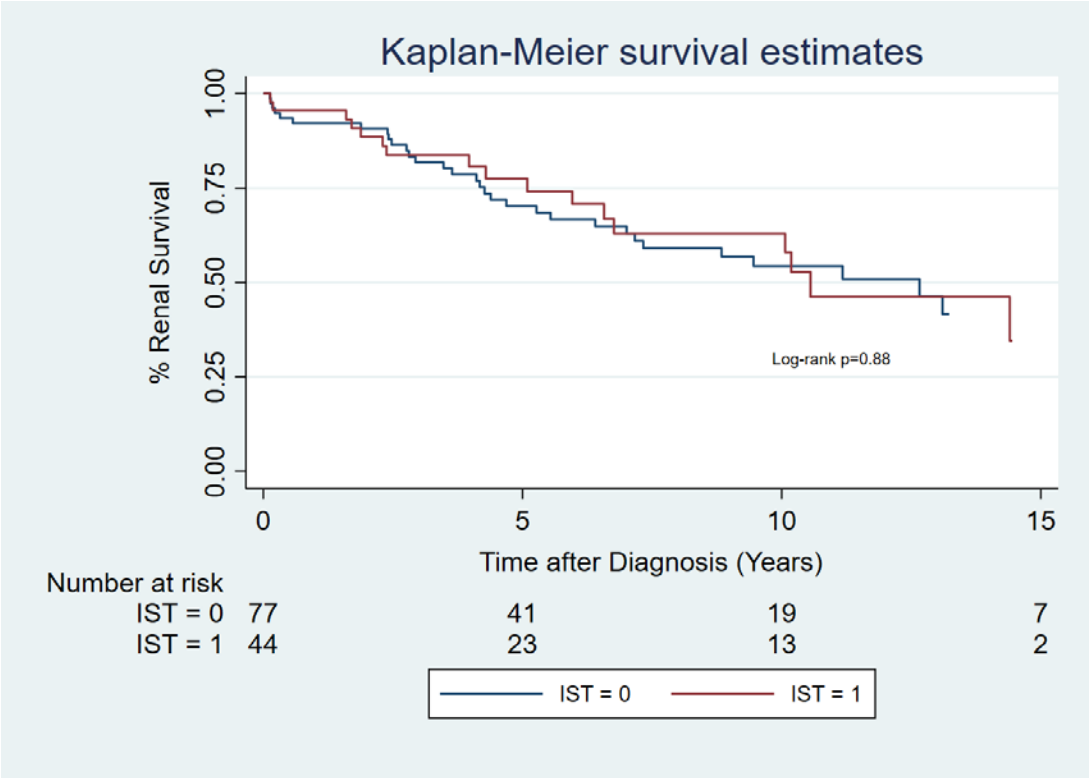
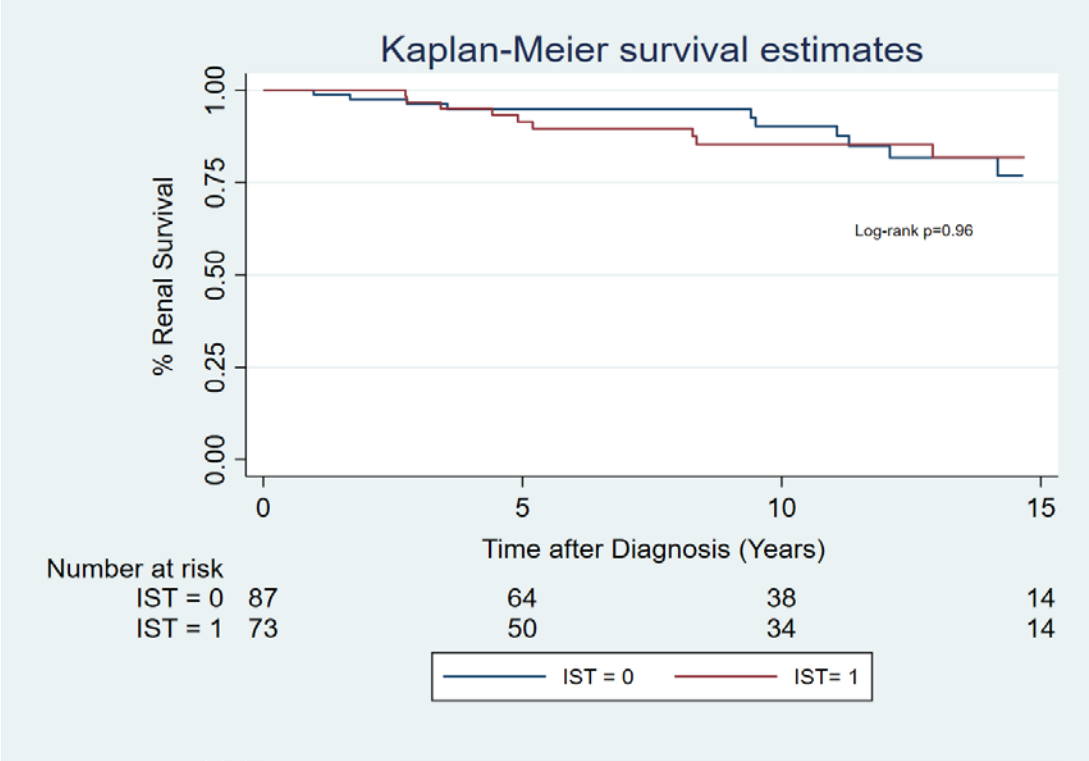
### Kaplan-Meier survival estimates



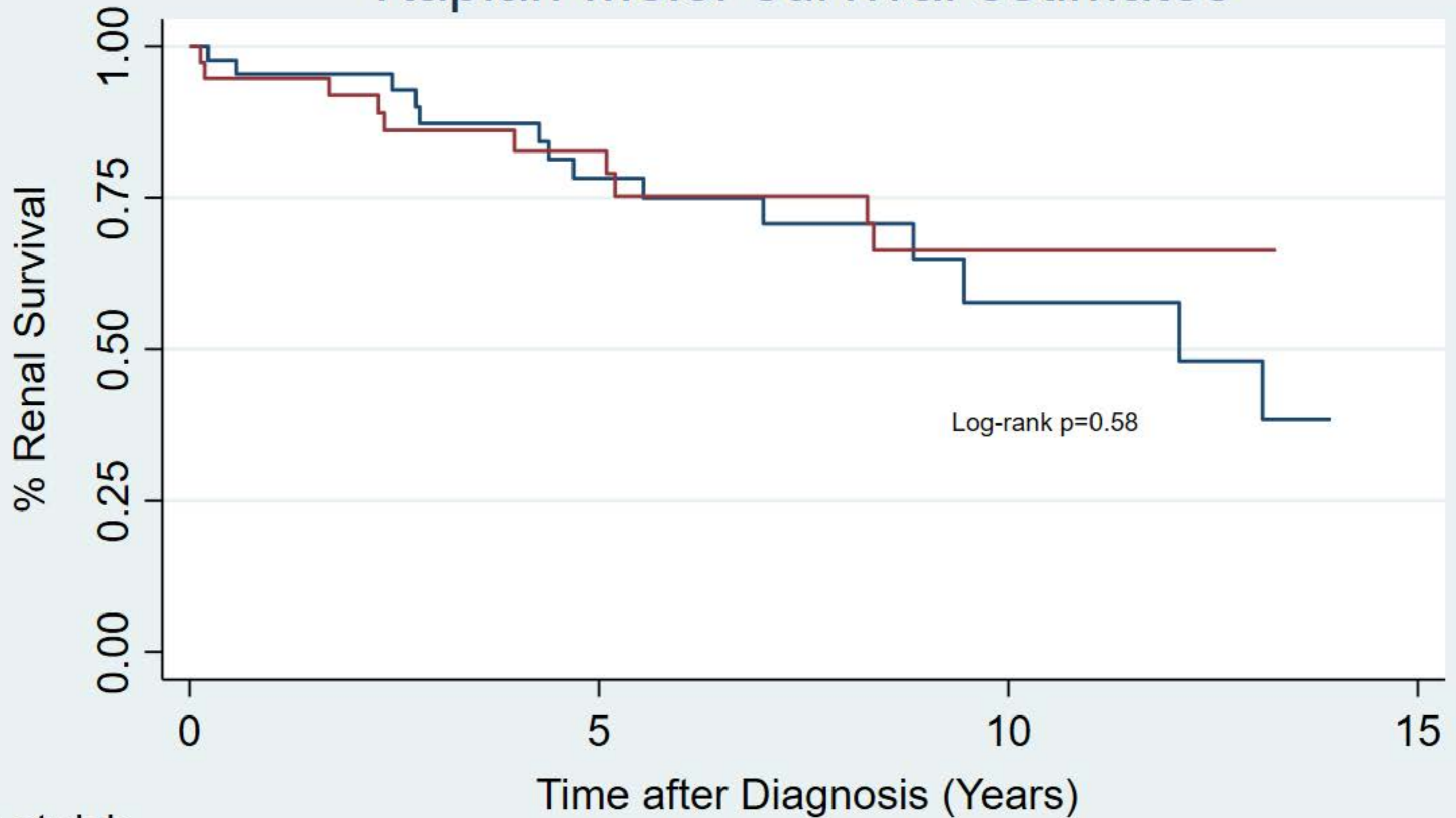
Number at risk

c3-/IgM-	44	18	11	4
c3+/IgM+	99	61	33	11





# Kaplan-Meier survival estimates



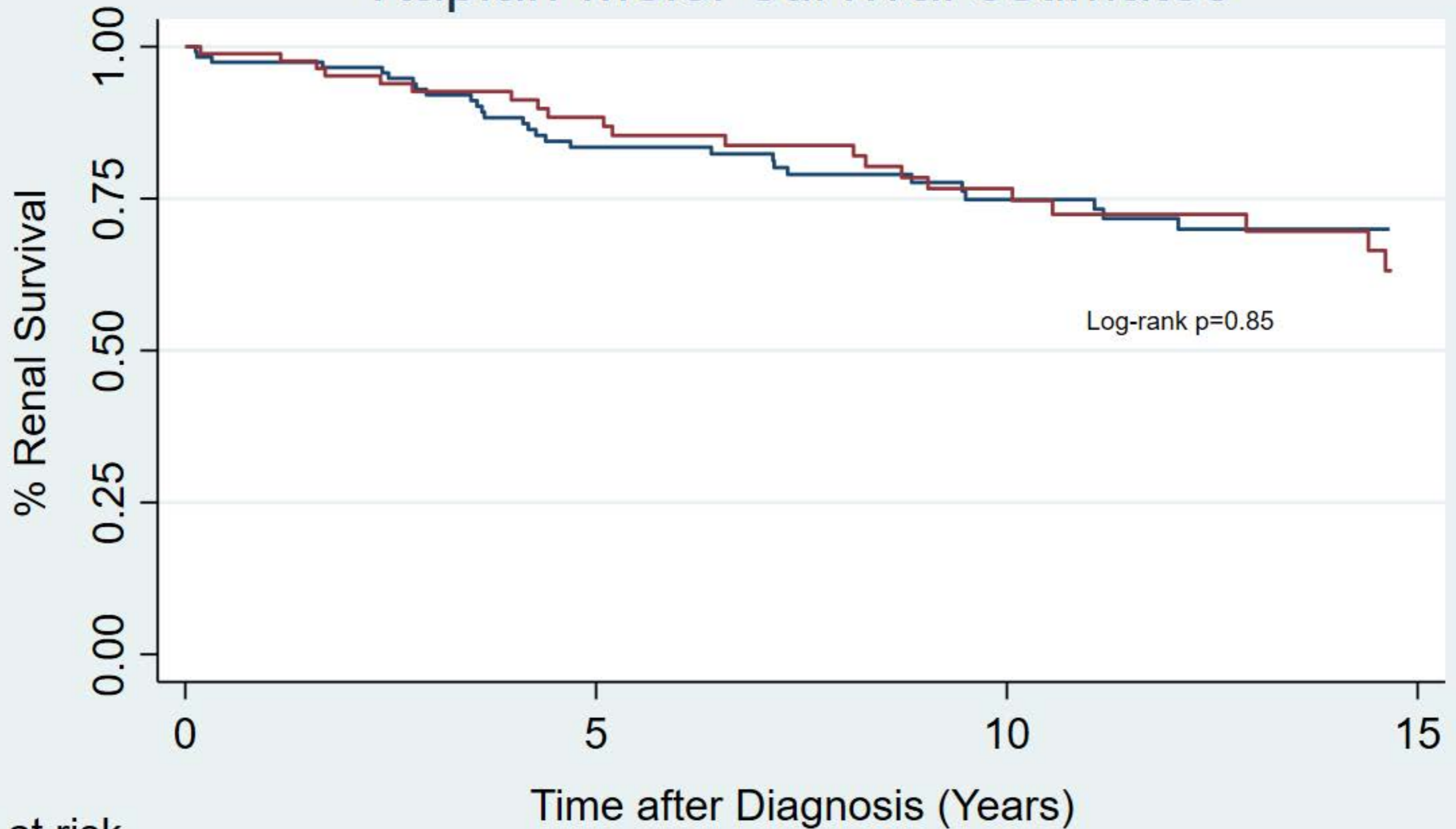
Number at risk

IST = 0	45	25	8	2
IST = 1	38	22	11	1





# Kaplan-Meier survival estimates



Number at risk

IST = 0	119	86	51	27
IST = 1	86	59	39	17

