

iScience, Volume 25

Supplemental information

**An exquisitely preserved *in-ovo*
theropod dinosaur embryo sheds light
on avian-like prehatching postures**

Lida Xing, Kecheng Niu, Waisum Ma, Darla K. Zelenitsky, Tzu-Ruei Yang, and Stephen L. Brusatte

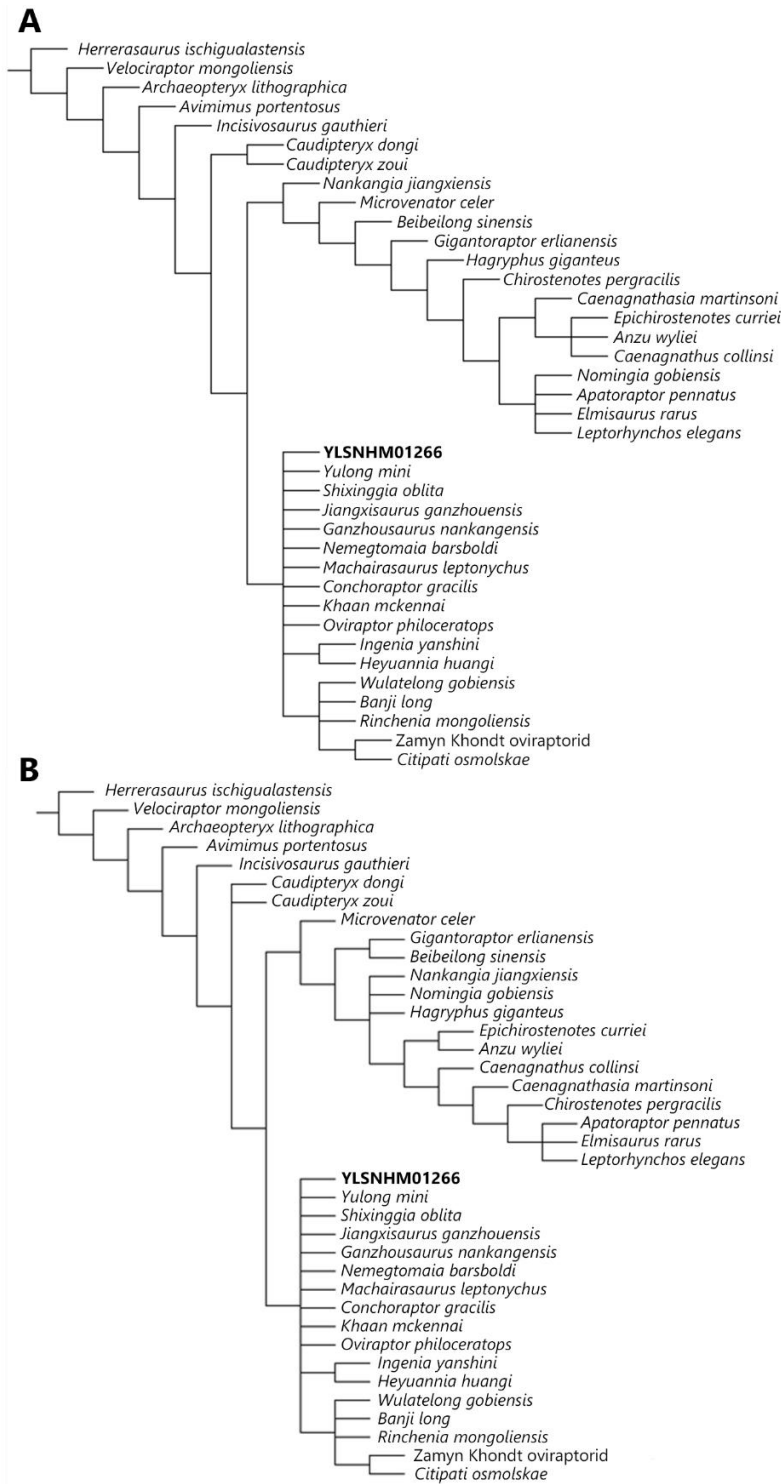


Figure S1. Phylogenetic position of YLSNHM01266. Related to STAR Methods. (A) Strict consensus tree of 72 most parsimonious trees, based on a phylogenetic analysis which all possible characters were coded (consistency index = 0.492, retention index = 0.661). (B) Strict consensus tree of 432 most parsimonious trees, based on a phylogenetic analysis which putative ontogenetically-variable characters were coded as '?' (consistency index = 0.495, retention index = 0.663).

Table S1. Measurements of selected elements of YLSNHM01266. Related to Figure 1.
 Measurements are lengths unless otherwise stated. *estimated measurements.

Element	Measurement (cm)
Egg length	16.7
Egg width	7.6
Skull	4.5
Left scapula	3.2
Left ulna	3.0
Left radius	2.8
Ilium length	4.2
Ilium height	1.6
Left femur	4.5
Left tibia	5.4
Left fibula	4.6
Left metatarsal II	2.7*
Left metatarsal III	2.8*
Left metatarsal IV	2.6*
Left pedal phalanx IV-1	0.8
Right metatarsal II	2.5*
Right pedal phalanx II-1	0.7