

## *Supplementary Material*

### 1 Supplementary Tables

**Supplementary Table 1** Immunohistochemistry information

<b>Antibody</b>	<b>CD8</b>	<b>FOXP3</b>
<b>Type</b>	Anti-Rabbit	Anti-Mouse
<b>Concentration</b>	0.35 µg/ml	0.5 µg/ml
<b>Company</b>	Ventana	Thermofisher
<b>Clone</b>	SP57	236A/E7
<b>Lot number</b>	Y04591	4339062
<b>Procedure</b>	Optiview CC1 16'	Optiview CC1 32'
<b>Antibody incubation time</b>	32 minutes	32 minutes

Supplementary Table 2 Cell type-specific marker genes for immune cells

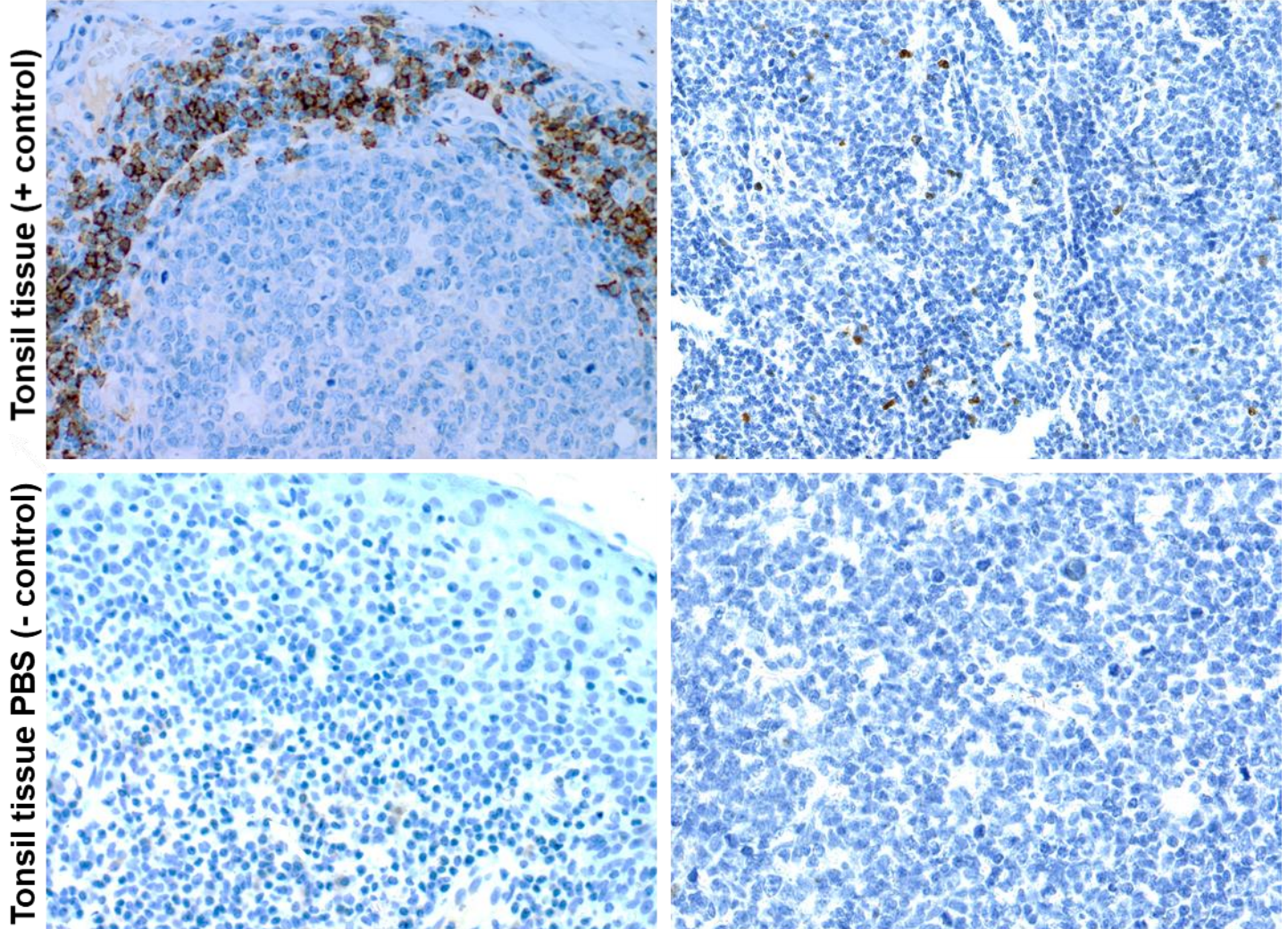
Cell name	Marker genes	CCNR		CCLR		CCDR		HC	
		C	Slope	C	Slope	C	Slope	C	Slope
<b>CD80<sup>+</sup>/CD86<sup>+</sup> Macrophages</b>	<i>CD80/CD86</i>	0.85	0.81	0.78	1.12	0.96	0.77	0.88	0.71
<b>CD163<sup>+</sup>/MRC1<sup>+</sup> Macrophages</b>	<i>CD163/MRC1</i>	0.65	0.84	0.66	1.06	0.83	0.61	0.52	0.64
<b>Plasma B-cells</b>	<i>CD27/CD38</i>	0.82	0.87	0.69	0.92	0.61	0.67	0.28	0.32
	<i>CD27/SLAMF7</i>	0.90	0.94	0.95	0.86	0.94	1.14	0.92	0.66
	<i>SLAMF7/CD38</i>	0.91	0.88	0.70	0.47	0.71	0.78	0.23	0.14
<b>CD4<sup>+</sup> T-cells</b>	<i>CD4/SELL</i>	0.79	0.97	0.63	0.92	0.84	1.35	0.61	1.34
<b>Neutrophils</b>	<i>CSF3R/FPR1</i>	0.77	0.66	0.91	0.84	0.95	0.93	0.77	0.68
	<i>FPR1/FCGR3a/b</i>	0.77	0.43	0.84	0.69	0.89	0.39	0.88	1.06
	<i>CSF3R/ FCGR3a/b</i>	0.51	0.76	0.81	0.79	0.82	0.37	0.76	1.03
<b>Monocytes</b>	<i>TLR2/CD14</i>	0.69	0.73	0.83	0.68	0.61	0.53	0.18	0.38
	<i>TLR2/TLR4</i>	0.72	0.67	0.83	0.76	0.71	0.78	0.39	0.62
	<i>TLR4/CD14</i>	0.88	0.77	0.88	0.97	0.84	1.06	0.39	0.3
<b>Tregs</b>	<i>FoxP3a/IL2RA</i>	0.73	0.71	0.75	0.62	0.90	0.80	0.95	0.92
<b>CD45<sup>+</sup> lymphocytes</b>	<i>CD45RO/PTPRC</i>	0.95	1.04	0.98	0.88	0.99	1.04	0.97	1
<b>CD8<sup>+</sup> T-cells</b>	<i>CD8A/CD8B</i>	0.68	0.62	0.73	0.74	0.62	0.63	- 0.14	-0.13
<b>NK cells</b>	<i>XCL1/2/NRC1</i>	0.72	1.12	0.32	0.38	0.84	0.77	0.89	1.57
<b>T-cells</b>	<i>CD6/CD3G</i>	0.80	0.91	0.57	0.62	0.92	0.90	0.94	0.96
	<i>CD6/SH2D1A</i>	0.84	1.24	0.82	0.83	0.97	1.09	0.97	1.12
	<i>CD6/TRAT1</i>	0.77	1.03	0.86	0.84	0.90	0.84	0.91	0.74
	<i>CD6/CD3E</i>	0.89	1.03	0.70	0.72	0.94	0.69	0.71	0.69
	<i>CD3G/SH2D1A</i>	0.92	1.18	0.87	0.81	0.96	1.09	0.92	1.03
	<i>CD3G/TRAT1</i>	0.91	1.07	0.79	0.71	0.94	0.90	0.98	0.79
	<i>CD3G/CD3E</i>	0.93	0.95	0.91	0.86	0.94	0.69	0.67	0.64
	<i>SH2D1A/TRAT1</i>	0.96	0.88	0.87	0.84	0.96	0.81	0.88	0.63
	<i>SH2D1A/CD3E</i>	0.95	0.74	0.90	0.91	0.94	0.62	0.88	0.61
<i>TRAT1/CD3E</i>	0.95	0.82	0.78	0.82	0.91	0.70	0.64	0.76	

2 Supplementary Figures

Immunohistochemistry positive and negative controls

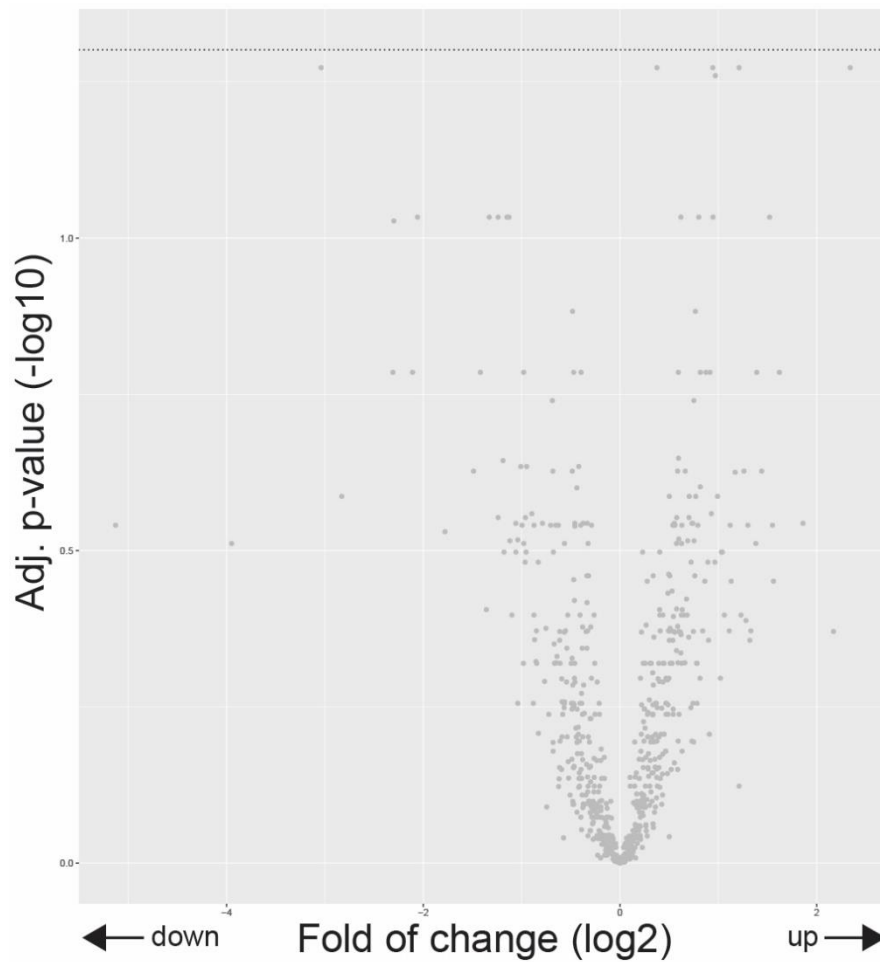
CD8+

FOXP3+



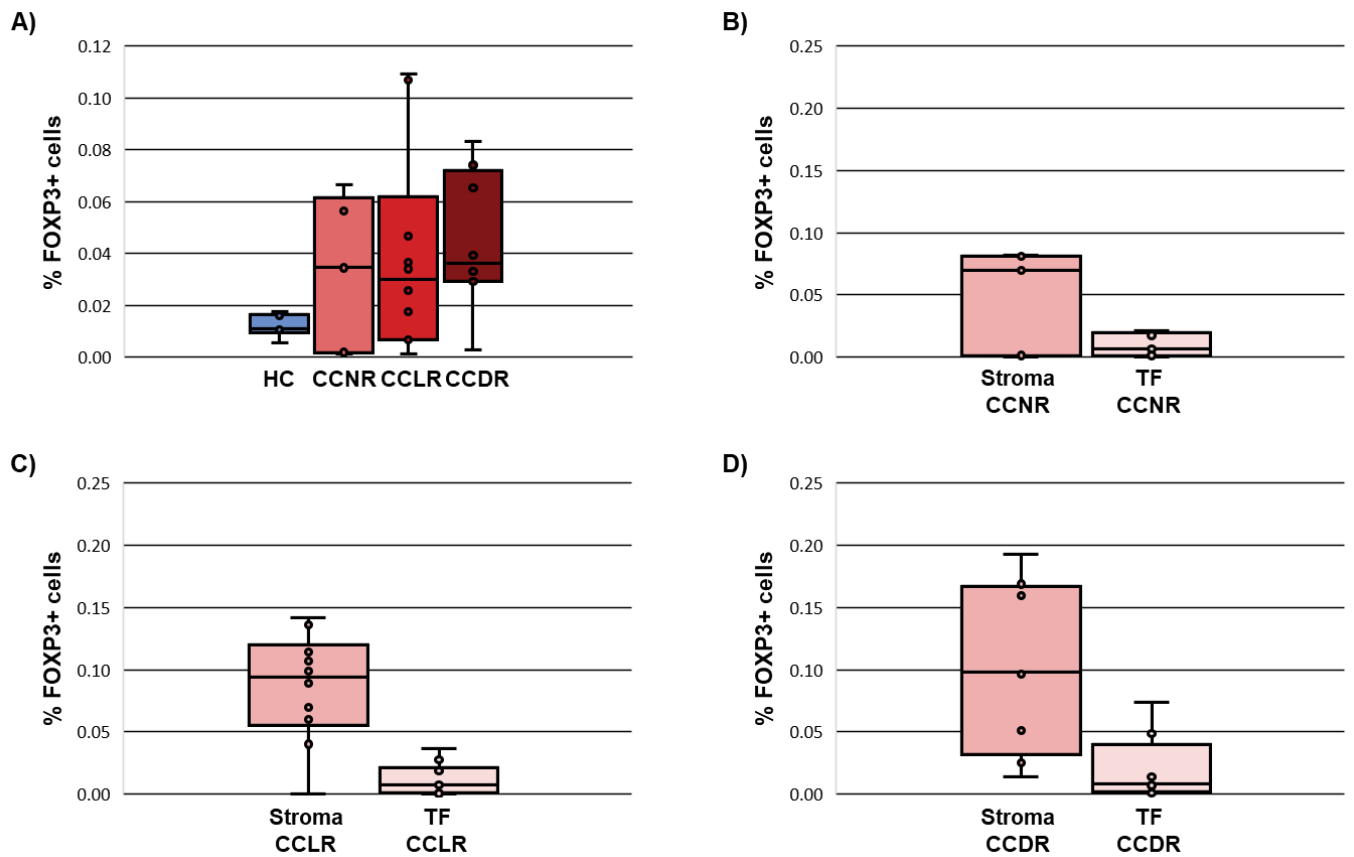
**Supplementary Figure 1.** Representative images for immunohistochemical staining of CD8 and FOXP3 in tonsil tissue (positive control) and tonsil tissue treated with PBS (negative control).

## Gene expression alterations in CCLR



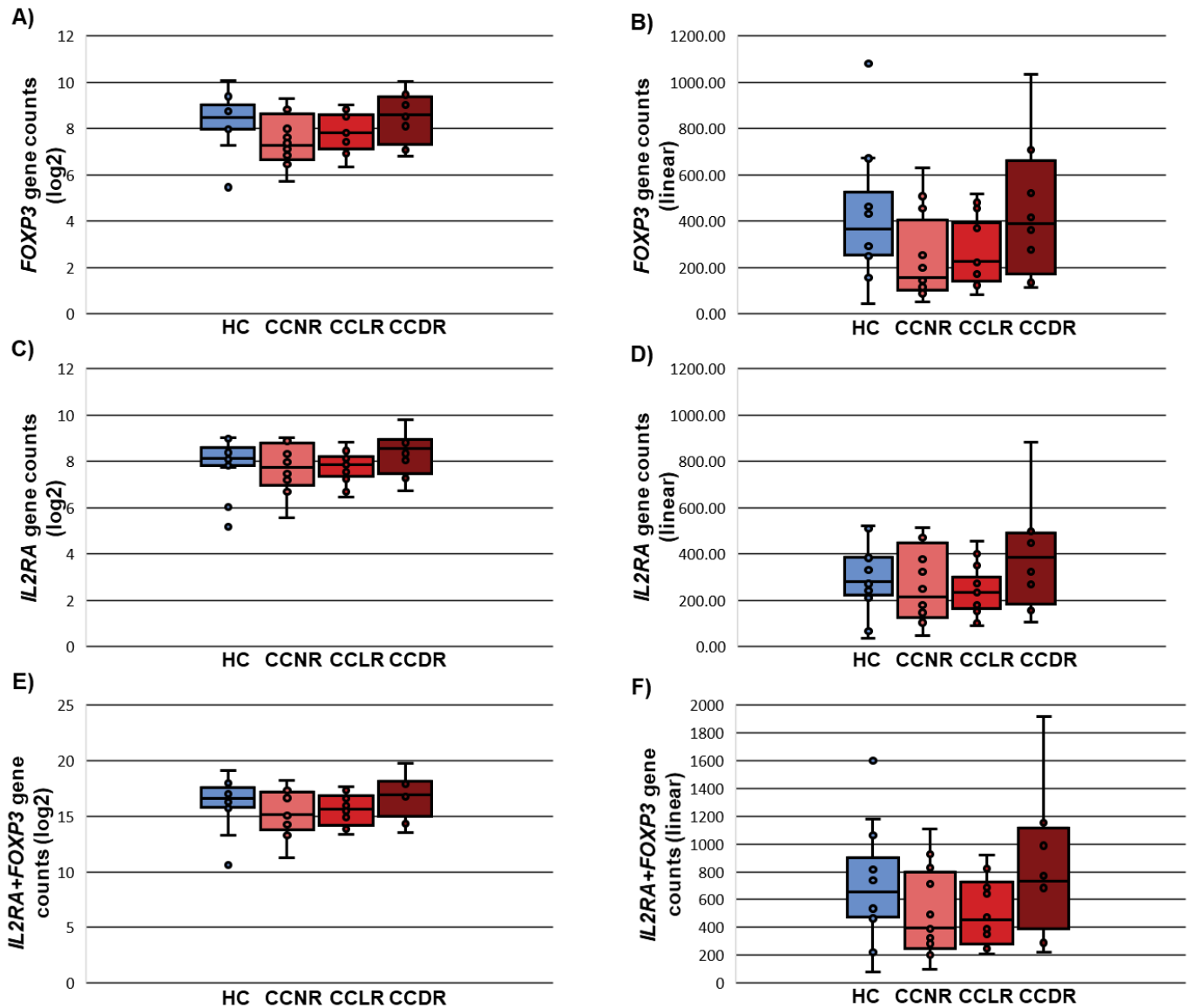
**Supplementary Figure 2.** Volcano plot showing over- and underexpressed genes in CCLR. Each dot represents a gene of the nCounter® PanCancer IO 360 Gene Expression Panel. Y-axis: p-values after the Benjamini-Hochberg procedure ( $-\log_{10}$  scale). X-axis: Fold of change is calculated with CCNR as baseline reference ( $\log_2$  ratio). Arrows indicate up- or downregulation. CCNR: Cervical cancer no recurrence; CCLR: Cervical cancer local recurrence.

### Density of FoxP3+ cells in cervical cancer tissues and healthy controls



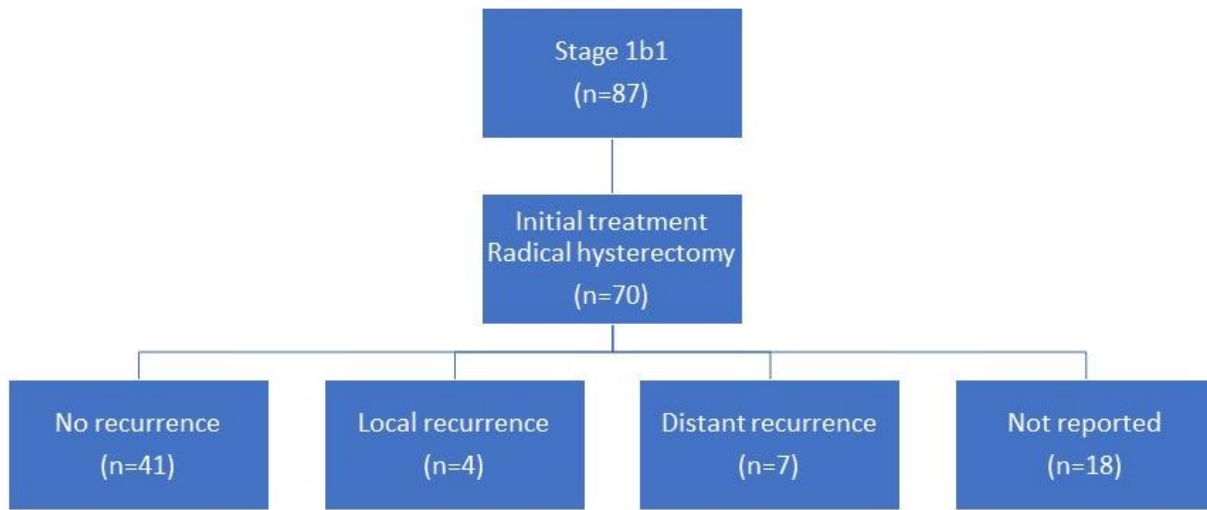
**Supplementary Figure 3.** The percentage of FoxP3+ cells is calculated according to surface FoxP3+ cells/surface of all cells \*100. A) Density FoxP3+ cells in all groups. B) Density FoxP3+ cells in CCNR comparing stromal tissue and tumor fields. C) Density FoxP3+ cells in CCLR comparing stromal tissue and tumor fields. D) Density FoxP3+ cells in CCDR comparing stromal tissue and tumor fields. TF: Tumor fields; HC: Healthy controls; CCLR: Cervical cancer local recurrence; CCDR: Cervical cancer distant recurrence; CCNR: Cervical cancer no recurrence

## Expression of marker genes FoxP3 and IL2RA



**Supplementary Figure 4.** The gene counts for FoxP3 and IL2RA are shown in both linear and log<sub>2</sub> scales for all study groups. A) FoxP3 gene counts in log<sub>2</sub>-scale. B) FoxP3 gene counts in linear scale. C) IL2RA gene counts in log<sub>2</sub>-scale. D) IL2RA gene counts in a linear scale. E) Sum of FoxP3 and IL2RA gene counts in log<sub>2</sub>-scale. F) Sum of FoxP3 and IL2RA gene counts in linear scale. HC: Healthy controls; CCLR: Cervical cancer local recurrence; CCNR: Cervical cancer no recurrence; CCDR: Cervical cancer distant recurrence

### Summary of the TCGA cervical cancer data



**Supplementary Figure 5:** The number of cervical cancer samples available in the TCGA data.