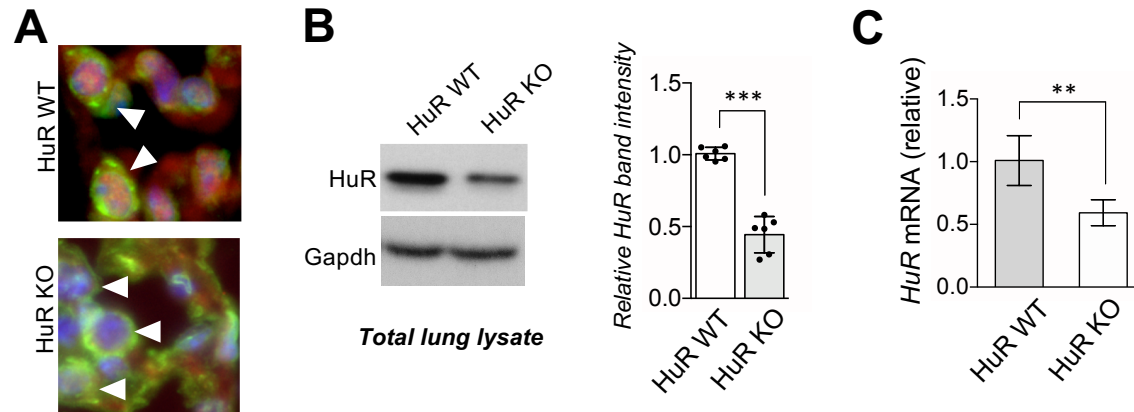


Supplementary Figure 1.



Supplementary Figure 1. A. Paraffin-embedded sections of SPCrtTA/tetO-CRE/ HuR^{flx/flx} (HuR-KO) and SPCrtTA /tetO-CRE/ HuR^{flx/wt} (HuR WT) lungs were stained for HuR (red) and pro-SP-C (green), DAPI (blue) stained the nucleus. A subset of alveolar type II cells (pro-SP-C) is indicated with arrowheads.

B. Left: western blot analysis of HuR and Gapdh in lung homogenates from HuR^{flx/wt} (HuR WT) and HuR^{flx/flx} (HuR KO) mice expressing SP-CrtTA/tetO-CRE (n = 6/group), treated as in Fig. 1A, right: western blots were quantified by densitometry using ImageJ. **C.** Lung tissue from mice in (B) was snap frozen in liquid nitrogen followed by RNA extraction and real-time RT-PCR analysis. Throughout figure, data represent mean and s.d of biological replicates. **P* < 0.05, ***P* < 0.01 and ****P* < 0.001 by two-tailed Student t test; NS, not significant.