

Supporting Figure legends

Fig. S1 Rarefaction curves of bacterial communities in corals *X. umbellata* and *P. flava*. (a) ASV numbers with sequencing depth of 200,000 in *X. umbellata* and ASV numbers with sequencing depth of 80,000 in *P. flava*. (b) ASV numbers at the minimum library size with sequencing depth of 3,000 in corals *X. umbellata* and *P. flava*.

Fig. S2 Alpha diversity of bacterial communities at the minimum library size with sequencing depth of 3,000 in corals *X. umbellata* and *P. flava*. The asterisks indicate statistically significant differences compared to day 0 for each species separately (* $p < 0.05$; ** $p < 0.01$; *** $p < 0.001$). (a) Chao1 index. (b) Inverse Simpson Index. (c) ACE index. (d) Shannon diversity index.

Fig. S3 Multivariate dispersion of bacterial communities in corals *X. umbellata* and *P. flava*. The asterisks indicate statistically significant differences between groups (* $p < 0.05$; ** $p < 0.01$; *** $p < 0.001$).

Fig. S4 The fluctuations in salinity (daily measurement) throughout the experiment. Values are shown by means \pm SE for different treatments: (a) control; (b) low DOC (10 mg L⁻¹); (c) medium DOC (20 mg L⁻¹); (d) high DOC (40 mg L⁻¹).

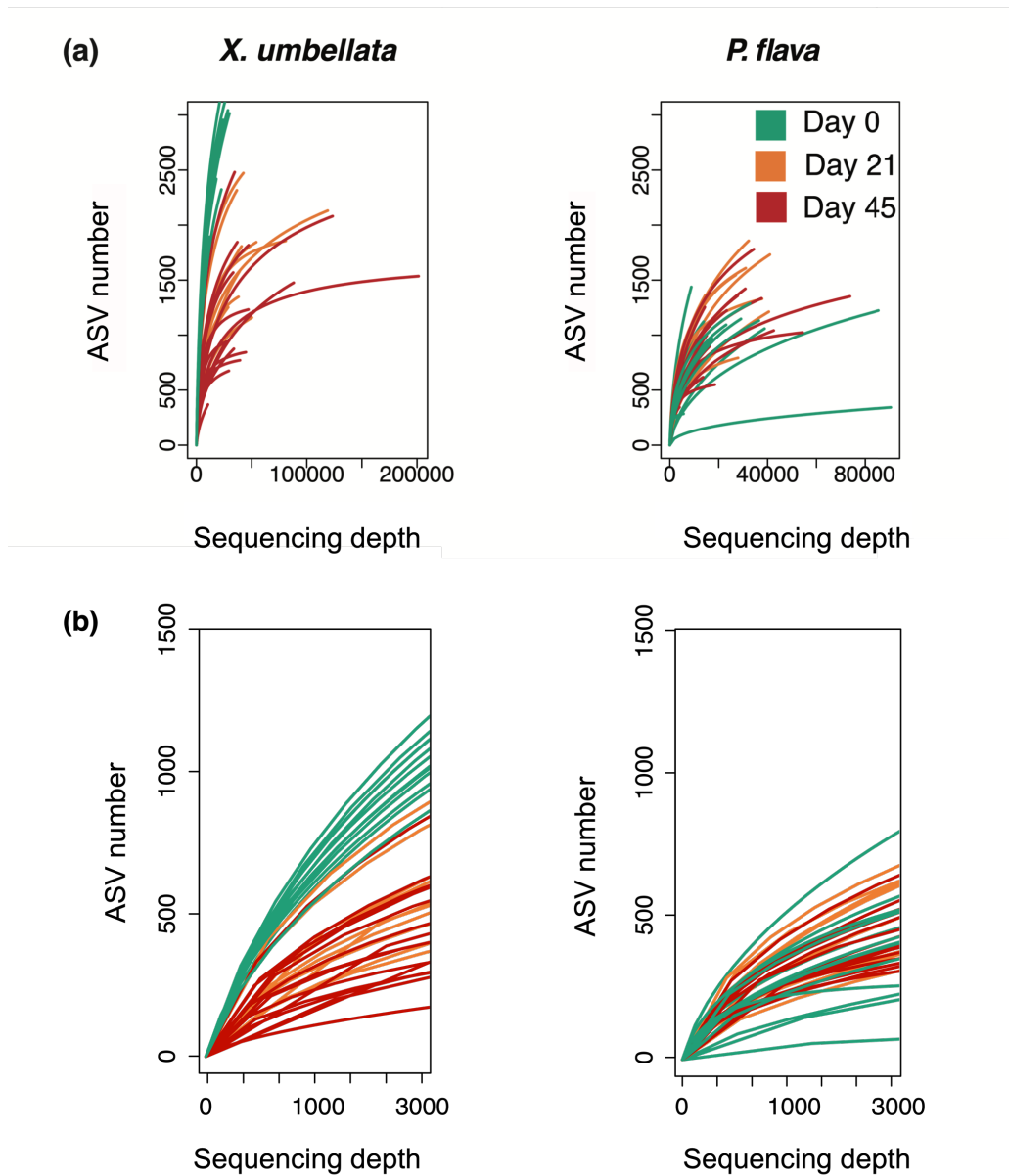


Fig. S1 Rarefaction curves of bacterial communities in corals *X. umbellata* and *P. flava*. (a) ASV numbers in *X. umbellata* with sequencing depth of 200,000 and in *P. flava* with sequencing depth of 80,000. (b) ASV numbers in corals *X. umbellata* and *P. flava* with sequencing depth of 3,000.

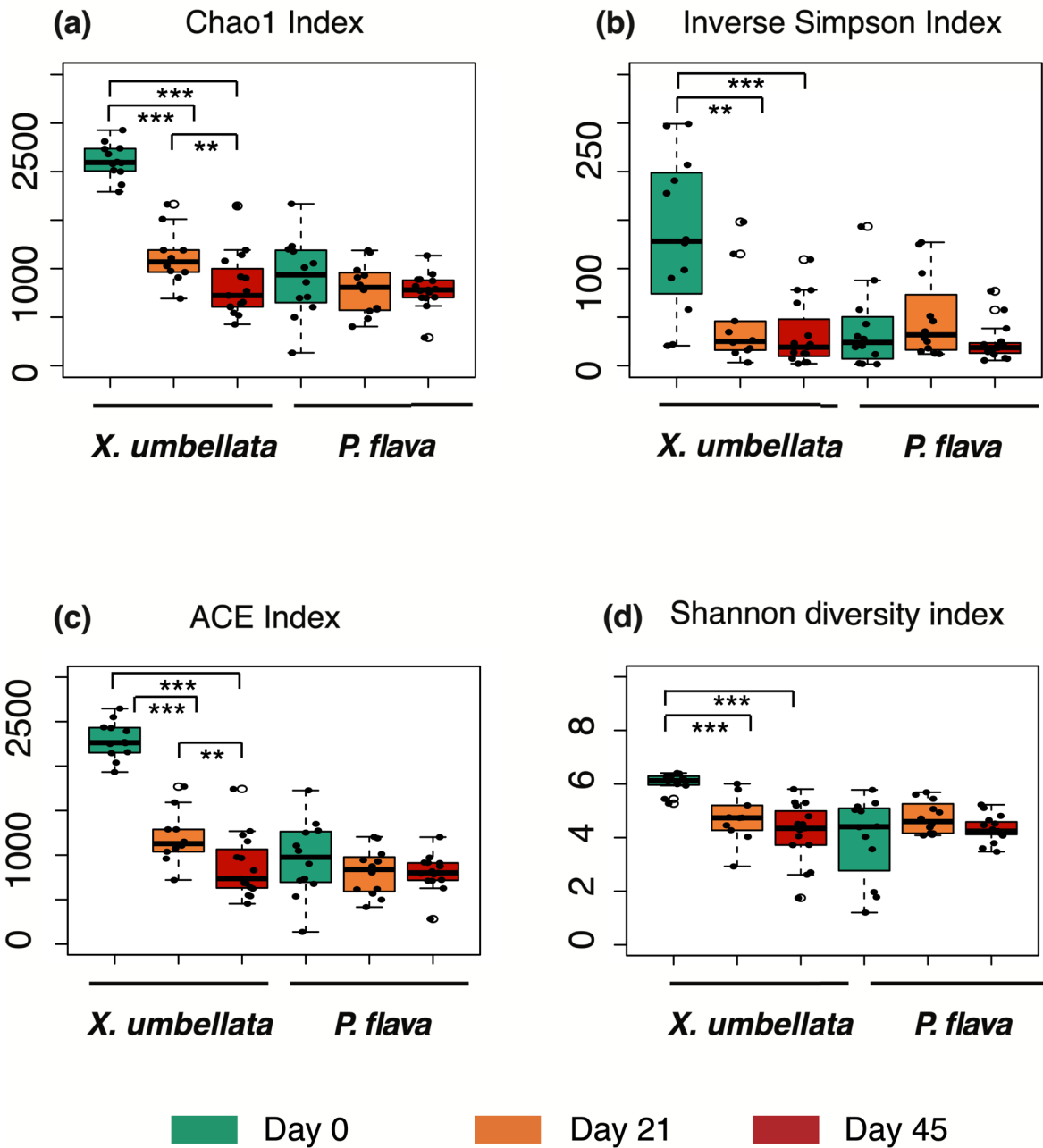


Fig. S2 Alpha diversity of bacterial communities in corals *X. umbellata* and *P. flava*. The asterisks indicate statistically significant differences compared to day 0 for each species separately (* $p < 0.05$; ** $p < 0.01$; *** $p < 0.001$). (a) Chao1 index. (b) Inverse Simpson Index. (c) ACE index. (d) Shannon diversity index.

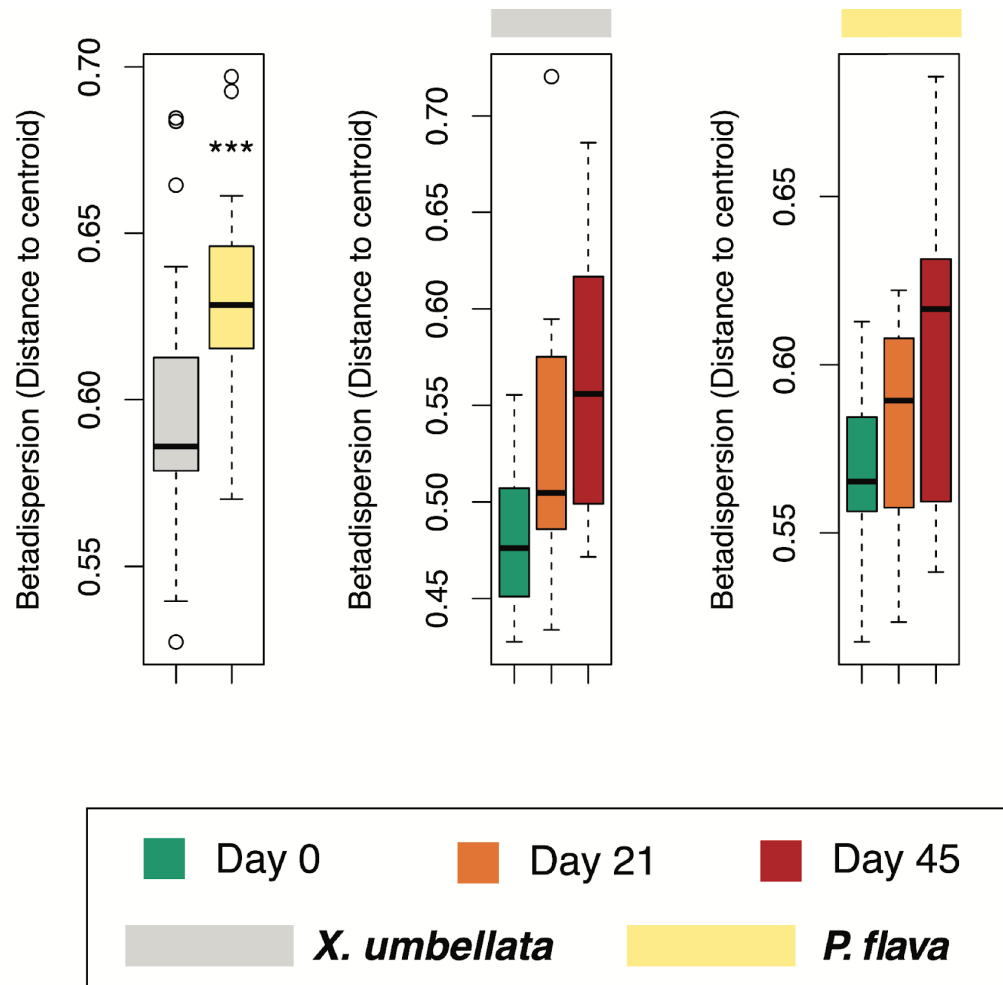


Fig. S3 Multivariate dispersion of bacterial communities in corals *X. umbellata* and *P. flava*. The asterisks indicate statistically significant differences between groups ($*p < 0.05$; $**p < 0.01$; $***p < 0.001$).

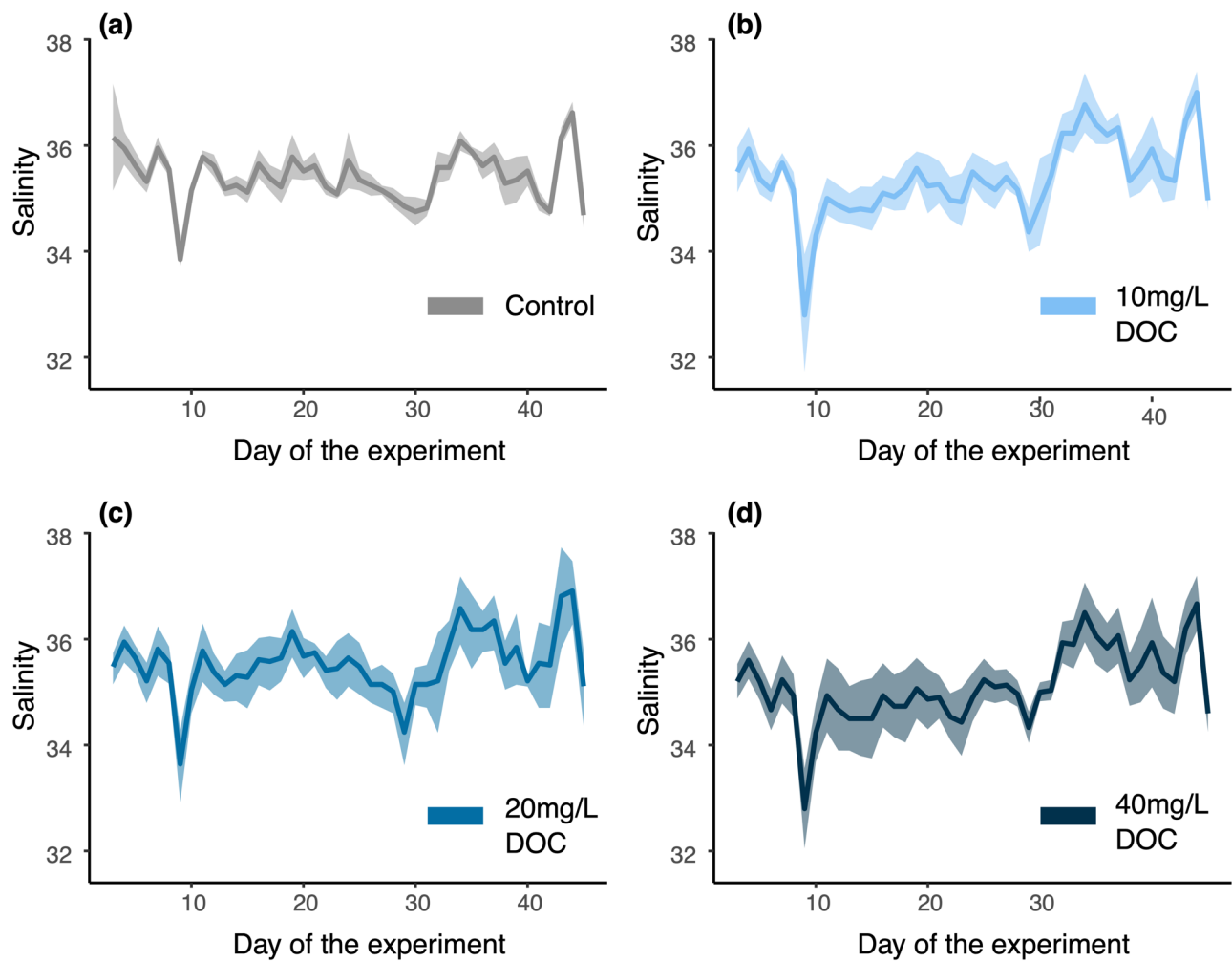


Fig. S4 The fluctuations in salinity (daily measurement) throughout the experiment. Values are shown by means \pm SE for different treatments: (a) control; (b) low DOC (10 mg L⁻¹); (c) medium DOC (20 mg L⁻¹); (d) high DOC (40 mg L⁻¹).