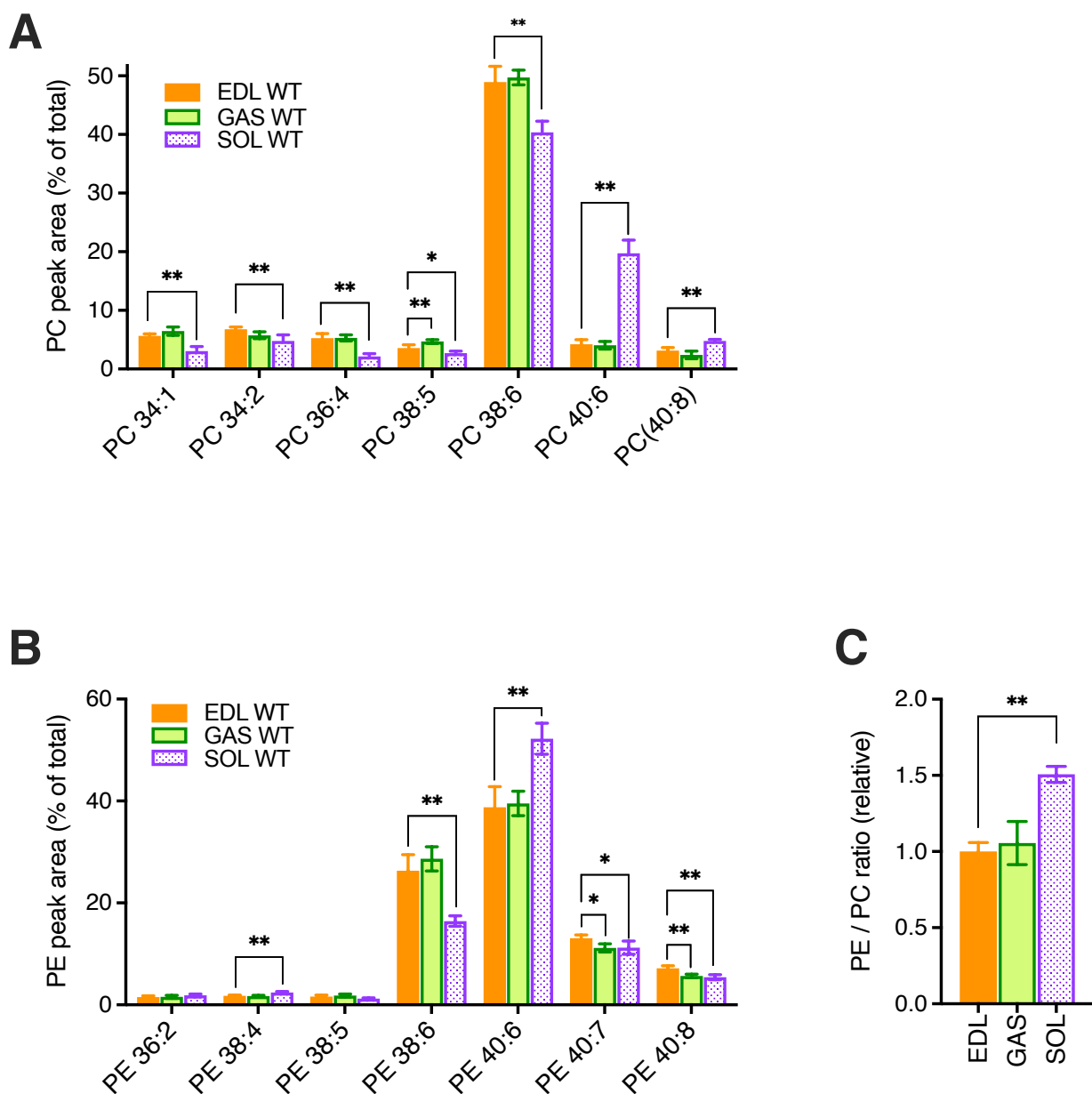


# Supplementary Figure 1



**Supplementary Figure 1.** PC and PE profiles in EDL, GAS, and SOL skeletal muscles of adult (18-week-old) WT-B10 mice raised on CE-2 standard chow. PC (A) and PE (B) were measured by LC-MS/MS. EDL was selected as a standard muscle to determine the statistical variations. (C) Relative ratios of total detected amounts of PE to PC were also determined (ratio in EDL = 1). PC and PE peak values are expressed as the percentage of total PC or PE signals, and means  $\pm$  SD are plotted. Statistical significance of variations versus EDL is based on Dunnett's multiple comparison tests. \* $p < 0.05$ , \*\* $p < 0.01$ ;  $n=5$  mice/group.