

Supplemental Table and Figures:

Supplemental Table 1. Association of concordant and discordant performance-based functional assessments and outcomes

	<u>Discordant</u>			<u>Concordant</u>		
	SPPB High M3SE Low	SPPB Low M3SE High	p-value	SPPB High M3SE High	SPPB Low M3SE Low	p-value
Participants n (% of 350)	81 (23.1)	61 (17.4)	--	116 (33.1)	92 (26.3)	--
ESKD n (% of group)	7 (8.6)	8 (13.1)	0.417	13 (11.2)	13 (14.1)	0.554
Death	9 (11.1)	9 (14.8)	0.546	11 (9.5)	27 (29.3)**	0.0009
ESKD or 50% reduction GFR	8 (9.8)	13 (21.3)	0.794	13 (11.2)	18 (19.6)	0.121
ESKD, 50% reduction GFR, or death	17 (21.0)	21 (34.4)	0.125	24 (20.7)	44 (47.8)**	0.0007
	<u>IADL High M3SE Low</u>	<u>IADL Low M3SE High</u>	<u>p-value</u>	<u>IADL High M3SE High</u>	<u>IADL Low M3SE Low</u>	<u>p-value</u>
Participants n (% of 350)	106 (30.3)	37 (10.6)	--	140 (40.0)	67 (19.1)	--
ESKD n (% of group)	14 (13.2)	3 (8.1)	0.439	18 (12.9)	6 (9.0)	0.441
Death	16 (15.1)	4 (10.8)	0.549	16 (11.4)	20 (29.9)**	0.003
ESKD or 50% reduction GFR	19 (17.9)	3 (8.1)	0.19	23 (16.4)	7 (10.4)	0.29
ESKD, 50% reduction GFR, or death	34 (32.1)	7 (18.9)	0.198	38 (27.1)	27 (40.3)	0.114
	<u>SPPB High IADL Low</u>	<u>SPPB Low IADL High</u>	<u>p-value</u>	<u>SPPB High IADL High</u>	<u>SPPB Low IADL Low</u>	<u>p-value</u>
Participants n (% of 350)	34 (9.7)	83 (23.7)	--	163 (46.6)	70 (20.0)	--
ESKD n (% of group)	3 (8.8)	15 (18.1)	0.249	17 (10.4)	6 (8.6)	0.679
Death	4 (11.8)	16 (19.3)	0.372	16 (9.8)	20 (28.6)**	0.00084
ESKD or 50% reduction GFR	3 (8.8)	24 (28.9)*	0.04	18 (11.0)	7 (10.0)	0.824
ESKD, 50% reduction GFR, or death	7 (20.6)	38 (45.8)*	0.046	34 (20.9)	27 (38.6)*	0.0154

Note: P-values compares two groups listed side by side

* indicates significance $p \leq 0.05$

** indicates significance $p \leq 0.001$

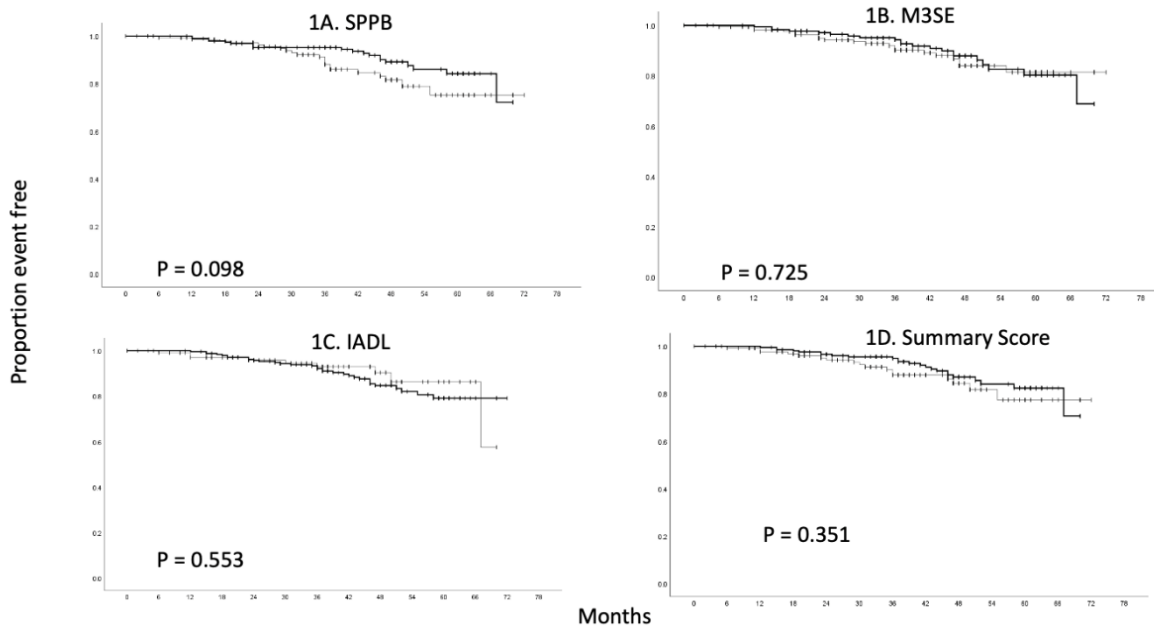
Supplemental Table 2. "Performance-based Functional Assessment Hazard Ratios accounting for competing risk of death, ESKD or 50% decline GFR"

	Death		ESKD or 50% Decline GFR	
	CPH	FG	CPH	FG
SPPB	2.43 (1.36-4.34)	2.403 (1.397 - 4.134)	1.36 (0.72 – 2.55)	1.197 (0.589 - 2.433)
M3SE	1.49 (0.80 – 2.77)	1.429 (0.809 - 2.523)	1.03 (0.55 – 1.93)	0.963 (0.510 - 1.819)
IADL	1.71 (0.97 – 2.99)	1.747 (1.028 - 2.968)	0.49 (0.24-1.00)	0.426 (0.198 – 0.918)
Summary Score	2.07 (1.16-3.69)	2.052 (1.243 - 3.387)	0.85 (0.46 – 1.59)	0.734 (0.384 - 1.405)

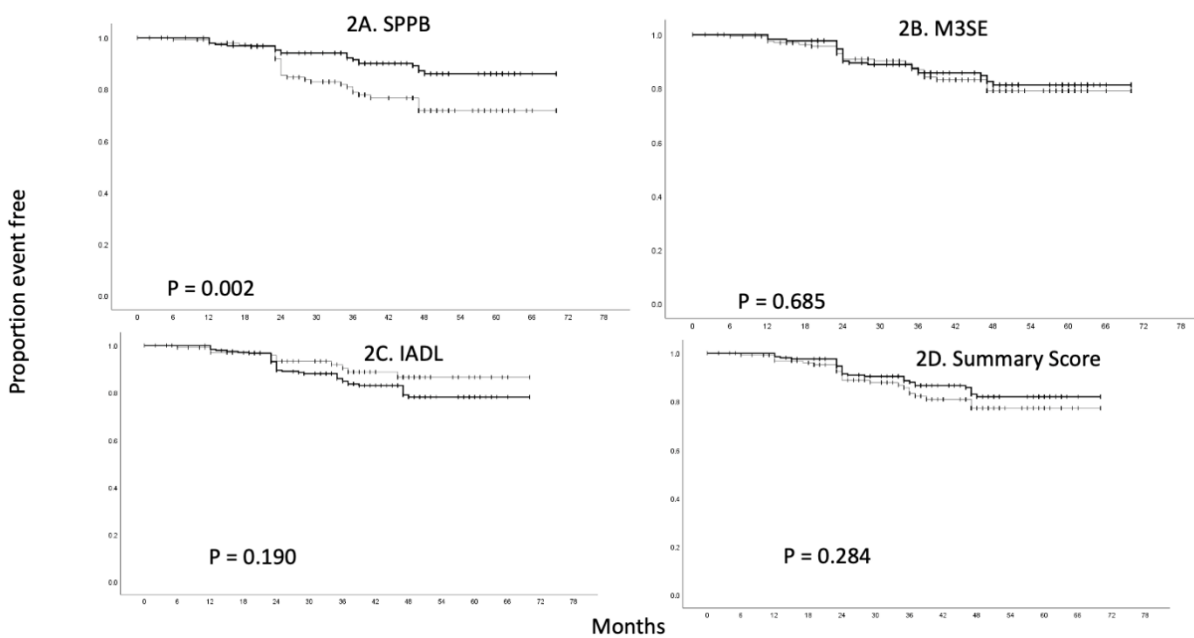
CPH = Cox Proportional Hazard

FG = Fine and Gray

Supplemental Figure 1. ESKD



Supplemental Figure 2. ESKD or 50% decline GFR



Supplemental Figure Legend

Figures 1-2: Kaplan-Meier plots of high performance (bolded line) versus low performance groups (non-bolded line) for (A) SPPB, (B) M3SE, (C) IADL, and (D) Summary Score for outcomes of (1) end-stage kidney disease; (2) 50% reduction in GFR or ESKD. Log-rank statistic p-value.