

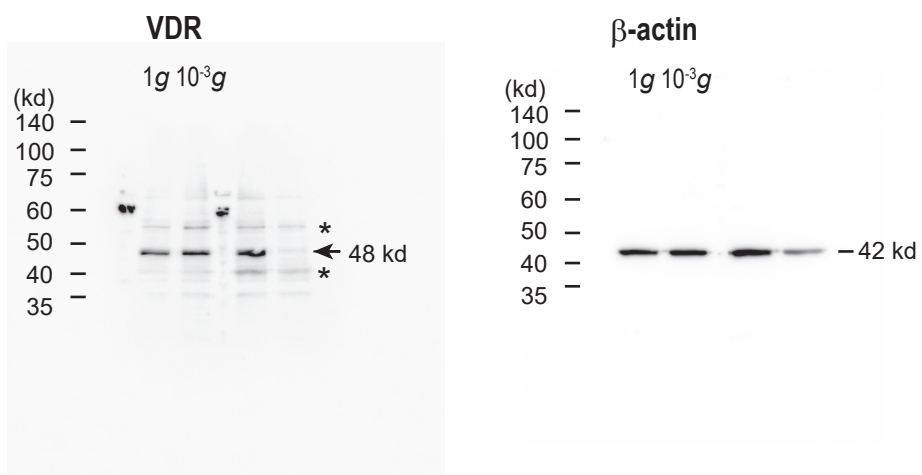
Supplementary Table

qPCR primers used in the study

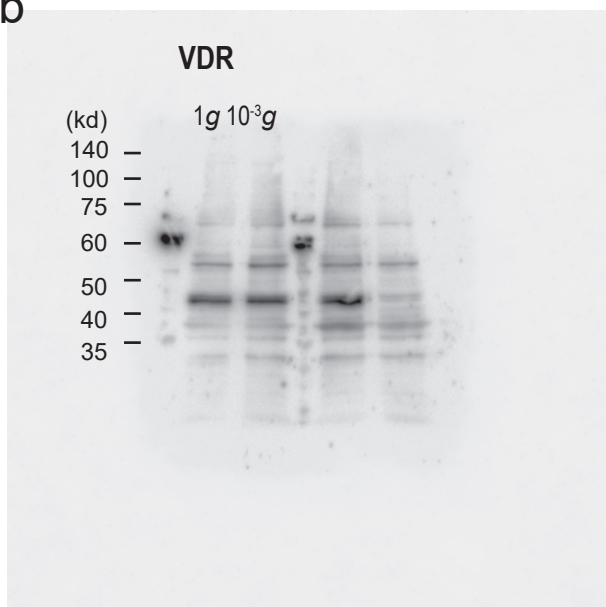
	Forward	Reverse
qPCR		
<i>Actb</i>	GGCTGTATTCCCCTCCATCG	CCAGTTGGTAACAATGCCATGT
<i>Fbxo32</i>	GAGTGGCATCGCCAAAAGA	TCTGGAGAAGTTCCCGTATAAGT
<i>Trim63</i>	GTGTGAGGTGCCTACTTGCTC	GCTCAGTCTTCTGTCCTTGGA
<i>Myog</i>	AGTGAATGCAACTCCCACAG	ACGATGGACGTAAGGGAGTG
<i>MyoD</i>	GGCTACGACACCGCCTACTA	GAGATGCGCTCCACTATGCT
<i>Myh3</i>	AAAAGGCCATCACTGACGC	CAGCTCTCTGATCCGTGTCTC
<i>Myh4</i>	GCTTGAAAACGAGGTGGAAA	CCTCCTCAGCCTGTCTCTTG
<i>Fbxo32</i> intron 4	CCTCATGGACTGAAGAGCGG	GGACAGAGTGACCTGGCAAA

The sequence of qPCR primers used in this study is listed.

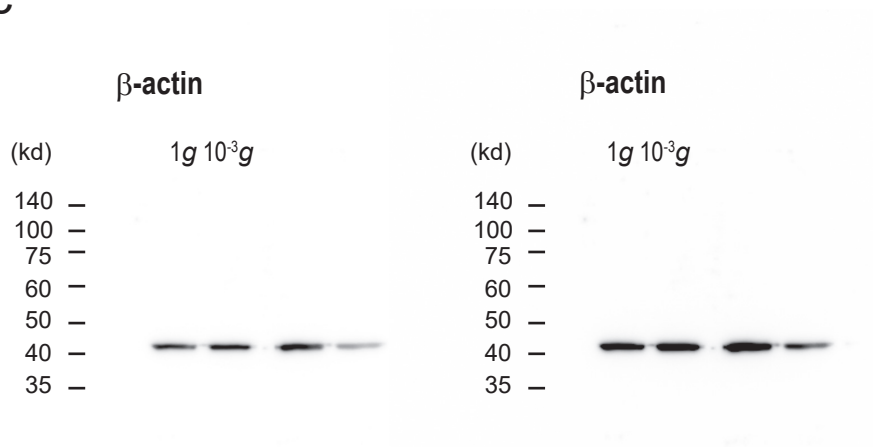
a



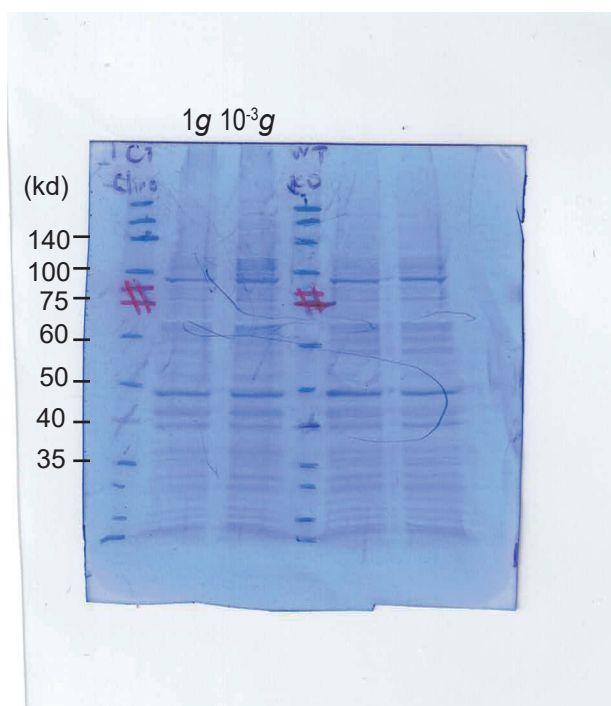
b



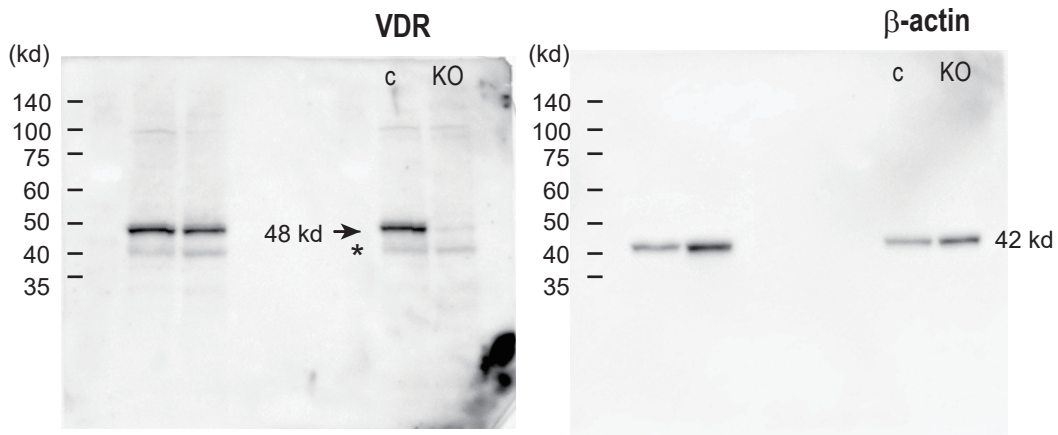
c



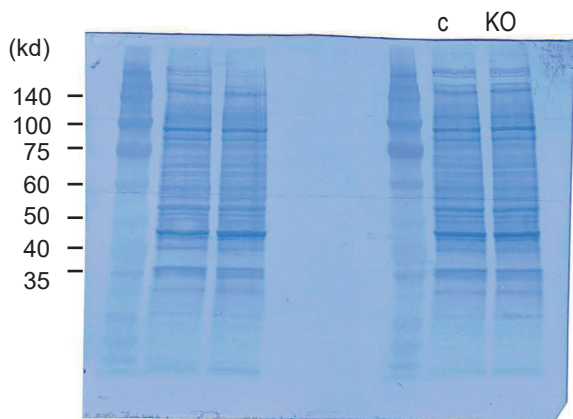
d

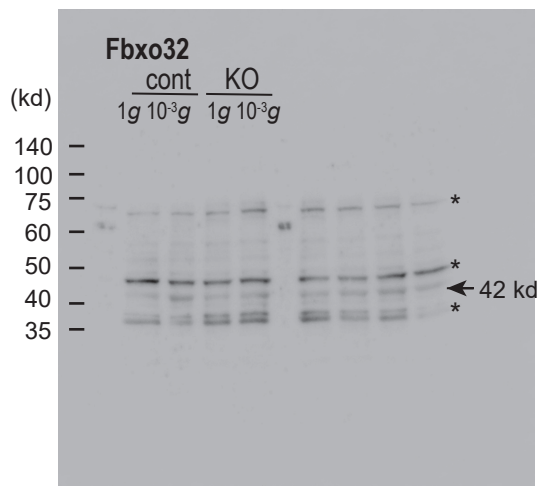
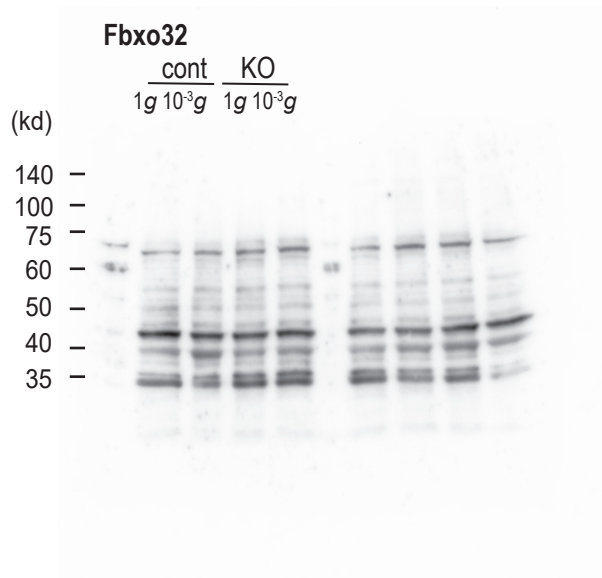
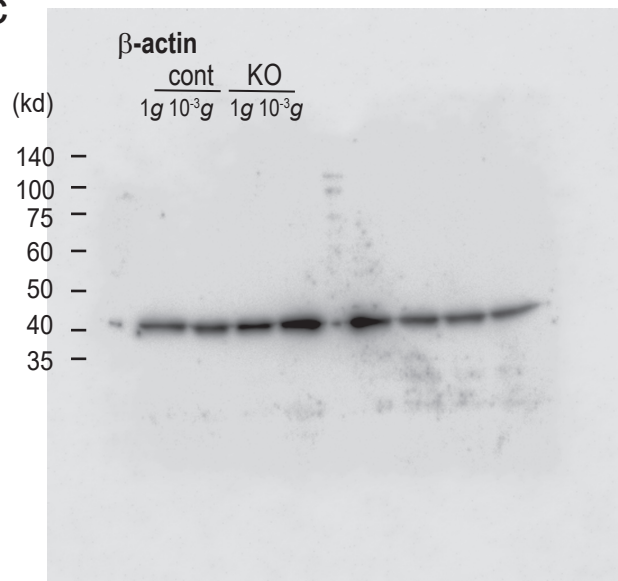
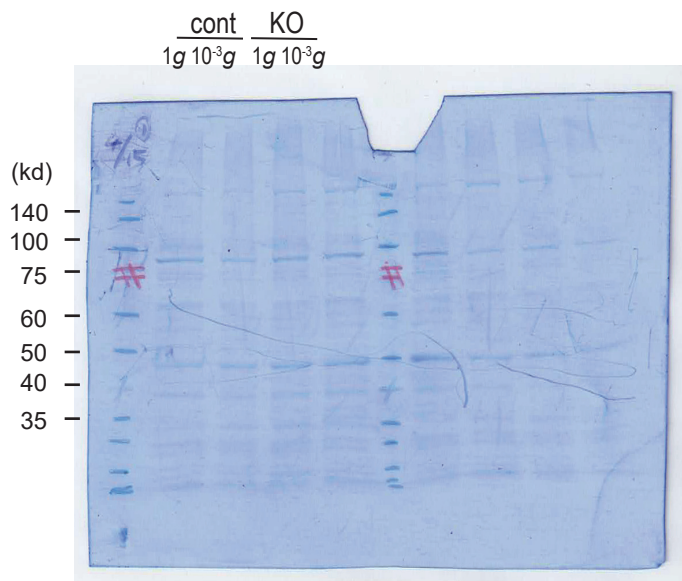


a

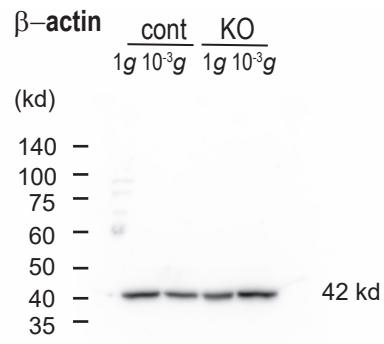
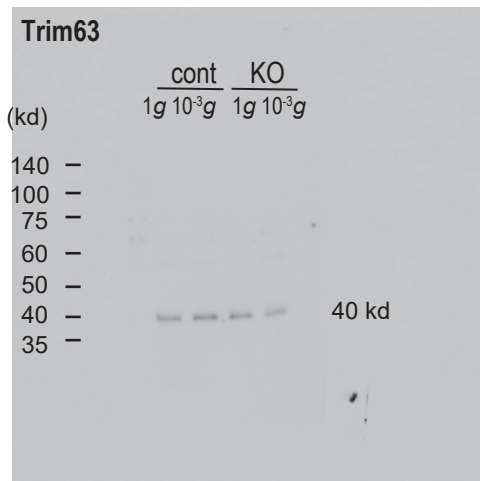


b

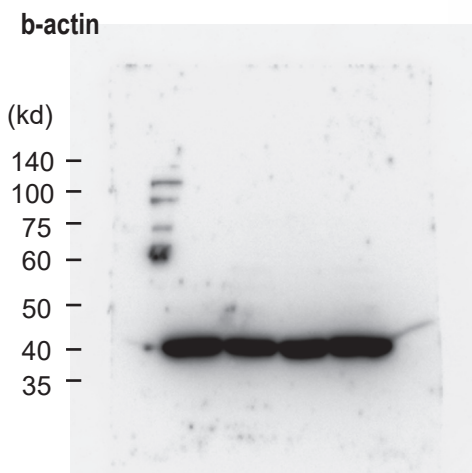


a**b****c****d**

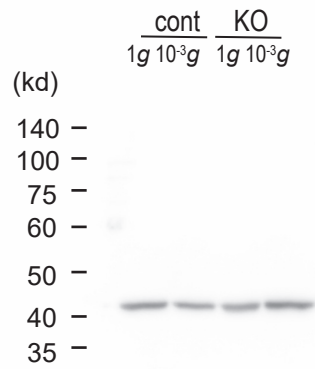
a



b



c



d

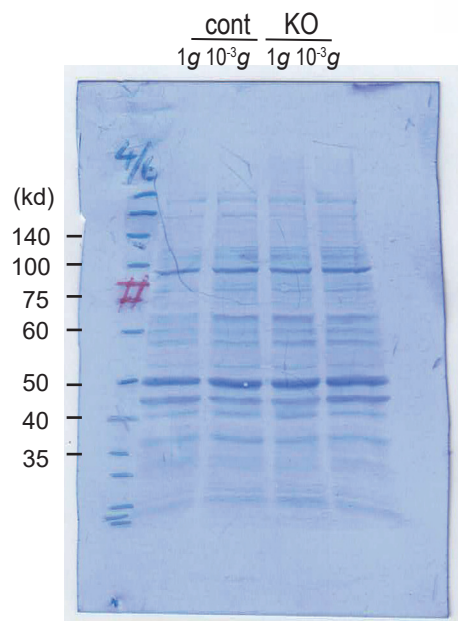


Figure legends for supplemental figures

Supplemental Figure 1

- a) Images of the original blots corresponding to Figure 2b. The membrane was trimmed prior to hybridization with the antibodies. The membrane hybridized with VDR antibody was reprobed with β -actin antibody. The arrow shows bands corresponding to VDR.
- b) An original image of VDR with a longer exposure time.
- c) Original images of β -actin with different exposure times.
- d) CBB staining of the membrane. Protein Ladder One Plus Triple-color for SDS-PAGE (Nacalai Tesque) was used as the molecular marker.

Supplemental Figure 2

- a) Images of the original blots corresponding to Figure 3b. The membrane hybridized with VDR antibody was reprobed with β -actin antibody. The arrow shows bands corresponding to VDR. *: non-specific bands.
- b) CBB staining of the membrane. Protein Ladder One Plus Triple-color for SDS-PAGE (Nacalai Tesque) was used as a molecular marker.

Supplemental Figure 3

- a) Images of the original blots correspond to Figure 4d. The membrane was trimmed prior to hybridization with antibodies. The arrow shows bands corresponding to Fbxo32. *: non-specific bands.
- b) An original image of Fbxo32 with a longer exposure time.
- c) An image of β -actin with a longer exposure time. The membrane hybridized with Fbxo32 antibody was reprobed with β -actin antibody.
- d) CBB staining of the membrane probed for Fbxo32 and β -actin. Protein Ladder One Plus, Triple-color for SDS-PAGE (Nacalai Tesque) was used as a molecular marker.

Supplemental Figure 4

- a) Images of the original blots correspond to Figure 4d. The membrane was trimmed prior to hybridization with antibodies. The membrane hybridized with Trim63 antibody was reprobed with β -actin antibody.
- b) An original image of β -actin with a longer exposure time.
- c) An original image of β -actin with a shorter exposure time.
- d) CBB staining of the membrane probed for Trim63 and β -actin. Protein Ladder One

Plus Triple-color for SDS-PAGE (Nacalai Tesque) was used as a molecular marker.