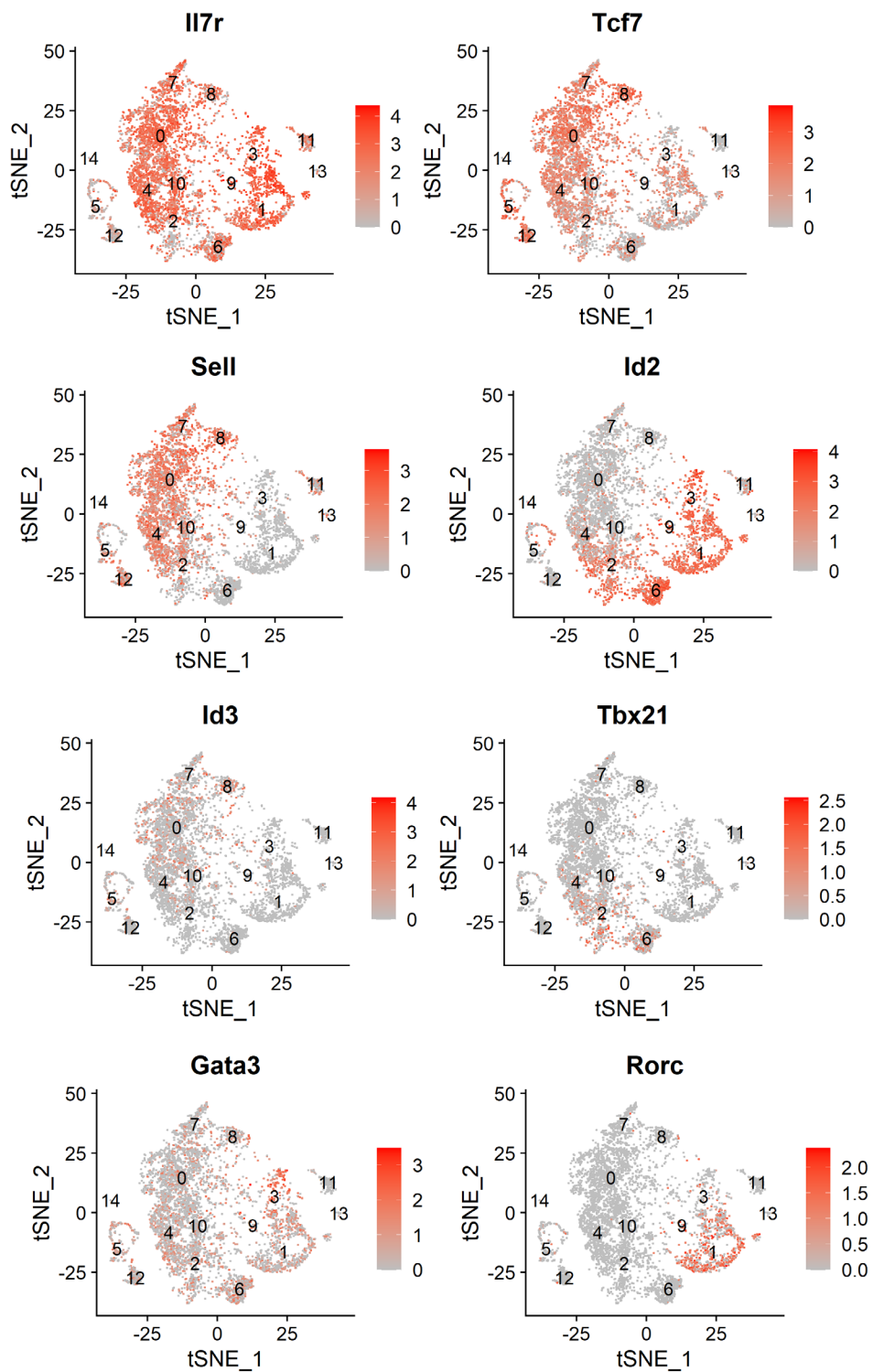


**iScience, Volume 25**

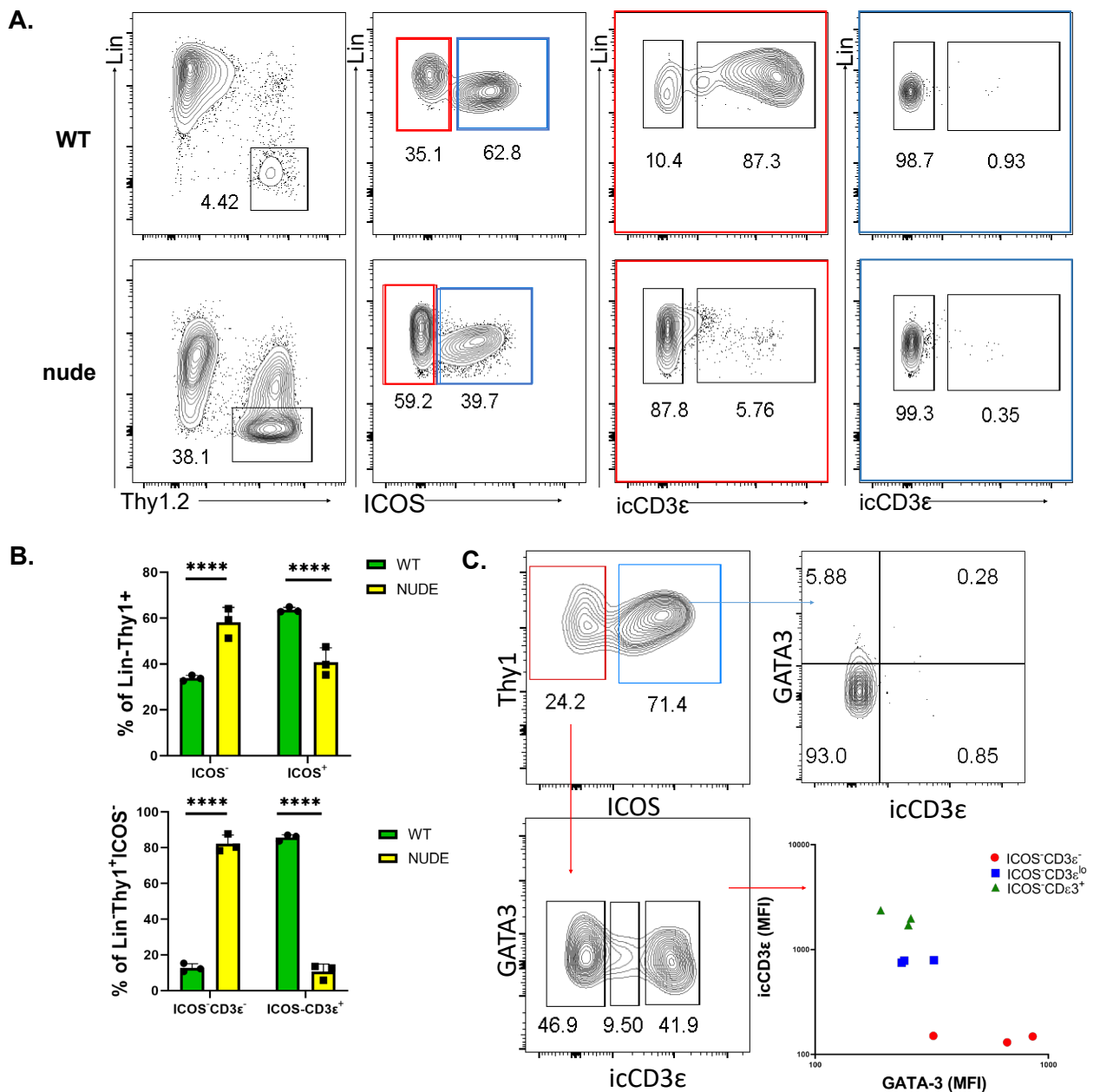
**Supplemental information**

**Correlation between circulating innate  
lymphoid cell precursors and thymic function**

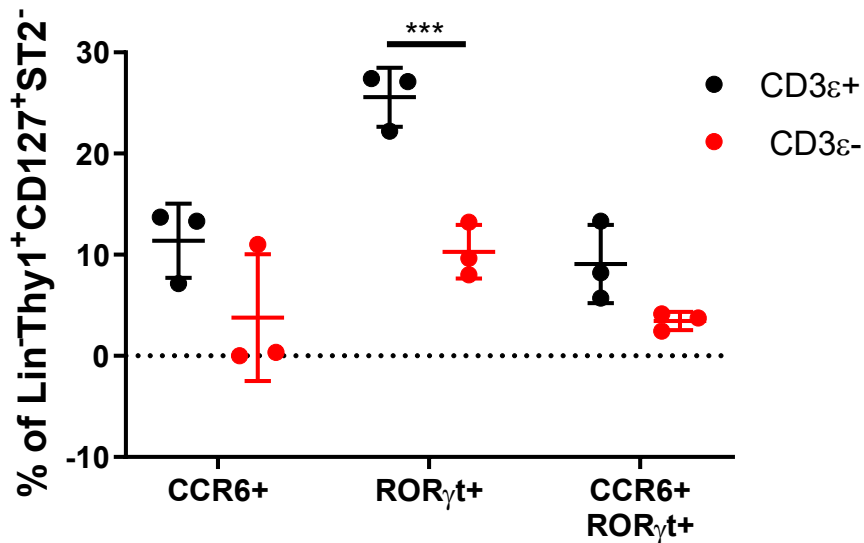
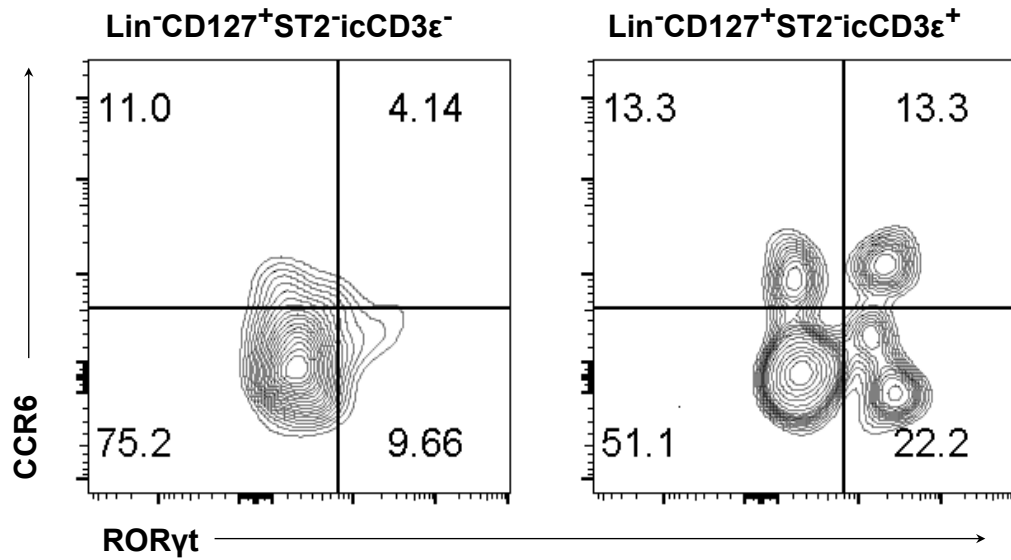
**Sandra Bajana, Aneta Pankow, Kaili Liu, Martyna Michniowska, Joseph F. Urban Jr., Wei R. Chen, and Xiao-Hong Sun**



**Supplementary Figure 1. Expression of individual genes, related to Figure 1.**  
 Feature plots showing the expression of selected genes.



**Supplementary Figure 2. Analyses of thymus-dependent ILC2s in the epidermis, related to Figure 3.** (A) Epidermis from the back of WT and Nude mice were isolated and CD45<sup>+</sup>Lin<sup>-</sup> cells were gated for the analyses shown. Subsequent analyses of Thy1<sup>+</sup>ICOS<sup>+</sup> and ICOS<sup>-</sup> cells are color coded. Numbers show the percentages of gated cells. (B) Frequencies of indicated subsets. Data shown are representative of two independent experiments. Unpaired Student's test was used for determining the statistical significance. \*\*\*\* $p < 0.0001$ . (C) GATA3 expression in WT CD45<sup>+</sup>Lin<sup>-</sup> cells. Correlations between levels of GATA3 and icCD3 $\epsilon$  are plotted.



**Supplementary Figure 3. Analyses of CCR6 expression in lung ILCs, related to Figure 5.** The Lin<sup>-</sup>Thy1<sup>-</sup>CD127<sup>+</sup>ST2<sup>-</sup>icCD3 $\epsilon$ <sup>-</sup> and icCD3 $\epsilon$ <sup>+</sup> compartments of the WT lung were analyzed for CCR6 and ROR $\gamma$ t expression, respectively. Average frequencies of indicated subsets of cells are shown below the plots. Error bars show SD. One-way ANOVA was used for determining the statistical significance. \*\*\*p<0.001.