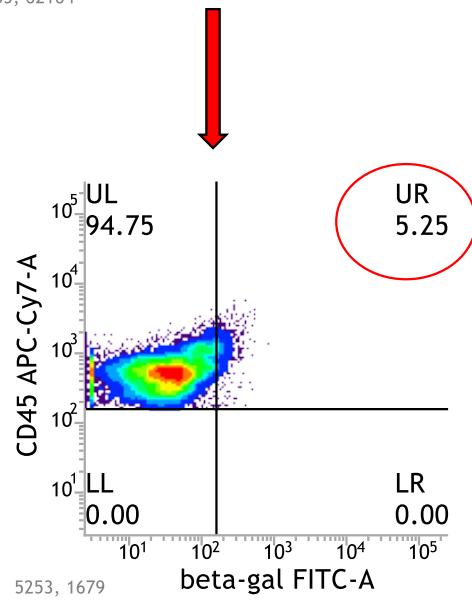
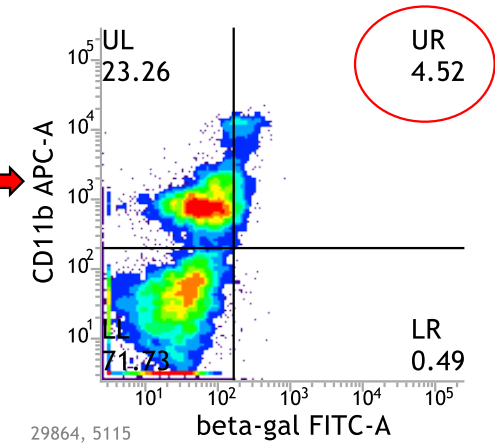
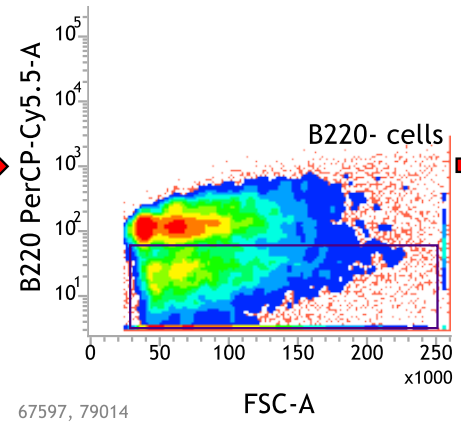
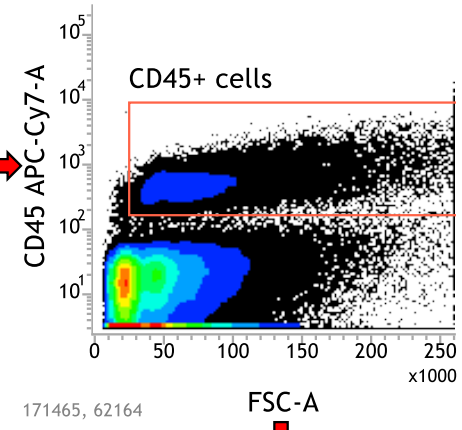
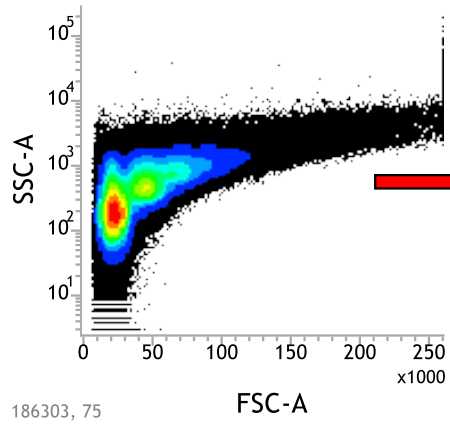


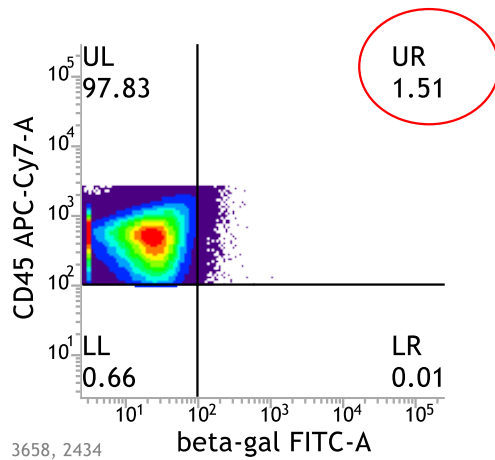
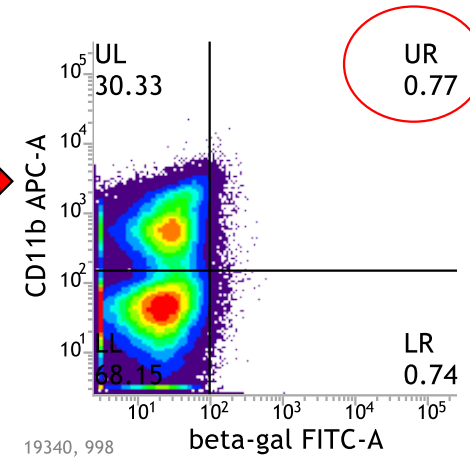
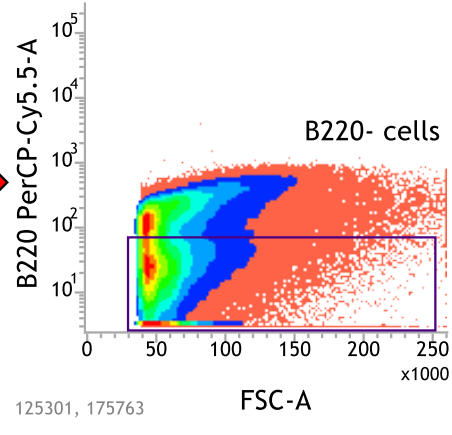
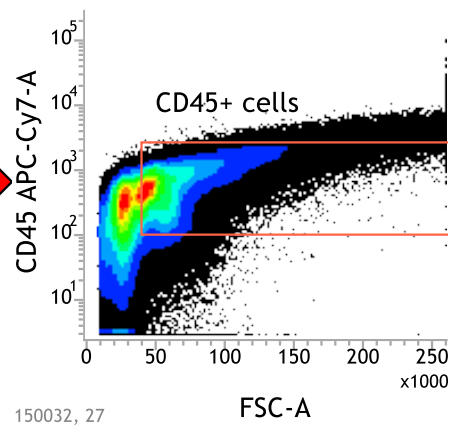
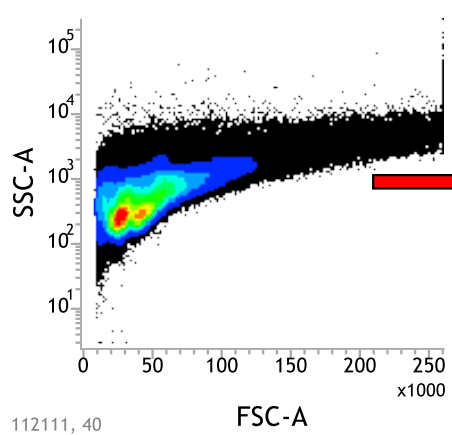
“Transfer of the Longevity associated variant of BPIFB4 gene rejuvenates immune system and vasculature by a reduction of CD38+macrophages and NAD+ decline”

GATING STRATEGY

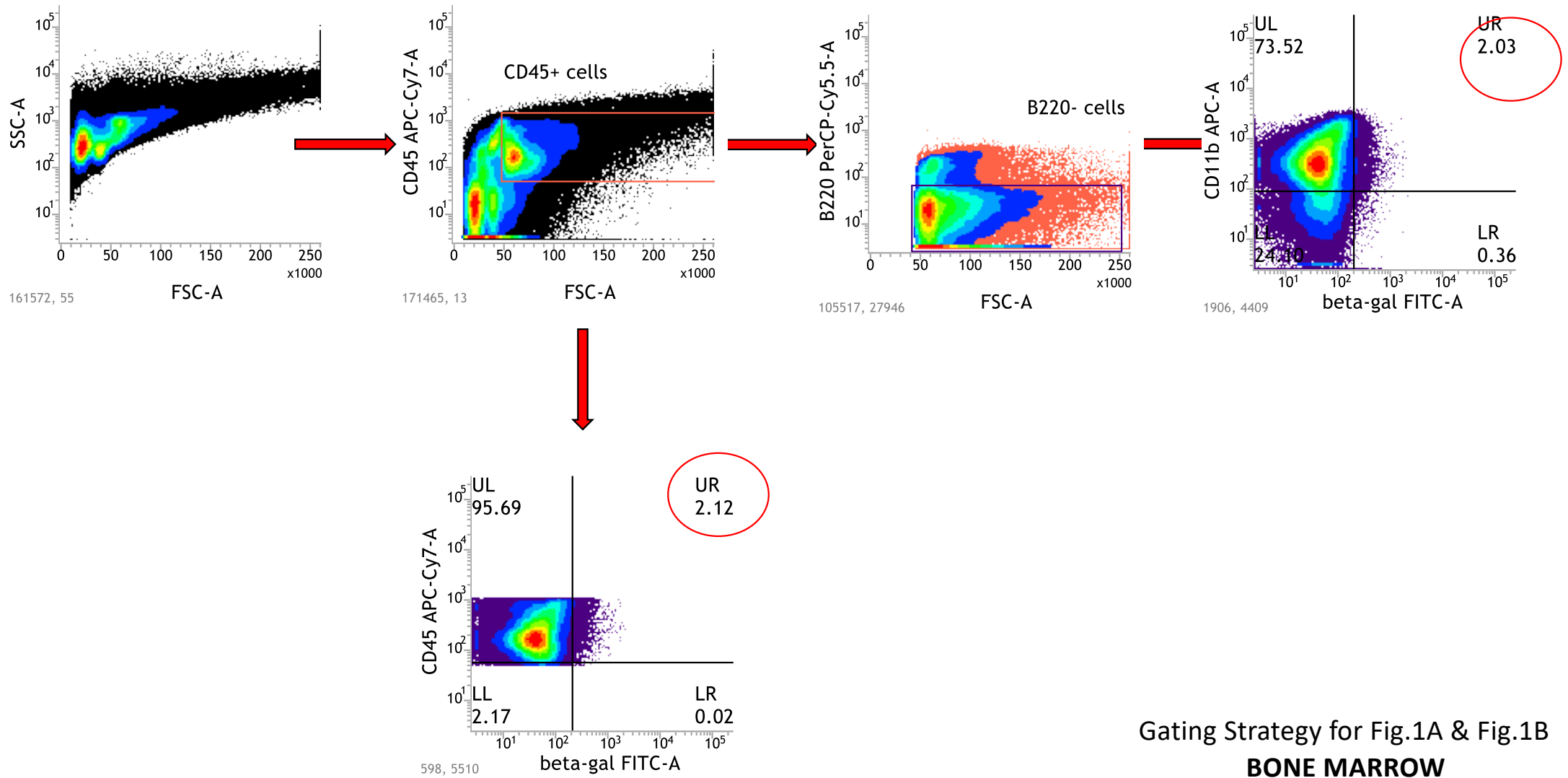


Gating Strategy for Fig.1A & Fig.1B

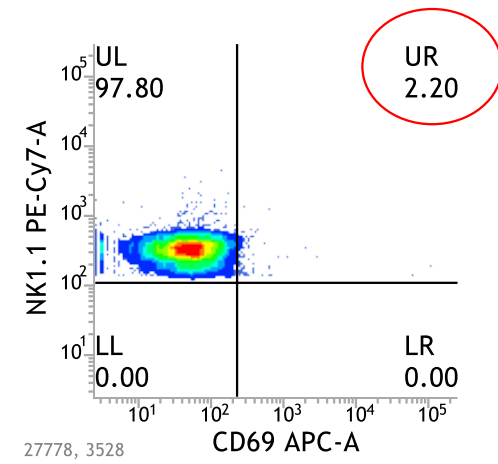
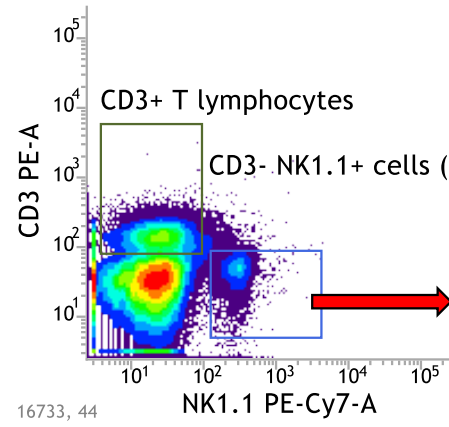
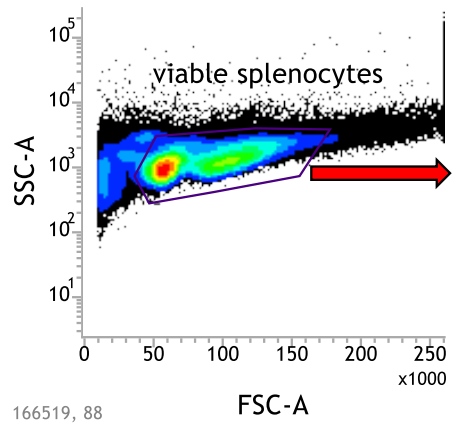
BLOOD



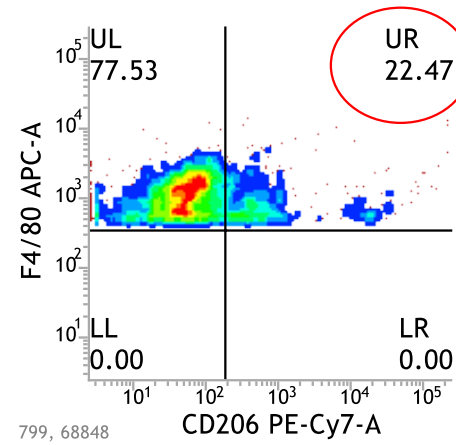
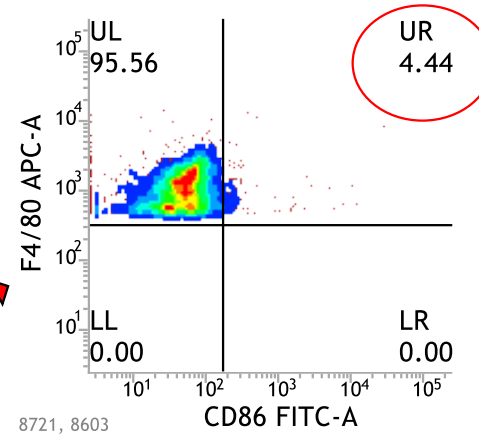
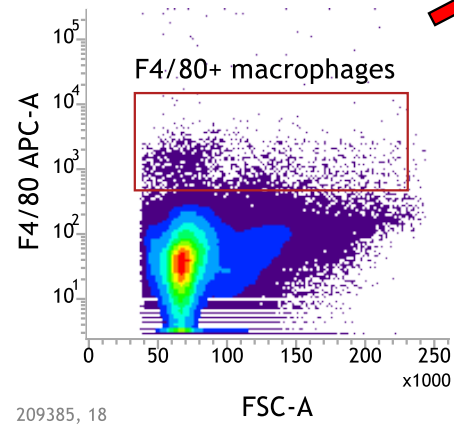
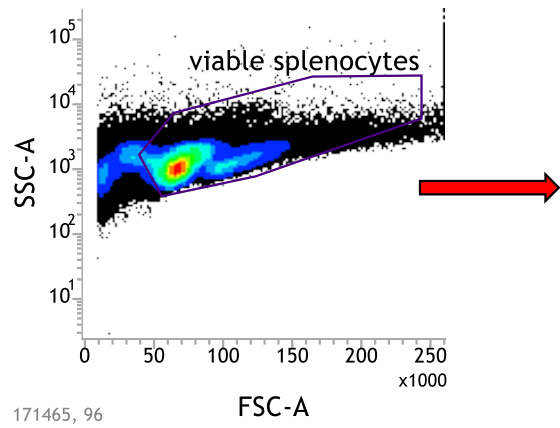
Gating Strategy for Fig.1A & Fig.1B
SPLEEN



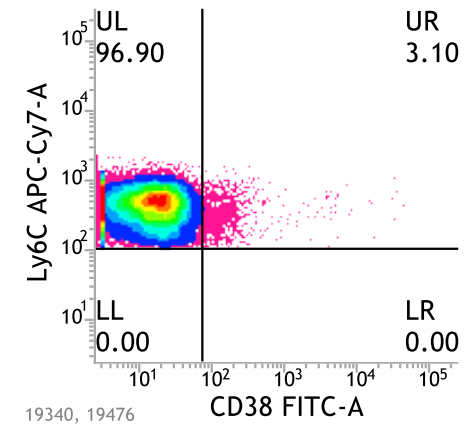
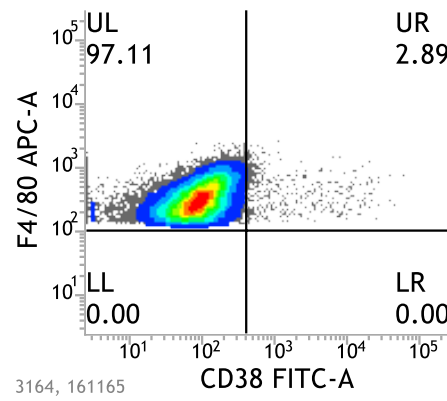
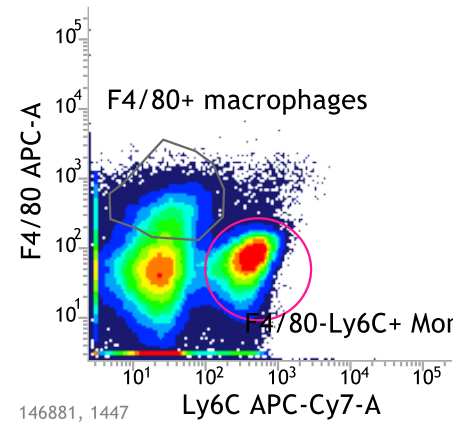
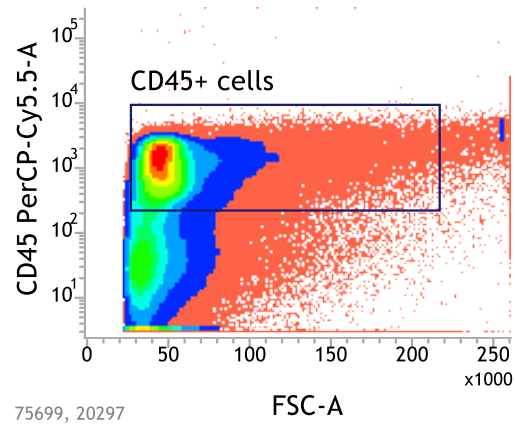
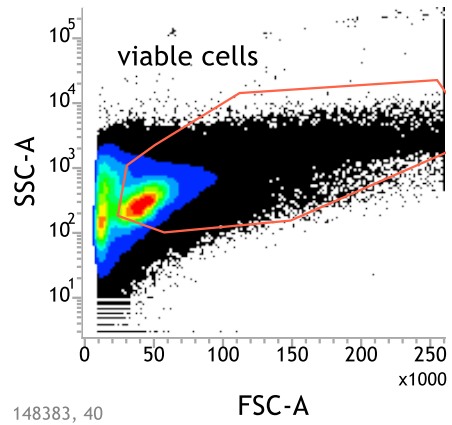
Gating Strategy for Fig.1A & Fig.1B
BONE MARROW



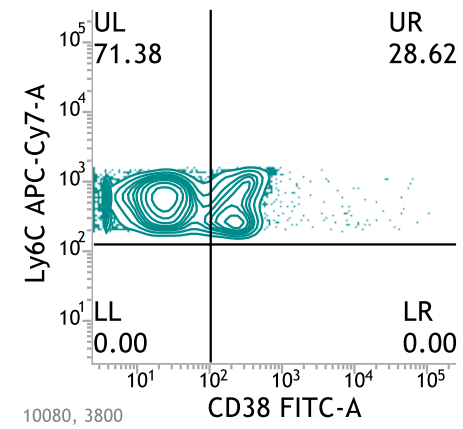
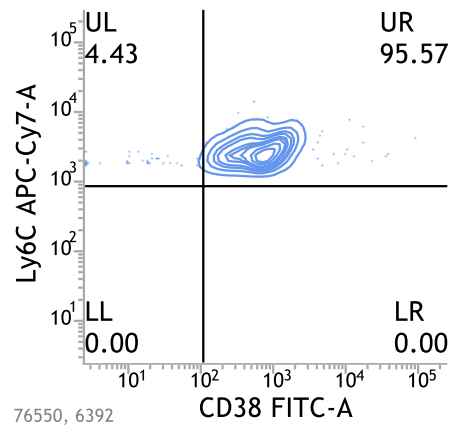
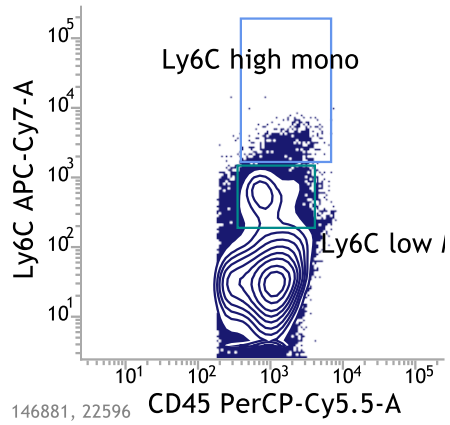
Gating Strategy for Fig.3A
SPLEEN



Gating Strategy for Fig.3B
SPLEEN



Gating Strategy for Fig.3D-E
SPLEEN



Gating Strategy for Fig.3F
SPLEEN