

Supplemental Online Content

Skarha J, Gordon L, Sakib N, et al. Association of power outage with mortality and hospitalizations among Florida nursing home residents after Hurricane Irma. *JAMA Health Forum*. 2021;2(11):e213900. doi:10.1001/jamahealthforum.2021.3900

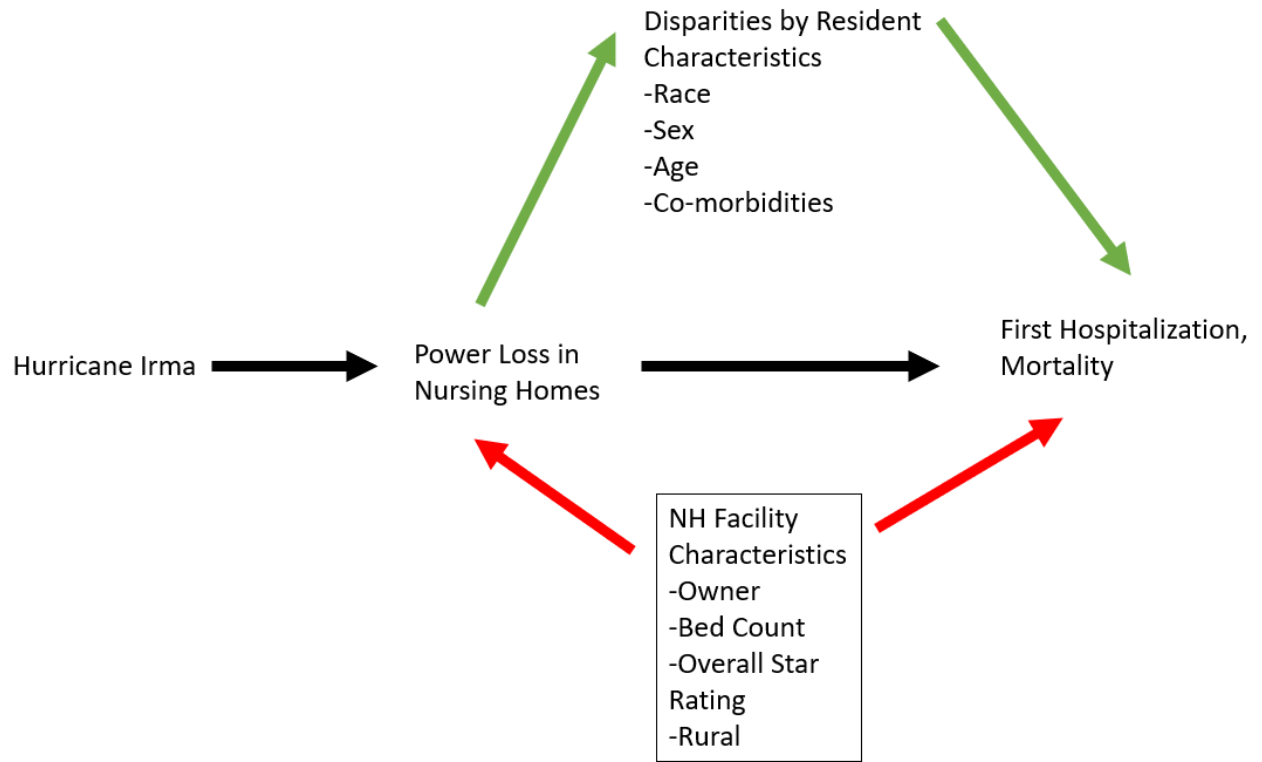
eFigure 1. Direct Acyclic Graph (DAG) for the relations between power loss, first hospitalization and mortality, and covariates

eFigure 2. Daily mortality rate of NH residents that experienced a power loss and daily mortality rate of NH residents that did not experience power loss over a 7-day period

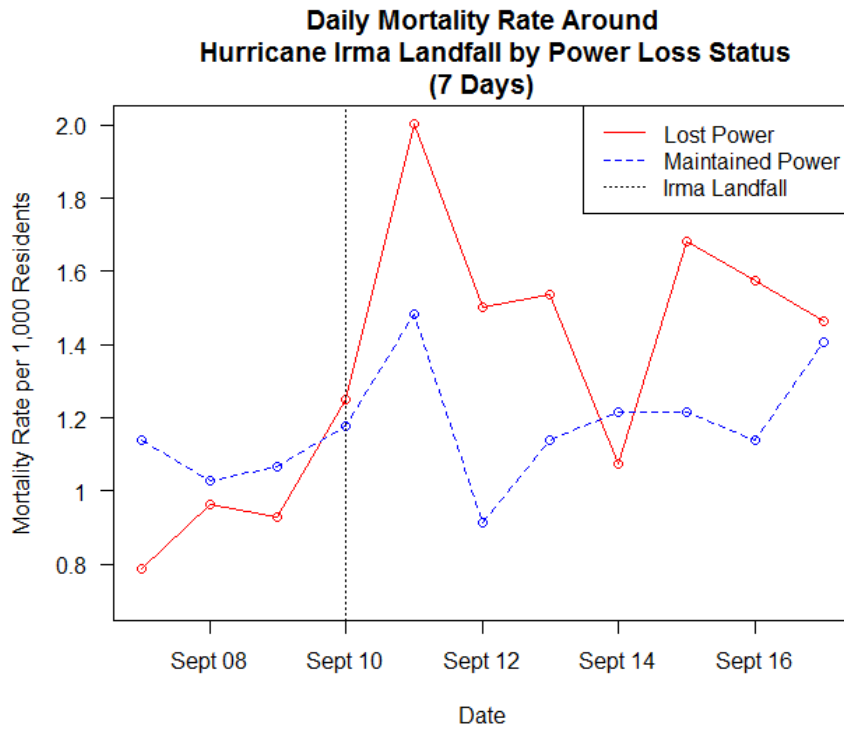
eTable. Unadjusted and adjusted odds ratio from mixed effects model of first hospitalization within 30 days or mortality within 7 and 30 days among NH residents that experienced a power loss after Hurricane Irma compared to residents that did not experience a power loss

This supplemental material has been provided by the authors to give readers additional information about their work.

eFigure 1: Direct Acyclic Graph (DAG) for the relations between power loss, first hospitalization and mortality, and covariates



eFigure 2: Daily mortality rate of NH residents comparing those that experienced a power loss and those that did not over a 7-day period



eTable: Unadjusted and adjusted odds ratio from mixed effects model of first hospitalization within 30 days or mortality within 7 and 30 days among NH residents that experienced a power loss after Hurricane Irma compared to residents that did not experience a power loss^{a,b}

	Unadjusted Odds Ratio 95% CI	Adjusted Odds Ratio 95% CI
First Hospitalization within 30 days	1.03 (0.94, 1.12)	1.05 (0.96, 1.14)
Mortality within 7 days	1.24 (1.05, 1.47)	1.24 (1.05, 1.47)
Mortality within 30 days	1.09 (1.00, 1.21)	1.12 (1.02, 1.23)

^aWe used penalized quasilikelihood (PQL) Estimation of Generalized Linear Mixed Models with a random effect for nursing home ID.

^bWe adjusted for nursing home owner status (For-profit, Not-for-profit, Government-run), continuous bed count of nursing home beds, overall nursing home star rating (1-5), and rural county indicator.