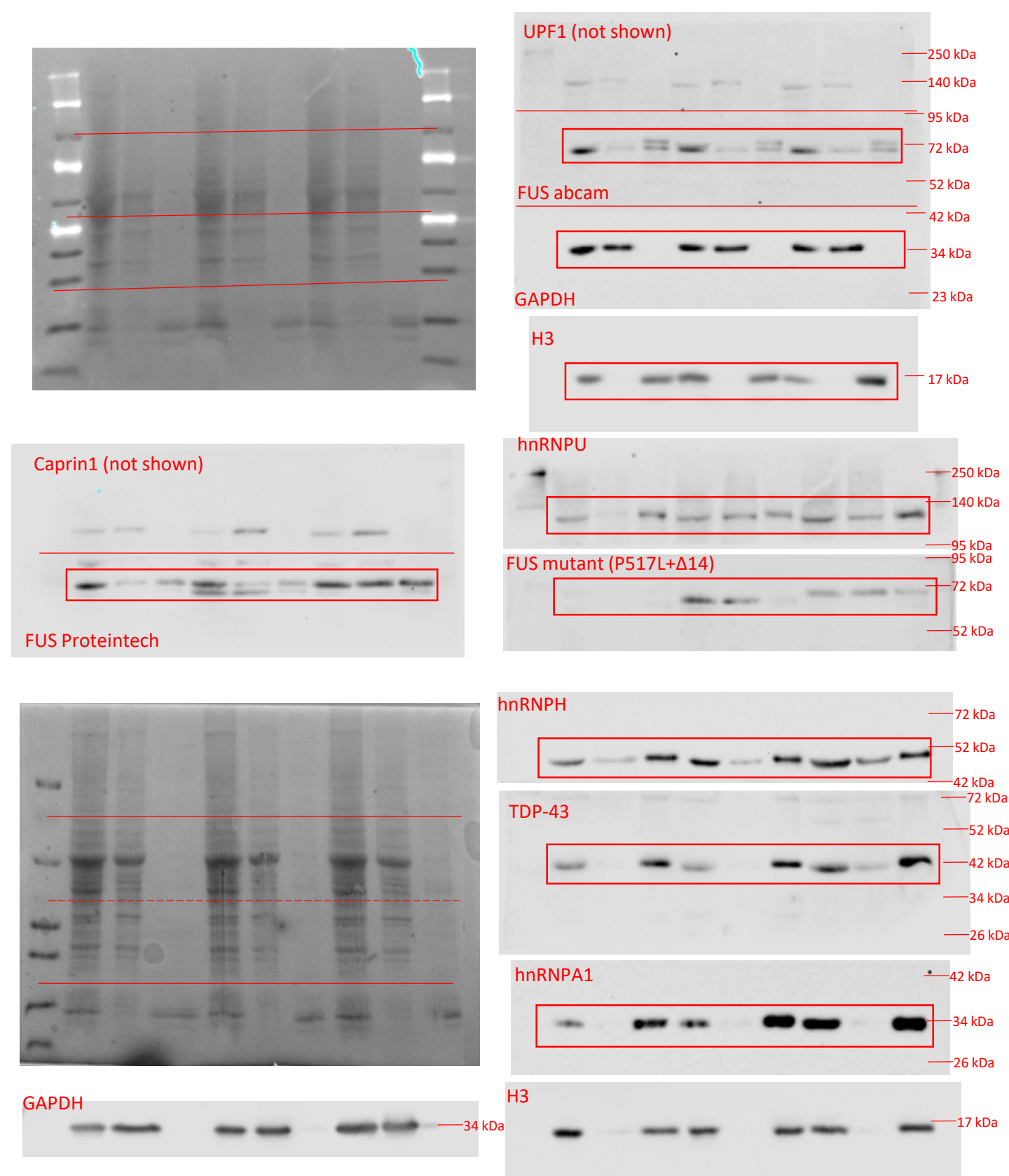


Figure 1g.



Ponceau and uncropped WB images used for figure 1g. Two membranes with identical sample loading were used to generate the display image. Total, cytoplasmic, and nuclear fractions were loaded side by side for the following genotypes: WT (lanes 1-3),  $\Delta 14$ /WT (lanes 4-6) and P517L/WT (lanes 7-9). The membranes were cut and probed with antibodies according to indications in the figure. Dashed line indicates cutting the membrane after the first probing with TDP43 antibodies for subsequent re-probing with hnRNPH, hnRNPA1, and GAPDH antibodies.