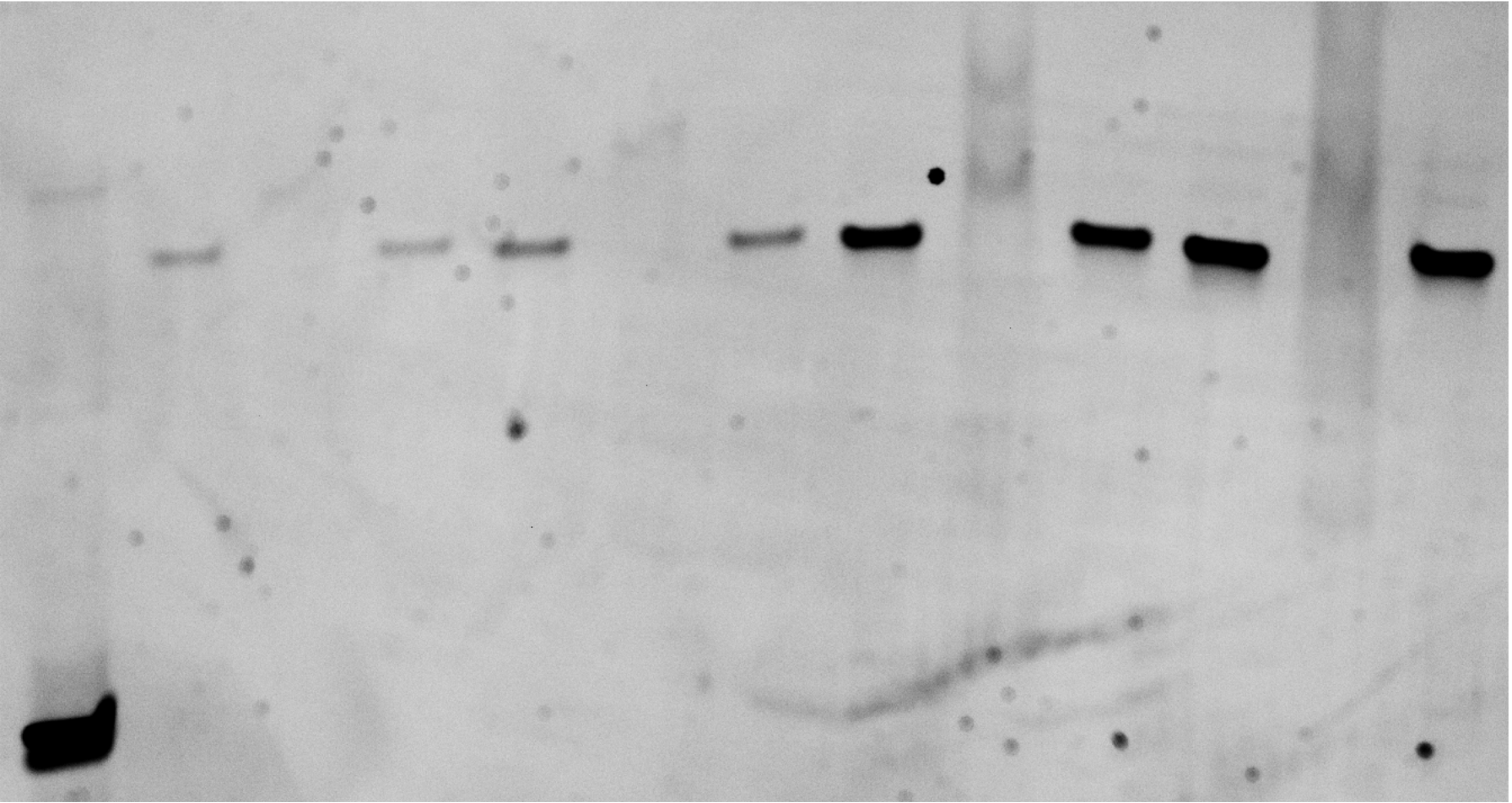


$\alpha$ Syn or pSyn  
(57  $\mu$ M):

no prot.  $\alpha$ Syn pSyn no prot.  $\alpha$ Syn pSyn no prot.  $\alpha$ Syn pSyn no prot.  $\alpha$ Syn pSyn

1517bp



DNA	0.5		1		5		10	
mass (ng):	0.5	0.5	1	1	5	5	10	10
conc. (nM):	0.1	0.1	0.2	0.2	1	1	2	2