

Supplemental Figure 1

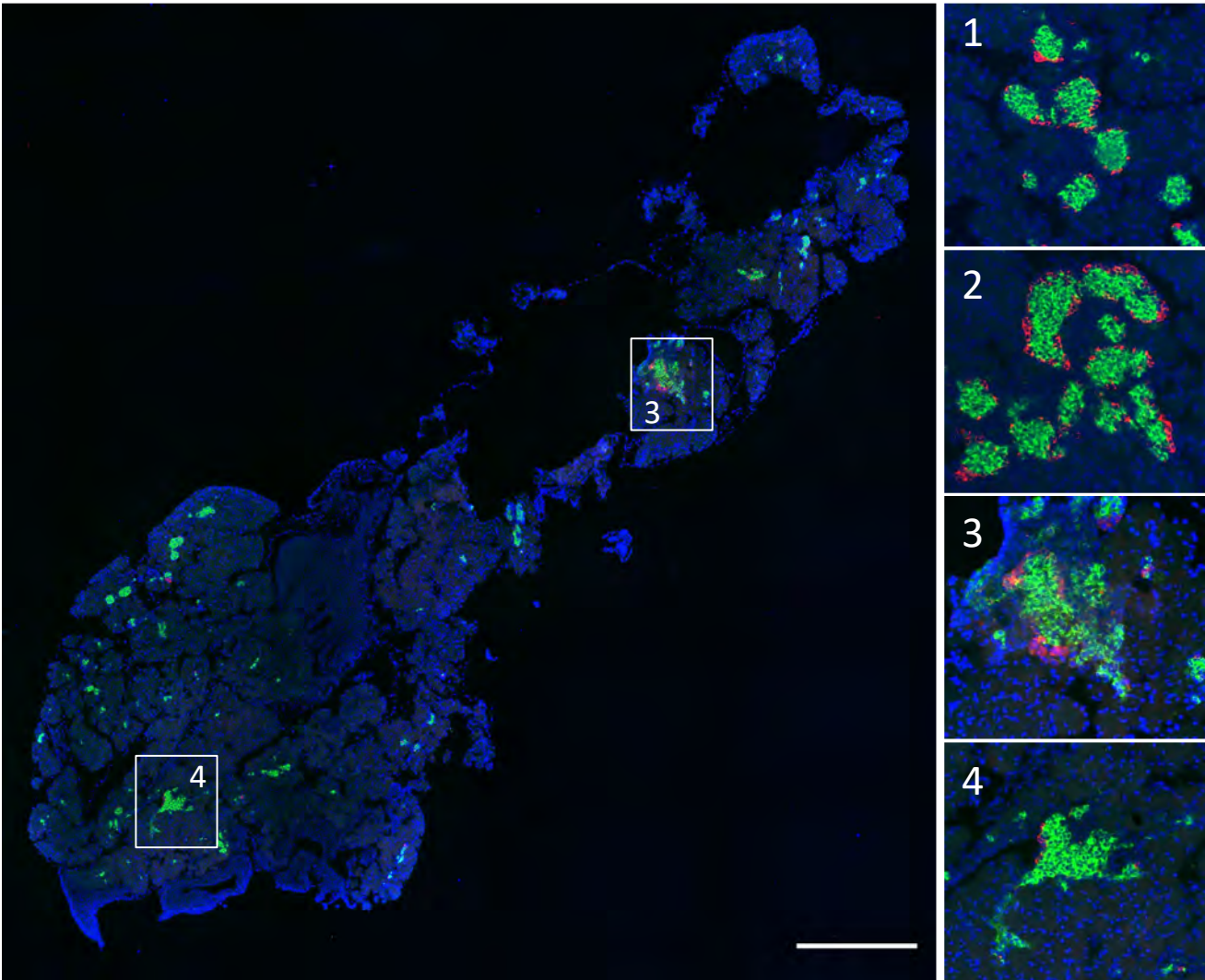
Newborn P1 Pancreas

A

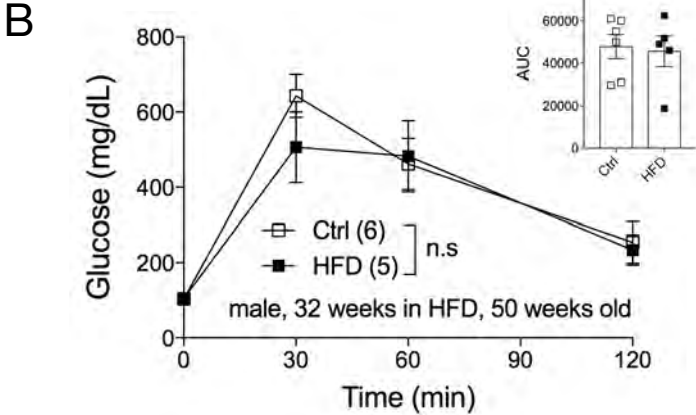
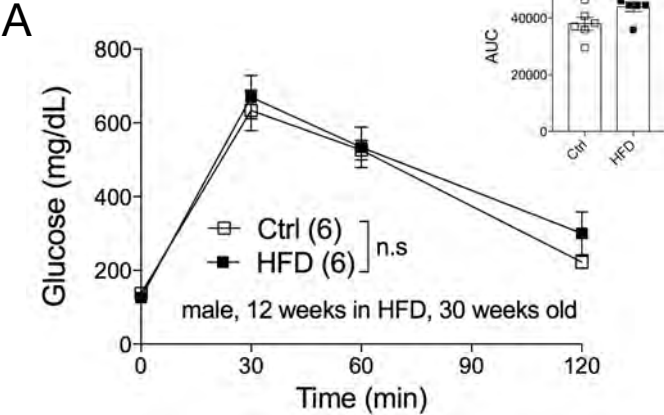
Ctrl



HFD

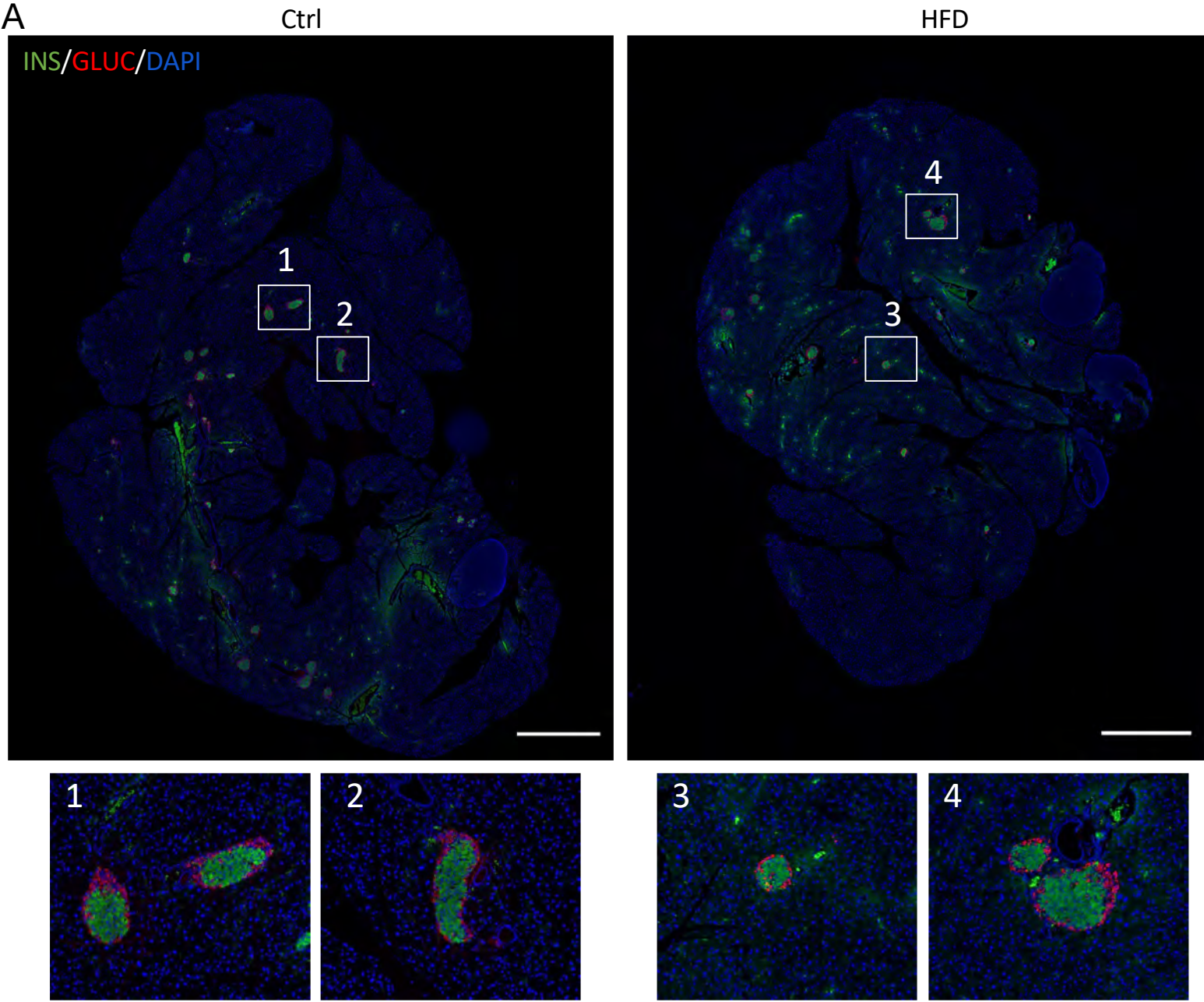


Supplemental Figure 2



Supplemental Figure 3

Adult Female Pancreas



Legends

Supplemental Figure 1. *Newborn Ctrl and HFD offspring pancreas image*

Enlarged P1 newborn Ctrl and HFD offspring pancreas image of Figure 1L at 10x magnification. Insulin (green) staining localizes to beta-cells, glucagon (red) localizes to alpha-cells, and DAPI (blue) stains nuclei of the cells. Picture insets 1-4 are enlarged to show islet morphology at 10x. Scale bars are 500 μm .

Supplemental Figure 2. *Male Ctrl and HFD offspring under HFD metabolic tests*

IPGTT of males under 12 and 32 weeks of HFD with AUC (n=6, 5-6 Ctrl and HFD offspring, **A**, **B**). At least 3 litters per treatment were used (**A**, **B**). Error bars represented \pm SEM. No significant interaction effect was found. Statistical analysis was performed using two-way ANOVA Sidak's multiple comparisons (**A**, **B**)

Supplemental Figure 3. *Adult female Ctrl and HFD offspring pancreas image*

Enlarged adult female Ctrl and HFD offspring pancreas image of Figure 5G at 10x magnification. Insulin (green) staining localizes to beta-cells, glucagon (red) localizes to alpha-cells, and DAPI (blue) stains nuclei of the cells. Picture insets 1-4 are enlarged to show islet morphology at 10x. Scale bars are 500 μm .