

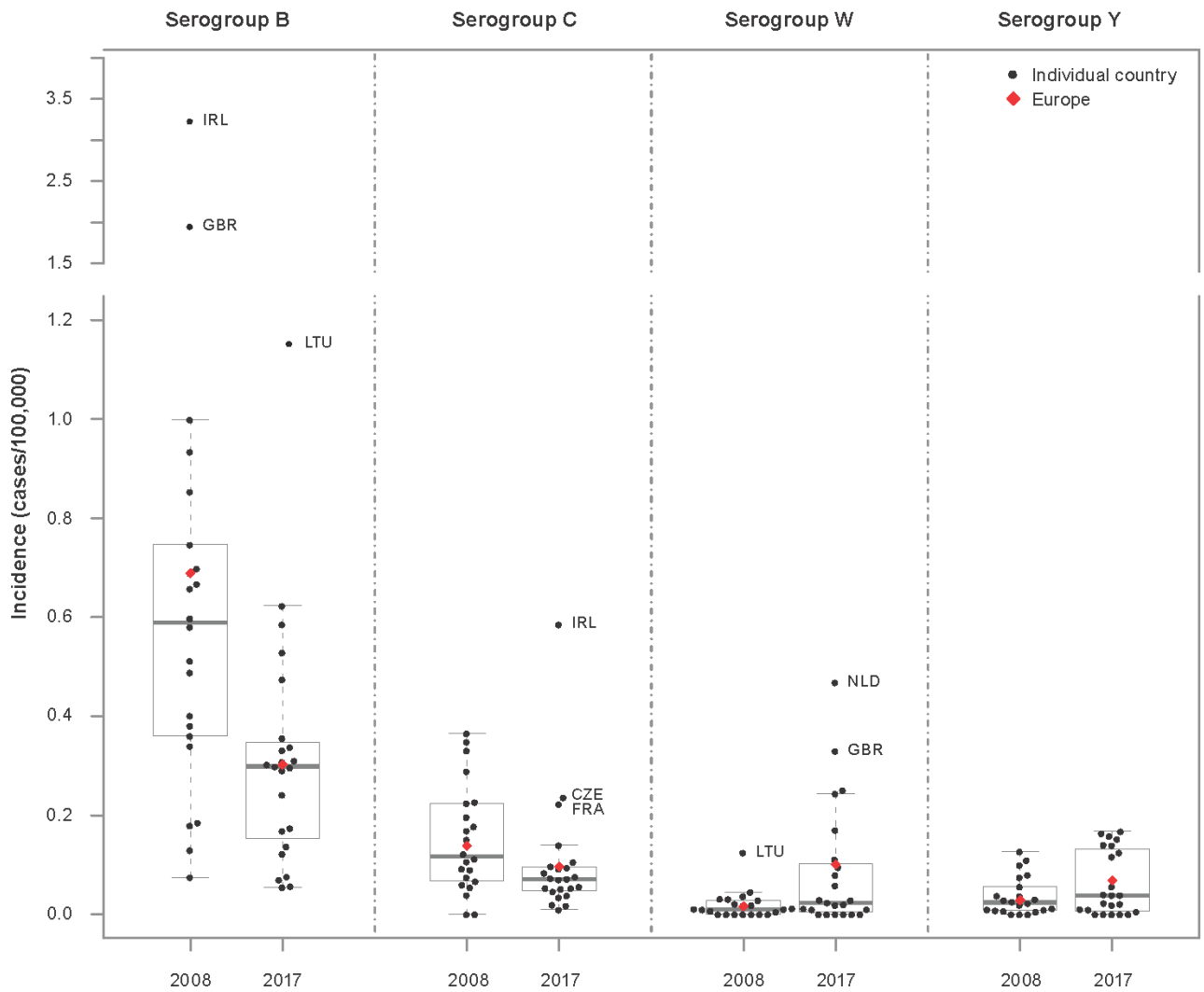
1 **Supplementary Material**

2 This supplementary material is hosted by *Eurosurveillance* as supporting information alongside  
3 the article “Evolution of Invasive Meningococcal Disease Epidemiology in Europe” on behalf of  
4 the authors, who remain responsible for the accuracy and appropriateness of the content. The  
5 same standards for ethics, copyright, attributions, and permissions as for the article apply.  
6 *Eurosurveillance* is not responsible for the maintenance of any links or email addresses  
7 provided therein.

8

9 **Supplemental Figure 1. Incidence of IMD due to serogroups B, C, W, and Y for individual**  
10 **countries and Europe, 2008 and 2017.**

11 Data are for individual countries (black circles) and Europe (26 countries included; red  
12 diamonds). Boxes indicate 25th, 50th, and 75th percentiles of incidence rates for each group;  
13 whiskers indicate lowest and largest data point excluding any outliers. CZE=Czech Republic;  
14 FRA=France; GBR=United Kingdom; IRL=Ireland; LTU=Lithuania; NLD=Netherlands.

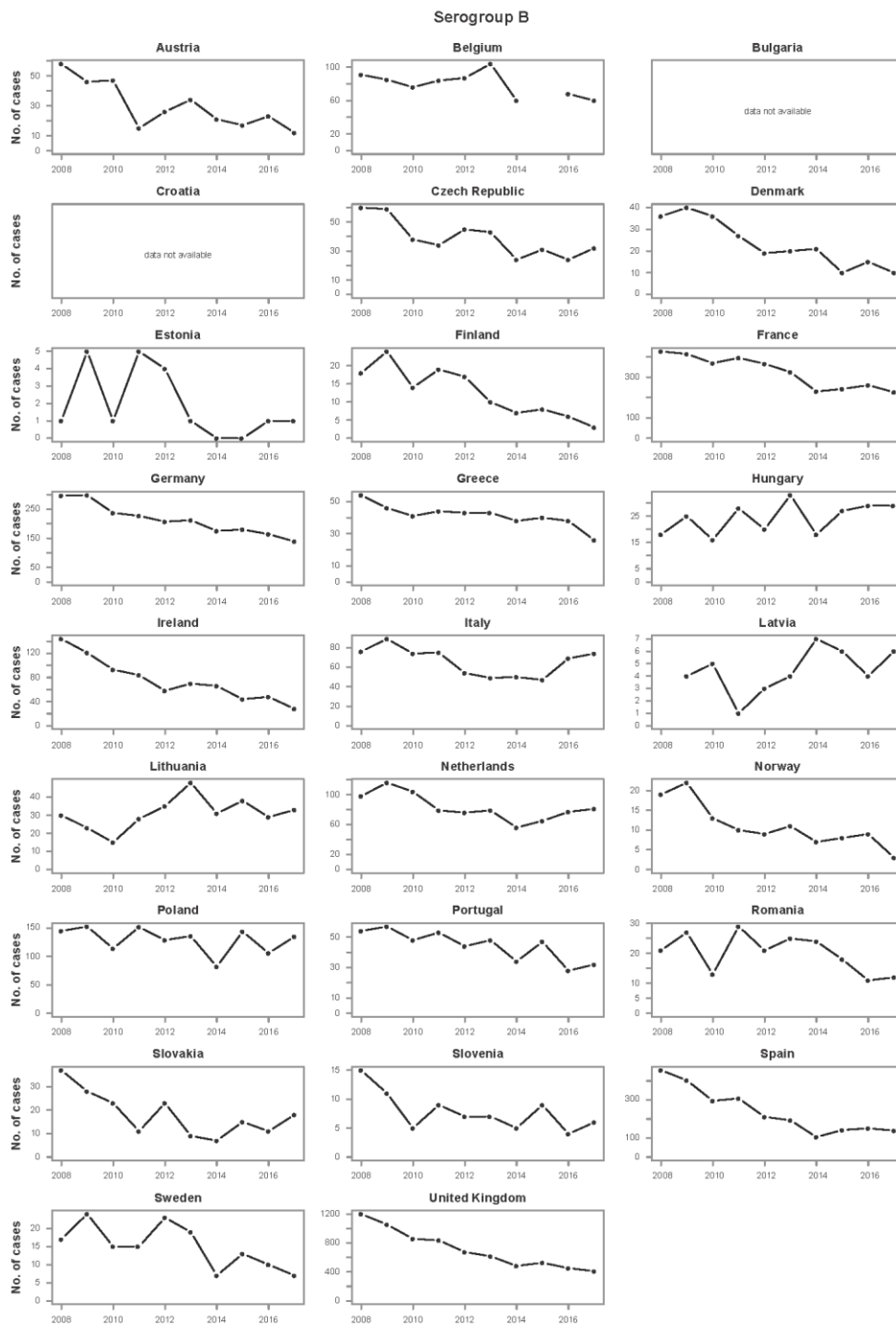


15

16

17 Supplemental Figure 2. Evolution of the number of IMD cases due to serogroups B, C, W,  
 18 and Y for individual countries, 2008–2017.

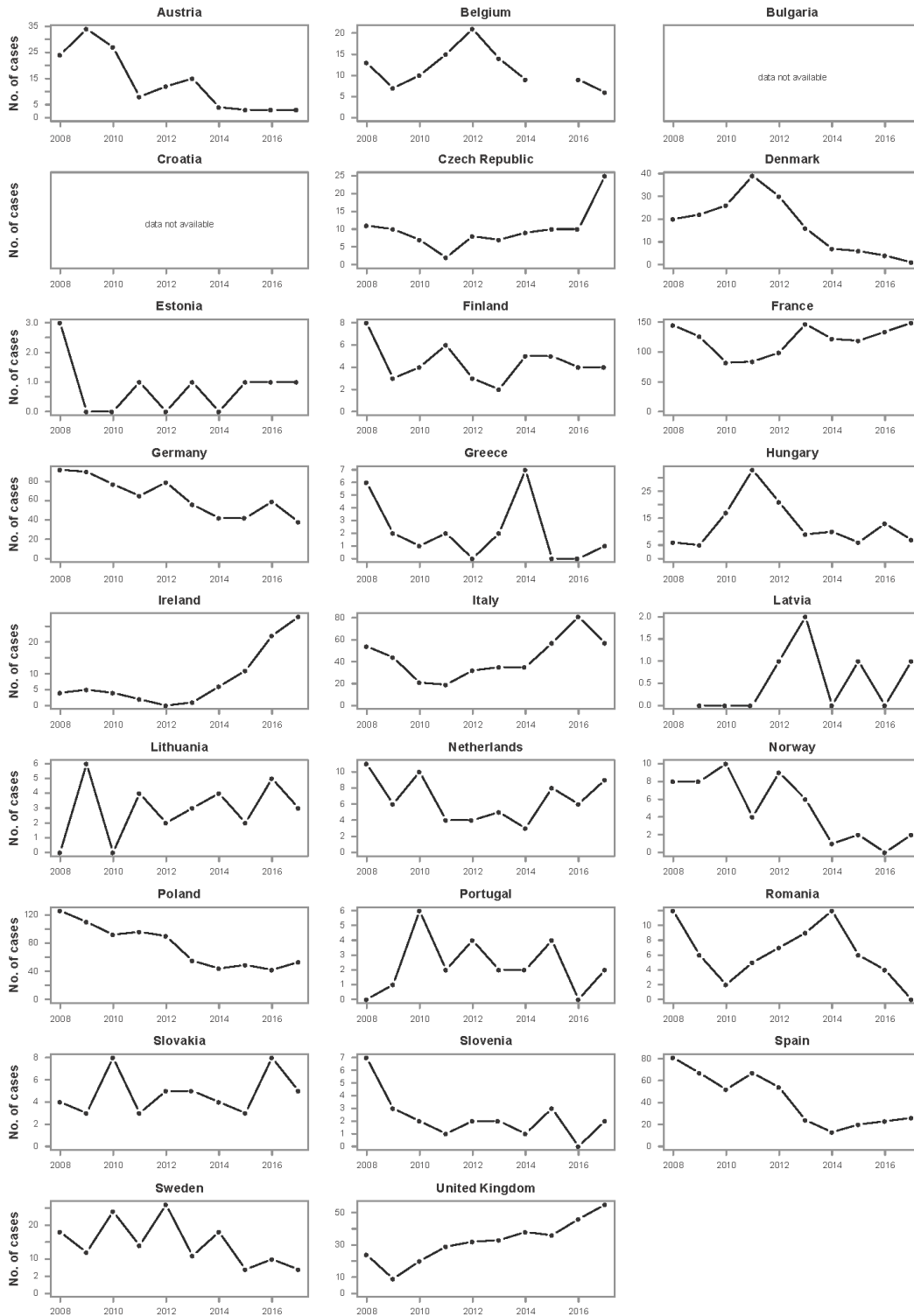
19 A. Serogroup B



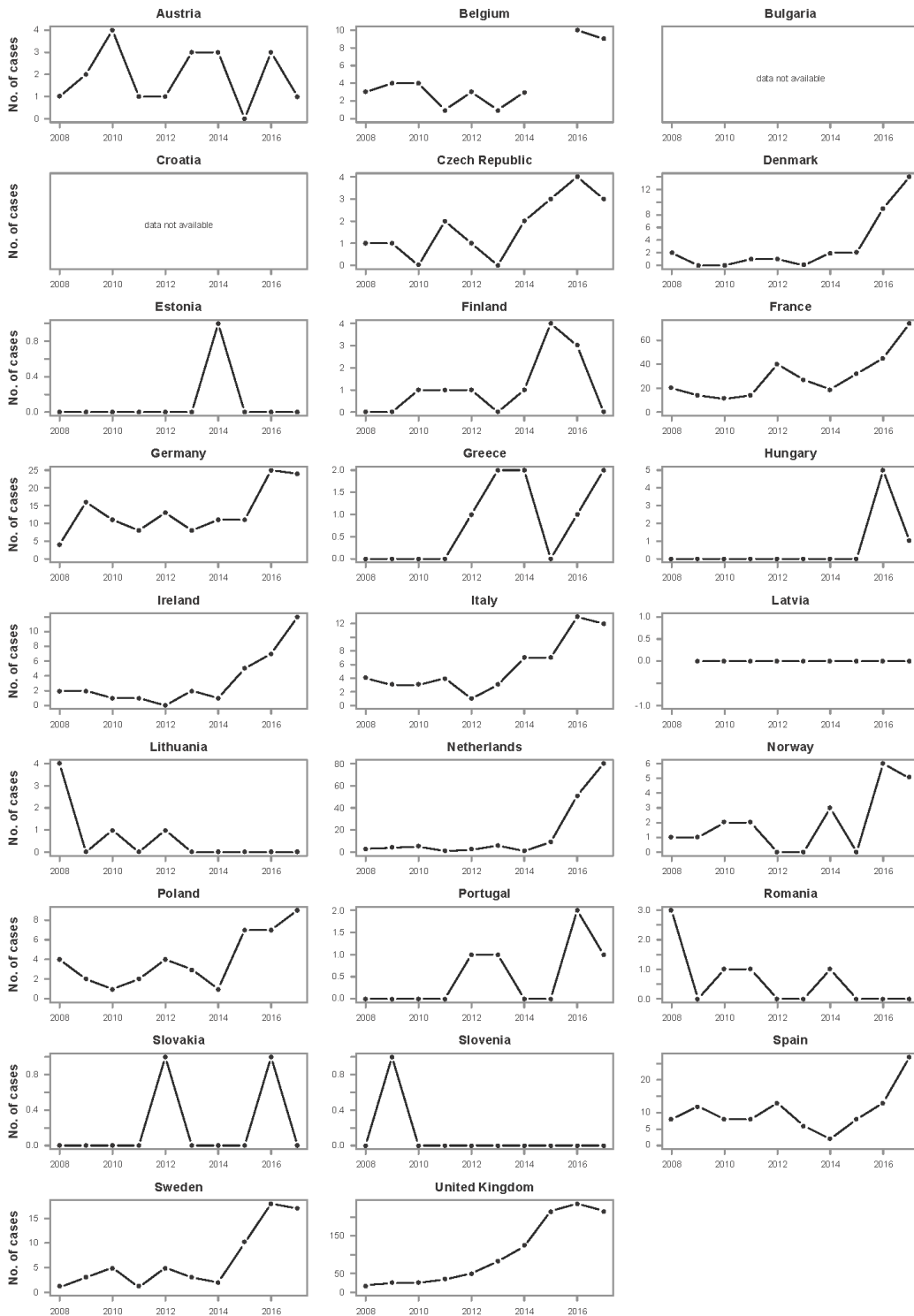
20

21 B. Serogroup C

### Serogroup C



### Serogroup W

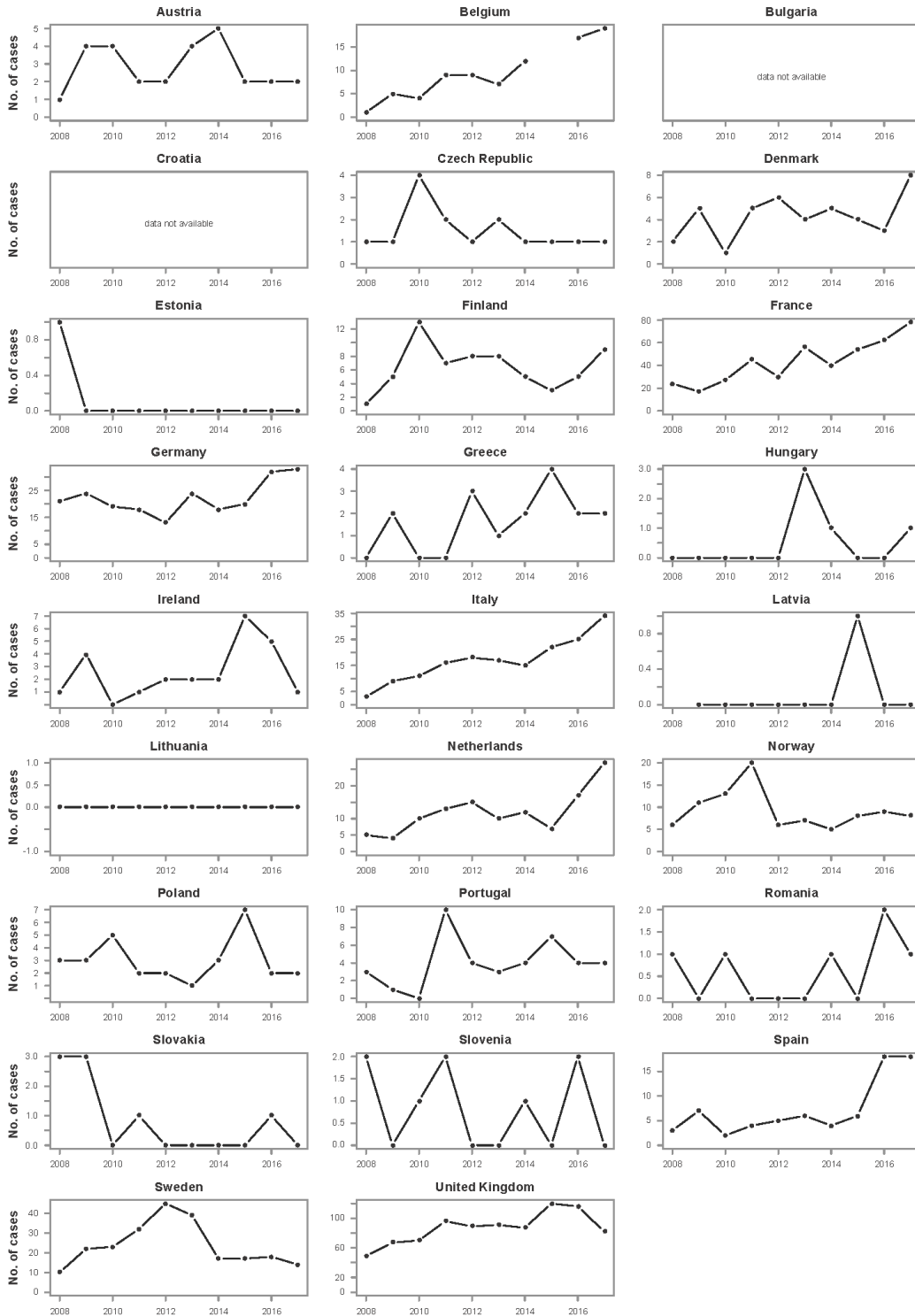


24

25

### D. Serogroup Y

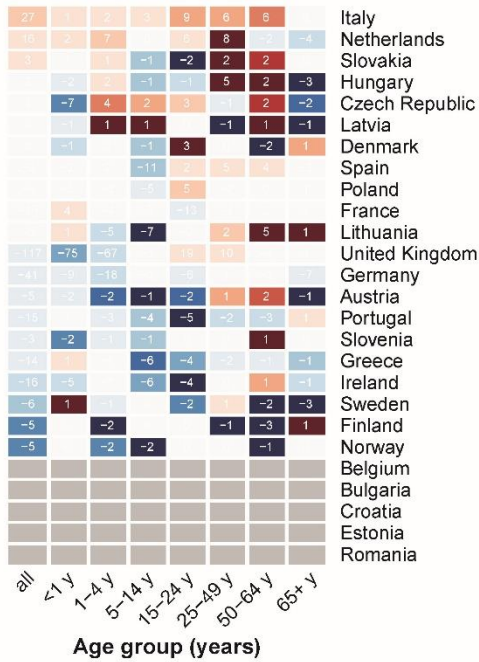
Serogroup Y



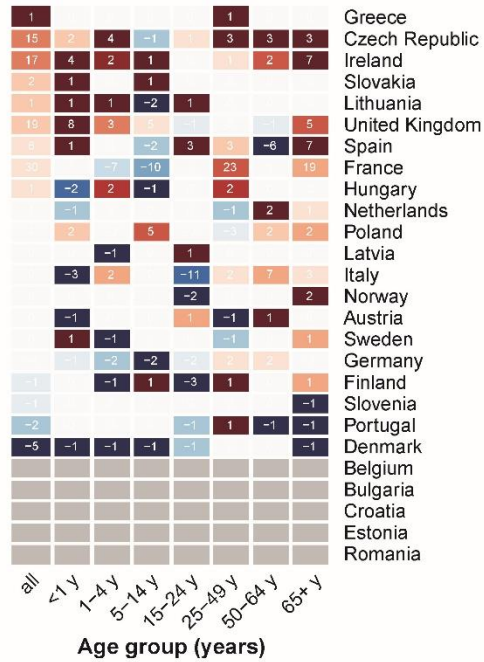
27 **Supplemental Figure 3. Two-year evolution of IMD incidence due to serogroups B, C, W,**  
28 **and Y occurring in individual countries, 2017 vs 2015.**

29 Evolution of incidence is expressed as fold changes comparing 2017 to 2015 for all age groups  
30 combined (labeled as “all”) and by individual age groups. Countries having no cases in 2015  
31 and 1 or more cases in 2017 will result in a fold change of  $+\infty$  and are shown using the darkest  
32 red (ie, 4 and above). Similarly, countries having 1 or more cases in 2015 and no cases in 2017  
33 will result in a fold change of 0 and are shown using the darkest blue (ie, 1/4 and below). [An](#)  
34 [incidence of 0 in specific age groups is likely related to the population sizes of the individual](#)  
35 [countries.](#) Countries with missing incidence data for either 2017, 2015 (ie, Belgium), or both are  
36 colored gray. The absolute difference in number of cases between 2015 and 2017 is indicated  
37 as a numeric value within each cell.

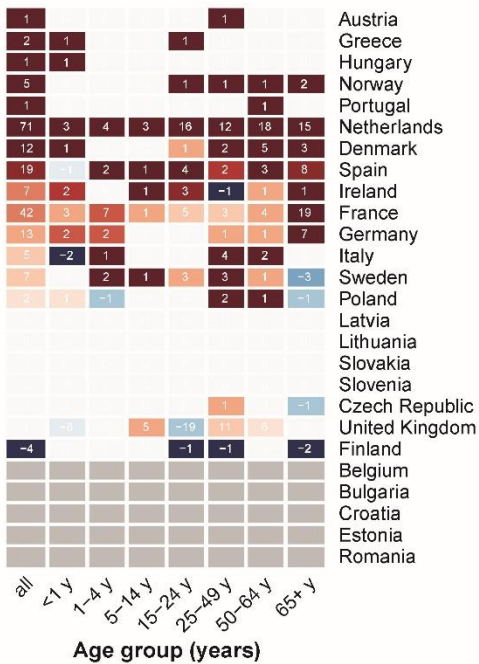
Serogroup B



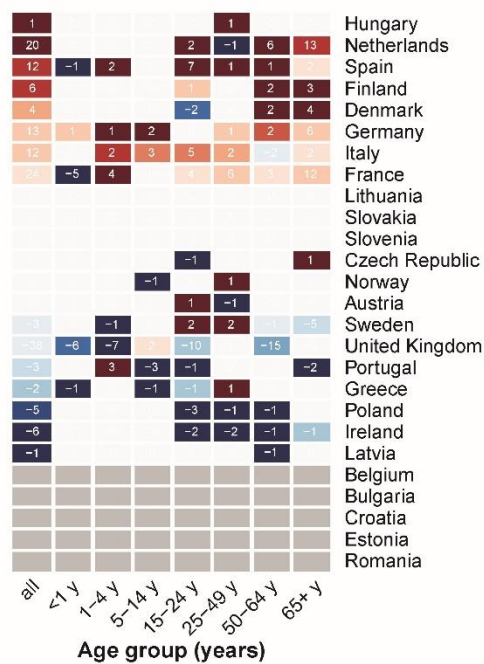
Serogroup C



Serogroup W



Serogroup Y



Fold change (2017 vs 2015)

