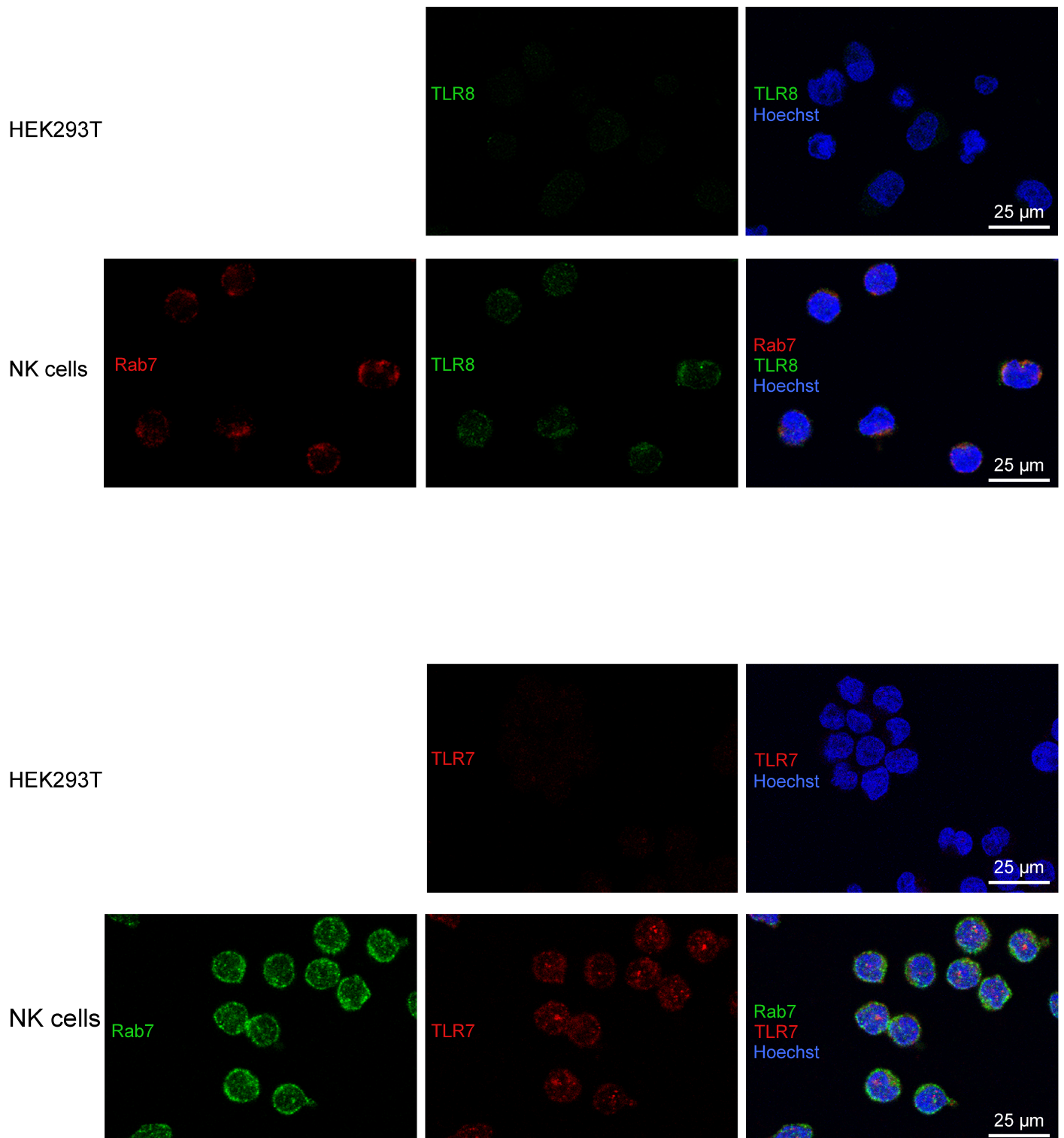


Supplementary Figure 3

**Suppl Fig. 3. TLR7 and TLR8 expression on NK cells endosomes.**

Upper panels: confocal images of TLR8 (green), Rab7 (red) and nuclear dye Hoechst (blue) merged channels. Lower panels: confocal images of TLR7 (red), Rab7 (green) and nuclear dye Hoechst (blue) merged channels. HEK293T cells were used as a negative control for the specificity of the staining. Original magnification: 60x. Bar: 25 μm for HEK293T staining and 10 μm for NK cells staining.