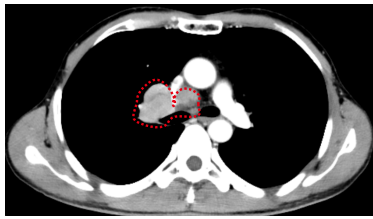
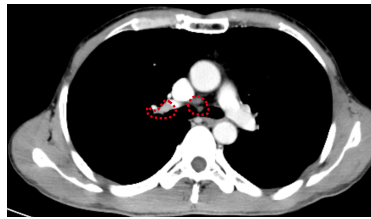
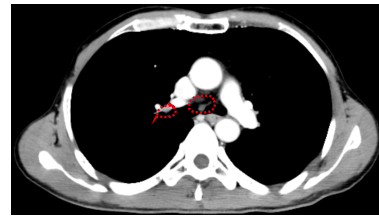
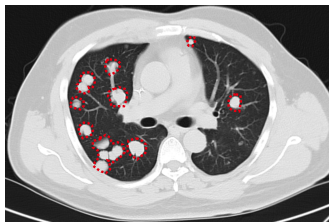
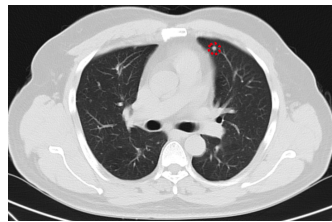
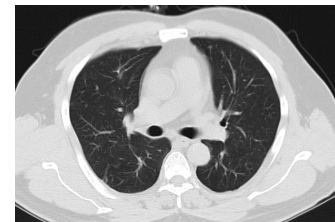
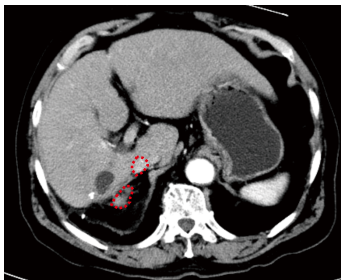


**Patient ID: N5**

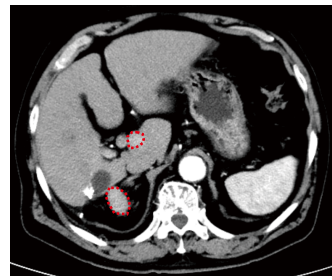
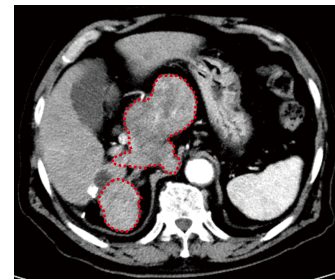
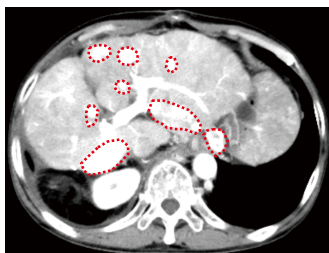
Baseline

Scanning during anti PD-1 immunotherapy  
(114 days after baseline)Final efficacy evaluation  
(344 days after baseline)**Patient ID: C1**

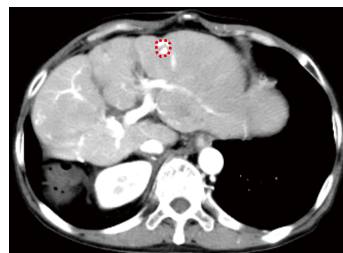
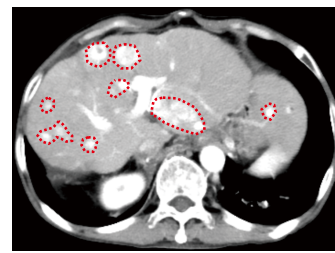
Baseline

Scanning during anti PD-1 immunotherapy  
(111 days after baseline)Final efficacy evaluation  
(373 days after baseline)**Patient ID: N2**

Baseline

Scanning during anti PD-1 immunotherapy  
(134 days after baseline)Final efficacy evaluation  
(504 days after baseline)**Patient ID: C3**

Baseline

Scanning during anti PD-1 immunotherapy  
(106 days after baseline)Final efficacy evaluation  
(186 days after baseline)**Supplementary Figure 9. Computed tomographic scannings of lesions of the DCB and NDB patients before and after anti-PD-1 monotherapy.**