

Figure S1: Histological H&E staining cartilage ECM. Control and actively treated cartilage samples for (A) articular, (B) auricular, (C) meniscal and (D) nasal cartilage indicating. Row (i, ii) native control, (iii, iv) chondroitinase ABC active, (v, vi) guanidine hydrochloride active, and (vii, viii) hyaluronidase active.

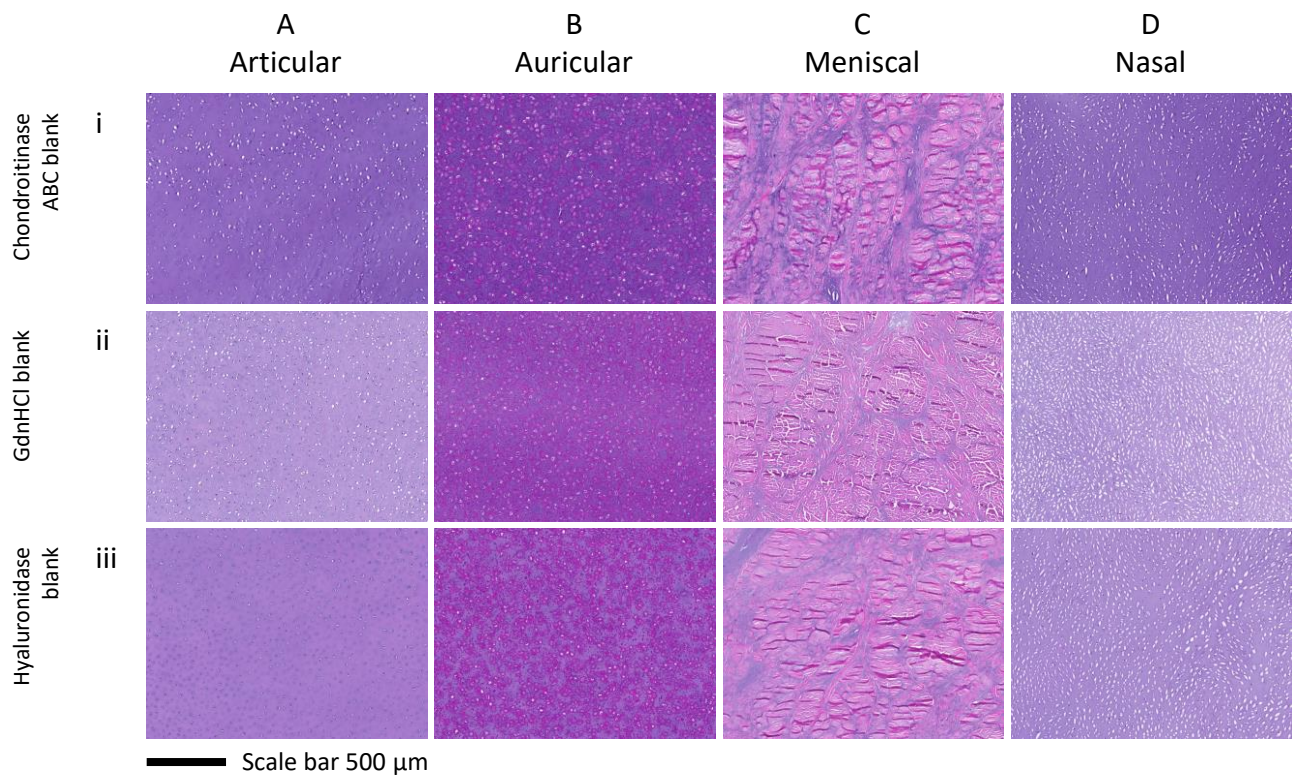


Figure S2: Histological H&E staining cartilage ECM of samples treated with blank solutions. (A) articular, (B) auricular, (C) meniscal and (D) nasal cartilage. Row (i) chondroitinase ABC blank, (ii) guanidine hydrochloride blank, and (iii) hyaluronidase blank.

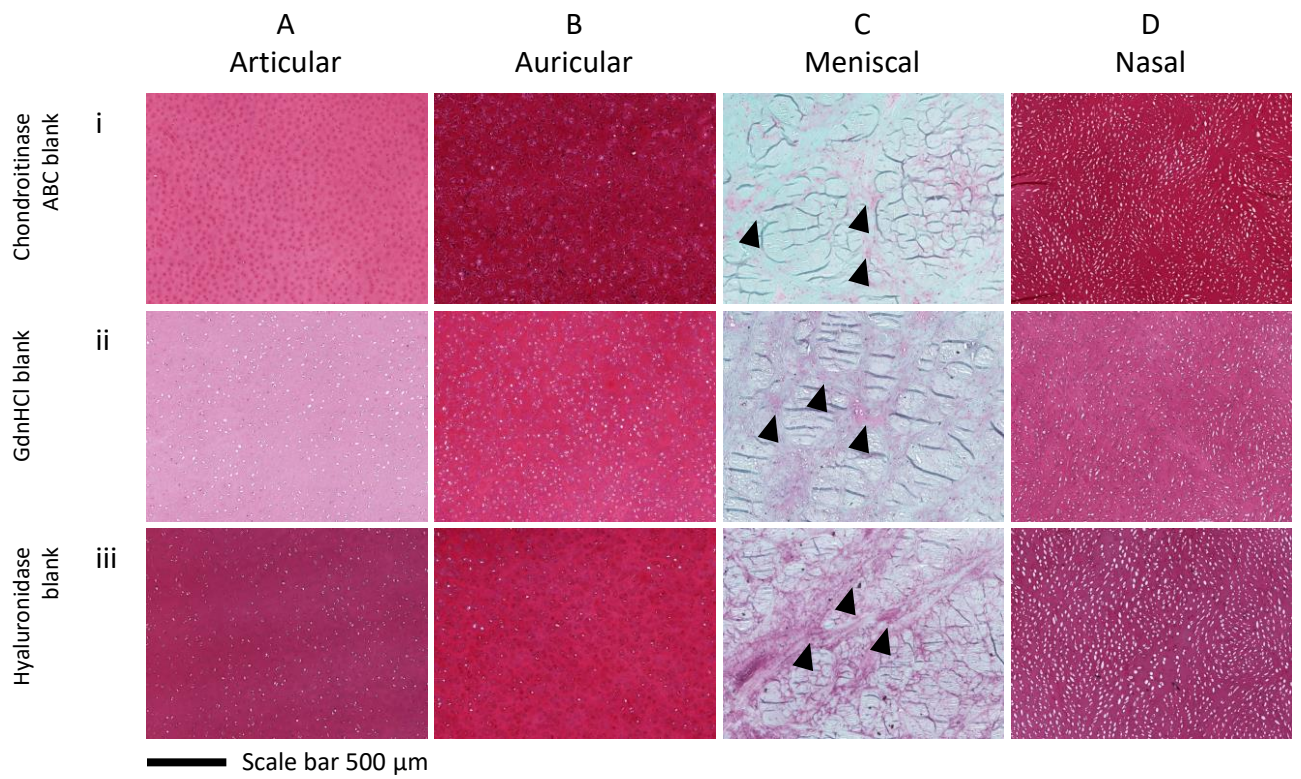


Figure S3: Histological Safranin-O staining cartilage ECM of samples treated with blank solutions. (A) articular, (B) auricular, (C) meniscal and (D) nasal cartilage indicating presence of sGAG (pink/red). Row (i) chondroitinase ABC blank, (ii) guanidine hydrochloride blank, and (iii) hyaluronidase blank. Black arrow heads indicate alignment of sGAG with collagen content in meniscal cartilage.