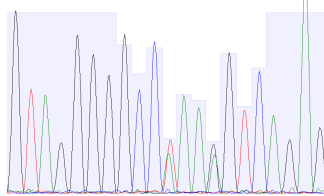


**Fig.S18**

**A**

.....

Mel202 (Q209L; R210K)

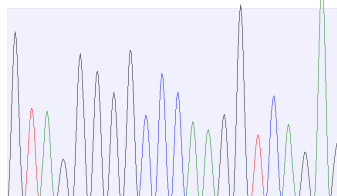


gtagggggccaaaggtcagag  
gtaggggggcctaaagtcagag

**B**

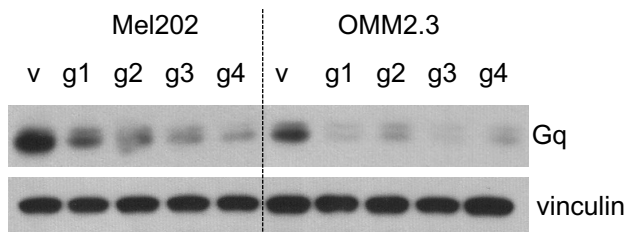
.....

OMM2.3 (Q209P)



gtagggggcccaaggtcagag

**C**



**D**

Mel202 KO Clone	GNAQ WT allele	GNAQ Mutant allele
#1	246 bp indel (49 bp in exon)	3 bp indel
#2	2 bp indel	3 bp indel
#3	1 bp indel	3 bp indel
#4	4 bp indel	Q176K
#5	1 bp indel	6 bp indel
#6	9 bp indel	9 bp indel

**E**

OMM2.3 KO Clone	gRNA	GNAQ Mutant allele 1	GNAQ Mutant allele2	OMM2.3 KO Clone	gRNA	GNAQ Mutant allele 1	GNAQ Mutant allele2
#1	g1	No editing	32 bp indel	#17	g2	1 bp indel	6 bp indel
#2	g1	No editing	6 bp indel	#18	g3	No editing	27 bp indel
#3	g1	No editing	1 bp indel	#19	g3	No editing	8 bp indel
#4	g1	No editing	16 bp indel	#20	g3	No editing	8 bp indel
#5	g1	No editing	21 bp indel	#21	g3	No editing	35 bp indel
#6	g1	No editing	1 bp indel	#22	g3	No editing	10 bp indel
#7	g1	No editing	4 bp indel	#23	g3	No editing	8 bp indel
#8	g2	10 bp indel	6 bp indel	#24	g3	No editing	8 bp indel
#9	g2	4 bp indel	6 bp indel	#25	g3	No editing	8 bp indel
#10	g2	1 bp indel	6 bp indel	#26	g4	No editing	1 bp indel
#11	g2	11 bp indel	6 bp indel	#27	g4	No editing	1 bp indel
#12	g2	6 bp indel	6 bp indel	#28	g4	No editing	34 bp indel
#13	g2	2 bp indel	6 bp indel	#29	g4	No editing	1 bp indel
#14	g2	2 bp indel	6 bp indel	#30	g4	No editing	11 bp indel
#15	g2	Not editing	9 bp indel	#31	g4	No editing	1 bp indel
#16	g2	1 bp indel	6 bp indel	#32	g4	No editing	37 bp indel