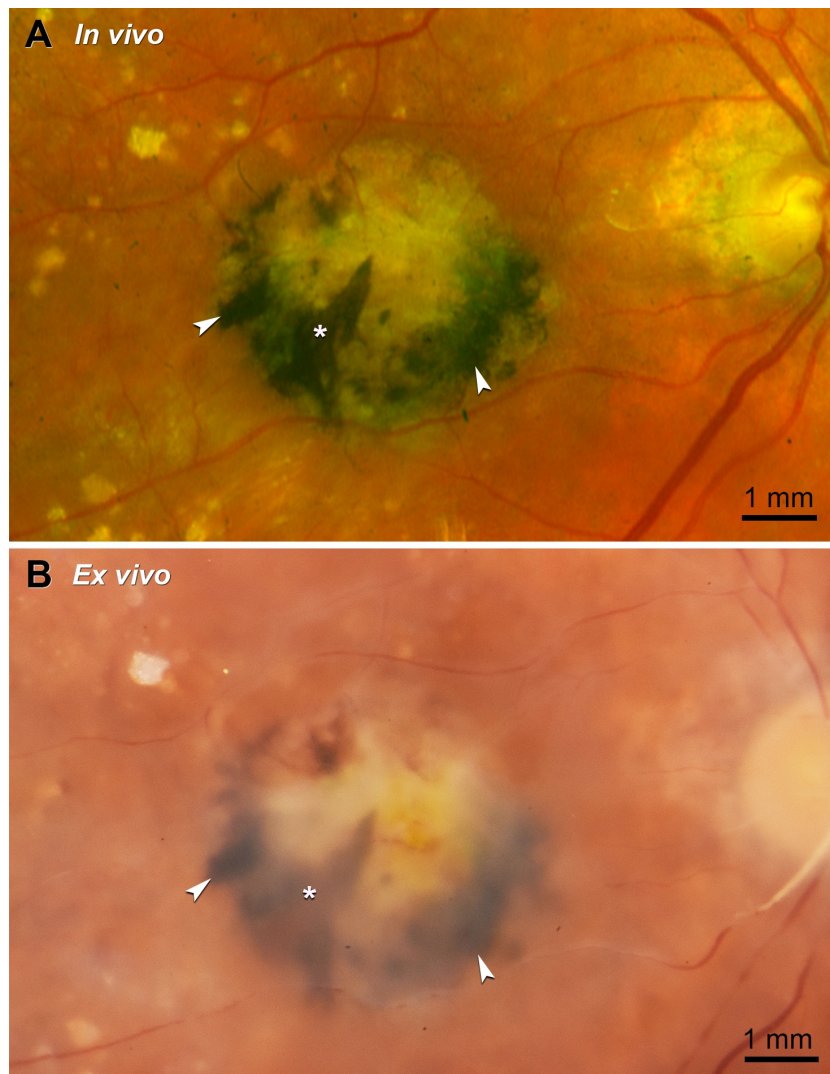


SUPPLEMENTARY MATERIAL

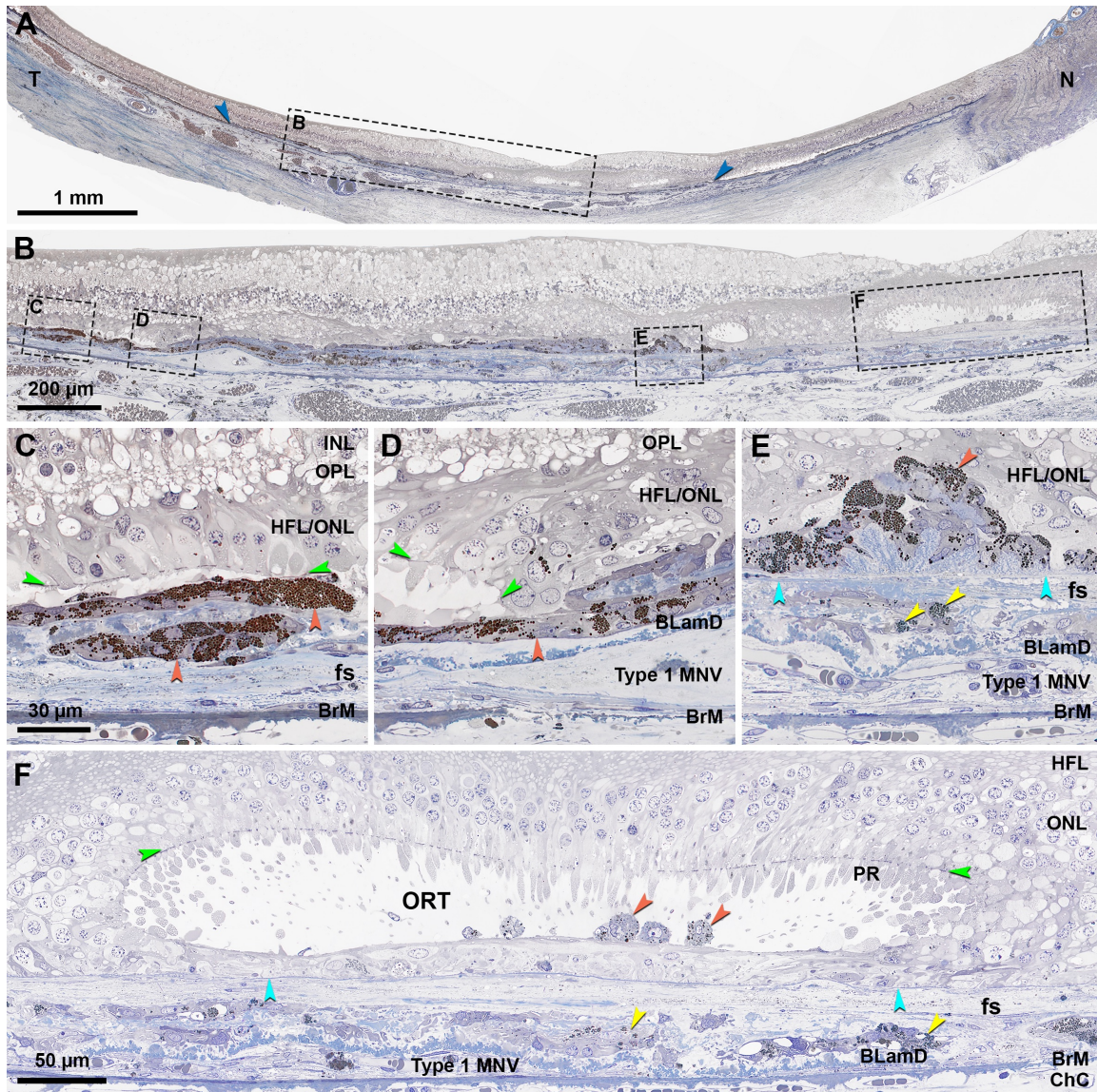
Chen, L., Cao, D., Messinger, J. D., Ach, T., Ferrara, D., Freund, K. B., Curcio, C. A.
2021 Histology and clinical imaging lifecycle of black pigment in fibrosis secondary to
neovascular age-related macular degeneration.

Experimental Eye Research



Supplementary Figure 1. Fundus appearance at last clinical visit and in laboratory.

A. Color fundus photograph (CFP) of the right eye acquired at the last clinical visit, 16 months before patient death, shows a central subretinal fibrosis with black pigment around the rim (white arrowheads), with a prominent spear-like extension (white asterisk). **B.** *Ex vivo* CFP shows the central subretinal fibrosis and black pigment in a virtually identical size and distribution (white arrowheads and asterisk) despite a 16-month interval.



Supplementary Figure 2. Cells with spherical melanosomes in different locations and layers.

This section is superior to the one shown in Figure 3. **A.** Panoramic view of histology shows a central fibrotic scar (blue), with frame magnified in (B). **B.** Histology of the fibrotic scar at a higher magnification shows melanotic cells in different locations. Four frames are magnified in (C-F), respectively. **C.** Outer retinal atrophy. Cells with dense dark spherical melanosomes (orange) form two layers within the fibrotic scar (fs). The ELM (green) is visible. Outer segments are absent. Cone inner segments and cell bodies are inwardly retracted. **D.** At the descent of the ELM, i.e., the border of atrophy. A continuous layer of melanotic cells spans the ELM descent, parallel to but separated from BLamD covering type 1 MNV. BrM on the right side is very thin with a partial defect. **E.** A mound of cells with densely packed spherical melanosomes (orange) above a solid

line (teal) bounding the fs. Several granule aggregates (yellow) were observed underneath the fs. **F.** Rounded cells with sparse organelles (orange) were found inside outer retinal tubulation (ORT). Teal arrowheads, a solid line on the top of the fs. Yellow arrowheads, entombed RPE. Abbreviations: BLamD, basal laminar deposit; BrM, Bruch's membrane; ChC, choriocapillaris; ELM, external limiting membrane; fs, fibrotic scar; HFL, Henle fiber layer; HFL/ONL, dyslamination of HFL and ONL; INL, inner nuclear layer; MNV, macular neovascularization; N, nasal; ONL, outer nuclear layer; OPL, outer plexiform layer; PR; photoreceptors; RPE, retinal pigment epithelium; T, temporal. Scale bar in C applies to C-E.