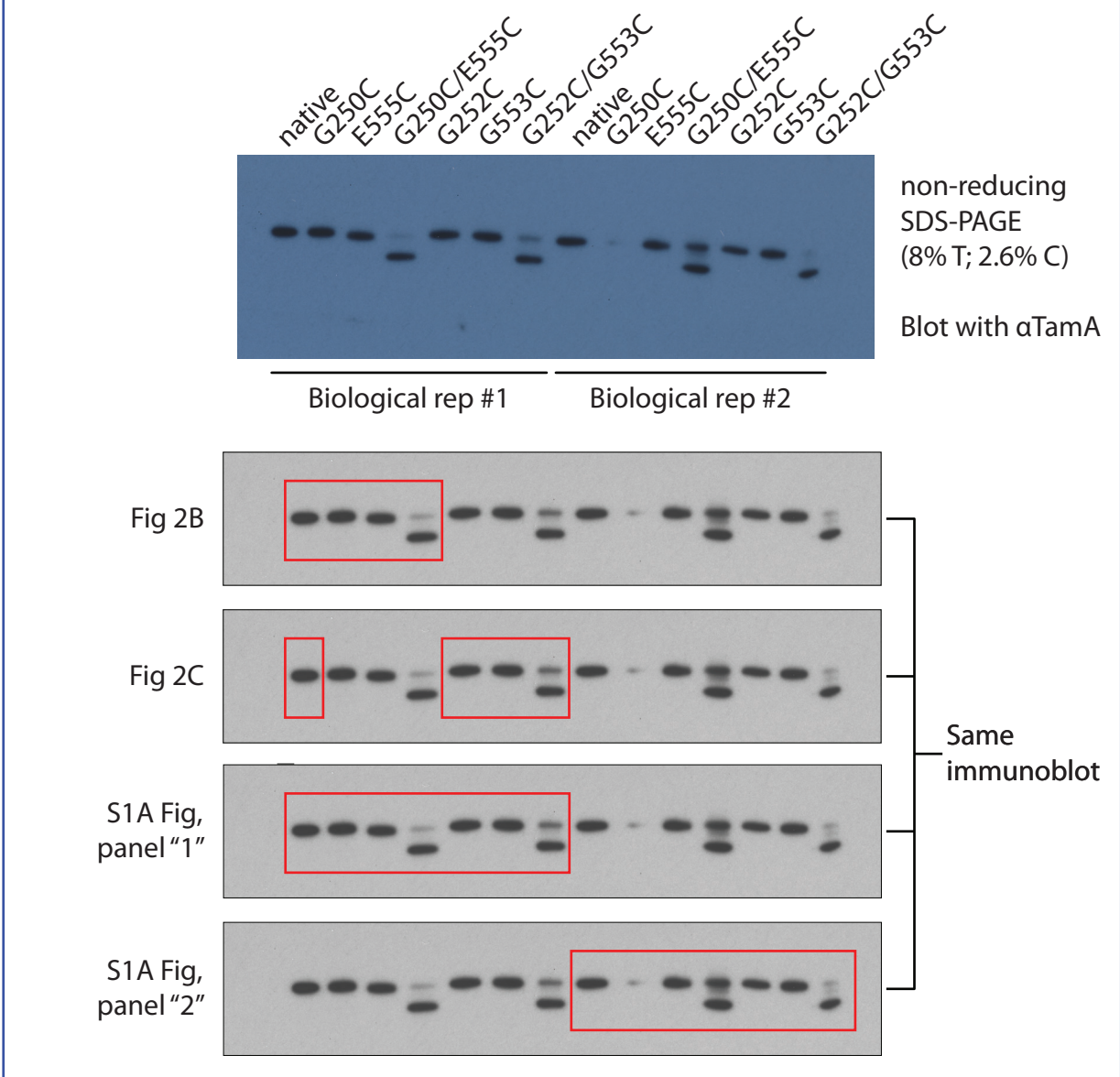
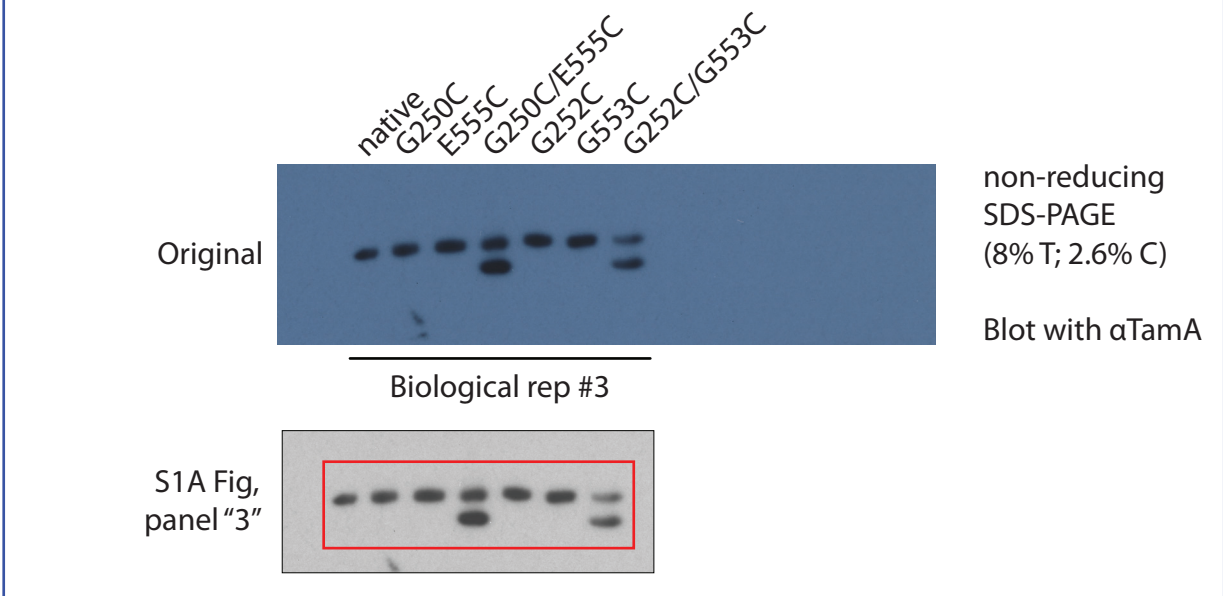


TamA oxidised v reduced: Fig 2B, 2C, S1A Fig (2/2 immunoblots)

Immunoblot #1 - (raw image file for Fig. 2B, 2C, S1A Fig panel "1" and S1A Fig panel "2")

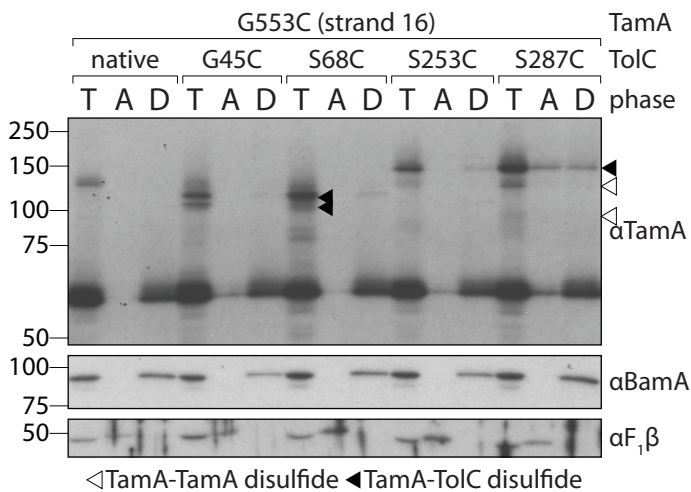
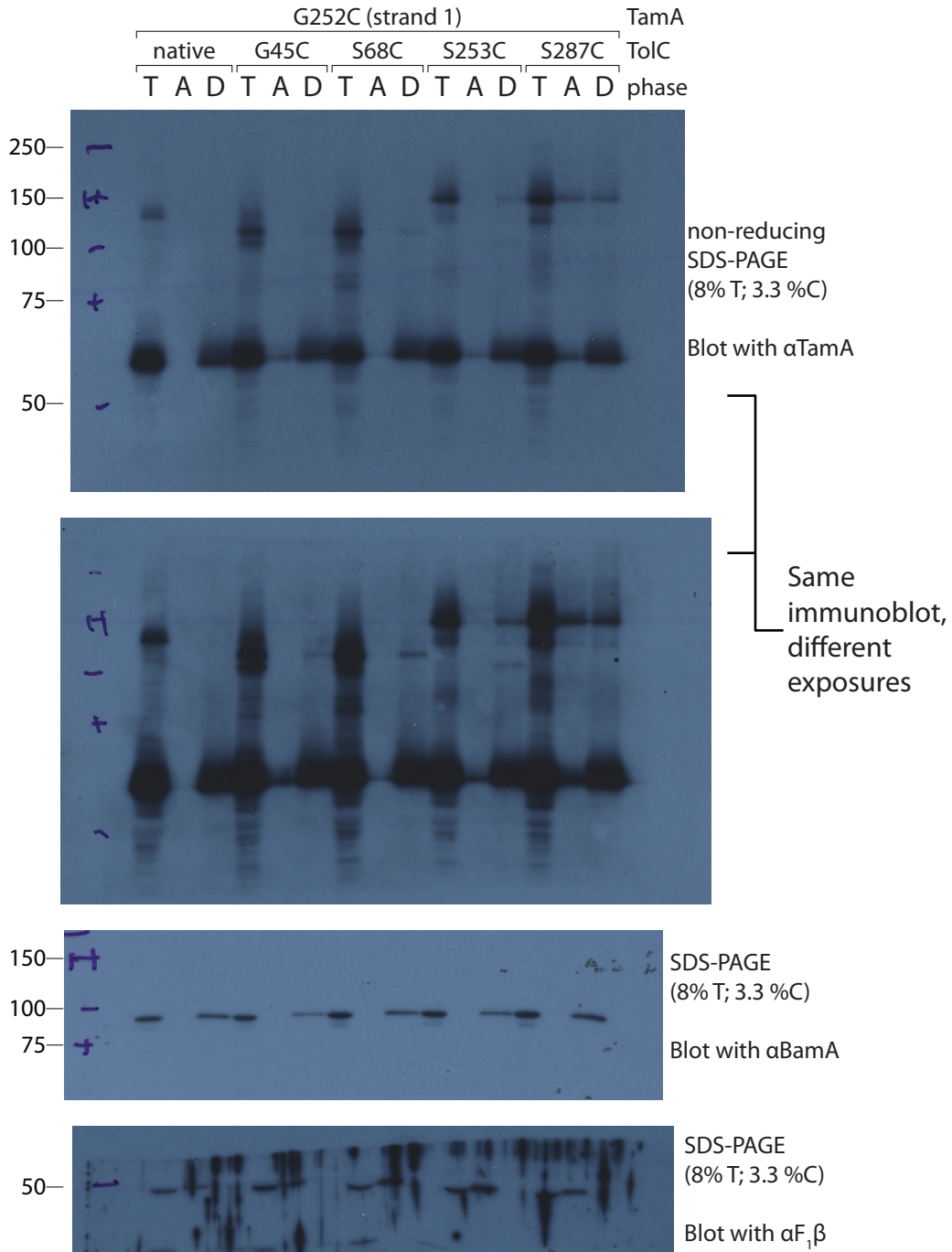


Immunoblot #2 - (raw image file for S1A Fig, panel "3")



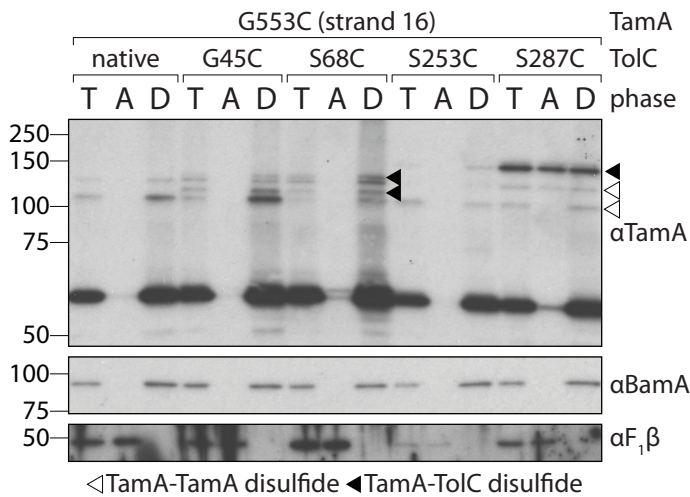
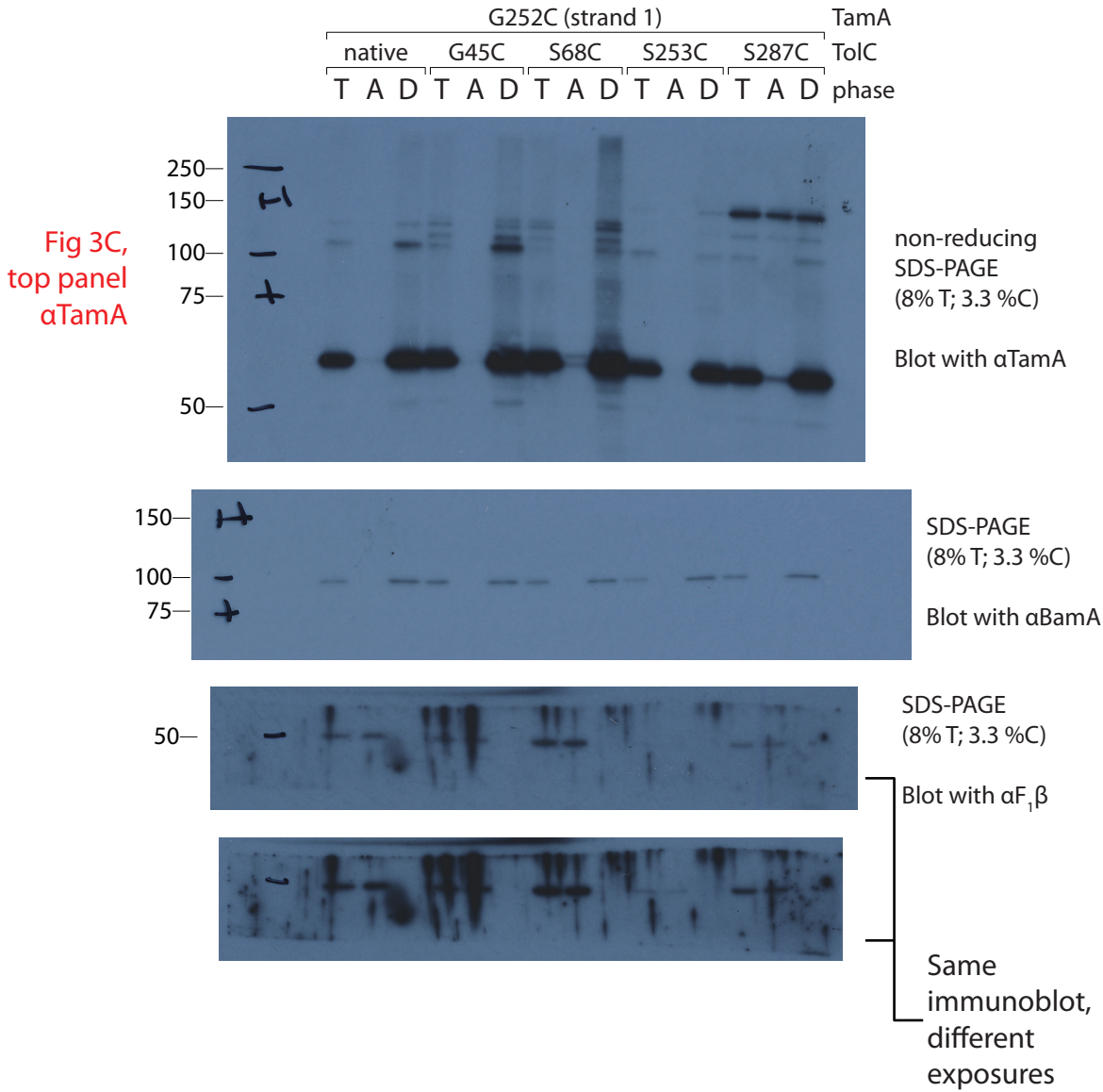
TamA-TolC crosslinks Fig 3C, 3D (3/18 immunoblots - total of 3/18 immunoblots)

Immunoblots #3-5 - (biological replicate 1 of Fig 3C, not included in figure itself)



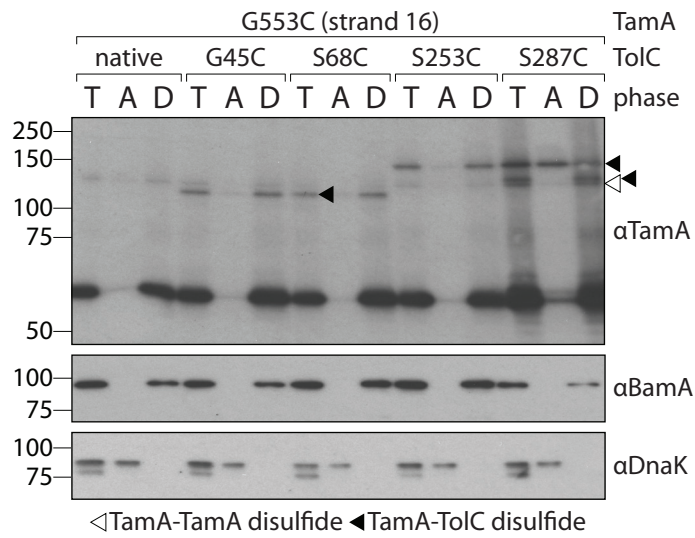
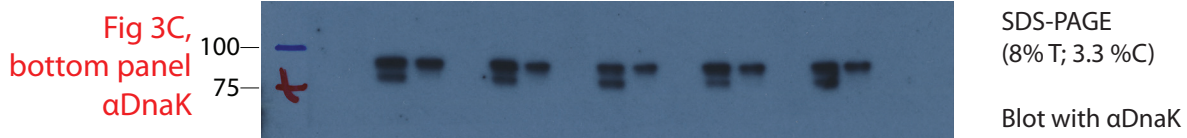
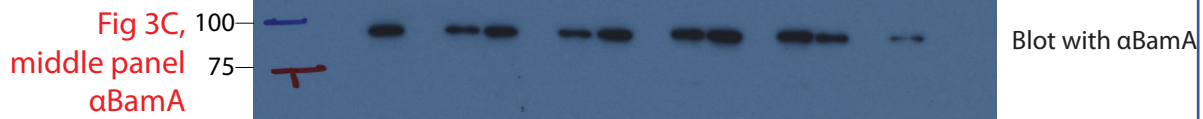
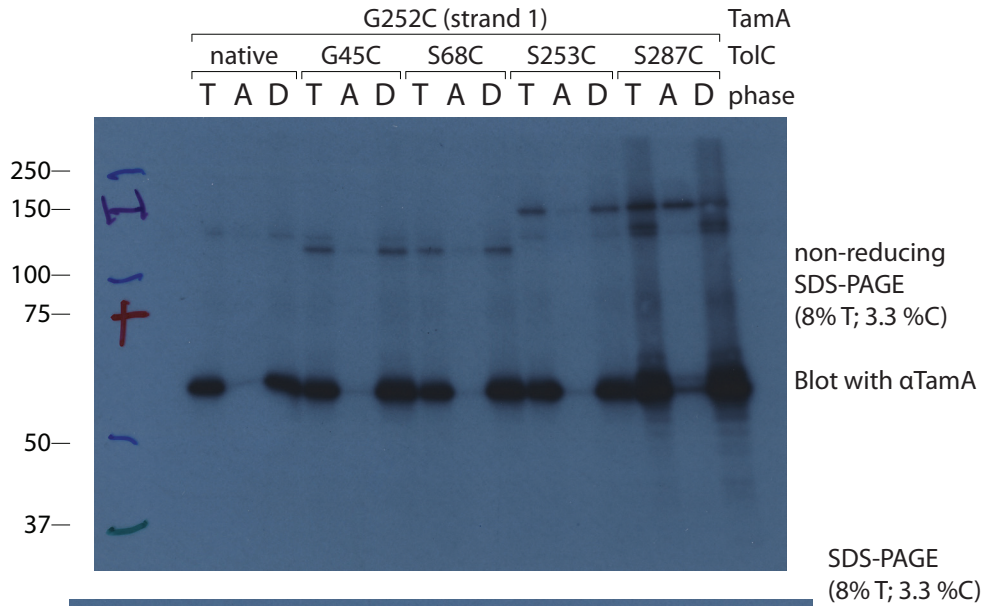
TamA-TolC crosslinks Fig 3C, 3D (3/18 immunoblots - total of 6/18 immunoblots)

Immunoblots #6-8 - (biological replicate 2 of Fig 3C)



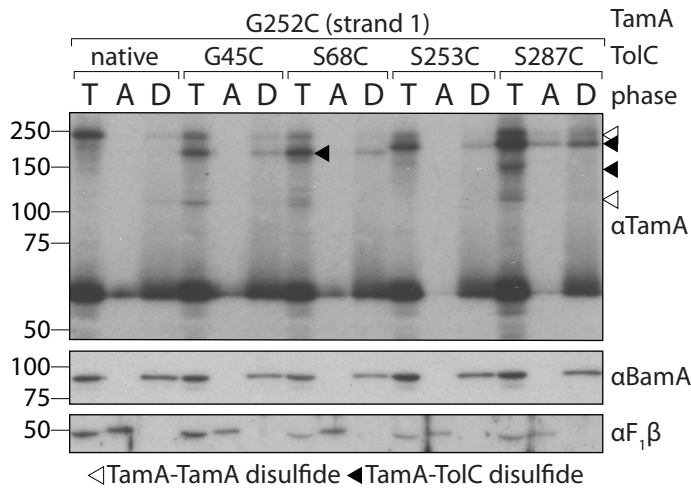
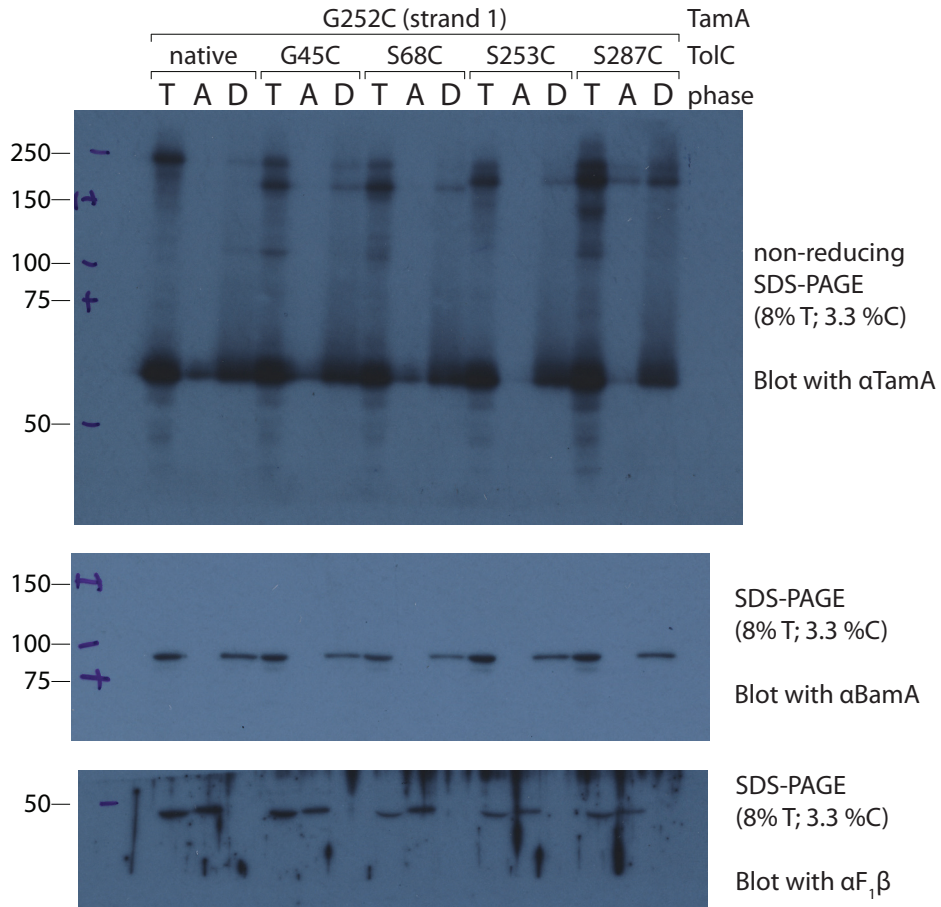
TamA-TolC crosslinks Fig 3C, 3D (3/18 immunoblots - total of 9/18 immunoblots)

Immunoblots #6-8 - (biological replicate 3 of Fig 3C)



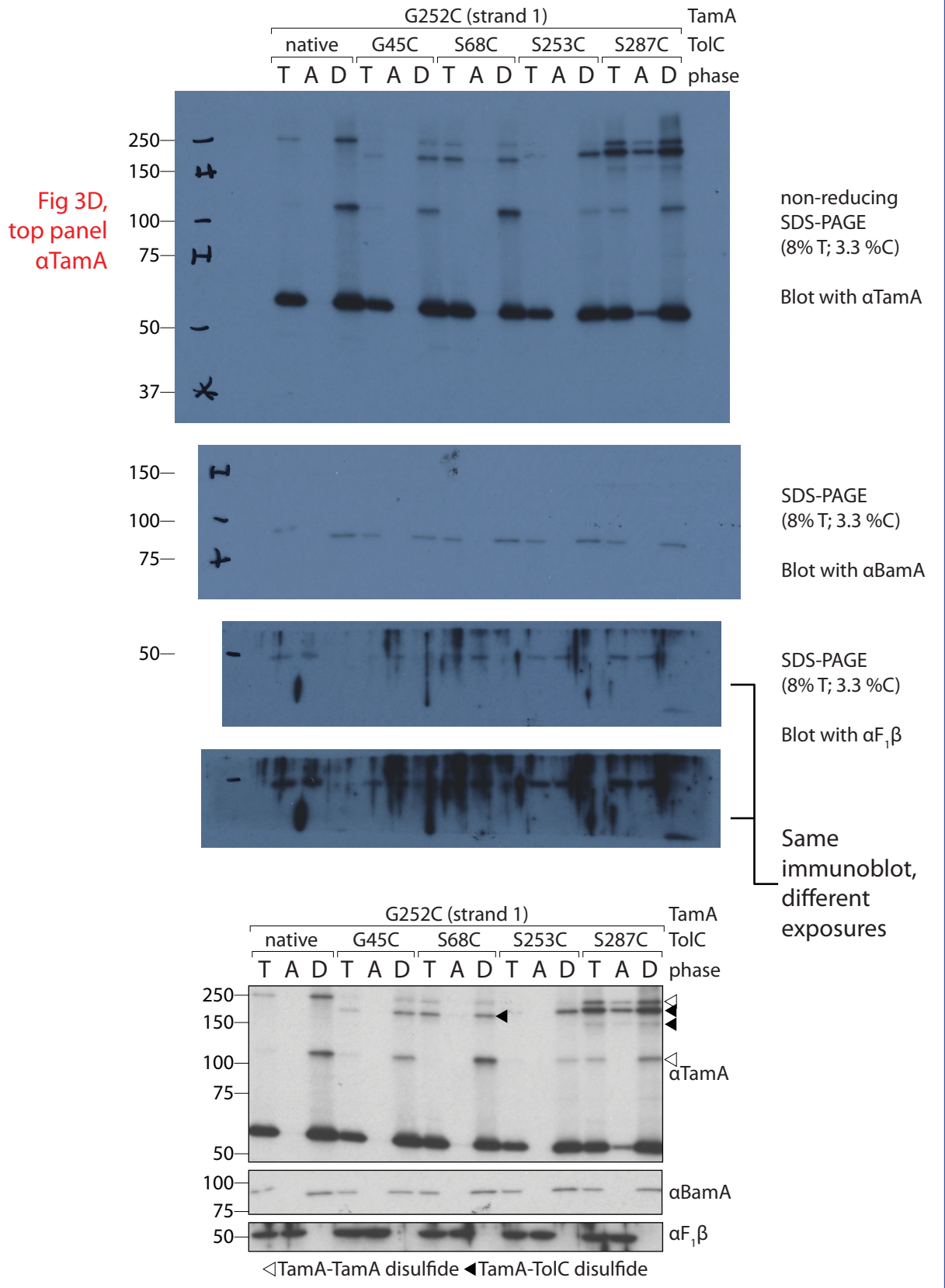
TamA-TolC crosslinks Fig 3C, 3D (3/18 immunoblots - total of 12/18 immunoblots)

Immunoblots #12-14 - (biological replicate 1 of Fig 3D, not included in figure itself)



TamA-TolC crosslinks Fig 3C, 3D (3/18 immunoblots - total of 15/18 immunoblots)

Immunoblots #15-17 - (biological replicate 2 of Fig 3D)



TamA-TolC crosslinks Fig 3C, 3D (3/18 immunoblots - total of 18/18 immunoblots)

Immunoblots #18-20 - (biological replicate 3 of Fig 3D)

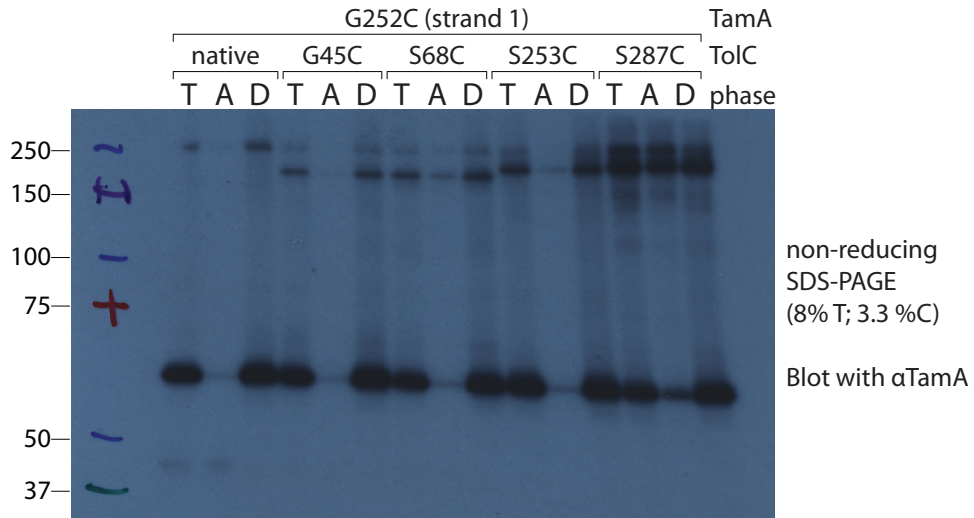


Fig 3D,
middle panel
 α BamA

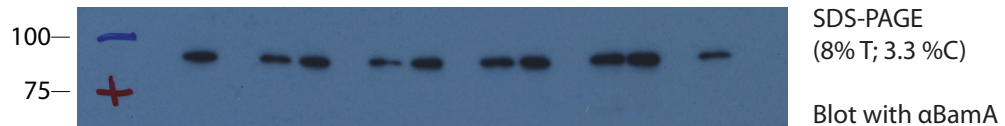
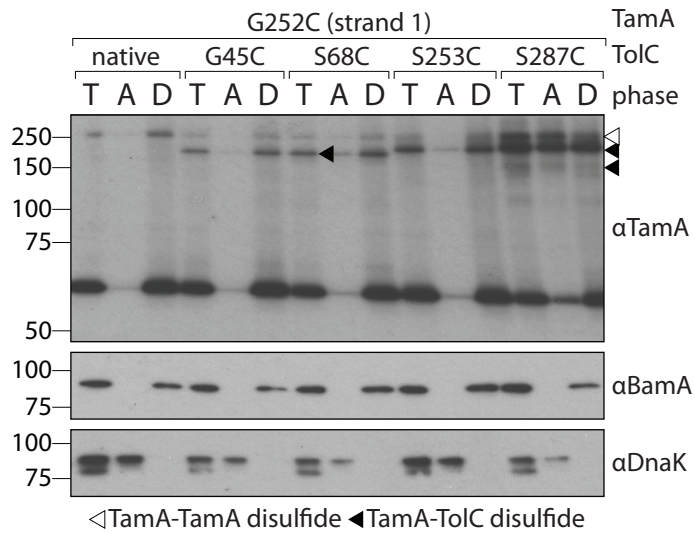
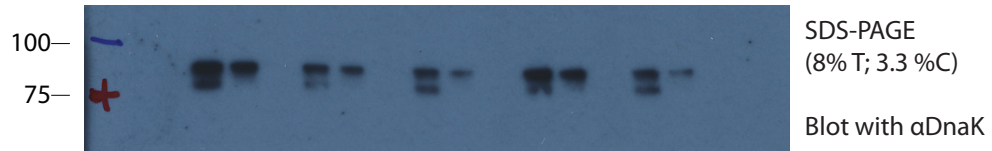
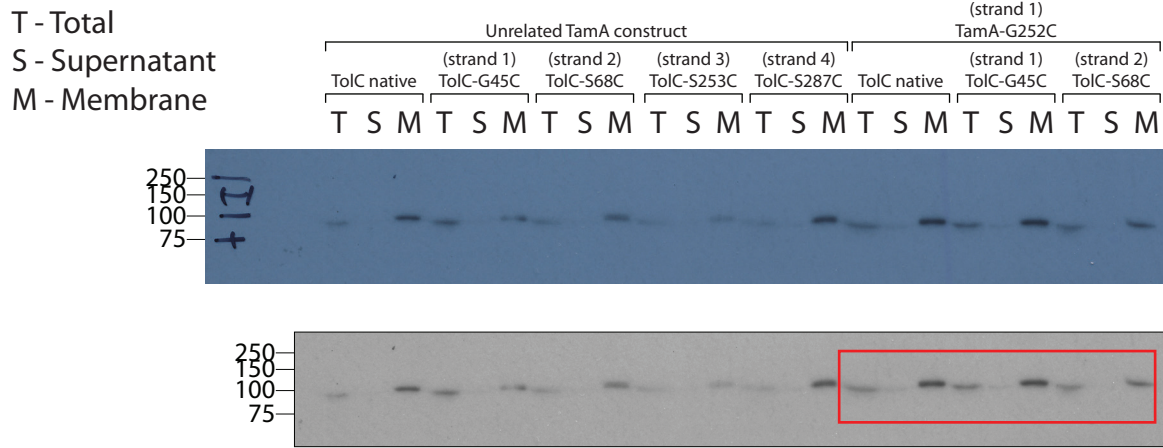


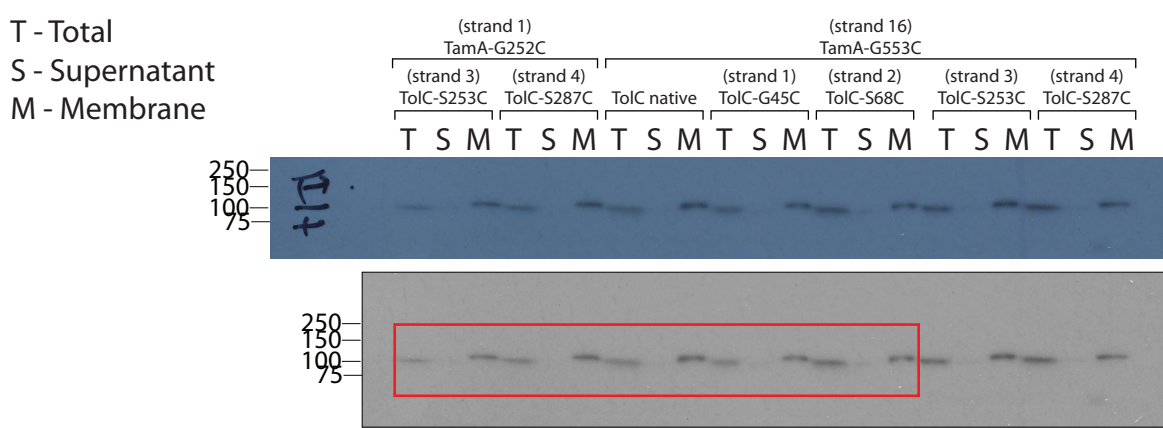
Fig 3D,
bottom panel
 α DnaK



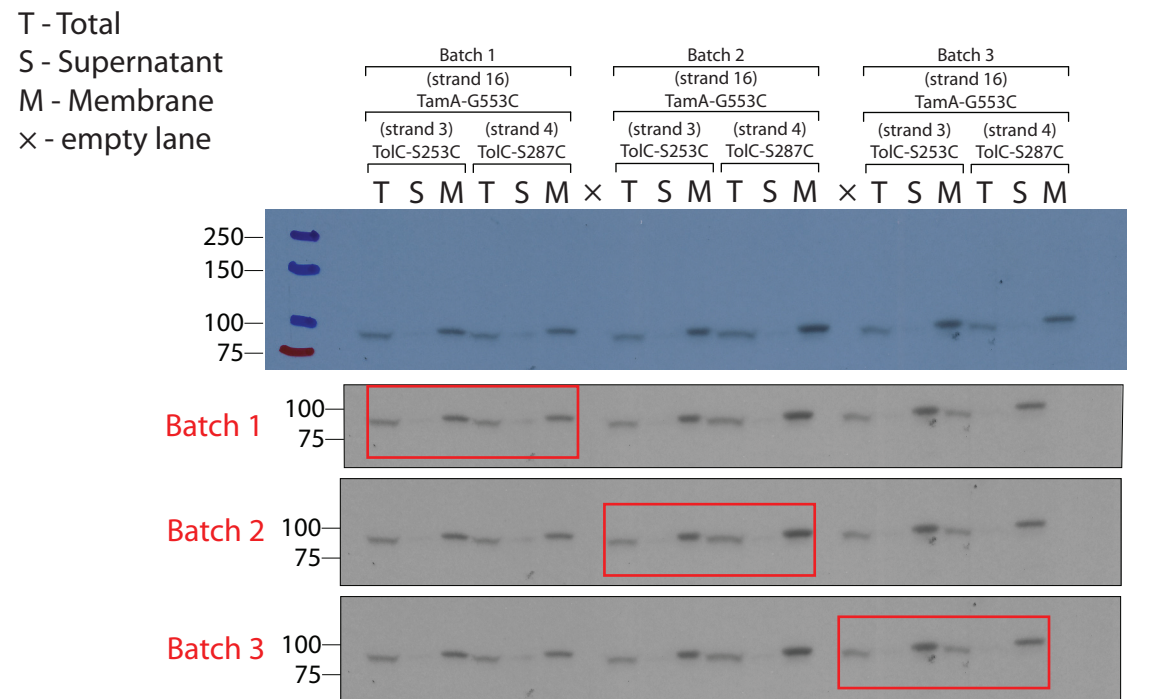
Immunoblot #21 - (S3 Fig; batch 1; αBamA; left panel)



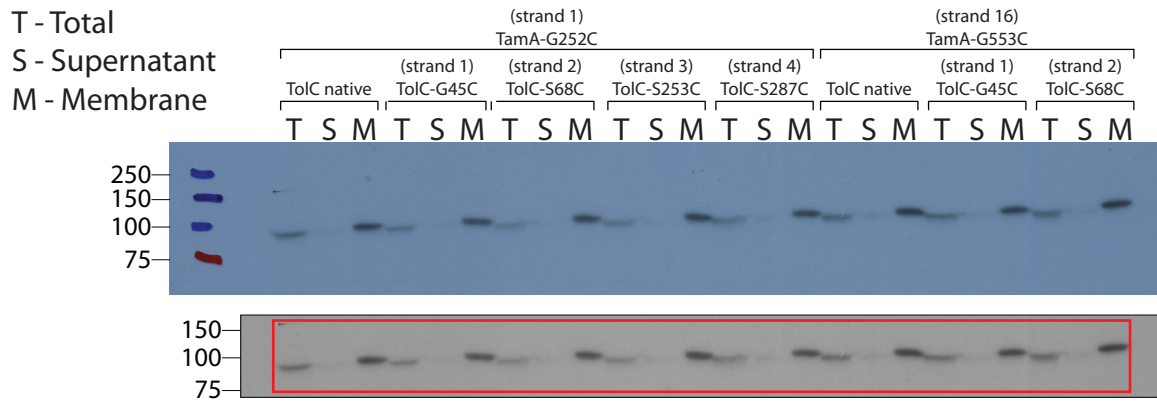
Immunoblot #22 - (S3 Fig; batch 1; αBamA; middle panel)



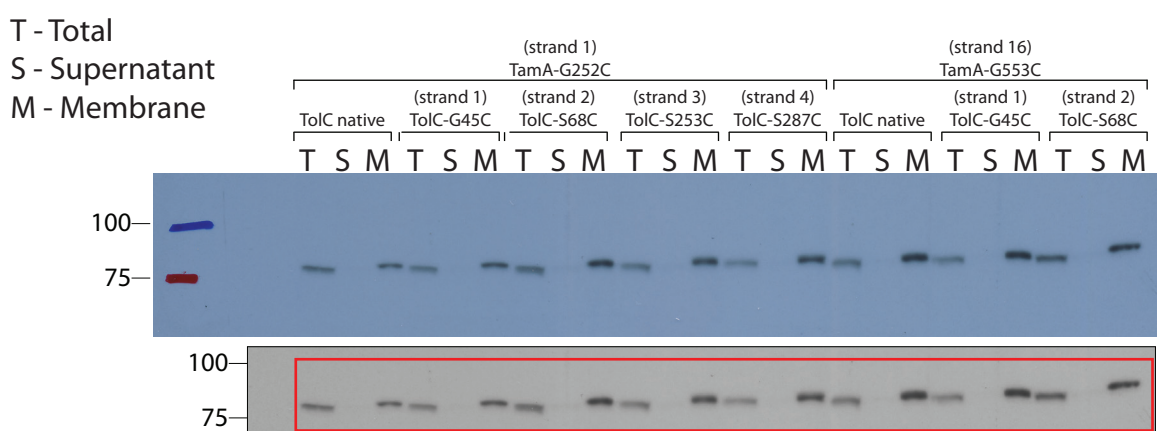
Immunoblot #23 - (S3 Fig; batches 1-3; αBamA; right panel)



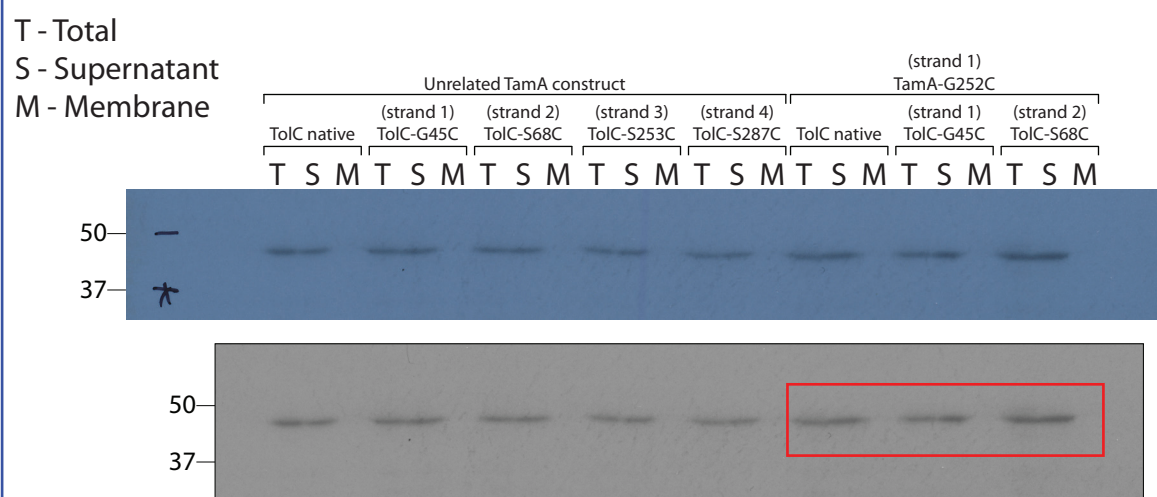
Immunoblot #24 - (S3 Fig; batch 2; αBamA; left panel)



Immunoblot #25 - (S3 Fig; batch 3; αBamA; left panel)



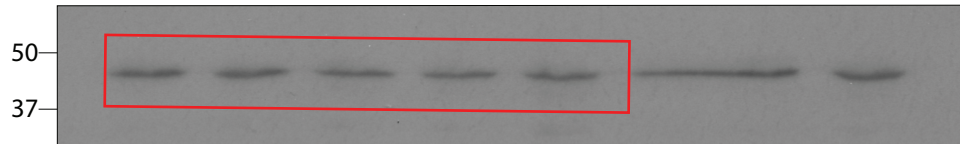
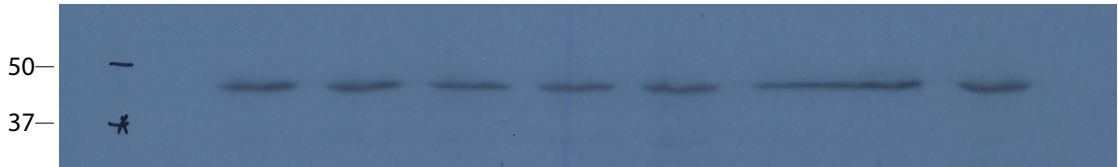
Immunoblot #26 - (S3 Fig; batch 1; αSurA; left panel)



Immunoblot #27 - (S3 Fig; batch 1; αSurA; left panel)

T - Total
 S - Supernatant
 M - Membrane

| | | | | | | | | | | | | | | | | | | | |
|--------------------------|---|--------------------------|---|-------------|---|---------------------------|---|-------------------------|---|--------------------------|---|--------------------------|---|---|---|---|---|---|---|
| (strand 1) TamA-G252C | | | | | | (strand 16) TamA-G553C | | | | | | | | | | | | | |
| (strand 3) TolC-S253C | | (strand 4) TolC-S287C | | TolC native | | (strand 1) TolC-G45C | | (strand 2) TolC-S68C | | (strand 3) TolC-S253C | | (strand 4) TolC-S287C | | | | | | | |
| T | S | M | T | S | M | T | S | M | T | S | M | T | T | T | S | M | T | S | M |

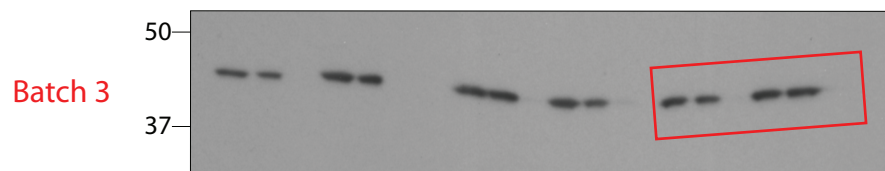
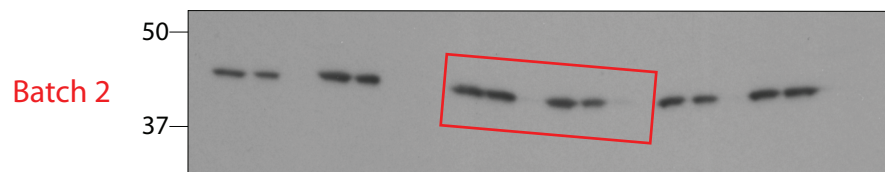
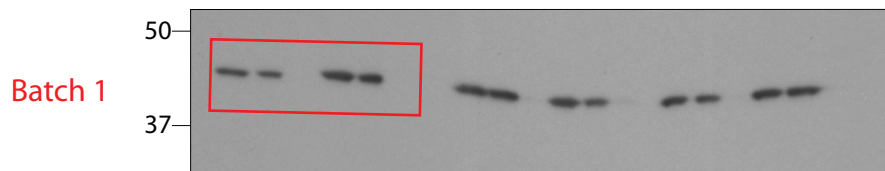


NB: Quadruplicate T - there were potential issues with the lanes/wells hence multiple loading

Immunoblot #28 - (S3 Fig; batches 1-3; αSurA; right panel)

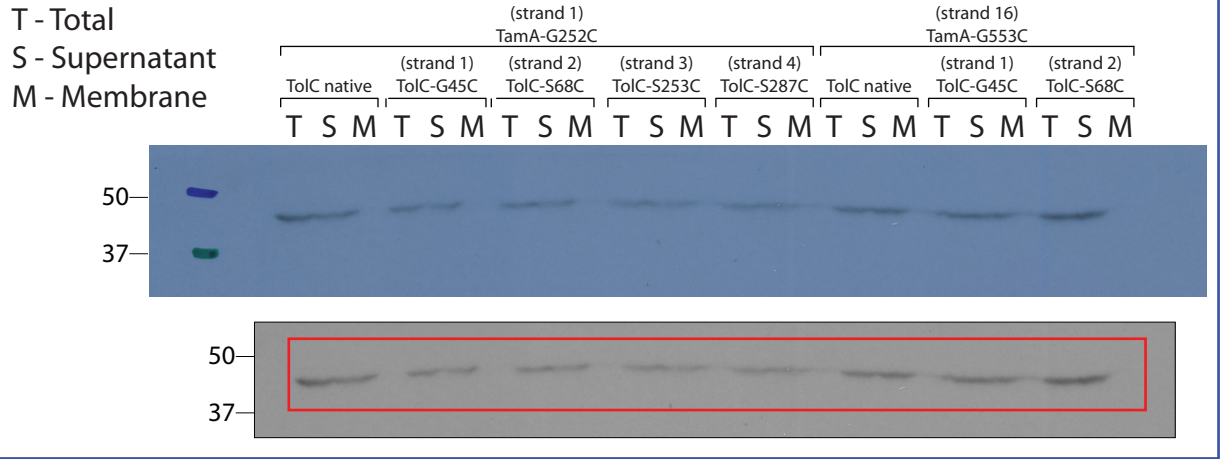
T - Total
 S - Supernatant
 M - Membrane
 × - empty lane

| | | | | | | | | | | | | | | | | | | | |
|--------------------------------------|---|--------------------------|---|---|---|--------------------------------------|---|--------------------------|---|---|---|--------------------------------------|---|--------------------------|---|---|---|---|---|
| Batch 1 (strand 16) TamA-G553C | | | | | | Batch 2 (strand 16) TamA-G553C | | | | | | Batch 3 (strand 16) TamA-G553C | | | | | | | |
| (strand 3) TolC-S253C | | (strand 4) TolC-S287C | | | | (strand 3) TolC-S253C | | (strand 4) TolC-S287C | | | | (strand 3) TolC-S253C | | (strand 4) TolC-S287C | | | | | |
| T | S | M | T | S | M | × | T | S | M | T | S | M | × | T | S | M | T | S | M |

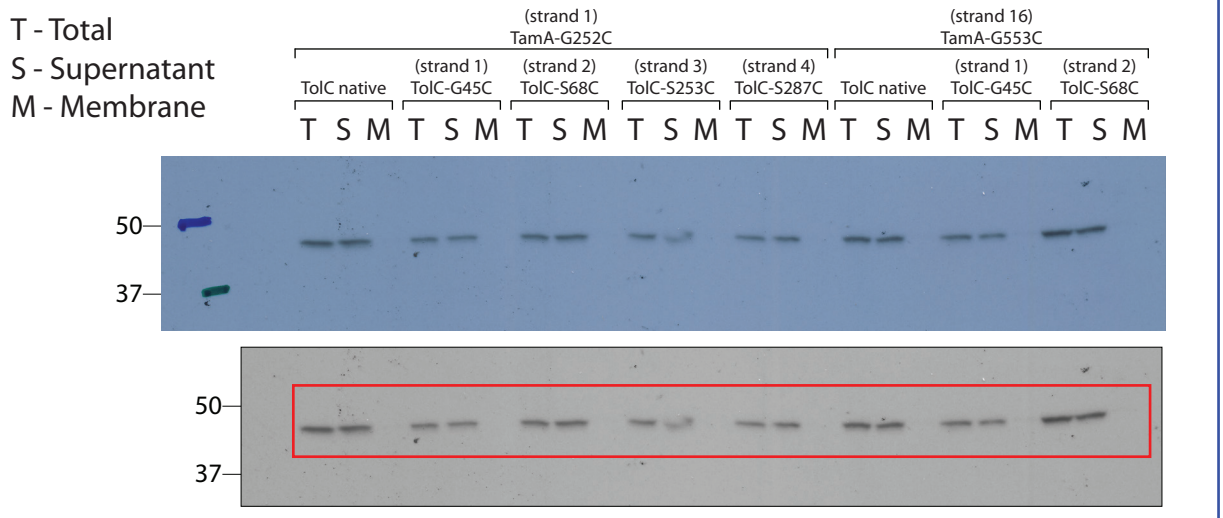


NB: Ran lanes close to the end of the gel where it started to bend

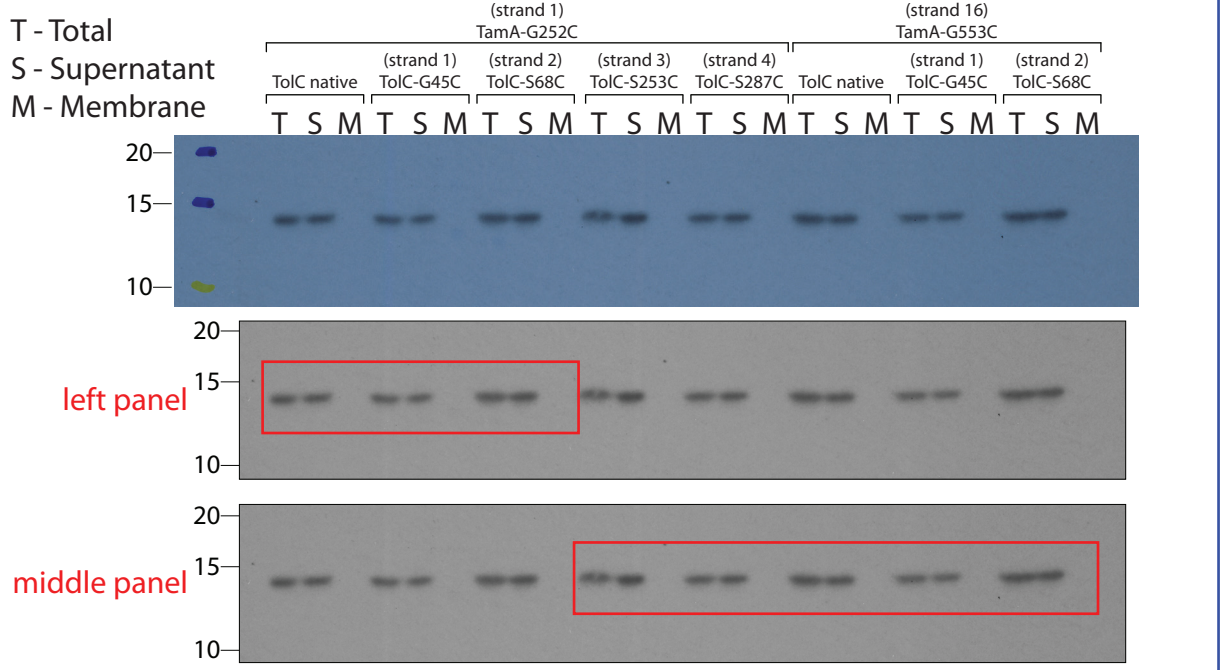
Immunoblot #29 - (S3 Fig; batch 2; αSurA; left panel)



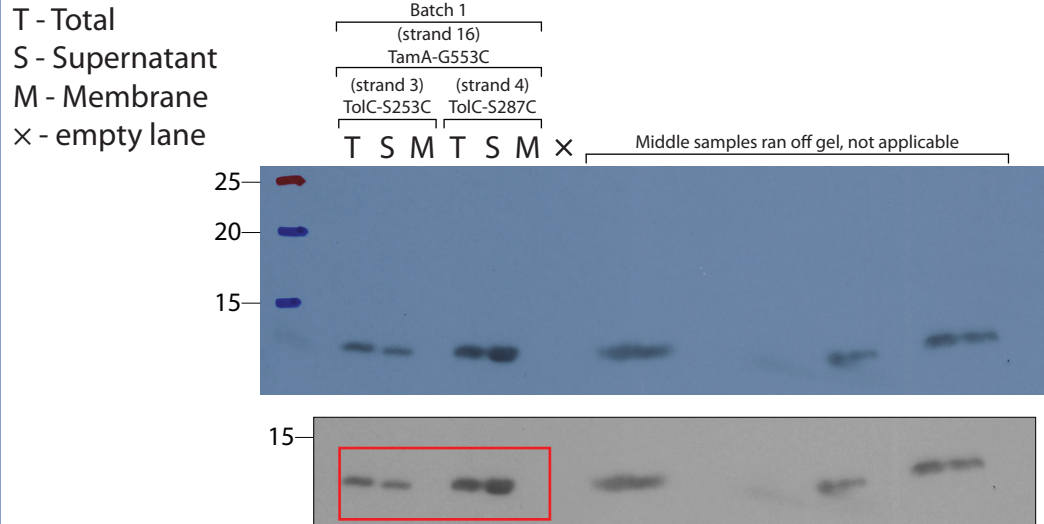
Immunoblot #30 - (S3 Fig; batch 3; αSurA; left panel)



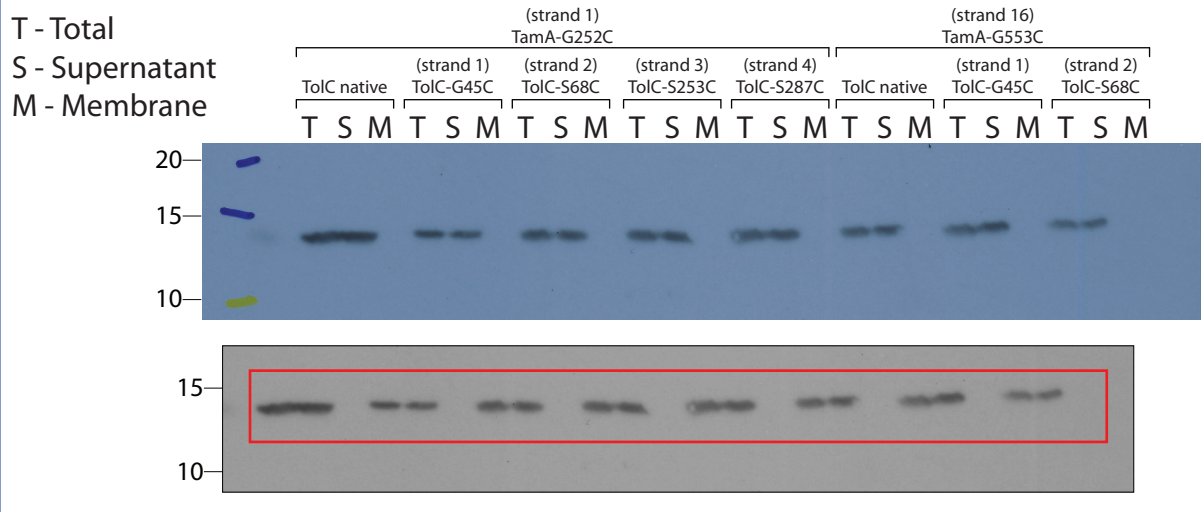
Immunoblot #31 - (S3 Fig; batch 1; αGroES; left and middle panels)



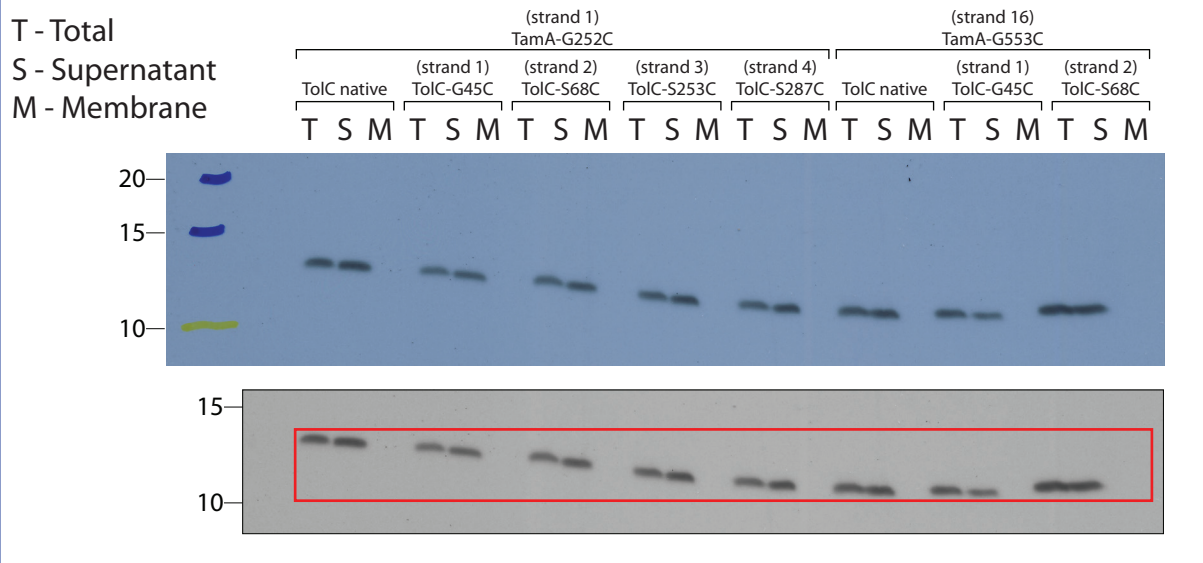
Immunoblot #32 - (S3 Fig; batch 1; αGroES; right panel)



Immunoblot #33 - (S3 Fig; batch 2; αGroES; left panel)

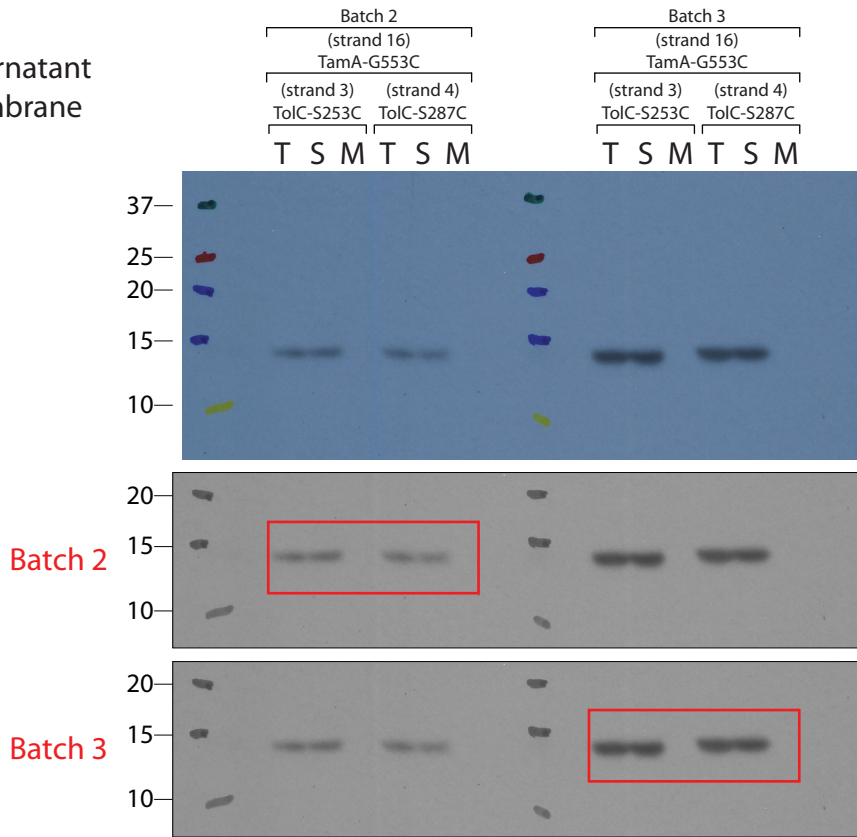


Immunoblot #34 - (S3 Fig; batch 3; αGroES; left panel)

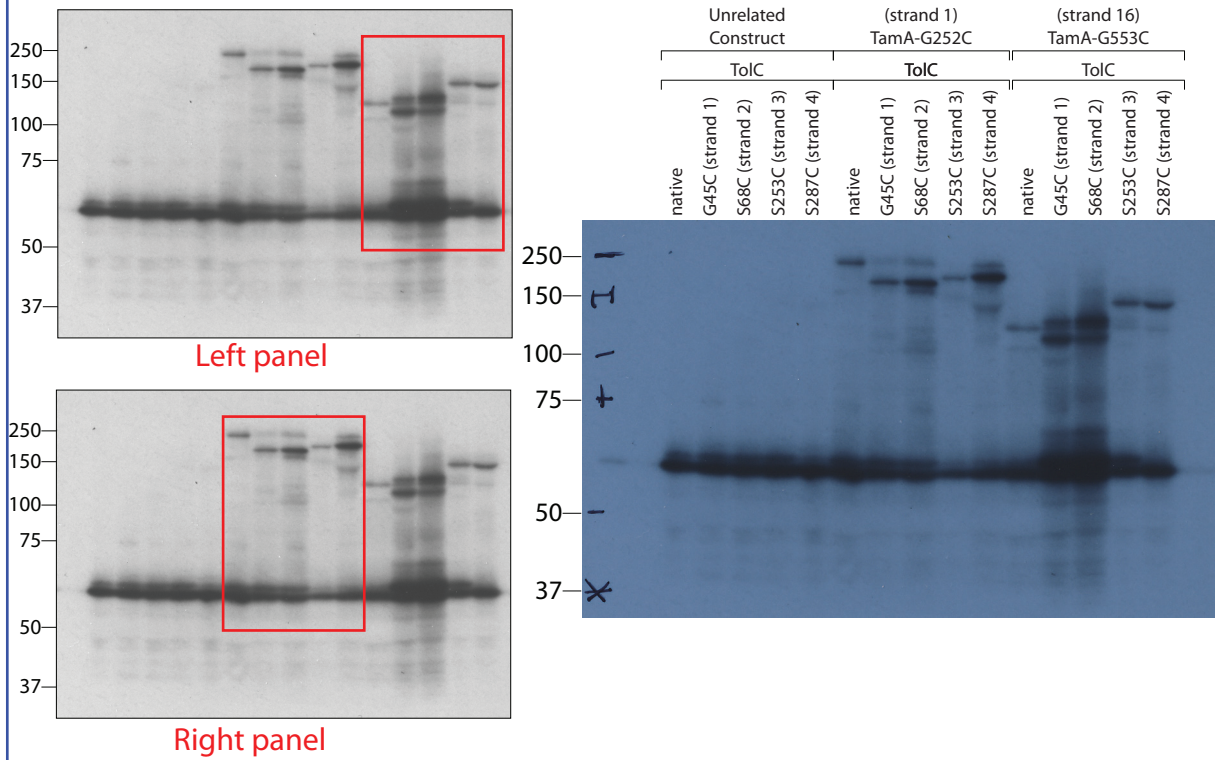


Immunoblot #35 - (S3 Fig; batches 2-3; αGroES; right panels)

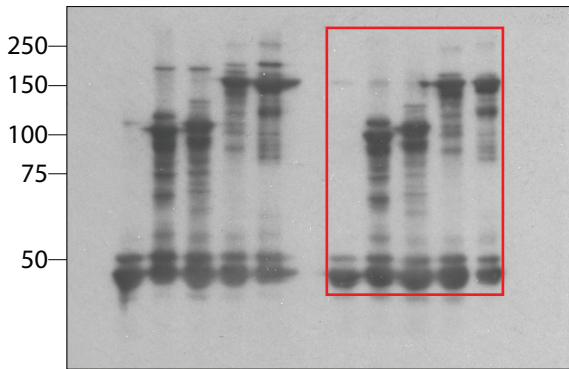
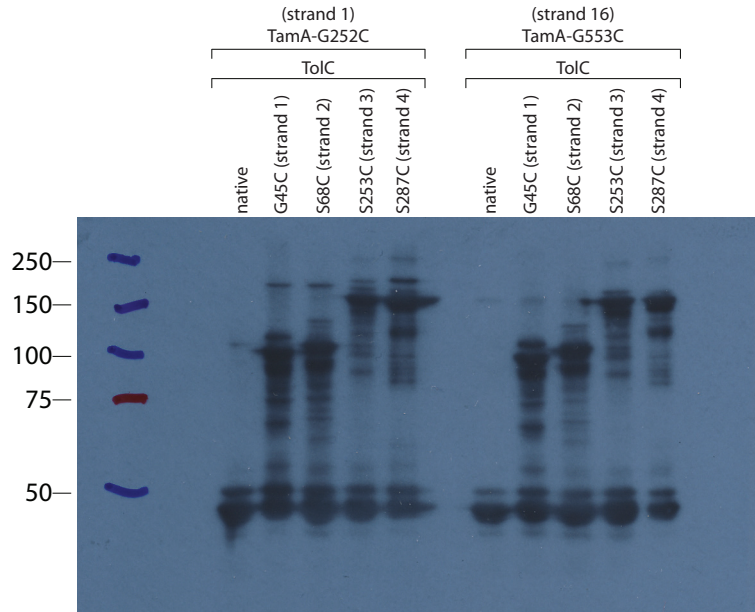
T - Total
S - Supernatant
M - Membrane



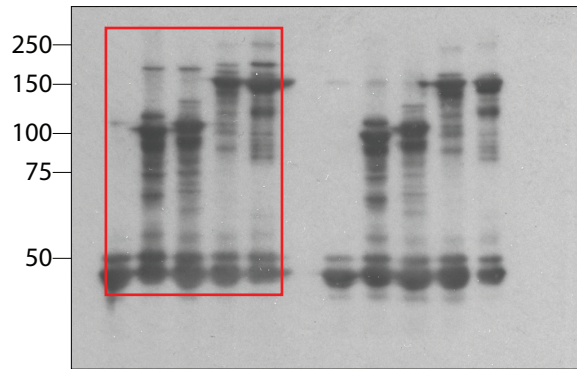
Immunoblot #36 - (S4 Fig; αTamA; left and right panels)



Immunoblot #37 - (S4 Fig; αTolC; left and right panels)

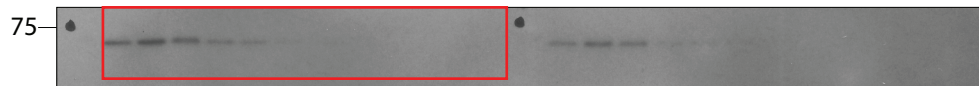
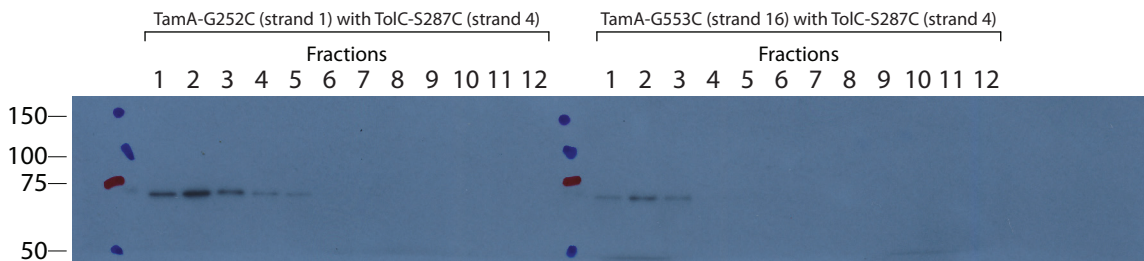


Left panel

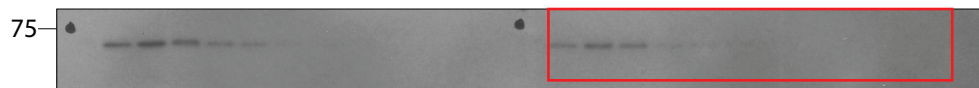


Right panel

Immunoblot #38 - (S5B Fig; batch 1; αPpiD; left and right panels)

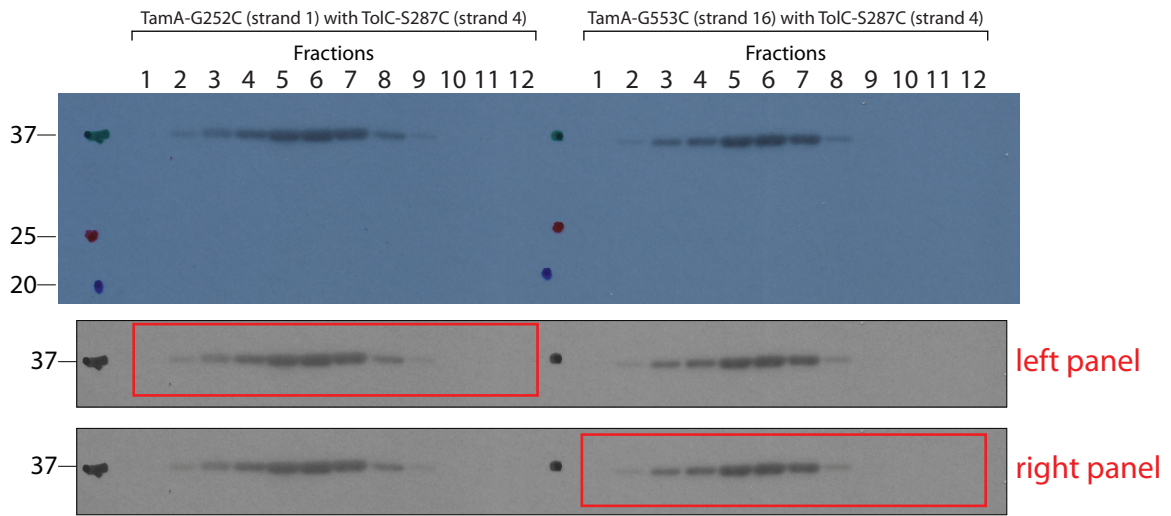


left panel

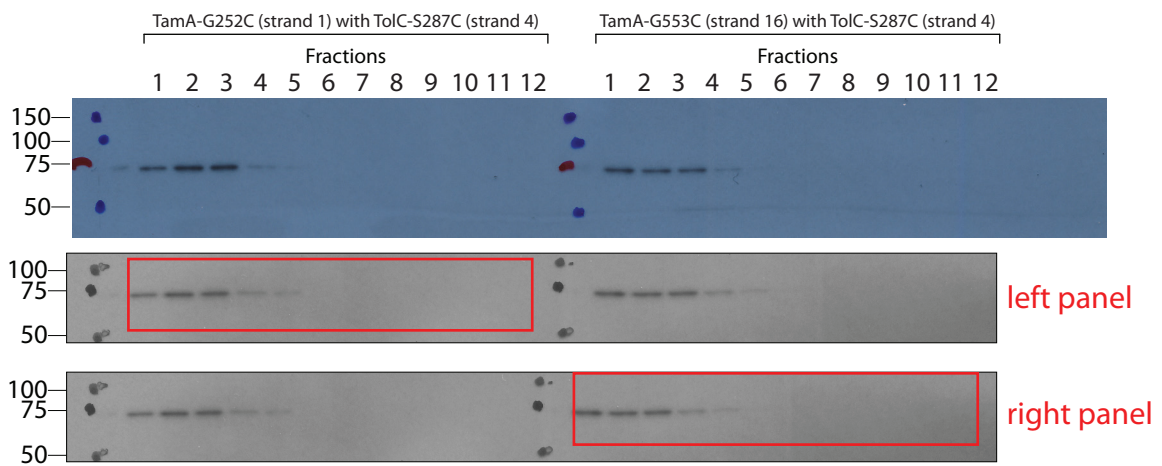


right panel

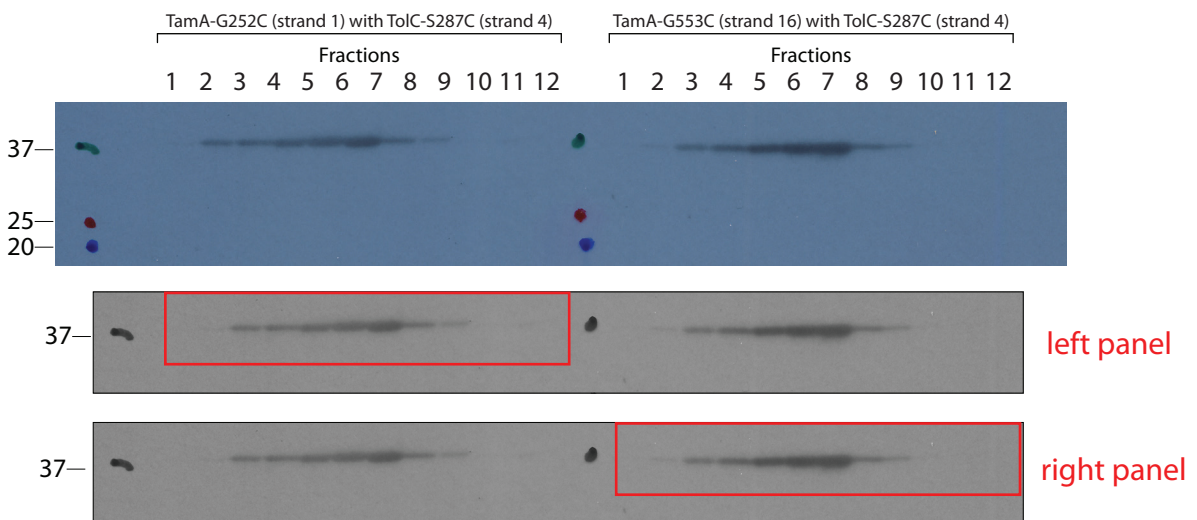
Immunoblot #39 - (S5B Fig; batch 1; α OmpF; left and right panels)



Immunoblot #40 - (S5B Fig; batch 2; α PpiD; left and right panels)



Immunoblot #41 - (S5B Fig; batch 2; α OmpF; left and right panels)



Immunoblot #42 - (S5C Fig; batches 1-2; αTamA)

